

The Alternative Visitor's Guide

FREE

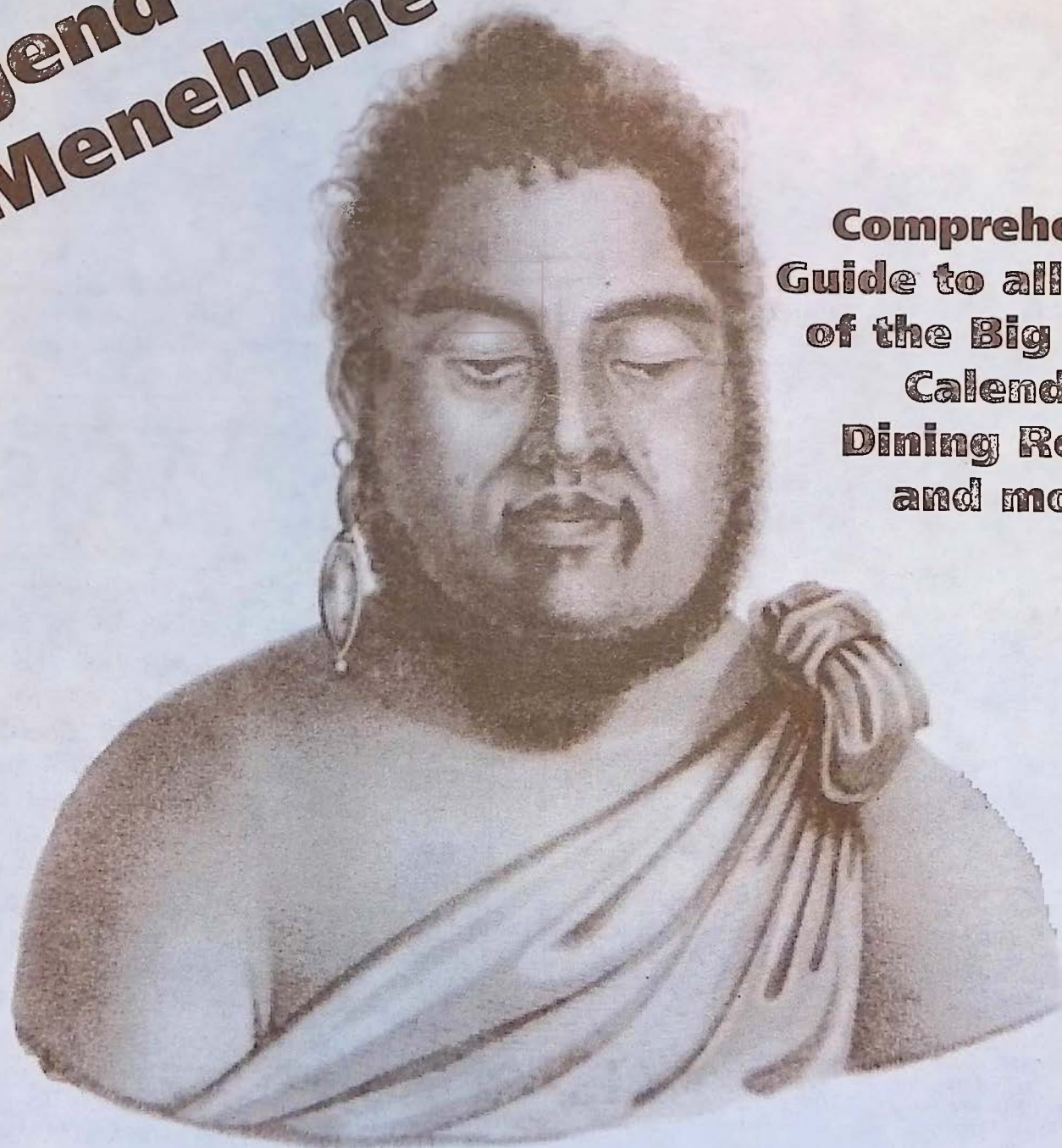


Coffee Times

August 1994 / Big Island of Hawaii / Volume 2 Edition 5

inside this month:

**Legend of the
Menehune**



**Comprehensive
Guide to all regions
of the Big Island,
Calendar,
Dining Review
and more!**

Hawaii Island Bed & Breakfasts

ART GALLERIES

Ackerman Galleries	889-5971	P. 9
Cook's Discoveries	885-3633	P. 12
Cottage Gallery	328-9392	P. 22
Upcountry Connection	885-0623	P. 12
Volcano Art Center	967-8222	P. 16
Wo On Gallery	889-5002	P. 8
Woodcarver's Corner	985-8518	P. 17

COFFEE FARMS

Old Hawaiian Coffee	328-2277	P. 23
---------------------	----------	-------

COFFEE RETAILERS AND CAFES

Bad Ass Coffee Co.	1-800-338-7139	322-2646	P. 21
Holuakoa Cafe		322-CAFE	P. 25
Kohala Coffee Mill		889-5577	P. 9
Waimea Coffee & Co.		885-4472	P. 13

DINING

Aloha Cafe (International, Mexican...)		322-3383	P. 20
Andrew Oliver's		935-6554	P. 36
Bamboo (Pacific Rim, Thai.)		889-5555	P. 8
Cafe Pesto (Pacific Rim Italian)	Kaiwihae 882-1071	Hilo 969-6640	P. 7, 29
Don's Deli (International)		889-5822	P. 9
Edwards at the Terrace (Mediterranean Classics)		322-1434	P. 26
Jolene's Kau Kau Korner (Cafe)		775-9498	P. 30
Jill's Country Kitchen (Deli, Bakery)		329-6010	P. 11
La Bourgogne (French)		329-6711	P. 36
Luquin's Mexican Restaurant (Mexican)		965-9990	P. 14
Mamane St. Bakery		775-9478	P. 30
Mateo's Pizza		775-0944	P. 30
Nuang Mai (Thai Kitchen)		965-8186	P. 14
Sibu Cafe (Indonesian & Southeast Asian)		329-1112	P. 27
The Godmother (Italian)		965-0055	P. 14
Wakefield Gardens (Home Cooked)		328-9930	P. 23

LODGING

Adrienne's B&B and Casa Del Sol		326-2272	P. 26
Bamboo House		965-9340	P. 14
Becky's B&B		929-9690	P. 5
Carson's Volcano Cottages		967-7683	P. 16
Chalet Kilauca		967-7786	P. 17
Haili House Inn		969-7378	P. 36
Hale Kai B&B		935-6330	P. 29
Hale Maluhia B&B	1-800-559-6627	329-1123	P. 25
Hale Ohia Cottages		967-7986	P. 16
Holualoa Inn		324-1121	P. 27
Ho'onanea		328-9445	P. 22
My Island B&B		967-7216	P. 36
Ohia Gardens	1-800-985-7051		P. 17
Papaya's Plantation		965-7119	P. 14
The Village Inn		965-6444	P. 14
Waipio Valley Art Works Vacation Rentals		775-0958	P. 31
Waipio Wayside	1-800-833-8849	775-0275	P. 36
Wild Ginger Inn		935-5556	P. 29

MUSEUMS

Kona Historical Society		323-3222	P. 35
-------------------------	--	----------	-------

AIR, LAND AND OCEAN ADVENTURES

Atlantis Submarines (Submarine Adventure)		329-6626	P. 3
Body Glove Snorkeling Cruise (Snorkeling Cruise)		326-7122	P. 3
Chris' Bike Adventures (Bike Tours)		326-4600	P. 8
Dan McSweeney Whale Watch		322-0028	P. 35
Impulse Charters (Sport Fishing)		325-7749	P. 26
Kona Kai-Yak (Tours, Rentals, Sales)		326-2922	P. 27
Nautilus Submarine Experience (Underwater Reef Tours)		326-2003	P. 3
West Wind Sailing Charters		325-6471	P. 3

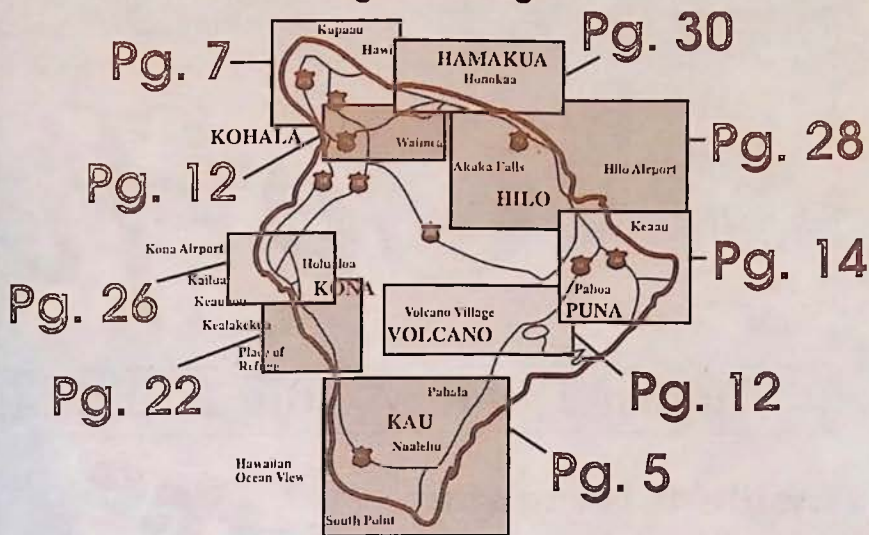
SPECIALTY SHOPS

Antiques	Honokaa Trading Co.	775-0808	P. 30
Clothing	As Hawi Turns	889-5023	P. 7
	Hawaiian Hemp Co.	965-8600	P. 14
	Princess Kaiulani	885-2177	P. 13
Dance Studios	Dameron's Academy of Dance	322-8119	P. 20
General Stores	Aloha Village Store	322-9941	P. 20
	Kohala Health Food	889-0277	P. 8
	Naalehu Fruit Stand	929-9009	P. 5
	Pahoa Natural Groceries	965-8322	P. 14
Hardware	Pahoa Hardware	965-6459	P. 14
Ice Cream	Simply Natural	775-0119	P. 30
	Tropical Dreams	889-0505	P. 9
Gardens	Akatsuka Orchid Garden	967-8234	P. 15
Mac Nut Factory	Hawai Mac Nut Plantation	775-7201	P. 31
Photo Developing	One Hour Moto Photo	329-2080	P. 27
Publications	Ka'u Landing	929-8130	P. 5
Real Estate	A Real Estate Concern	322-3677	P. 21
	Kohala Pacific Realty	889-5181	P. 9
Spa Service	Querencia Spa	328-2569	P. 22

THEATRES

Aloha Performing Arts Center	(see calendar)	322-9924	P. 20
Kona Market Place Cinemas		329-4488	P. 3
People's Theater		775-0000	P. 30

Regional Pages



COFFEE TIMES

For calendar inserts, historical comments or TO RESERVE AD SPACE

Call or write the publisher, Les Drent, at: (808) 326-7637

P.O. BOX 1092 Captain Cook, Hawaii 96704

Contributing Staff:

Guest Feature Writers:

Steve Graves

Larry Douglas

Hal Hisa Yamoto

Photography:

Michael Stewart

Production:

Gary De Pontes

Rosie De Pontes

For Mainland Subscriptions:

Send \$50 for a lifetime subscription. Add \$10 if outside of USA. Mail to: Up Country Productions

P.O. Box 1092 Captain Cook, HI 96704

Read This ↓

UP COUNTRY is not the manufacturer, or an agent of the manufacturer, for the goods and services being advertised herein and therefore makes NO EXPRESS OR IMPLIED WARRANTY OF ANY KIND WITH RESPECT TO THOSE GOODS AND SERVICES. The publisher will not be responsible for typographical or printing errors, but will reprint without charge that portion of the ad in which the error occurs. Publisher accepts no responsibility for errors resulting from telephone insertions.

Illustrations used herein are for design purposes only and do not necessarily depict the actual items offered by the advertisers.

This publication may not be reproduced in whole or in part without the prior written consent of UP COUNTRY and reserves the right to edit, revise or refuse any advertisement.

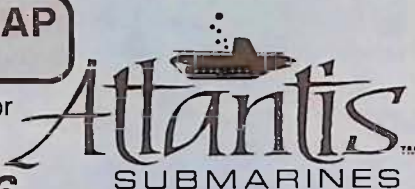
HAWAII'S ONLY Submarine Adventure

Come descend into the ocean world with us as we explore 25 acres of Kona's natural coral reef and hundreds of tropical fish. Life under the Hawaiian ocean will fascinate you! Hourly dives daily Departing from King Kamehameha's Kona Beach Hotel on Alii Drive in Kailua-Kona.

FREE ATLANTIS CAP
see our coupon

For reservations please call or
see nearest activity desk.

(808) 329-6626



West Wind Sailing Charters

**Private 41' Ketch
Wet & Fun!**

**1/2 day, full day,
overnight charters**



(808) 325-6471

NAUTILUS II SEMI SUBMERSIBLE HAWAII'S SUBMARINE EXPERIENCE



Enjoy Both Topside and Underwater Viewing in our Air-Conditioned, 58-Foot, 34-Passenger Coast Guard Approved Vessel. No Age Limit, Day and Night Cruises, Special Group Charters Available

INTRODUCTORY PRICES

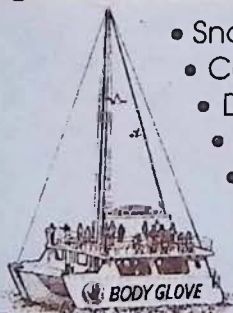
ADULTS	\$34.95
CHILDREN	\$19.95

For reservations call or stop in at our shop. We are located
across from the pier in Kailua-Kona

326-2003

BODY GLOVE KONA'S PREMIUM SNORKEL CRUISE SNORKEL • SCUBA • SNUBA

- Snorkel Gear & Instruction
- Continental Breakfast
- Deli Buffet Lunch
- Flotation Water Toys
- Full Service Bar (no host)
- Water Slide



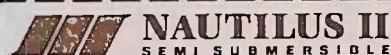
326-7122

Coffee Times

HAWAII

WELCOME TO THE BIG ISLAND

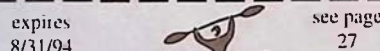
READ IT, DRINK IT, LIVE IT!



\$5 Off

Underwater Ride with this coupon

see page 3 **326-2003** expires 8/31/94



\$5.00 OFF

KAIYAK RENTAL OR TOUR
326-2922



for a welcome break in your day

1.00 OFF one pound of coffee or a
FREE cup of our coffee of the day
with this coupon. (with purchase)

885-4472 or 1-800-854-5662

Holuakoa Cafe

*Free cup of 100% Kona
Coffee with this coupon*

see page 25 **322-CAFE** expires 8/31/94

located in Holualoa Town



FREE ICE CREAM CONE
with purchase of deli
sandwich and this coupon

DON'S Family DELI

Kapaau Town by the King's statue

10% OFF

ALL LUNCH ORDERS
over \$10 with this coupon

expires 8/31/94 **889-5822** see page 9

see page 21



expires 8/31/94

Buy 5 Pounds of Kona
Coffee Get 1 **FREE**

at our Kainaliu Roasting Room with
this coupon (except prime grades)

see page 3

BODY GLOVE

\$10 OFF ADULT COUPLE FARE



with this
coupon

expires 8/31/94

326-7122



See Page 23



expires 8/31/94

2 for 1 Papaya Boat Special
filled with tuna salad & herb dressing
buy one get one free with this coupon

328-9930

ONE HOUR MOTOPHOTO

expires 8/31/94

FREE SET OF PRINTS

Receive a second set of prints for
FREE with every roll of film
processed with this coupon

329-2080

see page 5

expires 8/31/94



see page 3

FREE ATLANTIS CAP

With purchase of dive, one cap per
coupon. Departs hourly from King
Kamehameha's Kona Beach Hotel on
Alii Drive in Kailua-Kona. **329-6626**



**SNORKELING
EQUIPMENT
RENTAL**

\$14

With this coupon only. Located at Sunset
Plaza on Alii Drive in Kailua-Kona.

329-3772

expires 8/31/94

"TCBY"

The Country's Best Yogurt

Waimea Center 885-2166
Kona Coast Shopping
Center 329-0151

FREE PINT

(over 31 flavors to choose from)

when you purchase a quart

expires 8/31/94

Coffee Times

HAWAII

WELCOME TO THE BIG ISLAND

READ IT, DRINK IT, LIVE IT!

Coffee Times

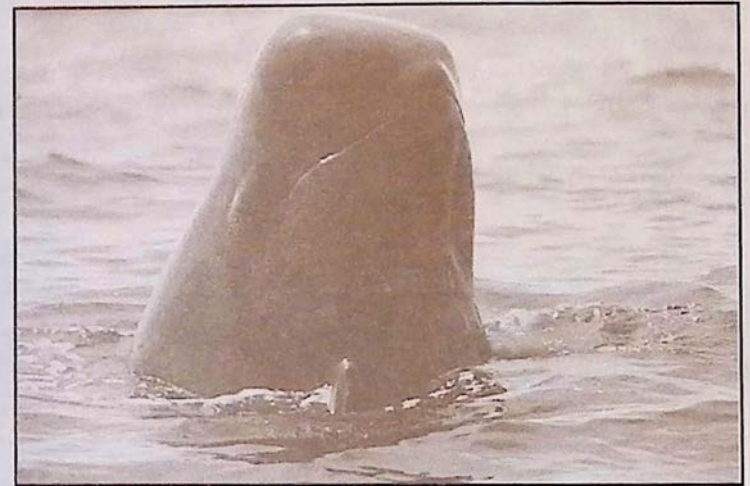
The Pilot Whale

One of Hawaii's most popular
Summertime whales

by Dan McSweeney

Little do most people know that after Kona's most popular winter time visitor, the humpback whale, heads north into the Pacific there are still many species of whale that remain in the Hawaiian waters. These other type of whales, known as toothed whales, include the giant sperm whale, pilot whale, exotic false killer whale, pygmy killer whale, the unusually-shaped melon-headed whale and the rare beaked whale. Add to these six types of whales four species of playful dolphins: bottle-nosed, rough toothed, spotted and spinner, and you can see there are all kinds of whales to appreciate here in Kona waters.

The most common of these year-round species is the pilot whale which is



A curious male pilot whale "spy hops" off the Kona Coast
Photo by Dan McSweeney

black with a round, bulbous head can reach lengths of almost 18 feet and weigh 2 to 3,000 pounds. Pilot whales are most commonly found in groups or pods of about 20 to 40 individuals usually along the deep water ledges off our Kona Coast freely swimming amongst both charter and recreational fishing boats.

Larger aggregations of 80 to 150 pilot whales have been seen offshore especially during the spring and summer months. These large "gatherings" maybe times when these highly social animals come together for socializing, play and mating.

Pilot whales are one of the most fascinating of animal species and it always astounds me how little we know about them. Fortunately, since so many live right here in our coastal waters throughout the year, I've been able to study them and contribute to our growing knowledge of them.

As I've done for nearly two decades with the humpback whales, I'm taking inventory of pilot whale numbers, size of their groups, movements along our coastline and their behaviors.

By photographing and comparing their distinct dorsal fin shapes I have been able to individually identify hundreds of these pilot whales in our Kona waters. Many of these distinct individuals have been seen so many times over the past ten years that they have become as familiar as old friends. This indicates that some individuals are here year round.

This non offensive long term research can lead to social habits. This will include female calving rates, how many calves are surviving and how long they stay with their mothers. Some information already suggests that female pilot whales can live into their sixties while males can live to be 40 to 45 years old. Calves nurse from their mothers for at least 2 years while some continue to suckle into their teenage years!

To learn more about Hawaii's pilot whales or other species of summertime whales spend the morning with us on one of our whale watching tours. Refer to our ad on page 35 for more information.

see page
21



expires
8/31/94

Buy 5 Pounds of Kona
Coffee Get 1 **FREE**
at our Kainaliu Roasting Room with
this coupon (except prime grades)

see page
3

BODY GLOVE

\$10 OFF ADULT COUPLE FARE



with this
coupon

expires
8/31/94 **326-7122**



See Page
23



expires
8/31/94

2 for 1 Papaya Boat Special
filled with tuna salad & herb dressing
buy one get one free with this coupon
328-9930

ONE HOUR
MOTO PHOTO expires
8/31/94

FREE SET OF PRINTS

Receive a second set of prints for
FREE with every roll of film
processed with this coupon
329-2080 see page
27

expires
8/31/94



see page
3

FREE ATLANTIS CAP

With purchase of dive, one cap per
coupon. Departs hourly from King
Kamehameha's Kona Beach Hotel on
Alii Drive in Kailua-Kona. **329-6626**



**SNORKELING
EQUIPMENT
RENTAL
\$14**

With this coupon only. Located at Sunset
Plaza on Alii Drive in Kailua-Kona.

329-3772 expires
8/31/94



\$5 Off

Underwater Ride with this coupon

see page
3 **326-2003** expires
8/31/94

expires
8/31/94



see page
27

\$5.00 OFF

**KAIYAK RENTAL OR TOUR
326-2922**

see page
13



expires
8/31/94

for a welcome break in your day
1.00 OFF one pound of coffee or a
FREE cup of our coffee of the day
with this coupon. (with purchase)
885-4472 or 1-800-854-5662

Holuakoa Cafe

Free cup of 100% Kona
Coffee with this coupon

see page
25 **322-CAFE** expires
8/31/94

located in Holualoa Town

see page
30



expires
8/31/94

FREE ICE CREAM CONE
with purchase of deli
sandwich and this coupon

DON'S Family DELI
Kapaau Town by the King's statue
10% OFF
ALL LUNCH ORDERS
over \$10 with this coupon
expires
8/31/94 **889-5822** see page
9

"TCBY"

The Country's Best Yogurt

Waimea Center 885-2166
Kona Coast Shopping
Center 329-0151

FREE PINT

(over 31 flavors to choose from)

when you purchase a quart

expires
8/31/94

South Point: Land of Discovery

Ka'u Region

The actual place where Polynesians landed will always remain a mystery, but it was likely somewhere near the southern tip of the Big Island. This area seems a probable place because their approach would be from the South where all of Polynesia lay. When sailing North, the Big Island would be the first island they would see, and South Point would be the nearest landfall. Aside from the logic of such a choice, there is archaeological evidence supporting the supposition of a landing near Ka Lae, as the Hawaiians call the most southern tip of the island of Hawaii.

Excavation of lava tubes, that were used as shelters, near Kailikii and Waiahukuni, villages four miles Northwest of the Ka Lae, indicate people were using them by A.D.750. There is other evidence that indicates people first were in the area as early as A.D. 200.

The cliff near South Point Park is a common mooring place for the modern day fishermen who find these waters a rich resource. From the precipice the drop is about forty feet to the ocean's surface, but the cliff base goes down another thirty feet below the surface of the water. Ladders, hung to make access to the boats easier, swing freely in the air just above the sea. The cliff is deeply undercut.

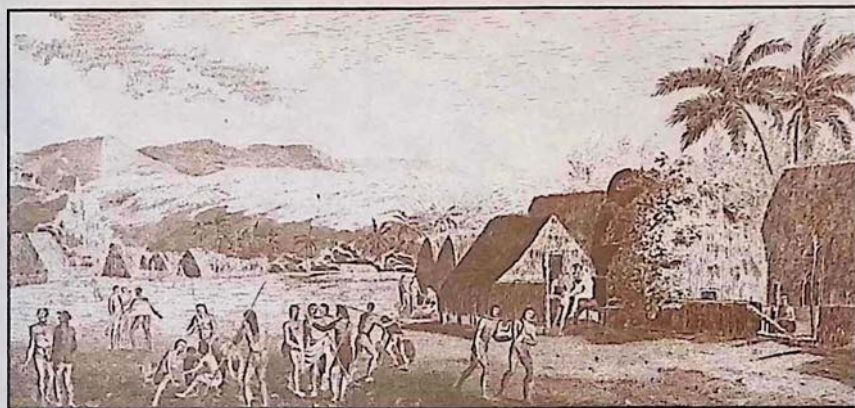
In the heat of the day the water looks inviting. It is so clear the bottom can be seen plainly. For some there might be a temptation to leap into the cool water, and climb back up the ladder. It looks inviting, but don't do it. A swift current runs along the shore. The flow will carry anyone in the water straight out to sea. It is called the Halaea Current, named for a chief who was carried off to his death.

One of South Point's most famous scenic spots is Mahana Beach, also called Green Sands Beach because it has a distinctive golden green color. Although none of the fragments in the sand are large enough for jewelry purposes, the beach is composed chiefly of peridot, a semiprecious gemstone.

These tiny green gems are a silicate, one of the many families of quartz, which cook out of the basaltic magma over time. (They are apparent as green flecks in the raw lava stones used to build the columns and walls of the Jagger Museum at Kilauea's Volcano National Park.) As lava reached the coast, ero-

sional forces, and the specific gravity of the stones, perhaps are responsible for the accumulation of such a large quantity of the granules that produced the green sand beach.

When looking at the severe landscape of the whole area it is hard to visualize what a delightful land it must have been about fifteen hundred years ago when people first lived there. They came to a lush land, but one with few food plants. Soon, in just a few seasons, the introduced food plants bloomed and produced their fruits. Over the centuries the land became one great garden. Hawaiians were not farmers, instead, they were the world's greatest gardeners. The soil was never tilled by beasts or machines, but always by hand. In the mild climate, there was no need for an extensive annual harvest. Only the food needed for the day was gathered from the garden. Intimate working with the land made Hawaiians expert in how to get the most from a given plot of soil. Today the small villages of Pahala and Naalehu exist



Early copper engraving of a Hawaiian village made from a drawing by John Webber, circa 1776-1780

near the sea in the southern district of Kau. The remote setting of these towns is supported by home cooked goodness and fresh local fruit at the Naalehu Fruit Stand and Becky's Bed and Breakfast, an affordable option for lodging. Its quaint setting is still only thirty minutes to Volcano Village if you are moving around the island. Kau landing, the progressive local newspaper, focuses on the issues that affect the entire community of the Big Island can be found at numerous locations around the island. A subscription to Kau Landing allows visitors the opportunity to stay in touch with Big Island news.

BECKY'S
BED and BREAKFAST
Southern Most Town in USA

Full Breakfast All You Can Eat

Phone or Fax: (808) 929-9690 Off Island: 1-800-235-1233

Rooms Comfortable, affordable, with cable TV, private bath, queen or two double beds. Rates \$38 and up with full breakfast. Children welcome. Close to: Black and Green Sand Beaches. Swim with the Turtles, Golf courses or Volcano Park. Or after a long day on the Island just relax in our Whirlpool Spa and Star gaze. Location is the most southern town in the USA on Hwy. 11.

25% Off
on 4 day stay or longer

From the Southernmost District of Hawai'i Island

KA'U LANDING

(808) 928-6449 P.O. Box 160, Pahala, Hawai'i 96777

In-depth and ongoing coverage of the land, the people and the issues that affect the present and the future of our Big Island Communities.

☐ 1 year (12 issues) \$12
 ☐ Sample Copy \$1.50

Naalehu Fruit Stand

"A stop in good taste"

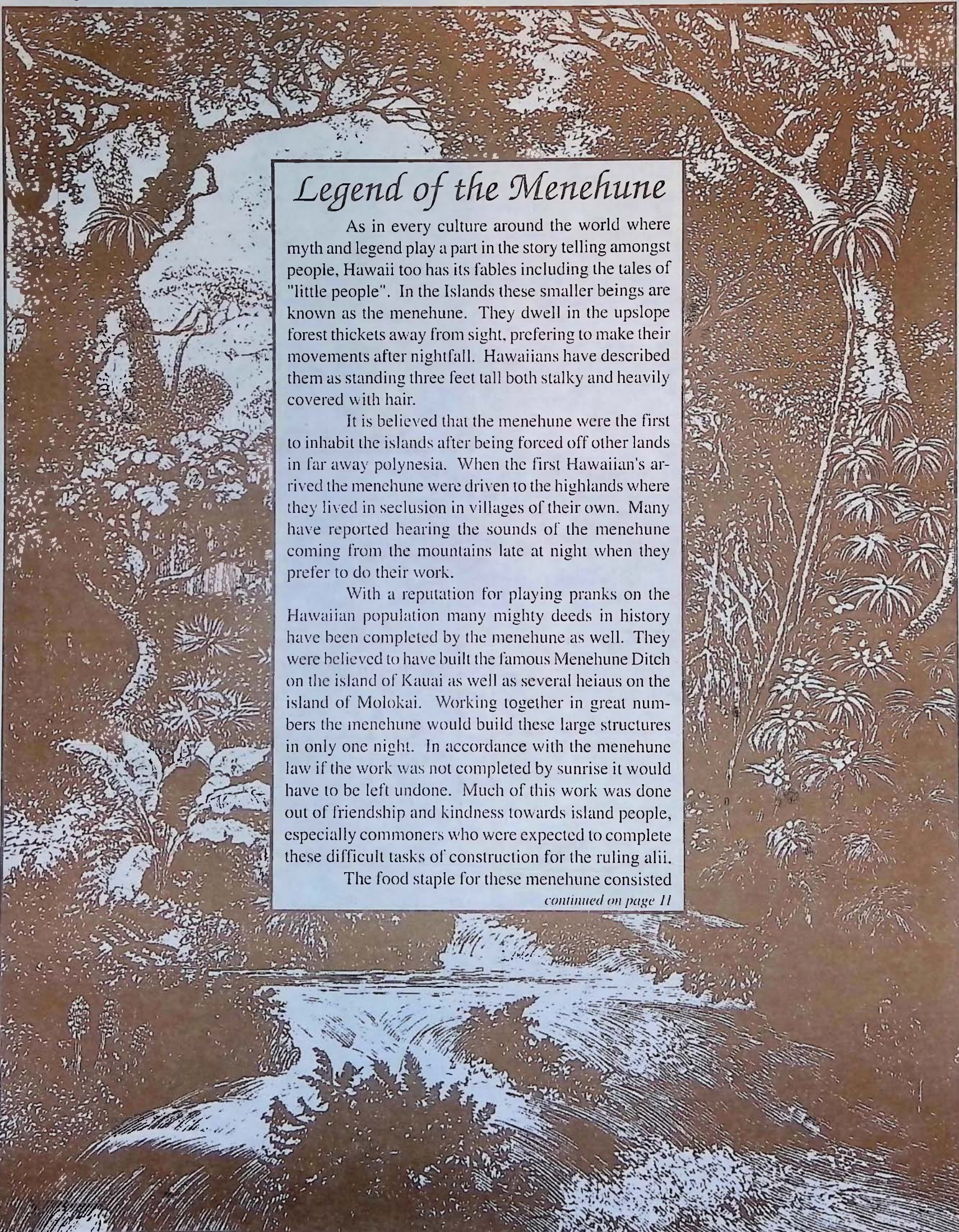
Tropical Fruit Breads ~ Cookies ~ Pies ~ Giant Sub Sandwiches ~ Pizzas
~ Garden Burgers ~ Hot Soups ~ Fresh Salads ~ Fresh Juices

Try Our Macadamia Nut Pie!

Southernmost point in U.S.A.

It's the perfect rest stop on the way to Volcano!
Sundry and Souvenir items available
Free souvenir with purchase
P.O. Box 31 Naalehu, HI 96722 (808) 929-9009

Open Daily at 9 am
on Hwy 11



Legend of the Menehune

As in every culture around the world where myth and legend play a part in the story telling amongst people, Hawaii too has its fables including the tales of "little people". In the Islands these smaller beings are known as the menehune. They dwell in the upslope forest thickets away from sight, preferring to make their movements after nightfall. Hawaiians have described them as standing three feet tall both stalky and heavily covered with hair.

It is believed that the menehune were the first to inhabit the islands after being forced off other lands in far away polynesia. When the first Hawaiian's arrived the menehune were driven to the highlands where they lived in seclusion in villages of their own. Many have reported hearing the sounds of the menehune coming from the mountains late at night when they prefer to do their work.

With a reputation for playing pranks on the Hawaiian population many mighty deeds in history have been completed by the menehune as well. They were believed to have built the famous Menehune Ditch on the island of Kauai as well as several heiaus on the island of Molokai. Working together in great numbers the menehune would build these large structures in only one night. In accordance with the menehune law if the work was not completed by sunrise it would have to be left undone. Much of this work was done out of friendship and kindness towards island people, especially commoners who were expected to complete these difficult tasks of construction for the ruling alii.

The food staple for these menehune consisted

continued on page 11

Friendly North Kohala

Biking Adventures, Art Galleries,
Fine Dining, Cafes, Quaint Shops,
and even a local Ice Cream Factory



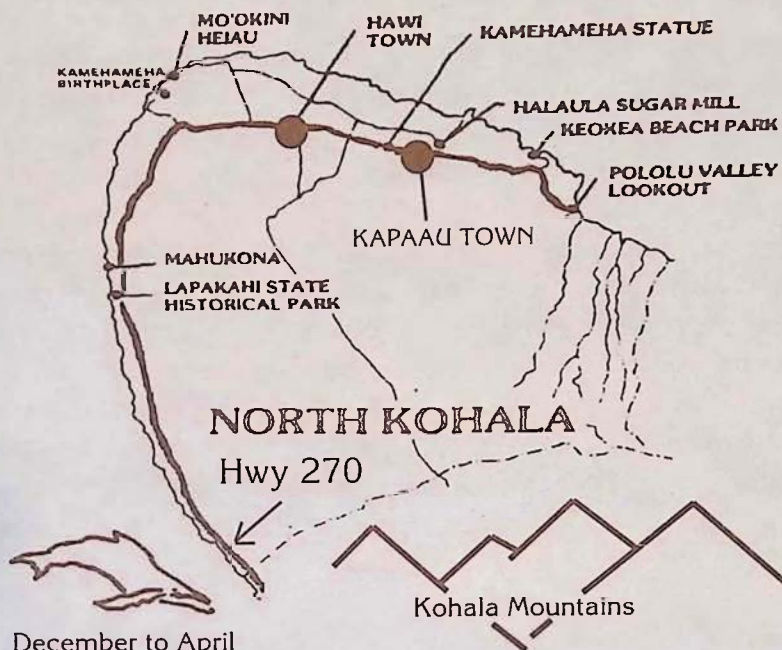
photo by Michael Stewart

Following highway 270 north visitors will encounter a landscape filled with historical landmarks that include the original statue of King Kamehameha, Kalahikiola Church, and Mo'okini Heiau which is regarded as the oldest pre-Western contact temple of worship. In the year 1758 King Kamehameha was believed to be born at Mo'okini.

Also to be found in the North Kohala region are the remnants of a once thriving sugar plantation industry of the 1880's

which is still visible in the many old storefronts of Hawi & Kapaau towns. These towns are now preserved by a new generation of Hawaii business which have their own distinct local offerings. In Hawi Town, a fun romantic & wild boutique called **As Hawi Turns** awaits those visitors seeking new clothing for the Hawaiian life-style and is not for the weak at the knees. The shop also carries handmade crafts by Big Island artists. Across the street is **Kohala Health Food** which carries a hearty selection of herbals, local fruits and various gift items. Massage therapy is also available.

Next to As Hawi Turns is **Kohala Pacific Realty**, where



December to April

visitors are welcome to stop in for free maps of the North Kohala region. On the other side of the street is the newly opened **Bamboo Restaurant**. Inside what was once the grand old Takata Store, built during the booming days of sugar cane, chef Michael Neff combines Pacific Rim dishes with flavors from as far off as Thailand to create his innovative style of cuisine. Farm fresh herbs and a next door bakery contributes a local flare to the food.

Just up the road a piece, smack dab in the middle

continued on page 8

889-5577

WELCOME to the newest addition to
Big Island Coffee Houses

KOHALA COFFEE MILL

Located in the restored 1932 Toyama
Building in downtown Hawi

*Enjoy espresso, cappuccino and a
full line of coffee drinks (all made with 100%
Kona coffee).*

*Relax, share wisdom, 'talk story'
and feel the pace of old Hawaii in a shop
that is decorated with scenes from early Ha-
waii coffee plantation days.*

*Also featured are fine pastries,
fresh donuts, coffee accessories and gifts.*

Open 7 Days A Week

As Hawi Turns

*Clothing for the
Hawaiian Lifestyle,
Local Crafts*

Located in downtown Hawi
across from Kohala Health
Food and Pumehana Flowers

889-5023



whether you choose...

HAND-TOSSED PIZZAS, FINE PASTAS
OR
SCRUMPTIOUS DESSERTS
you will always get...

AN ADVENTURE IN TASTE

CAFE

Pesto

KOHALA COAST

OPEN FOR LUNCH & DINNER
Kawathae Center, On the Kohala Coast, 882-1071

continued from page 7

of Kapaau Town is Hawaii's own local ice cream factory, **Tropical Dreams**. The owners, Lou and Deby Bleier, feature their fresh fruit sorbets and homemade ice creams and their original macadamia nut and honey butters in a parlor that fills one storefront in old Kapaau town. **FREE TASTES!!!** Across the street from the ice cream factory and also across from the King Kamehameha statue artist Gary Ackerman reflects on the landscape around him through his impressionistic style of painted art on display in **Ackerman Galleries**. Gary's combination of a free liquid style on canvas and varied techniques of painting allows him to successfully blend the colors of the natural environment. Both galleries also feature the works of other local artists.

If the drive up the Kohala coast and gallery hopping has got your appetite going at this point, maybe it's time to visit **Don's Deli** across from the King Kamehameha statue. Let Don prepare a sandwich from his large selection of cold cuts and cheeses or try one of his homemade vegetarian quiches or pastas. Don's Deli is a great place to relax before heading north to Pololu Valley.



Photo by Michael Stewart

The latest addition to downtown Hawi is the **Kohala Coffee Mill**. Owned and operated by Jon and Dixie Adams the historic Toyama building circa 1932 is now the home to a new coffee shop which will serve 100% Kona coffee at its espresso bar.

When you're done in town Hwy. 270 will lead you through North Kohala's fertile pasture lands, dense forests, and ultimately to Pololu Valley, which offers one of the best scenic view lookouts on the island. Along your way to Pololu there is **Wo On Gallery**, three miles past Kapaau town, which now occupies the old Wo On General Store, built by Chinese immigrants around 1920. The gallery hosts the works of only North Kohala artists, its youngest contributor being only 6 years old. Wearable art, sculptures, pottery, woodwork and watercolor paintings by Patrick Rankin can all be found at this local gallery.

If your interests lie in seeing all there is in this region **Chris' Bike Adventures** provides a "bike at your own pace" tour of the Kohala Mountains and its towns. The bike adventure is suited for all levels of riders and is comple-



Your Choice of 3 Biking Adventures: The Kohala Mountain Adventure

This predominantly downhill bike trip, suited to all levels of riders boasts panoramic views of Mauna Kea, Mauna Loa and Maui's Haleakala while you pass through lush pasture lands and quaint North Kohala villages. The trip finishes at a remote beach for lunch after stopping for a view of majestic Pololu Valley.

The Mauna Loa Challenge

This 54 mile 12 hour adventure descends 11,000 ft. to sea level through rugged volcanic terrain, ranchland and dramatic coastal areas. Includes Kohala Mountain Adventure with breakfast and lunch included.

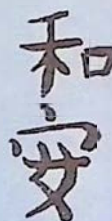
Mauna Kea/Waipio Off Roader!!!

326-4600

Fresh Tastes
"Old Hawaii" Feeling
in Hawi town

bamboo

LUNCH - TUES-SAT
DINNER - FRI & SAT
(808) 889-5555



**Wo On
Gallery**

featuring:
wood, watercolors,
wearable art,
and much more

Devoted to the artists
of North Kohala
and showing work by: Sandra
Gray, Jim Parker, Lesley Patton
and Patrick Rankin
7 mile past the 25 mile marker
on 270 North
(808) 889-5002

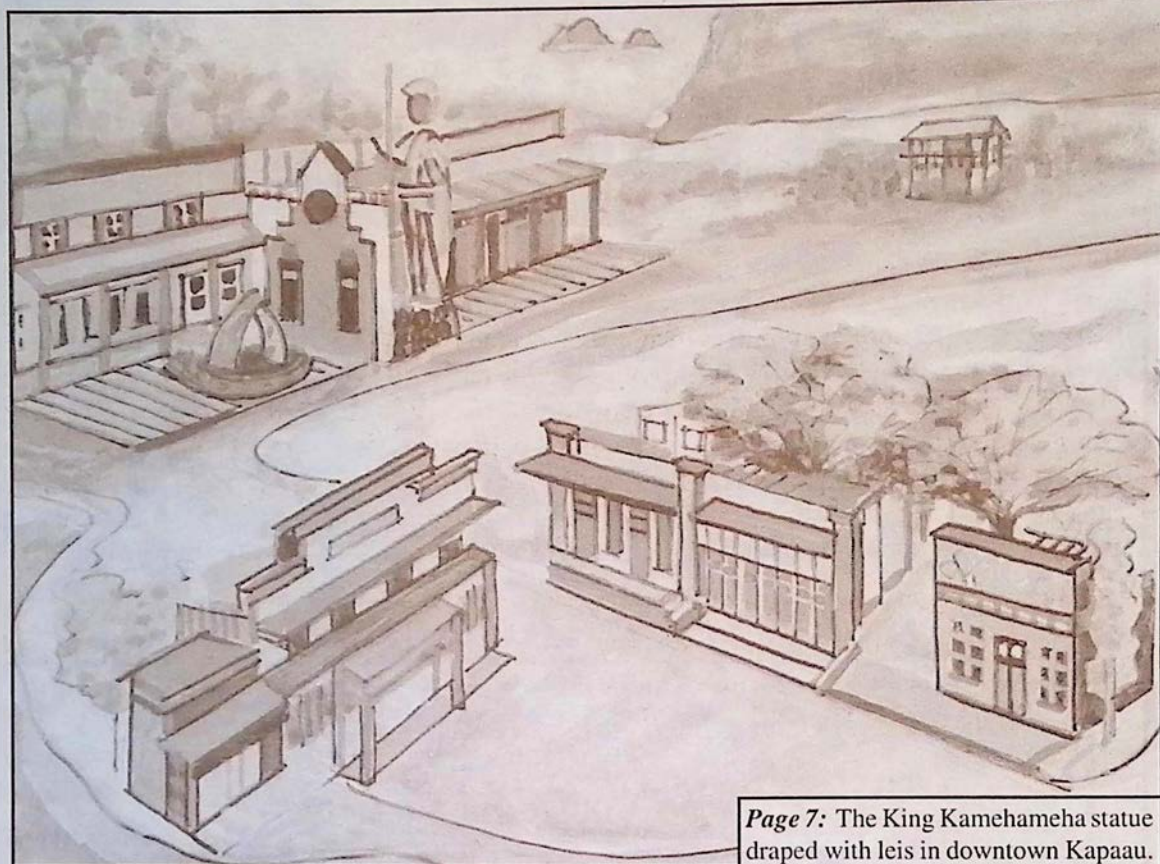


**Kohala Health Food
& Nutrition Center**

OFFERING...
HERBALS, VITAMINS, HEALTH
BOOKS, GIFT ITEMS, JEWELRY,
CANDLES, LOCAL PRODUCE
MASSAGE THERAPY
Open Mon.-Sat.
10:30 am- 6:30 pm
Located in Downtown Hawi
889-0277

mented with a breakfast consisting of fresh fruits and baked goodies. A picnic lunch at the beach follows the ride.

While driving along the coastline of North Kohala remember that if the skies are clear, you may be able to catch a view of the island of Maui looming from the other side of the Alenuihaha channel, which separates Maui from the Big Island. Between the months of December and April visitors are almost guaranteed a humpback whale sighting off the coast of North Kohala. This region of the Big Island is a particularly favorite spot for our migrating friends from the north. Perhaps the favorite way to cap off the afternoon in North Kohala is to stop in Kaiwihae and enjoy a Pacific Rim Italian meal at the original **Cafe Pesto** located in the Kaiwihae Shopping Center near the harbor. The reasonably priced meals are complimented by wonderful pastas, fresh salads and hand-tossed pizzas as well as an original selection of delicious desserts. If you are planning on visiting the town of Hilo Cafe Pesto can also be found in the old S. Hata Building near the bay front.



Page 7: The King Kamehameha statue draped with leis in downtown Kapaau.

Page 8: Kohala Coast Petroglyphs

Above: Impressionistic painting by Big Island artist Gary Ackerman of the North Kohala towns of Hawi and Kapaau.

Come and enjoy this peaceful region of Hawaii. You will see and taste the wonders it has in store for you.

Ackerman
GALLERIES

ORIGINAL WORKS BY
ISLAND ARTISTS
ORIENTAL ANTIQUES
PRIMITIVE ARTIFACTS AND GIFTS

Open daily 9:30 to 5:30 p.m.
Both locations in Kapaau town Hwy. 270 North

(808) 889-5971



KOHALA
PACIFIC
REALTY

Specializing in
North Kohala
LAND & HOMES

Phone (808) 889-5181
Fax (808) 889-5161

Located in the restored Toyama Building
Downtown Hawi

P.O. Box 307 Kapaau, Hawaii 96755

DON'S Family DELI

New...
Fresh Fruit
Smoothies &
Carrot Juice

10% OFF
all lunch orders over \$10
see our coupon

sandwiches, lasagnes, quiches,
pastas and chicken enchiladas
CAPPUCCINO & ICE CREAM

CAFE LOCATED ACROSS FROM KING'S STATUE
MON-FRI 8-6 SAT/SUN 8-5
(808) 889-5822



*Tropical
Dreams*

Homemade Ice Cream
Sorbets & Frozen Yogurt

Used By Top Chefs of the Islands
Windows Cafe

"Every seat has a view"

Come have lunch, but leave room for dessert
889-0505

OPEN DAILY: Mon.-Sat. 11-5 • Sun. 1-5



100% PURE KONA™ COFFEE

Hand Picked, Sun Dried and Truly Graded

Did you know that out of the **20 million pounds** of Kona Coffee bought and **consumed** every year under the name Kona only **2 million pounds** of that coffee is actually **grown** here in Kona? And the **frightening fact** of the matter is...that most Kona coffee drinkers around the world have no idea that what they're drinking is a coffee containing 90% of something other than Kona coffee. It's time for this deceptive labeling and misuse of the Kona name to end. In an attempt to preserve the coffee growing heritage



here in Kona and the gourmet reputation of our local coffee and to combat this widespread misrepresentation of the Kona name to sell counterfeit coffee we here at Coffee Times magazine unconditionally guarantee that the coffee you receive from us is farmer direct, contains only 100% Kona coffee and meets the State of Hawaii's highest grading standards. Enjoy the pure taste of the world's finest coffee and help preserve our local farm lands by buying only 100% Kona.

Our Mail Order Coffee Makes The Perfect Gift ~ Hotel Delivery Available ~ We Only Roast To Order!

ORDERING INFORMATION

Type	Roast	Lbs.	Total
_____	_____	_____	\$ _____
_____	_____	_____	\$ _____
_____	_____	_____	\$ _____
_____	_____	_____	\$ _____
_____	_____	_____	\$ _____
_____	_____	_____	\$ _____

Delivery Charges \$ _____

In U.S. please add \$3.50 for 1st pound & \$1.50 for each additional pound (Call for international fees)

Grand Total \$ _____

Please mail with check or money order to:
Coffee Times, P.O. Box 1092, Captain Cook, HI 96704

by American Express Credit Card

Am. Express Card #: _____

Exp. Date: ____/____/____ Name: _____

Signature: _____

Ship To: _____

Please allow up to 1 week for delivery

WE SHIP WORLD WIDE
1-800-750-KONA

In Hawaii Call: (808) 326-7637
P.O. Box 1092, Captain Cook, HI 96704

PEABERRY

The finest coffee bean available (The result of single bean growth in the usual two bean coffee cherry)

16.95/lb. 79.95/5 lb. 149.95/10 lbs.

EXTRA FANCY

The highest quality, high elevation, large single bean coffee

15.95/lb. 74.95/5 lbs. 139.95/10 lbs.

FANCY

Excellent quality, average sized bean, high cupping standard

13.95/lb. 64.95/5 lbs. 119.95/10 lbs.

PRIME

The choice bean of most specialty Kona coffee consumers.

10.95/lb. 49.95/5 lbs. 89.95/10 lbs.

FLAVORED KONA (Prime) COFFEE

Vanilla, Macadamia Nut & Chocolate Macadamia Nut

15.95/lb.

(please specify medium, dark or espresso roast)

Coffee Times



Don't Leave Home Without It.

We welcome the
American Express Card

continued from page 6

of poi, small fish, bananas and their favorite food of all, opihi (a small limpet that grows on the rocks along Hawaii's shoreline). Today, early morning local shoreline fishermen on the Big Island are stupefied by the sight of neatly piled empty opihi shells that often turn up on the rocks near the water. Who or what eats the meat in the shells and piles them in such a neat fashion before sunrise remains a mystery to this day. Explorers have found similar remains of crab shells in lava tube caves far from the waters edge.

It is widely accepted that a man who is unkind to these menehune will be punished by them and a person who expresses friendship will be rewarded by the work of many little hands. The tale of *Laka's Canoe* supports this theory. It was told by M.K. Nakuina in the "Hawaiian Annual" and printed in "Tales of the Menehune" by Mary Kawena Puku'i and Caroline Curtis.

LAKA'S CANOE

Laka stood among the great trees of the koa forest. "This is such a tree as my grandmother told me of," he thought. "It is straight and has grown strong fighting the mountain winds. Such a tree will make a strong canoe, one that can fight ocean waves." Then Laka prayed and went to work with his stone tool.

All day he worked. At last the great tree fell, and Laka went home, tired but satisfied. "Tomorrow I shall trim off the branches," he thought. "I shall cut the log to the right length for a canoe. Then I must shape it, but I have no skill in shaping a canoe."

When tomorrow came he could not find the log. "I should have marked the place," he thought. "Was it here or over there?" He wandered through the forest, but could not find the tree that he had cut. He cut down another and this time looked carefully to make sure of finding his log the next day.

But the next day there was no log! It seemed to Laka that he found the tree. The place was right, and there stood a tree just like the one he'd cut the day before. He rubbed his eyes. Was someone raising the tree that he cut down? He would try once more. So once again he cut down a tree, marked the place carefully, and went home to sleep.

The next day he returned at dawn. There stood the tree he had cut down! Someone had put it back in place, and not one mark of his stone tool was left upon its trunk. Laka stood looking, thinking, then returned to the village to talk with his grandmother.

Next day when he went to the forest he took a digging stick. Right by his chosen tree he dug a little ditch, then cut the tree so that it fell over the ditch. When he finished darkness had already reached the forest. Laka crawled under the branches of his fallen tree and hid in the ditch.

He had not waited long when he heard low, growling voices on every

side. He caught some words about lifting up the tree. "Now! Take your places." He heard the command clearly. The menehune must be all about the tree ready to lift it!

Quickly Laka scrambled out. The menehune ran in fright, but Laka had caught two - the chief and another man. "I shall kill you!" he said angrily. "You raised the tree that I cut down and wasted all my work. You deserve to die!"

The menehune chief answered fearlessly. "What good will our death do you? Can you shape a canoe, O Laka? Can you haul it to the beach - you, all alone? Set us free, and we will do this for you. We menehune can shape a canoe and haul it to the ocean. Will you set us free?"

"Yes," answered Laka slowly, "but if you do all this for me, what shall I do for you? I have not much for gifts."

"Build a shed for your canoe," he was told. "Then prepare a feast for us."

"I will do that," Laka promised. "I shall go down at once. Tomorrow I shall build the shed and prepare the feast."

Next day he built a canoe shed close to the beach and thatched its roof with leaves of coconut. As he worked, he wondered. Was it true the little men could shape and hollow a canoe all in one night? And would they haul it down? Filled with this wondering Laka again took the mountain trail. He reached the spot in the forest where his log had lain and could hardly believe what he saw. There, right where he had left the log, lay a canoe. It was all shaped and hollowed. Wonderful!

Laka hurried down to prepare the feast. He caught shrimps, cooked taro, and pounded poi. It was already growing dark when he spread poi and shrimps on a long food mat, then stumbled to his sleeping house. There he lay listening to a humming sound which came from the koa forest. "They are lifting my canoe," he thought.

As he listened the humming came again, louder and stronger, until the village was full of sound. Stillness followed, then a short hum as the canoe was put into its shed. For a time Laka heard the sound of tools as the canoe was smoothed, and side pieces and outrigger fastened on. Then came the growl of low voices while the menehune feasted on their shrimps and poi. Once more Laka heard humming as the little workers climbed the trail.

In the morning he found the canoe resting in its shed. As he walked about it admiring the work, neighbors came. "Laka!" they said. "We did not know you were such a good canoe maker."

"I'm not," the young man answered. "The menehune made this for me."

MACADAMIA NUT GROWERS

Hawaiian Macadamia Plantations, Inc., located in Honokaa, HI is currently buying macadamia nuts at .70/lb. N.I.S..

Pick up service is available at the Kona Marshalling Yard in (Kealahakua) on Tuesdays from 8am to 1pm. Accepting daily at Kohala and Honokaa locations. For more information please call 775-7201.



Located at Kona Bali Kai Condo,
76-6246 Alii Dr. by the Banyan
Surf Spot.

329-6010

FRESH HOME COOKED QUALITY

In our New Deli Location
Breakfast, Lunch & Dinner

Fresh Fruit Smoothies,
Deli Sandwiches, Quiches, Salads
(Home of the famous South Point Salsa)

And an outrageous Bakery:
Banana Split Cake, Kona Coffee Chocolate
Swirl, Lilikoi Cheese Cakes and more...

Stop by and try one of
our daily specials!



Holualoa
I N N

*"The finest B&B on this or
any other island in Hawaii. . ."*

Jerry Hulse, L.A. Times

*You are invited to visit this elegant
country estate overlooking Kailua Bay,
set amid coffee orchards and home
of Holualoa Kona Coffee Company.*



HOLUALOA
Kona Coffee
C O M P A N Y

*Nightly Rates, \$100-150 • Weddings & Events Welcomed
Coffee Hulling & Roasting*

For tours & information, call (808) 324-1121 or (800) 392-1812

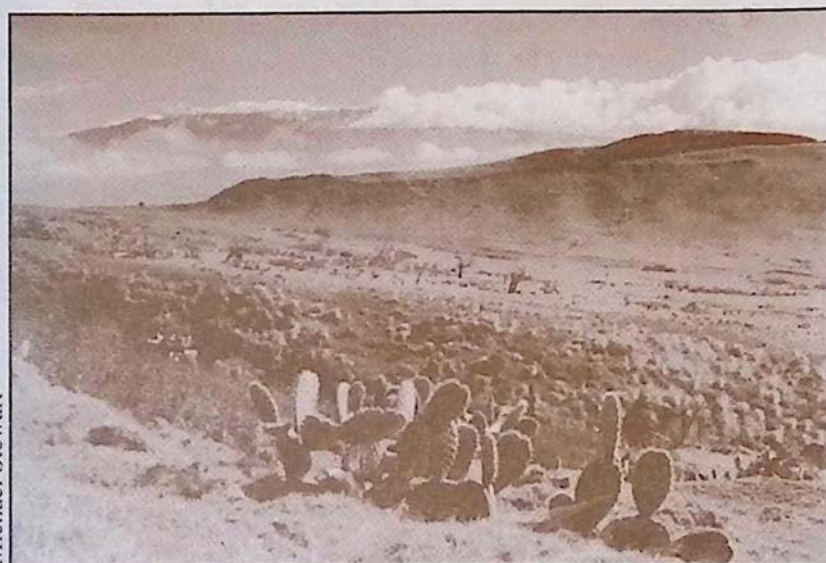
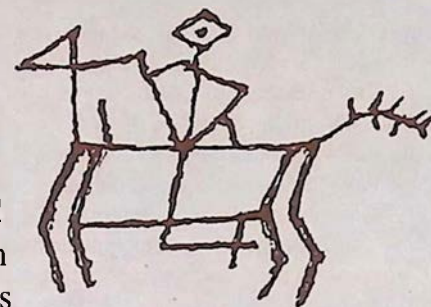
Waimea Country

Between snow capped Mauna Kea and the Kohala mountains the green hillsides of North Kohala roll along under wispy white clouds, and afternoon rainbows frequently stream their way from the skies above Waimea. Inside this landscape herds of grazing cattle can be seen meandering their way through sloping pastures filled with cactus and dry underbrush as Hawaiian cowboys called paniolos still ride horseback and work the ranges.

Ranching began in this region of the Big Island after King Kamehameha appointed, in 1815, a young seaman named John Parker to hunt and shoot the herds of wild cattle whose population had grown uncontrollably since their introduction to Hawaii in 1793. Parker, who accomplished his mission, managed to domesticate a herd of his own before marrying a Hawaiian chiefess. The marriage helped Parker to acquire the land that would later be used to found his 250,000 acre ranch in 1847. Today's existence of Parker Ranch as one of the largest ranches in the United States gives the outsider an idea of the magnitude of its size.

Today, the town of Kamuela, more often referred to

after its district name Waimea, is a town that still surrounds itself with a ranching lifestyle. The brightly colored Victorian houses and shops, tidy yards filled with flowers and skeleton remains



Michael Stewart

Paniolo Country

of wagons and wheels gives visitors the opportunity to see

Waimea continued on page 13



Discover the Best of Hawaii AT COOK'S DISCOVERIES

Open daily 10 a.m. to 6 p.m.

In Historic Spencer House circa 1850 - Waimea Center Next to McDonalds (Hwy 19)

(808) 885-3633

Discover proudly made in Hawai'i treasures including koa, sandalwood, coconut, mango & avocado boxes and bowls. Hawai'ian books and language tapes. Hawaiian music and hula implements. Hawaiian quilts, collectibles and authentic reproductions of ancient palaoa, tapa beaters, fish hooks, squid lures. Island wear by Nike'u, Sig Zane and Island Cowboy. Woven lauhala. Feather, Ni'lhau, wiliwili, kukui and puakenikeni leis. Custom sterling jewelry by former Cartier goldsmith and Mings. Originals and prints by distinguished Island artists including Herb Kane, Harry Wishard, Kathy Long and Doug Po'olua Tolentino. Pure Organic Kona coffee, triple chocolate chunk cookies, fresh Waipi'o poi and poi cake, lemon-macadamia and guava-rum truffles. Even Poi Dog Biscuits! Many goodies under \$15! Remember... Buy Hawaii.



Upcountry Connection

Gallery of Art & Antiques

Our Collection of Marushka Jewelry is the hottest catch on the Big Island!

A Bold, Eclectic Blend of Art Focused on The Big Island

Hand-Beaded Jewelry
Koa Furniture & Accent Pieces
Limited Edition Prints,
Original Artwork,
Bronze Sculpture,
Ceramics & Antiques

Waimea Center ~ Kamuela, Hawaii ~ Open Mon. - Sat. 10 AM to 6 PM ~ 885-0623

yet another sphere of the diversity of cultures that exist in Hawaii. Beginning a tour of Kamuela with a cup of java and a bite to eat at **The Waimea Coffee and Company** is a great place to start.

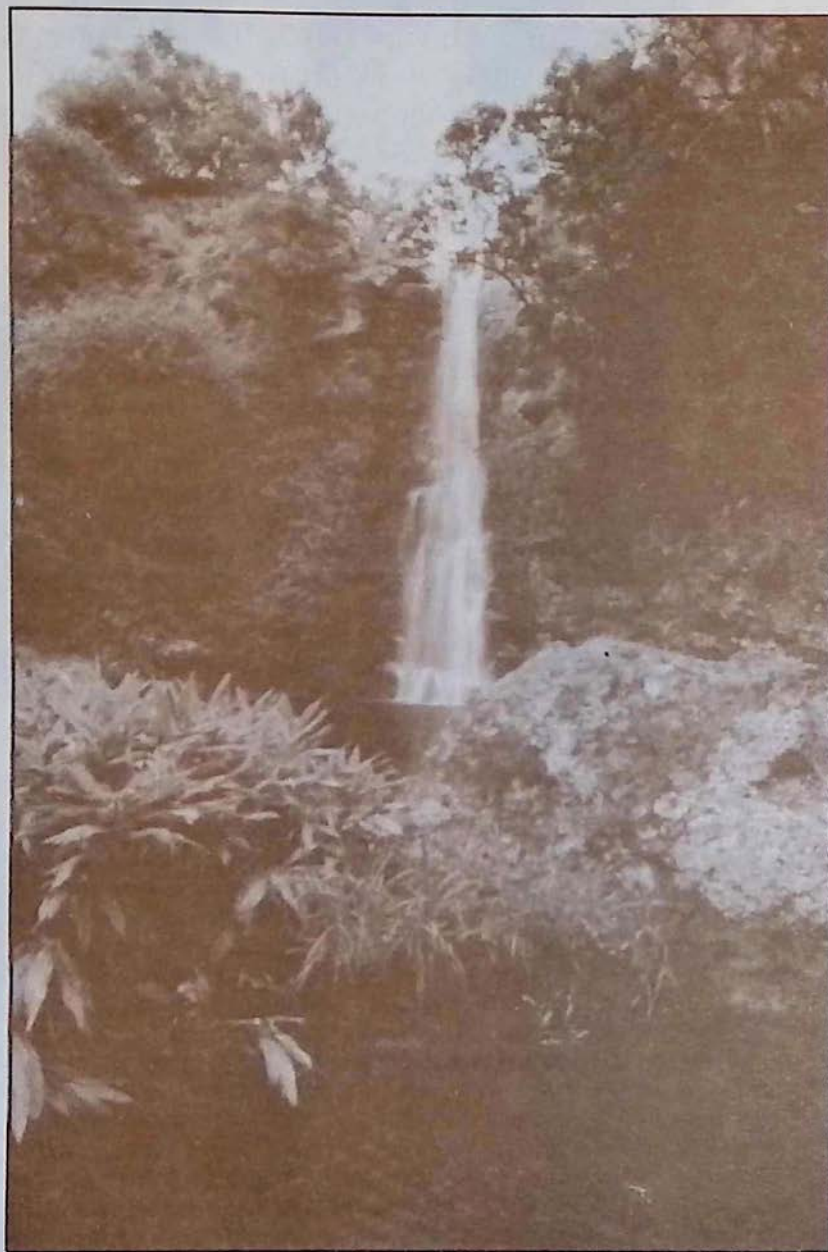


Photo by Michael Stewart

Botanical Setting of Waimea's Anna's Pond

WAIMEA COFFEE COMPANY

For a welcome break in your day
offering the best cappucino, gourmet treats & lunches
100% Pure Estate-Grown Kona Coffees

We mail-order anywhere!
1-800-854-5662 or 885-4472

In Waimea on Hwy 19
Located on Hwy. 19 in Waimea

Make sure you don't miss stopping at **Cook's Discoveries** in Historic Spencer House and **Up Country Connection** Gallery of Art & Antiques as well as **Princess Kaiulani Fashions**. All three shops are located in Waimea Center. At Cook's Discoveries the warm aloha of a 150-year-old restored home creates a unique setting for Cook's Discoveries' one-of-a-kind collection of treasures made in Hawaii by Hawaii's proud people. Look for the Hawaiian flags across from Waimea McDonalds. The marushka hand-beaded jewelry is a must see at Up Country Connection, which is often the spot for some of Waimea's most spectacular art showings that feature the works of both local and visiting artists. Princess Kaiulani, one of Hawaii's most beautiful Princesses, spent many of her favorite hours in Waimea. Now Princess Kaiulani Fashions in the Waimea Center (two doors from TCBY Yogurt) is a must for the discriminating shopper. Locally made designer muumuus and top national clothing brands provide a choice like no where else on the Big Island. And if women's apparel doesn't suit your fancy right now, see our 24K Hawaiian Gold coin jewelry or our unique gift items. You will also enjoy the antiques, from the turn of the century, that adorn this stylishly different boutique and the feel of beautiful Waimea, an early playground for Hawaii's royalty.

Princess Kaiulani Annual SUMMER SALE

Thru August 20th

Muumuus } 20% off
Sweaters }

Lingerie } 30% off
Dresses }
Casual Wear }
Gift Items }

Red Tags } 50% off



All sale merchandise is our regular quality stock and leading name brands!

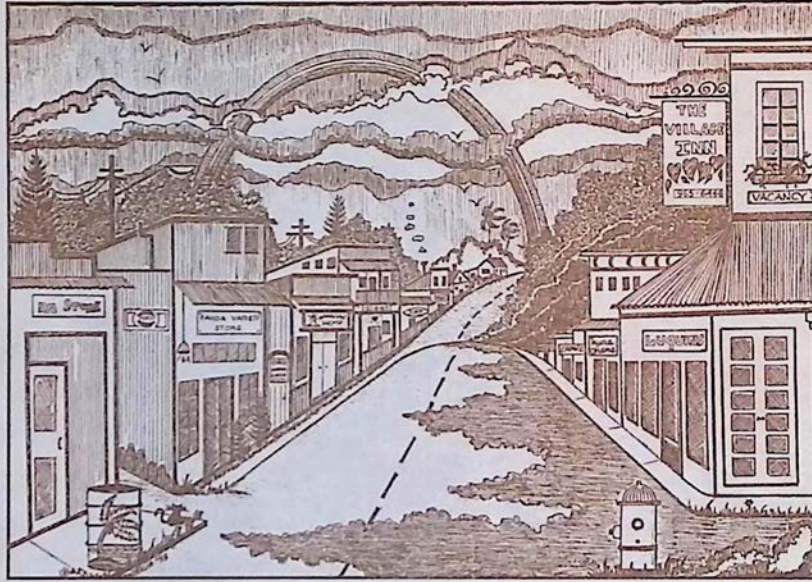
Princess Kaiulani Fashions
(Located near TCBY yogurt in the Waimea Center)

Store Hours: 10-6 M-F, 9-5 Sat. Closed Sundays
We accept cash, checks, Master Card and Visa

Historic Main St. Pahoa-Puna, Hawaii Quaint Shops, Local Food, Arts, Crafts, Theater

For visitors who want to experience the true feeling of old Hawaii, Pahoa village holds the key to this untouched past. First a rugged sawmill town then a sugar town and later a crossroad on the old railroad, Main Street Pahoa has maintained its western style storefronts and wood boardwalks in a charming turn of the century Victorian style.

Quaint shops from surf, to curio and restaurants span the flavors of the globe from Thailand, to Mexico and Italy and make Pahoa Village one of the most pleasurable and tasteful stops on the Big Island.



Drawing of Historic Downtown Pahoa Village by artist Patricia Borton

Call ahead to any of the friendly shops to see if there are any special events scheduled during your visit. Pahoa has the reputation of holding some lively and entertaining performances both on its Main Street and at the Akebono Theater, Hawaii's oldest theater.

Lodging in Pahoa is an alternative as well. The historic Village Inn, built in 1910, housed some of Puna's earliest travellers and still operates today. The rooms are clean and spacious with vintage victorian decor. The Bamboo House, located above Pahoa Natural Groceries is also available for those visitors looking to spend the night.

The countryside surrounding Pahoa is filled with natural wonders like the Lava Tree State Park, steam vents, groves of papaya trees and black sand beaches along the rugged Puna coast. Visitors are warned however that a prolonged stay in this Aloha time capsule may make leaving a very difficult task.

NATURAL GROCERIES
PAHOA
Organic produce Health Foods
Open 9 - 9 p.m.
Sunday 9 - 6 p.m.

The Godmother 965-0055
Breakfast, Lunch & Dinner
8 a.m. to 11 p.m.
EVERYTHING HOMEMADE
Delicious authentic
New York-style Italian cuisine
Located in historic Pahoa Village

Naung Mai
Thai Kitchen
"We serve Cheng Mai,
Bangkok & Phuket style cuisine."
Vegetarian Entrees offered
Mon. - Fri. 3 - 8:30pm
Sat. & Sun. 12 - 8:30pm
965-8186

THE VILLAGE INN
HISTORIC PAHOA
BUILT IN 1910
P.O. BOX 1987 • PAHOA HAWAII 96778
(808) 965-6444
LODGING & HAWAIIANA
CURIO SHOP
\$39.95 double & up

NATURAL EMPORIUM
PAHOA
Imports, Clothing,
Jewelry, Gifts,
Open 10 am to 6 pm

FOUNDED
1917
AKEBONO THEATER
Local
Performing
Arts Center
Plays, Movies, Live
Music
CALL
(808) 965-9943
or
see Coffee Times Calendar
for show schedule.

HAWAIIAN
HEMP COMPANY
PAHOA-HAWAII
HEMP FASHIONS
CLOTHING
FOOD
PAPER
LITERATURE
& ART
(808) 965-8600
Pahoa Village
Send \$2
For our catalog of products
P.O. Box 2056, Pahoa, HI 96778

PAPAYA'S PLANTATION
Elegant, Peaceful Lodgings, \$25.00 per person, 12 acres of Tropical
Wilderness. Expansive Ocean Views. Full Kitchen
Jivan (808) 965-7119 Rosie

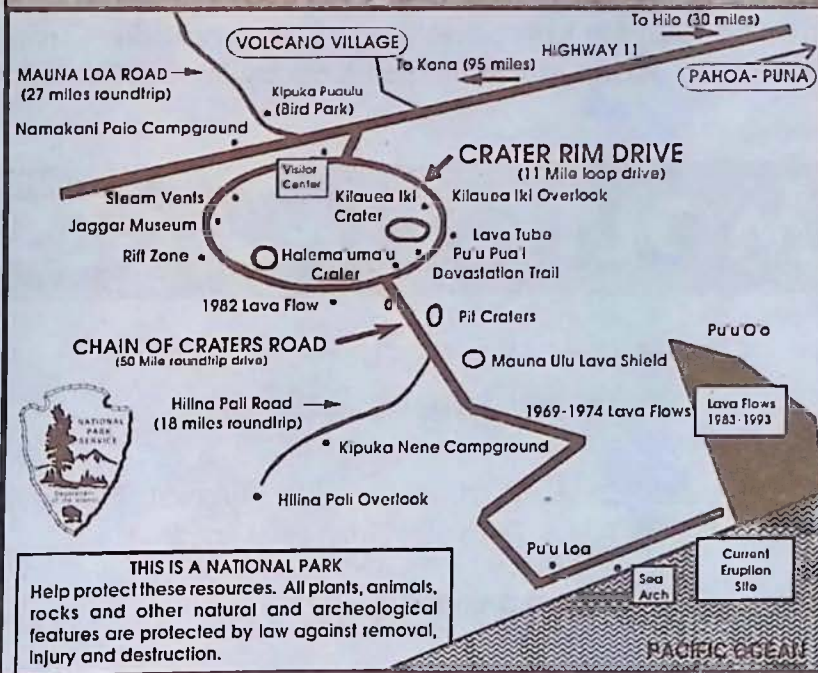
PAHOA HARDWARE
965-6459
OPEN 7 DAYS
CAMPING SUPPLIES
Plumbing, Electric, Nuts, Bolts,
Paint Supplies, Garden & More
P.O. Box 967, Main St.
Pahoa, HI 96778

LUQUIN'S
MEXICAN RESTAURANT
Chili Relleno, Carnitas,
Tamales & Taquitos
FREE CHIPS & SALSA
with Dinner
OPEN DAILY
11 a.m. to 9 p.m.
965-9990

BAMBOO HOUSE
Unique Private Lodging
in Downtown Pahoa
Call
(808) 965-8322
For Information

Volcano Region Information

photo by Michael Stewart



Volcanoes National Park has one entrance, off Route 11, 30 miles south from Hilo or 95 miles east from Kona. The park is open 24 hours a day all year round and requires a \$5.00 entrance fee per vehicle which is valid for 7 consecutive days. The hiker/bicyclist/bus passenger fee for people over 16 and under 62 is \$3.00.

When you enter the park during daytime hours you will receive a park brochure at the entrance station. If you enter the park after hours you may pick up the brochure at the Kilauea Visitor Center which is located a quarter mile from the entrance on Crater

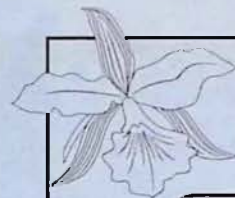
cont. on pg. 16

Twelve Romantic Rooms ~
Fabulous Fireside Dining Nightly 5:30 - 9:00 p.m.



...only minutes from Volcanoes National Park

VOLCANO VILLAGE ~ HAWAII ISLAND ~ (808) 967-7366



Akatsuka Orchid
GARDENS

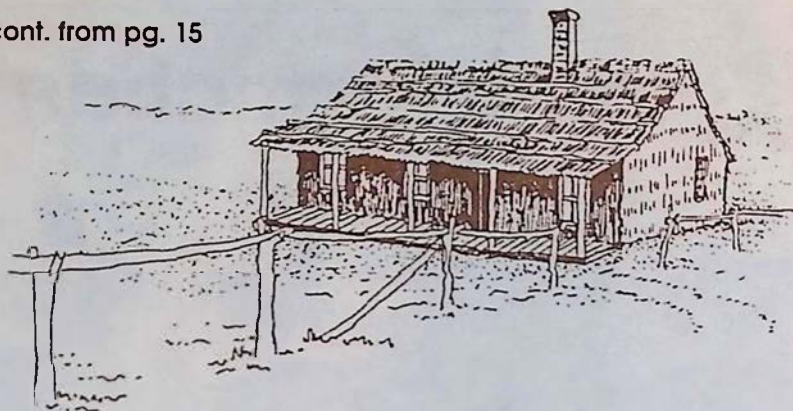
FREE GARDEN TOUR

Wander in awe through our covered garden of exotic orchids and island plants then help your self to a FREE orchid blossom. We feature Certified Hawaiian orchid plants, cut flowers & anthuriums. Take them home or we'll ship them for you!

LOCATED ON HWY. 11

22 1/2 MILES FROM HILO

(808) 967-7660 P.O. Box 220, Volcano, HI 96785



The Original Volcano House,

Now the Volcano Art Center at Volcanoes National Park.

Rim Drive. The visitor center is open from 7:45 a.m. to 5:00 p.m. daily.

Visitors are encouraged to take the time to carefully read the park regulations and guidelines. The volcano fumes that exist in the park may create a health hazard for pregnant women, infants and people with heart or respiratory problems. People at risk should avoid stopping at the Sulphur Banks, Halema'uma'u Crater and other areas where volcanic fumes are present.

Overnight trips in the park require a backcountry permit that can be obtained at no charge at the Kilauea Visitor Center.

Coffee Times

Once inside the park enjoy the 25-minute movie on eruptions shown hourly at the visitor's center. Other attractions are The Thomas A. Jaggar Museum three miles inside the park along Crater Rim Drive, The Volcano House, Thurston Lava Tube and scenic vistas. Depending on the timing of your visit you might have a chance to see the volcano erupting. A 45 minute drive to the end of Chain of Craters Road and a short hike will get you to the most recent lava flow area. The new coastline is unstable and can collapse into the sea at anytime without warning. Obey all park signs. Do not enter any closed areas. The park also offers many other hiking opportunities which are mapped out in the park brochure.

Before leaving you won't want to miss The Volcano Art Center, adjacent to the visitor center. The Art Center hosts the works of some of Hawaii's finest artists. The Center is also responsible for many of the art, cultural, environmental, and community activities happening in the park. The dates and times of these activities are listed in the Coffee Times calendar.

A reminder to drive slowly and carefully while touring the park as it will help to protect Hawaii's endangered state bird, the nene.

Lodging, gas, camping supplies and dining all can be found in Volcano Village just a short drive from the park. When in the village stop by Wood Carver's



RETREAT...RELAX...RELIVE...

HAWAII

P.O. Box 758 ~ Volcano, Hawaii 96785
808-967-7986 ~ 1-800-455-3803

MOLTEN IMAGES

Professional Island Photography
by Michael T. Stewart

Weddings, Portfolios, On Site Availability,
Fine Art Prints

(808) 334-3270

Aloha Volcano Vacation Rentals

Modest to Luxurious
Accommodations,
Romantic Hideaways
for Two or Homes with
Great Family Value.

(808) 967-7683
1-800-845-LAVA

VOLCANO ART CENTER

Hawaii Volcanoes National Park
Gallery open daily 9 a.m. to 5 p.m.

AUGUST EXHIBIT: "Dimensions of Hula"
Photographs by William Waterfall
Sculpture by Lark Dimond-Cates
August 6-31

HO'OLA'A on August 27
Investiture of the Royal Court at noon
Crafts demonstrations on the Gallery porch
Hula kahiko performance on the pa hula at 2 p.m.

Call 967-8222 for information.

CARSON'S

VOLCANO COTTAGE
Volcano's most private and inviting B&B



Experience The True Fantasy
Of Hawaii ~ Forested Garden
setting ~ Separate Guest
Rooms & Cottages ~ Hot Tub ~
Wood Burning Stove ~
Amenities Without The Price
(808) 967-7683
1-800-845-LAVA



Print of the Volcanoes by M. Dumont D'urville circa 1836
from Voyage Pittoresque Autour Du Monde

Corner. This cozy shop is filled with wood arts from around the world including Native American and Hawaiian crafts.

Because of the remote location of the volcano, the numerous Bed & Breakfasts existing in the region are a favorite choice among visitors staying in Volcano. A complete listing of Volcano B & B's can be seen on page 33 of Coffee Times. A few particular favorites are My Island Bed and Breakfast, Carson's Volcano Cottages, Chalet Kilauea and Hale Ohia Cottages. If you are looking for seclusion, Carson's Volcano Cottages are tucked away in the region's rainforest and offers guests the most in privacy as well as a hot tub and even wood burning stoves to keep you warm on those cool volcano nights. Chalet Kilauea, The Inn at Volcano, features rooms decorated with art



Woodcarvers Corner

A Showcase of

Hawaiian
Modern and
Native American Art

Jim and Chris McLuckie, Owners



(808) 985-8518

No Booking Fee



967-7244

Volcano Reservations

SELECT STATE WIDE ACCOMMODATIONS

Bed & Breakfasts ~ Cottages ~ Vacation Homes ~ Condos
Your Key To Hospitality
BUDGET TO LUXURY ~ GREAT VALUE

Chalet Kilauea - The Inn at Volcano



EXPLORE TREASURES FROM AROUND THE WORLD

Unique Theme Rooms ~ TreeHouse Suite ~ Vacation Homes
Jacuzzi ~ Fireplace ~ Library ~ Garden

Gourmet Breakfasts

967-7786

Afternoon Tea

from around the world and even a treehouse suite, a unique alternative for couples looking for that romantic getaway. My Island Bed and Breakfast, located on a five acre botanical estate, is an 1886 missionary home offering guests the choice of rooms in either the main house or garden apartments. Located off of Hwy. 11 are the private Hale Ohia Cottages surrounded by bonsai-style gardens and moss covered grounds. The suites and cottages are both spacious and comfortably outfitted. Ohia Gardens offers guests all the comforts of home with their own kitchen, lounge, TV etc. The two guest rooms are separate from the main house and have a shared bath.

Perhaps one of the most memorable dining experiences on the Big Island can be found at Kilauea Lodge, which features continental cuisine beside the historic fireplace of friendship. The mountain lodge also hosts twelve romantic rooms for overnight visitors. One spectacular stop you do not want to miss when you are in the volcano region is Akatsuka Orchid Garden. Seeing is believing when you arrive at this exotic and tropical garden. Visitors are welcome to free tours and complimentary orchids during their visit.

For Park Information Call: (808) 967-7311

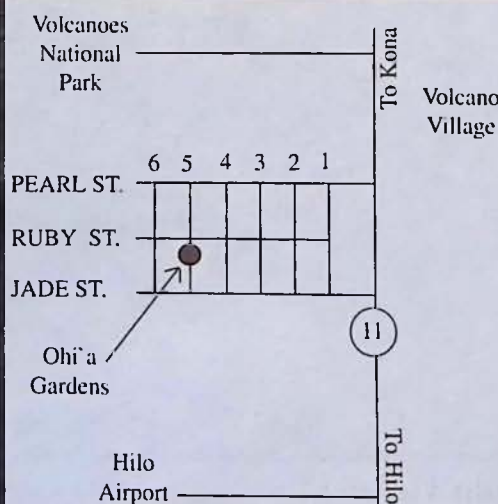
For Eruption Update Call: (808) 967-7977

Ohi'a Gardens Bed & Breakfast

Your home away from home

Special Rates for Groups or
Golfing Parties.

A Kitchenette and a Barbecue
Grill is available and restaurant
facilities are located close by.



RATES:

\$55.00 Dbl. Occupancy
\$40.00 Single
\$10.00 Per Child
\$20.00 Extra Adult

Call or Write for
Reservations
1-800-985-7051

11-3827 Fifth St.
P.O. Box 661
Volcano, Hawaii 96785
Charles Mohica (Mgr.)

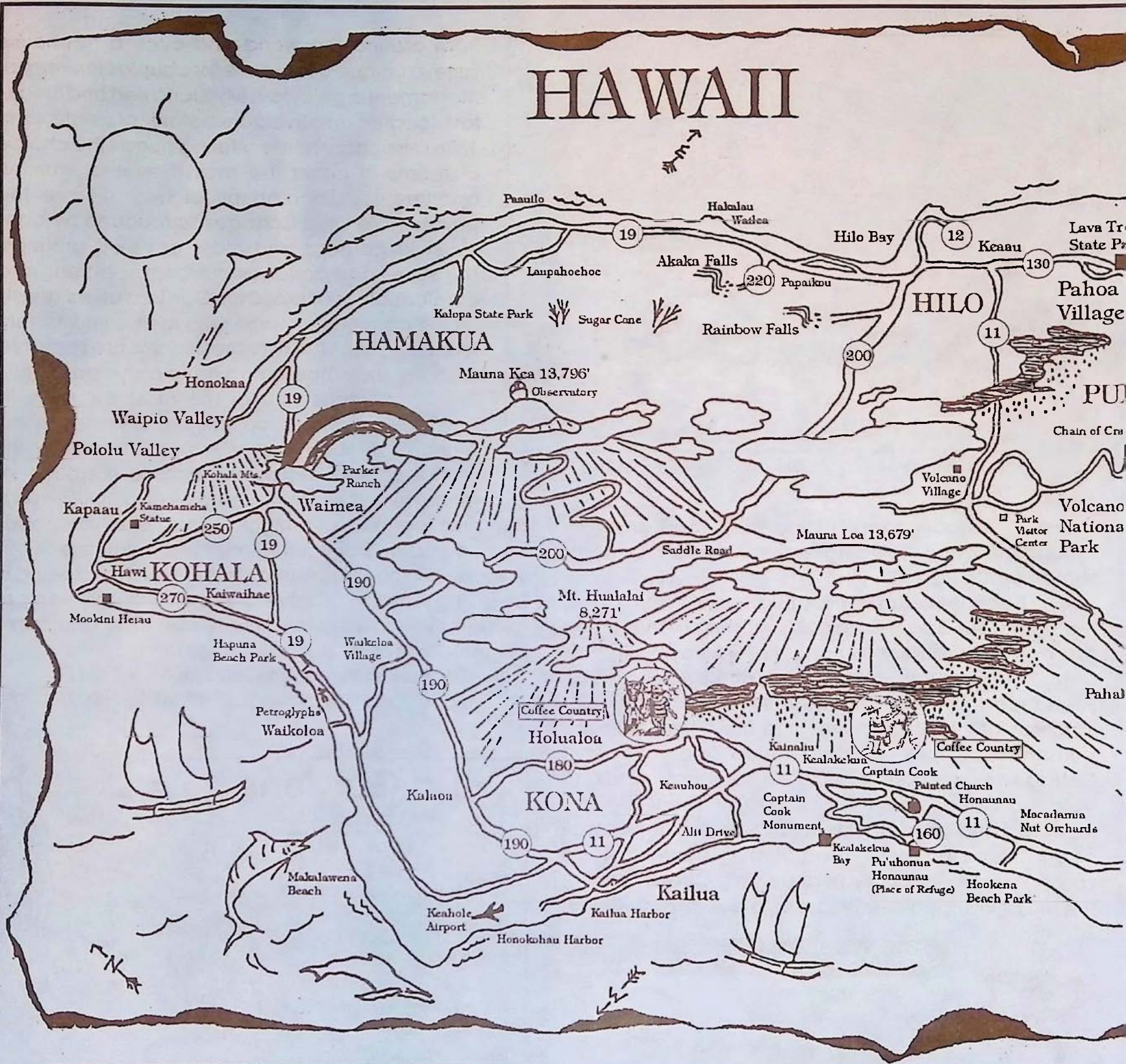
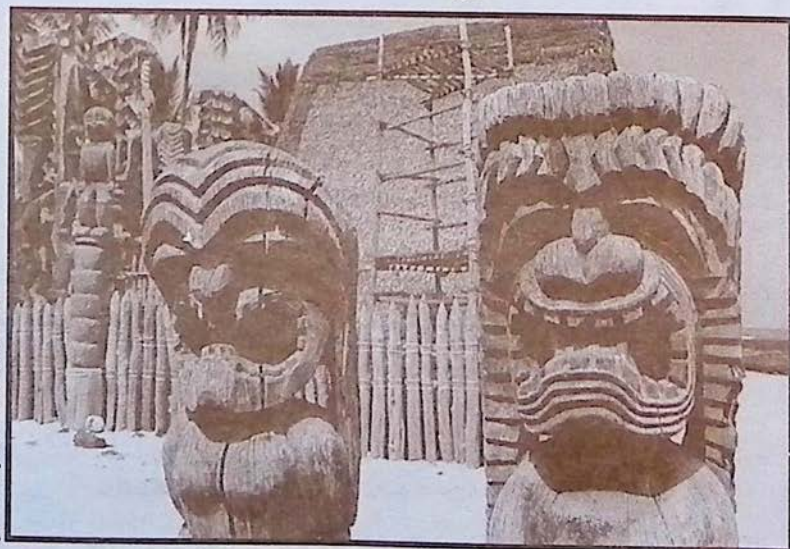


photo by Michael Stewart



Waipio Valley Floor

photo by Michael Stewart



Place of Refuge Tikis



photo by Michael Stewart



Burning Sugar Cane



photo by Michael Stewart

East Hawaii Waterfall



Old Kau Homestead

What To See...



HISTORIC HILO

Early 20th century Hawaii happily lives on in the storefronts and buildings of this yesterday town. Outside the town are magnificent Akaka Falls and Hawaii Tropical Botanical Garden to the north.



VOLCANOES NATIONAL PARK

Home of Pele, the Hawaiian goddess of fire. A region of unique features, volcanoes and a diverse biosphere. See page 6 of Coffee Times for volcano information.



CAPTAIN COOK MONUMENT

The spot in Kealahou Bay where English navigator, Captain James Cook was killed in 1779.



PU'UHONUA O HONAUNAU

An ancient Hawaiian village that is now a national park. Located in south Kona. Stop and see the Painted Church along the way on Hwy 160.



WAIPIO VALLEY LOOKOUT

Spectacular views into a lush valley of waterfalls, rivers and cascading cliffs. (4WD, horse, or a hike are necessary for access into the valley)



WAIMEA COUNTRY

In the heart of Big Island ranch country this western style town sits at the base of Mauna Kea.



AKAKA & RAINBOW FALLS

Two separate waterfalls northwest of Hilo. Easily accessed by car and short enjoyable paved hikes.



HEIAUS & PETROGLYPHS

Both can be found on the Kohala coast. The petroglyphs can be seen by following a path on top of the lava rocks at the Royal Waikoloan Resort.



POLOLU VALLEY LOOKOUT

A northern valley lookout. The road there will take you through friendly N. Kohala towns and perhaps a view of Hawaii's neighboring islands.



PUNA DISTRICT

Hosts the rustic western style town of Pahoa in addition to wild roadside orchids, steam vents, Lava Trees State Park and black sand beaches.



SOUTH POINT U.S.A.

The southern most point in the U.S. It boasts a magnificent ocean side drive through rolling green hillsides filled with Holstein cows grazing above a coast line of rugged cliffs and crashing waves.

photo by Michael Stewart

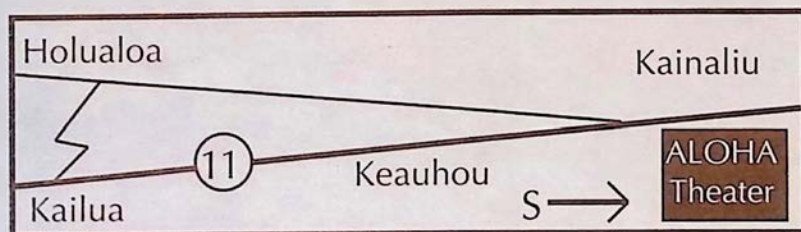
ALOHA THEATER COMPLEX IN KAINALIU



Located just a short drive south on highway 11 from Kailua-Town, central to Kona's coffee country, is the historic

Aloha Theater Complex built in 1932. Local theater performances produced by the Aloha Performing Arts Center and various other local community groups are on stage every month at the complex that also hosts a Cafe, Village Store and Dance Academy. At the cafe visitors can enjoy breakfast, lunch and dinner, which including many vegetarian specialties. A second floor bake shop turns out breads, cakes and cookies that fill the glass case just inside the front door to the theater.

Relax on the outside lanai while you sip a cup of pure Kona coffee, something very few restaurants on the Big Island actually serve. Wander next door to the Village Store and find Hawaiian gifts, fresh fruits and always a local tune playing through the speakers. To round off this Aloha experience, the local Academy of Dance run by Reni Damron is always alive with people of all ages practicing tap, ballet or jazz in the hall located at the north end of the complex.



BALLET

TAP

JAZZ



Damron's
ACADEMY
of DANCE



ALL AGES

(808) 322-8119

P.O. Box 325, Kealahou, HI 96750



8 a.m. to 6 p.m.
Monday - Saturday
8 a.m. to 8 p.m. Fri.
9 a.m. to 4 p.m. Sun.
322-9941

Great gifts for All Occasions

Groceries, organic foods, fruit (fresh & dried)
vitamins, teas, coffees, island music tapes



"DELICIOUS HOMEMADE GOODNESS"

Open for breakfast, lunch & dinner

8 a.m. to 8 p.m. Mon. - Sat

Sunday Brunch 9 a.m. to 2 p.m.

THE BEST BURGERS IN KONA

MEXICAN SPECIALTIES

FRESH BAKED BREADS, CAKES, COOKIES...

ESPRESSO BAR

INTERNATIONAL BEER & WINE SELECTION

IN THE HEART OF KONA COFFEE COUNTRY

322-3383

ALOHA PERFORMING ARTS CENTER ALOHA COMMUNITY PLAYERS PRESENTS

P.O. Box 709, Kealahou, Hawaii 96750 (322-9924)

Supported in part by a grant from the State Foundation on Culture and the Arts

DOCTOR
DOLITTLE



Imagine what could have happened if Abraham's family stayed together and worked it out. Come and find out. Play written by Gloria Blum. Music composed by Mikl Estrin.

Aug. 5, 6, 1994
8:00pm
Aloha Children's Theater presents
Hugh Lofting's animal lover's adventure-comedy.

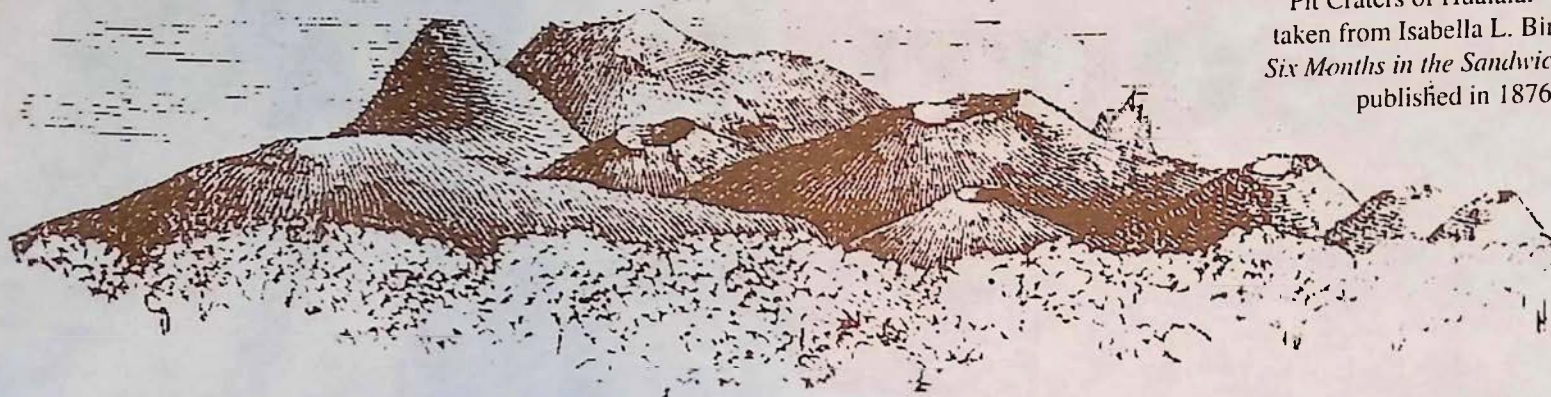


Aug. 19, 20, 27, 1994
8:00pm

THE ORIGINAL PLAY FESTIVAL ALSO PRESENTS:

MON	Aug. 22	Two Brothers, Cop & Con	Drama by Peter Charlot
TUE	Aug. 23	Red Harvest Unferno	Drama by Victor Pisaurro & Ron Cook, Farce by George Effinger & Luna Edwards
WED	Aug. 24	The Heart of the Matter	Comedy by Tom Byrne
THU	Aug. 25	Water From the Moon	Drama by E.F. Strayhorn with J. Andrew Kunellis & Ross Levy
FRI	Aug. 26	Queen Emma, Blossom of Hawaii	Historical Drama by Beatrice Levin
Sun. Aug. 21 & 28 @ 4pm Discussions/Critiques of the Plays (free Admission)			

"Pit Craters of Hualalai" drawing
taken from Isabella L. Bird's book
Six Months in the Sandwich Islands
published in 1876.



HUALALAI

a poem by Ray Freed (first appearing in *Hawaii Magazine*)

In a dry month
clothes cling to skin
scorpions bask in the heat
on the a`a lava hard and hot
under our feet

we rest near Honokohau
your black hair sweet with awapuhi
finger tracing a petroglyph etched
into the lava, a stick man, a canoe,
a memory drawn by a memory.

This is my heritage, you say,
a mark on a rock. A sea bird
glides by riding winds north
from Tahiti and we turn
to watch it, eyes resting on

the unnatural symmetry of squares and grids
highways houses power poles
marching up the green slope of Hualalai,
legacy of dozer and chainsaw,
carving of a different kind.

KEEP KONA COUNTRY
BUY A FARM!!!



ARNOLD RABIN (R) (GRI)
PRINCIPAL BROKER

A REAL ESTATE CONCERN-HAWAII

(808) 322-3677 / FAX: (808) 322-6119
P.O. BOX 766, CAPT. COOK, HI 96704 / (RES) 328-2386

SERVING THE KONA COFFEE
COMMUNITY SINCE 1980

Island
Books

ISLAND BOOKS

FINE USED BOOKS BOUGHT & SOLD

Hawaiiana, Classic & Modern
Literature, Mysteries, Art, Mythology,
Miscellany

Located in Kainaliu
1/4 mile south of the
Aloha Theater

322-2006

P.O. Box 645
Kealahakua, HI 96750



ROASTED FRESH DAILY

See Our Coupon for a
FREE POUND OF COFFEE

CAFE LOCATIONS:

The Original Bad Ass Coffee Co., 322-9196

Kainaliu Next to Crystal Star Gallery

The Bad Ass Coffee Co., 326-4637

Kailua Waterfront Row on Alii Drive

The Bad Ass Coffee Co. Kailua Warehouse 329-8871

Next to Giuseppe's Italian Cafe on Alii Drive

The Bad Ass Coffee Shack of Kaiwihae 882-7019

Above Cafe Pesto in Kaiwihae Shopping Center

Bad Ass Coffee Shop, 875-8558

1280 S. Kihei, Maui

INDEPENDENT DISTRIBUTORS

Hawaii Mac Nut Plantation Inc., 775-7201 (Honoka'a),

Long's Drugs (In Hilo & Kona)

Keep In Touch, 885-7191 (Parker Ranch Shopping Center)

Uncle Billy's Hilo Bay Hotel, 322-2825 (Hilo)

The Bad Ass Coffee Company

1-800-338-7139 (808) 322-2825

SOUTH KONA

Kona Coffee Farms, Kealahakua Bay, Captain Cook Monument, Pu'uhonua O Honaunau, The Painted Church

There perhaps is no other region on the Big Island shrouded in more history than the district of South Kona. Whether it be the origins of Kona coffee, the ancient Hawaiian village setting of *Pu'uhonua O Honaunau* (Place of Refuge) National Park, or the Painted Church nestled along the hillside overlooking Kealahakua Bay, the spot where the famous English explorer Captain Cook met his fate in 1779, South Kona will keep the historically minded visitor busy weaving their way through its network of mountain roads.

High on the slopes and off Hwy. 160 is The Painted Church, where sometime between 1899 and 1904, Father John Velge, a Catholic missionary from Belgium painted images on the interior walls of the church depicting the biblical scenes of heaven and hell. Near The Painted Church is the rural setting of **Wakefield Gardens Restaurant**. Owner Arlene Wakefield serves lunch daily at her botanical garden setting in Honaunau. Look for her famous Papaya Boat with tuna salad, it has become a favorite dish among the local population and continues to thrill visit-



photo by Michael Stewart

Tiki Carvings at Pu'uhonua O Honaunau National Park in Honaunau.

ing diners. The restaurant is open for lunch only and includes a free tour of the botanical gardens surrounding the estate.

If your time in South Kona allows for it leave room in your stay for the "Narcissus" at therapist Sheila Pattison's **Querencia Spa**. Her massage treatment includes a jacuzzi, herbal facial, full body massage, beverages, light pupus and a catered gourmet dinner in the Spa's Tea Room. Custom catering is available to meet all your needs.

From the wonders of The Painted Church, Middle Kei road empties out onto Napoopoo Road before passing **Bay View Farms and Mill**, family owned and operated by New Hampshire native Andy Roy and his wife Rosalyn. Over the distant hum of pulping and grading machines the sweet and damp smell of freshly pulped coffee cherry fills the air during the fall and winter coffee season. An extensive system of outlying drying decks and groves of coffee trees cover the landscape in front of the now visible cliffs of Kealahakua Bay, which in the hazy distance plummet their way seaward. Bay View Farms has re-

HO'ONANEA

*A Unique Experience in Vacation
or Business Travel Accommodations*



"One place you will never forget" Ho'onanea is a private estate overlooking Kealahakua Bay in Captain Cook. Two private apartments each with complete facilities, tile bath, magnificent art and koa furniture by Jerry Benson, and large outside tile lanais overlook the gardens and the ocean. Outside, beauty is everywhere - manicured lawns, flower gardens, ponds, two heated swimming pools with waterfall between, spa, barbecue area, etc.

Truly, there is nothing like it Hawaii. Rates are \$80 daily \$500 weekly, \$1800 monthly until December 15th. (25% higher in winter) Special rates for visiting families of kama'ainas. You are welcome to preview for your next visit.

(808) 328-9445



An artists cooperative located in the headmaster's quarters of an old Japanese schoolhouse in Honaunau, this site offers a glance into older and quieter Hawaii. A wonderful place to view fine, affordable local art.

Find us at SKEA on Hwy. 11 between mile markers 106-105 on the makai (ocean) side of the road.

Cottage Gallery

at SKEA

Paintings
Sculpture
Pottery
Stained Glass
Jewelry
Quilting
Wearable Art
Candles & Woodwork

328-9392

OPEN Tues-Sat 9am-5pm



Featuring:

"The Narcissus"

A Very Special Private Affair

A romantic candlelight massage for couples followed by a catered supper and pupus.

Insurance & Work Comp.
Accepted

mat. 2225 mat. 3053

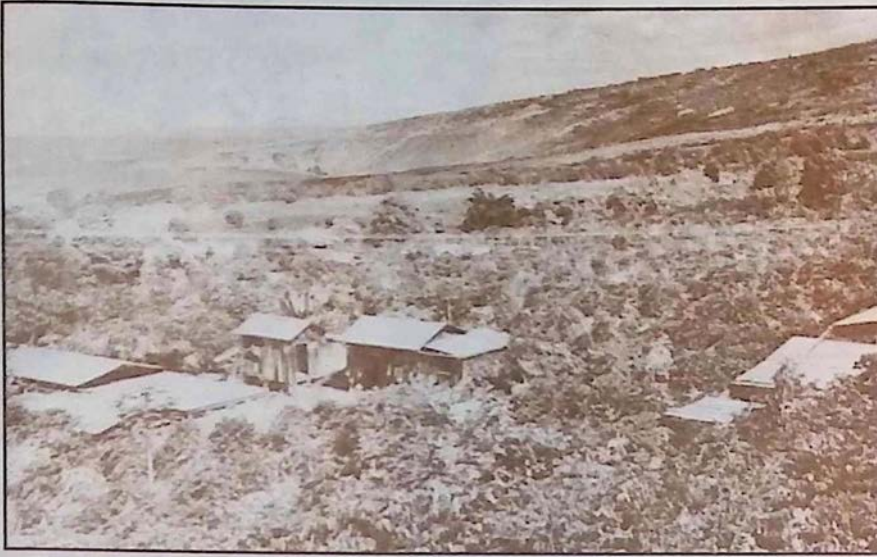
Massage, Body Wraps & Pacs, Injury Therapy, Jacuzzi & Hydrotherapy

*Located near the Place of Refuge
in Honaunau*

(808) 328-2569



Querencia Spa Tea Room



Looking north across the South Kona coffee country into Kealahou Bay, circa 1930, courtesy of Kona Historical Society.

cently added a rural coffee and gift shop to their operation, where guests will have the opportunity to 'cup up' some 100% pure Kona coffee. Farm and mill tours available at Bay View are also available at the upslope Old Hawaiian Coffee farm and mill that dates back to the late 1800's. For personalized group tours call ahead.

At the bottom of Napoopoo Road is Hikiau Heiau at Kealahou Bay, and a white stone monument across the bay that marks the spot where Captain Cook was killed in 1779. The story behind Cook's death was that it was the result of a failed attempt by Cook and his soldiers to take the high chief Kalaniopuu hostage in return for a cutter that was stolen the night before. Cook, who had come south to

the Hawaiian Islands seeking shelter for the winter months, was in search of a northwest passage to England.

A lower coastal road connects Kealahou Bay to Pu'uhoanua O Honaunau (Place of Refuge) National Park. In the early years of Hawaiian civilization it was the Place of Refuge that people who broke *kapu* (sacred laws) would attempt to flee. If the *kapu* breaker could reach this sanctuary his life would be spared. Some of these *kapu* that governed the common people included not being allowed to walk in the footsteps of the chiefs or to touch their possessions. Other rules forbade commoners from eating foods reserved for offering to the gods, and women were not allowed to eat with the men. The gathering of wood, seasons for fishing and the taking of animals as well as the *hula* were also controlled under the *kapu* system. Other features at the park are *lokos* (ancient fish ponds), *hales* (thatched roof structures that served as homes), *heiaus* and ancient rock walls. Visitors are usually provided with live demonstrations of ancient Hawaiian crafts such as the building of canoes and tikis at the park.

Back out on Hwy. 11 the **Cottage Gallery** hosts the works of area artists with many affordable pieces being offered as the perfect mementos of your stay in South Kona.

If you are looking for exclusive and private accommodations in this region of South Kona, **Ho'onanea** is prepared to accommodate your lodging needs. The cliff side setting of Ho'onanea, owned and operated by your hosts David and Mary Randall, allows guests a unique experience in business or vacation accommodations. The home is decorated in koa furniture, includes private baths, and lanais that overlook tropical gardens and spectacular Kealahou Bay. Adrienne's Bed & Breakfast serves continental breakfasts on a lanai that boasts ocean views. Private baths/entrances, hot tub and rooms with king and queen size beds in this custom cedar home rounds off your stay.

Old Hawaiian Coffee

1870 Farm

COME TOUR OUR HISTORIC COFFEE FARM

Take a **FREE** tour of our farm for the real story of how coffee is produced. We are located off Highway 11 in Honaunau, one tenth of a mile south of mile marker 105, just after the mailbox on the mauka side of the road.

"We'll take you from the tree to the roast."

Misha Sperka (farmer/owner)

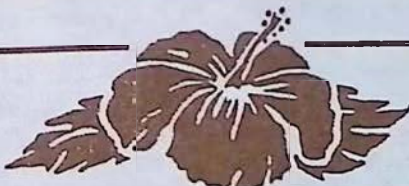
(808) 328-2277, 84-5042, A Mamalahoa Hwy., Captain Cook, HI 96704

HIGH QUALITY MODERN COFFEE PULPING MILL

Specializing only in 100% pure estate grown Kona Coffee



CERTIFIED ORGANIC
H.B.G.A.



FREE BOTANICAL
GARDEN TOUR

Buy one get one Free Papaya Boat filled
w/Tuna Salad & Herb Dressing!!!
see our coupon

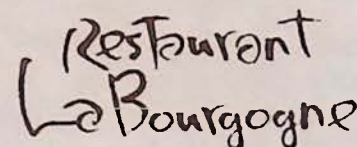
Homemade sandwiches, soups, full vegetarian
fare, Kona Coffee, fresh baked pies
OPEN 11 am to 3 pm (7 days a week)
(808) 328-9930 P.O. Box 18, Honaunau, HI 96726

A TRULY RURAL DINING EXPERIENCE



Located in the heart of coffee country, Hwy. 11 south to
Hwy. 160 (Painted Church & Place of Refuge)

EDWARD'S AT THE TERRACE



Big Island Dining Experiences



HILO

CAFE PESTO: (pgs. 29) Cafe Pesto has extended its service to the historic S. Hata Building in downtown Hilo. While the cuisine remains similar to what is offered at the original Kawaihae location diners can experience the tastes of wood fired pizzas and local dishes such as fresh fish and lomi lomi served on a bed of noodles. Organic produce and edible flowers complement the reasonably priced food which is always "an adventure in taste".

KOHALA

BAMBOO RESTAURANT & GALLERY: (pg. 8) At Bamboo you will find warm "Old Hawaii", featuring fine Hawaiian Regional Cuisine and "Local Style" food. Located in a fully restored historic building, Bamboo is a tropical restaurant, with "the best atmosphere on the island!" Here, local people gather in the deep old wicker chairs for passion fruit margaritas, Hawaiian entertainment, and Sunday Brunch. Try to catch one of their "theme nights" for a truly special evening. Browse and find a gift in the Kohala Koa Gallery of fine art and Pacific handcrafts. Open for Lunch & Dinner: Tuesday-Saturday till 9:30pm. Sunday brunch, 9-2:30pm. Closed Mondays.

CAFE PESTO: (pg. 7) Cafe Pesto has earned a reputation as an innovator of provocative island cuisine specializing in Pacific rim pizzas, pastas, salads and seafood served in a setting of casual elegance. The menu draws upon fresh organic produce from Puna and edible flowers and herbs from Hualalai and Volcano. With locations in downtown Hilo and south Kohala's Kawaihae, Cafe Pesto is reasonably priced and always, "an adventure in taste".

DON'S FAMILY DELI: (pg. 9) Just 6 miles before the end of the road there is an oasis of food and drink. A variety of meats, cheeses and breads. That's what makes it a deli. Also bagels, cream cheese, and lox and cappuccino make it a good place to sit and talk. Our garden room faces the King's statue across the road. To round out the menu we cater to vegetarians with quiche, enchiladas and lasagnes. We always have two soups, fresh carrot juice and our famous fruit smoothies and remember that everything travels well; to the end of the road at Pololu Valley lookout and the beach parks near by. Deserts, salads and dip ice cream also. Plenty of parking and always a refreshing breeze.

WAIMEA COFFEE AND COMPANY: (pg. 11) Located on Hwy. 19 as you drive through beautiful upcountry Waimea. Sample the finest world-class coffees, cappuccino and gourmet treats at this friendly oasis. David Ellis and his cheerful staff will make you feel at home at this cozy country cafe-a great place to stop for lunch or for a welcome

DON'S Family DELI

break in your day. Enjoy a variety of estate-grown pure Kona coffee as well as gourmet coffees from around the world, and take advantage of their easy mail order service to send coffee home. A perfect way to savor the relaxed pace and quality lifestyle of this beautiful area.

KONA

ALOHA CAFE: (pg. 20) The Aloha Cafe is located in colorful Kainaliu. Open for breakfast, lunch and dinner, the cafe boasts a sunny garden lanai overlooking rolling meadows and shining ocean. Quality & freshness best describe the food. Fresh squeezed orange or carrot juice and fruit smoothies quench any thirst. With an emphasis on vegetarian meals, our fish and pasta specials are complemented by an extensive wine & beer selection. From homemade soup to Mexican entrees to delicious cakes and cookies from our own bakery, the food is fulfilling and reasonably priced. Finished off with our 100% Kona coffee or espresso treats, the Aloha Cafe is a satisfying dining experience. Remember our Sunday brunch from 9am to 2pm.

EDWARD'S AT THE TERRACE: (pg. 26) Edward's at the Terrace is Kona's only ocean front restaurant featuring the cuisine of the Mediterranean region of Europe. Edward's is located on the grounds of the Kamaloa Condominiums in Keauhou, and is open for breakfast, lunch and dinner from Tuesday thru Sunday. Let the soft crash of the waves soothe your mind as you dine on such things as couscous grilled shrimp and babaganous, or robust fisherman's soup served under a puff pastry crust. For lunch you may select an old familiar favorite such as salade nicoise topped with fresh grilled tuna or one of the best burgers you'll have anywhere. Breakfast offers such treats as apple spice sausage patties and a family special of eggs and bacon.

LA BOURGOGNE FRENCH RESTAURANT: (pg. 36) Located just 3 miles south of Kailua-Kona this small, intimate restaurant makes you think you might be at a delightful French Country Inn. Chef/Owner Ron Gallaher features the simple, flavorful food of the Burgundy Region of France created from the freshest of local ingredients. In addition, La Bourgogne's wine list includes quality selections from Burgundy and California at modest prices. Open Monday through Saturday from 5:30pm to 10:00 pm. Reservations recommended at 329-6711. All major credit cards accepted.

SIBU CAFE: (pg. 27) Serving classic style Indonesian cuisine Sibu Cafe blends its sidewalk cafe atmosphere with its flavorful combination plates and international beer and wine selection to create the perfect outdoor dining experi-

ence at Banyan Court Shopping Mall in the bustling downtown area long Alii Drive. Owner Peter Weinstock attributes the success of his restaurant to the talent and dedication of his staff, many of whom have been with him for several years. All food is prepared using only fresh ingredients with a heavy emphasis of garlic in many dishes. Sibu's reputation for serving large portions and its well known brown rice has lifted its reputation among local diners.

WAKEFIELD GARDENS & RESTAURANT: (pg. 23) For that old time feeling provoking life-long memories visit Wakefield Gardens & Restaurant. Enjoy relaxed charm while dining amid the personal, friendly, uncrowded, fragrant botanical atmosphere. World-wide letters relate our best features. Aloha Spirit-a warm welcome giving an "at home" feeling: Old Time Hawaiian Music, Fresh - Clean - Wholesome Food; Something for everyone and our Strawberry Papaya filled with special tuna salad received 4 stars in Gourmet Magazine; Kona hot or iced coffee, Kids cheeseburgers, vegetarian fare, homemade macadamia nut pies, reasonable prices. Free botanical garden self-guided tours. Open 11am - 3pm. Spread the word - the magic of romantic Hawaii still exists. Aloha!

PUNA

THE GODMOTHER - RISTORANTE ITALIANO: (pg. 14) A pleasant surprise awaits you. Located amid romantic surroundings on Main Street in Historic Pahoa Village, the large menu features delectable pasta selections and traditional New York-style family recipes. With indoor-outdoor dining, the Godmother is serving breakfast and lunch from 8am until 3 pm and dinner from 5 pm until 11 every day. Stop by, meet the family, enjoy the ambiance and savor the food. Daily specials, a full bar and a friendly staff combine to create the perfect occasion. Major credit cards welcome. Ciao Bella!

VOLCANO

KILAUEA LODGE: (pg. 15) Well known for Chef/Owner Albert Jeyte's Continental-local cuisine, Kilauea Lodge is located in the cool sub-alpine rain forest region of Volcano. The misty region encourages a hearty appetite and Chef Albert, whose menu favors fish and fowl, does not disappoint. An inspired wine list, helpful staff, Hawaiian decor, and historic Fireplace of Friendship, make Kilauea Lodge a memorable experience. Open nightly 5:30-9:00pm. Reservations recommended. Located one mile Hilo-side of Volcanoes National Park.

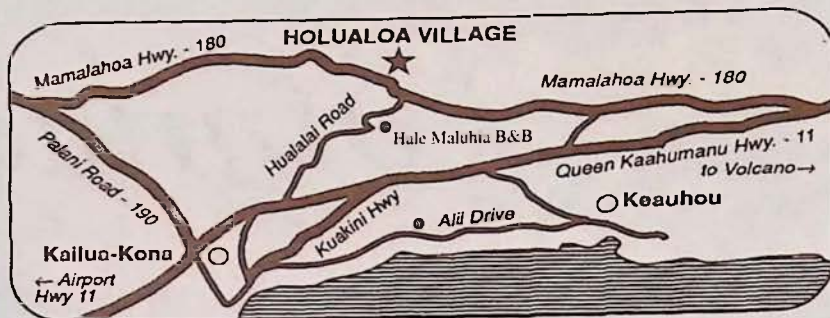


Holualoa Aloha & Art

Days pass slowly in the artist's retreat town of Holualoa, almost like the gentle mountain breezes which weave their way through the groves of coffee trees lining the slopes of Mt. Hualalai. Steeped in natural beauty and tradition, this little mountainside coffee town blends a touch of today's art with a passion for the simpler life of the past. The village's many private galleries showcase the works of many local artists in a wide array of mediums.

When you are done visiting the galleries, the friendly local espresso bar, **Holuakoa Cafe**, will undoubtedly snatch an hour or two from your day and maybe more if you decide to indulge in the homemade cake and pastry selection. Every Thursday night the sound of acoustic guitars may be heard in the night air strumming over a chorus of 'gone happy' coffee drinkers packing the cafe for Holualoa's only night time entertainment. (Give cafe owner, Meggi Worbach, a call at 322-CAFE for an up to date scoop on her local entertainment schedule).

If you are looking for a place to spend the night, **Hale' Maluhia** (House of Peace) Bed and Breakfast is



located below the village on Hualalai road. This rambling home offers guests a sense of seclusion and a touch of paradise and is outfitted with several lanais, an outdoor spa, kitchen and even office facilities.

Make it a point to wander up for a visit to Holualoa you will love this adorable country town.



Live Music Every Thursday
Holuakoa Cafe, 7:00 to 10 pm

Hale' Maluhia Bed & Breakfast

GRACIOUS KONA PLANTATION LIVING UP-COUNTRY COFFEE LAND

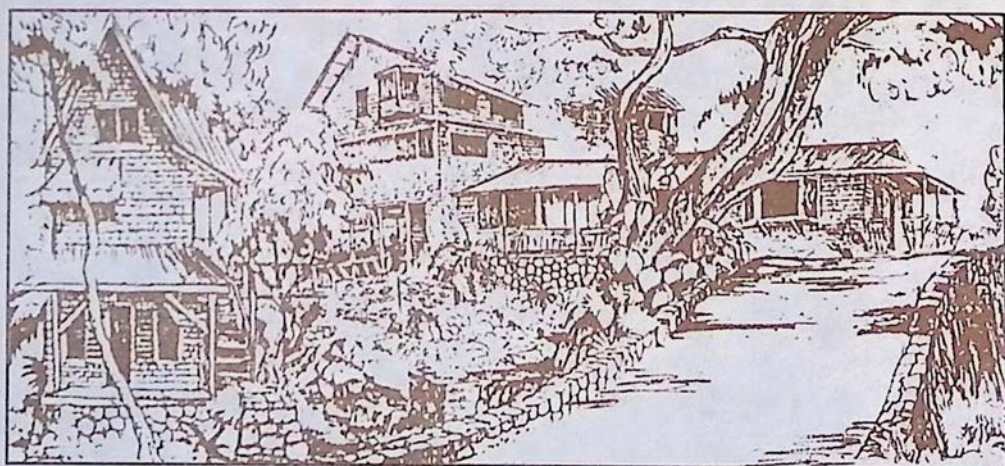
- * Just the right touch of Old Hawai'i.
- * Big rooms/beds and private baths.
- * Chinese Slate & Tile Spa with Jets.
- * 3 miles to Village. Easy Airport Access
- * \$55-\$110 Dbl. with Full Breakfast

For reservations or a FREE brochure write or call:

76-770 Hualalai Rd. Kailua-Kona, HI 96740

Toll Free 800-559-6627. (808) 329-5773.

Fax (808) 326-5487

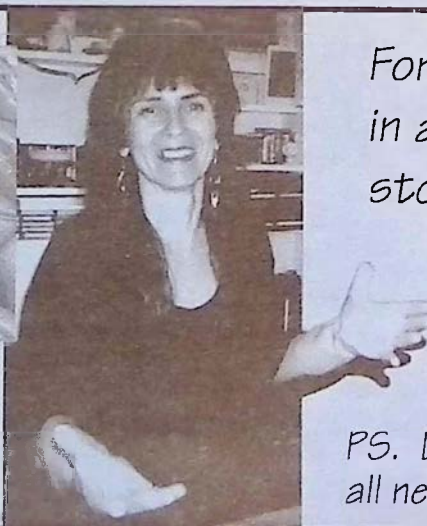


Holuakoa Cafe

Espresso Bar

HOURS: Mon-Sat 6:30am-5pm; Thurs nites 7-10pm
Closed Sunday.

322-CAFE



For that delicious coffee drink
in an upcountry atmosphere,
stop on by Holualoa's most
Happin' Scene...

Love, *Meggi*

P.S. Don't forget to come in and hear our
all new live music on Thursday nights!

Kailua-Kona

We landed at Kailua (pronounced Ki-lee-ah), a little collection of native grass houses reposing under tall coconut trees, the sleepiest, quietest, Sundayest looking place you can imagine. Ye weary ones that are sick of the labor and care, and the bewildering turmoil of the great world, and sigh for a land where ye may fold your tired hands and slumber your lives peacefully away, pack up your campbells and go to Kailua! A week there ought to cure the saddest of you all.

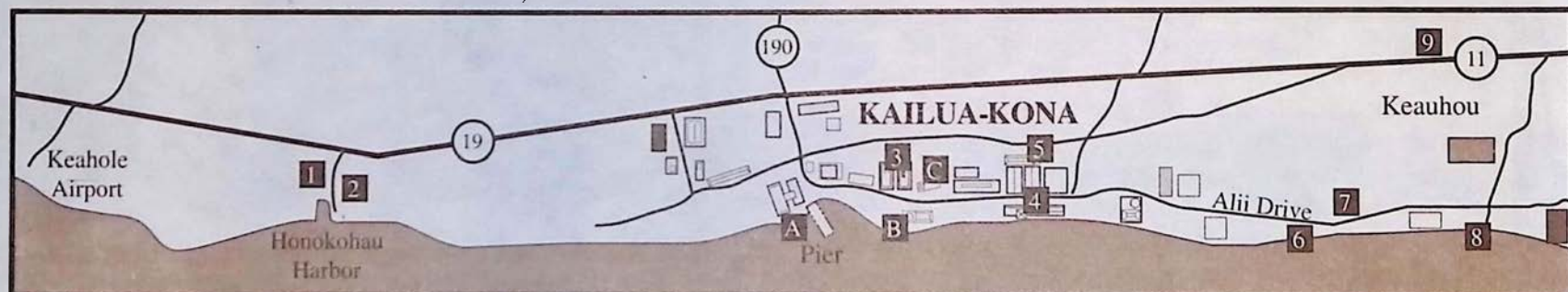
-Mark Twain 1866

1. Kona Kai-Yak (Rentals and Tours)
2. Impulse Charters (Sport Fishing)
3. Sibu Cafe (Indonesian Cuisine) located inside Banyan Court
4. Moto Photo (One Hour Photo Developing)
5. Kona Marketplace Cinemas
6. Jill's Country Kitchen (Deli and Bakery)
7. Adrienne's Casa Del Sol B&B
8. Edward's At The Terrace (Mediterranean Classics)

9. La Bourgogne French Cuisine (French Classics)

HISTORICAL SIGHTS:

- A. Ahuena Heiau (Constructed to honor the god Lono, Ahuena was King Kamehameha's center of rule from 1813 until his death in 1819)
- B. Hulihee Palace (Built in 1838 the palace was a vacation home for Hawaiian royalty)
- C. Mokuaukaia Church (Founded during the 1820's Mokuaukaia was the first Christian church in Hawaii)



IMPULSE CHARTERS

Affordable Sport Fishing

1/2 & Full Day Charters

For Reservations During
Your Stay on the Big Island
Call Today or for a Free
Brochure write:

FREE LUNCH
with full day charter

Capt. Roger Christiansen
73-4343 Ama Ama St.
Kailua-Kona, HI 96740

Located at Honokohau
Harbor (808) 325-7749



KONA MARKETPLACE

CINEMAS

Now Featuring the Summer Blockbuster

"The Lion King"

FREE 3 HOUR PARKING WITH VALIDATION
at the Kona Marketplace on Alii Drive, Kailua-Kona
showtime info. call 329-4488

KONA OCEAN FRONT Adrienne's Casa Del Sol Bed and Breakfast Inn

(House of the sun - a traditional Bed and Breakfast)

Ocean Front/Views From Every Room & Suites (\$80-\$150), all with Private Baths, Breakfast Buffet Served By Inground Swimming Pool/Ocean View Spa Area, Relaxing Atmosphere.

Summer Special: 25% discount on 2 day stay or more!

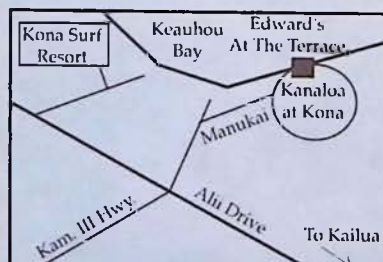


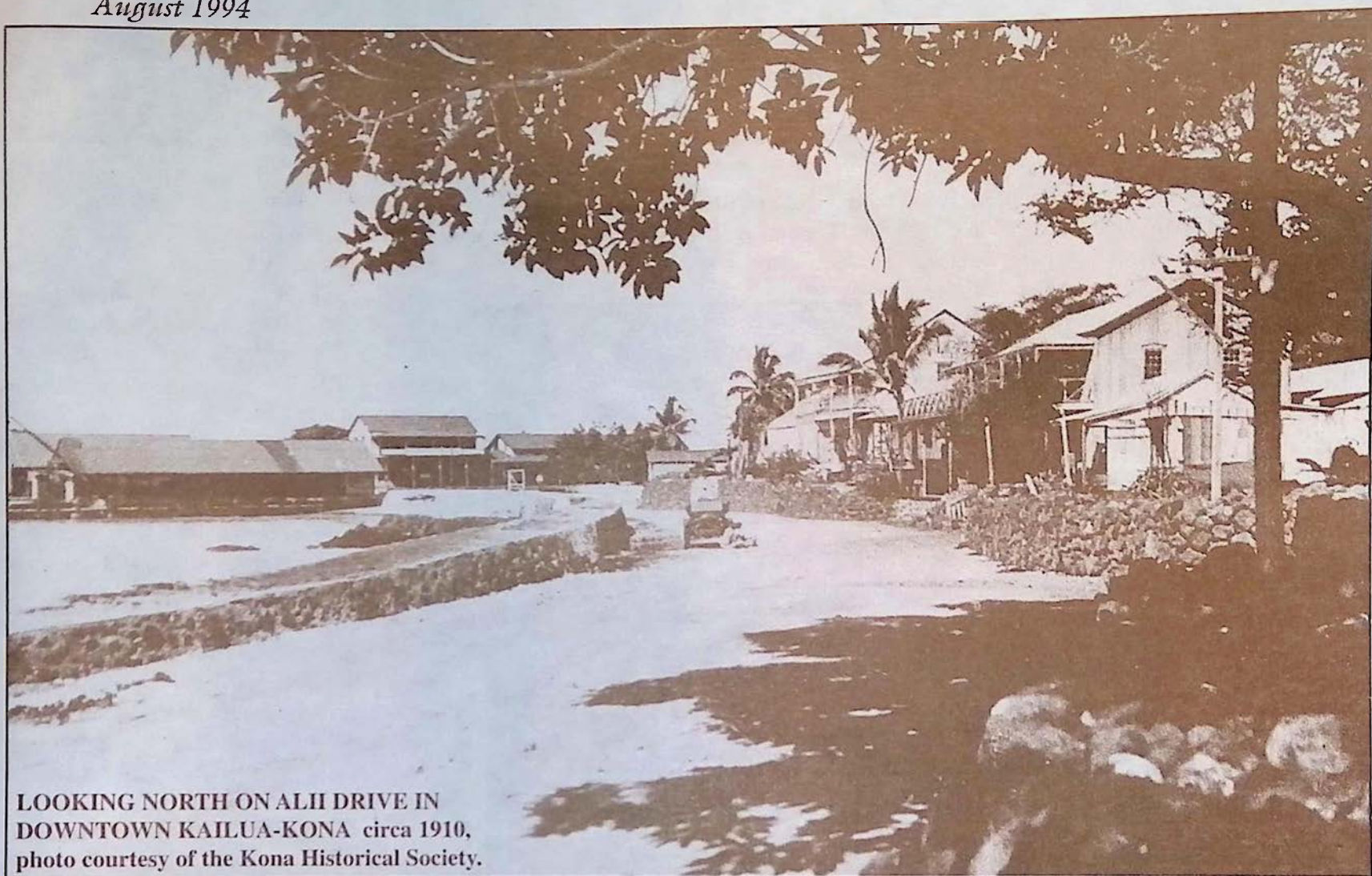
77-6335 Alii Dr., Kailua-Kona, HI 96740, (808) 326-CASA(2272)

EDWARD'S AT THE TERRACE

Featuring Mediterranean Classics, Ocean Side Tues. - Sun.
Serving Breakfast, Lunch & Dinner

322-1434





LOOKING NORTH ON ALII DRIVE IN
DOWNTOWN KAILUA-KONA circa 1910,
photo courtesy of the Kona Historical Society.



Vegetarian Specialties
Fresh Ingredients

"SIBU CAFE serves the best and the most interesting, moderately priced food in Kailua-Kona."

~Hawaii Handbook '92

"One of the best places to eat on the Island...almost erotically good offerings."

~San Francisco Chronicle

"Delicious Indonesian food in a casual setting. They also have...vegetarian dishes and good karma."

~Lonely Planet Travel Survival Kit

Open 7 Days A Week 11:30am - 9:00pm
Banyan Court Mall, Downtown Alii Drive, Kailua-Kona
329-1112 • No Reservations • No Credit Cards

ONE HOUR MOTOPHOTO™

FREE SET OF PRINTS

with every roll of film developed

SEE OUR COUPON

329-2080 Kona Inn 322-8091 Keauhou

Located at: Kona Inn Shopping Village (1 hour) on Alii Drive
& at the Keauhou Shopping Village (overnight service)

GENTRY'S KONA MARINA,
HONOKOHAU HARBOR,
KAILUA-KONA



SEE OUR COUPON
FOR KAYAK RENTAL

RENTALS/SALES/TOURS

Custom Kayak Tours Around The
Big Island, Day & Overnight Trips
To Remote Island Destinations.

all levels

(2 hour introductions, half or full day trips)

(808) 326-2922

EAST HAWAII AND HISTORIC HILO

When you talk about the old Hawaii, at least the one that hasn't been touched as much today by the long arms of commercialization and development, you cannot help but to mention the East Coast on the Big Island. At the center of all this is old town Hilo, seeing a revitalization of spirit thanks to the effort of the Downtown Hilo Organization is busy restoring and preserving the storefronts of this yesterday town. Aiding this effort are the wealth of new businesses occupying Hilo's old buildings.

One of the brightest spots has been the renovation and remodeling of the S. Hata Building by **Cafe Pesto**. This new restaurant has maintained the building's Renaissance Revival style of architecture and filled the air with smells of wood oven baked pizza and Pacific Rim Italian cuisine.

To add to this old Hawaii feeling are the daily Suisan Fish Market Auction and the Hilo Farmer's Market which held every Wednesday and Saturday in Downtown Hilo.

Outside the town to the north are the Hawaii Tropical Botanical Garden, located along a 4 mile coastal scenic route, and Akaka Falls with its self guided pathways that take visitors over ravines and past several other waterfalls before ending up at the grand daddy of them all, Akaka.

When you are done sight seeing, lodging in Hilo is a snap and can accommodate every type of visitor. The magnificent and luxurious **Hale Kai Bed and Breakfast** on the bluff above the ocean overlooks Hilo's premier surf spot, Honolii. Expect nothing less than gourmet breakfasts and plenty of privacy. Hale Kai also has available a private cottage facing a pool and ocean. If you are looking to stay within walking distance to downtown Hilo stop in at the affordable **Wild Ginger Inn** which features a jungle garden and stream setting overlooking Hilo Bay. The 1922 **Haili House Inn**, located across from the Lyman museum, is uniquely decorated in vintage Hawaiian eclectic decor and is one of the most popular

lodging opportunities for visitors seeking that feeling of old Hilo during their overnight stay. If a stay in the Hawaiian countryside is what you are seeking, head seven miles north out of town to

Papaikou and check in at **Hale Lamalani** vacation rentals. Situated at 1,000 feet above sea level this country retreat offers plantation style lodging with all the serenity one could ever desire.

After leaving Hilo you don't want to miss the drive north to Waipio Valley which takes you over scenic gorges that were once crossed by cane hauling trains in the hey day of sugar cane production. The plummeting waterfalls and river mouths under the extensive bridge systems leading north up the Hilo Coast are definitely an awesome sight. Akaka Falls State Park and the village of Honamu can be reached by taking Hwy. 220 off of the main route, Hwy. 19 north. See the map. Once you reach the Park a short paved hike will trail you past a network of smaller waterfalls, lush and colorful tropical foliage to the plummeting Akaka Falls. Its accessibility and grand size make Akaka Falls a popular stop along this eastern coast.

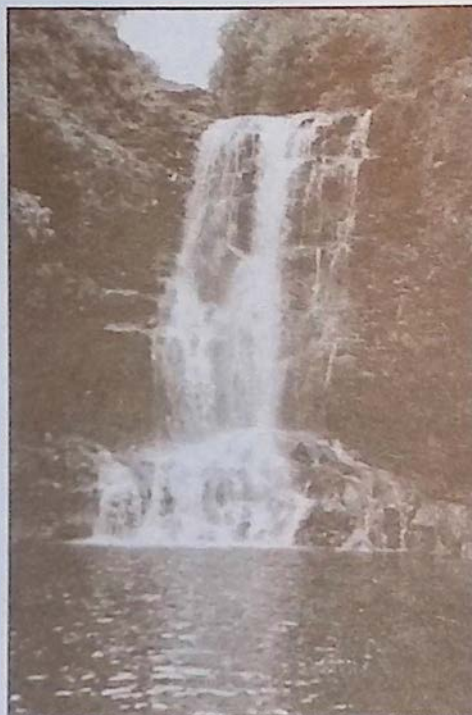
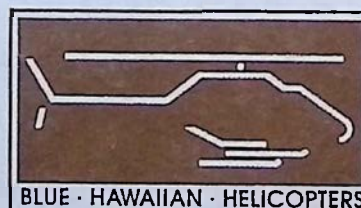


photo by Michael Stewart

We'll take you places
where your feet can't go!



BLUE · HAWAIIAN · HELICOPTERS

ON THE BIG ISLAND:

961-5600

IN MAUI:

1-800-745-BLUE (2583)

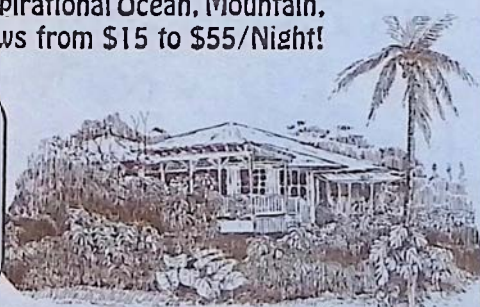
Hale Lamalani

(House of Heavenly Light)

A Hawaiian Hideaway, Vacation Rental & Hostel

Serenely situated with Inspirational Ocean, Mountain, Hilo Bay and Volcano Views from \$15 to \$55/Night! With Breakfast Fixings

Located 5 miles north of Hilo above Botanical Garden and before Akaka Falls at the gateway to Hamakua.



Phone/Fax: (808) 964-5401, Outside Hawaii 1-800-238-8BED
R.R. 1 Box 206, Papaikou, HI 96781

HISTORIC HILO

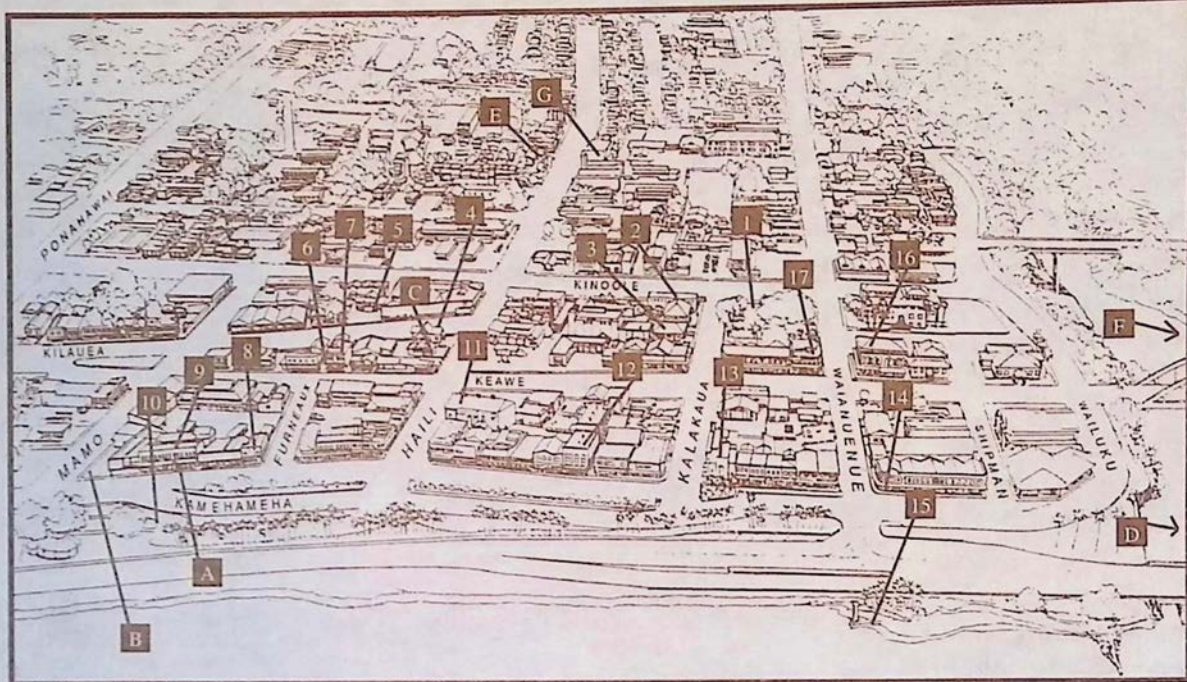
Historical information and map provided by the Downtown Hilo Organization whose interests involve the preservation of Old Hilo, Hawaii.

This self-guided walking tour of historic Downtown Hilo will take about one hour if walked continuously. However, you are encouraged to go at your own pace and spend additional time discovering and exploring that which interests you.

The seventeen stops along the way will provide you with information about the town from 1870 to the present. The history of Hilo begins much earlier, however, with the arrival of the Polynesians in 1100 A.D. They eventually inhabited the shores of Hilo Bay, farmed their crops, fished and traded their goods with each other along the Wailuku River. Changes came to this life-style upon the arrival of missionaries who brought with them new ideas, education and Christianity.

Hilo became a stopping place for explorers curious about the active volcanoes, whaling ships and traders. By the 1900's a number of wharves had been constructed, the breakwater was begun and the railroad connected Hilo with other parts of the island. Hilo became the center of commerce. Two destructive tsunamis, in 1946 and 1960, caused a shift in the location of Hilo's government and commercial life.

Today, historic Downtown Hilo is alive and bustling with renewed energy. New and old businesses alike are meeting the challenge of revitalizing our city center while preserving the historic character which remains very special.



Historic Structures

1. Kalakaua Park
2. Old Police Station
3. Hawaiian Telephone
4. Central Christian Church
5. Taishoji Soto Mission
6. Furneaux Lane
7. Ancient Order of Foresters Building
8. Furneaux Building
9. S. Hata Building
10. Bayfront
11. Palace Theatre
12. S.H. Kress Company Building
13. First Hawaiian Bank Building
14. Koehnen's Building
15. Landing Wharf
16. First Trust Building
17. Pacific Building

Dining, Lodging and Other Sights...

- A. Cafe Pesto (*Pacific Rim Cuisine*)
- B. Hilo Farmer's Market
- C. Andrew Oliver's (*French Cuisine*)
- D. Hale Kai B&B
- E. Haili House Inn
- F. Wild Ginger Inn
- G. Lyman Museum



whether you choose...

WOOD-FIRED PIZZAS, FINE PASTAS
OR
SCRUMPTIOUS DESSERTS
you will always get...

AN ADVENTURE IN TASTE

CAFE

Pesto

HILO BAY

OPEN FOR LUNCH & DINNER
Historic S. Hata Bldg., Hilo Bay, 969-6640
Live Hawaiian Music on Sundays, 6pm - Closing

Hale Kai Bed & Breakfast

Private
Cottage
also available



A 4 Star Bed & Breakfast on the bluff facing the ocean
and overlooking Hilo Bay and Honolii surfing beach

VERY PRIVATE, POOL, JACUZZI, BREAKFAST,
Private Baths, Well Decorated Rooms

111 Honolii Pali, Hilo, HI 96720

(808) 935-6330 Fax 935-8439

Double
occupancy is
\$80 and up

1940's Plantation
style B & B
with jungle
garden &
stream. A
nonsmoking Inn.

*Wild
Ginger
Inn*

\$39 private
bath double
with breakfast.
100 Puueo St.
Hilo, HI 96720
Call 808-935-5556

BED & BREAKFAST

HONOKAA

CURIO

TRADITION

SIMPLICITY

SINCERITY

For years the town of Honokaa sat idle, its home town theater empty, local storefronts ghostly quiet, and streets void of the bustle that once rumbled down Mamane Street during the boom days of the Hamakua Sugar Company, an industry that for the last century has been the life blood of the people in this region. Since the decreasing activity of sugar production over the years and the recent decision this year to halt sugar production all together, the local citizens of Honokaa have redirected their energy and begun one of Hawaii's most spirited movements of rejuvenation. Local merchants have taken the initiative to reopen some of the closed doors in this picturesque town, including the local ice cream parlor, now called **Simply Natural**, outfitted with an old fashioned soda fountain and spinning stools. Other shops such as **Na Pa Aloha**,

The Treasure Shop and the Honokaa Trading Company, as well as many curio shops overflow with Hawaiian memorabilia, local crafts, and wearable arts. Home town cooking flows out of **Mateo's Pizza**, **Jolene's Kau Kau Korner**, and **Mamane Street Bakery** to add to the distinctly local flavor of what pizza parlor owner, Alex Mateo proudly calls,

"The New Honokaa". Included in this new Honokaa is the town's farmers market that has become a weekly event in the downtown area in front of the Historic Botelho Building. The market is open each Saturday of the month.

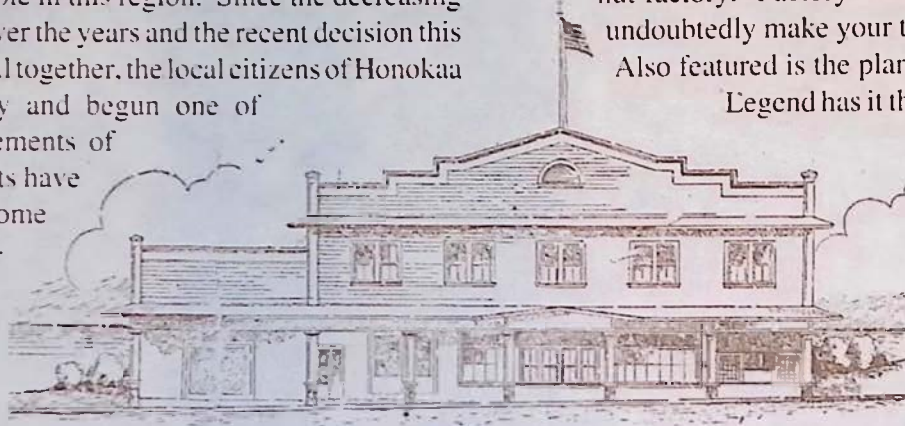
As Hawaii's old theaters are becoming more and more popular the citizens of Honokaa celebrated the reopening of their own **People's Theater**. The doors have officially been opened and evening feature films can be caught every Friday, Saturday and

Sunday evening at Honokaa's historic theater. Also located in Honokaa is the **Hawaiian Macadamia Nut Plantation** which is located down the hill from Kau Kau Korner. The plantation allows visitors the opportunity to view the inner workings of a macadamia nut factory. Factory creations fill the store shelves and will undoubtedly make your taste buds dance when you try them. Also featured is the plantation's own bake shop.

Legend has it that it was in Waipio Valley, "the land of the falling water", the great King Kamehameha, as a young boy, received his leadership training and first learned to surf. Today, family ohanas, "houses", still dot the landscape which is separated by a river that leads into the open sea. Local farmers and their families continue to make their way of

life from farming taro and fishing off the sandy shores of this peaceful and remote valley floor.

Outside of Waipio Valley and Honokaa town are other early and small settlements of the Hamakua region such as Paaui, Kukuiahele and Laupahoehoe all filled with a rich and local culture that happily survives in this region of the Big Island. A couple of popular overnight accommodations in the area are Waipio Wayside Bed & Breakfast Inn and Waipio Valley Artworks vacation rentals. The only bed and breakfast in the area **Waipio Wayside B&B Inn** offers 5 relaxing bedrooms that have been renovated and decorated to preserve the character of old Hawaii. The master bedroom is very private and set back from the house (perfect for a romantic getaway). Enjoy the interaction of a traditional bed and breakfast while relaxing in a historic 1938 planta-



BOTELHO'S GARAGE

Open Daily
in Honokaa



Banana Taro
Pancakes
Fresh Deli
Sandwiches
Old Fashion
Ice Cream Sodas
Soups of the Day
Hilo Homemade
Ice Cream
Even Taro
Ice Cream

See our coupon for a free
old fashion ice cream soda

Now Serving Breakfast

775-0119

**MAMANE
STREET
BAKERY**



Fine Quality
Baking,
Quiches,
Focaccias,
Croissants,
Desserts,
Pastries,
Cookies,
Espresso,
Cappuccino

Wholesale and Retail
Located in
Downtown Honokaa
(808) 775-9478

**Honokaa
Trading Company**

Antiques
Collectibles
New & Used
Goods &
Furniture



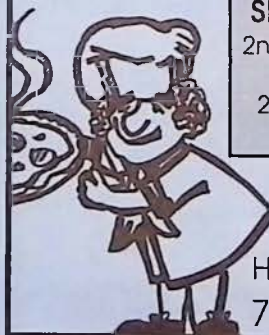
Downtown Honokaa
(808) 775-0808

**Mateo's
PIZZA**

Open Daily at 11 a.m.

Spaghetti
Salads
Veggie Pizza

SPECIALS
2nd Medium
\$7.00
2nd Large
\$9



HONOKAA
775-0944



Located in
Honokaa

Open
Mon - Sat
10 am - 8 pm

Serving the Island's Favorite
Local and American Dishes

What better place to share
a little something with the
community and travelers
from afar.

dine in 775-9498 take out

It's the return of
**HISTORIC
PEOPLE'S THEATER**

Feature Films Now Playing
every Fri., Sat. and Sun.
in Downtown Honokaa

775-0000

**HONOKAA
FARMERS MARKET**
Every Saturday
in Downtown Honokaa

HAMAKUA

SUGAR NUTS WATERFALLS TRANQUILITY

tion home. Swing in the large double hammocks on the expansive deck or watch a sunset from the gazebo. After hiking soak in the old 6 foot bath tub filled with an array of aromatherapy products. At check-in sip one of 20 flavors of tea brought to you by The Republic of Tea. Or experience our amazing Hamakua coast coffee. Your host Jacqueline Horne is an expert on hiking trails and a great source of information on the Island. See add on last page and



EARLY WAIPIO VALLEY VILLAGE PRINT - engraving by Doms, circa 1785.

browse through the Hawaiian Island B&B Association pages. **Waipio Valley Artworks** hosts several vacation rentals with waterfall and valley views and offers guests complimentary gourmet Kona coffee. See their ad below. New doors will continue to open for all of Hamakua as a period of change sweeps through the land with the fall of the sugar empire and the rise of small businesses in Honokaa.

August Honokaa-Hamakua Farmers and Cultural Market "Town Square" Theme

Market held every Saturday beginning at 9:00 AM in front of the historic Botelho Building in downtown Honokaa

Call Hal Hisa Yamato at 775-9239 for more information

Fellow Hamakua people, all Hawaii, visitors, "Mahalo Aloha" means thanks to you with the "Spiritual Love of Aloha" for your support of our Country Market!

We added "Cultural" to our name because we believe that our wonderful varied cultures can give immensely to the enjoyment and quality of community life, through a "Town Square", including our market. The square can consist of

two or three empty lots where there could be an expanded market, outdoor concert stage, cultural park and museum, with a mini play area for shoppers' children. Even the Main Street gulch can be made into a small rainforest reserve, with a wooden bridge. Country village Charm. Honokaa, the capital of the district, can be renewed "light" to everyone! "Let's encourage one another."

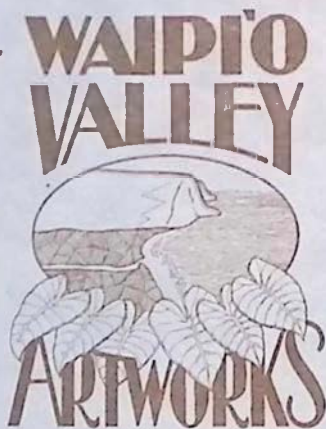
Comments, suggestions, volunteers welcome. Call 775-9239.

Hideaway retreats offering complete privacy and full modern comfort while you enjoy old Hawaii.

Hiking, Unique Shopping, Four Wheel Drive Tours, Surfcasting, Fresh Water Fishing, Horseback Tours, Bird Watching, Surfing

Free Ice Cream Cone if you mention this Ad while making a reservation

Phone: (808) 775-0958
Fax: (808) 775-0551



VACATION RENTALS
DAILY ~ WEEKLY ~ MONTHLY

Fantastic Valley and Waterfall Views, All Units Separate and Private, Accommodations Starting at \$65/Night Double Occupancy, Conveniently Located (halfway between Hilo and Kona), Tastefully Decorated by our Island's Talented Artists, Complimentary Gourmet Kona Coffee

Call TOLL FREE
(mainland, Canada only)
1-800-492-4746

HAWAIIAN MACADAMIA NUT PLANTATION

Factory Tours...and more!

Visit our Factory and Store in Honokaa for delicious macadamia nut creations - from freshly-roasted nuts surrounded by creamy chocolate, to macadamia nuts and coconut combined in a fantastic butter brittle, to the best macadamia nut cookies from "our" bakery...mmmm good.

LOCATED IN HONOKAA TOWN, THE HEART OF HAMAKUA

775-7201

HAMAKUA REGION

1. Kamuela's Mauna Kea View Ph: (808) 885-8425

Popular private Suite and COTTAGE (each with JFireplace, Kitchette, Sun deck, Telephone and color TV) Bordering Parker ranchlands with panoramic views of 14,000 ft. Mauna Kea. Enjoy Hapuna and Island's best white sand beaches, historic Waipio & Pololu Valleys and world class resorts. A Kamuela tradition of hospitality since 1988!

Richard & Deb Mitchell, P.O. Box 6375, Kamuela, HI 96743

2. Sud's Acres 808-776-1611 Ph: (808) 776-1592, 1-800-735-3262

We are located on a macadamia farm at 1800' elevation on the slopes of Mauna Kea with a view of the Hamakua coast. Our 2 bedroom cottage with bath, lvg. rm. is 5 mi. to Honokaa & 20 mi. to Waimea.

P.O. Box 277, Paauilo, HI 96776

3. Waimea Gardens Cottage Ph: (808) 885-4550 800-262-9912

Charming streamside cottage, inspected and rated "Excellent" by the American B&B Assn., has 2 units on 1 1/2 acres in the foothills of the Kohala Mtns. French doors open to private patios; private baths; .2 mi. west of Waimea town; 8 mi. to best beaches. \$100 dbl.; Min. 3 Nts.

Write: P.O. Box 563, Kamuela, HI 96743

4. Waipio Wayside B&B Ph./Fax: (808) 775-0275, 1-800-833-8849

Experience the gracious hospitality of a 1938 sugar plantation home. We cater to those who wish to unwind in a comfortable atmosphere. Choose from 5 unique bedrooms, 2 with full bath, 1 with 1/2 bath. 1 night stay \$70-\$100, multiple nights \$60-\$90 plus tax.

Jackie Horne, P.O. Box 840, Honokaa, HI 96727

HILO REGION

5. Maureen's Bed & Breakfast Ph: (808) 935-9018

The former Saiki mansion, built in 1932, offers a Japanese tea room, koi ponds and botanical gardens. The home is located across from swimming and snorkeling and is convenient to downtown Hilo. Breakfast is generous and includes tropical island fruits.

Please phone for availability.

6. Our Place Papaikou's B&B Ph: 1-800-245-5250, (808) 964-5250

Located 4 miles north of Hilo on Rt. 19. Our 4 bedrooms are in a modern cedar home. Overlooking a stream, tropical vegetation, common lanais lead to the bedrooms, cathedral living room, library, TV, fireplace, grand piano. Full continental breakfast \$50-\$65.

Box 469, Papaikou, HI 96781

KAU REGION

7. Becky's B&B Ph./Fax: (808) 929-9690 or 1-800-235-1233

Rooms affordable \$38 up, with private baths & entrance, full breakfast cable TV. Black or Green sand beaches, swim with turtles, golfing. Or after a long day, just sit in our whirlpool spa & enjoy a lovely evening under the stars. Our town, gives you a feeling for old Hawaii.

Becky & Chuck McLinn, P.O. Box 673, Naalehu, HI 96772

8. Bougainvillea B&B Ph./Fax: (808) 929-7089 1-800-688-1763

Nights & Breakfasts to Remember. In historic "Kau" district between Kona & Hilo. Near green & black sand beaches, South Point & Ocean View. Rooms-pvt. bath, entrance & TV/VCR. - Pool & spa. Hosts Martie & Don Nitsche share secrets of Hawaii. "Your home to our home."

P.O. Box 6045, Ocean View, HI 96704

9. Wood Valley B&B Ph:(808) 928-8212, 1-800-854-6754

Vintage plantation home/farm- in misty uplands above rural sugar town. Near Green & Black sand beaches, ocean view. Unique outdoor bath and steam house, quiet healing environment, homegrown breakfast Hawaiian. Gay Friendly.

P.O. Box 37, Pahala, HI 96777 Fax 808-928-9400

KONA REGION

10. Adrienne's B&B Ph: (808) or 1-800-328-9726 Fax: 808-328-9787

Our cedar home has an unobstructed ocean view from hot tub on our lanai where a healthy breakfast is served. All rooms w/kings or queens, private baths, entrances, TV, VCR & refrigs.. Near beaches and Place of Refuge. Rates \$40-\$70 with families welcome

85-4577 Mamalahoa Hwy. #8E, Capt. Cook, HI 96704

Bed and Breakfasts of THE HAWAII ISLAND B&B ASSOCIATION



Stay in one or more of our unique Bed and Breakfasts located throughout the island. You will enjoy comfortable lodgings at reasonable costs and friendly knowledgeable hosts with inside information on local attractions. We will make your stay memorable and you too will capture the true ALOHA SPIRIT OF THE BIG ISLAND OF HAWAII.

11. Adrienne's Casa Del Sol B&B Ph: (808) 326-2272 / 1-800-395-CASA
Footsteps away from ocean, 5 Rms., with ocean views, pr. baths, lanais, TV. Bkft. buffet served pool/spa side. Watch surfers at Lyman's Pt., whale & fishing boats. Minutes to world class golf, diving, shopping, restaurants & airport. Rates \$80-\$150

77-6335 Alii Dr., Kailua-Kona, HI 96740

12. Da Third House B&B Ph: (808) 328-8410

Enjoy the privacy of this quiet, peaceful studio with private entrance & lanai. Unobstructed ocean view. Relax in hammock amidst lush tropical grounds. Minutes from sandy beaches, best snorkeling. Full continental breakfast, King bed, refrig., micro, TV, VCR, full bath. Rates \$50-\$60

P.O. Box 321, Honaunau, HI 96726

13. Hale Maluhia, Ph: (808) 329-5773, US: 1-800-559-6627,

Up-Country Kona Plantation Living just 3 miles to Kailua-Kona with easy airport access. Big Beds, Pvt. Baths, Spa, Stream, Waterfalls, VCR Lib. Fresh ranch eggs, homemade breads, local fruits & juices. Pure Kona Coffee. Snorkle & Beach Equip. Rooms from \$50, Cottages from \$100, fax 326-5487.

76-770 Hualalai Rd, Kailua-Kona, HI 96740

14. Merryman's B&B Ph: (808) 323-2276 1-800-545-4390

Charming ocean view B&B in Kealahou, minutes from the best snorkeling. Enjoy immaculate, spacious rooms furnished w/antiques & fresh flowers. A delightful Hawaiian breakfast of fresh fruits, chef's special & Kona coffee is served each morning. Snorkel gear & beach supplies provided.

P.O. Box 474, Kealahou, HI 96750

15. Rosy's Rest Ph: (808) 322-REST

For those who love up country old Hawaii and natural beauty. A panoramic view of miles of Kona Coast shoreline. Ohia "TWIG" Bed inspires country cottage look. Private bath, TV, VCR, low rates. Walking distance to Holualoa town. Home of many artists, galleries and shops.

Rosy's Rest, 76-1012 Mamalahoa Hwy., Holualoa, HI 96725

Waipio Wayside B&B Inn*Merryman's B&B**My Island B&B*

16. Three Bears's B&B Ph/fax: (808) 325-7563, 1-800-765-0480
Enjoy spectacular ocean views from our new cedar home nestled amongst tropical fruit trees & flowers. Located above Kona Coast Beach Park, our rooms feature private baths, TV, micro, refrig., coffee maker. A hearty breakfast is served on the lanai. Wir sprechen Deutsch.

Anne Stockel, 72-1001 Puukala, Kailua-Kona, HI 96740

VOLCANO REGION

17. Carson's Volcano Cottage Ph: (808) 967-7683 1-800-845-LAVA
Secluded, peaceful B&B next to Volcano Ntl. Park. Beautiful theme rooms, with botanical garden views. Unique Bromeliad collections. Romantic outdoor jacuzzi. All rooms have private entrances and baths. Some with fireplaces. Rates start at \$65.00 night.

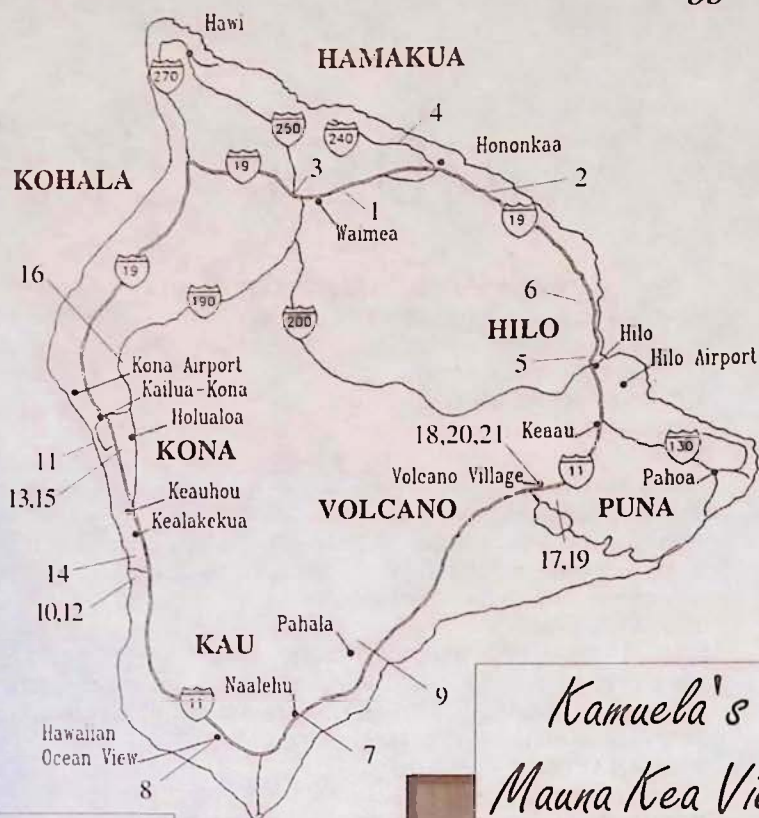
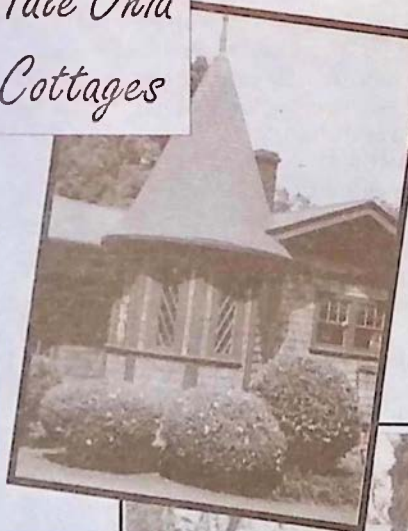
P.O. Box 503, Volcano, HI 96785

18. Chalet Kilauea-The Inn at Volcano Ph: 1-800-937-7786
EXPLORE TREASURES FROM AROUND THE WORLD. Amazing Theme Rooms, Tree House suite (\$75-\$175). Amenities include: jacuzzi, TV, fire-place, library, sunken tub, robes, flowers, chocolates, maid service, afternoon tea and a candlelight 2-course gourmet bkfst. Just outside Volcanoes National Park.

P.O. Box 998, Volcano Village, HI 96785

19. Hale Ohia Cottages Ph: (808) 967-7986, 1-800-455-3803
Noted in the NEW YORK TIMES, the SOPHISTICATED TRAVELER, historic hideaway, unique architecture, garden setting, fireplaces, heated Japanese Furo, breakfast brought to your room. All accommodations have private baths. One mile from Natl. Pk., Rates: \$60 to \$95.

Michael Tuttle, Box 750, Volcano, HI 96785

*Hale Ohia Cottages**Kamuela's Mauna Kea View**Lokahi Lodge*

20. Lokahi Lodge Ph: (808) 985-8647 or 1-800-457-6924
Newest, affordable LUXURY B&B in Volcano. 1 mile to Volcano Ntl. Park, offers accommodations with private baths & entrances to each room. A sumptuous breakfast includes fresh baked homemade bread, juices, fruits, jams, coffee and teas. A haven for those who want to be pampered!

P.O. Box 7, Volcano, HI 96785

21. My Island B&B Ph: (808) 967-7216, 808-967-7110, Fax: 808-967-7719
An 1886 historic missionary home at Kilauea Volcano surrounded by a 5 acre botanical estate. Rooms in main 3 story house with shared or private bath. Couples, singles & families welcome. Full breakfast. \$30 to \$75. All the macnuts you can eat.

Gordon & Joann Morse, P.O. Box 100, Volcano, HI 96785

August On The Big Island

Sundays Every Month - JAZZ - LIVE IN HILO

The Skyliners play music from the Big Band era at D'Angoras in the Hilo Lagoon every Sunday afternoon from 3:30 to 6:30 p.m. 776-1611 for information.

2-5 AUGUST ARTS FOR CHILDREN

ages 10-12. Leading artists provide full days crammed with quality instructions in Volcano Village - ceramics with Chiu Leong, crative movement with Eva Lee, printmaking with Pam Barton, Japanese paste-paper with Ira Ono, children's theater with Jack Boyle and Prana Mandoe, plus lei making and nature studies. Some scholarships are available by writing a letter stating need. Call the Volcano Art Center for fees and information at 967-8222.

3-31 "THE ART OF THE WOODWORKER"

Mark LeBuse, craftsman extraordinaire, well known throughout the islands, shows his work at this special exhibit. Wailoa Center Mini Gallery, Hilo, 933-4360.

5,6 DR. DOLITTLE

Live at the Aloha Theater, see page 20 or call 322-9924.

6 HISTORICAL BOAT TOUR FROM KAILUA BAY TO PUUHONUA O HONAUNAU

Kona Hawaiian Cruises and the Kona Historical Society will be co-sponsoring two historical boat tours from Kailua Bay to Puuhonua o Honaunau this month. The price of the tour is \$15 for members and \$20 for non-members. For further information call the Kona Historical Society at 323-3222.

8-11 AUGUST ARTS FOR CHILDREN

ages 7-9. Leading artists provide full days crammed with quality instructions in Volcano Village - ceramics with Chiu Leong, crative movement with Eva Lee, printmaking with Pam Barton, Japanese paste-paper with Ira Ono, children's theater with Jack Boyle and Prana Mandoe, plus lei making and nature studies. Some scholarships are available by writing a letter stating need. Call the Volcano Art Center for fees and information at 967-8222.

9 AFTER DARK IN THE PARK PRESENTS: "BIOLOGY OF CENTRAL AMERICA'S TROPICAL RAIN FORESTS"

Jim Wetterer, a researcher from the Museum of Comparative Zoology at Harvard University, will present a slide program on the biology of Costa Rican rain forests. Accompany Jim as he takes you on an armchair journey through several rainforests of Costa Rica in search of ant communities and other wildlife. Kilauea Visitor Center Auditorium, 7:00pm, Volcanoes National Park, 967-7184.

10 HISTORICAL JEEP TOUR TO POHUE

This jeep tour is open to island visitors and residents. Pohue in the district of Kau is located on the coast below Hawaiian Ocean View Estates and is known for its archeological sites and hundreds of petroglyphs. For further information call the Kona Historical Society at 323-3222.

11-13 1994 HAWAII ENVIRONMENTAL EDUCATION ASSOCIATION CONFERENCE

"Integrating Hawaii's Cultural And Natural Values in Environmental Education" will be the theme, and the goal, of the 1994 conference. The event will be held at the University of Hawaii in Hilo. For more information call 967-7547 or 967-7184.

13 WEST HAWAII DANCE THEATER DANCE RECITAL

from their Summer program. 8pm, Aloha Theater, 322-9924.

13 MOLLY GILES READING

Award winning fiction author Giles will read from her work at Cooper Center in Volcano Village. Giles was awarded the Flannery O'Connor Award for Short Fiction for her book "Rough Translations". 7:00pm. Call V.A.C. for more information at 967-8222.

13- "BIG ISLAND WOOD SHOW"

Until the 17th of September, the 9th Annual Big Island Wood workers Guild presents the finest in wood carving, wood furniture, and other wood-crafted items. Coordinated by Mike Riley,

Jay Warner, and Keith Ribbentrop. Reception on Saturday, August 13th. Time to be announced. Wailoa Center, Hilo, 933-4360.

14 W.S. MERWIN READING

Renowned poet and translator Merwin whose many awards include a Pulitzer, the Bollinger Prize, and the Hawaii Governor's Award for Literature, will read from his work at Cooper Center in Volcano Village. 7:00 pm. Call V.A.C. at 967-8222 for more info.

16 AFTER DARK IN THE PARK PRESENTS: Wildlife of the Northwestern Hawaiian Islands

Artist and author Patrick Ching will present a slide program on the wildlife of the Northwestern Hawaiian Islands. Ching, who works part time with the U.S. Fish and Wildlife Service, has spent extended periods of time on Hawai'i's remote atolls since 1982. Explore these unique islands with him, and encounter such creatures as sea birds, turtles, monk seals, sharks, and other marine animals. Kilauea Visitor Center Auditorium, 7:00pm, Volcanoes National Park, 967-7184.

19 ARAHAM'S TENT

Live at the Aloha Theater, see page 20 or call 322-9924.

20 HISTORICAL BOAT TOUR FROM KAILUA BAY TO PUUHONUA O HONAUNAU

Kona Hawaiian Cruises and the Kona Historical Society will be co-sponsoring two historical boat tours from Kailua Bay to Puuhonua o Honaunau this month. The price of the tour is \$15 for members and \$20 for non-members. For further information call the Kona Historical Society at 323-3222.

21 GRAND OPENING OF THE NATURE AND CULTURAL CENTER AT NANI MAU GARDENS IN HILO

The opening will be held from 11:00 am to 4:00 pm, with free admission to the gardens as well as the center. In addition to visiting the new center, the public is invited to enjoy music, hula performances, a poi eating contest, Hawaiian games, and craft demonstrations held in the gardens. The nature and cultural center will feature displays of the plants found in the diverse ecosystems, cultures, and agricultural enterprises of the Big Island. Daily demonstrations of Hawaiian crafts that use plants will be offered to visitors of the gardens by Ha'ale I Ka Wai Ehu A Ka Manu. Call 959-3541 for further details.

23 AFTER DARK IN THE PARK PRESENTS: "Construction and Design of Hawaiian Canoes

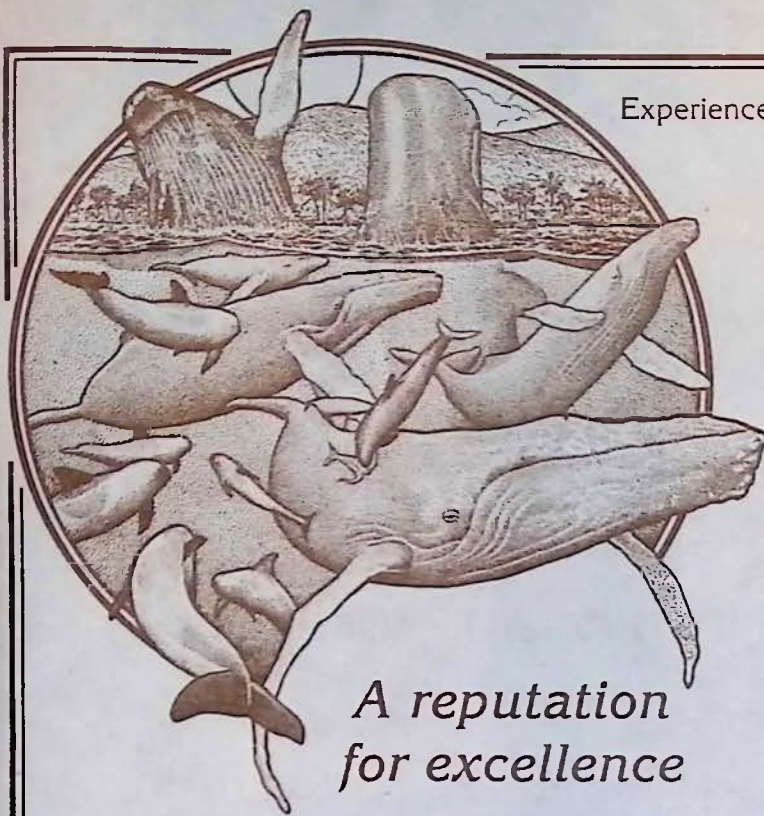
The unique ocean conditions of Hawai'i brought about a diversity of specialized canoe designs. Join Dale Fengerstrom as he shares with us reasons for the adaptations of Hawaiian canoes which make them different from others in Polynesia. The process of canoe building, from the selection of the wood to the finished product, will be illustrated during a slide program. Kilauea Visitor Center Auditorium, 7:00pm, Volcanoes National Park, 967-7184.

27 HO'OLA'A

kicks off Aloha Festival Week with the investiture of royal court at Halemaumau. "One of the purposes of the Aloha Festivals is the perpetuation of Hawaiian culture, traditions, customs and the aloha spirit. There is no better way to see this than in Saturday's Investiture," said Gloriann Akau, Director of Aloha Festivals on the Big Island of Hawaii. The colorful ceremony replicates the ancient costumes, chants and dances which inaugurates a king and his queen into power. During the ceremony, the Mo'i, or king, receives the mahi'ole (helmet) and his Mo'i Wahine (queen) receives the niho palaoa (whale bone necklace) which signifies their authority to rule. The Volcano Art Center Gallery porch has crafts demonstrations of all sorts. There is a first-class hula performance on the pa hula in the afternoon. 12pm to 4pm. Call V.A.C. at 967-8222 for more info.

27 ARAHAM'S TENT

Live at the Aloha Theater, see page 20 or call 322-9924.



*A reputation
for excellence*

3 Hour Daily Cruises
Special Family & Kamaaina Rates

HELP PROTECT THE WHALES.
Proceeds benefit whale conservation.

Experience is the difference between Whale Glimpsing and Whale Watching!

Kona's Only Guaranteed Year-Round *Whale Watch*

With Capt. Dan McSweeney

Experience the whales with a devoted professional researcher/guide who has spent the past 20 years and over 30,000 hours around Hawaii's whales.

Call for information & reservations:

322-0028



KONA CAPPUCCINO RUM SHAKES

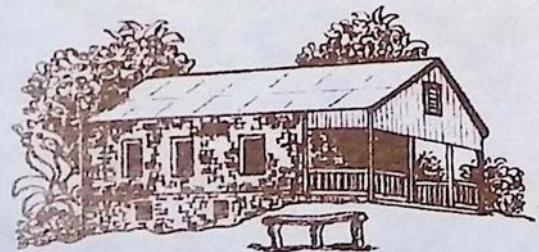
1 pint	softened vanilla ice cream
6 tbsps.	dark rum
1/4 teaspoon	ground cinnamon
1/2 cup	whipped cream
1/2 cup	strong brewed Kona coffee

unsweetened cocoa powder
and cinnamon sticks for garnish

In a blender blend ice cream, rum, and ground cinnamon until smooth but still thick and pour into 2 chilled stemmed glasses. Top drinks with whipped cream and garnish with cocoa powder and cinnamon sticks. Makes 2 drinks.

Kona Historical Society Museum

The Kona Historical Society, a non-profit organization, was founded in 1976 to collect, preserve and disseminate information about the history of the Kona districts on the island of Hawaii. It maintains a growing reference library and archive containing photographs, manuscripts, maps and oral histories as well as a small collection of artifacts.



Historical Photo Exhibits on display every month

Museum Hours

9:00 a.m. - 3:00 p.m. Weekdays

Closed All Holidays

ADMISSION IS \$1.00 (members & children under 12 free)

Located on Highway 11, one-half mile
south of rural Kealahakua.

P.O. Box 398 Captain Cook, HI 96704
TELEPHONE (808) 323-3222

HILO'S 3 BEST AT 15% OFF!!

1. WONDERFUL STAY AT THE HAILI HOUSE

HAWAIIAN STYLE BED & BREAKFAST
IN HISTORIC DOWNTOWN HILO

2. SUPERB DINING AT ANDREW OLIVER'S

HILO'S ONLY 4 STAR RESTAURANT IN A
BEAUTIFUL TURN OF THE CENTURY HOME

3. BEST HELICOPTER TOUR WITH BLUE HAWAIIAN

BREATHTAKING VIEWS & SIGHTS
OF THE BIG ISLAND

MAKE YOUR RESERVATIONS AT THE HAILI HOUSE
AND A GREAT DINNER AND INCREDIBLE TOUR ARE
AVAILABLE TO YOU

CALL THE HAILI HOUSE AT

969-7378

FOR THIS FIRST CLASS GET AWAY!!

Restaurant La Bourgogne

CUISINE FRANCAISE

*"...the classic French cuisine at this
wonderful, intimate place may be the
best in Kona"*

The Zagat Restaurant Survey

Monday-Saturday 5:30 to 10:00 p.m.
3 miles south of Kailua-Kona on Hwy. 11

RESERVATIONS RECOMMENDED

329-6711

Waipio Wayside

Bed & Breakfast Inn

(10 minutes from Waipio Valley)

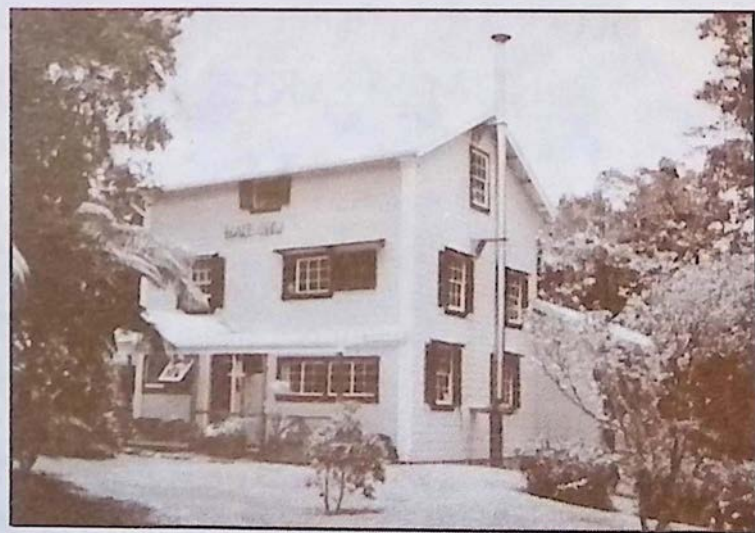


Enjoy a peaceful and relaxing retreat

Help us celebrate our 6th year anniversary
by saving 15% on your next reservation.
You must book directly. Prices range from
\$50 - \$100. Good thru September 1994

775-0275 or 1-800-833-8849

MY ISLAND BED & BREAKFAST AT VOLCANO



Featuring...

- ~All the macadamia nuts you can eat~
- ~A variety of rooms at a range of prices~
- ~We serve a "stuff-yourself" breakfast~
- ~Located on a 5-acre estate full of flower gardens~
- ~Personalized touring information for East Hawaii~
- ~Come spend time in our 108-year old historic house~

967-7216 OR 967-7110

(See our listing in B&B section)