

The Alternative Visitor's Guide

FREE



Coffee Times

July 1994 / Big Island of Hawaii / Volume 2 Edition 4

INSIDE:

Featuring the
Hawaii Island
Bed and Breakfast
Association

LONO

Ki'i carving of the god Lono drawn in 1830 by M. Dumont D'urville and published in Voyage Pittoresque Autor Du Monde. Image identification by Russ Apple, Retired Pacific Historian for the National Park Service.



*Hawaii's
First Landing*

HAWAII ISLAND INDEX OF EVERYTHING

ART GALLERIES

Ackerman Galleries	889-5971	P. 9
Cook's Discoveries	885-3633	P. 12
Cottage Gallery	328-9392	P. 22
Upcountry Connection	885-0623	P. 12
Volcano Art Center	967-8222	P. 16
Wo On Gallery	889-5002	P. 8
Woodcarver's Corner	985-8518	P. 17

COFFEE FARMS

Old Hawaiian Coffee	328-2277	P. 3
---------------------	----------	------

COFFEE RETAILERS AND CAFES

Bad Ass Coffee Co.	1-800-338-7139	322-2646	P. 21
Holuakoa Cafe		322-CAFE	P. 25
Kohala Coffee Mill		889-5577	P. 9
Waimea Coffee & Co.		885-4472	P. 13

DINING

Aloha Cafe (International, Mexican ...)		322-3383	P. 20
Bamboo (Pacific Rim, Thai)		889-5555	P. 8
Cafe Pesto (Pacific Rim Italian)	Kaiwihae 882-1071	Hilo 969-6640	P. 7, 29
Don's Deli (International)		889-5822	P. 9
Edwards at the Terrace (Mediterranean Classics)		322-1434	P. 27
Jolene's Kau Kau Korner (Cafe)		775-9498	P. 30
La Bourgogne (French)		329-6711	P. 36
Luquin's Mexican Restaurant (Mexican)		965-9990	P. 14
Mamane St. Bakery		775-9478	P. 30
Mateo's Pizza		775-0944	P. 30
Nuang Mai (Thai Kitchen)		965-8186	P. 14
Sibu Cafe (Indonesian & Southeast Asian)		329-1112	P. 11
The Godmother (Italian)		965-0055	P. 14
Waipio Artworks Vacation Rentals		775-0958	P. 31
Wakefield Gardens (Home Cooked)		328-9930	P. 23

LODGING

Adrienne's B&B and Casa Del Sol		326-2272	P. 23, 35
Bamboo House		965-9340	P. 14
Becky's B&B		929-9690	P. 4
Carson's Volcano Cottages		967-7683	P. 16
Chalet Kilauea		967-7786	P. 17
Haali House Inn		969-7378	P. 29
Hale Kai B&B		935-6330	P. 29
Hale Kukui		775-7130	P. 35
Hale Maluhia B&B	1-800-559-6627	329-1123	P. 25
Hale Ohia Cottages		967-7986	P. 16
Holualoa Inn		324-1121	P. 27
Ho'onanua		328-9445	P. 22
My Island B&B		967-7216	P. 36
Ohia Gardens	1-800-985-7051		P. 17
Papaya's Plantation		965-7119	P. 14
The Village Inn		965-6444	P. 14
Waipio Valley Art Works Vacation Rentals		775-0958	P. 31
Waipio Wayside	1-800-833-8849	775-0275	P. 36
Wild Ginger Inn		935-5556	P. 29

MUSEUMS

Kona Historical Society	323-3222	P. 35
-------------------------	----------	-------

AIR, LAND AND OCEAN ADVENTURES

Atlantis Submarines (Submarine Adventure)	329-6626	P. 36
Body Glove Snorkeling Cruise (Snorkeling Cruise)	326-7122	P. 3
Chris' Bike Adventures (Bike Tours)	326-4600	P. 8
Kona Kayak (Tours, Rentals, Sales)	326-2922	P. 24
Nautilus Submarine Experience (Underwater Reef Tours)	326-2003	P. 3
West Wind Sailing Charters	325-6471	P. 27

SPECIALTY SHOPS

Antiques	Honokaa Trading Co.	775-0808	P. 30
Clothing	As Hawi Turns	889-5023	P. 7
	Hawaiian Hemp Co.	965-8600	P. 14
	Princess Kaiulani	885-2177	P. 13
Dance Studios	Dameron's Academy of Dance	322-8119	P. 20
General Stores	Aloha Village Store	322-9941	P. 20
	Kohala Health Food	889-0277	P. 8
	Naalehu Fruit Stand	929-9009	P. 4
	Pahoa Natural Groceries	965-8322	P. 14
Hardware	Pahoa Hardware	965-6459	P. 14
Ice Cream	Simply Natural	775-0119	P. 30
	Tropical Dreams	889-0505	P. 9
Gardens	Akatsuka Orchid Garden	967-8234	P. 15
Mac, Nut Factory	Hawaii Mac, Nut Plantation	775-7201	P. 27
Photo Developing	One Hour Moto Photo	329-2080	P. 5
Publications	Ka'u Landing	929-8130	P. 4
Real Estate	A Real Estate Concern	322-6119	P. 21
	Kohala Pacific Realty	889-5181	P. 9
Spa Service	Querencia Spa	328-2569	P. 22

THEATRES

Aloha Performing Arts Center	(see calendar)	322-9924	P. 20
Kilauea Theatre	(see calendar)	967-8222	
Kona Market Place Cinemas		329-4488	P. 3
People's Theater		775-0000	P. 30

COFFEE TIMES

For calendar inserts, historical comments
or

TO RESERVE ADVERTISING SPACE

Call or write the publisher (Les Drent) at:
(808) 326-7637

P.O. BOX 1092 Captain Cook, Hawaii 96704

Contributing Staff:

Guest Feature Writers:	Steve Graves
	Larry Douglas
	Hal Hisa Yamoto
Photography:	Michael Stewart
Production:	Gary De Pontes
	Rosie De Pontes

For Mainland Subscriptions:

Send \$50.00 for a lifetime subscription

Add \$10.00 if outside of USA

Mail to: Up Country Productions

P.O. Box 1092 Captain Cook, HI 96704

Read This ↓

UP COUNTRY is not the manufacturer, or an agent of the manufacturer, for the goods and services being advertised herein and therefore makes NO EXPRESS OR IMPLIED WARRANTY OF ANY KIND WITH RESPECT TO THOSE GOODS AND SERVICES. The publisher will not be responsible for typographical or printing errors, but will reprint without charge that portion of the ad in which the error occurs. Publisher accepts no responsibility for errors resulting from telephone insertions.

Illustrations used herein are for design purposes only and do not necessarily depict the actual items offered by the advertisers.

This publication may not be reproduced in whole or in part without the prior written consent of UP COUNTRY and reserves the right to edit, revise or refuse any advertisement.

Old Hawaiian Coffee

1870's Trees



Specializing only in 100% pure estate grown Kona Coffee

HIGH QUALITY MODERN COFFEE PULPING MILL
COME TOUR OUR HISTORIC
COFFEE FARM

Take a FREE tour of our farm for the real story of how coffee is produced. We are located off Highway 11 in Honaunau, one tenth of a mile south of mile marker 105, just after the mailbox on the mauka side of the road.

"We'll take you from the tree to the roast."

Misha Sperka (farmer/owner)

84-5042 A Mamalahoa Hwy., Captain Cook, HI 96704

CERTIFIED ORGANIC
H.B.G.A.

(808) 328-2277



KONA MARKETPLACE

CINEMAS

Summer Blockbusters Coming Soon...

"The Flintstones" & "Lion King"

FREE 3 HOUR PARKING WITH VALIDATION
at the Kona Marketplace on Alii Drive, Kailua-Kona

showtime info. call 329-4488



NAUTILUS II
SEMI SUBMERSIBLE

HAWAII'S SUBMARINE EXPERIENCE



Enjoy Both Toppide and Underwater Viewing in our Air-Conditioned, 58-Foot, 34-Passenger Coast Guard Approved Vessel. No Age Limit, Day and Night Cruises, Special Group Charters Available

INTRODUCTORY PRICES

ADULTS \$34.95

CHILDREN \$19.95

For reservations call or stop in at our shop. We are located
across from the pier in Kailua-Kona

326-2003

ONE HOUR
MOTOPHOTO™

FREE SET OF PRINTS

with every roll of film developed

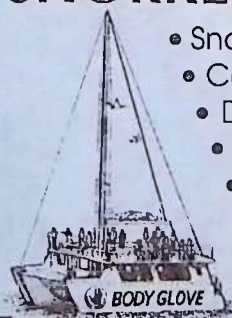
SEE OUR COUPON

329-2080 Kona Inn 322-8091 Keauhou

Located at: Kona Inn Shopping Village (1 hour) on Alii Drive
& at the Keauhou Shopping Village (overnight service)

BODY GLOVE

KONA'S PREMIUM SNORKEL CRUISE
SNORKEL • SCUBA • SNUBA



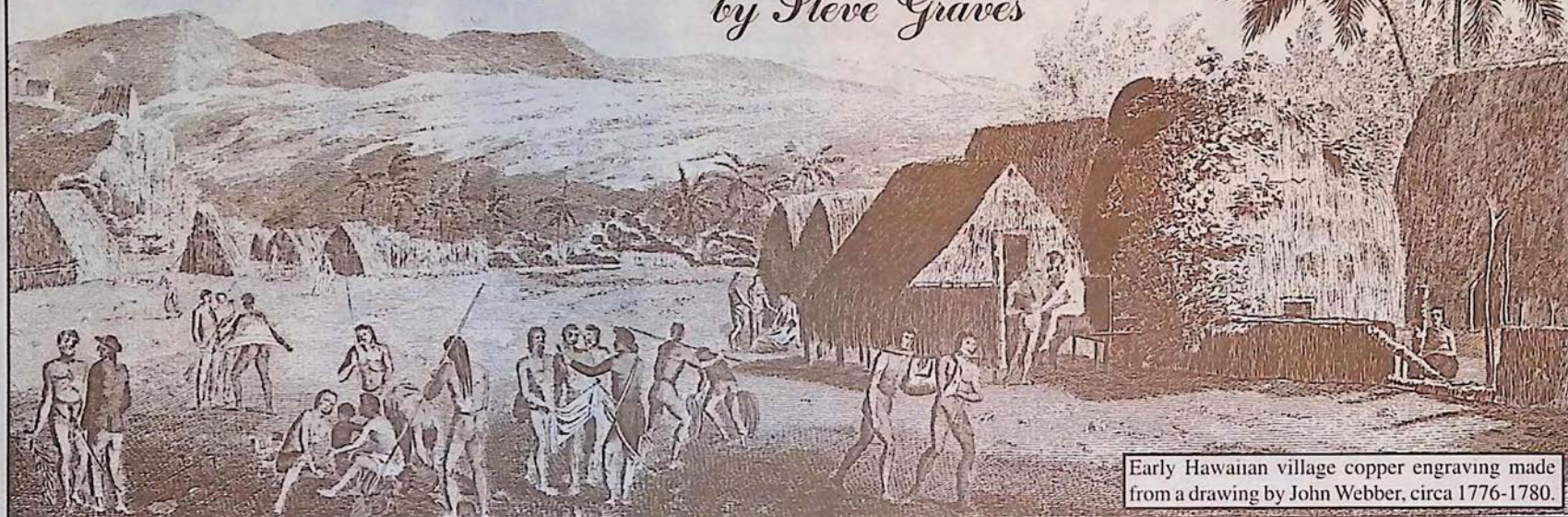
- Snorkel Gear & Instruction
- Continental Breakfast
- Deli Buffet Lunch
- Flotation Water Toys
- Full Service Bar (no host)
- Water Slide



326-7122

Hawaii's First Landing

by Steve Graves



Early Hawaiian village copper engraving made from a drawing by John Webber, circa 1776-1780.

When Europeans discovered the Hawaiian Islands they were puzzled by the presence of the native population. The great question was how they had gotten there. The natives had nothing like the sailing ships of England or Spain. It seemed obvi-

ous to the explorers that the double hulled sailing canoes, then in use by the local population, could not have survived the great distances of open sea that must be crossed to reach this most isolated of archipelagos. With no metal, the natives had no as-

continued on page 11

BECKY'S BED and BREAKFAST

Full Breakfast All You Can Eat
Southern Most Town in USA

Phone or Fax: (808) 929-9690 Off Island: 1-800-235-1233

Rooms Comfortable, affordable, with cable TV, private bath, queen or two double beds. Rates \$38 and up with full breakfast. Children welcome. Close to: Black and Green Sand Beaches. Swim with the Turtles, Golf courses or Volcano Park. Or after a long day on the Island just relax in our Whirlpool Spa and Star gaze. Location is the most southern town in the USA on Hwy. 11.

25% Off
on 4 day stay or longer

From the Southernmost District of Hawai'i Island

KA'U LANDING

(808) 928-6449

P.O. Box 160, Pahala, Hawai'i 96777

In-depth and ongoing coverage of the land, the people and the issues that affect the present and the future of our Big Island Communities.

☐ 1 year (12 issues) \$12 ☐ Sample Copy \$1.50



Southernmost point in U.S.A.

Naalehu Fruit Stand

"A stop in good taste"

Tropical Fruit Breads ~ Cookies ~ Pies ~ Giant Sub Sandwiches ~ Pizzas
~ Garden Burgers ~ Hot Soups ~ Fresh Salads ~ Fresh Juices

It's the perfect rest stop on the way to Volcano!
Sundry and Souvenir items available
Free souvenir with purchase
P.O. Box 31 Naalehu, HI 96722 (808) 929-9009

Try Our Macadamia Nut Pie!



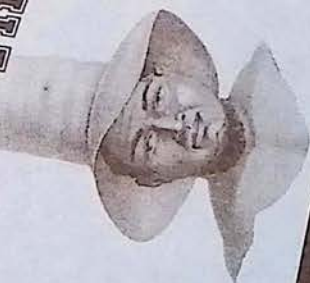
Open Daily at 9 am
on Hwy 11

July 1994

Coming Soon

KONA COFFEE CRUNCH

Coffee Times

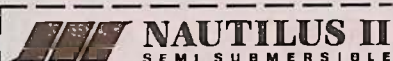


Warning: This candy bar will not be for the faint at heart.

Coffee Times

HAWAII

WELCOME TO THE BIG ISLAND
READ IT, DRINK IT, LIVE IT!



\$5 Off

Underwater Ride with this coupon

see page 3 326-2003 expires 7/31/94

expires 7/31/94



\$5.00 OFF

KAIYAK RENTAL OR TOUR
326-2922

see page 13



expires 7/31/94

for a welcome break in your day

1.00 OFF one pound of coffee or a
FREE cup of our coffee of the day
with this coupon.

885-4472 or 1-800-854-5662

Holuakoa Cafe

Free cup of 100% Kona
Coffee with this coupon

see page 25

322-CAFE expires 7/31/94

located in Holualoa Town

see page 30



expires 7/31/94

FREE ICE CREAM CONE
with purchase of deli
sandwich and this coupon

DON'S Family DELI

Kapaau Town by the King's statue

10% OFF

ALL LUNCH ORDERS
over \$10 with this coupon

expires 7/31/94

889-5822 see page 9

see page 21



expires 7/31/94

Buy 5 Pounds of Kona
Coffee Get 1 **FREE**
at our Kainaliu Roasting Room
with this coupon

see page 3

BODY GLOVE

\$10 OFF ADULT COUPLE FARE



with this
coupon

expires 7/31/94

326-7122



See Page 23



expires 7/31/94

2 for 1 Papaya Boat Special
filled with tuna salad & herb dressing
buy one get one free with this coupon

328-9930

ONE HOUR

MOTO PHOTO

expires 7/31/94

FREE SET OF PRINTS

Receive a second set of prints for
FREE with every roll of film
processed with this coupon

329-2080

see page 5

expires 7/31/94



see page 35

FREE ATLANTIS CAP

With purchase of dive, one cap per
coupon. Departs hourly from King
Kamehameha's Kona Beach Hotel on
Alii Drive in Kailua-Kona. 329-6626



SNORKELING
EQUIPMENT
RENTAL

\$14

With this coupon only. Located at Sunset
Plaza on Alii Drive in Kailua-Kona.

329-3772

expires 7/31/94

"TCBY"

The Country's Best Yogurt

Waimea Center 885-2166
Kona Coast Shopping
Center 329-0151

FREE

Waffle Cone Sundae

when you purchase a waffle cone sundae or
anything of equal or greater value.

expires 7/31/94

Coffee Times

HAWAII

WELCOME TO THE BIG ISLAND

READ IT, DRINK IT, LIVE IT!

see page 21  expires 7/31/94

Buy 5 Pounds of Kona Coffee Get 1 **FREE** at our Kainaliu Roasting Room with this coupon

see page 3 **BODY GLOVE** expires 7/31/94

\$10 OFF ADULT COUPLE FARE with this coupon

326-7122

See Page 23  expires 7/31/94

2 for 1 Papaya Boat Special filled with tuna salad & herb dressing buy one get one free with this coupon

328-9930

ONE HOUR MOTOPHOTO expires 7/31/94

FREE SET OF PRINTS Receive a second set of prints for FREE with every roll of film processed with this coupon

329-2080

expires 7/31/94  see page 35

FREE ATLANTIS CAP With purchase of dive, one cap per coupon. Departs hourly from King Kamehameha's Kona Beach Hotel on Alii Drive in Kailua-Kona. 329-6626

 **SNORKELING EQUIPMENT RENTAL \$14** With this coupon only. Located at Sunset Plaza on Alii Drive in Kailua-Kona. 329-3772 expires 7/31/94


 **NAUTILUS II SEMI SUBMERSIBLE** expires 7/31/94

\$5 Off Underwater Ride with this coupon

see page 3 326-2003 expires 7/31/94

expires 7/31/94  see page 24

\$5.00 OFF KAIYAK RENTAL OR TOUR 326-2922

see page 13  expires 7/31/94

for a welcome break in your day 1.00 OFF one pound of coffee or a FREE cup of our coffee of the day with this coupon. 885-4472 or 1-800-854-5662

Holuakoa Cafe Free cup of 100% Kona Coffee with this coupon

see page 25 322-CAFE expires 7/31/94

located in Holualoa Town

see page 30  expires 7/31/94

FREE ICE CREAM CONE with purchase of deli sandwich and this coupon

DON'S Family DELI Kapaau Town by the King's statue

10% OFF ALL LUNCH ORDERS over \$10 with this coupon

expires 7/31/94 889-5822 see page 9

"TCBY" **FREE** **Waffle Cone Sundae** when you purchase a waffle cone sundae or anything of equal or greater value. expires 7/31/94

The Country's Best Yogurt

Waimea Center 885-2166 Kona Coast Shopping Center 329-0151

Coffee Times

Alternative Lodgings on the Big Island



1. WAIPI'O RIDGE VACATION RENTAL: Secluded retreat-breathhtaking view. Queen Bed - 1 bath - living, dining, kitchen & TV - Roger Lasko P.O. Box 5039, Kukuihaele, HI 96727 (808) 775-0603.

2. HALE KAI: 4 star B & B overlooking beautiful Honolii surfing beach and Hilo Bay. All private baths, cable TV, ocean front views, pool & jacuzzi, full breakfast-quiet area. Guests treated as family. Chosen among top 100 B & B's in USA and Canada. Rates: \$80 to \$98. Call or write Evonne or Paul, 111 Honolii Pali, Hilo, HI 96720. (808) 935-6330 Fax (808) 935-8439

3. HALE LAMALANI: (House of Heavenly Light) A vacation rental and hostel serenely situated 7.5 miles north of Hilo, 1,000 feet up on the Hamakua Coast w/mountain, ocean & bay views. Rates: \$15 to \$50. P.O. Box 430 Papaikou, HI 96781 (808) 964-5401 1-800-238-8BED (mainland).

4. WILD GINGER INN: Nonsmoking Inn with jungle garden & stream room includes Hawaiian breakfast overlooking scenic Hilo Bay. Walk to old Hilo town, shops and restaurants. 100 Puueo St., Hilo, HI 96720. 1-800-882-1887 Mainland or (808) 935-5556 Hawaii

5. CARSON'S KOPOHO COTTAGE: Great snorkeling and unique lava tidal pools, fully equipped 2 bedroom oceanside cottage. P.O. Box 503, Volcano, HI 96785 (808) 967-7683; 1-800-845-LAVA

6. KALANI HONUA: Conference and Retreat Center offering meals, lodging, spa facilities, pool, workshops, classes, cultural programs in a beautiful seaside setting for your personal retreat. RR 2, Box 4500, Pahoa, HI 96778 (808) 965-7828. See calendar listings for current program information.

Friendly North Kohala

Biking Adventures, Art Galleries,
Fine Dining, Cafes, Quaint Shops,
and even a local Ice Cream Factory



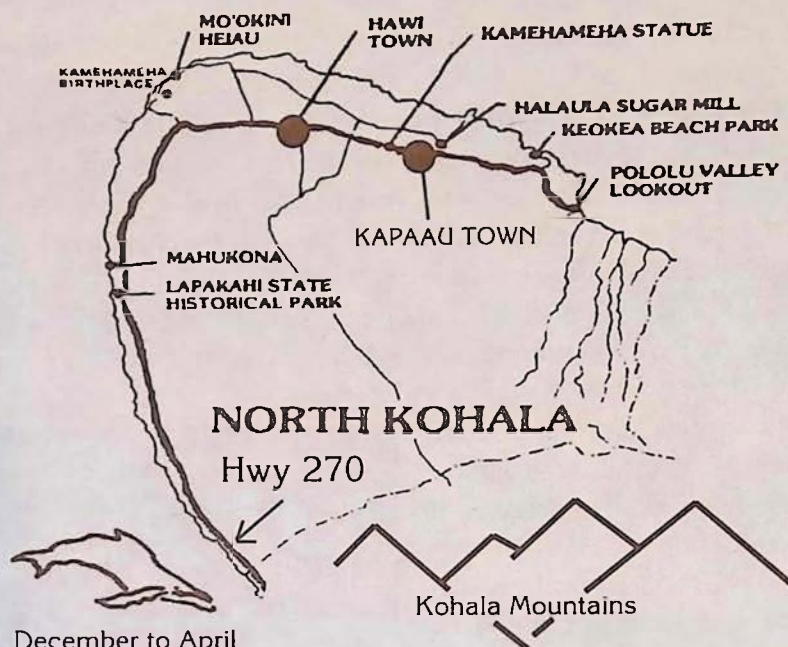
photo by Michael Stewart

Following highway 270 north visitors will encounter a landscape filled with historical landmarks that include the original statue of King Kamehameha, Kalahikiola Church, and Mo'okini Heiau which is regarded as the oldest pre-Western contact temple of worship. In the year 1758 King Kamehameha was believed to be born at Mo'okini.

Also to be found in the North Kohala region are the remnants of a once thriving sugar plantation industry of the 1880's

which is still visible in the many old storefronts of Hawi & Kapaau towns. These towns are now preserved by a new generation of Hawaii business which have their own distinct local offerings. In Hawi Town, a fun romantic & wild boutique called **As Hawi Turns** awaits those visitors seeking new clothing for the Hawaiian life-style and is not for the weak at the knees. The shop also carries handmade crafts by Big Island artists. Across the street is **Kohala Health Food** which carries a hearty selection of herbals, local fruits and various gift items. Massage therapy is also available.

Next to As Hawi Turns is **Kohala Pacific Realty**, where



December to April

visitors are welcome to stop in for free maps of the North Kohala region. On the other side of the street is the newly opened **Bamboo Restaurant**. Inside what was once the grand old Takata Store, built during the booming days of sugar cane, chef Michael Neff combines Pacific Rim dishes with flavors from as far off as Thailand to create his innovative style of cuisine. Farm fresh herbs and a next door bakery contributes a local flare to the food.

Just up the road a piece, smack dab in the middle

continued on page 8



WELCOME to the newest addition to
Big Island Coffee Houses

KOHALA COFFEE MILL

Located in the restored 1932 Toyama
Building in downtown Hawi

Enjoy espresso, cappuccino and a
full line of coffee drinks (all made with 100%
Kona coffee).

Relax, share wisdom, 'talk story'
and feel the pace of old Hawaii in a shop
that is decorated with scenes from early Ha-
waii coffee plantation days.

Also featured are fine pastries,
fresh donuts, coffee accessories and gifts.

Open 7 Days A Week

As Hawi Turns

*Clothing for the
Hawaiian Lifestyle,
Local Crafts*

Located in downtown Hawi
across from Kohala Health
Food and Pumehana Flowers

889-5023



whether you choose...
HAND-TOSSED PIZZAS, FINE PASTAS
OR
SCRUMPTIOUS DESSERTS
you will always get...
AN ADVENTURE IN TASTE

CAFE

Peito

KOHALA COAST

OPEN FOR LUNCH & DINNER
Kawaihae Center, On the Kohala Coast, 882-1071

continued from page 7

of Kapaau Town is Hawaii's own local ice cream factory, **Tropical Dreams**. The owners, Lou and Deby Bleier, feature their fresh fruit sorbets and homemade ice creams and their original macadamia nut and honey butters in a parlor that fills one storefront in old Kapaau town. **FREE TASTES!!!** Across the street from the ice cream factory and also across from the King Kamehameha statue artist Gary Ackerman reflects on the landscape around him through his impressionistic style of painted art on display in **Ackerman Galleries**. Gary's combination of a free liquid style on canvas and varied techniques of painting allows him to successfully blend the colors of the natural environment. Both galleries also feature the works of other local artists.

If the drive up the Kohala coast and gallery hopping has got your appetite going at this point, maybe it's time to visit **Don's Deli** across from the King Kamehameha statue. Let Don prepare a sandwich from his large selection of cold cuts and cheeses or try one of his homemade vegetarian quiches or pastas. Don's Deli is a great place to relax before heading north to Pololu Valley.



The latest addition to downtown Hawi is the **Kohala Coffee Mill**. Owned and operated by Jon and Dixie Adams the historic Toyama building circa 1932 is now the home to a new coffee shop which will serve 100% Kona coffee at its espresso bar.

When you're done in town Hwy. 270 will lead you through North Kohala's fertile pasture lands, dense forests, and ultimately to Pololu Valley, which offers one of the best scenic view lookouts on the island. Along your way to Pololu there is **Wo On Gallery**, three miles past Kapaau town, which now occupies the old Wo On General Store, built by Chinese immigrants around 1920. The gallery hosts the works of only North Kohala artists, its youngest contributor being only 6 years old. Wearable art, sculptures, pottery, woodwork and watercolor paintings by Patrick Rankin can all be found at this local gallery.

If your interests lie in seeing all there is in this region **Chris' Bike Adventures** provides a "bike at your own pace" tour of the Kohala Mountains and its towns. The bike adventure is suited for all levels of riders and is comple-



Your Choice of 3 Biking Adventures: The Kohala Mountain Adventure

This predominantly downhill bike trip, suited to all levels of riders boasts panoramic views of Mauna Kea, Mauna Loa and Maui's Haleakala while you pass through lush pasture lands and quaint North Kohala villages. The trip finishes at a remote beach for lunch after stopping for a view of majestic Pololu Valley.

The Mauna Loa Challenge

This 54 mile 12 hour adventure descends 11,000 ft. to sea level through rugged volcanic terrain, ranchland and dramatic coastal areas. Includes Kohala Mountain Adventure with breakfast and lunch included.

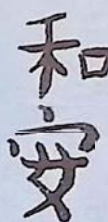
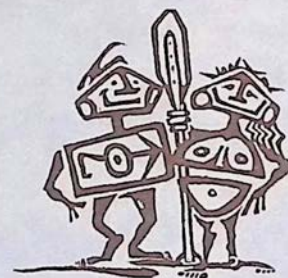
Mauna Kea/Waipio Off Roader!!!

326-4600

Fresh Tastes
"Old Hawaii" Feeling
in Hawi town

bamboo

LUNCH - TUES-SAT
DINNER - FRI & SAT
(808) 889-5555



**Wo On
Gallery**

featuring:
wood, watercolors,
wearable art,
and much more

Devoted to the artists
of North Kohala

and showing work by: Sandra
Gray, Jim Parker, Lesley Patton
and Patrick Rankin

.7 mile past the 25 mile marker
on 270 North
(808) 889-5002



**Kohala Health Food
& Nutrition Center**

OFFERING...
HERBALS, VITAMINS, HEALTH
BOOKS, GIFT ITEMS, JEWELRY,
CANDLES, LOCAL PRODUCE

MASSAGE THERAPY

Open Mon.-Sat.

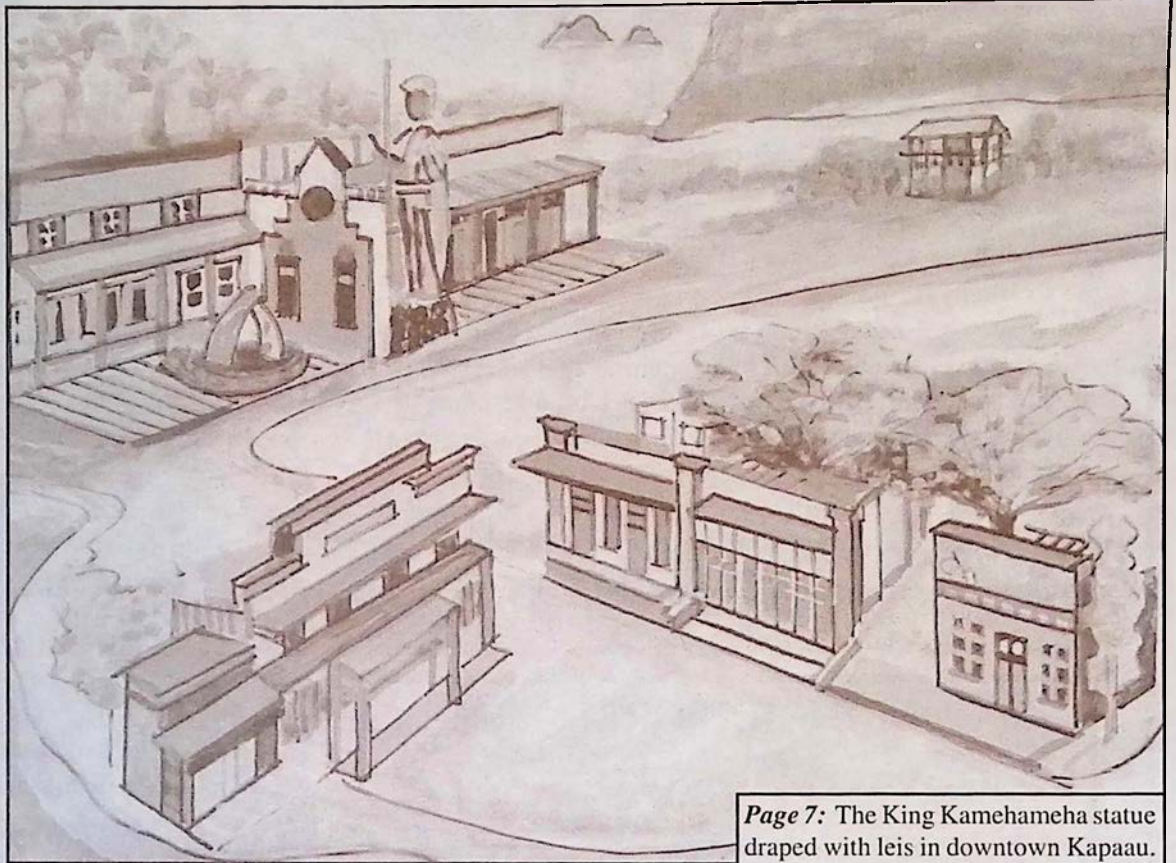
10:30 am- 6:30 pm

Located in Downtown Hawi

889-0277

mented with a breakfast consisting of fresh fruits and baked goodies. A picnic lunch at the beach follows the ride.

While driving along the coastline of North Kohala remember that if the skies are clear, you may be able to catch a view of the island of Maui looming from the other side of the Alenuihaha channel, which separates Maui from the Big Island. Between the months of December and April visitors are almost guaranteed a humpback whale sighting off the coast of North Kohala. This region of the Big Island is a particularly favorite spot for our migrating friends from the north. Perhaps the favorite way to cap off the afternoon in North Kohala is to stop in Kaiwihae and enjoy a Pacific Rim Italian meal at the original Cafe Pesto located in the Kaiwihae Shopping Center near the harbor. The reasonably priced meals are complimented by wonderful pastas, fresh salads and hand-tossed pizzas as well as an original selection of delicious desserts. If you are planning on visiting the town of Hilo Cafe Pesto can also be found in the old S. Hata Building near the bay front.



Page 7: The King Kamehameha statue draped with leis in downtown Kapaau.

Page 8: Kohala Coast Petroglyphs
Above: Impressionistic painting by Big Island artist Gary Ackerman of the North Kohala towns of Hawi and Kapaau.

Come and enjoy this peaceful region of Hawaii. You will see and taste the wonders it has in store for you.

Ackerman
GALLERIES

ORIGINAL WORKS BY
ISLAND ARTISTS
ORIENTAL ANTIQUES
PRIMITIVE ARTIFACTS AND GIFTS

Open daily 9:30 to 5:30 p.m.
Both locations in Kapaau town Hwy. 270 North

(808) 889-5971



Specializing in
North Kohala
LAND & HOMES

Phone (808) 889-5181
Fax (808) 889-5161

Located in the restored Toyama Building
Downtown Hawi

P.O. Box 307 Kapaau, Hawaii 96755

DON'S Family DELI

New...
Fresh Fruit
Smoothies &
Carrot Juice

10% OFF
all lunch orders over \$10
see our coupon

sandwiches, lasagnes, quiches,
pastas and chicken enchiladas
CAPPUCCINO & ICE CREAM

CAFE LOCATED ACROSS FROM KING'S STATUE
MON-FRI 8-6 SAT/SUN 8-5
(808) 889-5822



*Tropical
Dreams*

Homemade Ice Cream
Sorbets & Frozen Yogurt

Used By Top Chefs of the Islands
Windows Cafe

"Every seat has a view"

Come have lunch, but leave room for dessert
889-0505

OPEN DAILY: Mon.-Sat. 11-5 • Sun. 1-5



100% PURE KONATM COFFEE

Hand Picked, Sun Dried and Truly Graded

Did you know that out of the **20 million pounds** of Kona Coffee bought and **consumed** every year under the name Kona only **2 million pounds** of that coffee is actually **grown** here in Kona? And the **frightening fact** of the matter is...that most Kona coffee drinkers around the world have no idea that what they're drinking is a coffee containing 90% of something other than Kona coffee. It's time for this deceptive labeling and misuse of the Kona name to end. In an attempt to preserve the coffee growing heritage



here in Kona and the gourmet reputation of our local coffee and to combat this widespread misrepresentation of the Kona name to sell counterfeit coffee we here at Coffee Times magazine unconditionally guarantee that the coffee you receive from us is farmer direct, contains only 100% Kona coffee and meets the State of Hawaii's highest grading standards. Enjoy the pure taste of the world's finest coffee and help preserve our local farm lands by buying only 100% Kona.

Our Mail Order Coffee Makes The Perfect Gift ~ Hotel Delivery Available ~ We Only Roast To Order!

ORDERING INFORMATION

Type	Roast	Lbs.	Total
_____	_____	_____	\$ _____
_____	_____	_____	\$ _____
_____	_____	_____	\$ _____
_____	_____	_____	\$ _____
_____	_____	_____	\$ _____
_____	_____	_____	\$ _____

Delivery Charges \$ _____

In U.S. please add \$3.50 for 1st pound & \$1.50 for each additional pound (Call for international fees)

Grand Total \$ _____

Please mail with check or money order to:
Coffee Times, P.O. Box 1092, Captain Cook, HI 96704

by American Express Credit Card

Am. Express Card #: _____

Exp. Date: ____/____/____ Name: _____

Signature: _____

Ship To: _____

Please allow up to 1 week for delivery

WE SHIP WORLD WIDE

1-800-750-KONA

In Hawaii Call: (808) 326-7637
P.O. Box 1092, Captain Cook, HI 96704

PEABERRY

The finest flavored coffee bean available (The result of single bean growth in the usual two bean coffee cherry)

16.95/lb. 79.95/5 lb. 149.95/10 lbs.

EXTRA FANCY

The highest quality, high elevation, large bean coffee

15.95/lb. 74.95/5 lbs. 139.95/10 lbs.

FANCY

Excellent quality, smaller bean, high cupping standard

13.95/lb. 64.95/5 lbs. 119.95/10 lbs.

PRIME

The choice bean of most specialty Kona coffee consumers.

10.95/lb. 49.95/5 lbs. 89.95/10 lbs.

FLAVORED KONA COFFEE

Vanilla, Macadamia Nut & Chocolate Macadamia Nut
15.95/lb.

(please specify medium, dark or espresso roast)

Coffee Times



Don't Leave Home Without It

We welcome the
American Express Card

continued from page 4

trolabe or compass for navigation. It seemed impossible that they would be able to find such a tiny speck of land in the great vastness of the Pacific.

Today we know that the Polynesians were the greatest sailors in the world. They sailed enormous distances relying not on special equipment, but the skill of their navigators. These individuals were trained to attune themselves to the world with such sensitivity and acute observation that they were able to know their location upon the ocean as a dweller of the city might recognize the neighborhood around his own block. The points of the compass were known by the positions where certain stars set on the horizon. Cloud formations could tell of islands, as could certain kinds of birds, and certain wave patterns in the sea. The navigator memorized amazing amounts of information to be able to do what he did, but there is little doubt that the method worked.

The actual place where Polynesians landed will always remain a mystery, but it was likely somewhere near the southern tip of the Big Island. This area seems a probable place because their approach would be from the South where all of Polynesia lay. When sailing North, the Big Island would be the first island they would see, and South Point would be the nearest landfall. Aside from the logic of such a choice, there is archaeological evidence supporting the supposition of a landing near Ka Lae, as the Hawaiians call the most southern tip of the island of Hawaii.

Excavation of lava tubes, that were used as shelters, near Kailikii and Waiahukuni, villages four miles Northwest of the Ka Lae, indicate people were using them by A.D. 750. There is other evidence that indicates people first were in the area as early as A.D. 200.

Visitors to South Point may wonder why early Polynesians would settle in such a dry desolate local when it would be so much easier to subsist in one of the verdant valleys on the windward coast. They would be right in thinking that the early Hawaiians

needed well watered lands where they could cultivate their staple food, taro. The idea is correct; what has changed is the climate on the peninsula. South Point was a much wetter place when people first saw it. The desert like climate is a relatively recent change, taking place over the last hundred and fifty years or so.

The English sociologist, William Ellis, in his trip around the island in 1823, saw a very different South Point landscape from what is presently there. Ellis' party headed South from Kailua, and after several stops along the way headed inland at Kailikii, the same village mentioned above. Even though it meant a climb up a three hundred foot cliff, heading inland at Kailikii was the usual practice. Negotiating the point itself was difficult due to strong punishing winds, and dangerous currents. After climbing the cliff from the barren area below, Ellis describes what he saw.

"A beautiful country now appeared before us, and we seemed all at once transported to some happier island, where the devastations attributed to Nahoaarii and Pele had never been known. The rough and desolate tract of lava, with all its distorted forms, was exchanged for the verdant plain, diversified with gently rising hills and sloping dales, ornamented with shrubs, and gay with blooming flowers. We saw however, no stream of water during the whole of the day; but, from the luxuriance of the herbage in every direction, the rains must be frequent, or the dews heavy."

Ten miles to the east, across the point, in the Waiohinu Valley, there was a river which irrigated taro fields. There were wooded areas that nearly reached to the shoreline. When Ellis saw it, the area was productive enough to support a population of several thousand people. Modest rains, the heavy dew which blew down from the snows on Mauna Loa, and a substantial supply of subterranean water adequately met the population's needs.

continued on page 21

*Open Flame sates, classic
Indian style curries & stir-fry*

*Located in the Banyan Court Mall
on Alii Drive in Kailua-Kona*

*"SIBU CAFE serves the best and the
most interesting, moderately priced food
in Kailua-Kona"* *Hawaii Handbook '92*



75-5695 Alii Drive, Kailua-Kona, HI 96740

*Specializing in Indonesian and
Southeast Asian Food Since 1982*

*GARDEN FRESH
VEGETARIAN SPECIALTIES
AVAILABLE
TAKE OUT OR EAT IN*

*Open 11:30-9p.m.
(808) 329-1112*

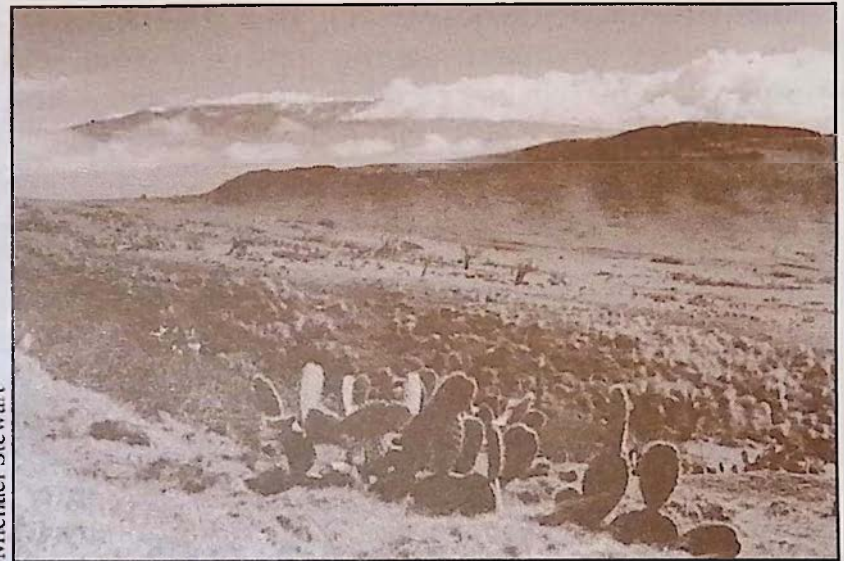
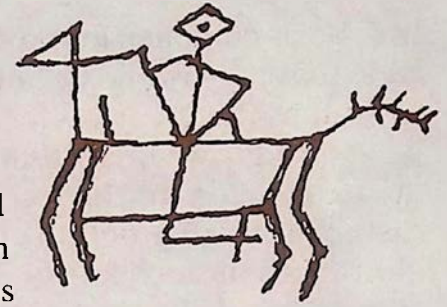
Waimea Country

Between snow capped Mauna Kea and the Kohala mountains the green hillsides of North Kohala roll along under wispy white clouds, and afternoon rainbows frequently stream their way from the skies above Waimea. Inside this landscape herds of grazing cattle can be seen meandering their way through sloping pastures filled with cactus and dry underbrush as Hawaiian cowboys called paniolos still ride horseback and work the ranges.

Ranching began in this region of the Big Island after King Kamehameha appointed, in 1815, a young seaman named John Parker to hunt and shoot the herds of wild cattle whose population had grown uncontrollably since their introduction to Hawaii in 1793. Parker, who accomplished his mission, managed to domesticate a herd of his own before marrying a Hawaiian chiefess. The marriage helped Parker to acquire the land that would later be used to found his 250,000 acre ranch in 1847. Today's existence of Parker Ranch as one of the largest ranches in the United States gives the outsider an idea of the magnitude of its size.

Today, the town of Kamuela, more often referred to

after its district name Waimea, is a town that still surrounds itself with a ranching lifestyle. The brightly colored Victorian houses and shops, tidy yards filled with flowers and skeleton remains



Michael Stewart

Paniolo Country

of wagons and wheels gives visitors the opportunity to see

Waimea continued on page 13



Discover the Best of Hawaii AT COOK'S DISCOVERIES

Open daily 10 a.m. to 6 p.m.

In Historic Spencer House circa 1850 - Waimea Center Next to McDonalds (Hwy 19)

(808) 885-3633

Discover proudly made in Hawai'i treasures including koa, sandalwood, coconut, mango & avocado boxes and bowls. Hawai'ian books and language tapes. Hawaiian music and hula implements. Hawaiian quilts, collectibles and authentic reproductions of ancient palaoa, tapa beaters, fish hooks, squid lures. Island wear by Nike'u, Sig Zane and Island Cowboy. Woven lauhala. Feather, Ni'ihau, wiliwili, kukui and puakenikeni leis. Custom sterling jewelry by former Cartier goldsmith and Mings. Originals and prints by distinguished Island artists including Herb Kane, Harry Wishard, Kathy Long and Doug Po'olua Tolentino. Pure Organic Kona coffee, triple chocolate chunk cookies, fresh Waipi'o poi and poi cake, lemon-macadamia and guava-rum truffles. Even Poi Dog Biscuits! Many goodies under \$15! Remember... Buy Hawaii.



Original Artwork
Bronze Sculpture, Ceramics,
Antiques

**Upcountry
Connection**
Gallery of Art & Antiques

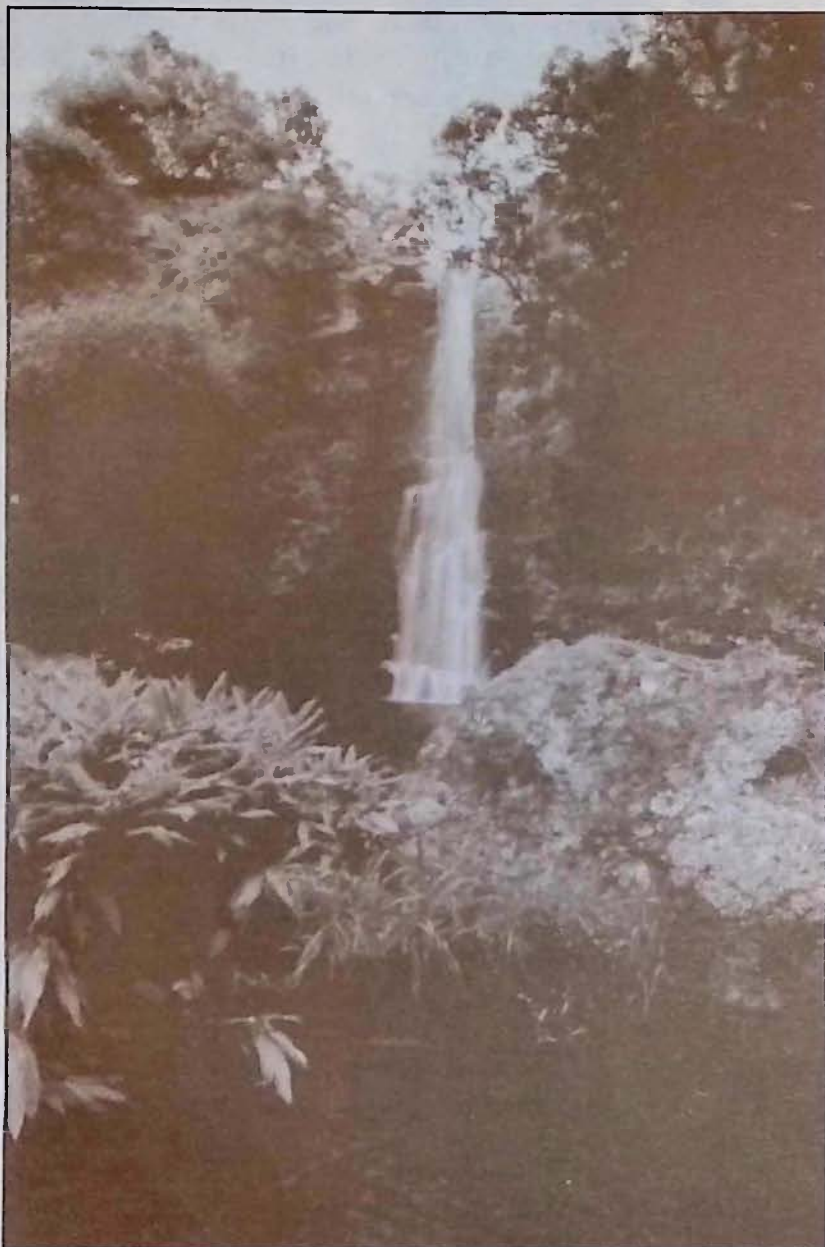
Hand-Beaded Jewelry
Koa Furniture & Accent Pieces
Limited Edition Prints

Celebrating our first year anniversary - Join us!

A Bold, Eclectic Blend of Art Focused on The Big Island

Waimea Center ~ Kamuela, Hawaii ~ Open Mon. - Sat. 10 AM to 6 PM ~ 885-0623

yet another sphere of the diversity of cultures that exist in Hawaii. Beginning a tour of Kamuela with a cup of java and a bite to eat at **The Waimea Coffee and Company** is a great place to start.



Botanical Setting of Waimea's Anna's Pond

WAIMEA COFFEE COMPANY

For a welcome break in your day
offering the best cappuccino, gourmet treats & lunches
100% Pure Estate-Grown Kona Coffees

We mail-order anywhere!
1-800-854-5662 or 885-4472

In Waimea on Hwy 19
(across from Edelweiss Restaurant)

Make sure you don't miss stopping at **Cook's Discoveries** in Historic Spencer House and **Up Country Connection** Gallery of Art & Antiques as well as **Princess Kaiulani Fashions**. All three shops are located in Waimea Center. At Cook's Discoveries the warm aloha of a 150-year-old restored home creates a unique setting for Cook's Discoveries' one-of-a-kind collection of treasures made in Hawaii by Hawaii's proud people. Look for the Hawaiian flags across from Waimea McDonalds. The marushka hand-beaded jewelry is a must see at Up Country Connection, which is often the spot for some of Waimea's most spectacular art showings that feature the works of both local and visting artists. Princess Kaiulani, one of Hawaii's most beautiful Princesses, spent many of her favorite hours in Waimea. Now Princess Kaiulani Fashions in the Waimea Center (two doors from TCBY Yogurt) is a must for the discriminating shopper. Locally made designer muumuus and top national clothing brands provide a choice like no where else on the Big Island. And if women's apparel doesn't suit your fancy right now, see our 24K Hawaiian Gold coin jewelry or our unique gift items. You will also enjoy the antiques, from the turn of the century, that adorn this stylishly different boutique and the feel of beautiful Waimea, an early playground for Hawaii's royalty.



Princess Kaiulani

FASHIONS WAIMEA

A Stylishly Unique Boutique

"We have a large selection of designer muumuus from size 4 to 26. Although the Victorian look of Princess Kaiulani is one of our primary lines, we also carry the bold look of Designs by Puamana and the new Elizabeth Kate Tahitian style muumuu.

Some of the other leading brand names that we carry are Alexander Brown, Zashi, Ann Ferriday, Northern Isles, Phoebe, Crazy Horse, Karen Kane, Back East, Jessica McClintock, Surya, Maggy London and more. Whether it's Ha-

waiian wear, a sweater, lingerie, jeans, a casual outfit or a dress for work, you will enjoy the latest in women's fashion at PRINCESS KAIULANI in Waimea. And when you buy... be prepared for many flattering compliments wherever you wear these clothes."

COME AND VISIT

Princess Kaiulani Fashions

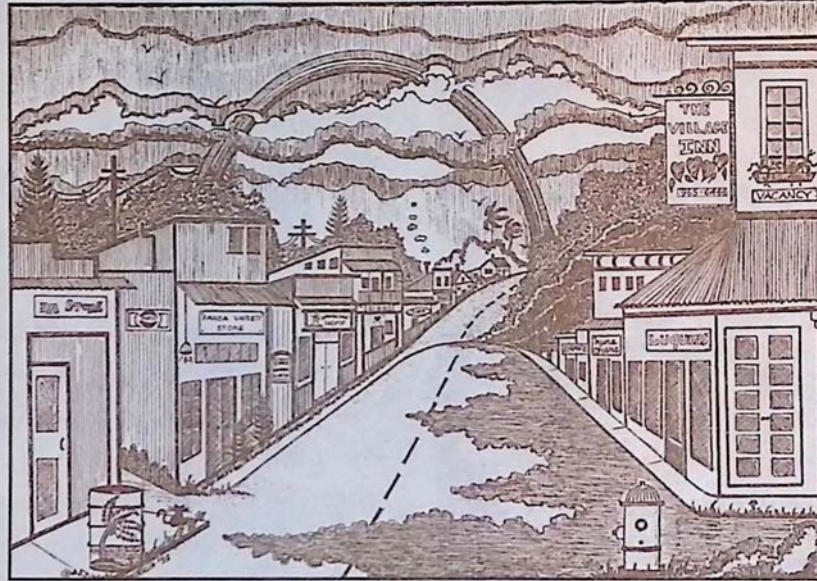
in Waimea Center (near TCBY)

tel. 885-2177 (closed Sundays)

Historic Main St. Pahoa - Puna, Hawaii Quaint Shops, Local Food, Arts, Crafts, Theater

For visitors who want to experience the true feeling of old Hawaii, Pahoa village holds the key to this untouched past. First a rugged sawmill town then a sugar town and later a crossroad on the old railroad, Main Street Pahoa has maintained its western style storefronts and wood boardwalks in a charming turn of the century Victorian style.

Quaint shops from surf, to curio and restaurants span the flavors of the globe from Thailand, to Mexico and Italy and make Pahoa Village one of the most pleasurable and tasteful stops on the Big Island.



Drawing of Historic Downtown Pahoa Village by artist Patricia Borton

Call ahead to any of the friendly shops to see if there are any special events scheduled during your visit. Pahoa has the reputation of holding some lively and entertaining performances both on its Main Street and at the Akebono Theater, Hawaii's oldest theater.

Lodging in Pahoa is an alternative as well. The historic Village Inn, built in 1910, housed some of Puna's earliest travellers and still operates today. The rooms are clean and spacious with vintage victorian decor. The Bamboo House, located above Pahoa Natural Groceries is also available for those visitors looking to spend the night.

The countryside surrounding Pahoa is filled with natural wonders like the Lava Tree State Park, steam vents, groves of papaya trees and black sand beaches along the rugged Puna coast. Visitors are warned however that a prolonged stay in this Aloha time capsule may make leaving a very difficult task.

NATURAL GROCERIES
PAHOA
Organic produce Health Foods
Open 9 - 9 p.m.
Sunday 9 - 6 p.m.

The Godmother 965-0055
Breakfast, Lunch & Dinner
8 a.m. to 11 p.m.
EVERYTHING HOMEMADE
Delicious authentic
New York-style Italian cuisine
Located in historic Pahoa Village

Naung Mai
Thai Kitchen
"We serve Cheng Mai,
Bangkok & Phuket style cuisine."
Vegetarian Entrees offered
Mon. - Fri. 3 - 8:30pm
Sat. & Sun. 12 - 8:30pm
965-8186

THE VILLAGE INN
HISTORIC PAHOA
BUILT IN 1910
P.O. BOX 1987 • PAHOA HAWAII 96778
(808) 965-6444
LODGING & HAWAIIANA
CURIO SHOP
\$39.95 double & up

NATURAL EMPORIUM
PAHOA
Imports, Clothing,
Jewelry, Gifts,
Open 10 am to 6 pm

FOUNDED
1917
AKEBONO THEATER
Local
Performing
Arts Center
Plays, Movies, Live
Music
CALL
(808) 965-9943
or
see *Coffee Times* Calendar
for show schedule.

HAWAIIAN
HEMP COMPANY
PAHOA-HAWAII
HEMP FASHIONS
CLOTHING
FOOD
PAPER
LITERATURE
& ART
(808) 965-8600
Pahoa Village
Send \$2
For our catalog of products
P.O. Box 2056, Pahoa, HI 96778

PAPAYA'S PLANTATION
Elegant, Peaceful Lodgings, \$25.00 per person, 12 acres of Tropical
Wilderness. Expansive Ocean Views. Full Kitchen
Jivan (808) 965-7119 Rosie

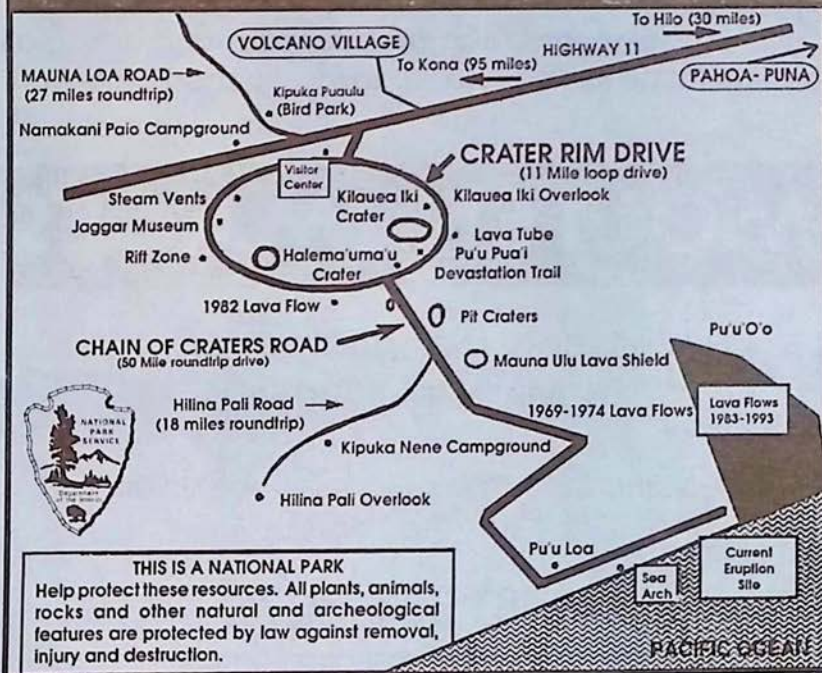
PAHOA HARDWARE
965-6459
OPEN 7 DAYS
CAMPING SUPPLIES
Plumbing, Electric, Nuts, Bolts,
Paint Supplies, Garden & More
P.O. Box 967, Main St.
Pahoa, HI 96778

LUQUIN'S
MEXICAN RESTAURANT
Chili Relleno, Carnitas,
Tamales & Taquitos
FREE CHIPS & SALSA
with Dinner
OPEN DAILY
11 a.m. to 9 p.m.
965-9990

BAMBOO HOUSE
Unique Private Lodging
in Downtown Pahoa
Call
(808) 965-8322
For Information

Volcano Region Information

photo by Michael Stewart



Volcanoes National Park has one entrance, off Route 11, 30 miles south from Hilo or 95 miles east from Kona. The park is open 24 hours a day all year round and requires a \$5.00 entrance fee per vehicle which is valid for 7 consecutive days. The hiker/bicyclist/bus passenger fee for people over 16 and under 62 is \$3.00.

When you enter the park during daytime hours you will receive a park brochure at the entrance station. If you enter the park after hours you may pick up the brochure at the Kilauea Visitor Center which is located a quarter mile from the entrance on Crater

cont. on pg. 16

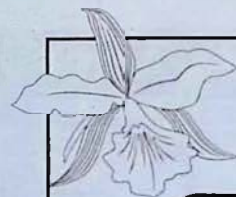
*Twelve Romantic Rooms ~
Fabulous Fireside Dining Nightly 5:30 - 9:00 p.m.*



KILAUEA LODGE

...only minutes from Volcanoes National Park

VOLCANO VILLAGE ~ HAWAII ISLAND ~ (808) 967-7366



Akatsuka Orchid
GARDENS

FREE GARDEN TOUR

Wander in awe through our covered garden of exotic orchids and island plants then help your self to a FREE orchid blossom. We feature Certified Hawaiian orchid plants, cut flowers & anthuriums. Take them home or we'll ship them for you!

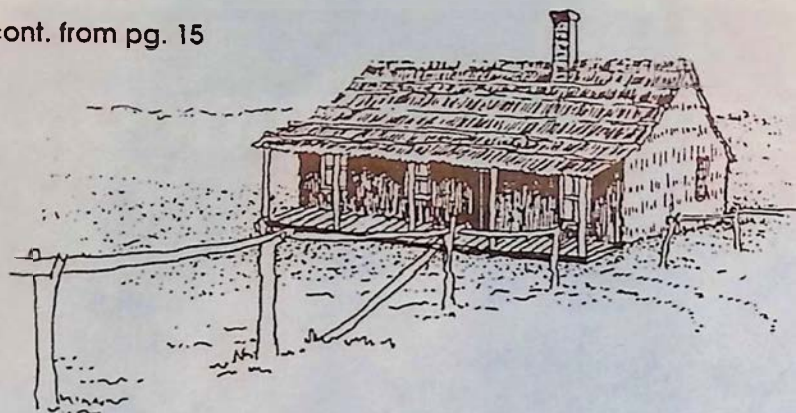
LOCATED ON HWY. 11

22 1/2 MILES FROM HILO

(808) 967-7660

P.O. Box 220, Volcano, HI 96785

cont. from pg. 15



The Original Volcano House,

Now the Volcano Art Center at Volcanoes National Park.

Rim Drive. The visitor center is open from 7:45 a.m. to 5:00 p.m. daily.

Visitors are encouraged to take the time to carefully read the park regulations and guidelines. The volcano fumes that exist in the park may create a health hazard for pregnant women, infants and people with heart or respiratory problems. People at risk should avoid stopping at the Sulphur Banks, Halema'uma'u Crater and other areas where volcanic fumes are present.

Overnight trips in the park require a backcountry permit that can be obtained at no charge at the Kilauea Visitor Center.

Once inside the park enjoy the 25-minute movie on eruptions shown hourly at the visitor's center. Other attractions are The Thomas A. Jaggar Museum three miles inside the park along Crater Rim Drive, The Volcano House, Thurston Lava Tube and scenic vistas. Depending on the timing of your visit you might have a chance to see the volcano erupting. A 45 minute drive to the end of Chain of Craters Road and a short hike will get you to the most recent lava flow area. The new coastline is unstable and can collapse into the sea at anytime without warning. Obey all park signs. Do not enter any closed areas. The park also offers many other hiking opportunities which are mapped out in the park brochure.

Before leaving you won't want to miss The Volcano Art Center, adjacent to the visitor center. The Art Center hosts the works of some of Hawaii's finest artists. The Center is also responsible for many of the art, cultural, environmental, and community activities happening in the park. The dates and times of these activities are listed in the Coffee Times calendar.

A reminder to drive slowly and carefully while touring the park as it will help to protect Hawaii's endangered state bird, the nene.

Lodging, gas, camping supplies and dining all can be found in Volcano Village just a short drive from



**RETREAT...RELAX...RELIVE...
HAWAII**

P.O. Box 758 ~ Volcano, Hawaii'i 96785
808-967-7986 ~ 1-800-455-3803

MOLTEN IMAGES

Professional Island Photography
by Michael T. Stewart

Weddings, Portfolios, On Site Availability,
Fine Art Prints

(808) 334-3270

Aloha Volcano Vacation Rentals

Modest to Luxurious
Accommodations,
Romantic Hideaways
for Two or Homes with
Great Family Value.

(808) 967-7683
1-800-845-LAVA

VOLCANO ART CENTER

Hawaii Volcanoes National Park
Gallery open daily 9 a.m. to 5 p.m.

JULY EXHIBIT: "Mater"
Paintings & Sculpture by Patrick Sarsfield

OLIVER!

Kilauea Theater

Fridays & Saturdays, July 15-30, 7:30 p.m.
Sundays, July 17 & 24 at 4 p.m.

See Coffee Times Calendar for classes and workshops.
Call 967-8222 for reservations and information.

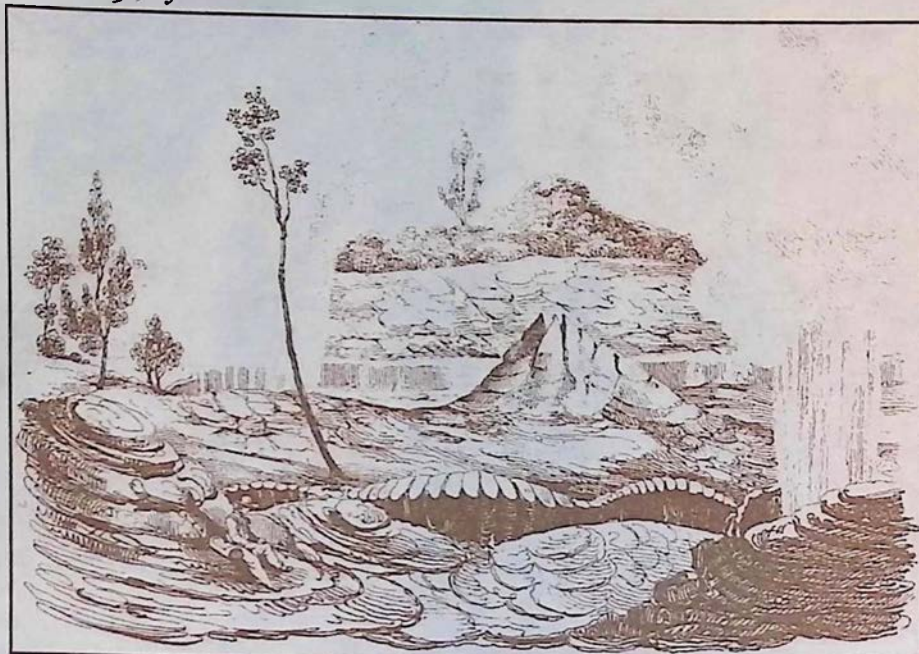
CARSON'S

VOLCANO COTTAGE

Volcano's most private and inviting B&B



Experience The True Fantasy
Of Hawaii ~ Forested Garden
setting ~ Separate Guest
Rooms & Cottages ~ Hot Tub ~
Wood Burning Stove ~
Amenities Without The Price
(808) 967-7683
1-800-845-LAVA



Print of the Volcanoes by M. Dumont D'urville circa 1836
from Voyage Pittoresque Autour Du Monde

the park. When in the village stop by Wood Carver's Corner. This cozy shop is filled with wood arts from around the world including Native American and Hawaiian crafts.

Because of the remote location of the volcano, the numerous Bed & Breakfasts existing in the region are a favorite choice among visitors staying in Volcano. A complete listing of Volcano B & B's can be seen on page 33 of Coffee Times. A few particular favorites are My Island Bed and Breakfast, Carson's Volcano Cottages, Chalet Kilauea and Hale Ohia Cottages. If you are looking for seclusion, Carson's Volcano Cottages are tucked away in the region's rainforest and offers guests the most in privacy as well as a hot tub and even wood burning stoves to keep

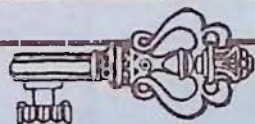
Woodcarver's Corner

Wood Arts, Hawaiian & Native American, Crafts, Golf Trophies, Gifts and more...

Located at corner of Haunani Rd. & Old Volcano Hwy.,
Wed. - Sun. 10-5, (Closed Mon. & Tue.)
Box 867, Volcano, HI 96785, 985-8518



No Booking Fee



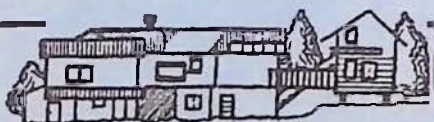
967-7244

Volcano Reservations

SELECT STATE WIDE ACCOMMODATIONS

Bed & Breakfasts ~ Cottages ~ Vacation Homes ~ Condos
Your Key To Hospitality
BUDGET TO LUXURY ~ GREAT VALUE

Chalet Kilauea - The Inn at Volcano



EXPLORE TREASURES FROM AROUND THE WORLD

Unique Theme Rooms ~ TreeHouse Suite ~ Vacation Homes
Jacuzzi ~ Fireplace ~ Library ~ Garden

Gourmet Breakfasts

967-7786

Afternoon Tea

you warm on those cool volcano nights. Chalet Kilauea, The Inn at Volcano, features rooms decorated with art from around the world and even a treehouse suite, a unique alternative for couples looking for that romantic getaway. My Island Bed and Breakfast, located on a five acre botanical estate, is an 1886 missionary home offering guests the choice of rooms in either the main house or garden apartments. Located off of Hwy. 11 are the private Hale Ohia Cottages surrounded by bonsai-style gardens and moss covered grounds. The suites and cottages are both spacious and comfortably outfitted.

Perhaps one of the most memorable dining experiences on the Big Island can be found at Kilauea Lodge, which features continental cuisine beside the historic fireplace of friendship. The mountain lodge also hosts twelve romantic rooms for overnight visitors. One spectacular stop you do not want to miss when you are in the volcano region is Akatsuka Orchid Garden. Seeing is believing when you arrive at this exotic and tropical garden. Visitors are welcome to free tours and complimentary orchids during their visit.

For Park Information Call: (808) 967-7311

For Eruption Update Call: (808) 967-7977

Ohi'a Gardens

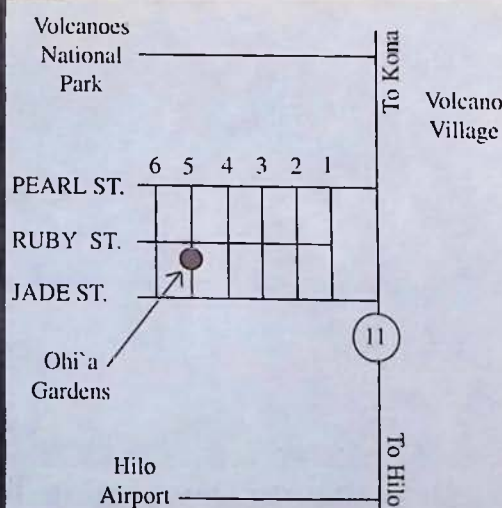
Bed & Breakfast

Your home away from home

Special Rates for Groups or
Golfing Parties.

A Kitchenette and a Barbecue
Grill is available and restaurant
facilities are located close by.

GRAND OPENING
APRIL 1, 1994



RATES:

\$55.00 Dbl. Occupancy
\$40.00 Single
\$10.00 Per Child
\$20.00 Extra Adult

Call or Write for
Reservations
1-800-985-7051

11-3827 Fifth St.
P.O. Box 661
Volcano, Hawaii 96785
Charles Mohica (Mgr.)

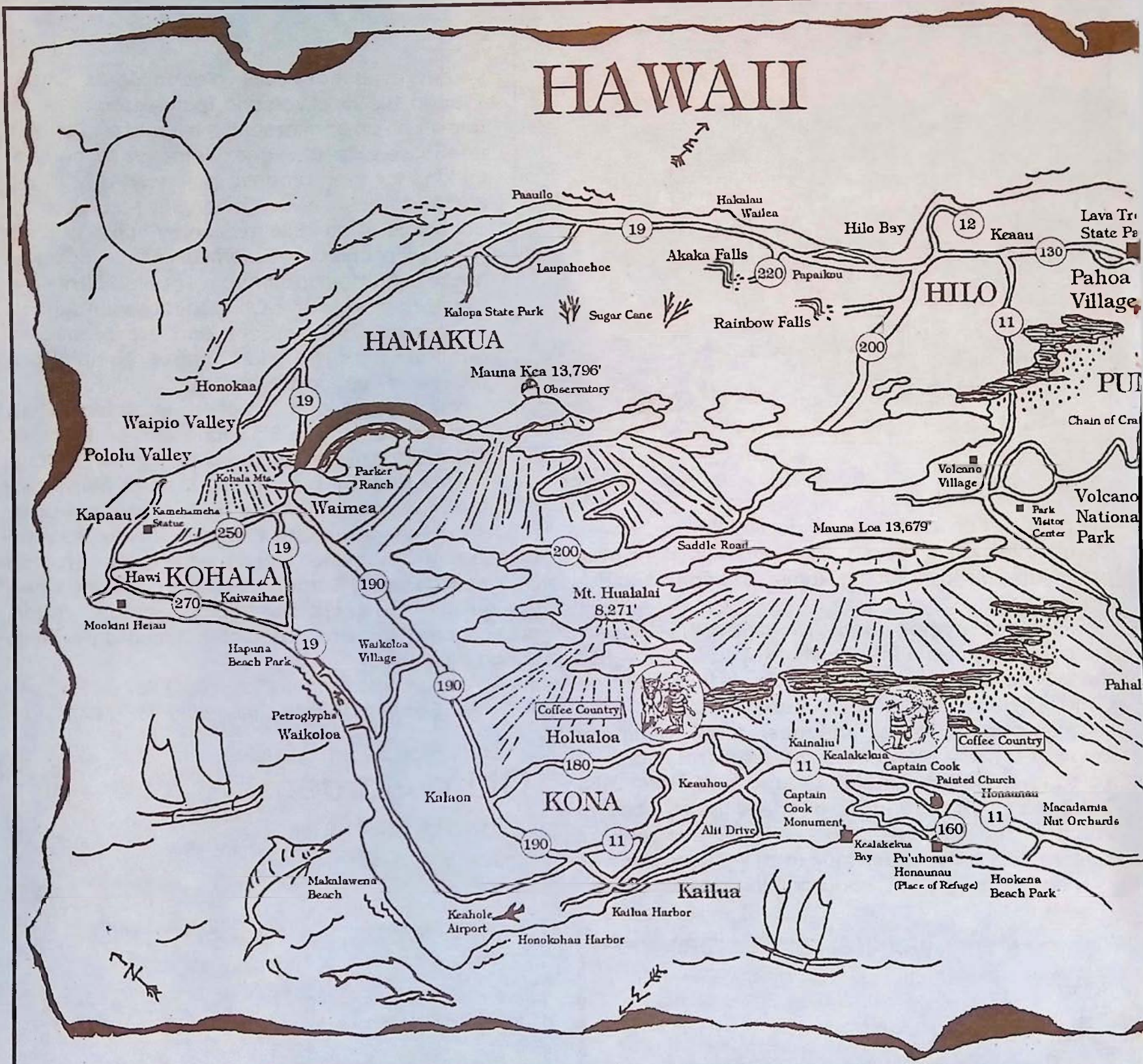


photo by Michael Stewart

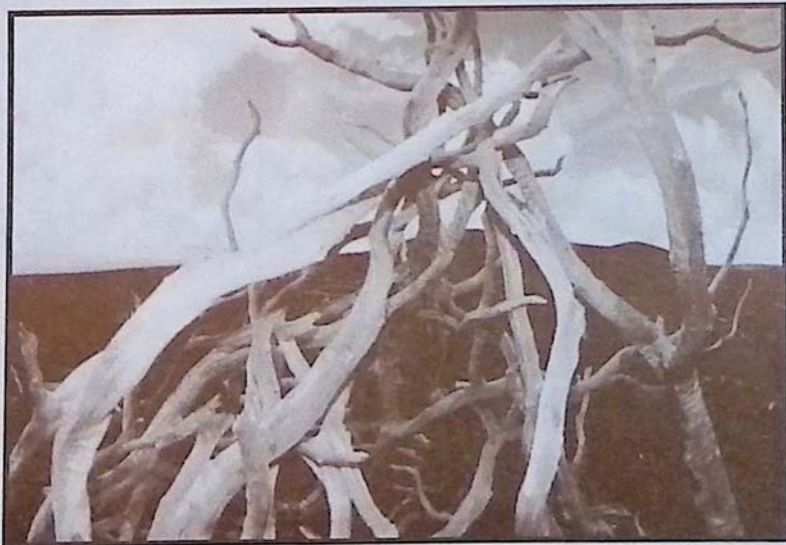
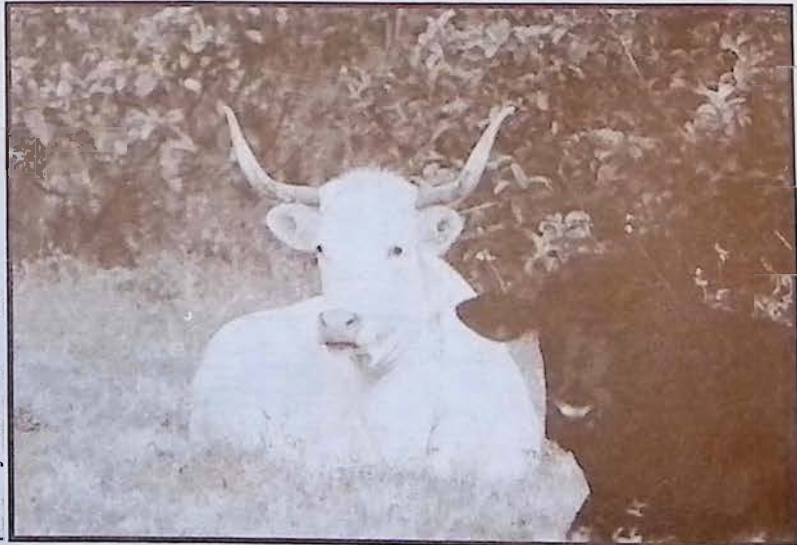


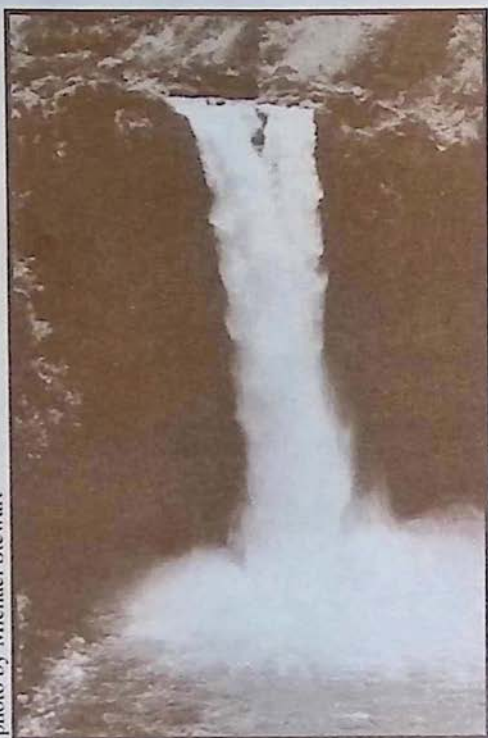
photo by Michael Stewart



Left: Twisted Tree Branches on Devastation Trail in Volcanoes National Park Center: Kohala Mountain



photo by Michael Stewart



East Hawaii Waterfall

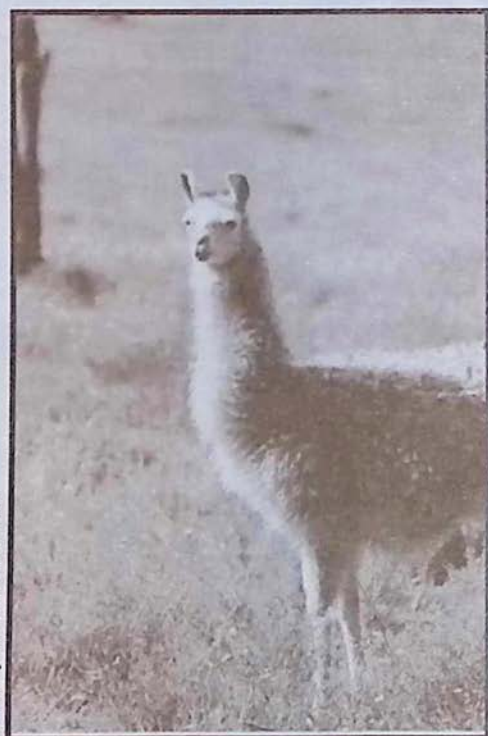


photo by Michael Stewart

Kohala Mountain Llama



photo by Michael Stewart

What To See...



HISTORIC HILO

Early 20th century Hawaii happily lives on in the storefronts and buildings of this yesterday town. Outside the town are magnificent Akaka Falls and Hawaii Tropical Botanical Garden to the north.



VOLCANOES NATIONAL PARK

Home of Pele, the Hawaiian goddess of fire. A region of unique features, volcanoes and a diverse biosphere. See page 6 of Coffee Times for volcano information.



CAPTAIN COOK MONUMENT

The spot in Kealahou Bay where English navigator, Captain James Cook was killed in 1779.



PU'UHONUA O HONAUNAU

An ancient Hawaiian village that is now a national park. Located in south Kona. Stop and see the Painted Church along the way on Hwy 160.



WAIPIO VALLEY LOOKOUT

Spectacular views into a lush valley of waterfalls, rivers and cascading cliffs. (4WD, horse, or a hike are necessary for access into the valley)



WAIMEA COUNTRY

In the heart of Big Island ranch country this western style town sits at the base of Mauna Kea.



AKAKA & RAINBOW FALLS

Two separate waterfalls northwest of Hilo. Easily accessed by car and short enjoyable paved hikes.



HEIAUS & PETROGLYPHS

Both can be found on the Kohala coast. The petroglyphs can be seen by following a path on top of the lava rocks at the Royal Waikoloan Resort.



POLOLU VALLEY LOOKOUT

A northern valley lookout. The road there will take you through friendly N. Kohala towns and perhaps a view of Hawaii's neighboring islands.



PUNA DISTRICT

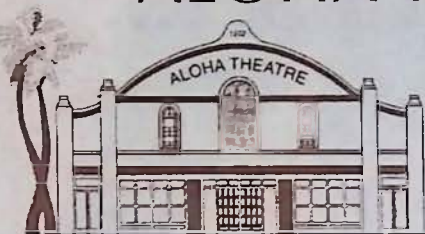
Hosts the rustic western style town of Pahoa in addition to wild roadside orchids, steam vents, Lava Trees State Park and black sand beaches.



SOUTH POINT U.S.A.

The southern most point in the U.S. It boasts a magnificent ocean side drive through rolling green hillsides filled with Holstein cows grazing above a coast line of rugged cliffs and crashing waves.

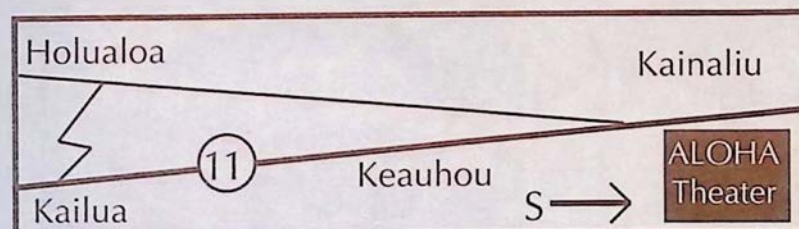
ALOHA THEATER COMPLEX IN KAINALIU



Located just a short drive south on highway 11 from Kailua-Town, central to Kona's coffee country, is the historic

Aloha Theater Complex built in 1932. Local theater performances produced by the Aloha Performing Arts Center and various other local community groups are on stage every month at the complex that also hosts a Cafe, Village Store and Dance Academy. At the cafe visitors can enjoy breakfast, lunch and dinner, which including many vegetarian specialties. A second floor bake shop turns out breads, cakes and cookies that fill the glass case just inside the front door to the theater.

Relax on the outside lanai while you sip a cup of pure Kona coffee, something very few restaurants on the Big Island actually serve. Wander next door to the Village Store and find Hawaiian gifts, fresh fruits and always a local tune playing through the speakers. To round off this Aloha experience, the local Academy of Dance run by Reni Damron is always alive with people of all ages practicing tap, ballet or jazz in the hall located at the north end of the complex.



BALLET
TAP
JAZZ



Damron's
ACADEMY
of DANCE



ALL AGES

(808) 322-8119

P.O. Box 325, Kealahou, HI 96750



8 a.m. to 6 p.m.
Monday - Saturday
8 a.m. to 8 p.m. Fri.
9 a.m. to 4 p.m. Sun.
322-9941

Great gifts for All Occasions

Groceries, organic foods, fruit (fresh & dried)
vitamins, teas, coffees, island music tapes



"DELICIOUS HOMEMADE GOODNESS"

Open for breakfast, lunch & dinner

8 a.m. to 8 p.m. Mon. - Sat

Sunday Brunch 9 a.m. to 2 p.m.

THE BEST BURGERS IN KONA

MEXICAN SPECIALTIES

FRESH BAKED BREADS, CAKES, COOKIES...

ESPRESSO BAR

INTERNATIONAL BEER & WINE SELECTION

IN THE HEART OF KONA COFFEE COUNTRY

322-3383

THE ALOHA PERFORMING ARTS CENTER AND THE ALOHA CHILDREN'S THEATRE PRESENT
HUGH LOFTING'S

DOCTOR DOLITTLE

JULY 22,
23, 24*
29, 30, 31*
AUG. 5, 6



TICKETS

\$10.00 Adults

\$8.00 Children
& Seniors

All evening
performances
at 8:00 pm

*Denotes 4:00 pm matinee

Tickets available at
Skye's Hallmark Shop,
Keauhou Village Book Shop,
The Aloha Village Store and
at the Door.

ALOHA THEATRE

KAINALIU, HAWAII 322-9924

continued from page 11

Since the time when William Ellis looked on South Point there have been numerous droughts and fires which have decimated the population. The great earthquake of 1868, and its accompanying tidal wave denuded the coast of homes. The area has never been reoccupied as it was before European contact.

Today snow does not sit long on Mauna Loa, the rains come rarely, and earthquakes seem to have shut off the supply of water below ground. The sloping plain, once described by Europeans as a great expanse of garden, is dry earth with only a sparse grass for cover. Since the climatic changes seen here have occurred only since the industrial revolution, should we wonder if they are an expression of global warming, or is there some more local mechanism involved? The answer is not yet clear.

Despite the changes the area still has a severe beauty, and many interesting sights. On the West side of South Point, is Heiau o Kalalea, a shrine to the fish god. It is in poor repair, but still an interesting site to explore. As might be expected with such a shrine present, the fishing is excellent. The waters off the point are dangerous, but the fish so plentiful that the Hawaiians frequently fished them.

The cliff near South Point Park, is a common

mooring place for the modern day fishermen who also find these waters a rich resource. From the precipice the drop is about forty feet to the ocean's surface, but the cliff base goes down another thirty feet below the surface of the water. Ladders, hung to make access to the boats easier, swing freely in the air just above the sea. The cliff is deeply undercut.

In the heat of the day the water looks inviting. It is so clear the bottom can be seen plainly. For some there might be a temptation to leap into the cool water, and climb back up the ladder. It looks inviting, but don't do it. A swift current runs along the shore. The flow will carry anyone in the water straight out to sea. It is called the Halaea Current, named for a chief who was carried off to his death.

To fish in the plentiful waters off the point Hawaiians bored holes in the lava at the top of the cliff. They would pass a strong line through the hole to serve as an anchor point, and then reel themselves out in a canoe. Secured to the shore they could fish without worry of being carried away. Many of these holes are still apparent.

Boats moored at the point are launched at a concrete boat ramp about two miles to the East. The

continued on page 27

KEEP KONA COUNTRY

BUY A FARM!!!

ARNOLD RABIN (R) (GRI)
PRINCIPAL BROKER

A REAL ESTATE CONCERN-HAWAII

(808) 322-3677 / FAX: (808) 322-6119
P.O. BOX 766, CAPT. COOK, HI 96704 / (RES) 328-2386

SERVING THE KONA COFFEE

COMMUNITY SINCE 1980

ATTENTION
MACADAMIA NUT
GROWERS

Hawaiian Macadamia Plantations, Inc., located in Honokaa, HI is currently buying macadamia nuts at .70/lb. N.I.S..

Pick up service is available at the Kona Marshalling Yard in (Kealahou) on Tuesdays from 8am to 1pm. Accepting daily at Kohala and Honokaa locations. For more information please call 775-7201.



ROASTED FRESH DAILY

See Our Coupon for a
FREE POUND OF COFFEE

CAFE LOCATIONS:

The Original Bad Ass Coffee Co., 322-9196

Kainaliu Next to Crystal Star Gallery

The Bad Ass Coffee Co., 326-4637

Kailua Waterfront Row on Alii Drive

The Bad Ass Coffee Co. Kailua Warehouse 329-8871

Next to Giuseppe's Italian Cafe on Alii Drive

The Bad Ass Coffee Shack of Kaiwihae 882-7019

Above Cafe Pesto in Kaiwihae Shopping Center

Bad Ass Coffee Shop, 875-8558

1280 S. Kihei, Maui

INDEPENDENT DISTRIBUTORS

Hawaii Mac Nut Plantation Inc., 775-7201 (Honoka'a),

Long's Drugs (In Hilo & Kona)

Keep In Touch, 885-7191 (Parker Ranch Shopping Center)

Uncle Billy's Hilo Bay Hotel, 322-2825 (Hilo)

The Bad Ass Coffee Company

1-800-338-7139 (808) 322-2825

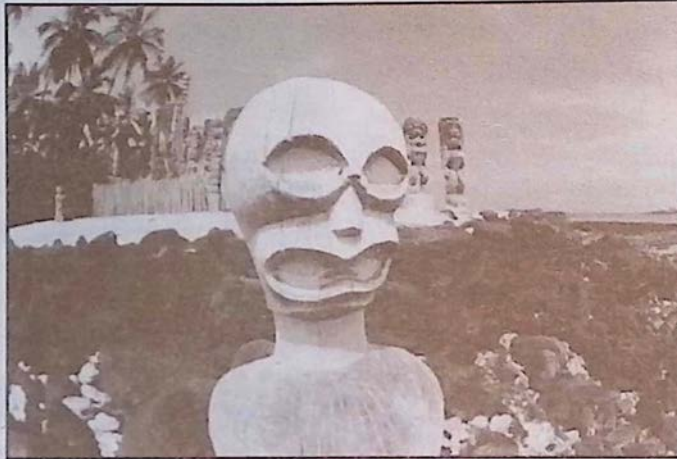
SOUTH KONA

Kona Coffee Farms, Kealahakua Bay, Captain Cook Monument, Pu'uhonua O Honaunau, The Painted Church

There perhaps is no other region on the Big Island shrouded in more history than the district of South Kona. Whether it be the origins of Kona coffee, the ancient Hawaiian village setting of *Pu'uhonua O Honaunau* (Place of Refuge) National Park, or the Painted Church nestled along the hillside overlooking Kealahakua Bay, the spot where the famous English explorer Captain Cook met his fate in 1779, South Kona will keep the historically minded visitor busy weaving their way through its network of mountain roads.

High on the slopes and off Hwy. 160 is The Painted Church, where sometime between 1899 and 1904, Father John Velge, a Catholic missionary from Belgium painted images on the interior walls of the church depicting the biblical scenes of heaven and hell. Near The Painted Church is the rural setting of **Wakefield Gardens Restaurant**. Owner Arlene

Wakefield serves lunch daily at her botanical garden setting in Honaunau. Look for her famous Papaya Boat with tuna salad, it has become a favorite dish among the local population and continues to thrill visiting diners. The restaurant is open for lunch only and includes a free tour of the botanical gardens surrounding the estate.



Tiki Carving at Pu'uhonua O Honaunau National Park in Honaunau.

If your time in South Kona allows for it leave room in your stay for the "Narcissus" at therapist Sheila Pattison's **Querencia Spa**. Her massage treatment includes a jacuzzi, herbal facial, full body massage, beverages, light pupus and a catered gourmet dinner in the Spa's Tea Room. Custom catering is available to meet all your needs.

From the wonders of The Painted Church, Middle Kei road empties out onto Napoopoo Road before passing **Bay View Farms and Mill**, family owned and operated by New

HO'ONANE

*A Unique Experience in Vacation
or Business Travel Accommodations*



"One place you will never forget" Ho'onanea is a private estate overlooking Kealahakua Bay in Captain Cook. Two private apartments each with complete facilities, tile bath, magnificent art and koa furniture by Jerry Benson, and large outside tile lanais overlook the gardens and the ocean. Outside, beauty is everywhere - manicured lawns, flower gardens, ponds, two heated swimming pools with waterfall between, spa, barbecue area, etc.

Truly, there is nothing like it Hawaii. Rates are \$80 daily \$500 weekly, \$1800 monthly until December 15th. (25% higher in winter) Special rates for visiting families of kama'ainas. You are welcome to preview for your next visit.

(808) 328-9445



An artists cooperative located in the headmaster's quarters of an old Japanese schoolhouse in Honaunau, this site offers a glance into older and quieter Hawaii. A wonderful place to view fine, affordable local art.

Find us at SKEA on Hwy. 11 between mile markers 106-105 on the makai (ocean) side of the road.

Cottage Gallery

at SKEA

Paintings

Sculpture

Pottery

Stained Glass

Jewelry

Quilting

Wearable Art

Candles & Woodwork

328-9392

OPEN Tues-Sat 9am-5pm



Featuring:

"The Narcissus"

A Very Special Private Affair

A romantic candlelight massage for couples followed by a catered supper and pupus.

Insurance & Work Comp.
Accepted

mat. 2225 mat. 3053

**Massage, Body Wraps &
Pacs, Injury Therapy,
Jacuzzi & Hydrotherapy**

*Located near the Place of Refuge
in Honaunau*

(808) 328-2569



Querencia Spa Tea Room



Looking north across the South Kona coffee country into Kealahou Bay, circa 1930,
courtesy of Kona Historical Society

Hampshire native Andy Roy and his wife Rosalyn. Over the distant hum of pulping and grading machines the sweet and damp smell of freshly pulped coffee cherry fills the air during the fall and winter coffee season. An extensive system of outlying drying decks and groves of coffee trees cover the landscape in front of the now visible cliffs of Kealahou Bay, which in the hazy distance plummet their way seaward. Bay View Farms will soon be adding a rural coffee cafe to their operation, where guests will have the opportunity to sip 100% pure Kona coffee.

At the bottom of Napoopoo Road is Hikiau Heiau at Kealahou Bay, and a white stone monument across the bay that marks the spot where Captain Cook was killed in 1779. The story behind Cook's death was that it was the result of a failed attempt by Cook and his soldiers to take the high chief Kalaniopu'u hostage in return for a cutter that was stolen the night before. Cook, who had come south to the Hawaiian Islands seeking shelter for the winter months, was in search of a northwest passage to England.

A lower coastal road connects Kealahou Bay to Pu'uho'u O Honaunau (Place of Refuge) National Park. In the early years of Hawaiian civilization it was the Place of Refuge that people who broke *kapu* (sacred laws) would attempt to flee. If the *kapu* breaker could reach this sanctuary his life would be spared. Some of these *kapu* that governed the common people

included not being allowed to walk in the footsteps of the chiefs or to touch their possessions. Other rules forbade commoners from eating foods reserved for offering to the gods, and women were not allowed to eat with the men. The gathering of wood, seasons for fishing and the taking of animals as well as the *hula* were also controlled under the *kapu* system. Other features at the park are *lokos* (ancient fish ponds), *hales* (thatched roof structures that served as homes), *heiaus* and ancient rock walls. Visitors are usually provided with live demonstrations of ancient Hawaiian crafts such as the building of canoes and tikis at the park.

Back out on Hwy. 11 the Cottage Gallery hosts the works of area artists with many affordable pieces being offered as the perfect mementos of your stay in South Kona.

If you are looking for exclusive and private accommodations in this region of South Kona, **Ho'onanea** and **Adrienne's Bed & Breakfast** are prepared to accommodate your lodging needs. Ho'onanea, owned and operated by your hosts David and Mary Randall, allows guests a unique experience in business or vacation accommodations. The home is decorated in koa furniture, includes private baths, and lanais that overlook tropical gardens and spectacular Kealahou Bay. Adrienne's Bed & Breakfast serves continental breakfasts on a lanai that boasts ocean views. Private baths/entrances, hot tub and rooms with king and queen size beds in this custom cedar home rounds off your stay.



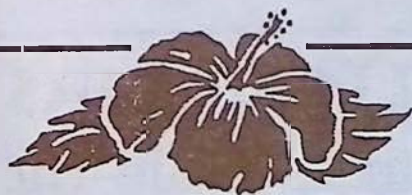
Adrienne's Bed & Breakfast

18 miles south of Kailua-Kona
Country Setting - Ocean View Lanais

Rooms from \$40-\$70, all with private baths + extras
Continental Breakfast Served on Lanai
Covered Hot Tub Area for Sunset Viewing

Call Today: (808) or 1-800-328-9726

Write: 85-4577 Mamalahoa Hwy., #8E,
Captain Cook, HI 96704 or Fax: (808) 328-9787



FREE BOTANICAL GARDEN TOUR

Buy one get one Free Papaya Boat filled
w/Tuna Salad & Herb Dressing!!!
see our coupon

Homemade sandwiches, soups, full vegetarian
fare, Kona Coffee, fresh baked pies
OPEN 11 am to 3 pm (7 days a week)
(808) 328-9930 P.O. Box 18, Honaunau, HI 96726

A TRULY RURAL DINING EXPERIENCE



Located in the heart of coffee country, Hwy. 11 south to
Hwy. 160 (Painted Church & Place of Refuge)

Congratulations To The Gang at Hawaiian Helicopters

In response to June's Puzzle, they identified the location of this B-18 bomber that crashed above Waimanu Valley in the Kohala Mountains. In that issue we dated the crash to have taken place in 1943 but we later learned that the date of the crash was actually February 25th, 1941. The crew survived this crash and it is believed that one member still lives on Oahu today. The plane remains at this location today.

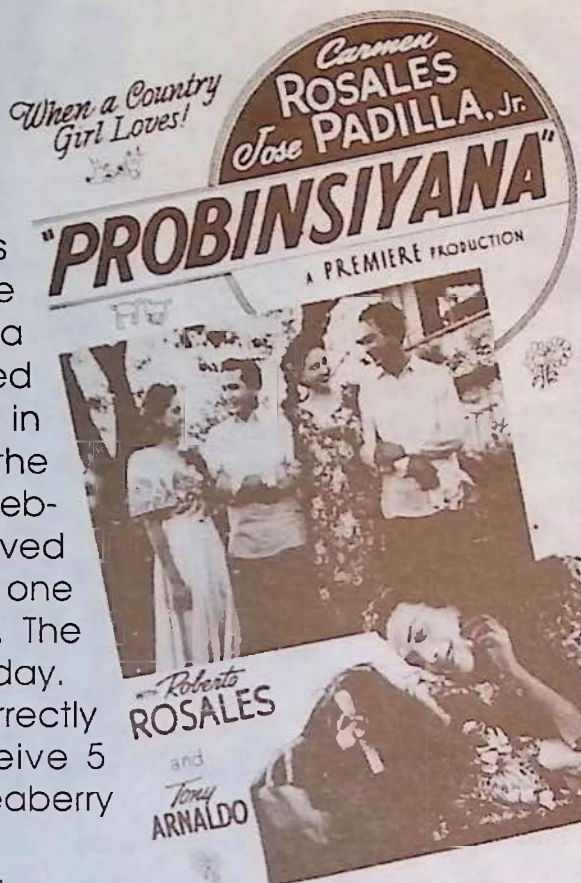
For answering the puzzle correctly Hawaiian Helicopters will receive 5 golden pounds of 100% Kona Peaberry Coffee.



GENTRY'S KONA MARINA,
HONOKOHAU HARBOR,
KAILUA-KONA



SEE OUR COUPON
FOR KAYAK RENTAL



THIS ATTRACTION SHOWING—

SATURDAY	AUG. 12	P---C-	ADULTS 60¢ LOGES 80¢ CHILDREN 20¢
		1:30 and 7:30	
MONDAY	AUG. 14	--O---S	
		7:00 P.M.	
TUESDAY	AUG. 15	-----KU-	
		7:15 P.M.	
THURSDAY	AUG. 17	--O-A--	
		7:30 P.M.	
FRIDAY	AUG. 18	--PA----	
		7:15 P.M.	
MONDAY	AUG. 21	A---A	
		7:30 P.M.	
THURSDAY	AUG. 24	--H--A	
		7:00 P.M.	
FRIDAY	AUG. 25	--AW--	
		7:30 P.M.	
MONDAY	AUG. 28	--K-B---	ADULTS 60¢ CHILDREN 20¢
		7:30 P.M.	

PRICES SAME AS PALACE THEATER

PROGRAM SUBJECT TO CHANGE WITHOUT NOTICE.

During The Hey Day of Hawaiian Sugar...

...local theatres were at the center of entertainment for plantation workers and citizens of the community. The flyer above was a schedule of show times for a Filipino movie picture that was traveling through the Hawaii island theatres sometime in the late 1950's. We have erased all but two letters in each of the theatre names, can you fill in the missing letters to complete the puzzle? If you can, send your answers to Coffee Times, P.O. Box 1092, Captain Cook, HI 96704. (No telephone responses please). We will draw one winner from those of you who correctly answer the puzzle and award him/her with 5 free golden pounds of 100% Kona Peaberry Coffee. Winner will be announced in September issue.

RENTALS/SALES/TOURS

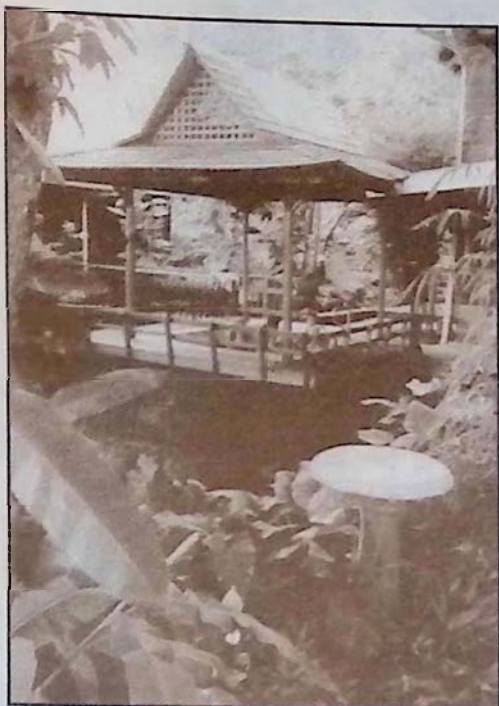
Custom Kayak Tours Around The
Big Island, Day & Overnight Trips
To Remote Island Destinations.

all levels

(2 hour introductions, half or full day trips)

(808) 326-2922

Holualoa, Aloha & Art



Hale Maluhia's Chinese Slate Spa amidst the tropical foliage

Days pass slowly in the artist's retreat town of Holualoa, almost like the gentle mountain breezes which weave their way through the groves of coffee trees lining the slopes of Mt. Hualalai. Steeped in natural beauty and tradition, this little mountainside coffee town blends a touch of today's art with a passion for the simpler life of the past. The village's many private galleries showcase the works of many local artists in a wide array of mediums.

When you are done visiting the galleries, the friendly local espresso bar, **Holuakoa Cafe**, will undoubtedly snatch an hour or two from your day and maybe more if you

decide to indulge in the homemade cake and pastry selection. Every Thursday night the sound of acoustic guitars may be heard in the night air strumming over a chorus of 'gone happy' coffee drinkers packing the cafe for Holualoa's only night time entertainment. (Give cafe owner, Meggi Worbach, a call at 322-CAFE for an up to date scoop on her local entertain-



ment schedule).

If you are looking for a place to spend the night, **Hale' Maluhia** (House of Peace) Bed and Breakfast is located below the village on Hualalai road. This rambling home offers guests a sense of seclusion and a touch of paradise and is outfitted with several lanais, an outdoor spa, kitchen and even office facilities.

Make it a point to wander up for a visit to Holualoa you will love this adorable country town.

Hale' Maluhia Bed & Breakfast

GRACIOUS KONA PLANTATION LIVING UP-COUNTRY COFFEE LAND

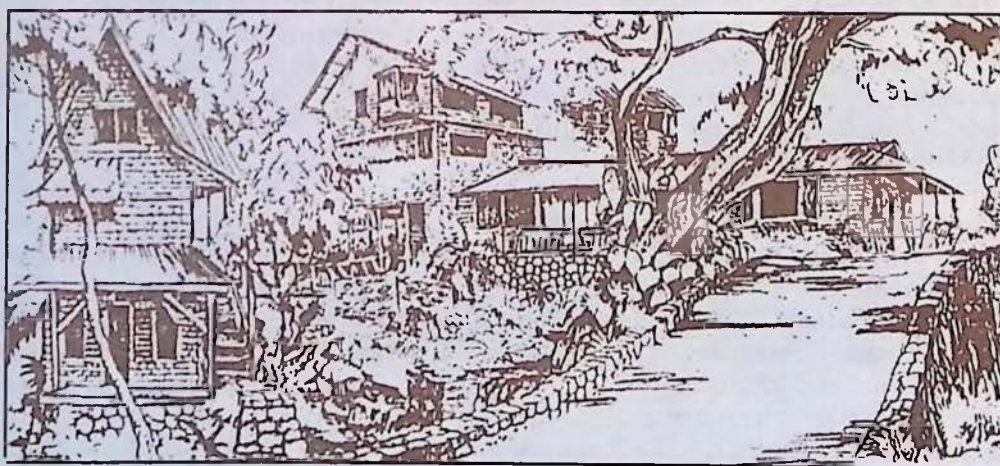
- * Just the right touch of Old Hawai'i.
- * Big rooms/beds and private baths.
- * Chinese Slate & Tile Spa with Jets.
- * 3 miles to Village, Easy Airport Access
- * \$55-\$110 Dbl. with Full Breakfast

For reservations or a FREE brochure write or call:

76-770 Hualalai Rd. Kailua-Kona, HI 96740

Toll Free 800-559-6627, (808) 329-5773,

Fax (808) 326-5487



Holuakoa Cafe

Espresso Bar

SUMMER HOURS will be: MON - FRI 6:30am - 5pm

Closed Saturday & Sunday.

322-CAFE



Please come in...
meet Elfie & Manfred, who
will be serving our delicious
coffee drinks while I'm
away on holiday.

Love,

Meggi

PS. I appreciate your continued support.

Big Island Restaurant Review

HILO

CAFE PESTO: (pg. 29) Cafe Pesto has extended its service to the historic S. Hata Building in downtown Hilo. While the cuisine remains similar to what is offered at the original Kawaihae location diners can experience the tastes of wood fired pizzas and local dishes such as fresh fish and lomi lomi served on a bed of noodles. Organic produce and edible flowers complement the reasonably priced food which is always "an adventure in taste".

KOHALA

BAMBOO RESTAURANT & GALLERY: (pg. 8) At Bamboo you will find warm "Old Hawaii", featuring fine Hawaiian Regional Cuisine and "Local Style" food. Located in a fully restored historic building, Bamboo is a tropical restaurant, with "the best atmosphere on the island!" Here, local people gather in the deep old wicker chairs for passion fruit margaritas, Hawaiian entertainment, and Sunday Brunch. Try to catch one of their "theme nights" for a truly special evening. Browse and find a gift in the Kohala Koa Gallery of fine art and Pacific handcrafts. Open for Lunch & Dinner: Tuesday- Saturday till 9:30pm. Sunday brunch, 9-2:30pm. Closed Mondays.

CAFE PESTO: (pg. 7) Cafe Pesto has earned a reputation as an innovator of provocative island cuisine specializing in Pacific rim pizzas, pastas, salads and seafood served in a setting of casual elegance. the menu draws upon fresh organic produce from Puna and edible flowers and herbs from Hualalai and Volcano. With locations in downtown Hilo and south Kohala's Kawaihae, Cafe Pesto is reasonably priced and always, "an adventure in taste".

DON'S FAMILY DELI: (pg. 9) Just 6 miles before the end of the road there is an oasis of food and drink. A variety of meats, cheeses and breads. That's what makes it a deli. Also bagels, cream cheese, and lox and cappuccino make it a good place to sit and talk. Our garden room faces the King's statue across the road. To round out the menu we cater to vegetarians with quiche, enchiladas and lasagnes. We always have two soups, fresh carrot juice and our famous fruit smoothies and remember that everything travels well; to the end of the road at Pololu Valley lookout and the beach parks near by. Deserts, salads and dip ice cream also. Plenty of parking and always a refreshing breeze.

WAIMEA COFFEE AND COMPANY: (pg. 11) Located on Hwy. 19 as you drive through beautiful upcountry Waimea. Sample the finest world-class coffees, cappuccino and gourmet treats at this friendly oasis. David Ellis and his cheerful staff will make you feel at home at this cozy country cafe- a great place to stop for lunch or for a welcome break in your day. Enjoy a variety of estate-grown pure Kona coffee as well as gourmet coffees from around the world, and take advantage of their easy mail order service to send coffee home. A perfect way to savor the relaxed pace and quality lifestyle of this beautiful area.

KONA

ALOHA CAFE: (pg. 20) The Aloha Cafe is located in colorful Kailua. Open for breakfast, lunch and dinner, the cafe boasts a sunny garden lanai overlooking rolling meadows and shining ocean. Quality & freshness best describe the food. Fresh squeezed orange or carrot juice and fruit smoothies quench any thirst. With an emphasis on vegetarian meals, our fish and pasta specials are complemented by an extensive wine & beer selection. From homemade soup to Mexican entrees to delicious cakes and cookies from our own bakery, the food is fulfilling and reasonably priced. Finished off with our 100% Kona coffee or espresso treats, the Aloha Cafe is a satisfying dining experience. Remember our Sunday brunch from 9am to 2pm.

EDWARD'S AT THE TERRACE: (pg. 27) Edward's at the Terrace is Kona's only ocean front restaurant featuring the cuisine of the Mediterranean region of Europe. Edward's is located on the grounds of the Kanaloa Condominiums in Keauhou, and is open for breakfast, lunch and dinner from Tuesday thru Sunday. Let the soft crash of the waves sooth your mind as you dine on such things as couscous grilled shrimp and babaganous, or robust fisherman's soup served under a puff pastry crust. For lunch you may select an old familiar favorite such as salade nicoise topped with fresh grilled tuna or one of the best burgers you'll have anywhere. Breakfast offers such treats as apple spice sausage patties and a family special of eggs and bacon.

LA BOURGOGNE FRENCH RESTAURANT: (pg. 36) Located just 3 miles south of Kailua-Kona this small, intimate restaurant makes you think you might be at a delightful French Country Inn. Chef/Owner Ron Gallaher features the simple, flavorful food of the Burgundy Region of

France created from the freshest of local ingredients. In addition, La Bourgogne's wine list includes quality selections from Burgundy and California at modest prices. Open Monday through Saturday from 5:30pm to 10:00 pm. Reservations recommended at 329-6711. All major credit cards accepted.

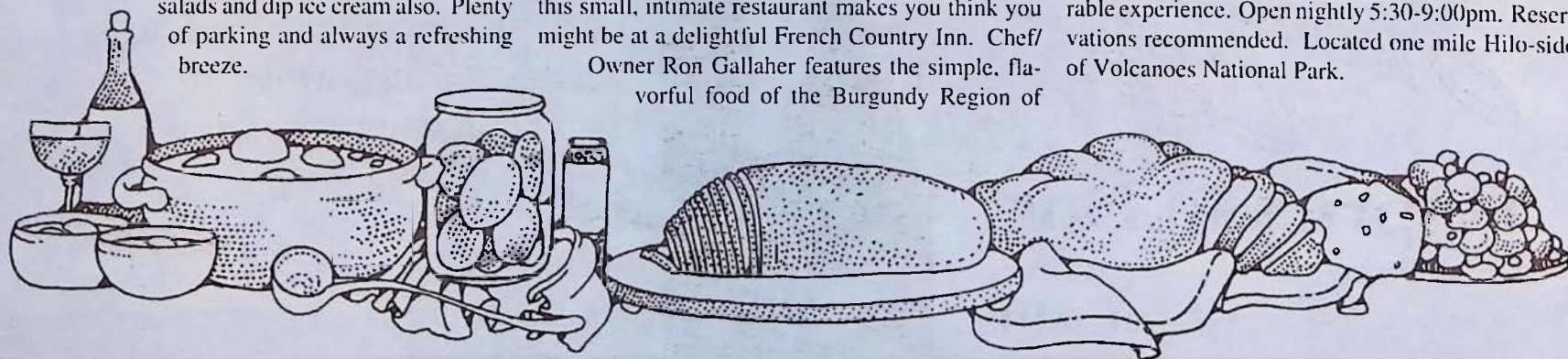
WAKEFIELD GARDENS & RESTAURANT: (pg. 23) For that old time feeling provoking life-long memories visit Wakefield Gardens & Restaurant. Enjoy relaxed charm while dining amid the personal, friendly, uncrowded, fragrant botanical atmosphere. World-wide letters relate our best features. Aloha Spirit- a warm welcome giving an "at home" feeling; Old Time Hawaiian Music, Fresh - Clean - Wholesome Food; Something for everyone and our Strawberry Papaya filled with special tuna salad received 4 stars in Gourmet Magazine; Kona hot or iced coffee, Kids cheeseburgers, vegetarian fare, homemade macadamia nut pies, reasonable prices. Free botanical garden self-guided tours. Open 11am - 3pm. Spread the word - the magic of romantic Hawaii still exists. Aloha!

PUNA

THE GODMOTHER - RISTORANTE ITALIANO: (pg. 14) A pleasant surprise awaits you. Located amid romantic surroundings on Main Street in Historic Pahoa Village, the large menu features delectable pasta selections and traditional New York-style family recipes. With indoor-outdoor dining, the Godmother is serving breakfast and lunch from 8am until 3 pm and dinner from 5 pm until 11 every day. Stop by, meet the family, enjoy the ambiance and savor the food. Daily specials, a full bar and a friendly staff combine to create the perfect occasion. Major credit cards welcome. Ciao Bella!

VOLCANO

KILAUEA LODGE: (pg. 15) Well known for Chef/Owner Albert Jeyte's Continental-local cuisine, Kilauea Lodge is located in the cool sub-alpine rain forest region of Volcano. the misty region encourages a hearty appetite and Chef Albert, whose menu favors fish and fowl, does not disappoint. An inspired wine list, helpful staff, Hawaiian decor, and historic Fireplace of Friendship, make Kilauea Lodge a memorable experience. Open nightly 5:30-9:00pm. Reservations recommended. Located one mile Hilo-side of Volcanoes National Park.



continued from page 21

coast in between has numerous tide pools, and pockets of green sand. A low scarp of eroded yellow-brown soil fringes the black basalt which takes the brunt of the waves. Fingers of struggling grass fringe gullies. It is a great place to go beach combing.

It can get quite warm at sea level. There is often wind, and there is little shade. People visiting the area should bring plenty of water because no drinking water is available. To cool off, some people swim near the boat ramp when the sea is not too rough.

Beyond the boat ramp the road is four wheel drive, and leads along the coast two miles to Mahana Beach. Mahana Beach is also called Green Sands Beach because it has a distinctive golden green color. Although none of the fragments in the sand are large enough for jewelry purposes, the beach is composed chiefly of peridot, a semiprecious gemstone.

These tiny green gems are a silicate, one of the many families of quartz, which cook out of the basaltic magma over time. (They are apparent as green flecks in the raw lava stones used to build the columns and walls of the Jagger Museum at Kilauea's Volcano National Park.) As lava reached the coast, erosional forces, and the specific gravity of the stones,

perhaps are responsible for the accumulation of such a large quantity of the granules that produced the green sand beach.

When looking at the severe landscape of the whole area it is hard to visualize what a delightful land it must have been about fifteen hundred years ago when people first lived there. They came to a lush land, but one with few food plants. Soon, in just a few seasons, the introduced food plants bloomed and produced their fruits. Over the centuries the land became one great garden. Hawaiians were not farmers, instead, they were the world's greatest gardeners. The soil was never tilled by beasts or machines, but always by hand. In the mild climate, there was no need for an extensive annual harvest. Only the food needed for the day was gathered from the garden. Intimate working with the land made Hawaiians expert in how to get the most from a given plot of soil.

Perhaps it was the expectation that the climate would not change that left the people so vulnerable when it did. The droughts, and other disasters have driven the original inhabitants away. Someday, maybe the rains will return, and Pele will release the underground water, then people can once again enjoy Ka Lae as those discovering it did. ■

West Wind Sailing Charters

Private 41' Ketch
Wet & Fun!

1/2 day, full day,
overnight charters

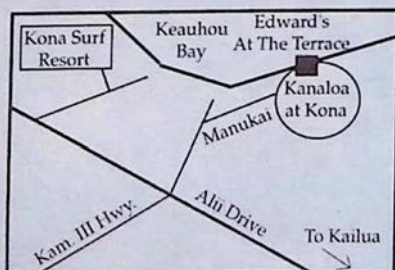


(808) 325-6471

EDWARD'S AT THE TERRACE

Featuring Mediterranean Classics, Ocean Side Tues. - Sun.
Serving Breakfast, Lunch & Dinner

322-1434



Holualoa
INN

"The finest B&B on this or
any other island in Hawaii..."

Jerry Hulse, L.A. Times

You are invited to visit this elegant
country estate overlooking Kailua Bay,
set amid coffee orchards and home
of Holualoa Kona Coffee Company.



HOLUALOA
Kona Coffee
company

Nightly Rates, \$100-150 • Weddings & Events Welcomed
Coffee Hulling & Roasting

For tours & information, call (808) 324-1121 or (800) 392-1812

EAST HAWAII AND HISTORIC HILO

When you talk about the old Hawaii, at least the one that hasn't been touched as much today by the long arms of commercialization and development, you cannot help but to mention the East Coast on the Big Island. At the center of all this is old town Hilo, seeing a revitalization of spirit thanks to the effort of the Downtown Hilo Organization is busy restoring and preserving the storefronts of this yesterday town. Aiding this effort are the wealth of new businesses occupying Hilo's old buildings.

One of the brightest spots has been the renovation and remodeling of the S. Hata Building by **Cafe Pesto**. This new restaurant has maintained the building's Renaissance Revival style of architecture and filled the air with smells of wood oven baked pizza and Pacific Rim Italian cuisine.

To add to this old Hawaii feeling are the daily Suisan Fish Market Auction and the Hilo Farmer's Market which held every Wednesday and Saturday in Downtown Hilo.

Outside the town to the north are the Hawaii Tropical Botanical Garden, located along a 4 mile coastal scenic route, and Akaka Falls with its self guided pathways that take visitors over ravines and past several other waterfalls before ending up at the grand daddy of them all, Akaka.

When you are done sight seeing, lodging in Hilo is a snap and can accommodate every type of visitor. The magnificent and luxurious **Hale Kai Bed and Breakfast** on the bluff above the ocean overlooks Hilo's premier surf spot, Honolii. Expect nothing less than gourmet breakfasts and plenty of privacy. Hale Kai also has available a private cottage facing a pool and ocean. If you are looking to stay within walking distance to downtown Hilo stop in at the affordable **Wild Ginger Inn** which features a jungle garden and stream setting overlooking Hilo Bay. The 1922 **Haili House Inn**, located across from the Lyman museum, is uniquely decorated in vintage Hawaiian eclectic decor and is one of the most popular

lodging opportunities for visitors seeking that feeling of old Hilo during their overnight stay. If a stay in the Hawaiian countryside is what you are seeking, head seven miles north out of town to

Papaikou and check in at **Hale Lamalani** vacation rentals. Situated at 1,000 feet above sea level this country retreat offers plantation style lodging with all the serenity one could ever desire.

After leaving Hilo you don't want to miss the drive north to Waipio Valley which takes you over scenic gorges that were once crossed by cane hauling trains in the hey day of sugar cane production. The plummeting waterfalls and river mouths under the extensive bridge systems leading north up the Hilo Coast are definitely an awesome sight. Akaka Falls State Park and the village of Honamu can be reached by taking Hwy. 220 off of the main route, Hwy. 19 north. See the map. Once you reach the Park a short paved hike will trail you past a network of smaller waterfalls, lush and colorful tropical foliage to the plummeting Akaka Falls. Its accessibility and grand size make Akaka Falls a popular stop along this eastern coast.

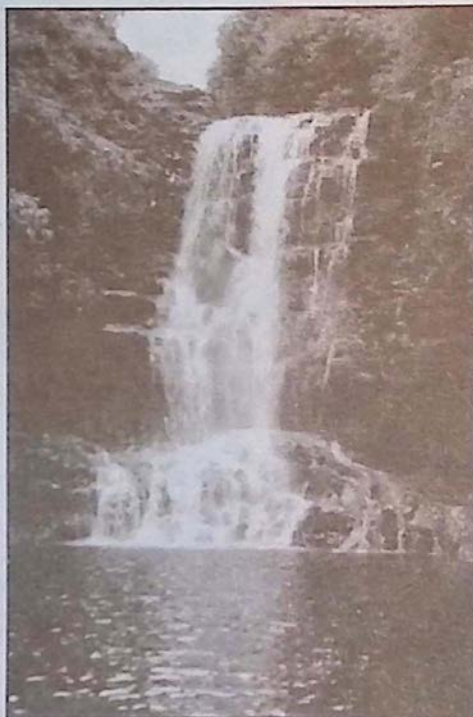
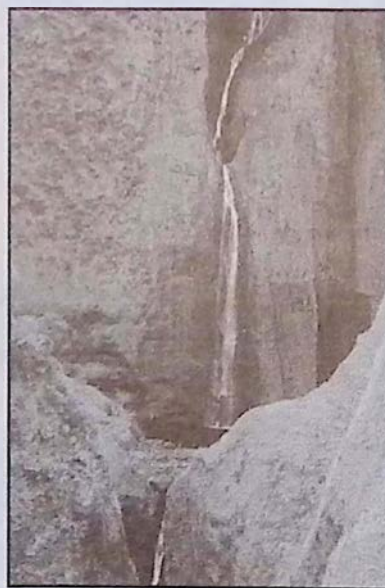


photo by Michael Stewart

We'll take you places
where your feet can't go!



**BLUE HAWAIIAN
HELICOPTERS**

ON THE BIG ISLAND:
961-5600
IN MAUI:
1-800-745-BLUE (2583)

Hale Lamalani (House of Heavenly Light)

A Hawaiian Hideaway, Vacation Rental & Hostel
Serenely situated with Inspirational Ocean, Mountain,
Hilo Bay and Volcano Views from \$15 to \$55/Night!
With Breakfast Fixings

Located 5 miles north of
Hilo above Botanical Gar-
den and before Akaka
Falls at the gateway to
Hamakua.



Phone/Fax: (808) 964-5401, Outside Hawaii 1-800-238-8BED
R.R. 1 Box 206, Papaikou, HI 96781

HISTORIC HILO

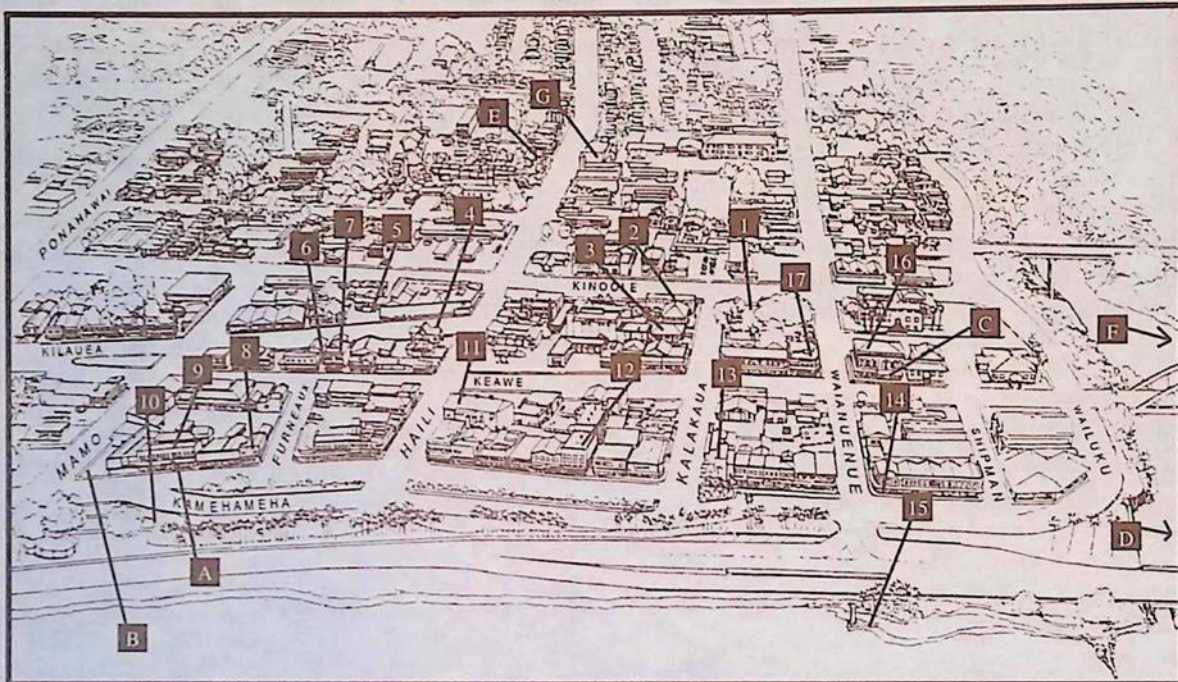
Historical information and map provided by the Downtown Hilo Organization whose interests involve the preservation of Old Hilo, Hawaii.

This self-guided walking tour of historic Downtown Hilo will take about one hour if walked continuously. However, you are encouraged to go at your own pace and spend additional time discovering and exploring that which interests you.

The seventeen stops along the way will provide you with information about the town from 1870 to the present. The history of Hilo begins much earlier, however, with the arrival of the Polynesians in 1100 A.D. They eventually inhabited the shores of Hilo Bay, farmed their crops, fished and traded their goods with each other along the Wailuku River. Changes came to this life-style upon the arrival of missionaries who brought with them new ideas, education and Christianity.

Hilo became a stopping place for explorers curious about the active volcanoes, whaling ships and traders. By the 1900's a number of wharves had been constructed, the breakwater was begun and the railroad connected Hilo with other parts of the island. Hilo became the center of commerce. Two destructive tsunamis, in 1946 and 1960, caused a shift in the location of Hilo's government and commercial life.

Today, historic Downtown Hilo is alive and bustling with renewed energy. New and old businesses alike are meeting the challenge of revitalizing our city center while preserving the historic character which remains very special.



Historic Structures

- | | |
|---|---|
| <ol style="list-style-type: none"> 1. Kalakaua Park 2. Old Police Station 3. Hawaiian Telephone 4. Central Christian Church 5. Taishoji Soto Mission 6. Furneaux Lane 7. Ancient Order of Foresters Building 8. Furneaux Building | <ol style="list-style-type: none"> 9. S. Hata Building 10. Bayfront 11. Palace Theatre 12. S.H. Kress Company Building 13. First Hawaiian Bank Building 14. Koehnen's Building 15. Landing Wharf 16. First Trust Building 17. Pacific Building |
|---|---|

Dining, Lodging and Other Sights...

- | |
|---|
| <ol style="list-style-type: none"> A. Cafe Pesto (<i>Pacific Rim Cuisine</i>) B. Hilo Farmer's Market C. Roussels (<i>French Creole Cuisine</i>) D. Hale Kai B&B E. Haili House Inn F. Wild Ginger Inn G. Lyman Museum |
|---|



whether you choose...

WOOD-FIRED PIZZAS, FINE PASTAS

OR

SCRUMPTIOUS DESSERTS

you will always get...

AN ADVENTURE IN TASTE

CAFE

Pesto

HILO BAY

OPEN FOR LUNCH & DINNER

Historic S. Hata Bldg., Hilo Bay, 969-6640

Live Hawaiian Music on Sundays, 6pm - Closing

1940's Plantation
style B & B
with jungle
garden &
stream. A
nonsmoking Inn.

\$39 private
bath double
with breakfast.
100 Puueo St.
Hilo, HI 96720
Call 808-935-5556

BED & BREAKFAST

Hale Kai

Bed & Breakfast

Private
Cottage
also available

Bjornen

★ ★ ★ ★

A 4 Star Bed & Breakfast on the bluff facing the ocean
and overlooking Hilo Bay and Honolii surfing beach

VERY PRIVATE, POOL, JACUZZI, BREAKFAST,
Private Baths, Well Decorated Rooms

111 Honolii Pali, Hilo, HI 96720

(808) 935-6330 Fax 935-8439

Double
occupancy is
\$80 and up

Haili House Inn

A Hawaiian Style Bed & Breakfast
in Historic Downtown Hilo

(808) 969-7378

Relax in downtown Hilo's only B&B. Uniquely decorated in vintage
Hawaiian eclectic decor. Located across from Hawaii's famous
Lyman Museum. Mention this ad for \$10 off multiple night booking

Fresh Breads & Local Fruit Served Daily

HONOKAA

CURIO

TRADITION

SIMPLICITY

SINCERITY

For years the town of Honokaa sat idle, its home town theater empty, local storefronts ghostly quiet, and streets void of the bustle that once rumbled down Mamane Street during the boom days of the Hamakua Sugar Company, an industry that for the last century has been the life blood of the people in this region. Since the decreasing activity of sugar production over the years and the recent decision this year to halt sugar production all together, the local citizens of Honokaa have redirected their energy and begun one of Hawaii's most spirited movements of rejuvenation. Local merchants have taken the initiative to reopen some of the closed doors in this picturesque town, including the

local ice cream parlor, now called **Simply Natural**, outfitted with an old fashioned soda fountain and spinning stools. Other shops such as **Na Pa Aloha**, **The Treasure Shop** and the **Honokaa Trading Company**, as well as many curio shops overflow with Hawaiian memorabilia, local crafts, and wearable arts. Home town cooking flows out of **Mateo's Pizza**, **Jolene's Kau Kau Korner**, and **Mamane Street Bakery** to add to the distinctly local flavor of

what pizza parlor owner, Alex Mateo proudly calls, "The New Honokaa". Included in this new Honokaa is the town's farmers market that has become a weekly event in the downtown area in front of the Historic Botelho Building. The market is open each Saturday of the month.

As Hawaii's old theaters are becoming more and more popular the citizens of Honokaa celebrated the reopening of their own People's Theater.

The doors have officially been opened and evening feature films can be caught every Friday, Saturday and Sunday evening at Honokaa's historic theater. Also located in Honokaa is the **Hawaiian Macadamia Nut Plantation** which is located down the hill from Kau Kau Korner. The plantation allows visitors the opportunity to view the inner workings of a macadamia nut factory. Factory creations fill the store shelves and will undoubtedly make your taste buds dance when you try them. Also featured is the plantation's own bake shop.

Legend has it that it was in Waipio Valley, "the land of the falling water", the great King Kamehameha, as a young boy, received his leadership training and first learned to surf. Today, family ohanas, "houses", still dot the landscape which is separated by a river that leads into the open sea. Local farmers and their families continue to make their way of life from farming taro and fishing off the sandy shores of this peaceful and remote valley floor.

Outside of Waipio Valley and Honokaa town are other early and small settlements of the Hamakua region such as Paauilo, Kukuihaele and Laupahoehoe all filled with a rich and local culture that happily survives in this region of the Big Island. Overnight accommodations can be found at any of the several B&B's in the region. See the listing on page 33. A couple of popular choices are Waipio Wayside Bed & Breakfast Inn and Waipio Valley Artworks. The historic plantation setting at **Waipio Wayside Bed and**



BOTELHO'S GARAGE

Open Daily
in Honokaa



Banana Taro
Pancakes
Fresh Deli
Sandwiches
Old Fashion
Ice Cream Sodas
Soups of the Day
Hilo Homemade
Ice Cream
Even Taro
Ice Cream

See our coupon for a free
old fashion ice cream soda
Now Serving Breakfast
775-0119

**Mateo's
PIZZA**

Spaghetti
Salads
Veggie Pizza

Open Daily at 11 a.m.



SPECIALS
2nd Medium
\$7.00
2nd Large
\$9

HONOKAA
775-0944

It's the return of
HISTORIC
PEOPLE'S THEATER

Feature Films Now Playing
every Fri., Sat. and Sun.

in Downtown Honokaa

775-0000

HONOKAA
FARMERS MARKET
Every Saturday
in Downtown Honokaa



Located in
Honokaa

Open
Mon - Sat
9 am - 8 pm

Serving the Island's Favorite
Local and American Dishes

What better place to share
a little something with the
community and travelers
from afar.

dine in 775-9498 take out

**MAMANE
STREET
BAKERY**

• Cafe •



Wholesale and Retail

Located in
Downtown Honokaa
(808) 775-9478

Fine Quality
Baking,
Quiches,
Focaccias,
Croissants,
Desserts,
Pastries,
Cookies,
Espresso,
Cappuccino

Honokaa
Trading Company

Antiques
Collectibles
New & Used
Goods &
Furniture



Downtown Honokaa
(808) 775-0808

The Treasure Shop

Featuring...

A little bit of this and a
little bit of that!

Antique & Craft

Co-op.

Open Daily

Located next to Simply
Natural in Honokaa

775-8101

"NA PA ALOHA"
CARDS, GIFTS, SOUVENIERS



Collectibles, Vintage
Sheet Music, Original
Works of Art, Children's
Quality Books & Toys,
Shell Leis, Baskets,
Unique Crafts

HONOKAA TOWN
(Across from Bank of Hawaii)

Open Weekdays and Sometimes Sundays
8:30 AM - 4:00 PM
(usually)

BILL & MARILOU IKAIKA
775-9173 or 936-7483

HAMAKUA

SUGAR NUTS WATERFALLS TRANQUILITY

Breakfast Inn offers 5 comfortable guest bedrooms in a traditional bed and breakfast environment. Enjoy a home cooked breakfast while chatting with new friends from around the world. See add on last page. **Waipio Valley Artworks** hosts several vacation rentals with waterfall and valley views and offers guests complimentary gourmet Kona coffee. See their ad below. Beyond the sugar plantations, in aremote part of the Big Island, Hale Kukui perches on a high bluff overlooking one of the most striking stretches of coastline on the island. The cedar guest



EARLY WAIPIO VALLEY VILLAGE PRINT - engraving by Doms, circa 1785.

cottage, a short walk from the main house, was designed by owner, Bill McCowatt, and completed in fall, 1992. It includes a studio and two-bedroom unit, both of which have open-beamed ceilings, white wicker furniture, berber carpeting, small kitchens and full baths. See their ad inside back cover.

New doors will continue to open for all of Hamakua as a period of change sweeps through the land with the fall of the sugar empire and the rise of small businesses in Honokaa.

Honokaa-Hamakua Farmers and Cultural Market July Schedule

Market held every Saturday beginning at 9:00 AM in front of the historic Botelho Building in downtown Honokaa
Call Hal Hisa Yamato at 775-9239 for more information

July 2	Pre 4th of July Celebration "Exploring Freedom" Theme	July 16	"Freedom Within Families" Theme P. III
July 9	"Personal Freedom" Theme P. II	July 23	"Freedom of Local Community" Theme P. IV
		July 30	"Freedom of our State, Nation, the World" P. V

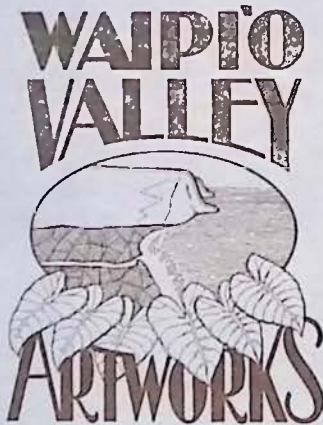
Good Produce, Culture and Fun at the Market

Hideaway retreats offering complete privacy and full modern comfort while you enjoy old Hawaii.

Hiking, Unique Shopping, Four Wheel Drive Tours, Surfcasting, Fresh Water Fishing, Horseback Tours, Bird Watching, Surfing

Free Ice Cream Cone if you mention this Ad while making a reservation

Phone: (808) 775-0958
Fax: (808) 775-0551



VACATION RENTALS
DAILY ~ WEEKLY ~ MONTHLY

Fantastic Valley and Waterfall Views, All Units Separate and Private, Accommodations Starting at \$65/Night Double Occupancy, Conveniently Located (halfway between Hilo and Kona), Tastefully Decorated by our Island's Talented Artists, Complimentary Gourmet Kona Coffee

Call **TOLL FREE**
(mainland, Canada only)
1-800-492-4746

HAWAIIAN MACADAMIA NUT PLANTATION

Factory Tours...and more!

Visit our Factory and Store in Honokaa for delicious macadamia nut creations - from freshly-roasted nuts surrounded by creamy chocolate, to macadamia nuts and coconut combined in a fantastic butter brittle, to the best macadamia nut cookies from "our" bakery...mmmm good.

LOCATED IN HONOKAA TOWN, THE HEART OF HAMAKUA

775-7201

Hawaii Island Bed & Breakfasts by Region

HAMAKUA REGION

1. **Kamuela's Mauna Kea View** Ph: (808) 885-8425
Popular private suite & attached cottage (each w/fireplace, sundeck, phone, TV), borders ranchlands overlooking majestic Mauna Kea. Enjoy Hapuna's white sand beach, Waipio, Pololu Valleys. A tradition since 1988 Kamuela's best rate. Enjoy this Real Find.

Richard & Deb Mitchell, P.O. Box 6375, Kamuela, HI 96743

2. **Sud's Acres** 808-776-1611 Ph: (808) 776-1592, 1-800-735-3262
We are located on a macadamia farm at 1800' elevation on the slopes of Mauna Kea with a view of the Hamakua coast. Our 2 bedroom cottage with bath, lvg. rm. is 5 mi. to Honokaa & 20 mi. to Waimea.

P.O. Box 277, Paauilo, HI 96776

3. **Waimea Gardens Cottage** Ph: (808) 885-4550 800-262-9912
Charming streamside cottage, inspected and rated "Excellent" by the American B&B Assn., has 2 units on 1 1/2 acres in the foothills of the Kohala Mtns. French doors open to private patios; private baths; .2 mi. west of Waimea town; 8 mi. to best beaches. \$100 dbl.; Min. 3 Nts.

Write: P.O. Box 563, Kamuela, HI 96743

4. **Waipio Wayside B&B** Ph/Fax: (808) 775-0275, 1-800-833-8849
Experience the gracious hospitality of a 1938 sugar plantation home. We cater to those who wish to unwind in a comfortable atmosphere. Choose from 5 unique bedrooms, 2 with full bath, 1 with 1/2 bath. 1 night stay \$70-\$100, multiple nights \$60-\$90 plus tax.

Jackie Horne, P.O. Box 840, Honokaa, HI 96727

HILO REGION

5. **Maureen's Bed & Breakfast** Ph: (808) 935-9018
The former Saiki mansion, built in 1932, offers a Japanese tea room, koi ponds and botanical gardens. The home is located across from swimming and snorkeling and is convenient to downtown Hilo. Breakfast is generous and includes tropical island fruits.

Please phone for availability.

6. **Our Place Papaikou's B&B** Ph: 1-800-245-5250, (808) 964-5250
Located 4 miles north of Hilo on Rt. 19. Our 4 bedrooms are in a modern cedar home. Overlooking a stream, tropical vegetation, common lanais lead to the bedrooms, cathedral living room, library, TV, fireplace, grand piano. Full continental breakfast \$50-\$65.

Box 469, Papaikou, HI 96781

KAU REGION

7. **Becky's B&B** Ph/Fax: (808) 929-9690 or 1-800-235-1233
Rooms affordable \$38 up, with private baths & entrance, full breakfast cable TV. Black or Green sand beaches, swim with turtles, golfing. Or after a long day, just sit in our whirlpool spa & enjoy a lovely evening under the stars. Our town, gives you a feeling for old Hawaii.

Becky & Chuck McLinn, P.O. Box 673, Naalehu, HI 96772

8. **Bougainvillea B&B** Ph/Fax: (808) 929-7089 1-800-688-1763
Nights & Breakfasts to Remember. In historic "Kau" district between Kona & Hilo. Near green & black sand beaches, South Point & Ocean View. Rooms-pvt. bath, entrance & TV/VCR. - Pool & spa. Hosts Martie & Don Nitsche share secrets of Hawaii. "Your home to our home."

P.O. Box 6045, Ocean View, HI 96704

9. **Wood Valley B&B** Ph:(808) 928-8212, 1-800-854-6754
Vintage plantation home/farm- in misty uplands above rural sugar town. Near Green & Black sand beaches, ocean view. Unique outdoor bath and steam house, quiet healing environment, homegrown breakfast Hawaiian. Gay Friendly.

P.O. Box 37, Pahala, HI 96777 Fax 808-928-9400

KONA REGION

10. **Adrienne's B&B** Ph: (808) or 1-800-328-9726 Fax: 808-328-9787
Our cedar home has an unobstructed ocean view from hot tub on our lanai where a healthy breakfast is served. All rooms w/kings or queens, private baths, entrances, TV, VCR & refrigs.. Near beaches and Place of Refuge. Rates \$40-\$70 with families welcome

85-4577 Mamalahoa Hwy. #8E, Capt. Cook, HI 96704

Bed and Breakfasts of THE HAWAII ISLAND B&B ASSOCIATION



Stay in one or more of our unique Bed and Breakfasts located throughout the island. You will enjoy comfortable lodgings at reasonable costs and friendly knowledgeable hosts with inside information on local attractions. We will make your stay memorable and you too will capture the true ALOHA SPIRIT OF THE BIG ISLAND OF HAWAII.

11. **Adrienne's Casa Del Sol B&B** Ph: (808) 326-2272 / 1-800-395-CASA
Footsteps away from ocean, 5 Rms., with ocean views, pr. baths, lanais, TV. Bkft. buffet served pool/spa side. Watch surfers at Lyman's Pt., whale & fishing boats. Minutes to world class golf, diving, shopping, restaurants & airport. Rates \$80-\$150

77-6335 Alii Dr., Kailua-Kona, HI 96740

12. **Da Third House B&B** Ph: (808) 328-8410
Enjoy the privacy of this quiet, peaceful studio with private entrance & lanai. Unobstructed ocean view. Relax in hammock amidst lush tropical grounds. Minutes from sandy beaches, best snorkeling. Full continental breakfast, King bed, refrig., micro, TV, VCR, full bath. Rates \$50-\$60

P.O. Box 321, Honaunau, HI 96726

13. **Hale Maluhia**, Ph: 1-800-559-6627, (808) 329-5773, Fax: 326-5487
Country Living, easy airport access and close to Kailua. Old Hawaii coffee land, Holualoa. Rambling plantation home, lg. rms., pvt. baths. Breakfast for 2 from \$55. Fresh breads, fruits, juices, eggs, tea and Pure Kona Coffee. Spa/ Massage Table, beach eqpt., Cable/VCR Lib.

76-770 Hualalai Rd, Kailua-Kona, HI 96740

14. **Merryman's B&B** Ph: (808) 323-2276 1-800-545-4390
Charming ocean view B&B in Kealahou, minutes from the best snorkeling. Enjoy immaculate, spacious rooms furnished w/antiques & fresh flowers. A delightful Hawaiian breakfast of fresh fruits, chef's special & Kona coffee is served each morning. Snorkel gear & beach supplies provided.

P.O. Box 474, Kealahou, HI 96750

15. **Rosy's Rest** Ph: (808) 322-REST
For those who love up country old Hawaii and natural beauty. A panoramic view of miles of Kona Coast shoreline. Ohia "TWIG" Bed inspires country cottage look. Private bath, TV, VCR, low rates. Walking distance to Holualoa town. Home of many artists, galleries and shops.

Rosy's Rest, 76-1012 Mamalahoa Hwy., Holualoa, HI 96725

Waipio Wayside B&B Inn



Merryman's B&B



My Island B&B



16. Three Bears's B&B Ph/fax: (808) 325-7563, 1-800-765-0480
Enjoy spectacular ocean views from our new cedar home nestled amongst tropical fruit trees & flowers. Located above Kona Coast Beach Park, our rooms feature private baths, TV, micro, refrig., coffee maker. A hearty breakfast is served on the lanai. Wir sprechen Deutsch.

Anne Stockel, 72-1001 Puukala, Kailua-Kona, HI 96740

VOLCANO REGION

17. Carson's Volcano Cottage Ph: (808) 967-7683 1-800-845-LAVA
Secluded, peaceful B&B next to Volcano Ntl. Park. Beautiful theme rooms, with botanical garden views. Unique Bromeliad collections. Romantic outdoor jacuzzi. All rooms have private entrances and baths. Some with fireplaces. Rates start at \$65.00 night.

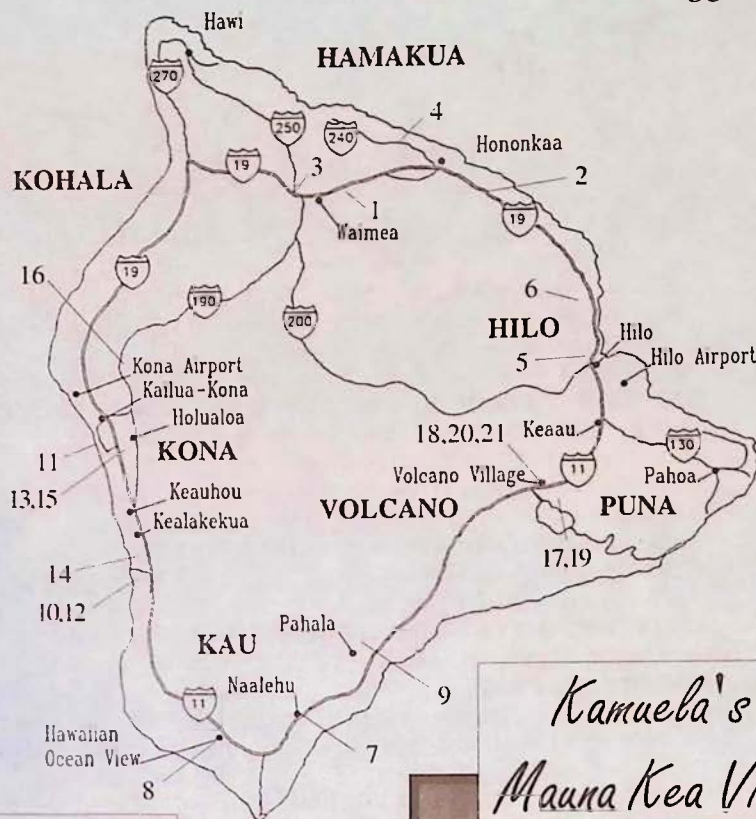
P.O. Box 503, Volcano, HI 96785

18. Chalet Kilauea-The Inn at Volcano Ph: 1-800-937-7786
EXPLORE TREASURES FROM AROUND THE WORLD. Amazing Theme Rooms, Tree House suite (\$75-\$175). Amenities include: jacuzzi, TV, fireplace, library, sunken tub, robes, flowers, chocolates, maid service, afternoon tea and a candlelight 2-course gourmet bkfst. Just outside Volcanoes National Park.

P.O. Box 998, Volcano Village, HI 96785

19. Hale Ohia Cottages Ph: (808) 967-7986, 1-800-455-3803
Noted in the NEW YORK TIMES, the SOPHISTICATED TRAVELER, historic hideaway, unique architecture, garden setting, fireplaces, heated Japanese Furo, breakfast brought to your room. All accommodations have private baths. One mile from Natl. Pk., Rates: \$60 to \$95.

Michael Tuttle, Box 750, Volcano, HI 96785



Hale Ohia Cottages



Kamuela's Mauna Kea View



Lokahi Lodge

20. Lokahi Lodge Ph: (808) 985-8647 or 1-800-457-6924
Newest, affordable LUXURY B&B in Volcano. 1 mile to Volcano Ntl. Park, offers accommodations with private baths & entrances to each room. A sumptuous breakfast includes fresh baked homemade bread, juices, fruits, jams, coffee and teas. A haven for those who want to be pampered!

P.O. Box 7, Volcano, HI 96785

21. My Island B&B Ph: (808) 967-7216, 808-967-7110, Fax: 808-967-7719

An 1886 historic missionary home at Kilauea Volcano surrounded by a 5 acre botanical estate. Rooms in main 3 story house with shared or private bath. Couples, singles & families welcome. Full breakfast. \$30 to \$75. All the macnuts you can eat.

Gordon & Joann Morse, P.O. Box 100, Volcano, HI 96785

July On The Big Island

Sundays Every Month - JAZZ - LIVE IN HILO

The Skyliners play music from the Big Band era at D'Angoras in the Hilo Lagoon every Sunday afternoon from 3:30 to 6:30 p.m. 776-1611 for information.

- 1 **SLACK KEY GUITAR CONCERT WITH RAYMOND KANE**
7:30pm, Kilauea Theater, Volcanoes National Park, 967-8222.
- 1-29 **"JAPAN ARTIST MIEKO MORIYA"**
A well known artist from Japan whose pseudonym is "SHUKEI", exhibits her work. Mini Gallery, Wailoa Center, Hilo, 933-4360.
- 1-30 **"HAND CARVED GOURDS & PAINTING TOO"**
Artists Carol Kopp and Mary Ann Hibdon show their artistry in these media. Mini Gallery, Wailoa Center, Hilo, 933-4360.
- 2 **SLACK KEY GUITAR WORKSHOP WITH RAYMOND KANE**
9am to 12pm presented by V.A.C. call 967-8222 for info.
- 7 **POETRY READING**
Island Books in Kainaliu will be featuring a poetry reading at their Kainaliu location beginning at 7:30pm. Featured works by Ray Freed and Tony D'Arpino. Call 322-2006 for info.
- 8-30 **"BASKETS: REDEFINING VOLUME AND MEANING"**
The Volcano Art Center and the East Hawaii Cultural Council have joined forces to bring this show of contemporary basket makers to Hilo. Exhibit will occupy the main exhibition gallery at the East Hawaii Cultural Center. 9am to 4pm. 967-8222.
- 9 **PATRICK SANSFIELD RECEPTION**
at the Volcano Art Center Gallery from 5pm to 7pm. This exhibit, entitled "Mater" (Latin for mother), is comprised of recent works from the American Woman Series. Part III and is a tribute to all life and all women (particularly women as mothers). Reception is free. Exhibit runs through July 31. 967-8222.
- 9-30 **"JAPANESE CHAMBER OF COMMERCE"**
and the Bishop Museum will be celebrating the annual International Festival of the Pacific held during July. A traveling exhibition to be announced. Opening reception will be Monday, July 18, at 4:30pm. Wailoa Center, Hilo, 933-4360.
- 11-12 **HAWAIIAN QUILTING**
with Molokai artist Ginger LaVoie. Ginger teaches two identical quilting workshops at Cooper Center. 6pm to 9pm Monday, 1pm to 4pm Tuesday. 967-8222.
- 12 **AFTER DARK IN THE PARK PRESENTS: "The Father Damien Commemorative Hawaiian Quilt"**
Father Damien dedicated his life to working with Hansen's disease patients of Kalaupapa until his death in 1889. Molokai fiber artist Ginger La Voie has created a commemorative quilt to celebrate Father Damien, who will be brought closer to sainthood in 1994 during a beatification ceremony in Belgium. La Voie will offer a slide program about Hawaiian quilts and Father Damien. Her unique commemorative quilt will be on display. Kilauea Visitor Center Auditorium, 7:00pm, Volcanoes National Park, 967-7184.
- 15-17 **"OLIVER!" V.A.C.'S SUMMER MUSICAL AT KILAUEA THEATER** See ad on page 16.
- 15-24 **"THE WHITE MOURNING CLOTH"**
An exhibit of sculptures by Vietnamese-American artist, Phan Nguyen Barker of Kona, who is well known for her exquisite batik painting on silk. "This series of works is about my unresolved feeling for my motherland, about mourning the souls that died in the Vietnam war, and about healing the wounds--mine and others--whose life has been affected by the war," said Barker. Kealakekua Center, Kealakekua, 10am to 8pm. Reception for the artist on July 15th from 6pm to 8pm is open to the public and island visitors. Call 329-8162 for info.
- 19 **AFTER DARK IN THE PARK PRESENTS: "Uluhe - Forest Healer or Fern From Hell?"**
Uluhe, also known as false staghorn fern, is a climbing fern that forms impenetrable thickets that are a hazard to hikers and hunters. Why is this native fern so common and what role does it play in the forest ecosystem? Ann Russell, ecologist with Iowa

State University, has been researching uluhe for several with Iowa State University, has been researching uluhe for several years and will present a program on this often problematic plant. Kilauea Visitor Center Auditorium, 7:00pm, Volcanoes National Park, 967-7184.

21 **PHOTOGRAPHER MICHAEL STEWART PRESENTS: "AN EVENING OF MOLTEN IMAGES"**

This audio-visual experience will be presented at the Kona Library at 6:30pm. For more information call 334-3270.

22-24 **"OLIVER!" V.A.C.'S SUMMER MUSICAL AT KILAUEA THEATER** See ad on page 16.

22-24 **"DR. DOLITTLE" LIVE AT THE ALOHA THEATER** see page 20 for information and showtimes

26 **AFTER DARK IN THE PARK PRESENTS: "Lava Tubes of the World"**

Found world-wide, lava tubes are among the many fascinating underworldly wonders explored and recorded by researchers and cavers. Active lava tubes transport lava great distances from active vents. William Halliday, Chairman of the Commission on Volcanic Caves of the International Union of Speleology, will offer a slide program on these complex geological structures. Kilauea Visitor Center Auditorium, 7:00pm, Volcanoes National Park, 967-7184.

29,30 **"OLIVER!" V.A.C.'S SUMMER MUSICAL AT KILAUEA THEATER** See ad on page 16.

29-31 **"DR. DOLITTLE" LIVE AT THE ALOHA THEATER** see page 20 for information and showtimes

30 **12th ANNUAL KILAUEA VOLCANO WILDERNESS RUNS**

26.2 mile marathon, 10 miler and 5 mile race in Hawaii Volcanoes National Park. Application deadline is July 1st and may be obtained at running stores, bicycle shops and sporting goods stores or by sending a self-addressed stamped envelope to Race Director, Box 458, Volcano, HI 96785 or phone 967-8603. If you are interested in volunteering for the race call 967-8603.

31 **RAKU SUNDAY**

Participants purchase one of Chiu's tea bowls which they will glaze and fire under supervision and guidance. History and techniques of raku will be discussed. 11am to 3pm. 967-8222 for info.



NOVEMBER 3-12, 1994

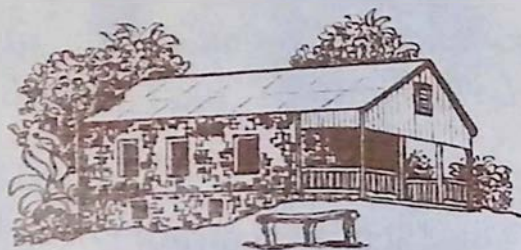
1994 KONA COFFEE CULTURAL FESTIVAL BOOSTER BUTTON WINNING DESIGN

Pahoa resident and graphic artist Amy Young rose to the design challenge set forth by the Kona Coffee Cultural Festival with her winning entry showing the strength and rugged beauty of the famed upslope Kona coffee belt. Young's logo incorporates this year's theme, *Perfection In A Cup*, and was designed with an organic presence to reflect the purity of Kona coffee.

For information on this years festival and events call (808) 326-5634.

Kona Historical Society Museum

The Kona Historical Society, a non-profit organization, was founded in 1976 to collect, preserve and disseminate information about the history of the Kona districts on the island of Hawaii. It maintains a growing reference library and archive containing photographs, manuscripts, maps and oral histories as well as a small collection of artifacts.



Historical Photo Exhibits on display every month

Museum Hours

9:00 a.m. - 3:00 p.m. Weekdays

Closed All Holidays

ADMISSION IS \$1.00 (members & children under 12 free)

Located on Highway 11, one-half mile south of rural Kealahou.

P.O. Box 398 Captain Cook, HI 96704

TELEPHONE (808) 323-3222

Adrienne's Casa Del Sol Bed and Breakfast Inn

(House of the sun - a traditional Bed and Breakfast)

Offering guests
the true Aloha
Spirit of Hawaii!



Ocean Front/Views From Every Room & Suites (\$80-\$150), all with Private Baths, Breakfast Buffet Served By Inground Swimming Pool/Ocean View Spa Area, Relaxing Atmosphere- Watch Surfers, Whales, Fabulous Sunsets from your Chaise, Minutes to World Class Golf, Diving, Shopping, Restaurants, Charter Fishing, Village or Airport



Stop By Now: 77-6335 Alii Dr., Kailua-Kona, HI 96740
or call (808) 326-CASA(2272)



HALE KUKUI

(halay koo-koo-ee / house of the candlenut tree).

"The dessert of our vacation"

-BZ, Illinois

Our guest cottage is located on 4.2 acres of high cliff ocean front above majestic Waipio Valley with a spectacular view looking out over 20 miles of 1,000' cliffs, waterfalls & Maui. Nestled above an orchard, each unit has a living area, kitchenette, private bath & lanai. Avocados & bananas grow wild above the pools of our year round stream. Lush & tropical, nearby Waipio Valley has a mile wide black sand beach, river, taro farms, horse back & wagon tours.

Studio \$75 / 2 bedroom \$95 (night) / 3 bedroom \$150

(808) 775-7130, Bill or Sarah

or 1-800-444-7130

KONA COFFEE KAHLUA CHOCOLATE CAKE

3	eggs
3/4 cup	granulated sugar
1/2 cup	butter
1 cup	light brown sugar, packed
2 1/4 cups	all-purpose flour
1/2 cup	unsweetened cocoa powder
1 1/2 tsp.	baking soda
3/4 cup	strong brewed cold Kona Coffee
3/4 cup	Kahlua
	Kahlua Frosting

Grease and flour two 9 in. cake pans. Preheat oven 350 degrees F. Beat egg whites until frothy; then beat in sugar until stiff peaks form. Set aside. Cream butter and brown sugar until fluffy. Beat in egg yolks one at a time. Sift flour, cocoa, baking soda together. Add to creamed mixture alternately with Kona coffee and Kahlua; blend well. Fold egg whites into batter. Pour into prepared pans. Bake 30 to 35 minutes or until done. Cool 10 min., invert on wire rack; remove pans. Cool before frosting. Serves 10-12.

Kahlua Frosting:

In large bowl, cream 6 Tbsp. butter and 1 lb. sifted powdered sugar. Add 3 Tbsp. unsweetened cocoa powder, 3 Tbsp. Kahlua and 2-3 Tbsp. hot Kona coffee; beat until smooth.

HAWAII'S ONLY

Submarine Adventure

Come descend into the ocean world with us as we explore 25 acres of Kona's natural coral reef and hundreds of tropical fish. Life under the Hawaiian ocean will fascinate you!

FREE ATLANTIS CAP
see our coupon

Hourly dives daily
Departing from
King Kamehameha's
Kona Beach Hotel
on Alii Drive in
Kailua-Kona

Atlantis
SUBMARINES

For reservations please call or see nearest activity desk.

(808) 329-6626

Restaurant
La Bourgogne
CUISINE FRANCAISE

"...the classic French cuisine at this wonderful, intimate place may be the best in Kona"

The Zagat Restaurant Survey

Monday-Saturday 5:30 to 10:00 p.m.
3 miles south of Kailua-Kona on Hwy. 11

RESERVATIONS RECOMMENDED
329-6711

Waipio Wayside

Bed & Breakfast Inn
(10 minutes from Waipio Valley)

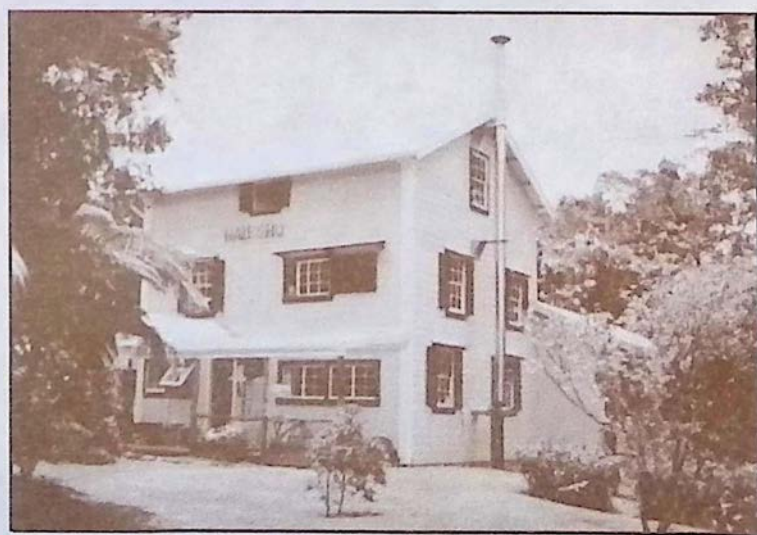


Enjoy a peaceful and relaxing retreat

Five Comfortable Bedrooms,
Large Deck with Double Hammocks,
Great Homemade Breakfast,
Price Ranges from \$50 - \$100.

775-0275 or 1-800-833-8849

MY ISLAND BED & BREAKFAST AT VOLCANO



Featuring...

- ~All the macadamia nuts you can eat~
- ~A variety of rooms at a range of prices~
- ~We serve a "stuff-yourself" breakfast~
- ~Located on a 5-acre estate full of flower gardens~
- ~Personalized touring information for East Hawaii~
- ~Come spend time in our 108-year old historic house~

967-7216 OR 967-7110

(See our listing in B&B section)