

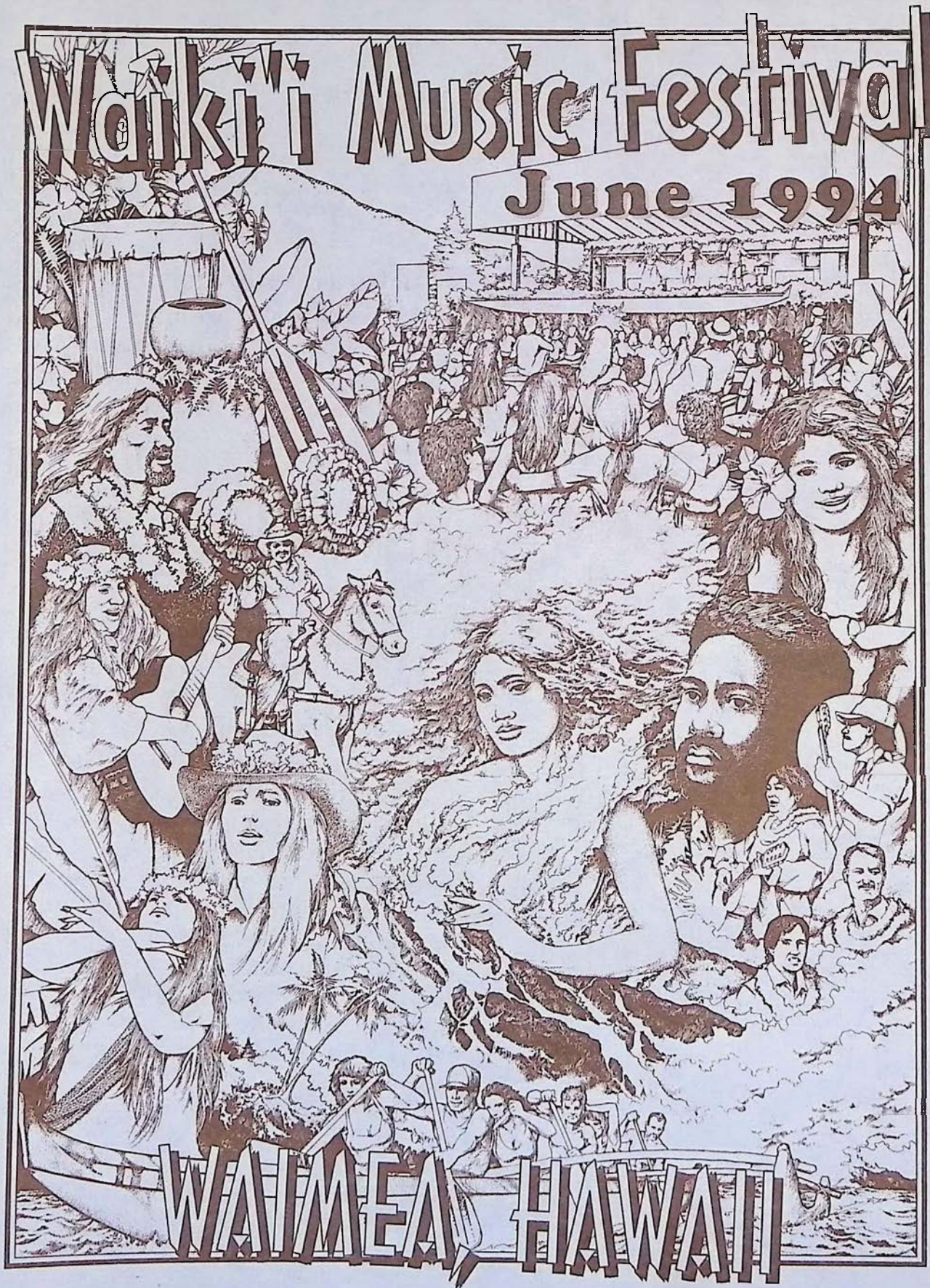
The Alternative Visitor's Guide

FREE



Coffee Times

June 1994 / Big Island of Hawaii / Volume 2 Edition 3



Carroll



Kopono



Bright

HAWAII ISLAND INDEX OF EVERYTHING

ART GALLERIES

Ackerman Galleries	889-5971	P. 9
Cook's Discoveries	885-3633	P. 11
Cottage Gallery	328-9392	P. 23
Upcountry Connection	885-0623	P. 12
Volcano Art Center	967-8222	P. 16
Wo On Gallery	889-5002	P. 8
Woodcarver's Corner	985-8518	P. 17

COFFEE FARMS

Old Hawaiian Coffee	328-2277	P. 5
---------------------	----------	------

COFFEE RETAILERS AND CAFES

Bad Ass Coffee Co.	1-800-338-7139	322-2646	P. 21
Holuakoa Cafe		322-CAFE	P. 25
Kohala Coffee Mill		889-5577	P. 9
Waimea Coffee & Co		885-4472	P. 11

DINING

DINING		
Aloha Cafe (International, Mexican ...)	322-3383	P. 20
Bamboo (Pacific Rim, Thai.)	889-5555	P. 8
Cafe Pesto (Pacific Rim Italian)	Kaiwihae 882-1071	Hilo 969-6640
Don's Deli (International)	889-5822	P. 7, 29
Edwards at the Terrace (Mediterranean Classics)	322-1434	P. 9
Jolene's Kau Kau Korner (Cafe)	775-9498	P. 27
La Bourgogne (French)	329-6711	P. 30
Luquin's Mexican Restaurant (Mexican)	965-9990	P. 36
Mamane St. Bakery	775-9478	P. 14
Matco's Pizza	775-0944	P. 30
Nuang Mai (Thai Kitchen)	965-8186	P. 30
Roussels (French Creole)	935-5111	P. 14
Sibu Cafe (Indonesian & Southeast Asian)	329-1112	P. 29
The Godmother (Italian)	965-0055	P. 26
Waipio Artworks Vacation Rentals	775-0958	P. 14
Wakefield Gardens (Home Cooked)	328-9930	P. 31
		P. 23

LODGING

LODGING		
Adrienne's B&B and Casa Del Sol	326-2272	P. 23, 35
Bamboo House	965-9340	P. 14
Carson's Volcano Cottages	967-7683	P. 16
Chalet Kilauea	967-7786	P. 17
Haili House Inn	969-7378	P. 29
Hale Kai B&B	935-6330	P. 29
Hale Maluhia B&B	1-800-559-6627	329-1123
Hale Ohia Cottages	967-7986	P. 16
Holualoa Inn	324-1121	P. 27
Ho'onanea	328-9445	P. 22
My Island B&B	967-7216	P. 36
Ohia Gardens	1-800-985-7051	P. 17
Papaya's Plantation	965-7119	P. 14
The Village Inn	965-6444	P. 14
Waipio Wayside	1-800-833-8849	775-0275
Wild Ginger Inn	935-5556	P. 28

MUSEUMS

Kona Historical Society	323-3222	P. 35
-------------------------	----------	-------

AIR, LAND AND OCEAN ADVENTURES

Atlantis Submarines (Submarine Adventure)	329-6626	P. 35
Body Glove Snorkeling Cruise (Snorkeling Cruise)	326-7122	P. 5
Chris' Bike Adventures (Bike Tours)	326-4600	P. 8
Koa Air Service (Helicopter, Plane Tours, Instruction)	326-2288	P. 35
Kona Bike Tours (Mountain Biking, Bike Equipment)	329-2294	P. 36
Kona Kayak (Tours, Rentals, Sales)	326-2922	P. 24
Nautilus Submarine Experience (Underwater Reef Tours)	326-2003	P. 5

SPECIALTY SHOPS

Antiques	Na Pa' Aloha	775-9173	P. 30
Clothing	As Hawi Turns	889-5023	P. 7
	Hawaiian Hemp Co	965-8600	P. 14
	Princess Kaiulani	885-2177	P. 13
Dance Studios	Dameron's Academy of Dance	322-8119	P. 20
General Stores	Aloha Village Store	322-9941	P. 20
	Kohala Health Food	889-0277	P. 8
	Naalehu Fruit Stand	929-9009	P. 6
	Pahoa Natural Groceries	965-8322	P. 14
Hardware	Pahoa Hardware	965-6459	P. 14
Ice Cream	Simply Natural	775-0119	P. 30
	Tropical Dreams	889-0505	P. 9
Gardens	Akatsuka Orchid Garden	967-8234	P. 15
Mac Nut Factory	Hawaii Mac Nut Plantation	775-7201	P. 27
Photo Developing	One Hour Moto Photo	329-2080	P. 5
Publications	Ka'u Landing	929-8130	P. 21
Real Estate	A Real Estate Concern	322-6119	P. 21
	Kohala Pacific Realty	889-5181	P. 9
Spa Service	Querencia Spa	328-2569	P. 23

THEATRES

Akebono Theatre	(see calendar)	965-9943	P. 14
Aloha Performing Arts Center	(see calendar)	322-9924	P. 20
Kilauea Theatre	(see calendar)	967-8222	
Kona Market Place Cinemas		329-4488	P. 5
People's Theater		775-0000	P. 30

COFFEE TIMES

For calendar inserts, historical comments
or

TO RESERVE ADVERTISING SPACE

Call or write the publisher (Les Drent) at:

(808) 326-7637

P.O. BOX 1092 Captain Cook, Hawaii 96704

Contributing Staff:

Guest Feature Writers:	Steve Graves
	Larry Douglas
Photography:	Michael Stewart
Production:	Gary De Pontes
	Rosie De Pontes

For Mainland Subscriptions:

Send \$25.00 for 12 months

Add \$5.00 if outside of USA

Mail to: Up Country Productions

P.O. Box 1092 Captain Cook, HI 96704

Read This



UP COUNTRY is not the manufacturer, or an agent of the manufacturer, for the goods and services being advertised herein and therefore makes NO EXPRESS OR IMPLIED WARRANTY OF ANY KIND WITH RESPECT TO THOSE GOODS AND SERVICES. The publisher will not be responsible for typographical or printing errors, but will reprint without charge that portion of the ad in which the error occurs. Publisher accepts no responsibility for errors resulting from telephone insertions.

Illustrations used herein are for design purposes only and do not necessarily depict the actual items offered by the advertisers.

This publication may not be reproduced in whole or in part without the prior written consent of UP COUNTRY and reserves the right to edit, revise or refuse any advertisement.

Coffee Times

HAWAII

WELCOME TO

THE BIG ISLAND

READ IT, DRINK IT, LIVE IT!

see page
21

expires
6/30/94



Buy 5 Pounds
of Kona Coffee
Get 1 FREE
at our Kainaliu Roasting
Room with this coupon

FREE T-SHIRT

With Island Air Tour
and this coupon

see page
35

326-2288

expires
6/30/94



**FREE WATER BOTTLE
WITH HISTORIC KEALAKEKUA
BAY BIKE ADVENTURE
KONA BIKE TOURS**

expires
6/30/94

329-2294



see page
36



FREE

ICE CREAM CONE
with purchase of deli
sandwich and this coupon

expires
6/30/94

see page
30

expires
6/30/94



**\$5.00 OFF
KAIYAK RENTAL
OR TOUR
326-2922**

see page
24

see page
25

Holuakoa Cafe

expires
6/30/94

*Free cup of 100% Kona Coffee
with this coupon*

322-CAFE located in Holualoa Town



**NAUTILUS II
SEMI SUBMERSIBLE**

\$5 Off Underwater Ride
with this coupon **326-2003**

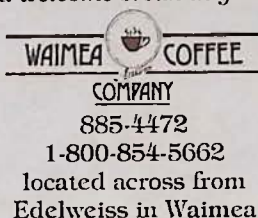
see page
5 expires
6/30/94

see page
13

for a welcome break in your day

expires
6/30/94

1.00 Off
one pound of
our Estate grown
pure Kona Coffees
or other 28 varieties



or
FREE
cup of our coffee
of the day
with coupon

\$10 OFF ADULT COUPLE FARE

expires
6/30/94

with this coupon

BODY GLOVE 326-7122



see page
5

**WAKEFIELD
GARDENS
& RESTAURANT**

See Page
23

2 for 1

Papaya Boat Special

filled with tuna salad & herb dressing
buy one get one free with this coupon

328-9930

expires
6/30/94

expires
6/30/94

329-2080

**ONE HOUR
MOTOPHOTO**

see page
5

FREE SET OF PRINTS

Receive a second set of prints for FREE with every
roll of film processed with this coupon

Kapaau Town
by the King's statue

889-5822

DON'S Family DELI

**10% OFF ALL LUNCH ORDERS
over \$10 with this coupon**

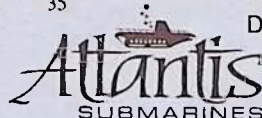
see page
9

expires
6/30/94

FREE ATLANTIS CAP

see page
35

with purchase of dive, one cap per coupon
Departing hourly from King Kamehameha's Kona
Beach Hotel on Alii Drive in Kailua-Kona



329-6626

expires
6/30/94

expires
6/30/94

99¢ Float reg. 1.99

custom made with any flavor of yogurt & your choice of soda

Waimea Center

885-2166

Kona Coast Shopping Center

329-0151

"TCBY"

The Country's Best Yogurt

Old Hawaiian Coffee

1870's Trees

Specializing only in 100% pure estate grown Kona Coffee

HIGH QUALITY MODERN COFFEE PULPING MILL

COME TOUR OUR HISTORIC COFFEE FARM

Take a **FREE** tour of our farm for the real story of how coffee is produced. We are located off Highway 11 in Honaunau, one tenth of a mile south of mile marker 105, just after the mailbox on the mauka side of the road.

"We'll take you from the tree to the roast."

Misha Sperka (farmer/owner)

84-5042 A Mamalahoa Hwy., Captain Cook, HI 96704

CERTIFIED ORGANIC
H.B.G.A.

(808) 328-2277



KONA MARKETPLACE

CINEMAS

Summer Blockbusters Coming Soon...

"The Flintstones" & "Lion King"

FREE 3 HOUR PARKING WITH VALIDATION
at the Kona Marketplace on Alii Drive, Kailua-Kona

showtime info. call 329-4488



NAUTILUS II
SEMI SUBMERSIBLE

HAWAII'S SUBMARINE EXPERIENCE



Enjoy Both Topside and Underwater Viewing in our Air-Conditioned, 58-Foot, 34-Passenger Coast Guard Approved Vessel. No Age Limit. Day and Night Cruises, Special Group Charters Available

INTRODUCTORY PRICES

ADULTS \$34.95

CHILDREN \$19.95

For reservations call or stop in at our shop. We are located across from the pier in Kailua-Kona

326-2003

**ONE HOUR
MOTOPHOTO™**

FREE SET OF PRINTS

with every roll of film developed

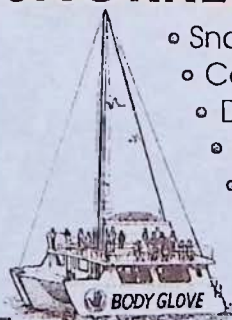
SEE OUR COUPON

329-2080 Kona Inn 322-8091 Keauhou

Located at: Kona Inn Shopping Village (1 hour) on Alii Drive
& at the Keauhou Shopping Village (overnight service)

BODY GLOVE

KONA'S PREMIUM SNORKEL CRUISE
SNORKEL • SCUBA • SNUBA



- Snorkel Gear & Instruction
- Continental Breakfast
- Deli Buffet Lunch
- Flotation Water Toys
- Full Service Bar (no host)
- Water Slide



326-7122

THE SEA PROVIDES

Most people have a vision of tropical islands as an easy place to live, where fruit hangs waiting to be picked, and fish jump into the fisherman's net. But islands, especially remote ones like those of the Hawaiian Archipelago, are difficult places to colonize. The number and kinds of species that can find their way across the ocean to such a distant location are few. Those few evolved into numerous new species, ones found nowhere else in the world, as they adapted to fill all the available ecological niches. Therefore, the islands had almost no edible plants and animals on them when they were first colonized by people.

The Polynesians who discovered Hawaii knew they had to make some changes if they were to live comfortably in this new place. Well aware of the danger of starvation, they brought food plants and livestock to create a self-renewing food supply. They introduced the coconut palm, breadfruit, and taro, as well as various other food plants. They brought dogs, chickens, and pigs. While these creatures were multiplying they had to rely on food they carried in their canoes, and the sea. It was enough.

The ocean was a great provider. Even after the introduced animals and plants had multiplied greatly, the sea remained an important resource to feed the people. By the time Captain Cook arrived, in the late 1700s, nearly two million people lived in Hawaii. That number is comparable to the population we have in the islands today, but where modern culture is dependent on tourism, and imported oil to sustain it, the

FOR BOTH ANCIENT AND MODERN HAWAIIANS

by steve graves

early Hawaiians were supported only by what they produced locally.

They had learned how to use the island's resources without using them up. The first Europeans who visited Hawaii had to admire the efficient irrigation system they employed, but they failed to see the significance of how they managed the resources from the ocean.

There were seasons when certain fish could not be taken from the sea. Fishing grounds were "kapu," placed off limits, at times to allow the stock of fish to replenish. Ponds were created along the shore to contain and cultivate fish. These fishponds were really fish farms. Some of them were only yards across, but others were huge with surface areas of a few square miles. Mostly they were used to raise mullet, a hardy fast-growing fish native to local waters.

Building a fishpond was often arduous work. A section of coast had to be selected where the bottom did not drop away too rapidly. Stones had to be gathered and carried out into the shallow area, building up a form much like a breakwater. The structure had to allow the sea and nutrients in without giving access to predator fish, or allowing the mullet to escape. Creating and maintaining the fishpond was backbreaking work, but worth the effort because it gave a consistent food supply.

Today we have discovered that creating a fish farm is a lot more difficult than making a pond at the ocean's edge and throwing in a bunch of fish. Food supply in the pond limits production, and disease can

cont. on page 26



Southernmost point in U.S.A.

Naalehu Fruit Stand

"A stop in good taste"

Tropical Fruit Breads ~ Cookies ~ Pies ~ Giant Sub Sandwiches ~ Pizzas
~ Garden Burgers ~ Hot Soups ~ Fresh Salads ~ Fresh Juices

It's the perfect rest stop on the way to Volcano!

Sundry and Souvenir items available

Free souvenir with purchase

P.O. Box 31 Naalehu, HI 96722 (808) 929-9009

Try Our Macadamia Nut Pie!



Open Daily at 9 am
on Hwy 11

Friendly North Kohala

Biking Adventures, Art Galleries,
Fine Dining, Cafes, Quaint Shops,
and even a local Ice Cream Factory



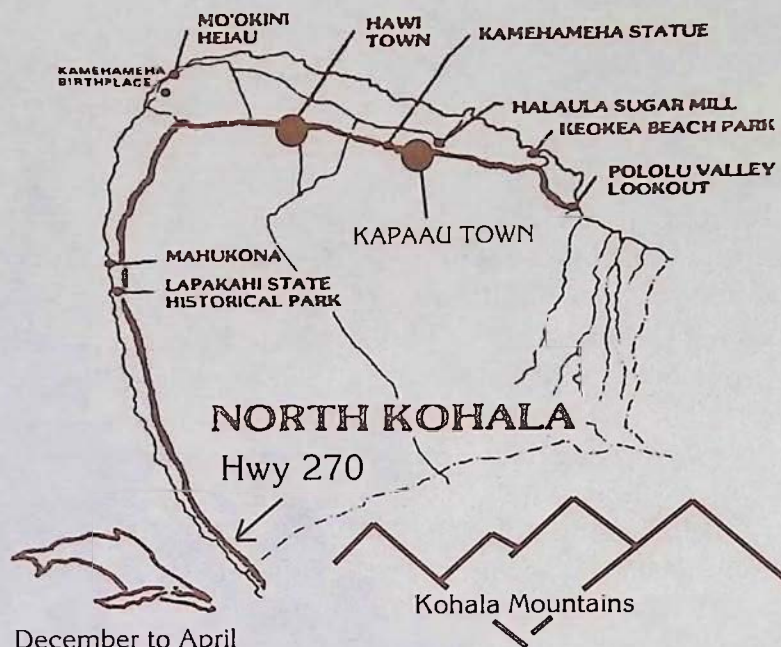
photo by Michael Stewart

Following highway 270 north visitors will encounter a landscape filled with historical landmarks that include the original statue of King Kamehameha, Kalahikiola Church, and Mo'okini Heiau which is regarded as the oldest pre-Western contact temple of worship. In the year 1758 King Kamehameha was believed to be born at Mo'okini.

Also to be found in the North Kohala region are the remnants of a once thriving sugar plantation industry of the 1880's

which is still visible in the many old storefronts of Hawi & Kapaau towns. These towns are now preserved by a new generation of Hawaii business which have their own distinct local offerings. In Hawi Town, a fun romantic & wild boutique called **As Hawi Turns** awaits those visitors seeking new clothing for the Hawaiian life-style and is not for the weak at the knees. The shop also carries handmade crafts by Big Island artists. Across the street is **Kohala Health Food** which carries a hearty selection of herbals, local fruits and various gift items. Massage therapy is also available.

Next to As Hawi Turns is **Kohala Pacific Realty**, where



December to April

visitors are welcome to stop in for free maps of the North Kohala region. On the other side of the street is the newly opened **Bamboo Restaurant**. Inside what was once the grand old Takata Store, built during the booming days of sugar cane, chef Michael Neff combines Pacific Rim dishes with flavors from as far off as Thailand to create his innovative style of cuisine. Farm fresh herbs and a next door bakery contributes a local flare to the food.

Just up the road a piece, smack dab in the middle of

continued on page 8



WELCOME to the newest addition to
Big Island Coffee Houses

KOHALA COFFEE MILL

Located in the restored 1932 Toyama
Building in downtown Hawi

*Enjoy espresso, cappuccino and a
full line of coffee drinks (all made with 100%
Kona coffee).*

*Relax, share wisdom, 'talk story'
and feel the pace of old Hawaii in a shop
that is decorated with scenes from early Ha-
waii coffee plantation days.*

*Also featured are fine pastries,
fresh donuts, coffee accessories and gifts.*

Open 7 Days A Week

As Hawi Turns

*Clothing for the
Hawaiian Lifestyle,
Local Crafts*

Located in downtown Hawi
across from Kohala Health
Food and Pumehana Flowers

889-5023



whether you choose...
HAND-TOSSED PIZZAS, FINE PASTAS
OR
SCRUMPTIOUS DESSERTS
you will always get...
AN ADVENTURE IN TASTE

CAFE

Pesto

KOHALA COAST

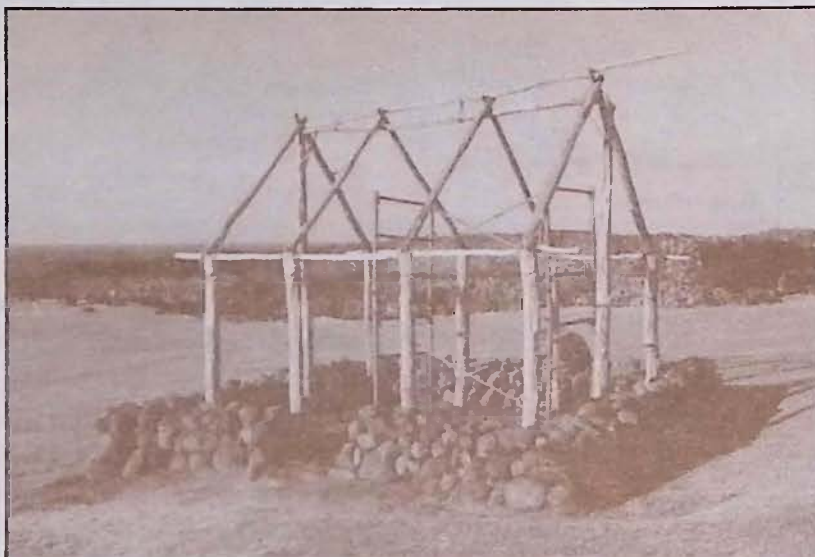
OPEN FOR LUNCH & DINNER

Kawaihae Center, On the Kohala Coast, 882-1071

continued from page 7

Kapaau Town is Hawaii's own local ice cream factory. **Tropical Dreams.** The owners, Lou and Deby Bleier, feature their fresh fruit sorbets and homemade ice creams and their original macadamia nut and honey butters in a parlor that fills one storefront in old Kapaau town. **FREE TASTES!!!** Across the street from the ice cream factory and also across from the King Kamehameha statue artist Gary Ackerman reflects on the landscape around him through his impressionistic style of painted art on display in **Ackerman Galleries.** Gary's combination of a free liquid style on canvas and varied techniques of painting allows him to successfully blend the colors of the natural environment. Both galleries also feature the works of other local artists.

If the drive up the Kohala coast and gallery hopping has got your appetite going at this point, maybe it's time to visit **Don's Deli** across from the King Kamehameha statue. Let Don prepare a sandwich from his large selection of cold cuts and cheeses or try one of his homemade vegetarian quiches or pastas. Don's Deli is a great place to relax before heading north to Pololu Valley.



The latest addition to downtown Hawi is the **Kohala Coffee Mill.** Owned and operated by Jon and Dixie Adams the historic Toyama building circa 1932 is now the home to a new coffee shop which will serve 100% Kona coffee at its espresso bar.

When you're done in town Hwy. 270 will lead you through North Kohala's fertile pasture lands, dense forests, and ultimately to Pololu Valley, which offers one of the best scenic view lookouts on the island. Along your way to Pololu there is **Wo On Gallery**, three miles past Kapaau town, which now occupies the old Wo On General Store, built by Chinese immigrants around 1920. The gallery hosts the works of only North Kohala artists, its youngest contributor being only 6 years old. Wearable art, sculptures, pottery, woodwork and watercolor paintings by Patrick Rankin can all be found at this local gallery.

If your interests lie in seeing all there is in this region **Chris' Bike Adventures** provides a "bike at your own pace" tour of the Kohala Mountains and its towns. The bike adventure is suited for all levels of riders and is comple-



Your Choice of 3 Biking Adventures:

The Kohala Mountain Adventure

This predominantly downhill bike trip, suited to all levels of riders boasts panoramic views of Mauna Kea, Mauna Loa and Maui's Haleakala while you pass through lush pasture lands and quaint North Kohala villages. The trip finishes at a remote beach for lunch after stopping for a view of majestic Pololu Valley.

The Mauna Loa Challenge

This 54 mile 12 hour adventure descends 11,000 ft. to sea level through rugged volcanic terrain, ranchland and dramatic coastal areas. Includes Kohala Mountain Adventure with breakfast and lunch included.

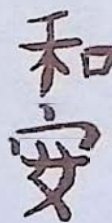
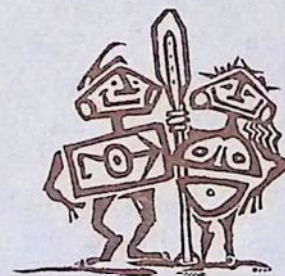
Mauna Kea/Waipio Off Roader!!!

326-4600

Fresh Tastes
"Old Hawaii" Feeling
in Hawi town

bamboo

LUNCH - TUES-SAT
DINNER - FRI & SAT
(808) 889-5555



**Wo On
Gallery**

featuring:
wood, watercolors,
wearable art,
and much more

Devoted to the artists
of North Kohala
and showing work by: Sandra
Gray, Jim Parker, Lesley Patton
and Patrick Rankin

.7 mile past the 25 mile marker
on 270 North
(808) 889-5002



**Kohala Health Food
& Nutrition Center**

OFFERING...
HERBALS, VITAMINS, HEALTH
BOOKS, GIFT ITEMS, JEWELRY,
CANDLES, LOCAL PRODUCE

MASSAGE THERAPY

Open Mon.-Sat.

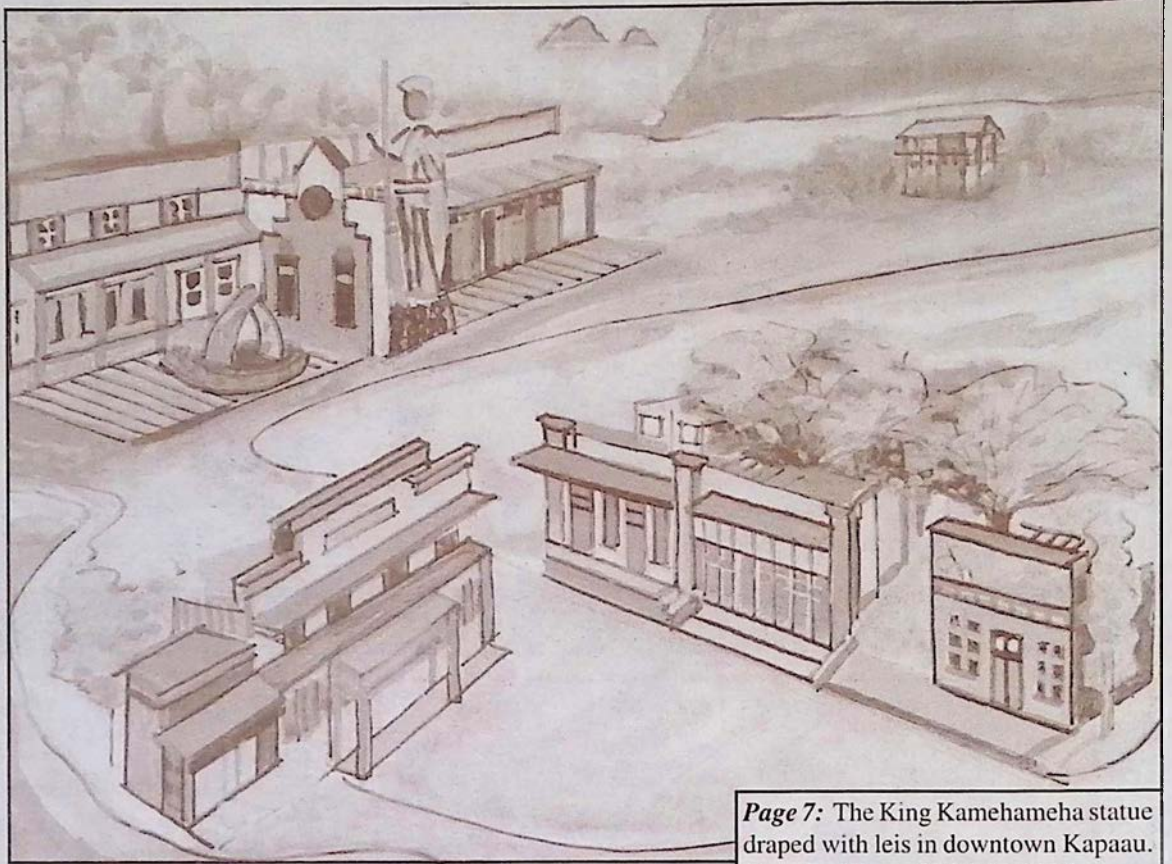
10:30 am- 6:30 pm

Located in Downtown Hawi

889-0277

mented with a breakfast consisting of fresh fruits and baked goodies. A picnic lunch at the beach follows the ride.

While driving along the coastline of North Kohala remember that if the skies are clear, you may be able to catch a view of the island of Maui looming from the other side of the Alenuihaha channel, which separates Maui from the Big Island. Between the months of December and April visitors are almost guaranteed a humpback whale sighting off the coast of North Kohala. This region of the Big Island is a particularly favorite spot for our migrating friends from the north. Perhaps the favorite way to cap off the afternoon in North Kohala is to stop in Kaiwihale and enjoy a Pacific Rim Italian meal at the original **Cafe Pesto** located in the Kaiwihale Shopping Center near the harbor. The reasonably priced meals are complimented by wonderful pastas, fresh salads and hand-tossed pizzas as well as an original selection of delicious desserts. If you are planning on visiting the town of Hilo Cafe Pesto can also be found in the old S. Hata Building near the bay front.



Page 7: The King Kamehameha statue draped with leis in downtown Kapaau.

Page 8: View of Mo'okini Heiau
Above: Impressionistic painting by Big Island artist Gary Ackerman of the North Kohala towns of Hawi and Kapaau.

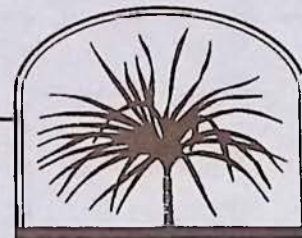
Come and enjoy this peaceful region of Hawaii. You will see and taste the wonders it has in store for you.

Ackerman
GALLERIES

ORIGINAL WORKS BY
ISLAND ARTISTS
ORIENTAL ANTIQUES
PRIMITIVE ARTIFACTS AND GIFTS

Open daily 9:30 to 5:30 p.m.
Both locations in Kapaau town Hwy. 270 North

(808) 889-5971



KOHALA
PACIFIC
REALTY

Specializing in
North Kohala
LAND & HOMES

Phone (808) 889-5181
Fax (808) 889-5161

Located in the restored Toyama Building
Downtown Hawi

P.O. Box 307 Kapaau, Hawaii 96755

DON'S Family DELI

New...
Fresh Fruit
Smoothies &
Carrot Juice

10% OFF
all lunch orders over \$10
see our coupon

sandwiches, lasagnes, quiches,
pastas and chicken enchiladas

CAPPUCCINO & ICE CREAM

CAFE LOCATED ACROSS FROM KING'S STATUE

MON-FRI 8-6 SAT/SUN 8-5
(808) 889-5822



*Tropical
Dreams*

Homemade Ice Cream
Sorbets & Frozen Yogurt

Used By Top Chefs of the Islands

Windows Cafe

"Every seat has a view"

Come have lunch, but leave room for dessert
889-0505

OPEN DAILY: Mon.-Sat. 11-5 • Sun. 1-5



100% PURE KONATM COFFEE

Hand Picked, Sun Dried and Truly Graded

Did you know that out of the **20 million pounds** of Kona Coffee bought and **consumed** every year under the name Kona only **2 million pounds** of that coffee is actually **grown** here in Kona? And the **frightening fact** of the matter is...that most Kona coffee drinkers around the world have no idea that what they're drinking is a coffee containing 90% of something other than Kona coffee. It's time for this deceptive labeling and misuse of the Kona name to end. In an attempt to preserve the coffee growing heritage



here in Kona and the gourmet reputation of our local coffee and to combat this widespread misrepresentation of the Kona name to sell counterfeit coffee we here at Coffee Times magazine unconditionally guarantee that the coffee you receive from us is farmer direct, contains only 100% Kona coffee and meets the State of Hawaii's highest grading standards. Enjoy the pure taste of the world's finest coffee and help preserve our local farm lands by buying only 100% Kona.

Our Mail Order Coffee Makes The Perfect Gift ~ Hotel Delivery Available ~ We Only Roast To Order!

ORDERING INFORMATION

Type	Roast	Lbs.	Total
_____	_____	_____	\$ _____
_____	_____	_____	\$ _____
_____	_____	_____	\$ _____
_____	_____	_____	\$ _____
_____	_____	_____	\$ _____
_____	_____	_____	\$ _____

Delivery Charges \$ _____

In U.S. please add \$3.50 for 1st pound & \$1.50 for each additional pound (Call for international fees)

Grand Total \$ _____

Please mail with check or money order to:
Coffee Times, P.O. Box 1092, Captain Cook, HI 96704

by American Express Credit Card

Am. Express Card #: _____

Exp. Date: ____ / ____ / ____ Name: _____

Signature: _____

Ship To: _____

Please allow up to 1 week for delivery

WE SHIP WORLD WIDE
1-800-750-KONA

In Hawaii Call: (808) 326-7637
P.O. Box 1092, Captain Cook, HI 96704

PEABERRY

The finest flavored coffee bean available (The result of single bean growth in the usual two bean coffee cherry)
16.95/lb. 79.95/5 lb. 149.95/10 lbs.

EXTRA FANCY

The highest quality, high elevation, large bean coffee
15.95/lb. 74.95/5 lbs. 139.95/10 lbs.

FANCY

Excellent quality, smaller bean, high cupping standard
13.95/lb. 64.95/5 lbs. 119.95/10 lbs.

PRIME

The choice bean of most specialty Kona coffee consumers.
10.95/lb. 49.95/5 lbs. 89.95/10 lbs.

FLAVORED KONA COFFEE

Vanilla, Macadamia Nut & Chocolate Macadamia Nut
15.95/lb.

(please specify medium, dark or espresso roast)

Coffee Times



Don't Leave Home Without It.

We welcome the
American Express Card

Waimea Country

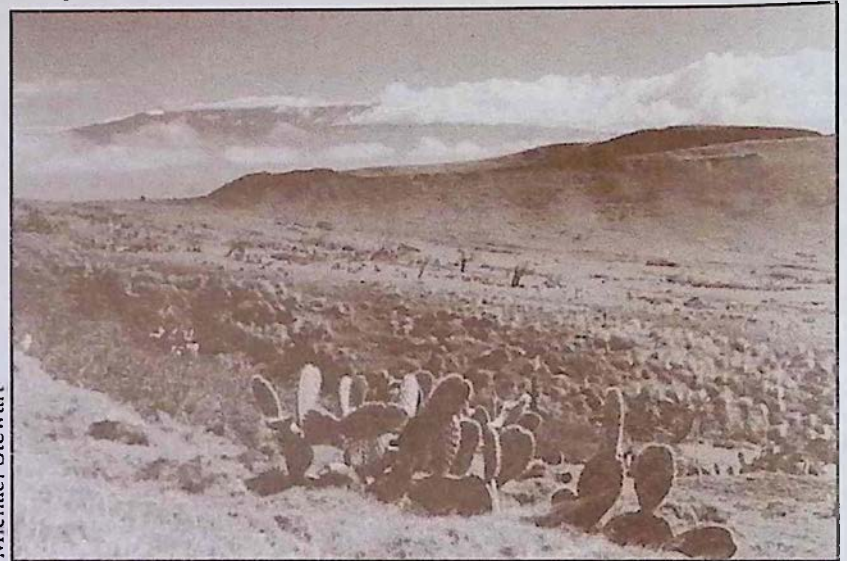
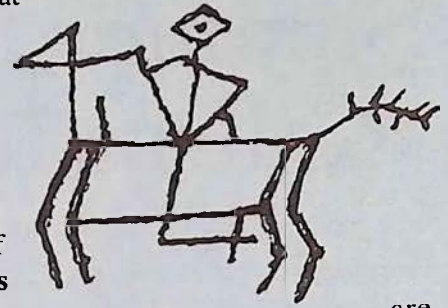
Between snow capped Mauna Kea and the Kohala mountains the green hillsides of North Kohala roll along under wispy white clouds, and afternoon rainbows frequently stream their way from the skies above Waimea. Inside this landscape herds of grazing cattle can be seen meandering their way through sloping pastures filled with cactus and dry underbrush as Hawaiian cowboys called paniolos still ride horseback and work the ranges.

Ranching began in this region of the Big Island after King Kamehameha appointed, in 1815, a young seaman named John Parker to hunt and shoot the herds of wild cattle whose population had grown uncontrollably since their introduction to Hawaii in 1793. Parker, who accomplished his mission, managed to domesticate a herd of his own before marrying a Hawaiian chiefess. The marriage helped Parker to acquire the land that would later be used to found his 250,000 acre ranch in 1847. Today's existence of Parker Ranch as one of the largest ranches in the United States gives the outsider an idea of the magnitude of its size.

Today, the town of Kamuela, more often referred to after its district name Waimea, is a town that still surrounds itself with a ranching lifestyle. The brightly colored Victorian houses and shops, tidy yards filled with flowers and skeleton remains of wagons and wheels gives visitors the opportunity to see yet another sphere of the diversity of cultures that exist in Hawaii. Beginning a tour of Kamuela

with a cup of java and a bite to eat at **The Waimea Coffee and Company** is a great place to start.

Make sure you don't miss stopping at **Cook's Discoveries** in Historic Spencer House and **Up Country Connection** Gallery of Art & Antiques as well as **Princess Kaiulani Fashions**. All three shops are located in Waimea Center. At Cook's Discoveries the warm aloha of a 150-year-old restored home creates a unique setting for Cook's Discov-



Michael Stewart

Paniolo Country

eries' one-of-a-kind collection of treasures made in Hawaii by Hawaii's proud people. Look for the Hawaiian flags across from Waimea McDonalds. The marushka hand-beaded jewelry is a must see at Up Country Connection, which is often the spot for some of Waimea's most spectacular art showings that feature the works of both local and visting artists. Princess Kaiulani, one of Hawaii's most beautiful Princesses, spent many of her favorite hours in Waimea. Now Princess Kaiulani Fashions in the Waimea Center (two doors from TCBY Yogurt) is a must for the discriminating shopper. Locally made designer muumuus and top national clothing brands provide a choice like no where else on the Big Island. And if women's apparel doesn't suit your fancy right now, see our 24K Hawaiian Gold coin jewelry or our unique gift items. You will also enjoy the antiques, from the turn of the century, that adorn this stylishly different boutique and the feel of beautiful Waimea, an early playground for Hawaii's royalty.

Waimea continued on page 12



WAIMEA COFFEE COMPANY

For a welcome break in your day
offering the best cappucino, gourmet treats & lunches

100% Pure Estate-Grown Kona Coffees

We mail-order anywhere!
1-800-854-5662 or 885-4472

In Waimea on Hwy 19
(across from Edelweiss Restaurant)



Discover the Best of Hawaii AT COOK'S DISCOVERIES

Open daily 10 a.m. to 6 p.m.

In Historic Spencer House circa 1850 - Waimea Center Next to McDonalds (Hwy 19)

(808) 885-3633

Discover proudly made in Hawai'i treasures including koa, sandalwood, coconut, mango & avocado boxes and bowls. Hawai'ian books and language tapes. Hawai'ian music and hula implements. Hawaiian quilts, collectibles and authentic reproductions of ancient palaoa, tapa beaters, fish hooks, squid lures. Island wear by Nike'u, Sig Zane and Island Cowboy. Woven lauhala. Feather, Ni'ihau, wiliwili, kukui and puakenikeni leis. Custom sterling jewelry by former Cartier goldsmith and Mings. Originals and prints by distinguished Island artists including Herb Kane, Harry Wishard, Kathy Long and Doug Po'olua Tolentino. Pure Organic Kona coffee, triple chocolate chunk cookies, fresh Waipi'o poi and poi cake, lemon-macadamia and guava-rum truffles. Even Poi Dog Biscuits! Many goodies under \$15! Remember... Buy Hawaii.



Summer Farm Fair Returns to Waimea

The Waimea Community is presenting a Summer Farm Fair which will include a salute to the cabbage growers of Waimea and titled this special event the First Annual "Kapiki Cabbage Festival". The fun-filled event will be held at Waimea Park on Saturday, July 2 and Sunday, July 3 from 10:00am to 4:00p.m. Highlights of the festival will include:

Hay Rides, Petting Zoo,
Kid's Corner, Food Booths, Arts & Crafts,
Fortune Telling, Farmer's Market,
Veggi-Lei Contest, Entertainers,
Llama Rides, Cow Chip Toss,
10K Mana Walk/Run, Science Exhibit,
Farm Products Display,
Cabbage Lawn Bowling, Farm Implements
Display

For more information
CALL: 885-6707!

THE COMMUNITY OF WAIMEA
PRESENTS

The 1994

WAIMEA
CABBAGE
FESTIVAL

WAIMEA KAPIKI

July 2-3 ~ Waimea Park ~ Waimea, Hawai'i
Sponsored by Waimea Main Street

4th Annual Celebration of Hawaii's Music and Culture
by Molly Turner

Waiki'i Music Fest

June 18th & 19th

Music, hula dancing, onolicious food, arts & crafts join in the fun, sun & good times in a celebration of Hawaiian culture at the 4th annual Waiki'i Music Festival this Father's Day weekend. Keikis will have fun playing and dad can relax while the whole family enjoys this special event. All proceeds benefit the Moku O' Hawai'i Canoe Racing Association, Hawai'i Association of Recording Artists (for music scholarships) and the Kona Athletic Club - which is working to preserve Hawaiian canoe paddling for years to come.

Hawaii's only two-day outdoor concert will be held June 18th and 19th, on the Waiki'i Ranch polo grounds, (6.6 miles up Saddle Road in up-country Kamuela). This is one of the most anticipated events of the year. DeWayne Sluss, Music Festival Promotions Director and, R. Keith Mc Guire, Musical Festival Illustrator, have combined their talents and time with numerous others to coordinate the biggest and best show yet, featuring 30 bands - 15 each day.

"It's more than a great music festival," says DeWayne. "We're going to have a great time for some great causes." 12 Big Island canoe clubs will sponsor all the food booths; proceeds will help the individual canoe clubs purchase new and vitally needed equipment. "The canoe clubs represent a piece of Hawaiian culture that was dying," states DeWayne. "Now it's re-surging!" Last year's donations were used to buy a new PA announcing system; this year they're looking at koa and fiberglass canoes for competition racing.

This year's show will not only feature the local Merry Monarch Winners (an annual international hula competition), but several more hula halaus who will grace the stage throughout each day. Also expected are many of Hawai'i's hottest recording artists and Hoku award winners. Olomana will be performing, as well as, Teresa Bright, Ho'Aikane, Hawaiian Style Band, Del Beazley, Kapena, Willy K, Ka'Au Crater Boys and many more! A special drawing be held to give one lucky person R. Keith McGuire's original watercolor illustration of the festival poster art, autographed by all the performers - a \$2500 value. Musical delights include slack key, Jawaiian, Hawaiian easy-listening and Paniolo/Country Western. 50 of the Big Island's finest crafts people will showcase their inspired art; and every morning, the event will be blessed by a Hawaiian Kahuna.

In 1993, over 10,000 people joined the fun, so get your tickets early. Tickets are \$15 in advance, \$20 at the gate, with no charge for keikis 12 years old and under. The festival is Father's Day weekend, June 18th and 19th, from 9am-5pm (gates open at 8am). Tickets are available at your favorite music outlets, including Mele Kai Music, Rhythm & Readings, Byrds Records and Byrd's Records & Audio Supply and MJS.

This isn't the first time DeWayne and Keith have collaborated.

Original Artwork
Bronze Sculpture, Ceramics,
Antiques

Upcountry
Connection
Gallery of Art & Antiques

Hand-Beaded Jewelry
Koa Furniture & Accent Pieces
Limited Edition Prints

Welcome Back Waiki'i Music Festival!
Stop by Upcountry on your way to the show.

A Bold, Eclectic Blend of Art Focused on The Big Island

Waimea Center ~ Kamuela, Hawaii ~ Open Mon. - Sat. 10 AM to 6 PM ~ 885-0623

Their partnership has spanned six years and many community projects. Keith is not only an incredibly gifted artist, but also teaches art to K-2 students at Kealakehe Elementary School. "Working with the little kids is the best," smiles Keith. "I have so much fun, the kids are my reward." He also volunteers his time and talent to the West Hawai'i Art Guild, West Hawai'i Dance Academy, Aloha Theater, the Waimea Community Theater and more. He is well known for his donations. "I will donate my work for most any educational program or project," he states. He also teaches life management skills for teenagers with the Center for Creative Directions.

DeWayne also owns and operates his own advertising, promotion and marketing business - Studio M Designs; volunteers for the Tong Wo Society (Hawai'i's first Chinese Social Club's restoration project), and is involved in the Hawai'i Preparatory Academy fundraiser cookbook "Kamakani Cooks" providing scholarships and money for up-and-coming students and programs. He's an active member and volunteer for the Kona Athletic Club - in fact it was four years ago when the Kona Athletic Club decided to hold a fund-raiser for paddling equipment that the idea for the music festival began growing.

The festival was the brainchild of Moki Paikuli, now the festival's Entertainment Coordinator. Many other friends and musicians were interested in giving their time to a good cause while having a lot of fun. Jerry Kremco donated the Waiki'i Ranch polo fields for the event, and his wife Melinda Carol, enthusiastically agreed to participate. Too many people to list volunteered their time, energy and kokua, turning the dream into a reality. "This pride in culture and community along with tremendous aloha spirit are helping to preserve the Hawaiian culture and history," says DeWayne.

DeWayne and Keith remind everyone to bring a ground blanket, hat and sunscreen, but no pets allowed. The Waiki'i Music Festival grounds are wheelchair friendly, and there is a Red Cross tent on the premises. Don't miss this fantastic weekend! Join the party and celebration, because after all, "You Lucky Live Hawai'i!" For any further information please contact, DeWayne Sluss at Studio M Design (808)329-5270.



Princess Kaiulani

FASHIONS WAIMEA

A Stylishly Unique Boutique

"We have a large selection of designer muumuus from size 4 to 26. Although the Victorian look of Princess Kaiulani is one of our primary lines, we also carry the bold look of Designs by Puamana and the new Elizabeth Kate Tahitian style muumuu.

Some of the other leading brand names that we carry are Alexander Brown, Zashi, Ann Ferriday, Northern Isles, Phoebe, Crazy Horse, Karen Kane, Back East, Jessica McClintock, Surya, Maggy London and more. Whether it's Ha-

waiian wear, a sweater, lingerie, jeans, a casual outfit or a dress for work, you will enjoy the latest in women's fashion at PRINCESS KAIULANI in Waimea. And when you buy... be prepared for many flattering compliments wherever you wear these clothes."

COME AND VISIT

Princess Kaiulani Fashions

in Waimea Center (near TCBY)

tel. 885-2177 (closed Sundays)

Waiki'i Music Festival

4TH. ANNUAL CELEBRATION OF HAWAII'S MUSIC & CULTURE

Saturday June 18th & Sunday June 19th

Gates open at 8:00AM, Musis starts at 10:00AM

Tickets: Advance \$15.00 per day. Gate \$20.00 per day.

Children under 12 FREE

Location: Waiki'i Ranch Polo Grounds, 6 Miles Up Saddle Rd.

Big Island of Hawaii

TICKET LOCATIONS

Mele Kai Music (Kona), * Rhythm & Reading (Waimea, Kona, Hilo), Byrds Records (Waimea), MJS (Hilo) & First Hawaiian Bank (All Big Island Branches)

PERFORMERS

Hoopii Brothers • Ho'Aikane •

Ka'au Crater Boys • Keaonaona • Lim Family • Sakiusa

Bulikocokoco • Pekelo • Willy K • Olomana • Melinda

Carroll & Cyril Pahinui • Kapena • Tropical Nights •

Hawaiian Time & many more to come.

CORPORATE SPONSORS

First Hawaiian Bank



MAUNA KEA BEACH HOTEL

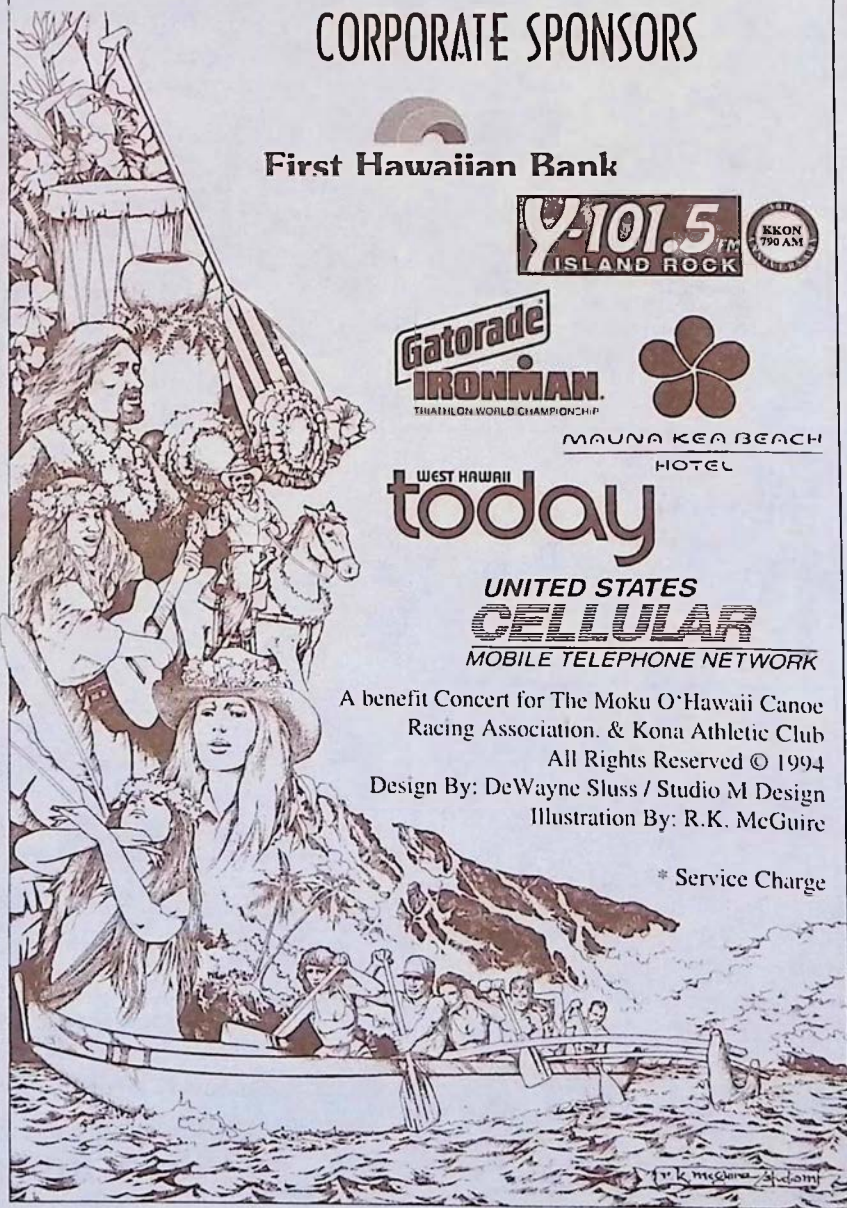
WEST HAWAII
today

UNITED STATES
CELLULAR
MOBILE TELEPHONE NETWORK

A benefit Concert for The Moku O'Hawaii Canoe Racing Association. & Kona Athletic Club
All Rights Reserved © 1994

Design By: DeWayne Sluss / Studio M Design
Illustration By: R.K. McGuire

* Service Charge



Historic Main St. Pahoa - Puna, Hawaii Quaint Shops, Local Food, Arts, Crafts, Theater

For visitors who want to experience the true feeling of old Hawaii. Pahoa village holds the key to this untouched past. First a rugged sawmill town then a sugar town and later a crossroad on the old railroad, Main Street Pahoa has maintained its western style storefronts and wood boardwalks in a charming turn of the century Victorian style.

Quaint shops from surf, to curio and restaurants span the flavors of the globe from Thailand, to Mexico and Italy and make Pahoa Village one of the most pleasurable and tasteful stops on the Big Island.

Call ahead to any of the friendly shops to see if there are any special events scheduled during your visit. Pahoa has the reputation of holding some lively and entertaining performances both on its Main Street and at the Akebono Theater. Hawaii's oldest theater.

Lodging in Pahoa is an alternative as well. The historic Village Inn, built in 1910, housed



Downtown Pahoa as it still looks today (circa 1917) *photo courtesy of the citizens of Pahoa*

some of Puna's earliest travellers and still operates today. The rooms are clean and spacious with vintage victorian decor. The Bamboo House, located above Pahoa Natural Groceries is also available for those visitors looking to spend the night.

The countryside surrounding Pahoa is filled with natural wonders like the Lava Tree State Park, steam vents, groves of papaya trees and black sand beaches along the rugged Puna coast. Visitors are warned however that a prolonged stay in this Aloha time capsule may make leaving a very difficult task.

NATURAL GROCERIES
PAHOA
Organic produce Health Foods
Open 9 - 9 p.m.
Sunday 9 - 6 p.m.

THE VILLAGE INN
HISTORIC PAHOA
BUILT IN 1910
P.O. BOX 1987 • PAHOA HAWAII 96778
(808) 965-6444
LODGING & HAWAIIANA
CURIO SHOP
\$39.95 double & up

FOUNDED 1917
AKEBONO THEATER
Local Performing Arts Center
Plays, Movies, Live Music
CALL (808) 965-9943
or
see *Coffee Times* Calendar for show schedule.

PAHOA HARDWARE
965-6459
OPEN 7 DAYS
CAMPING SUPPLIES
Plumbing, Electric, Nuts, Bolts, Paint Supplies, Garden & More
P.O. Box 967, Main St.
Pahoa, HI 96778

The Godmother 965-0055
Breakfast, Lunch & Dinner
8 a.m. to 11 p.m.
EVERYTHING HOMEMADE
Delicious authentic
New York-style Italian cuisine
Located in historic Pahoa Village

NATURAL EMPORIUM
PAHOA
Imports, Clothing, Jewelry, Gifts,
Open 10 am to 6 pm

HAWAIIAN HEMP COMPANY
HEMP FASHIONS
CLOTHING
FOOD
PAPER
LITERATURE
& ART
(808) 965-8600
Pahoa Village
Send \$2
For our catalog of products
P.O. Box 2056, Pahoa, HI 96778

LUQUIN'S
MEXICAN RESTAURANT
Chili Relleno, Carnitas,
Tamales & Taquitos
FREE CHIPS & SALSA
with Dinner
OPEN DAILY
11 a.m. to 9 p.m.
965-9990

Naung Mai
Thai Kitchen
"We serve Cheng Mai,
Bangkok & Phuket style cuisine."
Vegetarian Entrees offered
Mon. - Fri. 3 - 8:30pm
Sat. & Sun. 12 - 8:30pm
965-8186

PAPAYA'S PLANTATION
Elegant, Peaceful Lodgings, \$25.00 per person, 12 acres of Tropical Wilderness. Expansive Ocean Views. Full Kitchen
Jivan (808) 965-7119 Rosie

BAMBOO HOUSE
Unique Private Lodging
in Downtown Pahoa
Call
(808) 965-8322
For Information

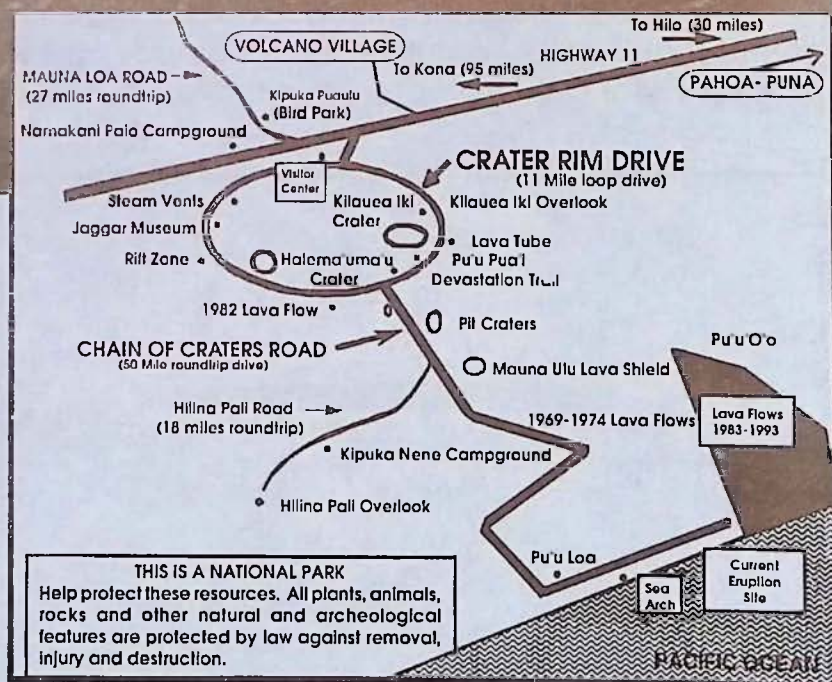
Volcano Region & National Park Information

photo by Michael Stewart

Volcanoes National Park has one entrance, off Route 11, 30 miles south from Hilo or 95 miles east from Kona. The park is open 24 hours a day all year round and requires a \$5.00 entrance fee per vehicle which is valid for 7 consecutive days. The hiker/bicyclist/bus passenger fee for people over 16 and under 62 is \$3.00.

When you enter the park during daytime hours you will receive a park brochure at the entrance station. If you enter the park after hours you may pick up the brochure at the Kilauea Visitor Center which is located a quarter mile from the entrance on Crater

cont. on pg. 16



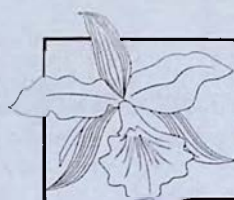
Twelve Romantic Rooms ~
Fabulous Fireside Dining Nightly 5:30 - 9:00 p.m.



KILAUEA LODGE

...only minutes from Volcanoes National Park

VOLCANO VILLAGE ~ HAWAII ISLAND ~ (808) 967-7366



Akatsuka Orchid
GARDENS

FREE GARDEN TOUR

Wander in awe through our covered garden of exotic orchids and island plants then help your self to a FREE orchid blossom. We feature Certified Hawaiian orchid plants, cut flowers & anthuriums. Take them home or we'll ship them for you!

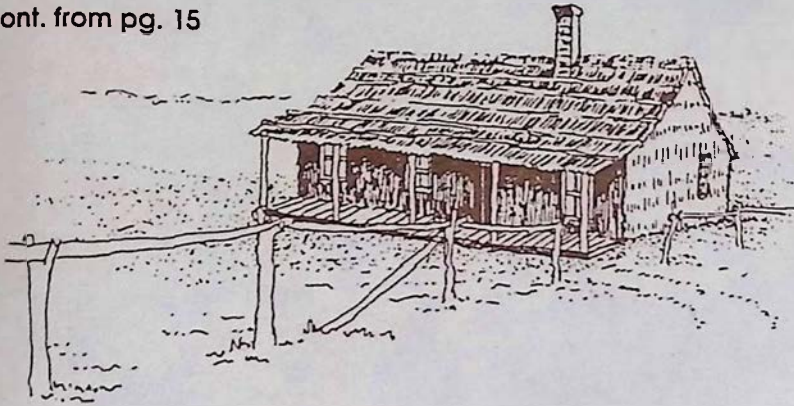
LOCATED ON HWY. 11

22 1/2 MILES FROM HILO

(808) 967-7660

P.O. Box 220, Volcano, HI 96785

cont. from pg. 15



The Original Volcano House,

Now the Volcano Art Center at Volcanoes National Park.

Rim Drive. The visitor center is open from 7:45 a.m. to 5:00 p.m. daily.

Visitors are encouraged to take the time to carefully read the park regulations and guidelines. The volcano fumes that exist in the park may create a health hazard for pregnant women, infants and people with heart or respiratory problems. People at risk should avoid stopping at the Sulphur Banks, Halema'uma'u Crater and other areas where volcanic fumes are present.

Overnight trips in the park require a backcountry permit that can be obtained at no charge at the Kilauea Visitor Center.

Once inside the park enjoy the 25-minute movie on eruptions shown hourly at the visitor's center. Other attractions are The Thomas A. Jaggar Museum three miles inside the park along Crater Rim Drive, The Volcano House, Thurston Lava Tube and scenic vistas. Depending on the timing of your visit you might have a chance to see the volcano erupting. A 45 minute drive to the end of Chain of Craters Road and a short hike will get you to the most recent lava flow area. The new coastline is unstable and can collapse into the sea at anytime without warning. Obey all park signs. Do not enter any closed areas. The park also offers many other hiking opportunities which are mapped out in the park brochure.

Before leaving you won't want to miss The Volcano Art Center, adjacent to the visitor center. The Art Center hosts the works of some of Hawaii's finest artists. The Center is also responsible for many of the art, cultural, environmental, and community activities happening in the park. The dates and times of these activities are listed in the Coffee Times calendar.

A reminder to drive slowly and carefully while touring the park as it will help to protect Hawaii's endangered state bird, the nene.

Lodging, gas, camping supplies and dining all can be found in Volcano Village just a short drive from



RETREAT...RELAX...RELIVE...

HAWAII

P.O. Box 758 ~ Volcano, Hawai'i 96785

808-967-7986 ~ 1-800-455-3803

MOLTEN IMAGES

Professional Island Photography
by Michael T. Stewart

Weddings, Portfolios, On Site Availability,
Fine Art Prints

(808) 334-3270

Aloha Volcano Vacation Rentals

Modest to Luxurious
Accommodations,
Romantic Hideaways
for Two or Homes with
Great Family Value.

(808) 967-7683
1-800-845-LAVA

VOLCANO ART CENTER

Hawaii Volcanoes National Park
Gallery open daily 9 a.m. to 5 p.m.

JUNE EXHIBIT: "Plantation Life"
Hand-tinted photographs by Georgia Satoris

FREE HULA PERFORMANCE
Saturday, June 18, noon, hula platform, HVNP

See Coffee Times Calendar for classes and workshops.

The Volcano Art Center is a nonprofit, tax-exempt educational organization. Call 967-8222 for information.

CARSON'S VOLCANO COTTAGE

Volcano's most private and inviting B&B



Experience The True Fantasy
Of Hawaii ~ Forested Garden
setting ~ Separate Guest
Rooms & Cottages ~ Hot Tub ~
Wood Burning Stove ~
Amenities Without The Price
(808) 967-7683
1-800-845-LAVA



*Print of the Volcanoes by M. Dumont D'urville circa 1836
from Voyage Pittoresque Autour Du Monde*

the park. When in the village stop by Wood Carver's Corner. This cozy shop is filled with wood arts from around the world including Native American and Hawaiian crafts.

Because of the remote location of the volcano, the numerous Bed & Breakfasts existing in the region are a favorite choice among visitors staying in Volcano. A complete listing of Volcano B & B's can be seen on page 33 of Coffee Times. A few particular favorites are My Island Bed and Breakfast, Carson's Volcano Cottages, Chalet Kilauea and Hale Ohia Cottages. If you are looking for seclusion, Carson's Volcano Cottages are tucked away in the region's rainforest and offers guests the most in privacy as well as a hot tub and even wood burning stoves to keep

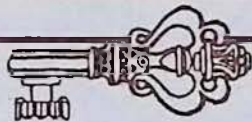
Woodcarver's Corner

Wood Arts, Hawaiian & Native American, Crafts, Golf Trophies, Gifts and more...

Located at corner of Haunani Rd. & Old Volcano Hwy.,
Wed. - Sun. 10-5, (Closed Mon. & Tue.)
Box 867, Volcano, HI 96785, 985-8518



No Booking Fee



967-7244

Volcano Reservations

SELECT STATE WIDE ACCOMMODATIONS

Bed & Breakfasts ~ Cottages ~ Vacation Homes ~ Condos
Your Key To Hospitality
BUDGET TO LUXURY ~ GREAT VALUE

Chalet Kilauea - The Inn at Volcano



EXPLORE TREASURES FROM AROUND THE WORLD

Unique Theme Rooms ~ TreeHouse Suite ~ Vacation Homes
Jacuzzi ~ Fireplace ~ Library ~ Garden

Gourmet Breakfasts

967-7786

Afternoon Tea

you warm on those cool volcano nights. Chalet Kilauea, The Inn at Volcano, features rooms decorated with art from around the world and even a treehouse suite, a unique alternative for couples looking for that romantic getaway. My Island Bed and Breakfast, located on a five acre botanical estate, is an 1886 missionary home offering guests the choice of rooms in either the main house or garden apartments. Located off of Hwy. 11 are the private Hale Ohia Cottages surrounded by bonsai-style gardens and moss covered grounds. The suites and cottages are both spacious and comfortably outfitted.

Perhaps one of the most memorable dining experiences on the Big Island can be found at Kilauea Lodge, which features continental cuisine beside the historic fireplace of friendship. The mountain lodge also hosts twelve romantic rooms for overnight visitors. One spectacular stop you do not want to miss when you are in the volcano region is Akatsuka Orchid Garden. Seeing is believing when you arrive at this exotic and tropical garden. Visitors are welcome to free tours and complimentary orchids during their visit.

For Park Information Call: (808) 967-7311

For Eruption Update Call: (808) 967-7977

Ohi'a Gardens

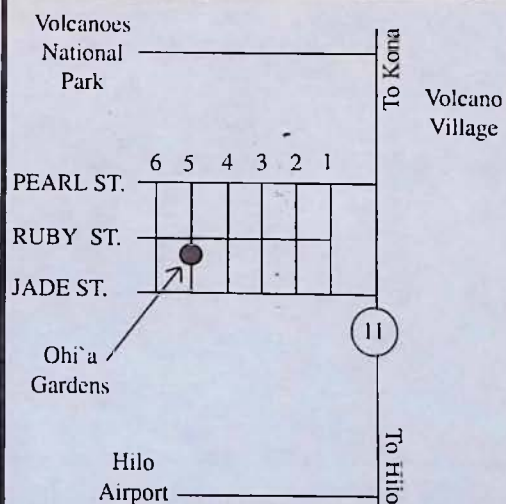
Bed & Breakfast

Your home away from home

Special Rates for Groups or
Golfing Parties.

A Kitchenette and a Barbecue
Grill is available and restaurant
facilities are located close by.

GRAND OPENING
APRIL 1, 1994

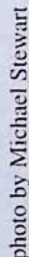
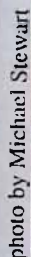


RATES:

\$55.00 Dbl. Occupancy
\$40.00 Single
\$10.00 Per Child
\$20.00 Extra Adult

Call or Write for
Reservations
1-800-985-7051

11-3827 Fifth St.
P.O. Box 661
Volcano, Hawaii 96785
Charles Mohica (Mgr.)



Left: Makalawena Beach along the Kohala Coast Center: Old Truck North of Hilo Right:

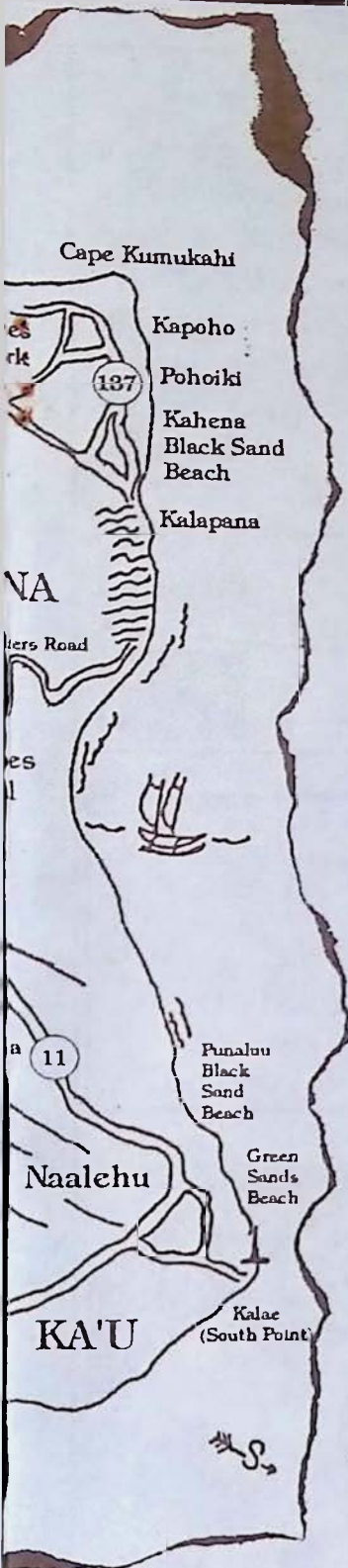


photo by Michael Stewart



Kohala Coast Petroglyph



photo by Michael Stewart

East Hawaii Waterfall

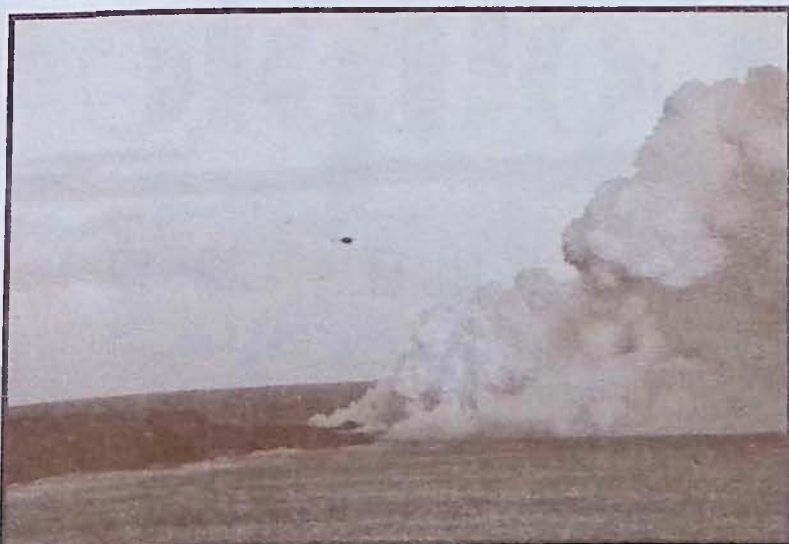


photo by Michael Stewart

Lava Entering the Sea at Volcanoes Natl. Park

What to see:



HISTORIC HILO

Early 20th century Hawaii happily lives on in the storefronts and buildings of this yesterday town. Outside the town are magnificent Akaka Falls and Hawaii Tropical Botanical Garden to the north.



VOLCANOES NATIONAL PARK

Home of Pele, the Hawaiian goddess of fire. A region of unique features, volcanoes and a diverse biosphere. See page 6 of Coffee Times for volcano information.



CAPTAIN COOK MONUMENT

The spot in Kealahou Bay where English navigator, Captain James Cook was killed in 1779.



PU'UHONUA O HONAUNAU

An ancient Hawaiian village that is now a national park. Located in south Kona. Stop and see the Painted Church along the way on Hwy 160.



WAIPIO VALLEY LOOKOUT

Spectacular views into a lush valley of waterfalls, rivers and cascading cliffs. (4WD, horse, or a hike are necessary for access into the valley)



WAIMEA COUNTRY

In the heart of Big Island ranch country this western style town sits at the base of Mauna Kea.



AKAKA & RAINBOW FALLS

Two separate waterfalls northwest of Hilo. Easily accessed by car and short enjoyable paved hikes.



HEIAUS & PETROGLYPHS

Both can be found on the Kohala coast. The petroglyphs can be seen by following a path on top of the lava rocks at the Royal Waikoloan Resort.



POLOLU VALLEY LOOKOUT

A northern valley lookout. The road there will take you through friendly N. Kohala towns and perhaps a view of Hawaii's neighboring islands.



PUNA DISTRICT

Hosts the rustic western style town of Pahoa in addition to wild roadside orchids, steam vents, Lava Trees State Park and black sand beaches.



SOUTH POINT U.S.A.

The southern most point in the U.S. It boasts a magnificent ocean side drive through rolling green hillsides filled with Holstein cows grazing above a coast line of rugged cliffs and crashing waves.

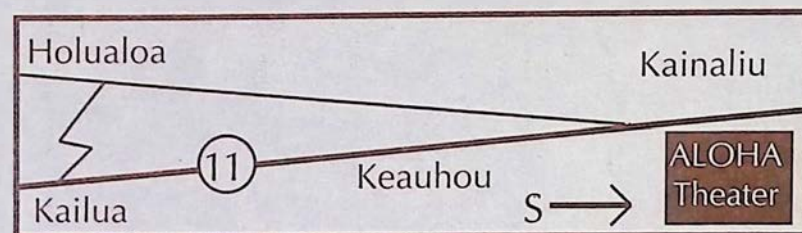
ALOHA THEATER COMPLEX IN KAINALIU



Located just a short drive south on highway 11 from Kailua-Town, central to Kona's coffee country, is the historic

Aloha Theater Complex built in 1932. Local theater performances produced by the Aloha Performing Arts Center and various other local community groups are on stage every month at the complex that also hosts a Cafe, Village Store and Dance Academy. At the cafe visitors can enjoy breakfast, lunch and dinner, which including many vegetarian specialties. A second floor bake shop turns out breads, cakes and cookies that fill the glass case just inside the front door to the theater.

Relax on the outside lanai while you sip a cup of pure Kona coffee, something very few restaurants on the Big Island actually serve. Wander next door to the Village Store and find Hawaiian gifts, fresh fruits and always a local tune playing through the speakers. To round off this Aloha experience, the local Academy of Dance run by Reni Damron is always alive with people of all ages practicing tap, ballet or jazz in the hall located at the north end of the complex.



BALLET

TAP

JAZZ



Damron's
ACADEMY
of DANCE



ALL AGES

(808) 322-8119

P.O. Box 325, Kealahou, HI 96750



8 a.m. to 6 p.m.
Monday - Saturday
8 a.m. to 8 p.m. Fri.
9 a.m. to 4 p.m. Sun.
322-9941

Great gifts for All Occasions

Groceries, organic foods, fruit (fresh & dried)
vitamins, teas, coffees, island music tapes



"DELICIOUS HOMEMADE GOODNESS"

Open for breakfast, lunch & dinner

8 a.m. to 8 p.m. Mon. - Sat

Sunday Brunch 9 a.m. to 2 p.m.

THE BEST BURGERS IN KONA

MEXICAN SPECIALTIES

FRESH BAKED BREADS, CAKES, COOKIES...

ESPRESSO BAR

INTERNATIONAL BEER & WINE SELECTION

IN THE HEART OF KONA COFFEE COUNTRY

322-3383



The Aloha Performing Arts Center presents the
Aloha Community Players production of

Neil Simon's
New Female Version

A Hilarious
New Comedy

The
Odd Couple

Directed by
Gloria Blum

June 3, 4, 5* 9* 10, 11, 12* 16* 17, 18

All evening performances at 8:00 p.m. * Denotes 4:00 p.m. Sunday Matinee
* Thursday Discount Nights - All Seats \$6.00

General Admission - \$8.00 • Students & Seniors - \$6.00

Tickets: Skye's Hallmark Shop, Keauhou Village Book Shop, Aloha Village Store & at the Door

ALOHA THEATRE

KAINALIU, HAWAII 322-9924

By special arrangement with Samuel French, Inc. Supported in part by a grant from the State Foundation on Culture and the Arts

Cast announced for the Aloha Theater's *Odd Couple*

In 1986 Neil Simon rewrote his successful Broadway hit *The Odd Couple* for women, and Aloha Community Players' director Gloria Blum has announced the names of the cast chosen for this hilarious comedy, soon to be presented at the Aloha Theatre. "This production will feature some of Kona's most popular performers along with several exciting new faces," said Gloria. "It is very exciting for me to be able to work with these talented women and men."

Gayle Keller plays the maddeningly meticulous Florence Unger, who moves in with the messy and crude Olive Madison played by Toni Mott. Kona audiences will recall Gayle as Anna in *The King and I*, and Toni as Anas in *Jesus Christ Superstar*. Their lifelong girlfriends and co-comediennes include Vickie Higginson, seen most recently as Miss Adelaide in *Guys & Dolls*, as Sylvie; Julie Russell (recently arrived from the Grand Canyon Community Players) as Mickey the Cop; Robin Hurlbut as the sexy Renee; and Holly Carr as the air-head Vera. Bob Haber (Bilbo Baggins in *The Hobbit*) and Victor Pisauro (the outrageous Herod in *Jesus Christ Superstar*) will portray the very funny Spanish brothers Manolo and Jesus Costazucla.

Neil Simon's original *The Odd Couple* was a Broadway hit in 1968. It portrayed two recently divorced/separated men (played by Jack Lemmon and Walter Matthau) who brought the pattern of their own disastrous marriages into their new relationship as apartment mates.

Reruns of the TV series starring Tony Randall and Jack Klugman are still seen nightly. Simon rewrote the play as a female version starring Sally Struthers and Rita Moreno in 1986.

Neil Simon's plays have always been extremely popular in Kona, with *Barefoot in the Park*, *Brighton Beach Memoirs* and *Rumors* having been presented at the Aloha Theatre in recent years.

The Odd Couple plays three weekends at the Aloha Theatre in Kainaliu on June 3, 4, 5; 9, 10, 11, 12 and 16, 17 and 18, which includes 8 pm evening performances and 4 pm Sunday matinees.

The production team includes Robin Hurlbut as Assistant Director, Jaque and Dawn Ray as co-Stage Managers, and Karen Broennimann as Property Mistress. David Fero who designed the set for *Cheaper by the Dozen* is again Set Designer and Dresser. Eugene Gall who has constructed many a set for APAC is working his magic once more. Donald Gross is designing the lighting and Brent Gantenbein will be lighting engineer. And besides everything else she does so well, Sonja Reinhardt is coordinating the costuming, hair and makeup.

There is still a need for persons to work behind the scenes as production staff volunteers (scenery construction, painting, P.R., ushers, etc.). Call 322-9924 if you would like to help.

KEEP KONA COUNTRY
BUY A FARM!!!
ARNOLD RABIN (R) (GRI)
PRINCIPAL BROKER
A REAL ESTATE CONCERN-HAWAII
(808) 322-3677 / FAX: (808) 322-6119
P.O. BOX 766, CAPT. COOK, HI 96704 / (RES) 328-2386
SERVING THE KONA COFFEE
COMMUNITY SINCE 1980

From the Southernmost District of Hawai'i Island

KA'U LANDING
(808) 928-6449 P.O. Box 160, Pahala, Hawai'i 96777

In-depth and ongoing coverage of the land, the people and the issues that affect the present and the future of our Big Island Communities.

☐ 1 year (12 issues) \$12 ☐ Sample Copy \$1.50

BAD ASS COFFEE CO.
Kona, Hawaii

ROASTED FRESH DAILY

See Our Coupon for a
FREE POUND OF COFFEE

CAFE LOCATIONS:

The Original Bad Ass Coffee Co., 322-9196
Kainaliu Next to Crystal Star Gallery
The Bad Ass Coffee Co. 326-4637
Kailua Waterfront Row on Alii Drive
The Bad Ass Coffee Co. Kailua Warehouse 329-8871
Next to Giuseppe's Italian Cafe on Alii Drive
The Bad Ass Coffee Shack of Kaiwaha 882-7019
Above Cafe Pesto in Kaiwaha Shopping Center
Bad Ass Coffee Shop, 875-8558
1280 S. Kihei, Maui

INDEPENDENT DISTRIBUTORS

Hawaii Mac Nut Plantation Inc., 775-7201 (Honoka'a),
Long's Drugs (In Hilo & Kona)
Keep In Touch, 885-7191 (Parker Ranch Shopping Center)
Uncle Billy's Hilo Bay Hotel, 322-2825 (Hilo)

The Bad Ass Coffee Company
1-800-338-7139 (808) 322-2825

SOUTH KONA

Kona Coffee Farms, Kealahakua Bay, Captain Cook Monument, Pu'uhonua O Honaunau, The Painted Church

There perhaps is no other region on the Big Island shrouded in more history than the district of South Kona. Whether it be the origins of Kona coffee, the ancient Hawaiian village setting of *Pu'uhonua O Honaunau* (Place of Refuge) National Park, or the Painted Church nestled along the hillside overlooking Kealahakua Bay, the spot where the famous English explorer Captain Cook met his fate in 1779. South Kona will keep the historically minded visitor busy weaving their way through its network of mountain roads.

The best way to see this region is to take a ride on Scott Mori's guided tour of historic Kealahakua Bay. **Kona Bike Tours** (see back cover of *Coffee Times*) begins its trip at 1,500 feet and descends into the region stopping at The Painted Church, a Kona coffee mill, Kealahakua Bay, and *Pu'uhonua O Honaunau*. The bike tour is suited for all levels of riders and remains personal with a limit of four riders.

High on the slopes and off Hwy. 160 is The Painted Church, where sometime between 1899 and 1904, Father John Velge, a Catholic missionary from Belgium painted images on the interior walls of the church depicting the biblical scenes of heaven and hell. Near The Painted Church is the rural setting of **Wakefield Gardens Restaurant**. Owner Arlene Wakefield serves lunch daily at her botanical garden setting in Honaunau. Look for her famous Papaya Boat with tuna salad, it has become a favorite dish among the local popu-

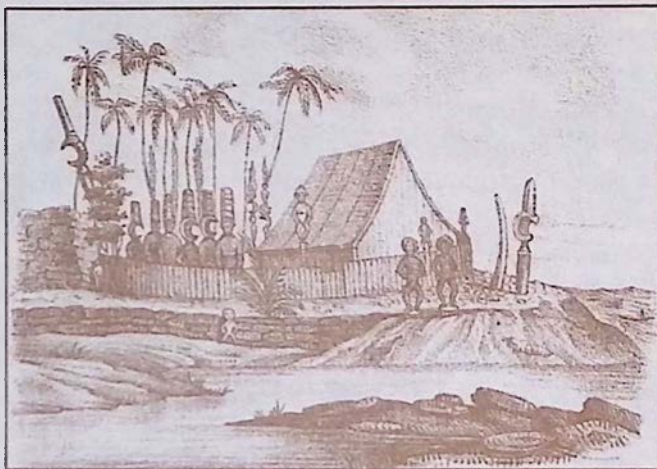
lation and continues to thrill visiting diners. The restaurant is open for lunch only and includes a free tour of the botanical gardens surrounding the estate.

If your time in South Kona allows for it leave room in your stay for the "Narcissus" at therapist Sheila Pattison's **Querencia Spa**. Her massage treatment includes a jacuzzi, herbal facial, full body massage, beverages, light pupus and a catered gourmet dinner in the Spa's Tea Room. Custom catering is available to meet all your needs.

From the wonders of The Painted Church, Middle Keel road empties out onto Napoopoo Road before passing **Bay View Farms and**

Mill, family owned and operated by New Hampshire native Andy Roy and his wife Rosalyn. Over the distant hum of pulping and grading machines the sweet and damp smell of freshly pulped coffee cherry fills the air during the fall and winter coffee season. An extensive system of outlying drying decks and groves of coffee trees cover the landscape in front of the now visible cliffs of Kealahakua Bay, which in the hazy distance plummet their way seaward. Bay View Farms will soon be adding a rural coffee cafe to their operation, where guests will have the opportunity to sip 100% pure Kona coffee.

At the bottom of Napoopoo Road is Hikiau Heiau at Kealahakua Bay, and a white stone monument across the bay that marks the spot where Captain Cook was killed in 1779. The story behind Cook's death was that it was the result of a failed



Early engraving of Pu'uhonua O Honaunau, taken from Voyage Pittoresque Autour Du Monde, circa 1836



HO'ONANEA

*A Unique Experience in Vacation
or Business Travel Accommodations*

"One place you will never forget" Ho'onanea is a private estate overlooking Kealahakua Bay in Captain Cook. There are two private apartments each with complete facilities, tile bath, magnificent art and koa furniture by Terry Benson, and large outside tile lanais overlooking the gardens and the ocean. Outside, beauty is everywhere - a full acre of manicured lawns, flower gardens, flowering trees, ponds, two heated swimming pools with waterfall between, spa, barbecue area, etc.

Truly, there is nothing like it in Hawaii. Rates are \$80 daily \$500 weekly, \$1,800 monthly until December 15th. Rates are 25% higher in winter. Special rates for visiting families of kama'ainas. Also available for very special catered functions. You are welcome to preview for your next visit.

Call
(808) 328-9445

David & Mary
Randall
(Hosts)





Looking north across the South Kona coffee country into Kealahou Bay, circa 1930, courtesy of Kona Historical Society

attempt by Cook and his soldiers to take the high chief Kalaniopuu hostage in return for a cutter that was stolen the night before. Cook, who had come south to the Hawaiian Islands seeking shelter for the winter months, was in search of a northwest passage to England.

A lower coastal road connects Kealahou Bay to Pu'uhoanua O Honaunau (Place of Refuge) National Park. In the early years of Hawaiian civilization it was the Place of Refuge that people who broke *kapu* (sacred laws) would attempt to flee. If the *kapu* breaker could reach this sanctuary his life would be spared. Some of these *kapu* that governed the common people included not being allowed to walk in the footsteps of the chiefs or to touch their possessions. Other rules forbade commoners from eating foods reserved for offering to the gods, and women were not allowed to eat with the men. The gathering of wood, seasons for fishing and the taking of animals as well as the *hula* were also controlled under the *kapu* system. Other features at the park are

lokos (ancient fish ponds), *hales* (thatched roof structures that served as homes), *heiaus* and ancient rock walls. Visitors are usually provided with live demonstrations of ancient Hawaiian crafts such as the building of canoes and tikis at the park.

Back out on Hwy. 11 the **Cottage Gallery** hosts the works of area artists with many affordable pieces being offered as the perfect mementos of your stay in South Kona.

If you are looking for exclusive and private accommodations in this region of South Kona, **Ho'onanea** and **Adrienne's Bed & Breakfast** are prepared to accommodate your lodging needs. Ho'onanea, owned and operated by your hosts David and Mary Randall, allows guests a unique experience in business or vacation accommodations. The home is decorated in koa furniture, includes private baths, and lanais that overlook tropical gardens and spectacular Kealahou Bay. Adrienne's Bed & Breakfast serves continental breakfasts on a lanai that boasts ocean views. Private baths/entrances, hot tub and rooms with king and queen size beds in this custom cedar home rounds off your stay.



Adrienne's Bed & Breakfast

18 miles south of Kailua-Kona
Country Setting - Ocean View Lanais

Rooms from \$40-\$70, all with private baths + extras
Continental Breakfast Served on Lanai
Covered Hot Tub Area for Sunset Viewing

Call Today: (808) or 1-800-328-9726

Write: 85-4577 Mamalahoa Hwy., #8E,
Captain Cook, HI 96704 or Fax: (808) 328-9787



Featuring:

"The Narcissus"

A Very Special Private Affair

A romantic candlelight massage for couples followed by a catered supper and pupus.

Insurance & Work Comp.
Accepted

mat. 2225 mat. 3053

Massage, Body Wraps &
Pacs, Injury Therapy,
Jacuzzi & Hydrotherapy

Located near the Place of Refuge
in Honaunau

(808) 328-2569



Querencia Spa Tea Room



An artists cooperative located in the headmaster's quarters of an old Japanese schoolhouse in Honaunau, this site offers a glance into older and quieter Hawaii. A wonderful place to view fine, affordable local art.

Find us at SKEA on Hwy. 11 between mile markers 106-105 on the makai (ocean) side of the road.

Cottage Gallery

at SKEA

Paintings
Sculpture
Pottery

Stained Glass

Jewelry

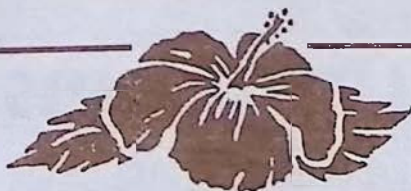
Quilting

Wearable Art

Candles & Woodwork

328-9392

OPEN Tues-Sat 9am-5pm



FREE BOTANICAL GARDEN TOUR

Buy one get one Free Papaya Boat filled
w/ Tuna Salad & Herb Dressing!!!
see our coupon

Homemade sandwiches, soups, full
vegetarian fare, Kona Coffee, fresh baked pies

OPEN 11 am to 3 pm (7 days a week)

(808) 328-9930 P.O. Box 18 Honaunau, HI 96726

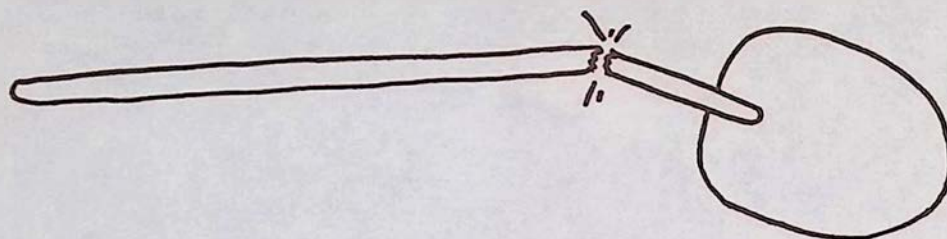
A TRULY RURAL DINING EXPERIENCE



Located in the heart of coffee country, Hwy 11 south to
Hwy 160 (Painted Church & City of Refuge)

Law of the splintered paddle

King Kamehameha Day June 11th, 1994



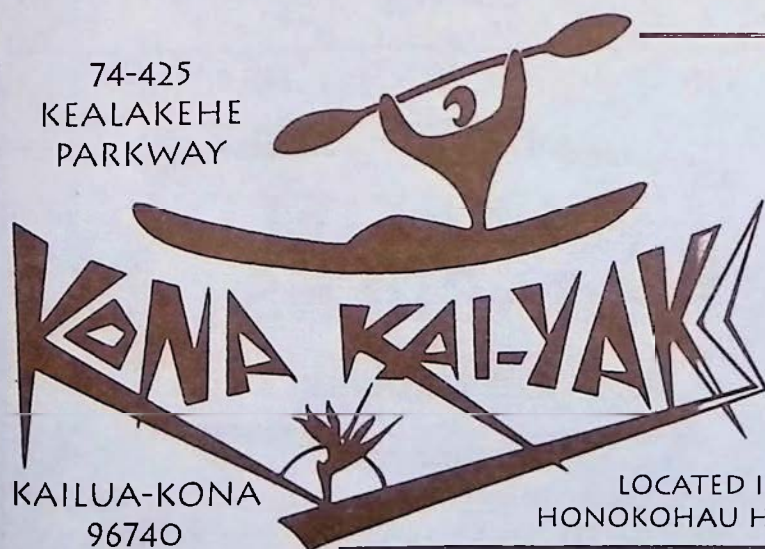
King Kamehameha I and his men landed at a village in Puna. The frightened villagers attacked. One villager hit Kamehameha's head, breaking a paddle. Later Kamehameha came to rule Hawaii. At that time his men wanted punishment for the Puna villagers. Instead, the King forgave all with the "law of the Mamalahoe" or splintered paddle - which was safe passage on roads for all. Thus, our present Mamalahoa Highway!

HIS DECREE:

"O my people, Honor thy God. Indeed respect men great and small. Where old men, old women, and children go and lie down on the roadside, let no man cause harm. Disobey and die."

Kamehameha I, the Great!

notes by Hal Hisa Yamoto



RENTALS/SALES/TOURS

Custom Kayak Tours Around The Big Island, Day & Overnight Trips To Remote Island Destinations.

all levels

(2 hour introductions, half or full day trips)

(808) 326-2922

Holualoa, Aloha & Art

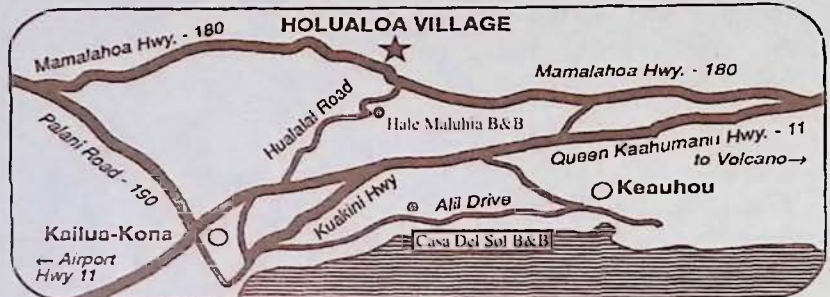


Hale Maluhia's Chinese Slate Spa amidst the tropical foliage

Days pass slowly in the artist's retreat town of Holualoa, almost like the gentle mountain breezes which weave their way through the groves of coffee trees lining the slopes of Mt. Hualalai. Steeped in natural beauty and tradition, this little mountainside coffee town blends a touch of today's art with a passion for the simpler life of the past. The village's many private galleries showcase the works of many local artists in a wide array of mediums.

When you are done visiting the galleries, the friendly local espresso bar, **Holuakoa Cafe**, will undoubtedly snatch an hour or two from your day and maybe more if you

decide to indulge in the homemade cake and pastry selection. Every Thursday night the sound of acoustic guitars may be heard in the night air strumming over a chorus of 'gone happy' coffee drinkers packing the cafe for Holualoa's only night time entertainment. (Give cafe owner, Meggi Worbach, a call at 322-CAFE for an up to date scoop on her local entertain-



ment schedule).

If you are looking for a place to spend the night, **Hale' Maluhia** (House of Peace) Bed and Breakfast is located below the village on Hualalai road. This rambling home offers guests a sense of seclusion and a touch of paradise and is outfitted with several lanais, an outdoor spa, kitchen and even office facilities.

Make it a point to wander up for a visit to Holualoa you will love this adorable country town.

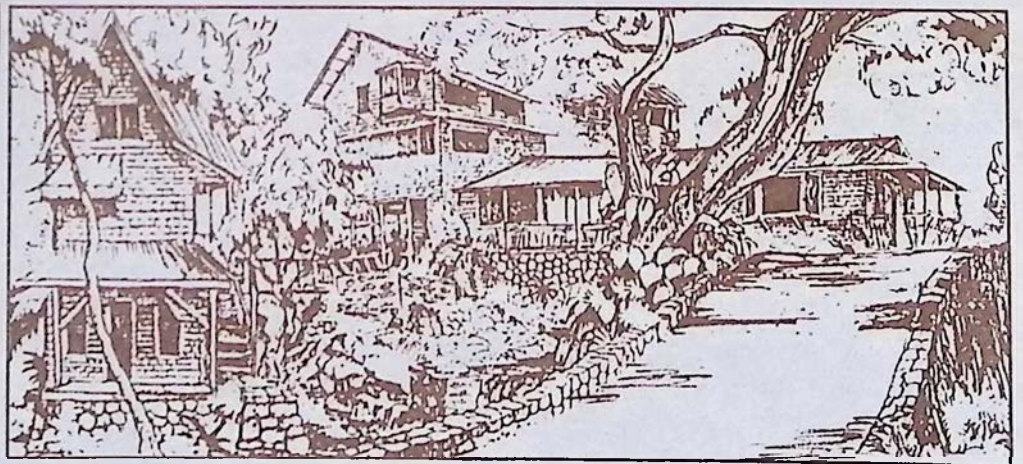
Hale' Maluhia Bed & Breakfast

RAMBLING PLANTATION LIVING nestled in the HEART OF UP-COUNTRY KONA COFFEE LAND

- * Large Clean Rooms, Private Baths
- * Chinese Slate & Tile Spa, Game-Room
- * Super Breakfast, Continental Plus
- * Double Rooms \$55 - \$110. (Discounts)
- * Easy Access To Airport & Village
(only 3 miles to Kailua-Kona Village)

For reservations or a FREE brochure write or call:

76-770 Hualalai Rd. Kailua-Kona, HI 96740
(808) 329-5773, 329-1123, 936-3300, Fax 326-5487



Holuakoa Cafe

Espresso Bar

SUMMER HOURS will be: MON - FRI 6:30am - 5pm

Closed Saturday & Sunday. **322-CAFE**



Please come in...
meet Elfie & Manfred, who
will be serving our delicious
coffee drinks while I'm
away on holiday.

Love,

Meggi

PS. I appreciate your continued support.

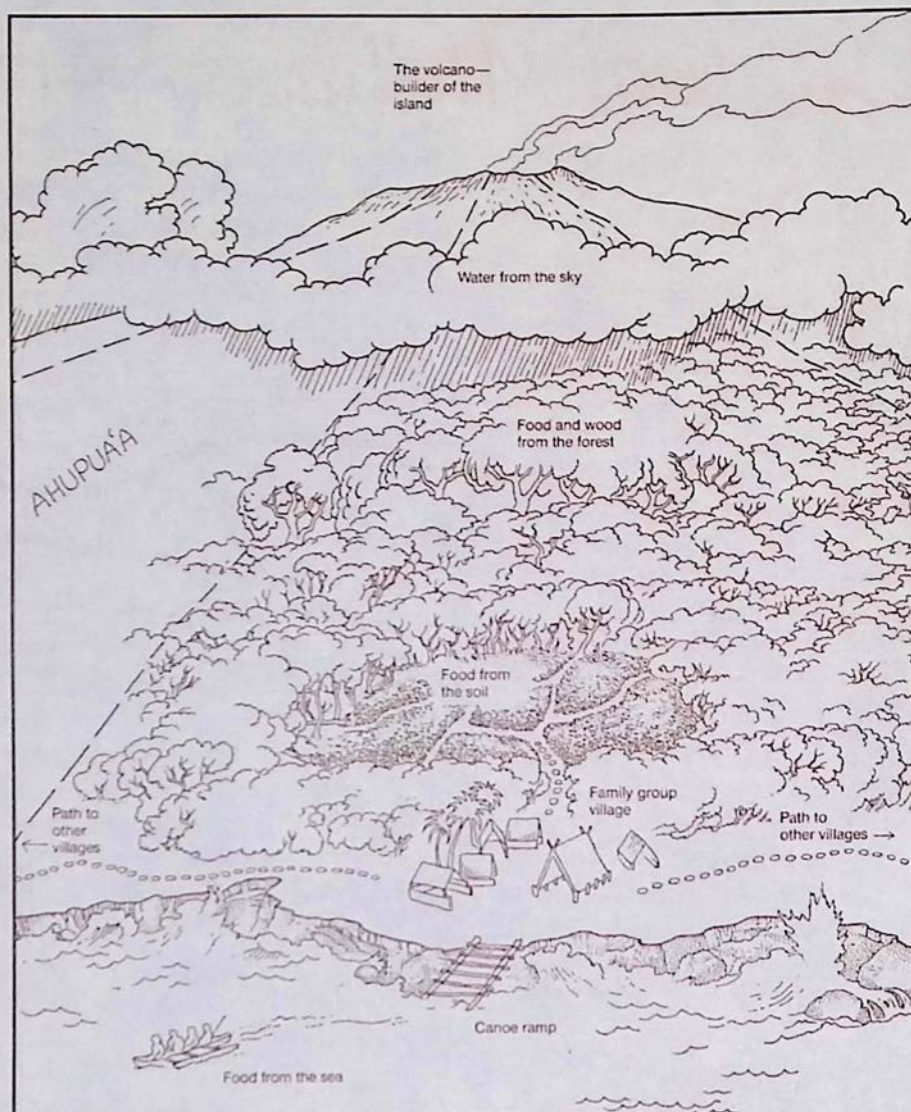
cont. from page 6

wipe out the entire population if they are not kept healthy. Hawaiian lore for the successful operation of fish resources is largely lost. Remnants of ponds and the villages associated with them can be viewed at various locations along the Kona Coast. Some that are easy to visit are at Kaloko National Park, behind the beach at Anaehoomalu of the Waikoloa Beach Resort, and on the grounds of the Mauna Lani Resort.

Along the coast we can see and marvel at the innovations of Hawaii's early peoples, but we can also wonder at technologies and skills being developed today. Modern Hawaiians are finding similar ways to use the sea. The goal is largely the same as it was for the early people

who lived here. They seek ways to use local resources without exhausting or corrupting the supply. Although the aim is similar, the approach different.

The mark of our present culture is scientific investigation and technology. One of the great locations for studying the ocean's resources in Hawaii is at Keahole Point near Kona International Airport. Like the airport itself, the point is a fairly desolate stretch of lava. It does not look like a good location to study



Sections of land in ancient Hawaii were called *ahupua'a* which were shared by all within its boundaries to farm and fish. This method sustained life for two million people before Cook arrived in the late 1700's.

drawing courtesy of Hawaii Natural History and the National Park Service

how to grow anything. Fertility was not the appeal of the location, nor growing things the main purpose of locating the Natural Energy Laboratory there. As the name implies, energy is available near the point, and that was the main factor for its selection.

Keahole Point has two primary resources that recommended it, sunlight, and cold seawater. The Point received more sunlight at sea level than any other location in the United States. The sunlight can be used directly, but its energy is also stored in the tropical surface waters. Warm seawater is available anywhere in Hawaii. What makes the location especially useful is the presence of cold seawater close to the shore. The topography off Keahole Point is very steep, nearly a undersea cliff. A quarter

of a mile off shore the depth is two thousand feet. This deep water ranges between 4°F and 8°F. The relatively short length of pipe needed to bring cold water to the surface makes Keahole Point the best location in to study Ocean Thermal Electric Conversion (OTEC).

The basic OTEC process, suggested by the French engineer Jacques d'Arsonval, has been known for over half a century. It involves low pressure steam

*Open Flame sates, classic
Indian style curries & stirfry*

*Located in the Banyan Court Mall
on Alii Drive in Kailua-Kona*

*"SIBU CAFE serves the best and the
most interesting, moderately priced food
in Kailua-Kona"* *Hawaii Handbook '92*



75-5695 Alii Drive, Kailua-Kona, HI 96740

*Specializing in Indonesian and
Southeast Asian Food Since 1982*

*GARDEN FRESH
VEGETARIAN SPECIALTIES
AVAILABLE
TAKE OUT OR EAT IN*

*Open 11:30-9p.m.
(808) 329-1112*

used to drive a turbine to make electricity. Early attempts to employ the process failed because the turbine was not efficient enough, and the ocean ruined the pipes that were deployed to reach the deep cold water resource.

A strong, dense, flexible plastic pipe that can withstand the pressures at 2000 feet, and a large diameter low pressure steam turbine, have now been developed. The technology is poised to take off and begin to meet the power needs of not only Hawaii but also the rest of the world. Scientists estimate that ten million megawatts could be produced from the thermal energy contained in the sea without significantly altering the balance of temperature in the ocean. This clean energy could be taken indefinitely because it is renewed by the warmth of the sun.

Currently operating is a 210 kilowatt power plant that shows the technology works. A one megawatt plant will be built in the future to show that the process can be effective when scaled up. After the technology is proven at one megawatt, a full scale commercial facility will be built. This latter plant will be hooked into the power grid to help meet the energy needs of the island.

What this has to do with Hawaiian fish ponds? There are two wonderful byproducts of the OTEC operation. One is fresh water, and the other is a special kind of aquaculture, and agriculture, which is dependent on the sea water drawn up from 2000 feet below the surface.

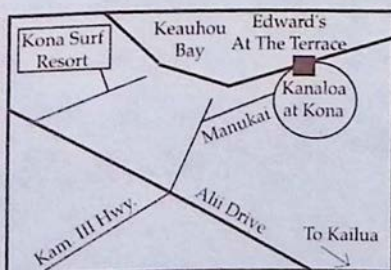
Beside being cold, the deep water has many more nutrients than the surface water, and, despite the extra nutrients, there are almost no viable micro-organism in the fluid. That the water is nearly pathogen free is very significant. In the confines of the tanks it is easy for a disease to take hold and then spread rapidly. The deep water is like a weed free fertilizer for you lawn. Products grown in it grow rapidly, and there is much less chance of some disease creeping into the system that kills off the crop.

EDWARD'S AT THE TERRACE

Featuring Mediterranean Classics, Ocean Side Tues. - Sun.

Serving Breakfast, Lunch & Dinner

322-1434



Lobster, flounder, and shrimp are being grown. This is made possible in the tropic climate because the water is as cold as it is in these species native habitats. One company markets a food supplement made from spirulina, a blue-green algae it grows with great purity in large ponds. Pearl oysters are being nurtured, as are opihi, a limpet delicacy loved by local Hawaiians.

One of the more interesting agricultural products is strawberries. You might wonder how alpine strawberries are cultivated at sea level in a tropical climate and irrigated by seawater. The answer is that the cold sea water never directly touches the plants. Instead, the water chilled pipes cause moisture to condense out of the atmosphere, and drip onto the strawberries. Subsurface pipes chill the roots so that the plants act as if they are in the mountains. By alternately cooling and warming the roots, the plant can be coaxed through four harvests a year. Berries grown this way are even sweeter than the natural varieties. Better than two dozen other food crops are being grown and sold locally.

Tours are available at the Natural Energy Lab. They are conducted weekly, usually on Thursday at ten in the morning. People who want to go on the tour should call in advance. The telephone number is 329-7341. Call during business hours. ■



Holualoa
I N N

"The finest B&B on this or
any other island in Hawaii. . ."

Jerry Hulse, L.A. Times

You are invited to visit this elegant
country estate overlooking Kailua Bay,
set amid coffee orchards and home
of Holualoa Kona Coffee Company.



HOLUALOA
Kona Coffee
c o m p a n y

Nightly Rates, \$100-150 • Weddings & Events Welcomed
Coffee Hulling & Roasting

For tours & information, call (808) 324-1121 or (800) 392-1812

EAST HAWAII AND HISTORIC HILO

When you talk about the old Hawaii, at least the one that hasn't been touched as much today by the long arms of commercialization and development, you cannot help but to mention the East Coast on the Big Island. At the center of all this is old town Hilo, seeing a revitalization of spirit thanks to the effort of the Downtown Hilo Organization is busy restoring and preserving the storefronts of this yesterday town. Aiding this effort are the wealth of new businesses occupying Hilo's old buildings.

One of the brightest spots has been the renovation and remodeling of the S. Hata Building by **Cafe Pesto**. This new restaurant has maintained the building's Renaissance Revival style of architecture and filled the air with smells of wood oven baked pizza and Pacific Rim Italian cuisine.

To add to this old Hawaii feeling are the daily Suisan Fish Market Auction and the Hilo Farmer's Market which held every Wednesday and Saturday in Downtown Hilo. One of the favorite fine dining spots in downtown Hilo is **Roussels**, open daily for lunch and dinner and serving French Creole Cuisine. When the shutters and doors open for the day aromas of fine cuisine will lure you into this wonderful and intimate restaurant that is reminiscent of those eateries found in the New Orleans French Quarter.

Outside the town to the north are the Hawaii Tropical Botanical Garden, located along a 4 mile coastal scenic route, and Akaka Falls with its self guided pathways that take visitors over ravines and past several other waterfalls before ending up at the grand daddy of them all, Akaka.

When you are done sight seeing, lodging in Hilo is a snap and can accommodate every type of visitor. The magnificent and

luxurious **Hale Kai Bed and Breakfast** on the bluff above the ocean overlooks Hilo's premier surf spot, Honolii. Expect nothing less than gourmet breakfasts and plenty of privacy. Hale Kai also has available a private cottage facing a pool and ocean. If you are looking to stay within walking distance to downtown Hilo stop in at the affordable **Wild Ginger Inn** which features a jungle garden and stream setting overlooking Hilo Bay. The 1922 **Haili House Inn**, located across from the Lyman museum, is uniquely decorated in vintage Hawaiian eclectic decor and is one of the most popular lodging opportunities for visitors seeking that feeling of old Hilo during their overnight stay. If a stay in the Hawaiian countryside is what you are seeking, head seven miles north out of town to Papaikou and check in at **Hale Lamalani** vacation rentals. Situated at 1,000 feet above sea level this country retreat offers plantation style lodging with all the serenity one could ever desire.

After leaving Hilo you don't want to miss the drive north to Waipio Valley which takes you over scenic gorges that were once crossed by cane hauling trains in the hey day of sugar cane production. The plummeting waterfalls and river mouths under the extensive bridge systems leading north up the Hilo Coast are definitely an awesome sight. Akaka Falls State Park and the village of Honamu can be reached by taking Hwy. 220 off of the main route, Hwy. 19 north. See the map. Once you reach the Park a short paved hike will trail you past a network of smaller waterfalls, lush and colorful tropical foliage to the plummeting Akaka Falls. Its accessibility and grand size make Akaka Falls a popular stop along this eastern coast.

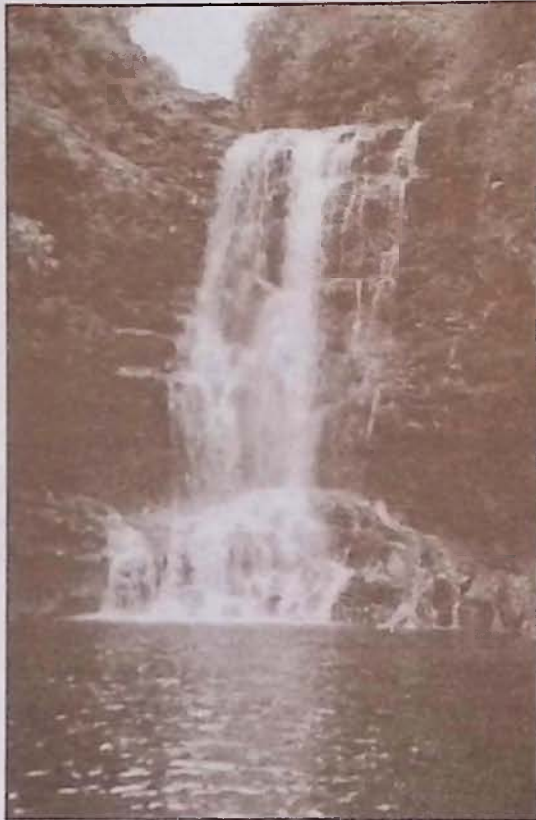


photo by Michael Stewart

Hale Lamalani (House of Heavenly Light)

A Hawaiian Hideaway, Vacation Rental & Hostel
Serenely situated with Inspirational Ocean, Mountain, Hilo Bay and Volcano Views from \$15 to \$55/Night! With Breakfast Fixings.

Located 5 miles north of Hilo above Botanical Garden and before Akaka Falls at the gateway to Hamakua.



Phone/Fax: (808) 964-5401, Outside Hawaii 1-800-238-8BED
R.R. 1 Box 206, Papaikou, HI 96781

1940's Plantation
style B & B
with jungle
garden &
stream. A
nonsmoking Inn.

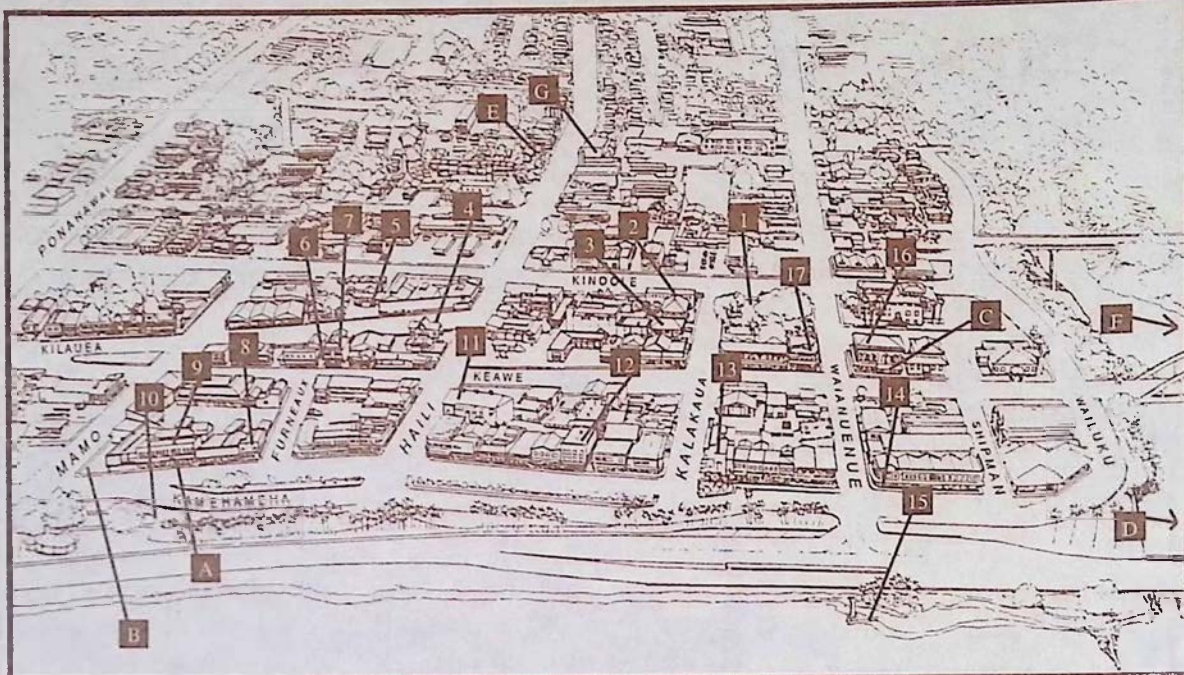
*Wild
Ginger
Inn*

\$39 private
bath double
with breakfast.
100 Puueo St.
Hilo, HI 96720
Call 808-935-5556

BED & BREAKFAST

Historical information and map provided by the Downtown Hilo Organization whose interests involve the preservation of Old Hilo, Hawaii.

Today, historic Downtown Hilo is alive and bustling with renewed energy. New and old businesses alike are meeting the challenge of revitalizing our city center while preserving the historic character which remains very special.



- A. Cafe Pesto (*Pacific Rim Cuisine*)
- B. Hilo Farmer's Market
- C. Roussels (*French Creole Cuisine*)
- D. Hale Kai B&B
- E. Haili House Inn
- F. Wild Ginger Inn
- G. Lyman Museum



Historic S. Hata Bldg., Hilo Bay, 969-6640
Live Hawaiian Music on Sundays, 6pm - Closing

Room rates begin at \$75/night

(808) 935-6330 Fax 935-8439

"Hilo Side Means Roussels' Side"



Serving Lunch Mon. - Fri. & Dinner Nightly ~ Reservations: 935-5111
60 Keawe Street ~ Historic Downtown Hilo

HONOKAA

CURIO

TRADITION

SIMPLICITY

SINCERITY

For years the town of Honokaa sat idle, its home town theater empty, local storefronts ghostly quiet, and streets void of the bustle that once rumbled down Mamane Street during the boom days of the Hamakua Sugar Company, an industry that for the last century has been the life blood of the people in this region. Since the decreasing activity of sugar production over the years and the recent decision this year to halt sugar production all together, the local citizens of Honokaa have redirected their energy and begun one of Hawaii's most spirited move-

ments of rejuvenation. Local merchants have taken the initiative to reopen some of the closed doors in this picturesque town, including the local ice cream parlor, now called **Simply Natural**, outfitted with an old fashioned soda fountain and spinning stools. Other shops such as **Na Pa Aloha**, **The Treasure Shop** and the **Honokaa Trading Company**, as well as many curio shops overflow with Hawaiian memorabilia, local crafts, and wearable arts.

Home town cooking flows out of **Mateo's Pizza**, **Jolene's Kau Kau Korner**, and **Mamane Street Bakery** to add to the distinctly local flavor of what pizza parlor owner, Alex Mateo proudly calls, "The New Honokaa". Included in this new Honokaa is the town's farmers market that has become a weekly event in the downtown area in front of the Historic Botelho Building. The market is open each Saturday of the month.

As Hawaii's old theaters are becoming more and more popular the citizens of Honokaa celebrated the reopening of their own **People's Theater**. The doors have officially been opened and evening feature films can be caught every Friday and Saturday evening at Honokaa's historic theater.

Also located in Honokaa is the **Hawaiian Macadamia Nut Plantation** which is located down the hill from Kau Kau Korner. The plantation allows visitors the opportunity to view the inner workings of a macadamia nut factory. Factory creations fill the store shelves and will undoubtedly make your taste buds dance when you try them. Also featured is the plantation's own bake shop.

Legend has it that it was in Waipio Valley, "the land of the falling water", the great King Kamehameha, as a young boy, received his leadership training and first learned to surf. Today, family ohanas, "houses", still dot the landscape which is separated by a river that leads into the open sea. Local farmers and their families continue to make their way of life from farming taro and fishing off the sandy shores of

It's the return of HISTORIC PEOPLE'S THEATER

Feature Films Now Playing
every Friday & Saturday
in Downtown Honokaa
775-0000

**HONOKAA
FARMERS MARKET**
Every Saturday
in Downtown Honokaa

Open Daily
in Honokaa



Banana Taro
Pancakes
Fresh Deli
Sandwiches
Old Fashion
Ice Cream Sodas
Soups of the Day
Hilo Homemade
Ice Cream
Even Taro Ice
Cream

See our coupon for a free
old fashion ice cream soda
Now Serving Breakfast
775-0119

**Mateo's
PIZZA** Spaghetti
Salads
Veggie Pizza
Open Daily at 11 a.m.



SPECIALS
2nd Medium
\$7.00
2nd Large
\$9

**HONOKAA
775-0944**

rainbow
NATION

Specializing in
Tahitian Quilts
& Pareo's

OPEN DAILY

P.O. Box 949, Honokaa, HI 96727
(808) 775-7742



Located in
Honokaa

Open
Mon - Sat
9 am - 8 pm

Serving the Island's Favorite
Local and American Dishes

What better place to share
a little something with the
community and travelers
from afar.

dine in **775-9498** take out

**MAMANE
STREET
BAKERY**



Fine Quality
Baking,
Quiches,
Focaccias,
Croissants,
Desserts,
Pastries,
Cookies,
Espresso,
Cappuccino

Wholesale and Retail
Located in
Downtown Honokaa
(808) 775-9478

**Honokaa
Trading Company**

Antiques
Collectibles
New & Used
Goods &
Furniture



Downtown Honokaa
(808) 775-0808

The Treasure Shop

Featuring...

A little bit of this and a
little bit of that!

Antique & Craft
Co-op.

Open Daily

Located next to Simply
Natural in Honokaa

775-8101

"NA PA' ALOHA"
CARDS, GIFTS, SOUVENIERS



Collectibles, Vintage
Sheet Music, Original
Works of Art, Children's
Quality Books & Toys,
Shell Leis, Baskets,
Unique Crafts

HONOKAA TOWN
(Across from Bank of Hawaii)

Open Weekdays and Sometimes Sundays
8:30 AM - 4:00 PM
(usually)

BILL & MARILOU IKAIKA
775-9173 or 936-7483

HAMAKUA

SUGAR NUTS WATERFALLS TRANQUILITY

this peaceful and remote valley floor.

Outside of Waipio Valley and Honokaa town are other early and small settlements of the Hamakua region such as Paauilo, Kukuihaele and Laupahoehoe all filled with a rich and local culture that happily survives in this region of the Big Island. Overnight accommodations can be found at any of the several B&B's in the region. See the listing on page 33. A couple of popular choices are the his-



EARLY WAIPIO VALLEY VILLAGE PRINT - engraving by Doms, circa 1785.

toric plantation setting at Waipio Wayside which offers guests home baked breads, private baths and a large lanai. Waipio Valley Artworks hosts several vacation rentals with waterfall and valley views. See their ad below.

New doors will continue to open for all of Hamakua as a period of change sweeps through the land with the fall of the sugar empire and the rise of small businesses in Honokaa.

Honokaa-Hamakua Farmers and Cultural Market June Schedule

Market held every Saturday beginning at 9:00 AM in front of the historic Botelho Building in downtown Honokaa

Call Hal Hisa Yamato at 775-9239 or Sylvia at 775-8319 for more information

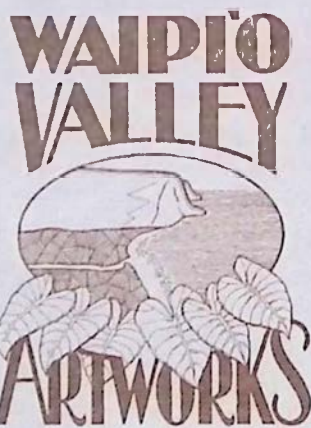
June	High School Graduation (leis, gifts) Honoring Graduates	June 18	Pre-Father's Day (leis, gifts) Honoring Dads
June 11	Post-King Kamehameha Day Celebration, Hawaiian Music	June 25	Summer Begins "June is busting out all over" Party

Hideaway retreats offering complete privacy and full modern comfort while you enjoy old Hawaii.

Hiking, Unique Shopping, Four Wheel Drive Tours, Surfcasting, Fresh Water Fishing, Horseback Tours, Bird Watching, Surfing

Free Ice Cream Cone if you mention this Ad while making a reservation

Phone: (808) 775-0958
Fax: (808) 775-0551



VACATION RENTALS
DAILY ~ WEEKLY ~ MONTHLY

Fantastic Valley and Waterfall Views, All Units Separate and Private, Accommodations Starting at \$65/Night Double Occupancy, Conveniently Located (halfway between Hilo and Kona), Tastefully Decorated by our Island's Talented Artists, Complimentary Gourmet Kona Coffee

Call TOLL FREE
(mainland, Canada only)
1-800-492-4746

HAWAIIAN MACADAMIA NUT PLANTATION

Factory Tours...and more!

Visit our Factory and Store in Honokaa for delicious macadamia nut creations - from freshly-roasted nuts surrounded by creamy chocolate, to macadamia nuts and coconut combined in a fantastic butter brittle, to the best macadamia nut cookies from "our" bakery...mmmm good.

LOCATED IN HONOKAA TOWN, THE HEART OF HAMAKUA

775-7201

Coffee Times Big Island Restaurant Review

HILO

CAFE PESTO: (pg. 29) Cafe Pesto has extended its service to the historic S. Hata Building in downtown Hilo. While the cuisine remains similar to what is offered at the original Kawaihae location diners can experience the tastes of wood fired pizzas and local dishes such as fresh fish and lomi lomi served on a bed of noodles. Organic produce and edible flowers complement the reasonably priced food which is always "an adventure in taste".

KOHALA

BAMBOO RESTAURANT & GALLERY: (pg. 8) At Bamboo you will find warm "Old Hawaii", featuring fine Hawaiian Regional Cuisine and "Local Style" food. Located in a fully restored historic building, Bamboo is a tropical restaurant, with "the best atmosphere on the island!" Here, local people gather in the deep old wicker chairs for passion fruit margaritas, Hawaiian entertainment, and Sunday Brunch. Try to catch one of their "theme nights" for a truly special evening. Browse and find a gift in the Kohala Koa Gallery of fine art and Pacific handcrafts. Open for Lunch & Dinner: Tuesday- Saturday till 9:30pm. Sunday brunch, 9-2:30pm. Closed Mondays.

CAFE PESTO: (pg. 7) Cafe Pesto has earned a reputation as an innovator of provocative island cuisine specializing in Pacific rim pizzas, pastas, salads and seafood served in a setting of casual elegance. The menu draws upon fresh organic produce from Puna and edible flowers and herbs from Hualalai and Volcano. With locations in downtown Hilo and south Kohala's Kawaihae, Cafe Pesto is reasonably priced and always, "an adventure in taste".

DON'S FAMILY DELI: (pg. 9) Just 6 miles before the end of the road there is an oasis of food and drink. A variety of meats, cheeses and breads. That's what makes it a deli. Also bagels, cream cheese, and lox and cappuccino make it a good place to sit and talk. Our garden room faces the King's statue across the road. To round out the menu we cater to vegetarians with quiche, enchiladas and lasagnes. We always have two soups, fresh carrot juice and our famous fruit smoothies and remember that everything travels well; to the end of the road at Pololu Valley lookout and the beach parks near by. Deserts, salads and dip ice cream also. Plenty of parking and always a refreshing breeze.

WAIMEA COFFEE AND COMPANY: (pg. 11) Located on Hwy. 19 as you drive through

beautiful upcountry Waimea. Sample the finest world-class coffees, cappuccino and gourmet treats at this friendly oasis. David Ellis and his cheerful staff will make you feel at home at this cozy country cafe-a great place to stop for lunch or for a welcome break in your day. Enjoy a variety of estate-grown pure Kona coffee as well as gourmet coffees from around the world, and take advantage of their easy mail order service to send coffee home. A perfect way to savor the relaxed pace and quality lifestyle of this beautiful area.

KONA

ALOHA CAFE: (pg. 20) The Aloha Cafe is located in colorful Kainaliu. Open for breakfast, lunch and dinner, the cafe boasts a sunny garden lanai overlooking rolling meadows and shining ocean. Quality & freshness best describe the food. Fresh squeezed orange or carrot juice and fruit smoothies quench any thirst. With an emphasis on vegetarian meals, our fish and pasta specials are complemented by an extensive wine & beer selection. From homemade soup to Mexican entrees to delicious cakes and cookies from our own bakery, the food is fulfilling and reasonably priced. Finished off with our 100% Kona coffee or espresso treats, the Aloha Cafe is a satisfying dining experience. Remember our Sunday brunch from 9am to 2pm.

EDWARD'S AT THE TERRACE: (pg. 27) Edward's at the Terrace is Kona's only ocean front restaurant featuring the cuisine of the Mediterranean region of Europe. Edward's is located on the grounds of the Kanaloa Condominiums in Keauhou, and is open for breakfast, lunch and dinner from Tuesday thru Sunday. Let the soft crash of the waves sooth your mind as you dine on such things as couscous grilled shrimp and babaganous, or robust fisherman's soup served under a puff pastry crust. For lunch you may select an old familiar favorite such as salade nicoise topped with fresh grilled tuna or one of the best burgers you'll have anywhere. Breakfast offers such treats as apple spice sausage patties and a family special of eggs and bacon.

LA BOURGOGNE FRENCH RESTAURANT: (pg. 36) Located just 3 miles south of Kailua-Kona this small, intimate restaurant makes you think you might be at a delightful French Country Inn. Chef/Owner Ron Gallaher features the simple, flavorful food of the Burgundy Region of France created from the freshest of local ingredients. In addition, La

Bourgogne's wine list includes quality selections from Burgundy and California at modest prices. Open Monday through Saturday from 5:30pm to 10:00 pm. Reservations recommended at 329-6711. All major credit cards accepted.

WAKEFIELD GARDENS & RESTAURANT: (pg. 23) For that old time feeling provoking life-long memories visit Wakefield Gardens & Restaurant. Enjoy relaxed charm while dining amid the personal, friendly, uncrowded, fragrant botanical atmosphere. Worldwide letters relate our best features. Aloha Spirit- a warm welcome giving an "at home" feeling; Old Time Hawaiian Music, Fresh - Clean - Wholesome Food; Something for everyone and our Strawberry Papaya filled with special tuna salad received 4 stars in Gourmet Magazine; Kona hot iced coffee, Kids cheeseburgers, vegetarian fare, homemade macadamia nut pies, reasonable prices. Free botanical garden self-guided tours. Open 11am - 3pm. Spread the word - the magic of romantic Hawaii still exists. Aloha!

PUNA

THE GODMOTHER - RISTORANTE ITALIANO: (pg. 14) A pleasant surprise awaits you. Located amid romantic surroundings on Main Street in Historic Pahoa Village, the large menu features delectable pasta selections and traditional New York-style family recipes. With indoor-outdoor dining, the Godmother is serving breakfast and lunch from 8am until 3 pm and dinner from 5 pm until 11 every day. Stop by, meet the family, enjoy the ambiance and savor the food. Daily specials, a full bar and a friendly staff combine to create the perfect occasion. Major credit cards welcome. Ciao Bella!

VOLCANO

KILAUEA LODGE: (pg. 15) Well known for Chef/Owner Albert Jeyte's Continental-local cuisine, Kilauea Lodge is located in the cool sub-alpine rain forest region of Volcano. The misty region encourages a hearty appetite and Chef Albert, whose menu favors fish and fowl, does not disappoint. An inspired wine list, helpful staff, Hawaiian decor, and historic Fireplace of Friendship, make Kilauea Lodge a memorable experience. Open nightly 5:30-9:00pm. Reservations recommended. Located one mile Hilo-side of Volcanoes National Park.



25. MY ISLAND BED & BREAKFAST: An 1886 historic missionary home at Kilauea Volcano surrounded by a 5 acre botanical estate. Rooms in the main 3-story house & garden apartments, caters to couples, singles & families. Full breakfast. Prices from \$35 to \$75. Special touring booklets. All the magnus you can eat. **Write: Gordon & Joann Morse, P.O. Box 100, Volcano, HI 96785 (808) 967-7216, (808) 967-7110**

11. DA THIRDHOUSE: Quiet, peaceful studio. Private entrance & lanai. Unobstructed ocean view. Minutes away from sandy beaches, best snorkeling. King Size Bed, Refrigerator, Microwave, TV. All amenities. P.O. Box 321, Honaunau, HI 96726. (808) 328-8410.

June On The Big Island

Sundays Every Month - JAZZ - LIVE IN HILO

The Skyliners play music from the Big Band era at D'Angoras in the Hilo Lagoon every Sunday afternoon from 3:30 to 6:30 p.m. 776-1611 for information.

1-30 ARTIST JAMES KAULUKUKUI FEATURED AT THE FIREHOUSE GALLERY IN WAIMEA

Featuring 25 pieces of local themes with a reception scheduled for June 11th from 3pm - 5pm at the Firehouse Gallery. Island guests and the local public are invited. The Gallery is open Tuesdays, Thursdays and Saturdays from 10am - 2pm and is located in Waimea's old firestation. 885-7671.

1-29 "JAPAN ARTIST MIEKO MORIYA"

A well known artist from Japan whose pseudonym is "SHUKEI", exhibits her work. Wailoa Center Mini Gallery, Hilo, 933-4360.

3-5 THE ODD COUPLE

Neil Simon's New Female Version live at the Aloha Theater in Kainaliu, 322-9924. See pages 20 & 21 for more info.

4 BIG ISLAND DANCE CONCERT

A wonderful variety of dance pieces choreographed by Big Island dancers, some of them Hawaii State award winners. Cost is \$4 for VAC members and \$6 for non-members. 7:30pm. Kilauea Theater, Volcanoes National Park, 967-8222.

4, 9-11 "SAFE SEX"

Presented by the Mainstreet Pahoa Association & the Puna Theatre Group as a Big Island AIDS Project Benefit. Harvey Fierstein's hit Broadway Comedy will be directed by Bill Turner. Showtimes are 7:30pm, donation of \$15.00. Pre-opening dinner at the Godmother's, 6:00pm, on the 4th. Donation for dinner will be \$15. Tickets available by calling 965-9943 or at Pahoa Home Video, Keaau Natural Foods, Rhythm & Reading (Hilo), or Huna Ohana (Pahoa). Akebono Theater, Pahoa.

4-29 "CELEBRATION OF HAWAIIAN TRAILS"

Coordinated by Dept. of Land and Natural Resources, and Maile Sakamoto. A photographic story collection of Hawaiian Trails in the State. Function of Forestry and Wildlife. Wailoa Center, Hilo, 933-4360

8 CHILDREN'S THEATRE AND DANCE RECITAL IN KOHALA

Final performance for parents, friends, local community and island guests at the James Walker Hall in Kapa'au. Included in the program will be a play entitled "The Safety Kids" by Jym Duncan's Musical Play Making Class followed by selected pieces danced by Virginia Holte's Ballet Classes. Refreshments will be served. 6:00pm - 7:30pm. 889-6143

9-12 THE ODD COUPLE

Neil Simon's New Female Version live at the Aloha Theater in Kainaliu, 322-9924. See pages 20 & 21 for more info.

11 KING KAMEHAMEHA DAY

14 AFTER DARK IN THE PARK PRESENTS: "Life in the Universe: Are We Alone?"

Astronomical instruments in space and new technologies employed at Mauna Kea and other observatories on Earth are bringing us ever closer to answering one of humankind's most basic questions - "Are there other life forms in the universe?" University of Hawai'i astronomer Brad Smith, who has had a long and illustrative career working with NASA's Voyager missions, will present a slide program about who else may be out there. Kilauea Visitor Center Auditorium, 7:00pm, Volcanoes National Park, 967-7184.

16-18 THE ODD COUPLE

Neil Simon's New Female Version live at the Aloha Theater in Kainaliu, 322-9924. See pages 20 & 21 for more info.

18 KATSU GOTO MEMORIAL DINNER

Katsu Goto was a spokesman for the Japanese Immigrant Workers at Overend Camp, a sugar plantation in Honokaa. He sacrificed his life to improve the working and living conditions of laborers in the sugar plantations. Some regard him as the first labor organizer in Hawaii. 1989 marked the 100th anniversary

of Katsu Goto's death. A committee chaired by Porky Kotake is working to build a memorial to assure that his contributions and sacrifice will not be forgotten. With the closing of Hamakua Sugar, Hilo Coast Processing company and Kau Agribusiness Sugar it becomes even more important to remember the sacrifices of pioneers like Katsu Goto. Dinner will be held at Honokaa Hongwanji from 5:00pm - 8:00pm. Entertainment: Let's Roast Porky Kotake! Good Food, No Host Cocktails. Donation \$5.00. Tickets may be purchased at Pioneer Federal Savings Bank, Honokaa and Waimea Branches or call 775-9195.

18 NA HULA O LA'I KEALOHA

This halau from Lanai will be performing at the pa hula adjacent to the VAC Gallery. 11:30am, Volcanoes National Park, 967-8222.

18 LEI MAKING X3

Back by popular demand! Joyce Jacobson, Jessica Harriss and Lori Anderson team-teach an intensive lei making workshop at Studio 82. Participants in previous workshops have always taken home beautiful leis. three instructors insure plenty of individual attention in this workshop which is limited to twelve people. All plant materials and supplies are included in the fee of \$18 for VAC members and \$20 for non-members. 9:00am to 2:00pm, 967-8222.

18,19 WAIKI'I MUSIC FESTIVAL (see pages 12 & 13)

19 HAPPY FATHER'S DAY

19 THE MAGIC OF WATERCOLOR

with instructor Robert Dvorak. Anyone can watercolor when they know the magic of the medium. Workshop will provide a sequence of simple exercises designed to give you the success you might expect after months of instruction. 11am to 6:00pm, Call VAC for information, 967-8222.

20 THE ART OF SELLING ART

with Robert Dvorak. This is a high content mini sales program oriented to the individual artist and art dealer. Be prepared for an informative evening filled with art related selling tips. Call VAC for info, 967-8222.

20 BEGINNING OF THE KOHALA COMMUNITY ARTS PROGRAM SUMMER ART SESSION

Summer classes will include: Children's Musical Play Making, Teen Acting for Film and Video, Ballet, Modern Dance, Creative Dance, Boat Building, Lau Hala Weaving, Chinese Brush Ink and Watercolor Painting and for parents and teachers a class entitled Super Teaching and Accelerated Learning. For more info, call 889-0421.

21 AFTER DARK IN THE PARK PRESENTS: "New Zealand, Land of the Long White Cloud"

New Zealand's natural beauty is world renowned. While some of its landforms, plants and animals are unique to New Zealand, others are hauntingly familiar to residents of Hawai'i. Using slides and video, John and Maile Kjargaard will explore the splendid diversity of New Zealand's island life - with its volcanoes, landscapes and biota - from a Hawaiian perspective. Kilauea Visitor Center Auditorium, 7:00pm, Volcanoes National Park, 967-7184.

25,26 "BIG ISLAND AMATEUR RADIO CLUB"

A 24 hour amateur radio operators' field day. Wailoa Center, Hilo, 933-4360.

28 AFTER DARK IN THE PARK PRESENTS: "Gems of the Forest: Hawaiian Tree Snails"

Kahuli is the Hawaiian name for the jewel-like tree snails of the forests. Now reduced to rare vestiges on a few remote ridges, an amazing variety of tree snails with richly decorated shells once cruised the foliage of Hawai'i's native plants. Naturalist-photographer Bill Mull will present live color photos and lifestyle stories of these endangered Hawaiian bio-treasures. Kilauea Visitor Center Auditorium, 7:00pm, Volcanoes National Park, 967-7184.

Kona Historical Society Museum

The Kona Historical Society, a non-profit organization, was founded in 1976 to collect, preserve and disseminate information about the history of the Kona districts on the island of Hawaii. It maintains a growing reference library and archive containing photographs, manuscripts, maps and oral histories as well as a small collection of artifacts.



Historical Photo Exhibits on display every month

Museum Hours

9:00 a.m. - 3:00 p.m. Weekdays

Closed All Holidays

ADMISSION IS \$1.00 (members & children under 12 free)

Located on Highway 11, one-half mile south of rural Kealahou.

P.O. Box 398 Captain Cook, HI 96704

TELEPHONE (808) 323-3222



PILOT A CESSNA AIRCRAFT AROUND THE BIG ISLAND

Under the supervision of a certified flight instructor

See Hawaii's:

VOLCANOES~WATERFALLS~VALLEYS

FREE T-SHIRT WITH ISLAND AIR TOUR
see our coupon

Cool, comfortable, spacious and smooth
The best visibility and stability plus a full intercom system on board for a truly custom trip.

Aircraft Tours, Rentals, Charters and
Aerial Photography also available

326-2288

HAWAII'S ONLY Submarine Adventure

Come descend into the ocean world with us as we explore 25 acres of Kona's natural coral reef and hundreds of tropical fish. Life under the Hawaiian ocean will fascinate you!

FREE ATLANTIS CAP

see our coupon

Hourly dives daily.
Departing from
King Kamehameha's
Kona Beach Hotel
on Alii Drive in
Kailua-Kona

Atlantis
SUBMARINES

For reservations please call or see nearest activity desk
(808) 329-6626

Adrienne's Casa Del Sol Bed and Breakfast Inn

(House of the sun - a traditional Bed and Breakfast)

Offering guests
the true Aloha
Spirit of Hawaii!



Ocean Front/Views From Every Room & Suites (\$80-\$150), all with Private Baths, Breakfast Buffet Served By Inground Swimming Pool/Ocean View Spa Area, Relaxing Atmosphere- Watch Surfers, Whales, Fabulous Sunsets from your Chaise, Minutes to World Class Golf, Diving, Shopping, Restaurants, Charter Fishing, Village or Airport



Stop By Now: 77-6335 Alii Dr., Kailua-Kona, HI 96740
or call (808) 326-CASA(2272)

KONA BIKE TOURS

GUIDED BIKE TOURS OF HISTORIC KEALAKEKUA BAY

Stops at:
Painted Church,
Kona Coffee Mill,
Kealahakua Bay,
Place of Refuge
Plus:
Snorkeling
and Picnic Lunch



MOUNTAIN BIKE RENTALS

**FREE
WATER
BOTTLE**
 see our coupon

We carry the full line of
IRONMAN
 merchandise
 Plus all of your running,
 swimming & biking needs

Located in the Kona Inn Shopping Village

329-2294

Waipio Wayside

Bed & Breakfast Inn

(10 minutes from Waipio Valley)



1938 sugar plantation managers home that provides a peaceful and relaxing retreat to those who wish to unwind in a warm and comfortable atmosphere. Choose from five unique bedrooms ranging from \$50 to \$100. Enjoy a hearty breakfast in a traditional Bed and Breakfast.

Call today to start experiencing the comfort and quality of old Hawaii. See our listing in B&B section.

775-0275 or 1-800-833-8849

Restaurant La Bourgogne

CUISINE FRANCAISE

June Prix Fixe Menu

GREEN LENTIL SALAD
 WITH VEGETABLES, HERBS, & PANCHETTA

Guenoc Estate Chardonnay '92

BREAST OF PHEASANT WITH RED ONION CONFIT
 POTATOES RISSOLE
 VEGETABLE RATATOUILLE

Langley Meritage Red '90

APPLE WALNUT TART
 100% PURE KONA COFFEE



\$38 Per Person

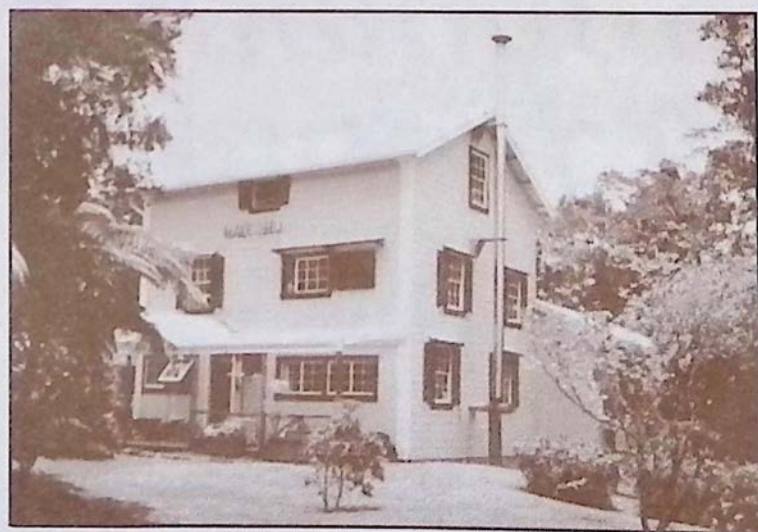
Served in addition to our regular menu throughout the month

RESERVATIONS: 329-6711

La Bourgogne will be hosting a special Wine Dinner on
Thursday, June 23 with

Orville & Karen Magoon of Guenoc Winery
 Seating will be limited - call today for reservations

MY ISLAND BED & BREAKFAST AT VOLCANO



Featuring...

- ~All the macadamia nuts you can eat~
- ~A variety of rooms at a range of prices~
- ~We serve a "stuff-yourself" breakfast~
- ~Located on a 5-acre estate full of flower gardens~
- ~Personalized touring information for East Hawaii~
- ~Come spend time in our 108-year old historic house~

967-7216 OR 967-7110

(See our listing in B&B section)