

The Alternative Visitor's Guide

FREE



Coffee Times

April 1994 / Big Island of Hawaii / Volume 2 Edition 1

Hilo's Merrie Monarch Hula Festival
Schedule of Events Page 22
Dining, Lodging, Tours, History,
April Calendar and more... Inside



Print by Dumont D'urville, c. 1836

Hula

Folkdance of the Hawaiian People

HAWAII ISLAND INDEX OF EVERYTHING

ART GALLERIES

Ackerman Galleries	889-5971	P. 7
Blue Ginger Gallery	322-3898	P. 19
Cook's Discoveries	885-3633	P. 9
Hale O' Kauwehi	775-0255	P. 26
Upcountry Connection	885-0623	P. 10
Volcano Art Center	967-8222	P. 12
Wo On Gallery	889-5002	P. 6
Woodcarver's Corner	985-8518	P. 13

COFFEE FARMS

Old Hawaiian Coffee	328-2277	P. 3
---------------------	----------	------

COFFEE RETAILERS AND CAFES

Bad Ass Coffee Co.	1-800-338-7139	322-2646	P. 14
Holuakoa Cafe		322-CAFE	P. 21
Waimea Coffee & Co.		885-4472	P. 10

DINING

Aloha Cafe (International, Mexican...)	322-3383	P 18	
Bamboo (Pacific Rim, Thai.)	889-5555	P 6	
Cafe Pesto (Pacific Rim Italian)	Kaiwihac 882-1071	Hilo 969-6640	P 7,25
Don's Deli (International)	889-5822	P 7	
Jolene's Kau Kau Korner (Cafe)	775-9498	P 26	
La Bourgogne (French)	329-6711	P 32	
Luquin's Mexican Restaurant (Mexican)	965-9990	P 15	
Mamane St. Bakery	775-9478	P 26	
Mateo's Pizza	775-0944	P 26	
Nuang Mai (Thai Kitchen)	965-8186	P 15	
Roussels (French Creole)	935-5111	P 25	
Sibu Cafe (Indonesian & Southeast Asian)	329-1112	P 11	
The Godmother (Italian)	965-0055	P 15	
Wakefield Gardens (Home Cooked)	328-9930	P 19	

LODGING

Bamboo House		965-9340	P. 15
Carson's Volcano Cottages		967-7683	P. 12
Chalet Kilauea		967-7786	P. 13
Haili House Inn		969-7378	P. 25
Hale Kai B&B		935-6330	P. 25
Hale Maluhia B&B	1-800-559-6627	329-1123	P. 21
Hale Ohia Cottages		967-7986	P. 12
My Island B&B		967-7216	P. 32
The Village Inn		965-6444	P. 15
Waipio Wayside	1-800-833-8849	775-0275	P. 32
Wild Ginger Inn		935-5556	P. 25

MUSEUMS

Kona Historical Society	323-3222	P. 31
-------------------------	----------	-------

AIR, LAND AND OCEAN ADVENTURES

Blue Hawaiian Helicopters (Helicopter Tours)	961-5600	P. 24
Body Glove Snorkeling Cruise (Snorkeling Cruise)	326-7122	P. 31
Chris' Bike Adventures (Bike Tours)	326-4600	P. 6
Dan McSweeney Whale Watch	322-0028	P. 20
Hawaii Resorts Transportation (Horse, Van Tours)	775-7291	P. 27
Koa Air Service (Helicopter, Plane Tours, Instruction)	326-2288	P. 31
Kona Bike Tours (Mountain Biking, Bike Equipment)	329-2294	P. 32
Nautilus Submarine Experience (Underwater Reef Tours)	326-2003	P. 3

SPECIALTY SHOPS

Antiques	Na Pa' Aloha	775-9173	P. 26
Clothing	As Hawi Turns	889-5023	P. 7
	Hawaiian Hemp Co.	965-8600	P. 15
	Princess Kaiulani	885-2177	P. 11
	Rainbow Nation	775-7742	P. 26
Dance Studios	Dameron's Academy of Dance	322-8119	P. 18
General Stores	Aloha Village Store	322-9941	P. 18
	Kohala Health Food	889-0277	P. 6
	Naalehu Fruit Stand	929-9009	P. 4
	Pahoa Natural Groceries	965-8322	P. 14
	Waimea General Store	885-4479	P. 10
Hardware	Pahoa Hardware	965-6459	P. 14
Ice Cream	Simply Natural	775-0119	P. 26
	Tropical Dreams	889-0505	P. 7
Gardens	Akatsuka Orchid Garden	967-8234	P. 12
	Hawaiian Rainforest Garden & Gift	965-9576	P. 15
Mac. Nut Factory	Hawaii Mac. Nut Plantation	775-7201	P. 27
Photo Developing	Kailua Camera Store	329-4727	P. 31
	One Hour Moto Photo	329-2080	P. 3
Publications	Ka'u Landing	929-8130	P. 19
Real Estate	A Real Estate Concern	322-6119	P. 19
	Kohala Pacific Realty	889-5181	P. 7
Spa Service	Querencia Spa	328-2569	P. 23

THEATRES

Akebono Theatre	(see calendar)	965-9943	P. 14
Aloha Performing Arts Center	(see calendar)	322-9924	P. 18
Kahilu Theatre	(see calendar)	885-6017	P. 8
Kilauea Theatre	(see calendar)	967-8222	P. 30
Kona Market Place Cinemas		329-4488	P. 3
People's Theater		775-0000	P. 26

COFFEE TIMES

For calendar inserts, historical comments
or

TO RESERVE ADVERTISING SPACE

Call or write the publisher,

LES DRENT at:

(808) 326-7637

P.O. BOX 1092

Captain Cook, Hawaii 96704

For Mainland Subscriptions:

Send \$25.00 for 12 months

Add \$5.00 if outside of USA

Mail to:

Up Country Productions

P.O. Box 1092

Captain Cook, HI 96704

Read This ↓

UP COUNTRY is not the manufacturer, or an agent of the manufacturer, for the goods and services being advertised herein and therefore makes NO EXPRESS OR IMPLIED WARRANTY OF ANY KIND WITH RESPECT TO THOSE GOODS AND SERVICES. The publisher will not be responsible for typographical or printing errors, but will reprint without charge that portion of the ad in which the error occurs. Publisher accepts no responsibility for errors resulting from telephone insertions.

Illustrations used herein are for design purposes only and do not necessarily depict the actual items offered by the advertisers.

This publication may not be reproduced in whole or in part without the prior written consent of UP COUNTRY and reserves the right to edit, revise or refuse any advertisement.

expires
4/30/94

ONE SUNDETTTE ONLY \$1.59

This mini sundae regularly \$2.29

Waimea Center

885-2166

Kona Coast Shopping Center

329-0151

"TCBY"

The Country's Best Yogurt

see page
14

expires
4/30/94



**Buy 5 Pounds
of Kona Coffee**

Get 1 FREE

at our Kainaliu Roasting
Room with this coupon

FREE T-SHIRT

With Island Air Tour
and this coupon

see page
31

326-2288

expires
4/30/94



**FREE WATER BOTTLE
WITH HISTORIC KEALAKEKUA
BAY BIKE ADVENTURE
KONA BIKE TOURS**

expires
4/30/94

329-2294



see page
32



FREE

expires
4/30/94

ICE CREAM CONE
with purchase of deli
sandwich and this coupon

see page
26

Captain Dan McSweeney's Year Round

Whalewatch

**FREE 8x11
Color Whale**

see page
20

with direct booking

322-0028

Photo

expires
4/30/94

see page
21

Holuakoa Cafe

expires
4/30/94

*Free cup of 100% Kona Coffee
with this coupon*

322-CAFE located in Holualoa Town



NAUTILUS II
SEMI SUBMERSIBLE

\$5 Off

Underwater Ride
with this coupon

326-2003

see page
3

expires
4/30/94

Old Hawaiian Coffee

1870's Trees



Specializing only in 100% pure estate grown Kona Coffee

HIGH QUALITY MODERN COFFEE PULPING MILL

COME TOUR OUR HISTORIC COFFEE FARM

Take a FREE tour of our farm for the real story of how coffee is produced. We are located off Highway 11 in Honaunau, one tenth of a mile south of mile marker 105, just after the mailbox on the mauka side of the road.

"We'll take you from the tree to the roast."

Misha Sperka (farmer/owner)

84-5042 A Mamalahou Hwy., Captain Cook, HI 96704

**CERTIFIED ORGANIC
H.B.G.A.**

(808) 328-2277



KONA MARKETPLACE

CINEMAS

Grand Reopening 2 SCREENS

*Newly Remodeled ~ New Air Conditioning
at the Kona Marketplace in Kailua-Kona*

**For Showtime Information Call
329-4488**

**ONE HOUR
MOTOPHOTO™**

FREE SET OF PRINTS

with every roll of film developed

SEE OUR COUPON

329-2080 Kona Inn 322-8091 Keauhou

*Located at: Kona Inn Shopping Village (1 hour) on Alii Drive
& at the Keauhou Shopping Village (overnight service)*



NAUTILUS II

SEMI SUBMERSIBLE

HAWAII'S SUBMARINE EXPERIENCE



\$5 off

**EACH PASSENGER
see our coupon**

INTRODUCTORY PRICES

ADULTS \$34.95

CHILDREN \$19.95

*Enjoy Both Topside and Underwater Viewing in our
Air-Conditioned, 58-Foot, 34-Passenger Coast Guard
Approved Vessel. No Age Limit, Day and Night
Cruises, Special Group Charters Available.*

*For reservations call or stop in at our shop. We
are located across from the pier in Kailua-Kona*

326-2003

Button Design Contest Set For Kona Coffee Cultural Festival

Kailua-Kona--The twenty-fourth annual Kona Coffee Cultural Festival has issued a call for entries for their button design contest. The winning designer will be awarded a grand prize of \$150.00 and the design will be featured on the booster button and other festival promotional materials. The deadline for design submission is 4:00 p.m., Friday, April 8. Late entries will not be accepted. Final design selection will be made by the Kona Coffee Cultural Festival Board of Directors. Winning design will be used for 1994 promotional button and other related applications including advertising and promotional materials. The winning artwork becomes the sole property of the Kona Coffee Cultural Festival. The Kona Coffee Cultural Festival reserves the right to enhance or modify color or de-



sign. All entries, other than the winning design, will be returned in April.

Entries should be delivered to Current Events at 75-5751 Kuakini Highway, Suite 202, Kailua-Kona, HI 96740. Call 326-7820 for further information.



Design Criteria Specifications:

- *1994 theme: Kona Coffee - Perfection in a Cup must be incorporated into button design.
- *Format can either be circular or rectangle in shape.
- *Art can be submitted in either color or black and white
- *Image should not be larger than 8 1/2" x 11".
- * Name, address and telephone number must accompany each entry.

KONA COFFEE COUNCIL

Statement of Policy Regarding Certification Marks

The Kona Coffee Council has received many questions regarding the application and enforcement of the certification marks KONA and 100 PERCENT KONA COFFEE and DESIGN.

In response to the inquiries from members of the specialty coffee trade, and with the intention to provide the coffee community with a uniform written statement of its position, the officers and board of the Kona Coffee Council have adopted by unanimous vote this Statement of Policy.

Ownership of the KONA and 100 PERCENT KONA COFFEE and DESIGN certification marks does not empower the Council to control in any manner the legitimate use of the word Kona by anyone else. Kona, as an historic geographic designation of origin for coffee, is a term in the public domain that cannot be owned by any person or organization. For example, the existence of the Council's certification marks does not prevent others in the coffee industry from using the Kona as part of their business name. Nor does it prevent use of the term "Kona blend" on coffee which truthfully contains a mixture of Kona-grown and other coffee. The KONA certification marks will only be enforced against those who attempt certification marks without Council authorization or against counterfeit coffee which is clearly labeled to contain Kona coffee and which in fact contains no Kona-grown coffee.

The Council has adopted as its requirements for mark certification the grading standards and geographic borders already in place in the State of Hawaii. However, the certification program adopted by the Council is legally independent of the system of green-coffee grading and certification conducted by the Department of Agriculture of the State of Hawaii.

It is the goal of the Council to provide consumers and sellers with accurate information concerning the content of 100 percent Kona-grown coffee, and to educate consumers and sellers to seek the KONA certification marks as assurance that the coffee they purchase originates in the Kona district. The Council intends to conduct this program in two ways. First, it will permit use of the certification marks by all persons without discrimination who agree to honor the Council's published certification standards of 100 percent Kona-grown coffee of prime or better grade. In the case of the word mark KONA, certification approved permits the use of the word Kona followed by the superscript™ or (after registration)®. Second, the Council will engage in an education program to inform consumers and sellers of the benefits of 100 percent Kona coffee and of the quality assurance provided by the certification marks appearing on labels and bags.

The Council emphasizes that participation in the certification program is completely voluntary. For example, at the present time, only approved users can display the certification mark "Kona™ coffee" on labels and bags. However, anyone can continue in the legitimate use of the term "Kona Coffee" or "Kona blend coffee" without the certification notice. The Council believes that the coffee buying public is interested in the unique characteristics of 100 percent Kona coffee and desires easily-identified marks to assure they get the premium coffee for which they pay a premium price. Broad public acceptance and the competitive advantages that may result from use of the certification marks will encourage sellers voluntarily to seek approval to use these marks and to comply with the Council's basic published standards. It is both Council policy and federal law that access to certification marks is available without discrimination to any applicant who agrees to conform to the certification requirements of geographic origin and grade.

This Statement of Policy seeks to correct any misconceptions and to enlist the entire Kona coffee community in what should be the universal goal of promoting the premium position of Kona-originated coffee in the world market. It is also a declaration by the Kona Coffee Council that is united in the desire to represent and reflect the responsible views of all segments of the Kona coffee community.

Anyone wishing further information about the certification mark program is invited to contact John J. Langenstein, chair of the Certification Committee, at the Kona Coffee Council, P.O. Box 2077, Kealahou, HI 96750 / (808) 329-4388.

The Kona Coffee Council
February 21, 1994



Naalehu

Fruit Stand

"A stop in good taste"

Open daily
at 9 am
on Hwy 11
It's the perfect rest
stop on the way to
Volcano!

This general store-restaurant takes pride in homemade goodness. Choose from numerous tropical breads like pineapple-coconut, to saucer-sized cookies like mac nut butter. The macadamia nut pie is a prize winner. Sandwiches come on homemade bread and the pizza boasts all made-from scratch ingredients. Wet your whistle with the fresh-pressed pineapple juice. Sundry and souvenir items available. Located on Hwy. 11 in Naalehu. Free souvenir with purchase!

P.O. Box 31 Naalehu, HI
96772 (808) 929-9009

Friendly North Kohala

Biking Adventures, Art Galleries, Fine Dining, Cafes, Quaint Shops, and even a local Ice Cream Factory

Following highway 270 north visitors will encounter a landscape filled with historical landmarks that include the original statue of King Kamehameha,

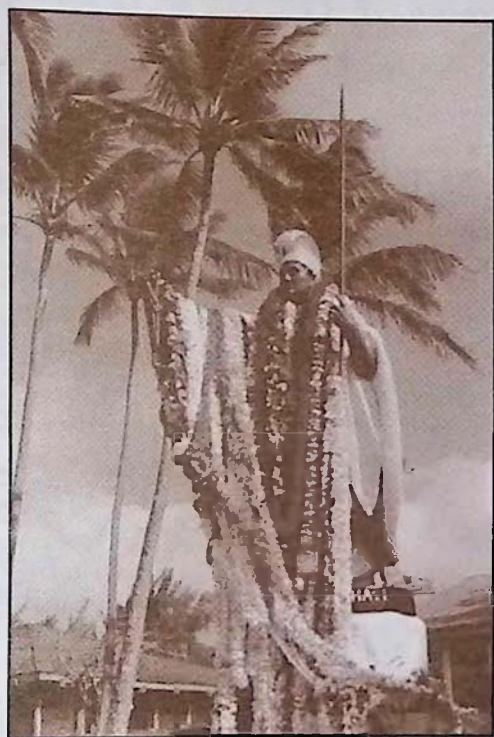


photo by Michael Stewart

Kalahikiola Church, and Mo'okini Heiau which is regarded as the oldest pre-Western contact temple of worship. In the year 1758 King Kamehameha was believed to be born at Mo'okini.

Also to be found in the North Kohala region are the remnants of a once thriving sugar plantation industry of the 1880's which is still visible in the many old storefronts of Hawi & Kapaau towns. These towns are now preserved by a new genera-

tion of Hawaii business which have their own distinct local offerings. In Hawi Town, a fun romantic & wild boutique called

As Hawi Turns awaits those visitors seeking new clothing for the Hawaiian life-style and is not for the weak at the knees. The shop also carries handmade crafts by Big Island artists. Across the street is **Kohala Health Food** which carries a hearty selection of herbals, local fruits and various gift items. Massage therapy is also available.

Next to As Hawi Turns is **Kohala Pacific Realty**, where visitors are welcome to stop in for free maps of the North Kohala region. On the other side of the street is the newly opened **Bamboo Restaurant**. Inside what was once the grand old Takata Store, built during the booming days of sugar cane, chef Michael Neff combines Pacific Rim dishes with flavors from as far off as Thailand to create his innovative style of cuisine. Farm fresh herbs and a next door bakery contributes a local flare to the food.

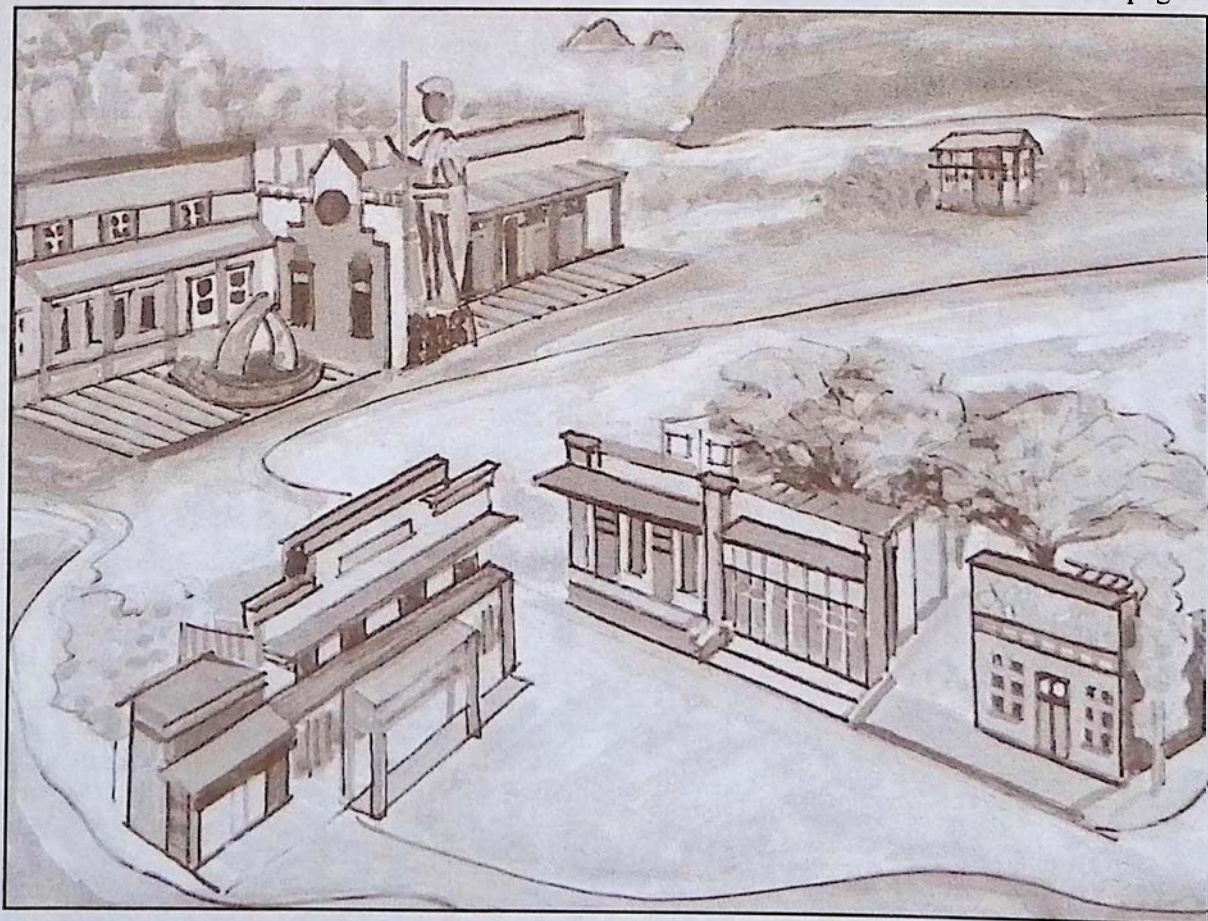
Just up the road a piece, smack dab in the middle of Kapaau Town is Hawaii's own local ice cream factory, **Tropical Dreams**. The owners, Lou and Deby Bleier, fea-

ture their fresh fruit sorbets and homemade ice creams and their original macadamia nut and honey butters in a parlor that fills one storefront in old Kapaau town. **FREE TASTES!!!** Across the street from the ice cream factory and also across from the King Kamehameha statue artist Gary Ackerman reflects on the landscape around him through his impressionistic style of painted art on display in **Ackerman Galleries**. Gary's combination of a free liquid style on canvas and varied techniques of painting allows him to successfully blend the colors of the natural environment. Both galleries also feature the works of other local artists.

If the drive up the Kohala coast and gallery hopping has got your appetite going at this point, maybe it's time to visit **Don's Deli** across from the King Kamehameha statue. Let Don prepare a sandwich from his large selection of cold cuts and cheeses or try one of his homemade vegetarian quiches or pastas. Don's new terrace is a great place to relax before heading north to Pololu Valley.

Upper Left: The King Kamehameha statue draped with leis in downtown Kapaau. **Below:** Impressionistic painting by Big Island artist Gary Ackerman of the North Kohala towns of Hawi and Kapaau.

continued on page 6



continued from page 5

CHRIS' BIKE ADVENTURES



MAUI • HAWAII • MOLOKAI

Your Choice of 3 Biking Adventures: The Kohala Mountain Adventure

This predominantly downhill bike trip, suited to all levels of riders boasts panoramic views of Mauna Kea, Mauna Loa and Maui's Haleakala while you pass through lush pasture lands and quaint North Kohala villages. The trip finishes at a remote beach for lunch after stopping for a view of majestic Pololu Valley.

The Mauna Loa Challenge

This 54 mile 12 hour adventure descends 11,000 ft. to sea level through rugged volcanic terrain, ranchland and dramatic coastal areas. Includes Kohala Mountain Adventure with breakfast and lunch included.

And now the all new...
Mauna Kea/Waipio Off Roader!!!

For Big Island Reservations
326-4600



December to April

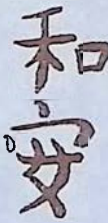
When you're done in town Hwy. 270 will lead you through North Kohala's fertile pasture lands, dense forests, and ultimately to Pololu Valley, which offers one of the best scenic view lookouts on the island. Along your way to Pololu there is **Wo On Gallery**, three miles past Kapaau town, which now occupies the old Wo On General Store, built by Chinese immigrants around 1920. The gallery hosts the works of only North

bamboo

LUNCH - TUES-SAT
DINNER - FRI & SAT
(808) 889-5555

Fresh Tastes
"Old Hawaii" Feeling
in Hawi town





Wo On Gallery

featuring:
wood, watercolors,
wearable art,
and much more

Devoted to the artists
of North Kohala
and showing work by: Sandra
Gray, Jim Parker, Lesley Patton
and Patrick Rankin

7 mile past the 25 mile marker
on 270 North
(808) 889-5002



Kohala Health Food & Nutrition Center

OFFERING...

HERBALS, VITAMINS, HEALTH
BOOKS, GIFT ITEMS, JEWELRY,
CANDLES, LOCAL PRODUCE

MASSAGE THERAPY
Open Mon.-Sat.
10:30 am- 6:30 pm

Located in Downtown Hawi
889-0277

Kohala artists, its youngest contributor being only 6 years old. Wearable art, sculptures, pottery, woodwork and watercolor paintings by Patrick Rankin can all be found at this local gallery.

If your interests lie in seeing all there is in this region **Chris' Bike Adventures** provides a "bike at your own pace" tour of the Kohala Mountains and its towns. The bike adventure is suited for all levels of riders and is complemented with a breakfast consisting of fresh fruits and baked goodies. A picnic lunch at the beach follows the ride.

While driving along the coastline of North Kohala remember that if the skies are clear, you may be able to catch a view of the island of Maui looming from the other side of the Alenuihaha channel, which separates Maui from the Big Island. Between the months of December and April visitors are almost guaranteed a humpback whale sighting off the coast of North Kohala. This region of the Big Island is a particularly favorite spot for our migrating friends from the north. Perhaps the favorite way to cap off the afternoon in North Kohala is to stop in Kaiwihae and enjoy a Pacific Rim Italian meal at the original **Cafe Pesto** located in the Kaiwihae Shopping Center near the harbor. The reasonably priced meals are complimented by wonderful pastas, fresh salads and hand-tossed pizzas as well as an original selection of delicious desserts. If you are planning on visiting the town of Hilo **Cafe Pesto** can also be found in the old S. Hata Building near the bay front.

Come and enjoy this peaceful region of Hawaii. You will see and taste the wonders it has in store for you.



**Kohala Pacific Realty,
Inc.**

(808) 889-5181



Specializing
in
North Kohala
Properties

Located in Downtown Hawi

As Hawi Turns

*Clothing for the
Hawaiian Lifestyle,
Local Crafts*

Located in downtown Hawi
across from Kohala Health
Food and Pumehana Flowers
889-5023





**ACKERMAN
GALLERIES**

ORIGINAL WORKS OF
ISLAND ARTISTS
ORIENTAL ANTIQUES
PRIMITIVE ARTIFACTS AND GIFTS

Open daily 9:30 to 5:30 p.m.
Both locations in Kapaau town Hwy. 270 North
(808) 889-5971



Tropical Dreams™ Ice Cream Factory & Cafe

OPEN DAILY Mon-Sat 11-5 Sun 1-5 Located in Downtown Kapaau on Hwy
270 North 889-0505 PO Box 557, Kapaau, HI 96755

Featuring...




Hawaii's famous homemade ice creams and fresh fruit sorbets
also serving "Hebrew National Kosher Hot Dogs"
& fresh baked pesto or marinara (pizza bread) focaccia
illy Brand pure Italian espresso & cappuccino

DIPPING STORES FEATURING ICE CREAM & FRESH FRUIT SORBETS

"Waipio Art Works" / "Hawaii Mac Nut Plantation" Honokaa / "Tropical Dreams" Kawaihae / "Sugar & Spice" Waimea / "El Gecko" Waikoloa / "Island Lava Java" / "Kealahewa Antiques & Art" Kealahewa

DON'S Family DELI

New...
Fresh Fruit
Smoothies &
Carrot Juice

10% OFF
all lunch orders over \$10
see our coupon

sandwiches, lasagnes, quiches,
pastas and chicken enchiladas
CAPPUCINO & ICE CREAM

CAFE LOCATED ACROSS FROM KING'S STATUE
MON-FRI 8-6 SAT/SUN 8-5
(808) 889-5822



whether you choose...

**HAND-TOSSED PIZZAS, FINE PASTAS
OR
SCRUMPTIOUS DESSERTS**

you will always get...

AN ADVENTURE IN TASTE

CAFE  KAHALA COAST

OPEN FOR LUNCH & DINNER
Kawaihae Center, On the Kohala Coast, 882-1071

100% PURE KONA™ COFFEE

Hand Picked, Sun Dried and Truly Graded

Did you know that out of the 20 million pounds of Kona Coffee bought and consumed every year under the name Kona only 2 million pounds of that coffee is actually grown here in Kona? And the **frightening fact** of the matter is...that most Kona coffee drinkers around the world have no idea that what they're drinking is a coffee containing 90% of something other than Kona coffee. It's time for this deceptive labeling and misuse of the Kona name to end. In an attempt to preserve the coffee growing heritage here in Kona and the gourmet repu-

Coffee Times



tation of our local coffee and to combat this widespread misrepresentation of the Kona name to sell counterfeit coffee we here at Coffee Times magazine unconditionally guarantee that the coffee you receive from us is farmer direct, contains only 100% Kona coffee and meets the State of Hawaii's highest grading standards. Enjoy the pure taste of the world's finest coffee and help preserve our local farm lands by buying only 100% Kona.



Taste our coffee while visiting Kona's largest coffee shop, Island Lava Java, on Alii Drive!!!

ORDERING INFORMATION

Type	Roast	Lbs.	Total
_____	_____	_____	\$ _____
_____	_____	_____	\$ _____
_____	_____	_____	\$ _____
_____	_____	_____	\$ _____
_____	_____	_____	\$ _____
_____	_____	_____	\$ _____

Delivery Charges \$ _____

Please add \$3.50 for 1st pound
& \$1.50 for each additional pound

Grand Total \$ _____

Shipping Address: _____

Please mail with check or money order to:
Coffee Times, P.O. Box 1092, Captain Cook, HI 96704
Please allow up to 1 week for delivery

PEABERRY

The finest flavored coffee bean available (The result of single bean growth in the usual two bean coffee cherry)
16.95/lb. 79.95/5 lb. 149.95/10 lbs.

EXTRA FANCY

The highest quality, high elevation, large bean coffee
15.95/lb. 74.95/5 lbs. 139.95/10 lbs.

FANCY

Excellent quality, smaller bean, high cupping standard
13.95/lb. 64.95/5 lbs. 119.95/10 lbs.

PRIME

The choice bean of most specialty Kona coffee consumers.
10.95/lb. 49.95/5 lbs. 89.95/10 lbs.

FLAVORED KONA COFFEE

Vanilla, Macadamia Nut & Chocolate Macadamia Nut
15.95/lb.

(please specify *medium, dark or espresso* roast)

WE SHIP WORLD WIDE

CALL (808) 326-7637

P.O. Box 1092, Captain Cook, HI 96704

Waimea Country

Between snow capped Mauna Kea and the Kohala mountains the green hillsides of North Kohala roll along under wispy white clouds, and afternoon rainbows frequently stream their way from the skies above Waimea. Inside this landscape herds of grazing cattle can be seen meandering their way through sloping pastures filled with cactus and dry underbrush as Hawaiian cowboys called paniolos still ride horseback and work the ranges.

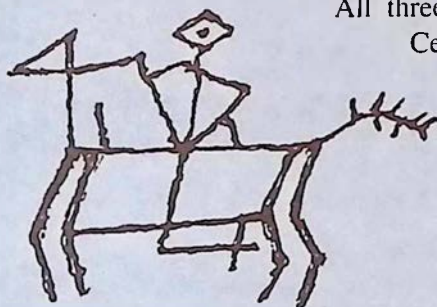
Ranching began in this region of the Big Island after King Kamehameha appointed, in 1815, a young seaman named John Parker to hunt and shoot the herds of wild cattle whose population had grown uncontrollably since their introduction to Hawaii in 1793. Parker, who accomplished his mission, managed to domesticate a herd of his own before marrying a Hawaiian chiefess. The marriage helped Parker to acquire the land that would later be used to found his 250,000 acre ranch in 1847. Today's existence of Parker Ranch as one of the largest ranches in the United States gives the outsider an idea of the magnitude of its size.

Today, the town of Kamuela, more often referred to after its district name Waimea, is a town that still surrounds itself with a ranching lifestyle. The brightly colored Victorian houses and shops, tidy yards filled with flowers and skeleton remains of wagons and wheels gives visitors the opportunity to see yet another sphere of the diversity of cultures that exist in Hawaii. Beginning a tour of Kamuela with a cup of java and a bite to eat at **The Waimea Coffee and Company** is a great place to start. Across the street at Parker Square, **Waimea General Store** hosts a wide variety of Hawaii Books, and is filled with cook and dinnerware, cards, stationery, and many other interesting nick nacks.

Make sure you don't miss stopping at **Cook's Discoveries** in Historic Spencer House and **Up Country Connection** Gallery of Art & Antiques as well as **Princess Kaiulani Fashions**.

All three shops are located in Waimea Center. At Cook's Discoveries the warm aloha of a 150-year-old restored home creates a unique setting for Cook's Discoveries' one-of-a-kind collection of treasures made in Hawaii by Hawaii's proud people. Look for

continued on page 10



'ART OF HULA'

Exhibit by Marie McDonald
At Cook's Discoveries April 4 - 11

Lei makers and hula dancers: Please protect Hawaii's native forests. This is the message behind Hawaiian floral authority Marie McDonald's unique print exhibit during this year's Merrie Monarch hula and chant competition on the Big Island April 4-11.

McDonald, a Smithsonian "living treasure" and author of "Ka Lei," the definitive book on leis of old Hawai'i, has turned her talents to block prints that depict gathering in the Big Island's upland forests of lehua, maile ferns and other native plants for hula. Her prints also celebrate treasured kumu hula (teachers) sharing their knowledge with students.



*Print of Forest Gatherers
by Marie McDonald*

McDonald's prints, exhibited for the first time during Merrie Monarch season at Cook's Discoveries in Waimea's Historic Spencer House, have a singular message: "Take care of the forest so that our keiki (children) and mo'opuna (grandchildren) will always have these wonderful things with which to work."

The show will be presented Monday through Monday April 4-11. There is no charge for the exhibit at Cook's Discoveries, which is open 10 a.m. to 6 p.m. daily; 10 a.m. to 4 p.m. Sunday.

McDonald will be on hand from 10 a.m. to 2 p.m., Wednesday, April 6, to discuss gathering of native plant materials for leis including liko, pala'i fern, pukiaawe, maile and 'a'ali'i. McDonald will also demonstrate lei making techniques and provide tips on how to grow your own plant materials.

To help beginners get started, a collection of lei making plants will be on sale, including pala'i fern, ohia lehua, akulikuli, Ola'a Beauty and Kika.

Sharing the Merrie Monarch spotlight at Cook's Discoveries
continued on page 11



Discover the Best of Hawaii AT COOK'S DISCOVERIES

Open daily 10 a.m. to 6 p.m.

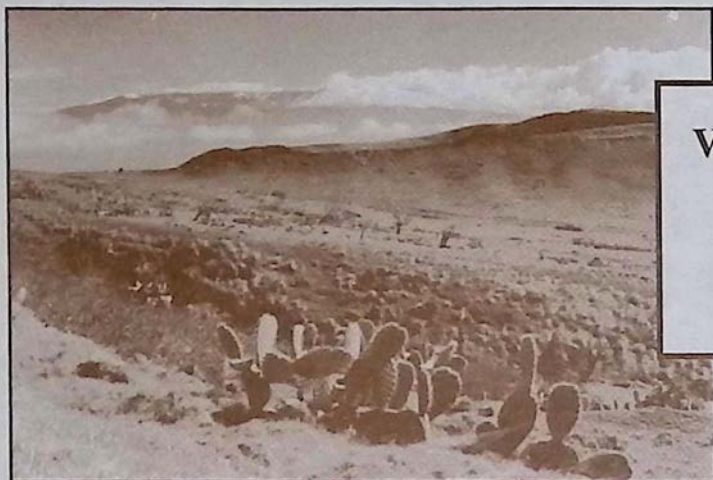
In Historic Spencer House circa 1850 - Waimea Center Next to McDonalds (Hwy 19)

(808) 885-3633

Discover proudly made in Hawai'i treasures including koa, sandalwood, coconut, mango & avocado boxes and bowls. Hawai'ian books and language tapes. Hawai'ian music and hula implements. Hawaiian quilts, collectibles and authentic reproductions of ancient palaoa, tapa beaters, fish hooks, squid lures. Island wear by Nike'u, Sig Zane and Island Cowboy. Woven lauhala. Feather, Ni'ihau, wiliwili, kukui and puakenikeni leis. Custom sterling jewelry by former Cartier goldsmith and Mings. Originals and prints by distinguished Island artists including Herb Kane, Harry Wishard, Kathy Long and Doug Po'olua Tolentino. Pure Organic Kona coffee, triple chocolate chunk cookies, fresh Waipi'o poi and poi cake, lemon-macadamia and guava-rum truffles. Even Poi Dog Biscuits! Many goodies under \$15! Remember... Buy Hawaii.



continued from page 9



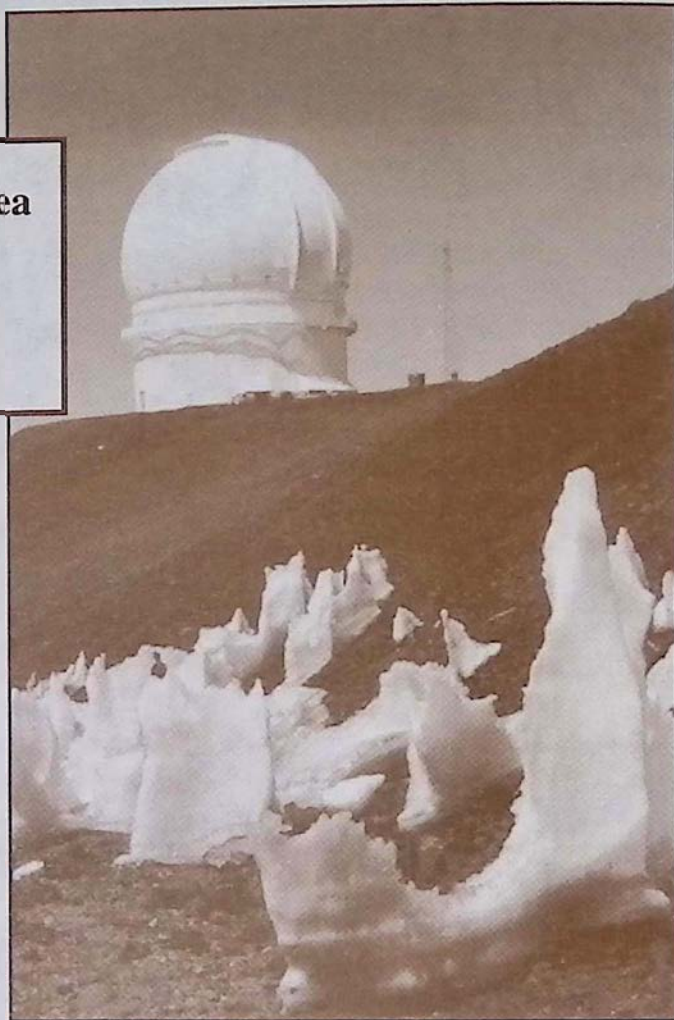
Views of Mauna Kea

photographed

by Michael Stewart.

Left: Paniolo Country

Right: Spring's Thaw



the Hawaiian flags across from Waimea McDonalds. The marushka hand-beaded jewelry is a must see at Up Country Connection, which is often the spot for some of Waimea's most spectacular art showings that feature the works of both local and visting artists. Princess Kaiulani, one of Hawaii's most beautiful Princesses, spent many of her favorite hours in Waimea. Now Princess Kaiulani Fashions in the Waimea Center (two doors from TCBY Yogurt) is a must for the discriminating shopper. Locally made designer muumuus and top national clothing brands provide a choice like no where else on the Big Island. And if women's apparel doesn't suit your fancy right now, see our 24K Hawaiian Gold coin jewelry or our unique gift items. You will also enjoy the antiques, from the turn of the century, that adorn this stylishly different boutique and the feel of beautiful Waimea, an early playground for Hawaii's royalty.

The **Kahilu Theatre**, located adjacent to Parker Ranch Shopping Center, continues to bring international artists and world class entertainment to the Big Island. See their ad for current show information.



Cook and Dinnerware
Hawaii Books
Yarns, Soaps
Cards and Stationery
Local T-Shirts

GIFT WRAPPING & SHIPPING
OPEN DAILY

Located In PARKER SQUARE Waimea
885-4479



WAIMEA COFFEE COMPANY

For a welcome break in your day
offering the best cappucino, gourmet treats & lunches
100% Pure Estate-Grown Kona Coffees
We mail-order anywhere!
1-800-854-5662 or 885-4472
In Waimea on Hwy 19
(across from Edelweiss Restaurant)



WELCOME MERRIE MONARCH HULA FESTIVAL VISITORS

No matter how you look at it...

Upcountry Connection *is your connection for dramatic hula images in bronze, original oil or print.*

"Hula Kahiko" bronzes by Lark Dimond-Cates



Waimea Center ~ Kamuela, Hawaii ~ Open Mon. - Sat. 10 AM to 6 PM ~ 885-0623

'Art of Hula' cont.

will be Hawaiian fashion designer Nake'u Awai of Honolulu, whose unique island wear is regularly featured at the Waimea shop as well as at his own popular shop in Kalihi. Nake'u will present a trunk show and sale in the Waimea shop Friday through Sunday, April 8-10. Also featured will be textile printing using traditional ohe kapala (carved bamboo stick tapa print designs) by "Laddy" Shim of Kohala. Shim will present a hands-on demonstration/workshop from 11 a.m. to 2 p.m., Friday, April 8 at Cook's Discoveries. Guests will be welcomed to use Shim's ohe kapala sticks and print their own pareau. His handmade pareau will be on exhibit and for sale.

Works by Herb Kane, Barbara Meheula, Doug Po'olua Tolentino, Puanani Van Dorpe, Pat Horimoto, Raymond Nakama, Ski Kwiatkowski, Harry Wishard, Moana Eisele, Doris Nakama, Kathy Nishida and the late Allen Akina including a replica of an extremely rare 'ie'ie helmet with mushroom-like protrusions by Pat Horimoto; a 4-foot koa canoe model with lauhala sail by Kana'e Keawe; Hawaiian tapa by Puanani Van Dorpe; tapa stamps by Moana Eisele; an authentic reproduction of a Lei Niho Palaoa by Raymond Nakama and a traditional pahu (drum) with coconut sennet and mano (shark) skin will complement the month's festivities. Cook's Discoveries is located in the Waimea Center in the Historic Spencer House across from McDonald's.

SEARCH FOR 1994 PANIOLO PARADE PA'U RIDERS

Hawaii's oldest and largest Paniolo (Hawaiian Cowboy) Parade, which for the first time will open the week-long, island-wide Aloha Festivals Big Island celebration is accepting applications for pa'u units.

Pa'u riders must provide their own horses and are responsible for the flowers and other decorations associated with the competition. For information and an application, call 885-8086.

Princess Kaiulani

FASHIONS WAIMEA

A Stylishly Unique Boutique

"We have a large selection of designer muumuus from size 4 to 26. Although the Victorian look of Princess Kaiulani is one of our primary lines, we also carry the bold look of Designs by Puamana and the new Elizabeth Kate Tahitian style muumuu.

Some of the other leading brand names that we carry are Alexander Brown, Zashi, Ann Ferriday, Northern Isles, Phoebe, Crazy Horse, Karen Kane, Back East, Jessica McClintock, Surya, Maggy London and more. Whether it's Ha-

waiian wear, a sweater, lingerie, jeans,

a casual outfit or a dress for work, you will

enjoy the latest in women's fashion at PRINCESS KAIULANI in Waimea. And when you buy... be prepared for many flattering compliments wherever you wear these clothes."

COME AND VISIT

Princess Kaiulani Fashions

in Waimea Center (near TCBY)

tel. 885-2177 (closed Sundays)

KAHILU THEATRE APRIL GRAND FINALE

The month of April brings the final curtain down on the 93/94 season at up-country Waimea's Kahilu Theatre. This intimate playhouse will present three performances during the month that you will not want to miss! JOHN O'CONOR will take center stage on Friday, April 15 in time to soothe your frazzled nerves after tax season. This engaging Irish pianist is a winner of both the Beethoven and Bosendorfer international piano competitions. He has been heard in every major music capital with the world's leading orchestras and conductors. Waimea audiences will be lucky to hear what the NEW YORK TIMES described as "... a memorable concert."

Ticket prices are \$17.50 and \$15.00. Remember curtain goes up at 8 PM.

The legend lives on! THE WORLD FAMOUS GLENN MILLER ORCHESTRA brings back the Big Band Sound for one performance on Friday, April 22 at 8 PM. Over 1,700 compositions in their repertoire keeps the band popular with both young and old. Come hear this 19 member band swing the night away! Ticket prices are \$27.00 and \$25.00.

The final performance of the season takes place on Friday, April 29. At 8 PM that evening, the curtain will come up on a magical voyage with IMAGO THEATRE MASK ENSEMBLE to a world of live human animation, where fantasy and whimsy are the height of entertainment! "... a kind of special smorgasbord of mask, mime, dance..." SAN FRANCISCO CHRONICLE Ticket prices are \$20.00 and \$17.50.

**IMAGO**

R E S E R V E D

CTR

A

101

ADMIT ONE

KAHILU THEATRE

885-6017

Parker Ranch Shopping Center, Kamuela, HI

JOHN O'CONOR (Pianist)**Friday, April 15, 1994, 8:00 PM**

Ticket Prices: \$17.50 & \$15

GLENN MILLER ORCHESTRA**Friday, April 22, 1994, 8:00 PM**

Ticket Prices: \$27.50 & \$25

IMAGO THEATRE MASK ENSEMBLE**Friday, April 29, 1994, 8:00 PM**

Ticket Prices: \$20.00 & \$17.50

SEC

ROW

SEAT

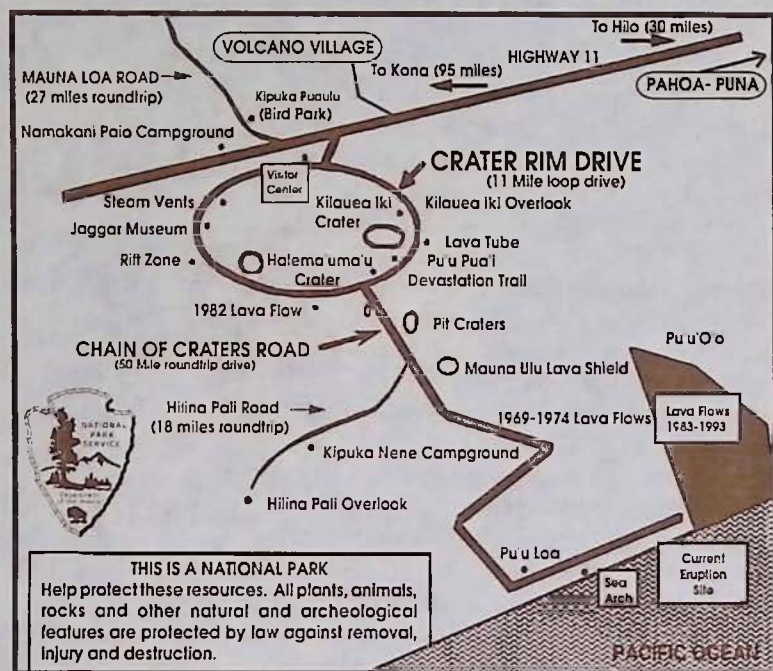
CTR

A

101

R E S E R V E D

Volcano Region & National Park Information



Volcanoes National Park has one entrance, off Route 11, 30 miles south from Hilo or 95 miles east from Kona. The park is open 24 hours a day all year round and requires a \$5.00 entrance fee per vehicle which is valid for 7 consecutive days. The hiker/bicyclist/bus passenger fee for people over 16 and under 62 is \$3.00.

When you enter the park during daytime hours you will

receive a park brochure at the entrance station. If you enter the park after hours you may pick up the brochure at the Kilauea Visitor Center which is located a quarter mile from the entrance on Crater Rim Drive. The visitor center is open from 7:45 a.m. to 5:00 p.m. daily.

Visitors are encouraged to take the time to carefully read the park regulations and guidelines. The volcano fumes that exist in the park may create a health hazard for pregnant women, infants and people with heart or respiratory problems. People at risk should avoid stopping at the Sulphur Banks, Halema'uma'u Crater and other areas where volcanic fumes are present.

Overnight trips in the park require a backcountry permit that can be obtained at no charge at the Kilauea Visitor Center.

Once inside the park enjoy the 10-minute movie on eruptions shown hourly at the visitor's center. Other attractions are The Thomas A. Jaggar Museum three miles inside the park along Crater Rim Drive, The Volcano House, Thurston Lava Tube and scenic vistas. Depending on the timing of your visit you might have a chance to see the volcano erupting. A 20 minute drive to the end of Chain of Craters Road and a short hike will get you to the eruption site. The park also offers many other hiking opportunities which are mapped out in the park brochure.

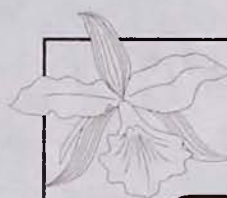
Before leaving you won't want to miss The Volcano Art Center, adjacent to the visitor center. The Art Center hosts the works of some of Hawaii's finest artists. The Center is also responsible for many of the art, cultural, environmental, and community activities happening in the park. The dates and times of these activities are listed in the Coffee Times calendar.

A reminder to drive slowly and carefully while touring the



RETREAT...RELAX...RELIVE...
HAWAII

P.O. Box 758 ~ Volcano, Hawaii 96785
808-967-7986 ~ 1-800-455-3803



Akatsuka Orchid
GARDENS

FREE GARDEN TOUR

Wander in awe through our covered garden of exotic orchids and island plants then help your self to a FREE orchid blossom. We feature Certified Hawaiian orchid plants, cut flowers & anthuriums. Take them home or we'll ship them for you!

LOCATED ON HWY. 11

22 1/2 MILES FROM HILO

(808) 967-7660 P.O. Box 220, Volcano, HI 96785

Aloha Volcano
Vacation Rentals

Modest to Luxurious
Accommodations,
Romantic Hideaways
for Two or Homes with
Great Family Value.

(808) 967-7683
1-800-845-LAVA

VOLCANO ART CENTER GALLERY

The finest in island arts and crafts
Located next to the Kilauea Visitor Center in Hawaii Volcanoes
National Park Open daily 9 a.m. to 5 p.m.

APRIL EXHIBIT: "'a pele"
by Lucille Cooper & Shirley Hasenyager
Artists' Reception: April 16, 5-7 p.m.

I DO! I DO! - MUSICAL COMEDY at the Kilauea Theater
April 22-23 & 29-30 at 7:30 and Sunday, April 24 at 3 p.m. Admis-
sion: \$8 Adults (\$6 VAC members) \$6 Children (\$4 VAC members)

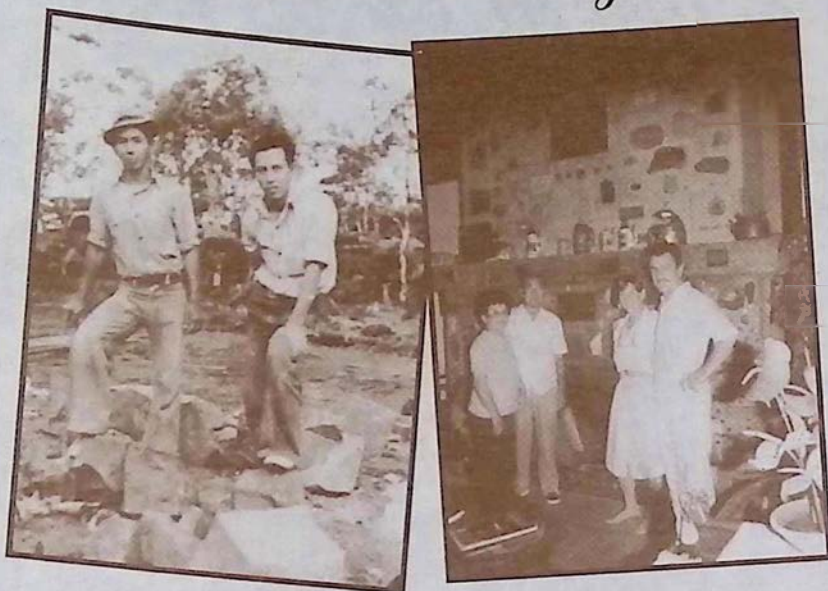
See Coffee Times Calendar for classes and workshops.
The Volcano Art Center is a nonprofit arts and educational
organization founded in 1974. Call 967-8222 for reservations.

CARSON'S
VOLCANO COTTAGE
Volcano's most private and inviting B&B



Experience The True Fantasy
Of Hawaii ~ Forested Garden
setting ~ Seperate Guest
Rooms & Cottages ~ Hot Tub ~
Wood Burning Stove ~
Amenities Without The Price
(808) 967-7683
1-800-845-LAVA

A Fireside Memory



Left: Photo of Mr. Hiraki (left) before he started to build the historic Kilauea Lodge Fireplace. c. 1937 **Right:** Lodge owners, Lorna and Albert Jeyte pictured today in front of the same fireplace with Mr. & Mrs. Hiraki.

park as it will help to protect Hawaii's endangered state bird, the nene.

Lodging, gas, camping supplies and dining all can be found in Volcano Village just a short drive from the park. When in the village stop by Wood Carver's Corner. This cozy shop is filled with wood arts from around the world including Native American and Hawaiian crafts.

Because of the remote location of the volcano, the numerous Bed & Breakfasts existing in the region are a favorite choice among visitors staying in Volcano. A complete listing of Volcano B & B's can be seen on page 29 of Coffee Times. A few particular favorites are My Island Bed and Breakfast, Carson's Volcano Cottages, Chalet Kilauea and Hale Ohia Cottages. If you are looking for seclusion, Carson's Volcano Cottages are tucked away in the region's rainforest and offers guests the most in privacy as well as a hot tub and even wood burning stoves to keep you warm on those cool volcano nights. Chalet Kilauea, The Inn at Volcano, features rooms decorated with art from around the world and even a treehouse suite, a unique alternative for couples looking for that romantic getaway. My Island Bed and Breakfast, located on a five acre botanical estate, is an 1886 missionary home offering guests the choice of rooms in either the main house or garden apartments. Located off of Hwy. 11 are the private Hale Ohia Cottages surrounded by bonsai-style gardens and moss

covered grounds. The suites and cottages are both spacious and comfortably outfitted.

Perhaps one of the most memorable dining experiences on the Big Island can be found at Kilauea Lodge, which features continental cuisine beside the historic fireplace of friendship. The mountain lodge also hosts twelve romantic rooms for overnight visitors. One spectacular stop you do not want to miss when you are in the volcano region is Akatsuka Orchid Garden. Seeing is believing when you arrive at this exotic and tropical garden. Visitors are welcome to free tours and complimentary orchids during their visit.

For Park Information Call: (808) 967-7311

For Eruption Update Call: (808) 967-7977

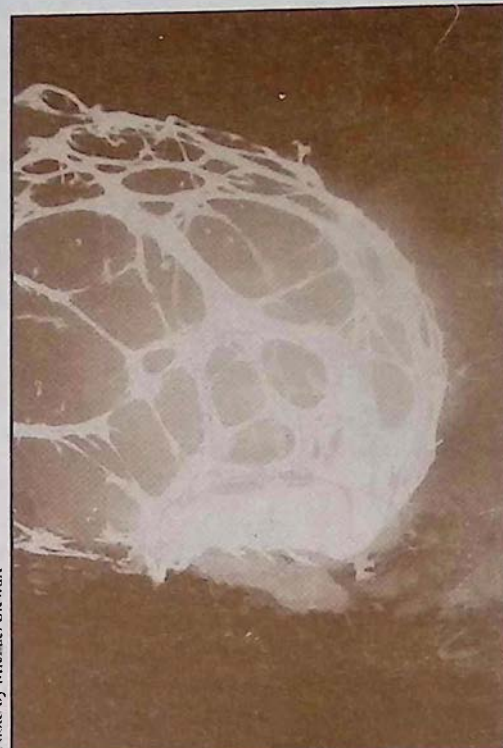


Photo by Michael Stewart

Pele's Picasso

MOLTEN IMAGES

Professional Island Photography
by Michael T. Stewart
Weddings, Portfolios, On Site Availability,
Fine Art Prints
(808) 326-7085



Woodcarver's Corner

Wood Arts, Hawaiian & Native American,
Crafts, Paintings, Gifts and more...

Located at corner of Haunani Rd. & Old Volcano Hwy.,
Wed. - Sun. 10-5, For brochure send 50 cents to:
Box 867, Volcano, HI 96785, 985-8518

No Booking Fee



967-7244

Volcano Reservations

SELECT STATE WIDE ACCOMMODATIONS

Bed & Breakfasts ~ Cottages ~ Vacation Homes ~ Condos
Your Key To Hospitality
BUDGET TO LUXURY ~ GREAT VALUE

Twelve Romantic Rooms ~
Fabulous Fireside Dining Nightly 5:30 - 9:00 p.m.



KILAUEA LODGE

...only minutes from Volcanoes National Park

VOLCANO VILLAGE ~ HAWAII ISLAND ~ (808) 967-7366

Chalet Kilauea - The Inn at Volcano



EXPLORE TREASURES FROM AROUND THE WORLD

Unique Theme Rooms ~ TreeHouse Suite ~ Vacation Homes
Jacuzzi ~ Fireplace ~ Library ~ Garden

Gourmet Breakfasts

967-7786

Afternoon Tea

The King's Coffee Proclamation of 1840

by Larry Douglas

In 1840 the Kingdom of Hawaii was in need of hard currency. The King, who was advised that the Hawaiian islands had over 500,000 acres perfect for the growing of coffee and that the world coffee prices were high, made the following proclamation:

"The people of Hawaii are now informed that there is a new article which is very valuable and that is coffee; people will do well to pay their land tax in coffee, rather than swine. Those persons who are in the pursuit of wealth would do well at present time by planting coffee. Those who raise coffee will find it the same to them as money!"

The rate of 5 pounds of coffee to the dollar for land tax payment was accepted after this proclamation and the price was promised not to fall for an extended period of time. At the time both swine and arrow root, which were not valued exports, were used as payment for land taxes. In 1841 the coffee proclamation ended arrow root and swine as a form of payment and started almost all Hawaiian farms big and small growing coffee which was capable of bringing to the small Kingdom of Hawaii good hard currency from the world marketplace.

The coffee brought from Brazil to Hawaii in 1825 by Governor Boki and John Wilkinson thrived in its new environment producing some of the largest, richest beans in the world. As the demand for coffee grew along with the price steamship arrivals from San Francisco became

a daily routine.

By 1850 Hawaiian coffee exports had reached an estimated 208,428 pounds for the year with most being shipped to San Francisco. In this same year the California gold rush was well on its way and Hawaii became San Francisco's grocery store for labor. Many of the whaling vessels and interisland ships became trans Pacific carriers giving many young Hawaiian laborers the opportunity to try their luck in the California gold fields. This left Hawaii with a severe labor shortage which effected every end of Hawaii business and caused the price of labor to soar.

The lack of labor however did not effect the coffee growers because Hawaiian coffee was now in demand by coffee brokers throughout the world including America, Japan, Russia and most of Europe. A grand cupping contest in Honolulu was held annually to determine which plantation grew the best coffee and coffee saloons on every island became popular spots to discuss world events and local gossip.

Hawaiian coffee did bring the hard currency that the kingdom of Hawaii so desperately needed in the 1800's. Today a renaissance is taking place as large and small plantations on the Big Island (outside the Kona coffee belt), Kauai, Maui and Molokai are all producing coffee for a world marketplace that has seen a revitalized interest for gourmet coffee. □



ROASTED FRESH DAILY

See Our Coupon for a
FREE POUND OF COFFEE

CAFE LOCATIONS:

The Bad Ass Coffee Co., 322-9196

Kainaliu Next to Crystal Star Gallery

The Bad Ass Coffee Co., 326-4637

Kailua Waterfront Row on Alii Drive

The Bad Ass Coffee Co. Kailua Warehouse 329-8871

Next to Giuseppe's Italian Cafe on Alii Drive

The Bad Ass Coffee Shack of Kaiwihae 882-7019

Above Cafe Pesto in Kaiwihae Shopping Center

INDEPENDENT DISTRIBUTORS

Hawaii Mac Nut Plantation Inc., 775-7201 (Honoka'a

Lower Lehua St.), Long's Drugs (In Hilo & Kona)

Keep In Touch, 885-7191 (Waimea The Parker Ranch Shopping Center), AND COMING SOON...

The Bad Ass Cafe in Kihei, Maui

The Bad Ass Coffee Company

1-800-338-7139 (808) 322-2646

KONA COFFEE FRITTERS

1 1/3 cups	water	4	large eggs
1 stick	unsalted butter	3 cups	peanut oil
1/3 cup	granulated sugar	1/2 cup	semisweet
1/8 tspn.	salt		chocolate chips
1/4 tspn.	cinnamon	2 tblspns.	Strong brewed
1/2 cup	unsweetened cocoa powder		100% Kona Coffee
			(at room temperature)
1 2/3 cups	all purpose flour		
2 1/2 tspns.	baking powder		confectioners' sugar
1/2 tspn.	vanilla		for dusting fritters

In a saucepan boil water with butter and granulated sugar until butter is melted and sugar is dissolved and let cool.

In a bowl combine salt, cinnamon, cocoa powder, flour, and baking powder and with electric mixer beat in butter mixture, vanilla and Kona Coffee at room temperature. Add eggs, 1 at a time, beating well after each addition. Chill batter, 1 hour, or until cold.

In a deep heavy saucepan heat oil over moderately high heat until a deep-fat thermometer registers 350 degrees F.

Fold chocolate chips into batter. Working in batches and using a 2-tablespoon-capacity ice-cream scoop, gently drop rounded scoopfuls of batter into oil and fry fritters, turning once after 2 minutes, 4 minutes.

Transfer fritters with a slotted spoon to paper towels to drain and dust with confectioners' sugar. Makes about 30 fritters.

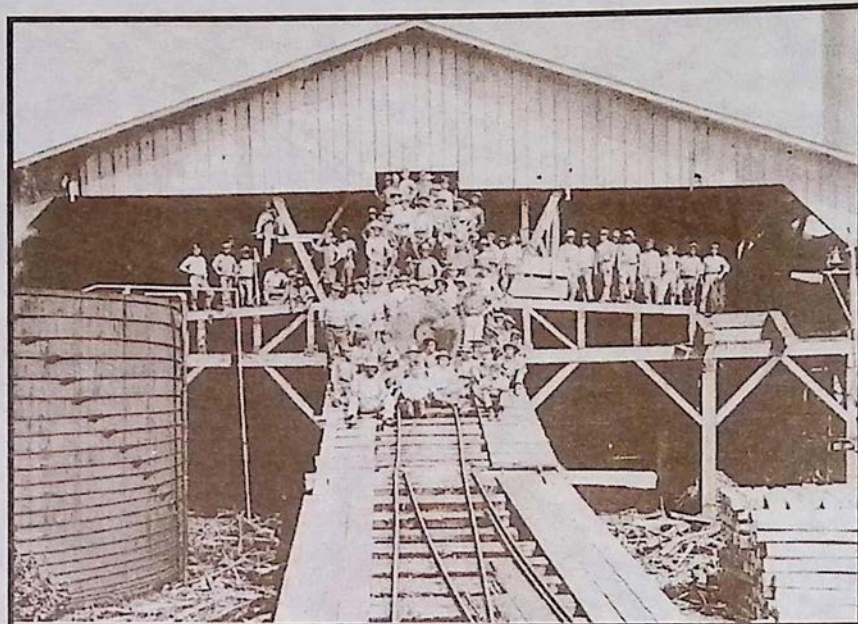
Historic Main St. Pahoa - Puna, Hawaii Quaint Shops, Local Food, Arts, Crafts, Theater

For visitors who want to experience the true feeling of old Hawaii, Pahoa village holds the key to this untouched past. First a rugged sawmill town then a sugar town and later a crossroad on the old railroad, Main Street Pahoa has maintained its western style storefronts and wood boardwalks in a charming turn of the century Victorian style.

Quaint shops from surf, to curio and restaurants span the flavors of the globe from Thailand, to Mexico and Italy and make Pahoa Village one of the most pleasurable and tasteful stops on the Big Island.

Call ahead to any of the friendly shops to see if there are any special events scheduled during your visit. Pahoa has the reputation of holding some lively and entertaining performances both on its Main Street and at the Akebono Theater, Hawaii's oldest theater.

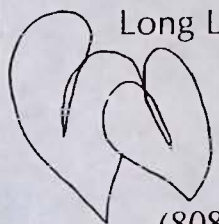
The countryside surrounding Pahoa is filled with natural wonders like the Lava Tree State Park, steam vents, groves of papaya trees and black sand beaches along the rugged Puna coast. Visitors are warned however that a prolonged stay in this Aloha time capsule may make leaving a very difficult task.



The Pahoa Lumber Mill (circa 1900-1917) photo courtesy of the citizens of Pahoa

Hawaiian Rainforest Garden & Gift

Send Fresh - Cut Tropical Anthuriums
Long Lasting - Direct From The Grower



1 DOZEN ELEGANT ANTHURIUMS
with tropical foliage 21.95

Includes Federal Express Delivery anywhere in the U.S.A.
VISA or MasterCard accepted

(808) 965-9576 or 1-800-473-7630

The Godmother 965-0055
Breakfast, Lunch & Dinner
8 a.m. to 11 p.m.

EVERYTHING HOMEMADE

Delicious authentic
New York-style Italian cuisine
Located in historic Pahoa Village

PAHOA HARDWARE

965-6459

OPEN 7 DAYS

CAMPING SUPPLIES

Plumbing, Electric, Nuts, Bolts,
Paint Supplies, Garden & More
P.O. Box 967, Main St.
Pahoa, HI 96778

NATURAL GROCERIES
PAHOA
Organic produce Health Foods
Open 9 - 9 p.m.
Sunday 9 - 6 p.m.

THE VILLAGE INN
HISTORIC PAHOA
BUILT IN 1910
P.O. BOX 1987 • PAHOA HAWAII 96778
(808) 965-6444
LODGING & HAWAIIANA
CURIO SHOP
\$39.95 double & up

FOUNDED 1917
AKEBONO THEATER
Local Performing Arts Center
Plays, Movies, Live Music
CALL (808) 965-9943
or
see Coffee Times Calendar for show schedule.

LUQUIN'S
MEXICAN RESTAURANT
Chili Relleno, Carnitas,
Tamales & Taquitos
FREE CHIPS & SALSA
with Dinner
OPEN DAILY
11 a.m. to 9 p.m.
965-9990

Naung Mai
Thai Kitchen
"We serve Cheng Mai,
Bangkok & Phuket style cuisine."
Vegetarian Entrees offered
Mon. - Fri. 12-8:30
Closed Sat. & Sun
965-8186

NATURAL EMPORIUM
PAHOA
Imports, Clothing,
Jewelry, Gifts,
Open 10 am to 6 pm

HAWAIIAN HEMP COMPANY
HEMP FASHIONS
CLOTHING
FOOD
PAPER
LITERATURE
& ART
(808) 965-8600
Pahoa Village
Send \$2
For our catalog of products
P.O. Box 2056, Pahoa, HI 96778

BAMBOO HOUSE
Unique Private Lodging
in Downtown Pahoa
Call
(808) 965-8322
For Information

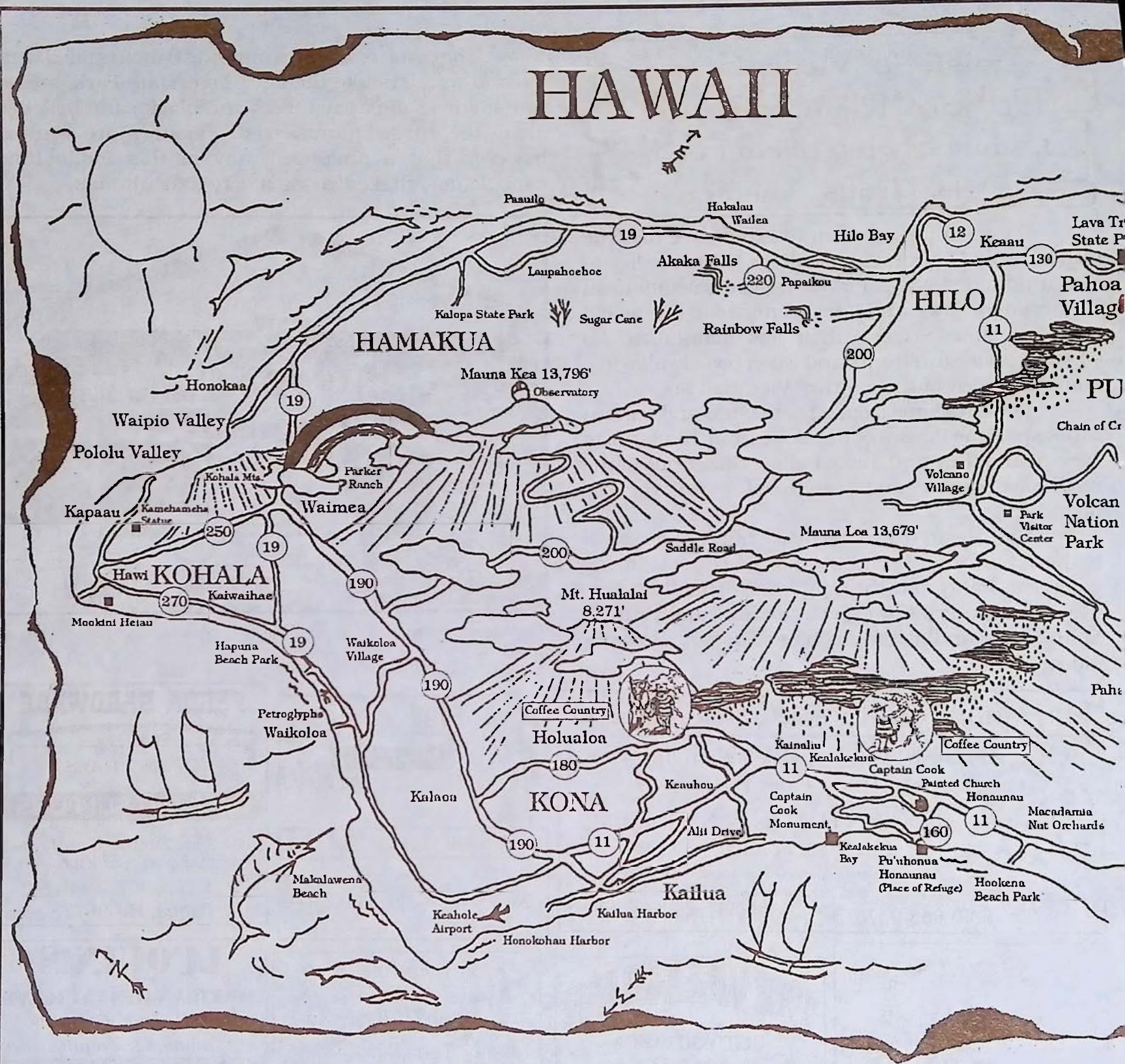


photo by Michael Stewart



photo by Michael Stewart

Carved Ki'i (images) at Pu'uuhonua O Honaunau (Place of Refuge) National Park (1)

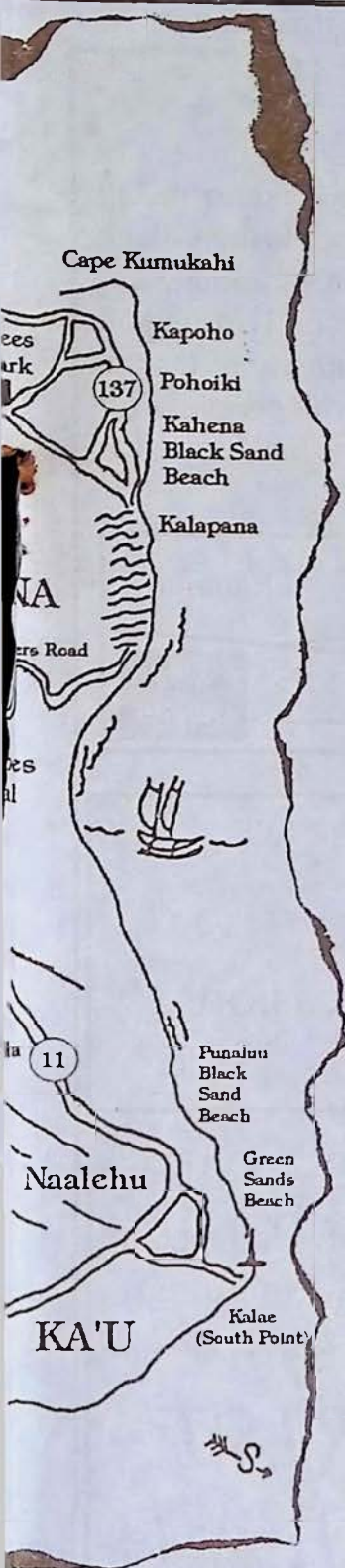


photo by Michael Stewart



photo by Michael Stewart



photo by Michael Stewart

What to see:



HISTORIC HILO

Early 20th century Hawaii happily lives on in the storefronts and buildings of this yesterday town. Outside the town are magnificent Akaka Falls and Hawaii Tropical Botanical Garden to the north.



VOLCANOES NATIONAL PARK

Home of Pele, the Hawaiian goddess of fire. A region of unique features, volcanoes and a diverse biosphere. See page 6 of Coffee Times for volcano information.



CAPTAIN COOK MONUMENT

The spot in Kealahou Bay where English navigator, Captain James Cook was killed in 1779.



PU'UHONUA O HONAUNAU

An ancient Hawaiian village that is now a national park. Located in south Kona. Stop and see the Painted Church along the way on Hwy 160.



WAIPIO VALLEY LOOKOUT

Spectacular views into a lush valley of waterfalls, rivers and cascading cliffs. (4WD, horse, or a hike are necessary for access into the valley)



WAIMEA COUNTRY

In the heart of Big Island ranch country this western style town sits at the base of Mauna Kea.



AKAKA & RAINBOW FALLS

Two separate waterfalls northwest of Hilo. Easily accessed by car and short enjoyable paved hikes.



HEIAUS & PETROGLYPHS

Both can be found on the Kohala coast. The petroglyphs can be seen by following a path on top of the lava rocks at the Royal Waikoloan Resort.



POLOLU VALLEY LOOKOUT

A northern valley lookout. The road there will take you through friendly N. Kohala towns and perhaps a view of Hawaii's neighboring islands.



PUNA DISTRICT

Hosts the rustic western style town of Pahoa in addition to wild roadside orchids, steam vents, Lava Trees State Park and black sand beaches.



SOUTH POINT U.S.A.

The southern most point in the U.S. It boasts a magnificent ocean side drive through rolling green hillsides filled with Holstein cows grazing above a coast line of rugged cliffs and crashing waves.

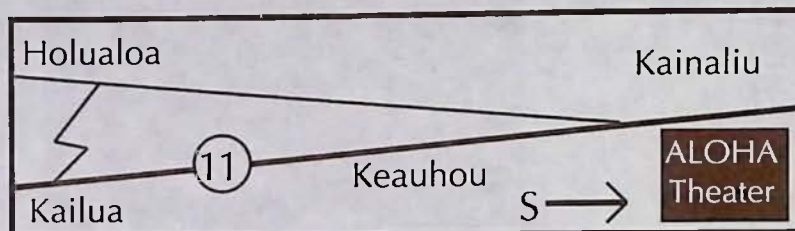
ALOHA THEATER COMPLEX IN KAINALIU



Located just a short drive south on highway 11 from Kailua-Town, central to Kona's coffee country, is the historic

Aloha Theater Complex built in 1932. Local theater performances produced by the Aloha Performing Arts Center and various other local community groups are on stage every month at the complex that also hosts a Cafe, Village Store and Dance Academy. At the cafe visitors can enjoy breakfast, lunch and dinner, which including many vegetarian specialties. A second floor bake shop turns out breads, cakes and cookies that fill the glass case just inside the front door to the theater.

Relax on the outside lanai while you sip a cup of pure Kona coffee, something very few restaurants on the Big Island actually serve. Wander next door to the Village Store and find Hawaiian gifts, fresh fruits and always a local tune playing through the speakers. To round off this Aloha experience, the local Academy of Dance run by Reni Damron is always alive with people of all ages practicing tap, ballet or jazz in the hall located at the north end of the complex.



BALLET

TAP

JAZZ



Damron's
ACADEMY
of DANCE



ALL AGES

(808) 322-8119

P.O. Box 325, Kealahou, HI 96750



**ALOHA VILLAGE
STORE**

8 a.m. to 6 p.m.

Monday - Saturday

8 a.m. to 8 p.m. Fri.

9 a.m. to 4 p.m. Sun.

322-9941

Great gifts for All Occasions

Groceries, organic foods, fruit (fresh & dried)
vitamins, teas, coffees, island music tapes



"DELICIOUS HOMEMADE GOODNESS"

Open for breakfast, lunch & dinner

8 a.m. to 8 p.m. Mon. - Sat

Sunday Brunch 9 a.m. to 2 p.m.

THE BEST BURGERS IN KONA

MEXICAN SPECIALTIES

FRESH BAKED BREADS, CAKES, COOKIES...

ESPRESSO BAR

INTERNATIONAL BEER & WINE SELECTION

IN THE HEART OF KONA COFFEE COUNTRY

322-3383

ALOHA PERFORMING ARTS CENTER
ALOHA COMMUNITY PLAYERS PRESENTS

P.O. Box 709, Kealahou, Hawaii 96750

Supported in part by a grant from the State Foundation on Culture and the Arts

JESUS CHRIST SUPERSTAR ~ A ROCK OPERA ~

APRIL 1, 2, 8, 9, 10*, 14, 15, 16,
1994

ADULTS: \$10 ~ STUDENTS & SENIORS: \$8

All evening performances at 8:00 P.M.

*Denotes 4:00 P.M. Sunday Matinee

Tickets available at: Skye's Hallmark Shop, Keauhou
Village Book Shop, Aloha Village Store and at the Door.

322-9924

Jesus Christ Superstar Takes the Stage at the Aloha

The Aloha Performing Arts Center announces April 1 will kickoff the run of the musical that turned this century upside down, "Jesus Christ Superstar". This Andrew Lloyd Webber and Tim Rice rock hit will be presented by the Aloha Community chorus at the Aloha Theatre in Kainaliu and will run April 1, 2, 8, 9, 14, 15, and 16 at 8 p.m. and April 10 at 4 p.m. Jerry Tracy is directing and Ken Staton is the music conductor. Eric Jaeger is the orchestra coordinator and Gloria Juan is pianist and rehearsal accompanist.

With nearly 100 people on the stage of the Aloha, this will be one of their largest productions ever mounted by the Aloha Community Players, this time with the Kona Community Chorus.

Cast in the title role is S. Khris Pokini with Marshall Gluskin as Judas, Victor Pisauro as Herod, Stephanie Tatum-Ford as Mary Magdalene and Sierra Spruce as the Priestess. Playing the role of Annas is Toni Mott with Peter played by husband Vince Mott. Dwight Ballard will portray Caiaphas while Ron Cook as Pontius Pilate and Purna Zei as Simon Zealotes round out the cast of principals.

Interpreting the rhythmic en-

ergy of this rock musical will be dancers under the direction of choreographer Una Greenaway. Dancers include: Kimberly Hanna, Viviana Valls, Nancy Redfeatjer, Melanie Pekala, Mariah Littleton, Jennifer Jelsing, Travis Marsh, Brady Beshore, Lindsay Sorensen and Lisa Mansour.

The Kona Community Chorus, nearly 60 strong, will bring alive the memorable music from this hit that rocked London in '69, then set Broadway afire and still remains in everyone's consciousness as dynamic and unforgettable.

The technical side of this production will highlight the talents of Gary Morphis as lighting designer, Brent Gantenbein and Gayle Keller as light technicians, Robin Hurlbut and Rebecca Marsh sharing the job of stage manager while handling props and wardrobe, respectively. Eugene Gall will serve as stage technical manager and dawn Ray as sound technician.

Tickets will be \$10 for adults and \$8 for students and seniors and can be purchased at Skye's Hallmark, Keauhou Village Book Store and Aloha Village Store. For group discounts call the Aloha Performing Arts Center office at 322-9924.



Back L. to R: Vince Mott, Marshall Gluskin, Dwight Ballard, Ron Cook, Victor Pisauro Middle L. to R: Sierra Spruce, Toni Mott (in experimental make-up) Front L. to R: Stephanie Tatum-Ford, S. Khris Pokini, Purna Zei.

KEEP KONA COUNTRY

BUY A FARM!!!

ARNOLD RABIN (R) (GRI)

PRINCIPAL BROKER

A REAL ESTATE CONCERN-HAWAII

(808) 322-3677 / FAX: (808) 322-6119

P.O. BOX 766, CAPT. COOK, HI 96704 / (RES) 328-2386

SERVING THE KONA COFFEE

COMMUNITY SINCE 1980

From the Southernmost District of Hawai'i Island

KA'U LANDING

(808) 928-6449

P.O. Box 160, Pahala, Hawai'i 96777

In-depth and ongoing coverage of the land, the people and the issues that affect the present and the future of our Big Island Communities.

☐ 1 year (12 issues) \$12 ☐ Sample Copy \$1.50

A TRULY RURAL DINING EXPERIENCE

WAKEFIELD
GARDENS
& RESTAURANT

Located in the heart of coffee country, Hwy 11 south to Hwy 160 (Painted Church & City of Refuge)

FREE BOTANICAL
GARDEN TOUR

Buy one get one Free Papaya Boat filled
w/ Tuna Salad & Herb Dressing!!!
see our coupon

Homemade sandwiches, soups, full
vegetarian fare, Kona Coffee, fresh baked pies

OPEN 11 am to 3 pm (7 days a week)

(808) 328-9930 P.O. Box 18 Honaunau, HI 96726

How Fast Do Humpback Whales Swim

by Dan McSweeney

This is a commonly asked question about the humpbacks, since most people are curious as to just how fast a 40-foot, 40-ton animal can get moving. That, in fact, would be the first thing to answer - how do they get moving. Humpbacks accelerate through the water by using their broad fluke or tail fin, which can measure 10 to 12 feet across and weigh in excess of 300 pounds. This fluke moves up and down to propel the whale through the water, unlike fish whose tails move from side to side. Using its fluke, the humpback can maintain an average swimming speed of four to six miles per hour, which is about the same pace as a fast walk or a slow jog for a human. By the way, humpbacks are capable of much faster swimming speeds, but usually only for short periods of time.

If the humpbacks use their flukes for swimming, then what purpose do their two long flippers serve? These flattened, paddle-like forelimbs or "pectorals" - which are longer than any other whale species' pectorals - are not usually used by the humpbacks for locomotion. Rather, they act as aquatic horizontal and vertical stabilizers which help the humpback steer through the water. The flippers also have other important uses. One is that they are rich in superficial blood vessels which probably encourages heat exchange between the whale and the water, much like arms do for humans. Also, these highly mobile and expressive appendages are important during mating behaviors, in providing contact between a female and her calf, with communication between whales, in facilitating the gathering of food, and as a defense against predators.

WHALE FACT "Not So Fast"

In terms of how quickly humpbacks can swim, they are not one of the fastest species. But they make up for it by swimming long distances between feeding and breeding grounds. It is the various members of the toothed whale species, like the dolphins, and particularly the killer whales, that are some of the

swiftest swimmers. They can exceed 15 to 20 miles per hour in the water for some distance, particularly when hunting prey. It's interesting to note that for some species of whales, speed has been important to their survival. This was true for the blue, fin and sei whale species. Unlike their slower right whale and sperm whale counterparts, these three species of whales could simply swim faster than the fastest whaling ships of the 1800's, thus guaranteeing their safety. It wasn't until the advent of the faster whaling ships and the explosive harpoon gun in the modern whaling era (post 1900) that the blue, fin, and sei whale species began to be decimated like the others around the world.

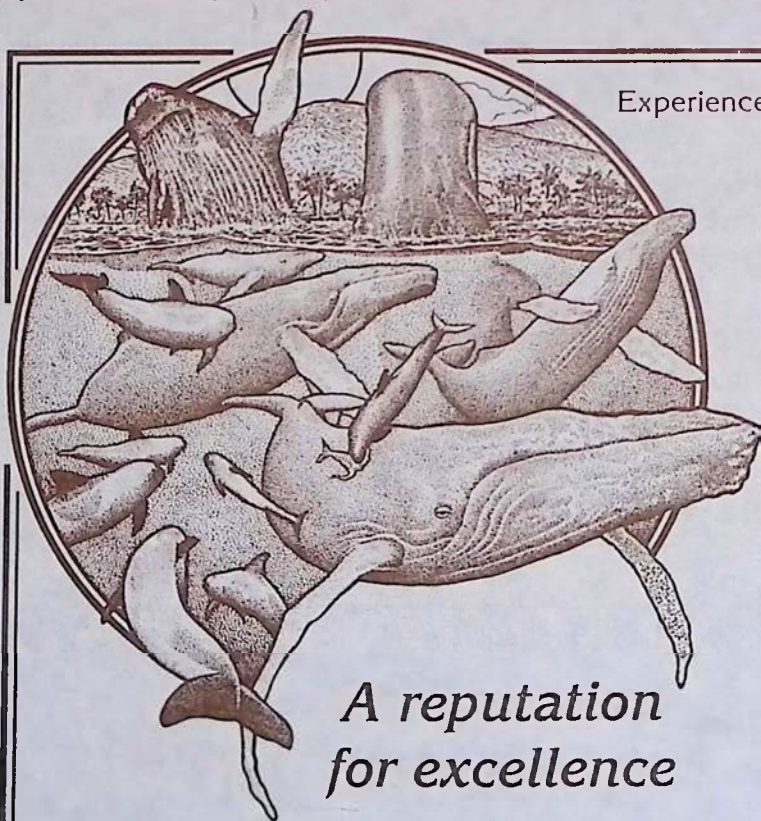


photo by Dan McSweeney

WHALE THOUGHT

Humpback whales were among the species that were not extensively hunted in the last century. But in this century, they were decimated everywhere around the world. They were easy targets for commercial whalers, because of their accessibility to the shoreline whaling stations and their predictable and habitual return to feeding and breeding areas. This slaughter went on until the mid 1960's, when hunting was finally halted by an international treaty. By this time humpback whale stocks had been reduced to just five to ten percent of the original number! Today, some 30 years later, the humpbacks seem to be making a comeback.

Some problems whales face in today's oceans include the limited resumption of high seas whaling, interactions with large scale fishery operations including entanglements in fishing gear and competition for food resources, vessel disturbance, and marine pollution.



*A reputation
for excellence*

3 Hour Daily Cruises
Special Family & Kamaaina Rates

HELP PROTECT THE WHALES.
Proceeds benefit whale conservation.

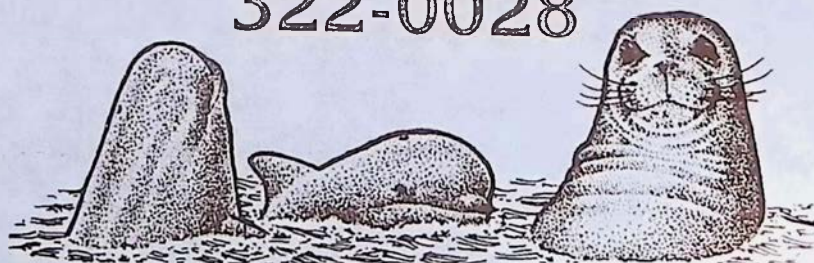
Experience is the difference between Whale Glimpsing and Whale Watching!

**Kona's Only Guaranteed
Year-Round
Whale Watch
With Capt. Dan McSweeney**

Experience the whales with a devoted professional researcher/guide who has spent the past 20 years and over 30,000 hours around Hawaii's whales.

Call for information & reservations:

322-0028

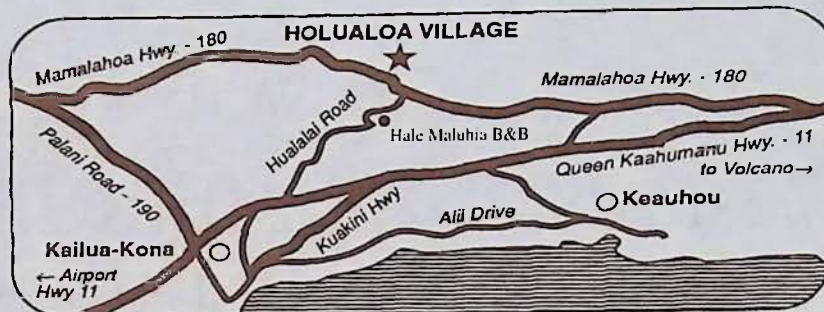


Holualoa, Aloha & Art

Days pass slowly in the artist's retreat town of Holualoa, almost like the gentle mountain breezes which weave their way through the groves of coffee trees lining the slopes of Mt. Hualalai. Steeped in natural beauty and tradition, this little mountainside coffee town blends a touch of today's art with a passion for the simpler life of the past. The village's many private galleries showcase the works of many local artists in a wide array of mediums.

When you are done visiting the galleries, the friendly local espresso bar, **Holuakoa Cafe**, will undoubtedly snatch an hour or two from your day and maybe more if you decide to indulge in the homemade cake and pastry selection. Every Thursday night the sound of acoustic guitars may be heard in the night air strumming over a chorus of 'gone happy' coffee drinkers packing the cafe for Holualoa's only night time entertainment. (Give cafe owner, Meggi Worbach, a call at 322-CAFE for an up to date scoop on her local entertainment schedule).

If you are looking for a place to spend the night, **Hale' Maluhia** (House of Peace) Bed and Breakfast is located below the village on Hualalai road. This



rambling home offers guests a sense of seclusion and a touch of paradise and is outfitted with several lanais, an outdoor spa, kitchen and even office facilities.

Make it a point to wander up for a visit to Holualoa you will love this adorable country town.



Live Music Every Thursday
Holuakoa Cafe, 7:00 to 10 pm

Hale' Maluhia Bed & Breakfast

**A Rambling Plantation Home Nestled
in the Heart of Coffee Country**

- *Affordable Rooms \$45-\$75
- *Private Baths
- *Country Setting
- *Hot Tub
- *Close to Village & Airport

For reservations or a FREE brochure write or call:

76-770 Hualalai Rd. Kailua-Kona, HI 96740

1-800-559-6627

(808) 329-1123, 329-5773, 936-3300, Fax 326-5487



Cafe owner, Meggi Worbach,
and the Holuakoa regulars.

Holuakoa Cafe Espresso Bar

LIVE MUSIC ON THURSDAYS 7:30 P.M. to 10:00 P.M.

~Fresh Kona Coffee~Local Pastries
and Snacks~In a purely up-country
Kona wake-up atmosphere

Open Mon-Sat 6:30am - 5pm

German, French and Greek spoken

322-CAFE

1 FREE
CUP OF
100%
PURE
KONA
COFFEE

See coupon insert

Experience The World's Showcase Of Hula In Hilo, Hawaii

31st ANNUAL MERRIE MONARCH FESTIVAL

April 3-9, 1994 SCHEDULE OF EVENTS

April 3	Coconut Island (Mokuola)	1:00 p.m.	Na Wahine Kupuna O Kau
	EMCEE Keoni Fujitani		Edith Kanakaole Tennis Stadium
	11:00 a.m. The Moke Brothers	6:00 p.m.	Royal Court Enters
	11:45 a.m. Darlene & J.J. Ahuna	6:15 p.m.	National Anthem - Hawaii Pono'i by Marlene Sai
	12:30 p.m. Kealakehe Serenaders	6:20 p.m.	Pule
	1:15 p.m. Keonaona	6:25 p.m.	Introduction of Judges
	2:00 p.m. Pauahi	6:30 p.m.	Miss Aloha Hula Competition
	3:00 p.m. Bradda Smitty & Charley Mahi with Gary Haleamau		Presentation of Awards
April 4	Hawaii Naniloa Hotel	April 8	Seven Seas Luau House
	12:00 noon Hula Halau O Hilo Hanakahi		9 a.m. - 5 p.m. Hawaiian Arts & Crafts
	Hilo Hawaiian Hotel		Pier I Kuhio Wharf
	1:00 p.m. Hula Halau 'O Lilinoe of California		11:00 a.m. Greeting Navy Ship
April 5	Hawaii Naniloa Hotel		Na Lima Lele 'O Na Kupuna
	12:00 noon Na Pua Me Kealoha of California		Hawaii Naniloa Hotel
	Hilo Hawaiian Hotel		9 a.m. - 5 p.m. Hawaiian Arts & Crafts Exhibit
	1:00 p.m. Moani Keala Onapua		12:00 noon Napua Hinano I Ulu A'e I Puna
April 6	Seven Seas Luau House		Hilo Hawaiian Hotel
	9:00 a.m. Hawaiian Arts & Crafts		9 a.m. - 5 p.m. Arts & Crafts Exhibit
	Hawaii Naniloa Hotel		1:00 p.m. Hula Halau O Hilo Hanakahi
	9 a.m. - 5 p.m. Arts & Crafts		Edith Kanakaole Tennis Stadium
	12:00 noon Napua Hinano I Ulu A'e I Puna		6:00 p.m. Royal Court Enters
	Hilo Hawaiian Hotel		6:15 p.m. National Anthem Hawaii Pono'i by Marlene Sai
	9 a.m. - 5 p.m. Arts & Crafts Exhibits		6:20 p.m. Pule
	12:00 noon Ke Ola Pono 'O Na Kupuna		6:30 p.m. Hula Kahiko Competition
	Edith Kanakaole Tennis Stadium	April 9	Mooheau Park
	6:30 p.m. Royal Court Enters		Moku O Keawe Cultural Fair
	6:45 p.m. National Anthem - Hawaii Pono'i by Marlene Sai		Seven Seas Luau House/Hawaii Naniloa/Hilo Hawaiian
	6:55 p.m. Pule		9 a.m. - 4 p.m. Hawaiian Arts & Crafts
	7:00 p.m. The Merrie Monarch Singers		Downtown Hilo
	8:00 p.m. Hula Halau O Kaholoku		10:30 a.m. Royal Parade
	9:00 p.m. Ato'oi Marama		Edith Kanakaole Tennis Stadium
April 7	Seven Seas Luau House		5:30 p.m. Royal Court Enters
	9 a.m. - 5 p.m. Hawaiian Arts & Crafts		5:45 p.m. National Anthem Hawaii Pono'i by Marlene Sai
	Hawaii Naniloa Hotel		5:55 p.m. Pule
	9 a.m. - 5 p.m. Arts & Crafts Exhibit		6:00 p.m. Hula 'Auana Competition
	12:00 noon Na Lima Lele O Na Kupuna		Introduction of Kumu Hula
	Hilo Hawaiian Hotel		Presentation of Awards
	9 a.m. - 5 p.m. Arts & Crafts Exhibit		

*Open Flame sates, classic
Indian style curries & stirfry*

*Located in the Banyan Court Mall
on Alii Drive in Kailua-Kona*

*"SIBU CAFE serves the best and the
most interesting, moderately priced food in
Kailua-Kona"*

Hawaii Handbook '92



75-5695 Alii Drive, Kailua-Kona, HI 96740

*Specializing in Indonesian and
Southeast Asian Food Since 1982*

*GARDEN FRESH
VEGETARIAN SPECIALTIES
AVAILABLE
TAKE OUT OR EAT IN*

*Open 11:30-9p.m.
(808) 329-1112*

Hula

A Historic Preview To Merrie Monarch

No one is quite sure when the hula began but legends lead us to believe that the dance dates back to the early times of the Hawaiian civilization which began almost one thousand years ago. These dances were performed in ceremony to honor the gods, ali'i, and many forms of nature as well as providing entertainment in the village. Because of its ceremonial purposes in honoring the gods and the ruling class the hula was often placed under strict kapu (tabu) by the ali'i. The hand and arm movements were kept in pace by the feet and describe the stories of the mele hula (rhythmic dance chants that accompanied the hula).

Hula was taught by a kumu hula (a skilled man or woman who taught the hula) in a halau hula (thatched structure for teaching the hula). Inside the halau hula was usually a kuahu (altar) with a block of lama wood covered with yellow kapa on it. Students of the hula as part of their training would ceremonially gather greens in the mountains and place them on the altar before practicing the hula. This period of instruction was usually done in seclusion and under kapu. At the end of hula training students usually graduated through a ritual called the uniki that included a bath in the sea and a sit down feast of ai-lolo where they ate a pig prepared especially for the ceremony. Because the instruction of hula was under the watchful eyes of the gods the kapu was always lifted by dancing and chanting the hula that was learned over the training period.

Instruments that were often included with the hula were: kala'au (hula sticks), papa hehi (footboards for stamping the feet), 'ili'ili (tini round stones clicked between the fingers), 'ohe ka'eke (bamboo pipes), pu'ili (bamboo rattle), 'uli'uli (gourd or coconut filled with shells or small rocks), 'ulili (three gourd rattle), anklets (dogs' teeth tied onto a net and worn around the ankles), pahu (wood drums), puniu (coconut shell knee drums), ukeke (musical bow made of two or three strings joined to a wood board), 'ohe-hano-ihu (nose flute made from bamboo), ipu hokiokio (gourd whistle), oeoe (a roarer that was made out of a small coconut shell with holes and attached by a long cord was swung by children), and a chonch-pu (shell trumpet that was used to call people together for a special event

such as a hula ceremony).

The ancient traditions of hula lasted until the missionaries began arriving in 1830. In their teachings the hula was considered to be offensive and objectionable to their Christian beliefs and every attempt was made to rid Hawaii of its dance. Surviving however, were the kumu hulas who still taught the hula in the countryside away from the mission centers. Ceremonies were carried on in the homes of elders who would invite the dancers in for entertainment. It wasn't until 1883 that the hula was reintroduced to mainstream Hawaii when King Kalakaua made the dance a part of his coronation ceremonies.

Much of today's hula is danced to songs or melodies with lyrics in both Hawaiian and English rather than in the traditional mele hula. These forms of hula came about during the period between 1930 and 1960 to please the visitors of Hawaii. The exception is the Merrie Monarch Festival held each year in Hilo, which is a wonderful tribute to the traditional period of hula kahiko (the ancient dances) and involves Hawaiian instruments and the mele hula taught by the kumu hulas of today.



This print depicts an early hula dance by keikis (children) in Hawaii with men playing pahu (drums). The interesting feature being that this print is believed to have been drawn by the reverend William Ellis in 1836, six years after the missionaries arrived and began teaching against the hula.



The tropical garden setting of the Querencia Spa Tea Room complete with lily pond, waterfall and Jacuzzi is located off Hwy. 160 in Honaunau, just minutes from Place of Refuge National Park and Painted Church.

**OFFERING AN EVENING
IN PARADISE**

COUPLES/SINGLES

(808) 328-2569

Located in Honaunau-Kona
mat. 2225 mat. 3053

The Night Bloomer

Jacuzzi, herbal facial, full body massage

The Double Lilly

Jacuzzi, herbal facial, full body massage, beverages and light pupus

Narcissus

Jacuzzi, herbal facial, full body massage, beverages, light pupus and

a catered gourmet dinner in the Tea Room

Full Therapeutic Body Work, Kamaaina Rates, Insurances Accepted

**QUERENCIA
SPA**

Featuring...
skin brushing,
salt scrubs,
herbal wraps,
spirulina packs,
hydrotherapy,
licensed therapists
ALSO AVAILABLE
micro-current facials

EAST HAWAII AND HISTORIC HILO

When you talk about the old Hawaii, at least the one that hasn't been touched as much today by the long arms of commercialization and development, you cannot help but to mention the East Coast on the Big Island. At the center of all this is Old town Hilo, seeing a revitalization of spirit thanks to the effort of the Downtown Hilo Organization is busy restoring and preserving the storefronts of this yesterday town. Aiding this effort are the wealth of new businesses occupying Hilo's old buildings.

One of the brightest spots has been the renovation and remodeling of the S. Hata Building by **Cafe Pesto**. This new restaurant has maintained the building's Renaissance Revival style of architecture and filled the air with smells of wood oven baked pizza and Pacific Rim Italian cuisine.

To add to this old Hawaii feeling are the daily Suisan Fish Market Auction and the Hilo Farmer's Market which held every Wednesday and Saturday in Downtown Hilo. One of the favorite fine dining spots in downtown Hilo is **Roussels**, open nightly and serving French Creole Cuisine. When the shutters and doors open every day at dusk the aromas of fine cuisine will lure you into this wonderful and intimate restaurant that is reminiscent of those eateries found in the New Orleans French Quarter.

Outside the town to the north are the Hawaii Tropical Botanical Garden, located along a 4 mile coastal scenic route, and Akaka Falls with its self guided pathways that take visitors over ravines and past several other waterfalls before ending up at the grand daddy of them all, Akaka.

When you are done sight seeing, lodging in Hilo is a snap and can accommodate every type of visitor. The magnificent and luxurious **Hale Kai Bed and Breakfast** on the bluff above the ocean overlooks Hilo's premier surf spot, Honolii. Expect nothing less than gourmet breakfasts and plenty of privacy. Hale Kai also has available a private cottage facing a pool and ocean. If you are looking to stay within

walking distance to downtown Hilo stop in at the affordable **Wild Ginger Inn** which features a jungle garden and stream setting overlooking Hilo Bay. The 1922 **Haili House Inn**, located across from the Lyman museum, is uniquely decorated in vintage Hawaiian eclectic decor and is one of the most popular lodging opportunities for visitors seeking that

feeling of old Hilo during their overnight stay. If a stay in the Hawaiian countryside is what you are seeking, head seven miles north out of town to Papaikou and check in at **Hale Lamalani** vacation rentals. Situated at 1,000 feet above sea level this country retreat offers plantation style lodging with all the serenity one could ever desire.

After leaving Hilo you don't want to miss the drive north to Waipio Valley which takes you over scenic gorges that were once crossed by cane hauling trains in the hey day of sugar cane production. The plummeting waterfalls and river mouths under the extensive bridge systems leading north up the Hilo Coast are definitely an awesome sight. Akaka Falls State Park and the village of Honamu can be reached by taking Hwy. 220 off of the main route, Hwy. 19 north. See the map. Once you reach the Park a short paved hike will trail you past a network of smaller waterfalls, lush and colorful tropical foliage to the plummeting Akaka Falls. Its accessibility and grand size make Akaka Falls a popular stop along this eastern coast.

One of the best ways to experience this region of the Big Island is to let **Blue Hawaiian Helicopters**, which flies out of Hilo airport, whisk you away into flight. Discover by air Hamakua's remote and beautiful waterfalls and valleys. The Blue Hawaiian Helicopter's new million dollar ASTAR jet helicopter is designed especially for touring. In addition to the smooth and comfortable flight, your tour experience is personally recorded on a complimentary video. Make sure you take along the coupon insert inside Coffee Times to receive a free color poster along with your flight.

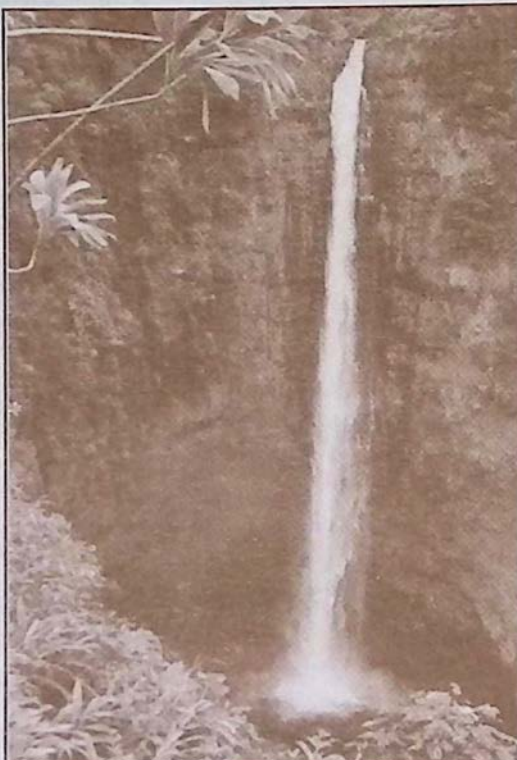
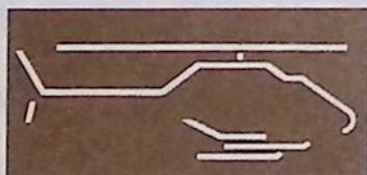


photo by Michael Stewart

BLUE HAWAIIAN HELICOPTERS



FAA CERTIFIED AND INSPECTED AIR CARRIER

**EXPERIENCE HAWAII'S REMOTE BEAUTY
UP CLOSE IN A NEW MILLION DOLLAR
ASTAR JET HELICOPTER**

- ~ Complimentary VHS Video filmed live by our wide angle Heli-Cam™ system
- ~ Featuring Hawaii's newest and only air conditioned jet helicopter fleet
- ~ Family owned & operated - we take pride in providing the highest quality experience at the best price

FLIGHT INFORMATION:

Big Island 961-5600
Maui 1-800-745-BLUE (2583)

1940's Plantation
style B & B
with jungle
garden &
stream. A
nonsmoking Inn.

*Wild
Ginger
Inn*

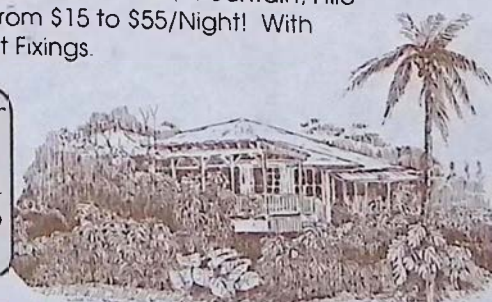
\$39 private
bath double
with breakfast.
100 Puueo St.
Hilo, HI 96720
Call 808-935-5556

BED & BREAKFAST

Hale Lamalani (House of Heavenly Light)

A Hawaiian Hideaway, Vacation Rental & Hostel
Serenely situated with Inspirational Ocean, Mountain, Hilo
Bay and Volcano Views from \$15 to \$55/Night! With
Breakfast Fixings.

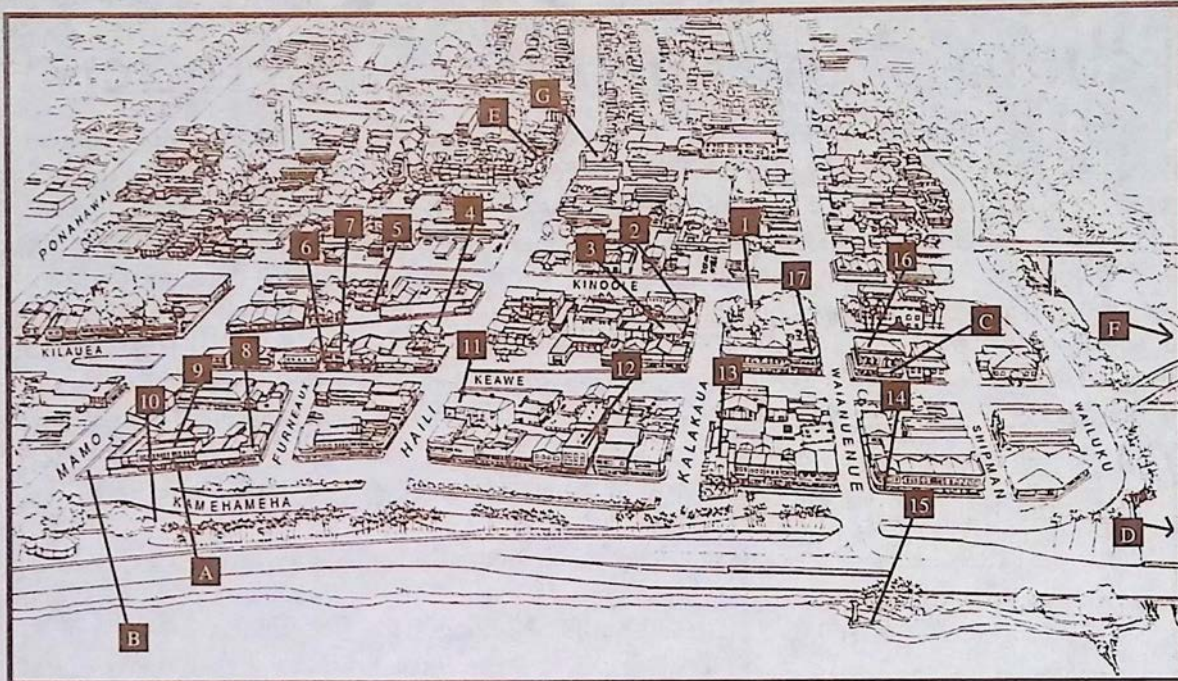
Located 5 miles north of
Hilo above Botanical Gar-
den and before Akaka
Falls at the gateway to
Hamakua.



Phone/Fax: (808) 964-5401, Outside Hawaii 1-800-238-8BED
R.R. 1 Box 206, Papaikou, HI 96781

Historical information and map provided by the Downtown Hilo Organization whose interests involve the preservation of Old Hilo, Hawaii.

Today, historic Downtown Hilo is alive and bustling with renewed energy. New and old businesses alike are meeting the challenge of revitalizing our city center while preserving the historic character which remains very special.



1. Kalakaua Park
2. Old Police Station
3. Hawaiian Telephone
4. Central Christian Church
5. Taishoji Soto Mission
6. Furneaux Lane
7. Ancient Order of Foresters Building
8. Furneaux Building

- A. Cafe Pesto (*Pacific Rim Cuisine*)
B. Hilo Farmer's Market
C. Roussels (*French Creole Cuisine*)
D. Hale Kai B&B
E. Haili House Inn
F. Wild Ginger Inn
G. Lyman Museum



Festo

OPEN FOR LUNCH & DINNER
Historic S. Hata Bldg., Hilo Bay, 969-6640
Live Hawaiian Music on Sundays, 6pm - Closing

(808) 969-7378

Relax in downtown Hilo's only B&B.
Uniquely decorated in vintage Hawaiian eclectic decor.
Located across from Hawaii's famous Lyman Museum

Room rates begin at \$75/night

Double
occupancy is
\$80 and up

★ ★ ★ ★

A 4 Star Bed & Breakfast on the bluff facing the ocean
and overlooking Hilo Bay and Honolii surfing beach
VERY PRIVATE, POOL, JACUZZI, BREAKFAST,
Private Baths, Well Decorated Rooms

111 Honolii Pali, Hilo, HI 96720

(808) 935-6330

Fax 935-8439

ROUSSELS

FRENCH CREOLE CUISINE



"Pure Delight"

*"Like Finding
A Hidden Treasure"*

*"Ask Anyone
About It"*

"Hilo Side Means Roussels' Side"

Serving Dinner Nightly ~ Reservations: 935-5111
60 Keawe Street ~ Historic Downtown Hilo

HONOKAA

CURIO

TRADITION

SIMPLICITY

SINCERITY

For years the town of Honokaa sat idle, its home town theater empty, local storefronts ghostly quiet, and streets void of the bustle that once rumbled down Mamane Street during the boom days of the Hamakua Sugar Company, an industry that for the last century has been the life blood of the people in this region. Since the decreasing activity of sugar production over the years and the recent decision this year to halt sugar production all together, the local citizens of Honokaa have redirected their energy and begun one of Hawaii's most spirited move-

ments of rejuvenation. Local merchants have taken the initiative to reopen some of the closed doors in this picturesque town, including the local ice cream parlor, now called **Simply Natural**, outfitted with an old fashioned soda fountain and spinning stools. Other shops such as **Hale O'Kauwehi**, **Rainbow Nation** and the **Honokaa Trading Company**, as well as many curio shops overflow with Hawaiian memorabilia, local crafts, and wearable arts. Home town cooking flows out

of **Mateo's Pizza**, **Jolene's Kau Kau Korner**, and **Mamane Street Bakery** to add to the distinctly local flavor of what pizza parlor owner, Alex Mateo proudly calls, "The New Honokaa". Included in this new Honokaa is the town's farmers market that has become a weekly event in the downtown area in front of the Historic Botelho Building. The market is open each Saturday of the month.

As Hawaii's old theaters are becoming more and more popular the citizens of Honokaa celebrated the reopening of their own **People's Theater**. The doors have officially been opened and evening feature films can be caught every Friday and Saturday evening at Honokaa's historic theater.

Also located in Honokaa is the **Hawaiian Macadamia Nut Plantation** which is located down the hill from Kau Kau Korner. The plantation allows visitors the opportunity to view the inner workings of a macadamia nut factory. Factory creations fill the store shelves and will undoubtedly make your taste buds dance when you try them. Also featured is the plantation's own bake shop.

Departing every morning from the Hawaiian Macadamia Nut Plantation is the local tour group, **Hawaii Resort Transportation Company** that takes visitors into Waipio Valley for either horseback riding or a van tour of Hawaii's most dramatic sight.

Legend has it that it was in Waipio Valley, "the land of the falling water", the great King Kamehameha, as a young boy, received his leadership training and first learned to surf. Today, family ohanas, "houses", still dot the landscape which is separated by a river that leads

It's the return of HISTORIC PEOPLE'S THEATER

Feature Films Now Playing
every Friday & Saturday
in Downtown Honokaa

775-0000

**HONOKAA
FARMERS MARKET**
Every Saturday
in Downtown Honokaa

Open Daily
in Honokaa



Banana Taro
Pancakes
Fresh Deli
Sandwiches
Old Fashion
Ice Cream Sodas
Soups of the Day
Hilo Homemade
Ice Cream
Even Taro Ice
Cream

See our coupon for a free
old fashion ice cream soda
Now Serving Breakfast
775-0119

**Mateo's
PIZZA**
Open Daily at 11 a.m.



SPECIALS
2nd Medium \$7.00
2nd Large \$9

Spaghetti
Salads
Veggie Pizza

HONOKAA
775-0944

rainbow
NATION
Specializing in
Tahitian Quilts
& Pareo's
OPEN DAILY

P.O. Box 949, Honokaa, HI 96727
(808) 775-7742



Located in
Honokaa

Open
Mon - Sat
10 am - 8 pm

Serving the Island's Favorite
Local and American Dishes
What better place to share
a little something with the
community and travelers
from afar.

dine in **775-9498** take out

**MAMANE
STREET
BAKERY**

• Cafe •



Fine Quality
Baking,
Quiches,
Focaccias,
Croissants,
Desserts,
Pastries,
Cookies,
Espresso,
Cappuccino

Wholesale and Retail
Located in
Downtown Honokaa
(808) 775-9478

Hale
O' Kaurwehi

Hawaiian Made
Clothing, Arts & Crafts,
Shop and Galleria

Across from Hasegawa Store

OPEN DAILY 10:00 AM TO 6:00 PM,
Closed Wed. & Sun.

Fely Kaluhiokalani - owner

Ph. (808) 775-0255

The Treasure Shop
Featuring...
A little bit of this and a
little bit of that!
Antique & Craft
Co-op.
Open Daily
Located next to Simply
Natural in Honokaa
775-8101

"NA PA' ALOHA"
CARDS, GIFTS, SOUVENIERS



Collectibles, Vintage
Sheet Music, Original
Works of Art, Children's
Quality Books & Toys,
Shell Leis, Baskets,
Unique Crafts

HONOKAA TOWN
(Across from Bank of Hawaii)
Open Weekdays and Sometimes Sundays
8:30 AM - 4:00 PM
(usually)
BILL & MARILOU IKAICA
775-9173 or 936-7483

HAMAKUA

SUGAR NUTS WATERFALLS TRANQUILITY

into the open sea. Local farmers and their families continue to make their way of life from farming taro and fishing off the sandy shores of this peaceful and remote valley floor. The only way down into the valley is by four wheel drive or by walking the literally breathtaking road down and up. An experienced and knowledgeable guide from Hawaii Resort Transportation Co. can make your trip an interesting as well as easy one.



EARLY WAIPIO VALLEY VILLAGE PRINT - engraving by Doms, circa 1785.

Outside of Waipio Valley and Honokaa town are other early and small settlements of the Hamakua region such as Paauilo, Kukuihaele and Laupahoehoe all filled with a rich and local culture that happily survives in this region of the Big Island.

New doors will continue to open for all of Hamakua as a period of change sweeps through the land with the fall of the sugar empire and the rise of small businesses in Honokaa.

Honokaa-Hamakua Farmers and Cultural Market March Schedule

Market held every Saturday beginning at 9:00 AM in front of the historic Botelho Building in downtown Honokaa
Call Hal Hisa Yamato at 775-9239 for more information

April 2	Easter Theme (Guest choirs/musicians/singers)	April 23	Youth "Kau Kau" Favorites
April 9	Post-Buddhist "Hana Matsuri" (Festival of Flowers)		(Karaoke singing, Skits)
April 16	Tax Return "Pau" Party (Pupus, Demonstrations, Group Singing)	April 30	May Day, Promoting the evening "Concert at the People's Theatre"
		Coming in May: Main Street Outdoor Music Concert	

Waipi'o
On Horseback

Waipi'o
Van Tour

Mauna Kea
Summit Tour

HAWAII RESORT TRANSPORTATION COMPANY

Experience the Beauty and Splendor
of Waipio Valley by Horseback or Van



For Reservations or Information Call:

(808) 775-7291



HAWAIIAN MACADAMIA NUT PLANTATION



Factory Tours...and more!

Visit our Factory and Store in Honokaa for delicious macadamia nut creations - from freshly-roasted nuts surrounded by creamy chocolate, to macadamia nuts and coconut combined in a fantastic butter brittle, to the best macadamia nut cookies from "our" bakery...mmmm good.

LOCATED IN HONOKAA TOWN, THE HEART OF HAMAKUA

775-7201

April Bed & Breakfast Features

Island of Hawaii

THREE BEARS' BED & BREAKFAST Innkeepers: Anne and Art Stockel 72-1001 Puukala St., Kailua-Kona, HI 96740 Phone/Fax (808) 325-7563 or 1-800-765-0480 (mainland only). Rates: \$65-\$75 double Notes: Wir sprechen Deutsch.

Three Bears' Bed and Breakfast features comfortable, friendly accommodations and a spectacular ocean view of the Kona coastline and the island of Maui. Located on the hillside above the new Kona Coast Beach Park, this B&B is just a short drive from Kailua town and the many beaches on the Kona coast.

Surrounded by papayas, bananas, flowering hibiscus and bougainvillea, the guest wing has a separate entrance, and both rooms have private baths, color TV, coffee maker, microwave oven, and a small refrigerator.

A terrific breakfast is served each morning on the lanai, as guests watch the many colorful wild parakeets and canaries enjoying a free meal from the bird feeder. Guests are served lots of local island fruits, including home grown papayas. Croissants, muffins, cinnamon rolls, and home baked breads come fresh out of the oven. Assorted cold cuts, fruit juices, tea and 100% pure Kona Coffee from the Three Bears' own coffee farm are also sure to be enjoyed.



Ocean views from the Three Bears' B&B

Complimentary beach chairs, towels, mats, coolers, boogie boards and snorkel gear are available for those guests planning to visit the beautiful beaches along the Kona coast. A special macadamia nut cracker is provided so guests can eat all the home grown mac. nuts they can crack.

Your hosts, Anne and Art will also be happy to help you find places to stay on the other Hawaiian Islands and will gladly reserve rental cars for you on all islands at special rates. Call today to make your reservations.

HALE OHIA COTTAGES Innkeepers: Michael or Betty P.O. Box 758, Volcano Village, HI 96785 (808) 967-7986 1-800-455-3803 (U.S. & Canada) Rates: \$60 to \$95 Notes: Historical Estate, Private Baths

When I'm asked to describe Hale Ohia Cottages in a few paragraphs, I think of guide book descriptions I've read for Bed & Breakfasts and the adjectives used to entice guests.

When I see the word "luxury" used, I think of the Ritz, and we're not a theme park, I go to Disneyland for that. We don't promote T.V.'s, telephones or VCR's, although they are all available, most guests are trying to get away from that.

If you are looking for privacy, quiet elegance, sensible lodging, knowledgeable hosts for island information, and a sense of "Aloha", then Hale Ohia is for you.

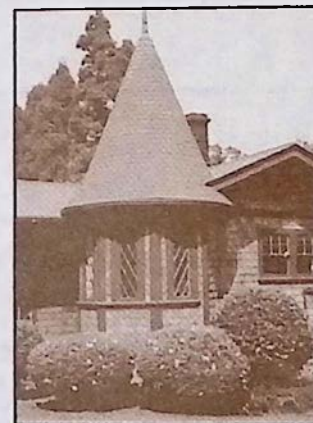
The ancient Hawaiian's called Hale Ohia Uluwena ("Hidden Place"). The gardens are unmatched, the architecture unique (1933) the atmosphere relaxed.

Our suites and cottages are immaculate and all have private entrances and baths. Some cottages have fireplaces (we do provide the wood) and complete kitchens for longer stays.

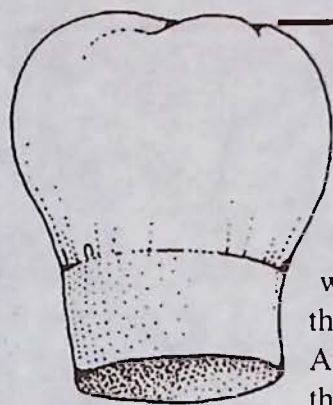
Volcano is at the 4,000' elevation so all our accommodations have heat for cool evenings, and the heated Japanese soaking tub (furo) under the pines feels great after a day of hiking.

I don't spend a lot on advertising. Many of our guests are return visitors. Hale Ohia is a favorite for writers, photographers, artist, film crews, local Hawaii residents, a Pulitzer prize winner, and families.

We're easy to find. Only one mile from the Park, toward Hilo. Watch for our sign. Come visit. Aloha, Michael.



Unique architecture of Hale Ohia Cottages



for at least two more minutes with no results. The whites just laid in the bowl sort of frothy but flat. Any suggestions as to what could have gone wrong.

Answer... A couple of items you may want to check next time. One: Always be sure of the freshness of your eggs. (You don't know how long they were in the store, or in transit before you made your purchase.) Two: Run a simple test at home by putting the egg into a glass of water. A fresh egg will sink rapidly to the bottom standing on it's broad end and a three week old egg will lay on it's side. (For your purpose you don't

COOK'S WISDOM

Question.. While making a topping the recipe called for whipping egg whites to medium peaks. I put the whites into a bowl and started to beat them with a hand held electric mixer. After a couple of minutes I noticed that they didn't whip up at all. I continued

want to use an egg older than two weeks.)

When you prepare to whip the whites, make sure all your utensils are thoroughly cleaned, washed and dried and free from any contact with oil or fats. Also be sure there is no egg yolk particles in your separated whites because they will inhibit the whipping process. Start off at a slower speed before gradually increasing the speed as the whites start to rise. When they are starting to form up add a pinch of cream or tartar. This helps them to hold their shape. Whip to the desired consistency but be careful not to over beat the whites because it makes them dry and hard to work with.

For help with your cooking questions please write to:

Ron Gallaher/Chef
La Bourgogne Restaurant
77-6400 Nalani St.
Kailua-Kona, HI 96740

HAWAIIAN HONEY HOUSE
Gourmet Honey
Bee Removal & Supplies
Honey Eaters 'R' Sweeter



Hamakua Trading Co.
Approved Septic Tanks 1,000
& 1,250 gallons. We Deliver.

Phone/Fax: (808) 964-5401, Outside Hawaii 1-800-238-8BED
R.R. 1 Box 206, Papaikou, HI 96781

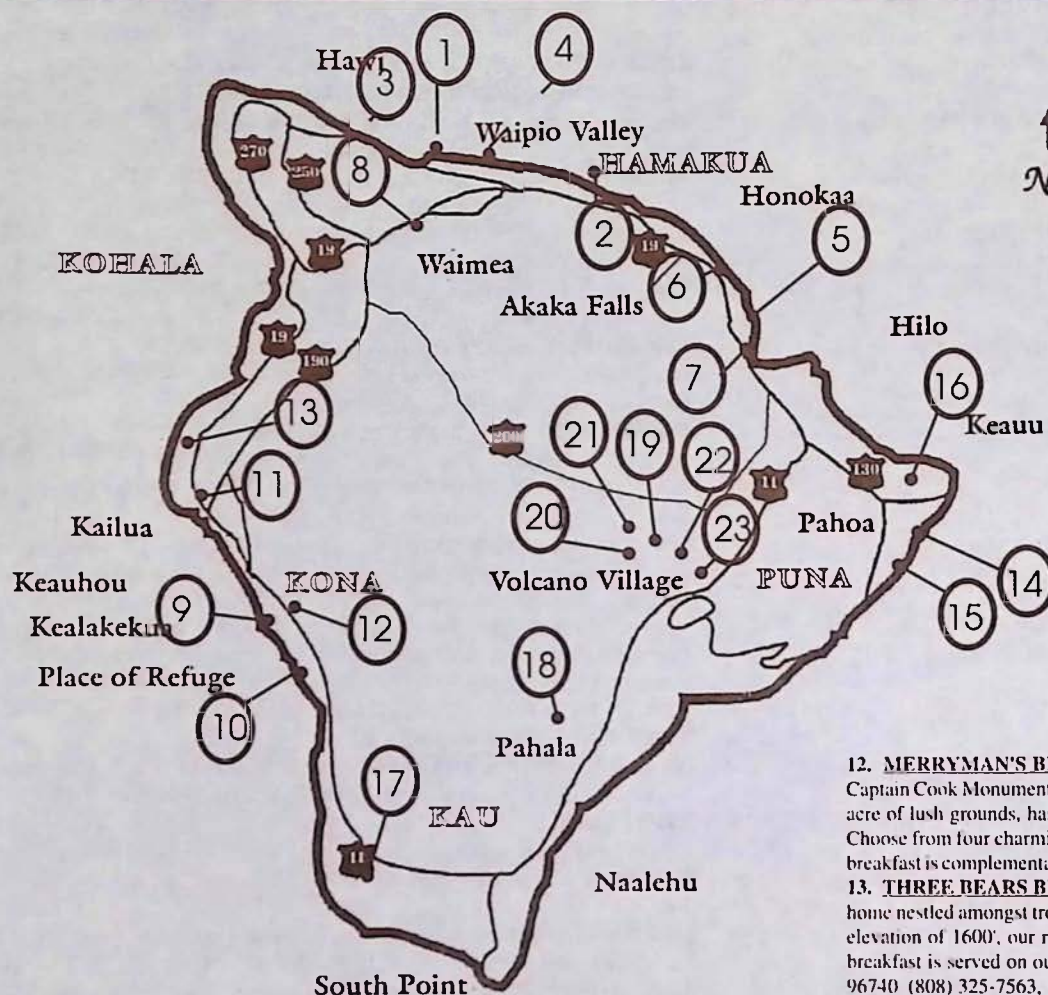
Hilo Farmer's Market

Every Wednesday and Saturday in Downtown Hilo at the corner of Kamehameha Avenue and Mamoo Street from 6 a.m. to 2 p.m.

And The New Kona Farmer's Market

Every Sunday at Lanihau Center in Kailua from 6 a.m. to 1 p.m.

Big Island Bed & Breakfasts



Denotes Hawaii Island Bed & Breakfast Association

HAMAKUA REGION

1. **HALE KUKUI:** Overlooking Waipio Valley, each unit has a full bath, living room, kitchen and large lanai. P.O. Box 5023, Kukuiahae, HI 96727 (808) 775-7130
2. **SUDS ACRES:** Wheelchair Access, Macnut farm, indoor pool, cozy cottage on slopes of Mauna Kea, kitchen. P.O. Box 277, Paauilo, HI 96776 (808) 776-1611; 1-800-735-3262
3. **WAIPI'O RIDGE VACATION RENTAL:** Secluded retreat- breathtaking view. Queen Bed - 1 bath - living, dining, kitchen & TV - Roger Lasko P.O. Box 5039, Kukuiahae, HI 96727 (808) 775-0603
4. **WAIPIO WAYSIDE:** Step back in time to a 1938 sugar plantation home. 5 unique bedrooms. P.O. Box 840, Honokaa, HI 96727 (808) 775-0275 1-800-833-8849

HILO REGION

5. **HALE KAI:** 4 star B & B overlooking beautiful Honolii surfing beach and Hilo Bay. All private baths, cable TV, ocean front views, pool & jacuzzi, full breakfast-quiet area. Guests treated as family. Chosen among top 100 B & B's in USA and Canada. Rates: \$80 to \$98. Call or write Evonne or Paul 111 Honolii Pali, Hilo, HI 96720. (808) 935-6330 Fax (808) 935-8439
6. **HALE LAMALANI:** (House of Heavenly Light) A vacation rental and hostel serenely situated 7.5 miles north of Hilo, 1,000 feet up on the Hamakua Coast w/mountain, ocean & bay views. Rates: \$15 to \$50. P.O. Box 430 Papaikou, HI 96781 (808) 964-5401 1-800-238-8BED (mainland).
7. **WILD GINGER INN:** Nonsmoking Inn with jungle garden & stream room includes Hawaiian breakfast overlooking scenic Hilo Bay. Walk to old Hilo town, shops and restaurants. 100 Puuoe St., Hilo, HI 96720. 1-800-882-1887 Mainland or (808) 935-5556 Hawaii

KAMUELA KOHALA REGION

8. **KAMUELA'S MAUNA KEA VIEW:** Popular private suite w/rate below Kamuela motel room. Fireplace, equipped kitchen, deck panoramic view, telephone, TV. P.O. Box 6375 Kamuela, HI 96743 (808) 885-8425.

KONA REGION

9. **B & B AT KEALAKEKUA BAY:** Private secluded peaceful estate, ocean/coastal views, private rooms/private baths. Also available, 2 bedroom 2 1/2 bath house. Walk to beach, snorkel, watch whales/dolphins. P.O. Box 1412, Kealahou, HI 96750 (808) 328-8150 1-800-328-8150.
10. **DA THIRD HOUSE:** Quiet, peaceful studio. Private entrance & lanai. Unobstructed ocean view. Minutes away from sandy beaches, best snorkeling. All amenities. P.O. Box 321, Honaunau, HI 96726. (808) 328-8410
11. **HALE MALUHIA:** Minutes from Kailua Village and Airport yet secluded in the beautiful coffee country of Hualaloa. Hawaiian style home with couple + breakfast lodging from \$50-\$75. 76-770 Hualalai Rd., Kailua-Kona, HI 96740 (808) 329-5773 (808) 329-1123 (808) 963-3300 Fax (808) 326-5487, 1-800-559-6627

PUNA REGION

12. **MERRYMAN'S BED & BREAKFAST:** Lovely tropical retreat just minutes away from the Captain Cook Monument at Kealahou Bay. This beautifully decorated cedar home is situated on an acre of lush grounds, has open beams, wood floors, antique furniture, and wonderful ocean views. Choose from four charming guest rooms with either an ocean or garden view. A delightful Hawaiian breakfast is complementary. P.O. Box 474, Kealahou, HI 96750 (808) 323-2276, 1-800-545-4390.
13. **THREE BEARS BED & BREAKFAST:** Enjoy spectacular ocean views from our new cedar home nestled amongst tropical fruit trees & flowers. Located above the Kona Coast Beach Park at an elevation of 1600', our rooms feature private baths, tv, micro, refrigerator, coffeemaker. A hearty breakfast is served on our spacious lanai. Write Anne Stockel, 72-1001 Puukala, Kailua-Kona, HI 96740 (808) 325-7563, 1-800-765-0480
14. **CARSON'S KOPOHO COTTAGE:** Great snorkeling and unique lava tidal pools, fully equipped 2 bedroom oceanside cottage. P.O. Box 503, Volcano, HI 96785 (808) 967-7683; 1-800-845-LAVA.
15. **KALANI HONUA:** Conference and Retreat Center offering meals, lodging, spa facilities, pool, workshops, classes, cultural programs in a beautiful seaside setting for your personal retreat. RR 2, Box 4500, Pahoa, HI 96778 (808) 965-7828. See calendar listings for current program information.
16. **PEARL'S SHELL B&B:** In Beautiful Leiani Estates! Spacious rooms, private baths, garden setting, minutes from Lava Tree Park, warm pools, snorkling, wonderful breakfast, 4 miles from Pahoa. P.O. Box 1324, Pahoa, HI 96778 (808) 965-7015

SOUTH POINT REGION

17. **BOUGAINVILLEA BED & BREAKFAST:** Private bath & entrances, pool, spa, hike, bike, secrets of Hawaii. P.O. Box 6045, Ocean View, HI 96704 (808) 929-9221; Fax (808) 929-7089
18. **WOOD VALLEY:** Glimpse old Hawaii, secluded plantation home, pasture and garden, home grown breakfast, 100% Kona Coffee, unique outdoor tub and steambath, lomi lomi massage available, near volcano, black & green sand beaches. P.O. Box 37, Pahala, HI 96777. (808) 928-8212 1-800-854-6754.

VOLCANO REGION

19. **HALE OHIA COTTAGES:** Private cottages on immaculate historic estate unmatched garden setting, fireplace, hot tub, private bath. Private suites start at \$60. P.O. Box 758 Volcano, HI 96785 (808) 967-7986 1-800-455-3803.
20. **CHALET KILAUEA - THE INN AT VOLCANO:** Elegant, country living, Theme rooms, Tree House, Jacuzzi, TV, Fireplace, Library, Afternoon Tea and a 2-course gourmet breakfast. Inncomparable! Rates: \$75-\$175. P.O. Box 998, Volcano Village, HI 96785 (808) 967-7786, 1-800-937-7786 Off Island
21. **CARSON'S VOLCANO COTTAGE:** Secluded, perfect romantic getaway. Beautiful grounds, hot tub private baths. P.O. Box 503, Volcano, HI 96785 (808) 967-7683, 1-800-845-LAVA.
22. **LOKAHI LODGE:** Newest and lowest-priced luxury Bed & Breakfast in Volcano. A blend of modern convenience with country charm. Each carefully appointed guest room exudes a warm feeling of aloha, delicately and beautifully furnished for your pleasure. With comfort as a priority, your room has two extra-long double beds, a private bath and a private entrance. P.O. Box 7, Volcano, HI 96785 (808) 985-8647, 1-800-457-6924.
23. **MY ISLAND BED & BREAKFAST:** An 1886 historic missionary home at Kilauea Volcano surrounded by a 5 acre botanical estate. Rooms in the main 3-story house & garden apartments, caters to couples, singles & families. Full breakfast. Prices from \$35 to \$75. Special touring booklets. All the macnuts you can eat. Write: Gordon & Joann Morse, P.O. Box 100, Volcano, HI 96785 (808) 967-7216, (808) 967-7110

April On The Big Island

Sundays Every Month - JAZZ - LIVE IN HILO

The Skyliners play music from the Big Band era at D'Angoras in the Hilo Lagoon every Sunday afternoon from 3:30 to 6:30 p.m. 776-1611 for information.

- 1-30 **JOAN MCGEE ART SHOW AT FIREHOUSE GALLERY**
in Waimea all month. Show will include over 30 paintings, mostly watercolors. The Gallery is located at the main stop light in Waimea and is open from 10:00 AM to 2:00 PM, Tuesdays, Thursdays, and Saturdays. Reception will be held on April 9th from 3:00 PM to 5:00 PM and is open to the public. Call 885-7671 for more info.

- 1-30 **FACES OF HAWAII**
Portrait artist Chris Campbell shows us his interpretation of faces of Hawaii. Wailoa Center, Hilo. 933-4360 for info.

- 1,2,8,9 **JESUS CHRIST SUPERSTAR -A ROCK OPERA-**
10,14, Live at the Aloha Theater in Kainaliu. See pages 18 & 19 for details or call 322-9924.

- 1 **MARIA MULDAUR ACCOMPANIED BY PIANIST EXTRAORDINAIRE DAVID MATHEWS**
with Walter Ward opening up. Live at the Akebono Theater, Pahoa, 8:00 PM, \$15 adv. \$18 door, 965-9943.

- 1-4 **SACRED HAWAIIAN HEALING ARTS**
Presented by Leon Kalili at Kalani Honua in Kalapana. Call 965-7828 for more information

- 3-9 **MERRIE MONARCH FESTIVAL**
see story this month.

- 4-11 **MARIE McDONALD'S ART OF HULA AT COOK'S DISCOVERIES**
Hawaiian floral authority Marie McDonald, author of "Ka Lei" and a Smithsonian "living treasure," turns her talents to print-making depicting the gathering of native plant materials for the hula. For more information on this event turn to page 8 of Coffee Times. Cook's Discoveries is located in Waimea. Call 885-3633 for more info.

- 4-29 **MERRIE MONARCH QUILT SHOW**
A display in celebration of the memory of King David Kalakaua who revived the Hawaiian culture. Wailoa Center, Hilo 933-4360 for more info.

- 5 **"WHERE HAVE ALL THE I'WI GONE?"**
Hawaii's native forest birds are extremely vulnerable to introduced diseases such as avian malaria and pox. One bite from an infected mosquito is the kiss of death to an i'wi. Microbiologist Carter Atkinson of the National Wildlife Health Research Center will highlight current research and discuss what residents can do about the epidemic of disease in Hawaiian forest birds. Kilauea Visitor Center Auditorium, Volcanoes National Park, 7:00 PM, 967-7184 for information.

- 6 **HAWAII ISLAND TRANSCENDENTAL MEDITATION PROGRAM**
The timeless Transcendental Meditation technique and the ancient art of Ayur-Ved medicine will be featured topics in Kailua-Kona. Visitors and island residents are invited to attend this free public presentation, which commences at 7:00 p.m. in the Management Office Conference Room at Lanihau Center. Call 323-3096 for info.

- 6 **WEDNESDAY EVENING CULTURAL PROGRAM**
at Pu'u honua o Honaunau National Historical Park in Honaunau. 7:30 p.m., call 328-2288 or 328-2326 for event listing.

- 8 **ELVIN BISHOP/NORTON BUFFALO BLUES BAND LIVE**
8:00 PM, Akebono Theater, Pahoa, 965-9943.

- 9 **2ND ANNUAL KONAWAENA BLOCK PARTY & HO'OLAULEA**
Eight hours of live music, student exhibits and talent shows, food, lots of game, craft, coffee shop and merchandise booths. Visitors welcome!!! 1 PM - 9PM in the Konawaena Gym off Mamalahoa Hwy. 11 in Kealahakua. Call 328-2386 for info.

- 9 **RAS BINGHI I ROOTS/REGGAE BAND WITH SPECIAL GUEST**
8:00 PM, Akebono Theater, Pahoa, 965-9943.

- 9-30 **GUYS IN ACTION**
Stephen Osborne, dancer and choreographer, teaches men, ages 7-70, athletic movement in dance. For info, on four session course call V.A.C. at 967-8222.

- 15 **NORTH AMERICAN BUSH BAND**
As part of the Hawaiian Hemp Company's Holy Smoke Cafe Series this band arrives from Philadelphia via Honolulu to

perform Afro. Jazz, Rock Funk - Blues at the Akebono Theater, Pahoa, 965-9943

- 15 **JOHN O'CONOR (Pianist) Live at Kahilu Theater** (see pg. 11)

- 16 **PEACE CELEBRATION AT KALANI HONUA**
Event will coincide with Dalai Lama's visit to the Big Island, poetry, songs, stories. Call Kalani Honua at 965-7828. for info.

- 16 **SHIRLEY HASENYAGER/LUCILLE COOPER RECEPTION**
at Volcano Art Center Gallery. Dual exhibit by mixed media, two dimensional artist Hasenyager and clay and fiber artist Cooper. Works draw inspiration from sites and images in and around the volcano. Exhibit runs April 2 through 30. Reception is free. Call 967-8222 for info.

- 17 **LIM FAMILY PERFORMANCE AT THE ALOHA**
Hawaiian music & own family halau, 4:00 PM, Aloha Theater, Kainaliu, 322-9924.

- 17 **DALAI LAMA AT WOOD VALLEY TEMPLE**
2:00 PM at Wood Valley Temple in Ka'u. Call 928-8539 for info.

- 19 **"IS THE ECOTOURIST JUST ANOTHER TOURIST?"**
Sonia Juvik, associate professor of geography at UH-Hilo, presents a slide program on the potential impact of promoting and developing ecotourism in Hawai'i and other island environments. Can appreciation of the natural environment and conservation values by visitors to Hawai'i result in a different type of tourism? Kilauea Visitor Center Auditorium, Volcanoes National Park, 7:00 PM, 967-7184 for information.

- 22 **GLENN MILLER ORCHESTRA Live at Kahilu** (see pg. 11)

- 22 **TAKE BACK THE NIGHT**
Annual celebration of women's empowerment, Hale Halawai Park on Alii Drive in Kailua, 7:00 PM, call YWCA at 935-7141

- 22,23 **THE HOBBIT**
29,30 Performed by the Pahoa Highschool Drama Club at Akebono Theater, Pahoa, 7:30 PM, 965-9943.

- 22-24 **I DO! I DO!**
29,30 Is a two-character musical which takes place in one couple's bedroom over the course of their 50 years of marriage. Friday & Saturdays at 7:30 p.m. and Sunday at 3:00 p.m. Kilauea Theater, Volcanoes National Park. Call V.A.C. for ticket info. at 967-8222.

- 23 **LEI MAKING X 3**
Intensive lei making workshop by Joyce Jacobson, Jessica Harris and Lori Anderson. Volcanoes National Park Call V.A.C. at 967-8222 for info.

- 26 **"FOUNTAINS OF FIRE! THE KILAUEA IKI/KAPOHO ERUPTION"**
In late 1959, Kilauea Iki became the site of spectacular lava fountains which created a 400-foot deep lava lake and a huge mound of cinders. In early 1960, the eruption continued 30 miles downrift, inundating the town of Kapoho. Fred Rackle, retired professional photographer, will present rare behind-the-scenes footage of this awesome eruption. Kilauea Visitor Center Auditorium, Volcanoes National Park, 7:00 PM, 967-7184 for information.

- 29 **PUA PLANTASIA GRAND PUA PARTY**
Entertainment, roving musicians, dancing, live bands, chef demonstrations, food booths, wine tasting, auctions, gifts & collectibles, plant show and sale. Kona Outdoor Circle presents at Old Airport Pavilion in Kailua-Kona from 6-10 PM. 329-7286

- 15 **IMAGO THEATRE MASK ENSEMBLE Live at Kahilu** (see pg. 11)

- 29 **TAKE BACK THE NIGHT**
Annual celebration of women's empowerment, Hawaii Island YWCA in Hilo, 7:00 PM, call YWCA at 935-7141

- 30 **PUA PLANTASIA PLANT SHOW AND SALE**
Plant show and sale of hundreds of varieties, educational activities, demonstrations, samplings and sales of local agricultural products, Farmers' market, arts & crafts. Sponsored by Kona Outdoor Circle at Old Airport Pavilion in Kailua-Kona. 8 AM - 3 PM. 329-7286 for info.

- May 1 **PUA PLANTASIA LEI DAY CELEBRATION**
Continuation of activities, breakfast with celebrity chef Sam Choy, Lei Day school program, Lei-making demonstrations and contests. Sponsored by Kona Outdoor Circle at Old Airport Pavilion in Kailua-Kona. 8 AM - 3 PM. 329-7286 for info.

Coffee Times

HAWAII

READ IT, DRINK IT, LIVE IT!

see page
10

for a welcome break in your day

expires
4/30/94

1.00 Off

one pound of
our Estate grown
pure Kona Coffees
or other 28 varieties

WAIMEA COFFEE

COMPANY

885-4472

1-800-854-5662

located across from
Edelweiss in Waimea

or
FREE

cup of our coffee
of the day
with coupon

\$20 OFF ADULT COUPLE FARE

or \$5 OFF UNDER WATER VIDEO

expires
4/30/94

with this coupon

see page
31

BODY GLOVE 326-7122



See Page
19

expires
4/30/94

2 for 1

Papaya Boat Special

filled with tuna salad & herb dressing
buy one get one free with this coupon

328-9930

expires
4/30/94

329-2080

**ONE HOUR
MOTOPHOTO**

see page
3

FREE SET OF PRINTS

Receive a second set of prints for FREE with every
roll of film processed with this coupon

Kapaau Town
by the King's statue

889-5822

DON'S Family DELI

10% OFF ALL LUNCH ORDERS

see page
7

over \$10 with this coupon

expires
4/30/94

BLUE HAWAIIAN
HELICOPTERS



expires
4/30/94

FREE COLOR POSTER

with helicopter tour and this coupon

see page
24



Hale
O' Kaurwehi

10% Off

Come Visit The
Shopping Gallery
and Receive 10%

Off All Merchandise
With this Coupon

see page
26

expires
4/30/94

Kona Historical Society Museum

The Kona Historical Society, a non-profit organization, was founded in 1976 to collect, preserve and disseminate information about the history of the Kona districts on the island of Hawaii. It maintains a growing reference library and archive containing photographs, manuscripts, maps and oral histories as well as a small collection of artifacts.



Historical Photo Exhibits on display every month

Museum Hours

9:00 a.m. - 3:00 p.m. Weekdays
Closed All Holidays

ADMISSION IS \$1.00 (members & children under 12 free)

Located on Highway 11, one-half mile south of rural Kealahou.

P.O. Box 398 Captain Cook, HI 96704
TELEPHONE (808) 323-3222



PILOT A CESSNA AIRCRAFT AROUND THE BIG ISLAND

Under the supervision of a certified flight instructor
See Hawaii's:
VOLCANOES~WATERFALLS~VALLEYS

FREE T-SHIRT WITH ISLAND AIR TOUR
see our coupon

Cool, comfortable, spacious and smooth
The best visibility and stability plus a full intercom system on board for a truly custom trip.
Aircraft Tours, Rentals, Charters and Aerial Photography also available

326-2288



**Call
329-4727**

**74-5590 Eho St.
Kailua-Kona,
96740**

**OR YOUR
FAVORITE PHOTO**

Your Coffee Plantation Portrait Baked Into a Personal Coffee Mug, Button, or Simple Print.
A Great Gift for Someone Else!

Located at Kona Inn Shopping Village



DISHWASHERABLE MICROWAVEABLE

BODY GLOVE

KONA'S PREMIUM SNORKEL CRUISE SNORKEL • SCUBA • SNUBA



- Snorkel Gear & Instruction
- Continental Breakfast
- Deli Buffet Lunch
- Flotation Water Toys
- Full Service Bar (no host)
- Water Slide

326-7122

**\$20 OFF
Adult Fare**

\$20.00 Off per adult couple or \$10.00 off any single adult. Only \$44.00 per person with this coupon.

**\$5 OFF
Under Water
Video**

Capture your vacation with a custom Body Glove Video. This coupon entitles you to \$5.00 Off a Kona Down Under Production.

See our coupon

KONA BIKE TOURS

GUIDED BIKE TOURS OF HISTORIC KEALAKEKUA BAY

Stops at:
Painted Church,
Kona Coffee Mill,
Kealakekua Bay,
Place of Refuge
Plus:
Snorkeling
and Picnic Lunch



MOUNTAIN BIKE RENTALS

**FREE
WATER
BOTTLE**
 see our coupon

We carry the full line of

IRONMAN
merchandise

Plus all of your running,
swimming & biking needs

Located in the Kona Inn Shopping Village

329-2294

Waipio Wayside

Bed & Breakfast Inn

(10 minutes from Waipio Valley)



1938 sugar plantation managers home that provides a peaceful and relaxing retreat to those who wish to unwind in a warm and comfortable atmosphere. Choose from five unique bedrooms ranging from \$50 to \$100. Enjoy a hearty breakfast in a traditional Bed and Breakfast.

Call today to start experiencing the comfort and quality of old Hawaii. See our listing in B&B section.

775-0275 or 1-800-833-8849

Restaurant La Bourgogne

and

ALAN SUZUKI OF ROBERT MONDAVI
 CORDIALLY INVITE YOU TO ATTEND OUR
 MONDAVI WINE DINNER

MONDAVI MENU

Walnut, Gorgonzola & Apple Salad
 Dijon Vinagrette Dressing
 Robert Mondavi Chardonnay, 1992
 Braised Veal Shank With Roasted Garlic
 "A La Bourguignonne"

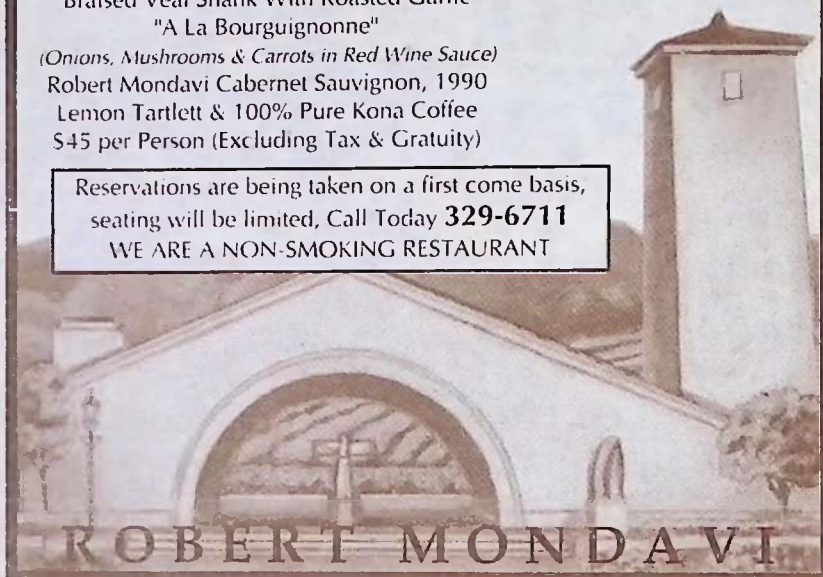
Wednesday,

April 20th, 1994

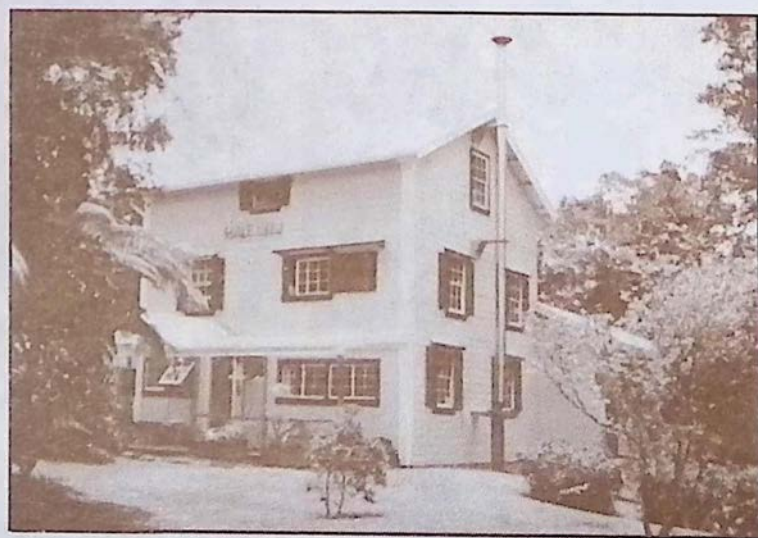
First Seating: 5:30 PM
 Second Seating: 8:00 PM

(Onions, Mushrooms & Carrots in Red Wine Sauce)
 Robert Mondavi Cabernet Sauvignon, 1990
 Lemon Tartlett & 100% Pure Kona Coffee
 \$45 per Person (Excluding Tax & Gratuity)

Reservations are being taken on a first come basis,
 seating will be limited, Call Today **329-6711**
 WE ARE A NON-SMOKING RESTAURANT



MY ISLAND BED & BREAKFAST AT VOLCANO



Featuring...

- ~All the macadamia nuts you can eat~
- ~A variety of rooms at a range of prices~
- ~We serve a "stuff-yourself" breakfast~
- ~Located on a 5-acre estate full of flower gardens~
- ~Personalized touring information for East Hawaii~
- ~Come spend time in our 108-year old historic house~

967-7216 OR 967-7110

(See our listing in B&B section)