

— The Alternative Visitor's Guide — FREE —



# Coffee Times

March 1994 / Big Island of Hawaii / Edition 12

## INSIDE:

*Mark Twain's  
Night in Volcano*

Monthly Events  
Calendar,  
Hawaii Island B&B's  
Manoa Valley,  
The Mother Plantation  
To All Hawaiian Coffees





# HAWAII ISLAND INDEX OF EVERYTHING

## ART GALLERIES

Ackerman Galleries	889-5971	P. 7
Blue Ginger Gallery	322-3898	P. 19
Cook's Discoveries	885-3633	P. 9
Hale O' Kauwehi	775-0255	P. 26
Upcountry Connection	885-0623	P. 10
Volcano Art Center	967-8222	P. 12
Wo On Gallery	889-5002	P. 6
Woodcarver's Corner	985-8518	P. 13

## COFFEE FARMS

Old Hawaiian Coffee	328-2277	P. 3
---------------------	----------	------

## COFFEE RETAILERS AND CAFES

Bad Ass Coffee Co.	1-800-338-7139	322-2646	P. 14
Holuakoa Cafe		322-CAFE	P. 21
Waimea Coffee & Co.		885-4472	P. 10

## DINING

Aloha Cafe (International, Mexican...)	322-3383	P. 18
Bamboo (Pacific Rim, Thai)	889-5555	P. 6
Cafe Pesto (Pacific Rim Italian)	Kaiwihae 882-1071	Hilo 969-6640
Don's Deli (International)	889-5822	P. 7, 25
Jolene's Kau Kau Korner (Cafe)	775-9498	P. 7
La Bourgogne (French)	329-6711	P. 26
Luquin's Mexican Restaurant (Mexican)	965-9990	P. 32
Mamane St. Bakery	775-9478	P. 15
Mateo's Pizza	775-0944	P. 26
Nuang Mai (Thai Kitchen)	965-8186	P. 15
Roussels (French Creole)	935-5111	P. 25
Sibu Cafe (Indonesian & Southeast Asian)	329-1112	P. 11
The Godmother (Italian)	965-0055	P. 15
Wakefield Gardens (Home Cooked)	328-9930	P. 19

## LODGING

LODGING			
Bamboo House		965-9340	P. 15
Carson's Volcano Cottages		967-7683	P. 12
Chalet Kilauea		967-7786	P. 13
Hali House Inn		969-7378	P. 25
Hale Kai B&B		935-6330	P. 25
Hale Maluhia B&B	1-800-559-6627	329-1123	P. 21
Hale Ohia Cottages		967-7986	P. 12
My Island B&B		967-7216	P. 32
The Village Inn		965-6444	P. 15
Waipio Wayside	1-800-833-8849	775-0275	P. 32
Wild Ginger Inn		935-5556	P. 25

## MUSEUMS

Kona Historical Society	323-3222	P. 31
-------------------------	----------	-------

## AIR, LAND AND OCEAN ADVENTURES

Blue Hawaiian Helicopters (Helicopter Tours)	961-5600	P. 24
Body Glove Snorkeling Cruise (Snorkeling Cruise)	326-7122	P. 31
Chris' Bike Adventures (Bike Tours)	326-4600	P. 6
Dan McSweeney Whale Watch	322-0028	P. 20
Hawaii Resorts Transportation (Horse, Van Tours)	775-7291	P. 27
Koa Air Service (Helicopter, Plane Tours, Instruction)	326-2288	P. 31
Kona Bike Tours (Mountain Biking, Bike Equipment)	329-2294	P. 32
Nautilus Submarine Experience (Underwater Reef Tours)	326-2003	P. 3

## SPECIALTY SHOPS

Antiques	Na Pa' Aloha	775-9173	P. 26
Clothing	As Hawi Turns	889-5023	P. 7
	Hawaiian Hemp Co.	965-8600	P. 15
	Princess Kaiulani	885-2177	P. 11
	Rainbow Nation	775-7742	P. 26
Dance Studios	Dameron's Academy of Dance	322-8119	P. 18
General Stores	Aloha Village Store	322-9941	P. 18
	Kohala Health Food	889-0277	P. 6
	Naalehu Fruit Stand	929-9009	P. 4
	Pahoa Natural Groceries	965-8322	P. 14
	Waimea General Store	885-4479	P. 10
Hardware	Pahoa Hardware	965-6459	P. 14
Ice Cream	Simply Natural	775-0119	P. 26
	Tropical Dreams	889-0505	P. 7
Gardens	Akatsuka Orchid Garden	967-8234	P. 12
	Hawaiian Rainforest Garden & Gift	965-9576	P. 15
Mac. Nut Factory	Hawaii Mac. Nut Plantation	775-7201	P. 27
Photo Developing	Kailua Camera Store	329-4727	P. 31
	One Hour Moto Photo	329-2080	P. 3
Publications	Ka'u Landing	929-8130	P. 19
Real Estate	A Real Estate Concern	322-6119	P. 19
	Kohala Pacific Realty	889-5181	P. 7
Spa Service	Querencia Spa	328-2569	P. 23

## THEATRES

Akebono Theatre	(see calendar)	965-9943	P. 14
Aloha Performing Arts Center	(see calendar)	322-9924	P. 18
Kahilu Theatre	(see calendar)	885-6017	P. 8
Kilauea Theatre	(see calendar)	967-8222	P. 30
Kona Market Place Cinemas		329-4488	P. 3
People's Theater		775-0000	P. 26

# COFFEE TIMES

For calendar inserts, historical comments  
or

TO RESERVE ADVERTISING SPACE

Call or write the publisher.

INTEREST at:

(808) 326-7637

P.O. BOX 1092

Captain Cook, Hawaii 96704

**For Mainland Subscriptions:**

Send \$25.00 for 12 months  
Add \$5.00 if outside of USA

Mail to:

Up Country Productions

P.O. Box 1092

Captain Cook, HI 96704

# Read This ↓

UP COUNTRY is not the manufacturer, or an agent of the manufacturer, for the goods and services being advertised herein and therefore makes NO EXPRESS OR IMPLIED WARRANTY OF ANY KIND WITH RESPECT TO THOSE GOODS AND SERVICES. The publisher will not be responsible for typographical or printing errors, but will reprint without charge that portion of the ad in which the error occurs. Publisher accepts no responsibility for errors resulting from telephone insertions.

Illustrations used herein are for design purposes only and do not necessarily depict the actual items offered by the advertisers.

This publication may not be reproduced in whole or in part without the prior written consent of UP COUNTRY and reserves the right to edit, revise or refuse any advertisement.



# Coffee Times

## HAWAII

**READ IT, DRINK IT, LIVE IT!**

see page  
10

for a welcome break in your day

expires  
3/31/94

**1.00 Off**

one pound of  
our Estate grown  
pure Kona Coffees  
or other 28 varieties



885-4472  
1-800-854-5662  
located across from  
Edelweiss in Waimea

or

**FREE**

cup of our coffee  
of the day  
with coupon

**\$20 OFF ADULT COUPLE FARE**

or \$5 OFF UNDER WATER VIDEO

expires  
3/31/94

with this coupon



**BODY GLOVE** 326-7122



see page  
31



See Page  
19

**2 for 1**

expires  
3/31/94

**WAKEFIELD  
GARDENS  
& RESTAURANT**

**Papaya Boat Special**

328-9930

filled with TUNA salad & herb dressing  
buy ONE GET ONE FREE with this coupon

expires  
3/31/94

329-2080

**ONE HOUR  
MOTOPHOTO**

see page  
3

**FREE SET OF PRINTS**

Receive a second set of prints for FREE with every  
roll of film processed with this coupon

Kapaau Town  
by the King's statue

889-5822

**DON'S Family DELI**

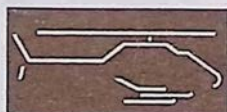
**10% OFF ALL LUNCH ORDERS**

see page  
7

over \$10 with this coupon

expires  
3/31/94

**BLUE HAWAIIAN  
HELICOPTERS**



expires  
3/31/94

**FREE COLOR POSTER**

with helicopter tour and this coupon

see page  
24



Hale  
O' Kauwehi

**10% Off**

see page  
26

Come Visit The  
Shopping Gallery  
and Receive 10%

Off All Merchandise  
With this Coupon

expires  
3/31/94



# Old Hawaiian Coffee

## 1870's Trees

Specializing only in 100% pure estate grown Kona Coffee

HIGH QUALITY MODERN COFFEE PULPING MILL  
COME TOUR OUR HISTORIC  
COFFEE FARM

Take a FREE tour of our farm for the real story of how coffee is produced. We are located off Highway 11 in Honaunau, one tenth of a mile south of mile marker 105, just after the mailbox on the mauka side of the road.

"We'll take you from the tree to the roast."

Misha Sperka (farmer/owner)

84-5042 A Mamalahoa Hwy., Captain Cook, HI 96704

(808) 328-2277



KONA MARKETPLACE  
CINEMAS

Grand Reopening 2 SCREENS

Newly Remodeled ~ New Air Conditioning  
at the Kona Marketplace in Kailua-Kona

For Showtime Information Call  
329-4488



NAUTILUS II  
SEMI SUBMERSIBLE

HAWAII'S SUBMARINE EXPERIENCE



\$5 off

EACH PASSENGER  
see our coupon

INTRODUCTORY PRICES

ADULTS \$34.95

CHILDREN \$19.95

Enjoy Both Topside and Underwater Viewing in our Air-Conditioned, 58-Foot, 34-Passenger Coast Guard Approved Vessel. No Age Limit, Day and Night Cruises, Special Group Charters Available,

For reservations call or stop in at our shop. We are located across from the pier in Kailua-Kona

326-2003

ONE HOUR  
MOTOPHOTO™

FREE SET OF PRINTS

with every roll of film developed

SEE OUR COUPON

329-2080 Kona Inn 322-8091 Keauhou

Located at: Kona Inn Shopping Village (1 hour) on Alii Drive  
& at the Keauhou Shopping Village (overnight service)



# Aloha Malama

## (Beloved Guardian)

by Jean Kilinoe Cluff

It was a different colored "No Trespassing" sign from others we had crossed in the past. The path led us up a Hawaiian valley plentiful in guava, mountain apple and avocado. Ancient rock walls remained mostly intact and parts of one-time villages were visible and marked by parallel rows of Royal Palms. We felt in our minds we had been here before, but this walk was not typical.

Nor were we the usual group making the climb. Most often it was just Claire and me out exploring as many parts of the island as we could. On this occasion, we started late and everybody wanted to come along. So our group included her husband, their dog and their two small children, two and a half and five.

We criss-crossed the river throughout the climb, each crossing a unique experience. The water rushed swiftly at our feet, requiring all attention.

I lugged the camera and took shots of the light through the forest. At one point we stopped at a pool, took our clothes off and plunged in. Claire climbed like a spider up a rock wall that edged the water and fearlessly leaped. It was a brisk chill, but the warmth of the sun in the woods balanced the jolt of the mountain stream.

The sound of the waterfall, faint in the beginning, became a captivating roar and called us onward. Journeys on Hawaii's "roads less traveled" require a prayer of respect, for the Hawaiians truly worship the "Aina" (the land). We were overwhelmed by the beauty around us. The roar sounded closer, and we thought surely we must be near the falls.

Occasionally pangs of responsibility broke through my bliss. I worked the night shift at the hospital and was due in at 11 PM. We hadn't reached the falls and the sun was getting low. The tumult of our group was distracting, carrying children slowed the pace. My moments of reality-check were short lived and the splendor would win my attention.

We reached a tranquil, sunlit meadow, golden and mellow. Suddenly, out of nowhere, a truck drove speedily up to us. Leaping from the truck was a stone-faced, serious man who delivered his wallet at half mast to reveal a silver star. We adults stared at each other and recognized a simultaneous desire to flee this menace, take off in different directions into the woods. But what remained, was reality in the form of one loping dog, two meandering children, and three looks of pure bewilderment.

"You're under arrest for trespassing. Get in the truck." His weather-carved face was rigid with determination.

"We only wanted to see the waterfalls," I pleaded.

You're on private property. You'll see the inside of a jail instead," he replied unwaveringly but in soft Pidgin.

The family piled into the bed of the truck, I got in the cab with the man with the badge. I flashed on a story about the man whose property we had trespassed. At a party a friend had approached him suggesting he bring his horses over and they go for a ride on this man's land. "Hell no! Wha' chu t'ink I do, run a dude ranch?"

"Sounds like the falls are near." I offered, hoping maybe he could just take us up there before taking us to jail. "You're not even half the way there," he told me. "It's four miles still yet."

The truck started. This was really happening. This was serious. None of us had grasped that at first.

The path out of the valley made for a spectacular drive, sections went straight down, the fourth tire failed to touch at certain points. I thought to take more photos but didn't have the courage to ask this unsmiling man. He would probably just say no. He was a great four-wheeler, and I told him so.

"They say this is a most beautiful waterfall." I was still trying to break the ice. I must have got through because I heard him sigh, "Aahhh, she's the prettiest I've ever seen, with a long graceful slope."

"I suppose it's a good thing you came along. If we were such a distance from the falls, I would have been late for work." (An understatement. If we had made it to the falls, I wouldn't have gotten back until the next day.)

"This jail, where we're going, will I be out in time for work?" He inquired where I worked and when I needed to be there. When I told him, he asked, what do you do there. I'm a nurse. In the cab, a long silence followed. I looked out the back window at my companions in the truck bed. "Shee-e-it!" he broke the silence, "I no can bus' one nurse."

He drove us to may parked car and looked me straight in the eye. "You nevah' cross this gate again." I promised and to this day, I never have.

There are special places throughout these islands, most of them accessible to anyone caring enough to learn the proper way to explore. There are published guides to trails and occasionally, one gets invitations to share some of the legends of the land (Mo'olelo). We must remember these opportunities are precious gifts.

Many years had passed and chance re-introduced this man to me. I got to thinking about the way in which he had just appeared, and I recalled our uninhibited swim. So I asked him, "It seemed like you just materialized. Were you waiting for us back on that mountain?" An uncensored smile cracked through his serious mask, and he showed me a small piece of carved guava wood with a clean design.

"I carved this while I was waiting for you."



# Naalehu

## Fruit Stand

"A stop in good taste"

This general store-restaurant takes pride in homemade goodness. Choose from numerous tropical breads like pineapple-coconut, to saucer-sized cookies like mac nut butter. The macadamia nut pie is a prize winner. Sandwiches come on homemade bread and the pizza boasts all made-from scratch ingredients. Wet your whistle with the fresh-pressed pineapple juice. Sundry and souvenir items available. Located on Hwy. 11 in Naalehu. Free souvenir with purchase!

Open daily  
at 9 am  
on Hwy 11  
It's the perfect rest  
stop on the way to  
Volcano!

P.O. Box 31 Naalehu, HI  
96772 (808) 929-9009



# Friendly North Kohala

Biking Adventures, Art Galleries, Fine Dining, Cafes, Quaint Shops, and even a local Ice Cream Factory

Following highway 270 north visitors will encounter a landscape filled with historical landmarks that include the original statue of King Kamehameha, Kalahikiola Church, and Mo'okini Heiau which is regarded as the oldest pre-Western contact temple of worship. In the year 1758 King Kamehameha was believed to be born at Mo'okini.

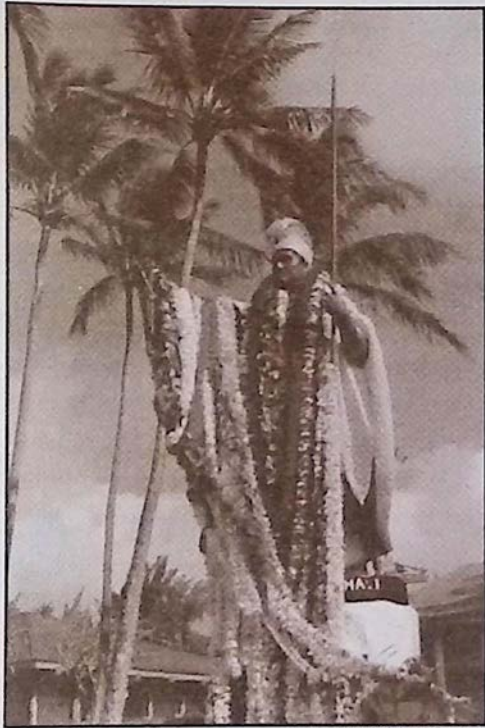


photo by Michael Stewart

Also to be found in the North Kohala region are the remnants of a once thriving sugar plantation industry of the 1880's which is still visible in the many old storefronts of Hawi & Kapaau towns. These towns are now preserved by a new generation of Hawaii business which have their own distinct local offerings. In Hawi Town, a fun romantic & wild boutique called **As Hawi Turns** awaits those visitors seeking new clothing for the Hawaiian life-style and is not for the weak at the knees. The shop also carries handmade crafts by Big Island artists. Across the street is **Kohala Health Food** which carries a hearty selection of herbals, local fruits and various gift items. Massage therapy is also available.

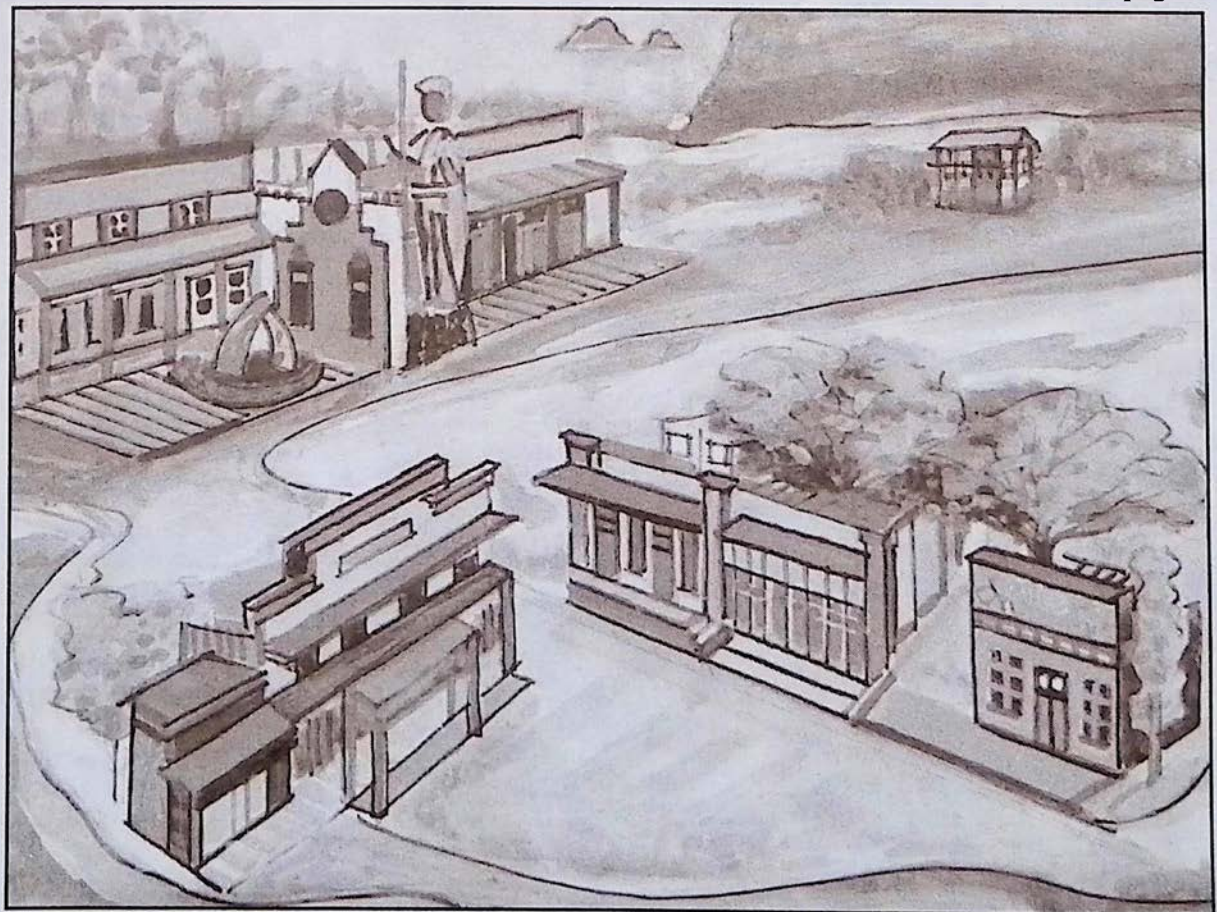
Next to As Hawi Turns is **Kohala Pacific Realty**, where visitors are welcome to stop in for free maps of the North Kohala region. On the other side of the street is the newly opened **Bamboo Restaurant**. Inside what was once the grand old Takata Store, built during the booming days of sugar cane, chef Michael Neff combines Pacific Rim dishes with flavors from as far off as Thailand to create his innovative style of cuisine. Farm fresh herbs and a next door bakery contributes a local flare to the food.

Just up the road a piece, smack dab in the middle of Kapaau Town is Hawaii's own local ice cream factory, **Tropical Dreams**. The owners, Lou and Deby Bleier, fea-

ture their fresh fruit sorbets and homemade ice creams and their original macadamia nut and honey butters in a parlor that fills one storefront in old Kapaau town. **FREE TASTES!!!** Across the street from the ice cream factory and also across from the King Kamehameha statue artist Gary Ackerman reflects on the landscape around him through his impressionistic style of painted art on display in **Ackerman Galleries**. Gary's combination of a free liquid style on canvas and varied techniques of painting allows him to successfully blend the colors of the natural environment. Both galleries also feature the works of other local artists.

If the drive up the Kohala coast and gallery hopping has got your appetite going at this point, maybe it's time to visit **Don's Deli** across from the King Kamehameha statue. Let Don prepare a sandwich from his large selection of cold cuts and cheeses or try one of his homemade vegetarian quiches or pastas. Don's new terrace is a great place to relax before heading north to Pololu Valley.

**Upper Left:** The King Kamehameha statue draped with leis in downtown Kapaau. **Below:** Impressionistic painting by Big Island artist Gary Ackerman of the North Kohala towns of Hawi and Kapaau.



continued on page 6



continued from page 5

# CHRIS' BIKE ADVENTURES



MAUI · HAWAII · MOLOKAI

## Your Choice of 3 Biking Adventures: The Kohala Mountain Adventure

This predominantly downhill bike trip, suited to all levels of riders boasts panoramic views of Mauna Kea, Mauna Loa and Maui's Haleakala while you pass through lush pasture lands and quaint North Kohala villages. The trip finishes at a remote beach for lunch after stopping for a view of majestic Pololu Valley.

## The Mauna Loa Challenge

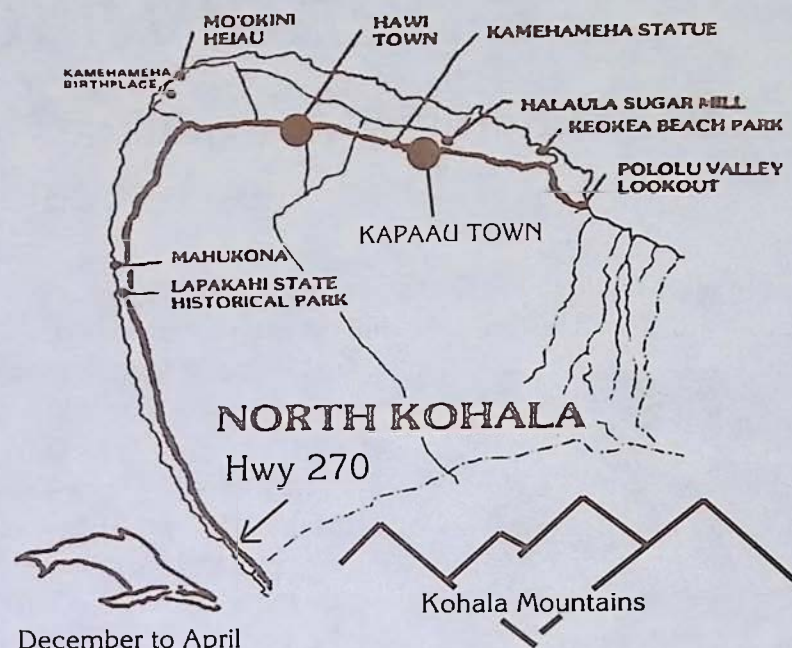
This 54 mile 12 hour adventure descends 11,000 ft. to sea level through rugged volcanic terrain, ranchland and dramatic coastal areas. Includes Kohala Mountain Adventure with breakfast and lunch included.

And now the all new...

Mauna Kea/Waipio Off Roaders!!!

For Big Island Reservations

326-4600



December to April

When you're done in town Hwy. 270 will lead you through North Kohala's fertile pasture lands, dense forests, and ultimately to Pololu Valley, which offers one of the best scenic view lookouts on the island. Along your way to Pololu there is **Wo On Gallery**, three miles past Kapaau town, which now occupies the old Wo On General Store, built by Chinese immigrants around 1920. The gallery hosts the works of only North

Fresh Tastes  
"Old Hawaii" Feeling  
in Hawi town

## bamboo

LUNCH - TUES-SAT  
DINNER - FRI & SAT  
(808) 889-5555



和安

## Wo On Gallery

featuring:  
wood, watercolors,  
wearable art,  
and much more

Devoted to the artists  
of North Kohala  
and showing work by: Sandra  
Gray, Jim Parker, Lesley Patton  
and Patrick Rankin

.7 mile past the 25 mile marker  
on 270 North  
(808) 889-5002



## Kohala Health Food & Nutrition Center

OFFERING...

HERBALS, VITAMINS, HEALTH  
BOOKS, GIFT ITEMS, JEWELRY,  
CANDLES, LOCAL PRODUCE

MASSAGE THERAPY  
Open Mon.-Sat.  
10:30 am- 6:30 pm

Located in Downtown Hawi  
**889-0277**



Kohala artists, its youngest contributor being only 6 years old. Wearable art, sculptures, pottery, woodwork and watercolor paintings by Patrick Rankin can all be found at this local gallery.

If your interests lie in seeing all there is in this region **Chris' Bike Adventures** provides a "bike at your own pace" tour of the Kohala Mountains and its towns. The bike adventure is suited for all levels of riders and is complemented with a breakfast consisting of fresh fruits and baked goodies. A picnic lunch at the beach follows the ride.

While driving along the coastline of North Kohala remember that if the skies are clear, you may be able to catch a view of the island of Maui looming from the other side of the Alenuihaha channel, which separates Maui from the Big Island. Between the months of December and April visitors are almost guaranteed a humpback whale sighting off the coast of North Kohala. This region of the Big Island is a particularly favorite spot for our migrating friends from the north. Perhaps the favorite way to cap off the afternoon in North Kohala is to stop in Kaiwihae and enjoy a Pacific Rim Italian meal at the original **Cafe Pesto** located in the Kaiwihae Shopping Center near the harbor. The reasonably priced meals are complimented by wonderful pastas, fresh salads and hand-tossed pizzas as well as an original selection of delicious desserts. If you are planning on visiting the town of Hilo Cafe Pesto can also be found in the old S. Hata Building near the bay front.

Come and enjoy this peaceful region of Hawaii. You will see and taste the wonders it has in store for you.



**Kohala Pacific Realty,  
Inc.**

(808) 889-5181



**Located in Downtown Hawi**


Specializing  
in  
North Kohala  
Properties

*As Hauri Turns*

*Clothing for the  
Hawaiian Lifestyle,  
Local Crafts*

Located in downtown Hawi  
across from Kohala Health  
Food and Pumehana Flowers  
**889-5023**





**ACKERMAN  
GALLERIES**

ORIGINAL WORKS OF  
ISLAND ARTISTS  
ORIENTAL ANTIQUES  
PRIMITIVE ARTIFACTS AND GIFTS

Open daily 9:30 to 5:30 p.m.  
Both locations in Kapaau town Hwy. 270 North  
**(808) 889-5971**

*Tropical Dreams*™ Ice Cream Factory & Cafe

OPEN DAILY: Mon-Sat 11-5 Sun 1-5 Located in Downtown Kapaau on Hwy 270 North  
889-0505 P.O. Box 557, Kapaau, HI 96755

Featuring . . .

Hawaii's famous homemade ice creams and fresh fruit sorbets...  
also serving Hebrew National Kosher Hot Dogs  
& fresh baked pesto or marinera (pizza bread) focaccia

*Ily Brand pure Italian espresso & cappuccino*

DIPPING STORES FEATURING *Tropical Dreams* ICE CREAM & FRESH FRUIT SORBETS

Waipio Art Works / Kukuhiarlie / 'Hawaii Mac Nut Plantation' Monokea / 'Tropical Dreams' Kawaihae / 'Sugar & Spice' Waimea / 'El Gerico' Waikoloa / 'Island Lava Java' Kailua-Mono / 'Kaalatukua Antiques & Art' Kaaletukua

**DON'S**

*Family*

**DELI**

New...  
Fresh Fruit  
Smoothies &  
Carrot Juice

**10% OFF**

all lunch orders over \$10  
see our coupon

sandwiches, lasagnes, quiches,  
pastas and chicken enchiladas

**CAPPUCCINO & ICE CREAM**

CAFE LOCATED ACROSS FROM KING'S STATUE  
**MON-FRI 8-6 SAT/SUN 8-5**  
**(808) 889-5822**




whether you choose...

HAND-TOSSED PIZZAS, FINE PASTAS  
OR  
SCRUMPTIOUS DESSERTS  
you will always get...

AN ADVENTURE IN TASTE

CAFE



**PESTO**  
KOHALA COAST

**OPEN FOR LUNCH & DINNER**  
Kawaihae Center, On the Kohala Coast, 882-1071

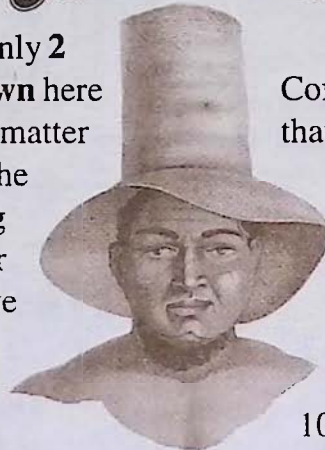


# 100% PURE KONA<sup>TM</sup> COFFEE

Hand Picked, Sun Dried and Truly Graded

Did you know that out of the **20 million pounds** of Kona Coffee bought and **consumed** every year under the name Kona only **2 million pounds** of that coffee is actually **grown** here in Kona? And the **frightening fact** of the matter is...that most Kona coffee drinkers around the world have no idea that what they're drinking is a coffee containing 90% of something other than Kona coffee. It's time for this deceptive labeling and misuse of the Kona name to end. In an attempt to preserve the coffee growing heritage here in Kona and the gourmet repu-

Coffee Times



tation of our local coffee and to combat this widespread misrepresentation of the Kona name to sell counterfeit coffee we here at Coffee Times magazine unconditionally guarantee that the coffee you receive from us is farmer direct, contains only 100% Kona coffee and meets the State of Hawaii's highest grading standards. Enjoy the pure taste of the world's finest coffee and help preserve our local farm lands by buying only 100% Kona.



*Taste our coffee while visiting Kona's largest coffee shop, Island Lava Java on Alii Drive!!!*

## ORDERING INFORMATION

Type	Roast	Lbs.	Total
_____	_____	_____	\$ _____
_____	_____	_____	\$ _____
_____	_____	_____	\$ _____
_____	_____	_____	\$ _____
_____	_____	_____	\$ _____
_____	_____	_____	\$ _____

Delivery Charges \$ \_\_\_\_\_

Please add \$3.50 for 1st pound  
& \$1.50 for each additional pound

Grand Total \$ \_\_\_\_\_

Shipping Address: \_\_\_\_\_

Please mail with check or money order to:  
Coffee Times, P.O. Box 1092, Captain Cook, HI 96704  
Please allow up to 1 week for delivery

## PEABERRY

The finest flavored coffee bean available (The result of single bean growth in the usual two bean coffee cherry)

16.95/lb. 79.95/5 lb. 149.95/10 lbs.

## EXTRA FANCY

The highest quality, high elevation, large bean coffee

15.95/lb. 74.95/5 lbs. 139.95/10 lbs.

## FANCY

Excellent quality, smaller bean, high cupping standard

13.95/lb. 64.95/5 lbs. 119.95/10 lbs.

## PRIME

The choice bean of most specialty Kona coffee consumers.

10.95/lb. 49.95/5 lbs. 89.95/10 lbs.

## FLAVORED KONA COFFEE

Vanilla, Macadamia Nut & Chocolate Macadamia Nut  
15.95/lb.

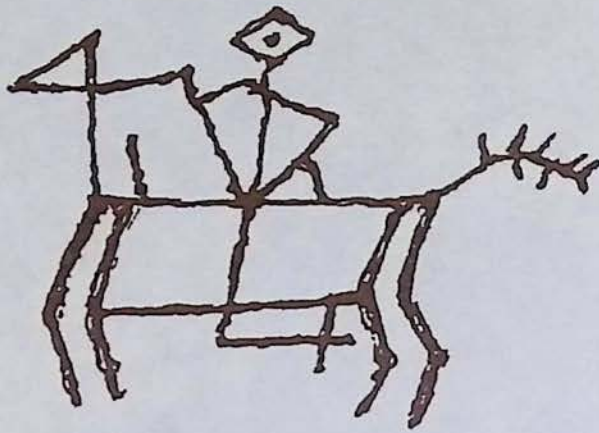
(please specify *medium, dark or espresso* roast)

WE SHIP WORLD WIDE

# CALL (808) 326-7637

P.O. Box 1092, Captain Cook, HI 96704





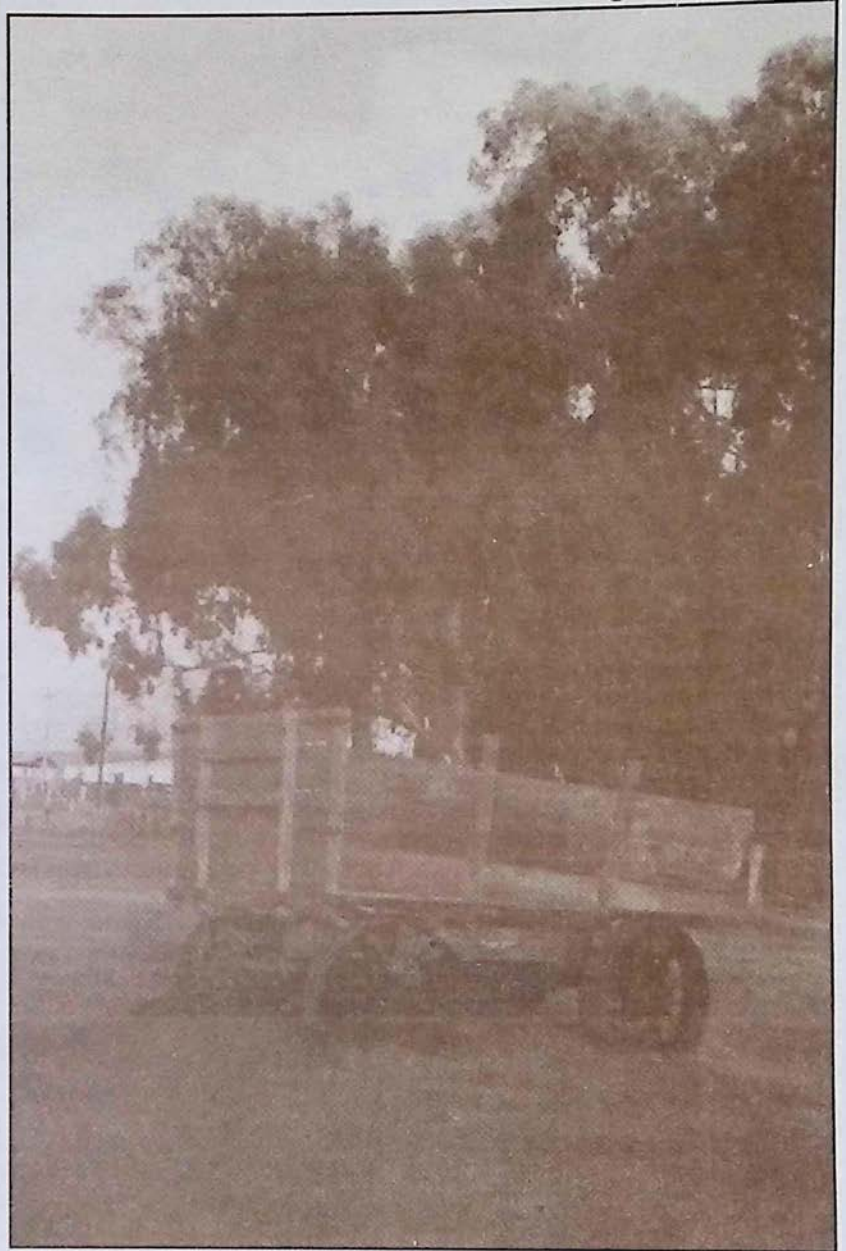
## Waimea Country

Between snow capped Mauna Kea and the Kohala mountains the green hillsides of North Kohala roll along under wispy white clouds, and afternoon rainbows frequently stream their way from the skies above Waimea. Inside this landscape herds of grazing cattle can be seen meandering their way through sloping pastures filled with cactus and dry underbrush as Hawaiian cowboys called paniolos still ride horseback and work the ranges.

Ranching began in this region of the Big Island after King Kamehameha appointed, in 1815, a young seaman named John Parker to hunt and shoot the herds of wild cattle whose population had grown uncontrollably since their introduction to Hawaii in 1793. Parker, who accomplished his mission, managed to domesticate a herd of his own before marrying a Hawaiian chiefess. The marriage helped Parker to acquire the land that would later be used to found his 250,000 acre ranch in 1847. Today's existence of Parker Ranch as one of the largest ranches in the United States gives the outsider an idea of the magnitude of its size.

Today, the town of Kamuela, more often referred to after its district name Waimea, is a town that still surrounds itself with a ranching lifestyle. The brightly colored

## In The Heart of The Big Island



### Paniolos and Snow Capped Mountains

Victorian houses and shops, tidy yards filled with flowers and skeleton remains of wagons and wheels gives visitors the opportunity to see yet another sphere of the diversity of

*continued on page 10*



### Discover the Best of Hawaii AT COOK'S DISCOVERIES

Open daily 10 a.m. to 6 p.m.

In Historic Spencer House circa 1850 - Waimea Center Next to McDonalds (Hwy 19)

(808) 885-3633

Discover proudly made in Hawai'i treasures including koa, sandalwood, coconut, mango & avocado boxes and bowls. Hawai'ian books and language tapes. Hawaiian music and hula implements. Hawaiian quilts, collectibles and authentic reproductions of ancient palaoa, tapa beaters, fish hooks, squid lures. Island wear by Nike'u, Sig Zane and Island Cowboy. Woven lauhala. Feather, Ni'ihau, wiliwili, kukui and puakenikeni leis. Custom sterling jewelry by former Cartier goldsmith and Mings. Originals and prints by distinguished Island artists including Herb Kane, Harry Wishard, Kathy Long and Doug Po'olua Tolentino. Pure Organic Kona coffee, triple chocolate chunk cookies, fresh Waipi'o poi and poi cake, lemon-macadamia and guava-rum truffles. Even Poi Dog Biscuits! Many goodies under \$15! Remember... Buy Hawaii.



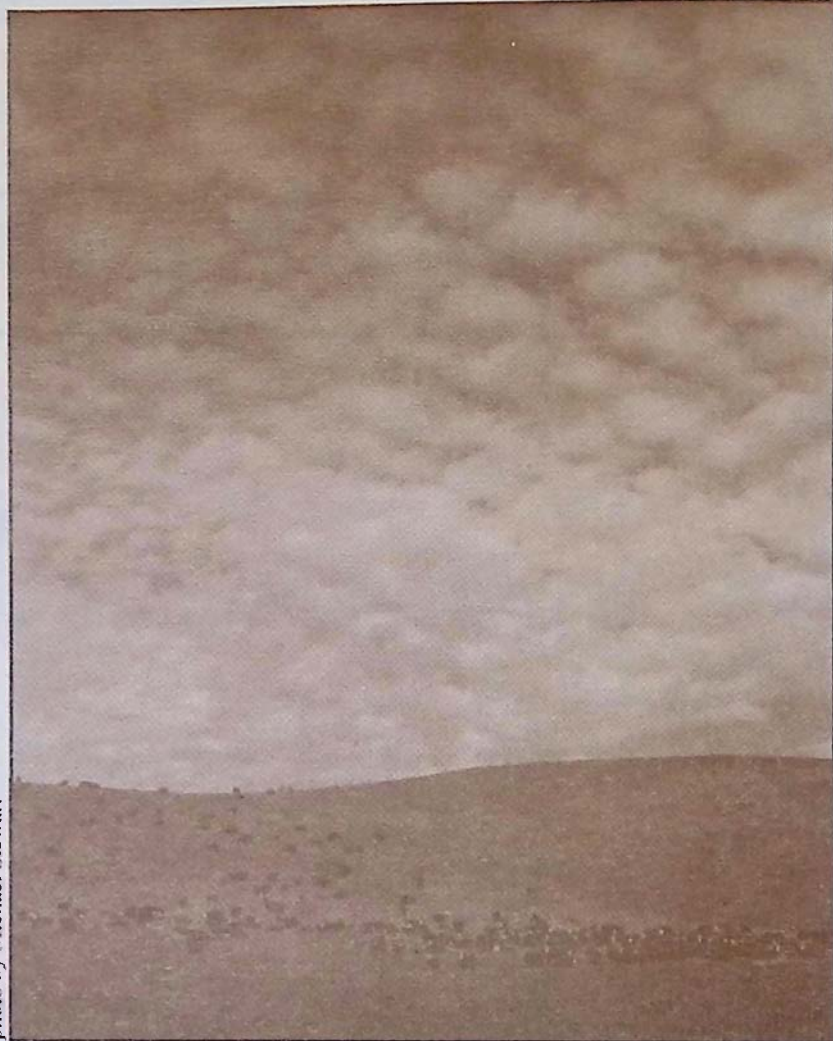




Country Charm at Waimea General Store cultures that exist in Hawaii. Beginning a tour of Kamuela with a cup of java and a bite to eat at **The Waimea Coffee and Company** is a great place to start. Across the street at Parker Square, **Waimea General Store** hosts a wide variety of Hawaii Books, and is filled with cook and dinnerware, cards, stationery, and many other interesting nick nacks.

Make sure you don't miss stopping at **Cook's Discoveries** in Historic Spencer House and **Up Country Connection** Gallery of Art & Antiques as well as **Princess Kaiulani Fashions**. All three shops are located in Waimea

photo by Michael Stewart





Cook and Dinnerware  
Hawaii Books  
Yarns, Soaps  
Cards and Stationery  
Local T-Shirts

GIFT WRAPPING & SHIPPING  
OPEN DAILY

Located In PARKER SQUARE Waimea  
885-4479



*For a welcome break in your day  
offering the best cappucino, gourmet treats & lunches  
100% Pure Estate-Grown Kona Coffees*

*We mail-order anywhere!*  
**1-800-854-5662 or 885-4472**  
In Waimea on Hwy 19  
(across from Edelweiss Restaurant)

**Original Oils,  
Bronze Sculpture**

Upcountry  
Connection

*Gallery of Art & Antiques*

**Limited Edition Prints,  
and Serigraphs**

WAIMEA'S LARGEST GALLERY OF FINE ART

*Including Koa Furniture, Marushka Hand-Beaded Jewelry and Quality Antiques*

Showcasing some of Hawaii's most talented artists

**Waimea Center ~ Kamuela, Hawaii ~ 885-0623**



Center. At Cook's Discoveries the warm aloha of a 150-year-old restored home creates a unique setting for Cook's Discoveries' one-of-a-kind collection of treasures made in Hawaii by Hawaii's proud people. Look for the Hawaiian flags across from Waimea McDonalds. The marushka hand-beaded jewelry is a must see at Up Country Connection, which is often the spot for some of Waimea's most spectacular art showings that feature the works of both local and visiting artists. Princess Kaiulani, one of Hawaii's most beautiful Princesses, spent many of her favorite hours in Waimea. Now Princess Kaiulani Fashions in the Waimea Center (two doors from TCBY Yogurt) is a must for the discriminating shopper. Locally made designer muumuus and top national clothing brands provide a choice like no where else on the Big Island. And if women's apparel doesn't suit your fancy right now, see our 24K Hawaiian Gold coin jewelry or our unique gift items. You will also enjoy the antiques, from the turn of the century, that adorn this stylishly different boutique and the feel of beautiful Waimea, an early playground for Hawaii's royalty.

The **Kahilu Theatre**, located adjacent to Parker Ranch Shopping Center, continues to bring international artists and world class entertainment to the Big Island. See their ad for current show information.

## Princess Kaiulani

FASHIONS WAIMEA

### A Stylishly Unique Boutique

"We have a large selection of designer muumuus from size 4 to 26. Although the Victorian look of Princess Kaiulani is one of our primary lines, we also carry the bold look of Designs by Puamana and by the end of this month we will have the new Elizabeth Kate Tahitian style muumu.

Some of the other leading brand names that we carry are

Alexander Brown, Zashi, Ann Ferriday, Northern Isles, Phoebe, Crazy Horse, Karen Kane, Back East, Jessica McClintock, Surya, Maggy London and more. Whether it's Hawaiian

wear, a sweater, lingerie, jeans, a casual outfit or a dress for work, you will enjoy the latest in women's fashion at PRINCESS KAIULANI in Waimea. And when you buy... be prepared for many flattering compliments wherever you wear these clothes."

COME AND VISIT

*Princess Kaiulani Fashions*

in Waimea Center (near TCBY)

tel. 885-2177 (closed Sundays)

## AMERICAN BRASS QUINTET

### LIVE AT KAHILU THEATER



The hills of upcountry Waimea will come alive with the sounds of music as the AMERICAN BRASS QUINTET, hailed "The High Priests of Brass" by NEWSWEEK Magazine, takes center stage at Kahilu Theatre on Friday, March 18 at 8:00 PM.

For more than three decades, the AMERICAN BRASS QUINTET has performed on the most prestigious chamber music series worldwide. Their unequalled performances feature repertoire ranging from their own definitive editions of Renaissance and Baroque masterpieces to commissioned works by important contemporary composers. "It is quite impossible to over praise the playing of the American Brass Quintet. They have everything: brilliance, attack, perfect ensemble and intonation, and a tone quality of unrivaled purity, range and power." THE DAILY TELEGRAPH (London)

Tickets for this "do not miss" performance are \$17.50 and \$15.00. Please call the theatre Box Office at 885-6017, Monday through Friday, 9:00 AM to 5:00 PM. Visa and Mastercard gladly accepted.

This activity is being supported by The State Foundation on Culture and the Arts, through appropriations from the Legislature of the State of Hawaii and by a grant from the National Endowment for the Arts. It is part of a statewide tour arranged by the Performing Arts Presenters of Hawaii.

R E S E R V E D

CTR

A

101

ADMIT ONE

KAHILU THEATRE

885-6017

Parker Ranch Shopping Center, Kamuela, HI

### AMERICAN BRASS QUINTET

For more than three decades, the American Brass Quintet has performed on the most prestigious chamber music series worldwide. Their unequalled performances feature repertoire ranging from their own definitive editions of Renaissance and Baroque masterpieces to works commissioned from noted contemporary composers. "Spectacular" NEW YORK TIMES "Awesome" WASHINGTON POST "Impossible to over-praise" LONDON DAILY TELEGRAPH

FRIDAY, MARCH 18, 1994

8:00 PM

Ticket Prices: \$17.50 & \$15

SEC

ROW

SEAT

CTR

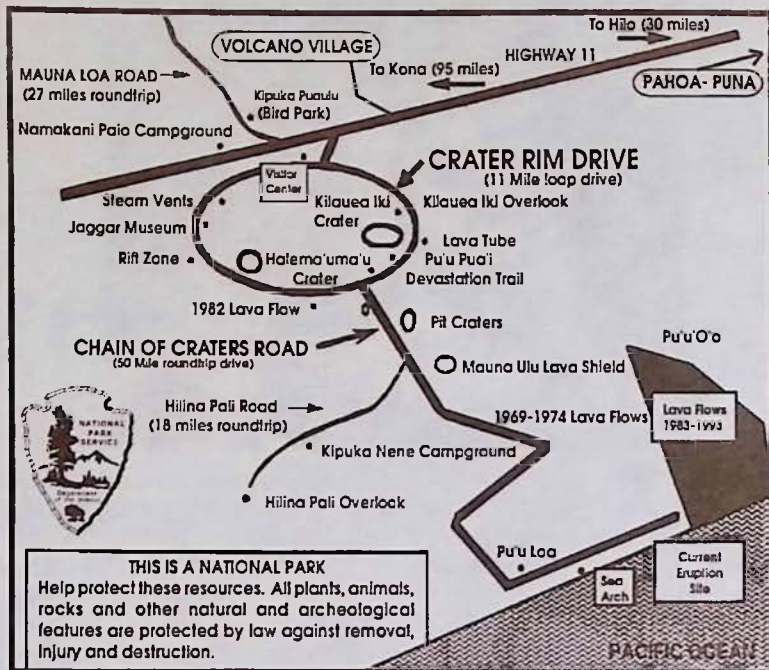
A

101

R E S E R V E D



# Volcano Region & National Park Information



Volcanoes National Park has one entrance, off Route 11, 30 miles south from Hilo or 95 miles east from Kona. The park is open 24 hours a day all year round and requires a \$5.00 entrance fee per vehicle which is valid for 7 consecutive days. The hiker/bicyclist/bus passenger fee for people

over 16 and under 62 is \$3.00.

When you enter the park during daytime hours you will receive a park brochure at the entrance station. If you enter the park after hours you may pick up the brochure at the Kilauea Visitor Center which is located a quarter mile from the entrance on Crater Rim Drive. The visitor center is open from 7:45 a.m. to 5:00 p.m. daily.

Visitors are encouraged to take the time to carefully read the park regulations and guidelines. The volcano fumes that exist in the park may create a health hazard for pregnant women, infants and people with heart or respiratory problems. People at risk should avoid stopping at the Sulphur Banks, Halema'uma'u Crater and other areas where volcanic fumes are present.

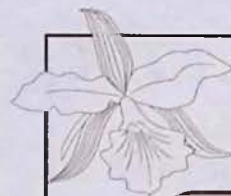
Overnight trips in the park require a backcountry permit that can be obtained at no charge at the Kilauea Visitor Center.

Once inside the park enjoy the 10-minute movie on eruptions shown hourly at the visitor's center. Other attractions are The Thomas A. Jaggar Museum three miles inside the park along Crater Rim Drive, The Volcano House, Thurston Lava Tube and scenic vistas. Depending on the timing of your visit you might have a chance to see the volcano erupting. A 20 minute drive to the end of Chain of Craters Road and a short hike will get you to the eruption site. The park also offers many other hiking opportunities which are



RETREAT...RELAX...RELIVE...  
HAWAII

P.O. Box 758 ~ Volcano, Hawai'i 96785  
808-967-796 ~ 1-800-455-3803



*Akatsuka Orchid*  
GARDENS

**FREE GARDEN TOUR**

*Wander in awe through our covered garden of exotic orchids and island plants then help your self to a FREE orchid blossom. We feature Certified Hawaiian orchid plants, cut flowers & anthuriums. Take them home or we'll ship them for you!*

LOCATED ON HWY. 11

22 1/2 MILES FROM HILO

(808) 967-7660 P.O. Box 220, Volcano, HI 96785

*Aloha Volcano  
Vacation Rentals*

Modest to Luxurious  
Accommodations,  
Romantic Hideaways  
for Two or Homes with  
Great Family Value.

(808) 967-7683  
1-800-845-LAVA

## VOLCANO ART CENTER GALLERY

The finest in island arts and crafts  
Located next to the Kilauea Visitor Center  
in Hawaii Volcanoes National Park  
Open daily 9 a.m. to 5 p.m.

EXHIBIT: "Reflections from the Mind's Eye" by  
Patricia Van Asperen-Hume & Mary Lovein  
March 5 - March 31  
Opening Reception: March 5, 1-4 p.m.

See Coffee Times Calendar for classes and workshops.

The Volcano Art Center is a nonprofit arts and educational organization founded in 1974. Call 967-8222 for information.

CARSON'S

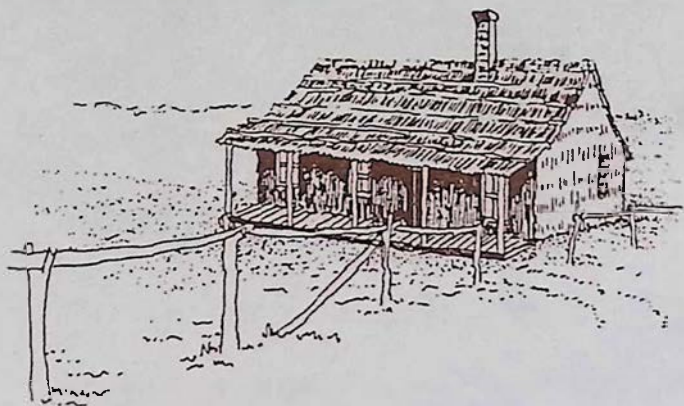
VOLCANO COTTAGE

Volcano's most private and inviting B&B



Experience The True Fantasy  
Of Hawaii ~ Forested Garden  
setting ~ Separate Guest  
Rooms & Cottages ~ Hot Tub ~  
Wood Burning Stove ~  
Amenities Without The Price  
(808) 967-7683  
1-800-845-LAVA





## The Original Volcano House,

Now the Volcano Art Center at Volcanoes National Park.

mapped out in the park brochure.

Before leaving you won't want to miss The Volcano Art Center, adjacent to the visitor center. The Art Center hosts the works of some of Hawaii's finest artists. The Center is also responsible for many of the art, cultural, environmental, and community activities happening in the park. The dates and times of these activities are listed in the Coffee Times calendar

A reminder to drive slowly and carefully while touring the park as it will help to protect Hawaii's endangered state bird, the nene.

Lodging, gas, camping supplies and dining all can be found in Volcano Village just a short drive from the park. When in the village stop by Wood Carver's Corner. This cozy shop is filled with wood arts from around the world including Native American and Hawaiian crafts.

Because of the remote location of the volcano, the numerous Bed & Breakfasts existing in the region are a favorite choice among visitors staying in Volcano. A complete listing of Volcano B & B's can be seen on page 29 of Coffee Times. A few particular favorites are My Island Bed and Breakfast, Carson's Volcano Cottages, Chalet Kilauea and Hale Ohia Cottages. If you are looking for seclusion, Carson's Volcano Cottages are tucked away in the region's rainforest and offers guests the most in privacy as well as a hot tub and even wood burning stoves to keep you warm on those cool volcano nights. Chalet Kilauea, The Inn at Volcano, features rooms decorated with art from around the world and even a treehouse suite, a unique alternative for couples looking for that romantic getaway. My Island Bed and Breakfast, located on a five acre botanical estate, is an 1886 missionary home offering guests the

choice of rooms in either the main house or garden apartments. Located off of Hwy. 11 are the private Hale Ohia Cottages surrounded by bonsai-style gardens and moss covered grounds. The suites and cottages are both spacious and comfortably outfitted.

Perhaps one of the most memorable dining experiences on the Big Island can be found at Kilauea Lodge, which features continental cuisine beside the historic fireplace of friendship. The mountain lodge also hosts twelve romantic rooms for overnight visitors. One spectacular stop you do not want to miss when you are in the volcano region is Akatsuka Orchid Garden. Seeing is believing when you arrive at this exotic and tropical garden. Visitors are welcome to free tours and complimentary orchids during their visit.

For Park Information Call: (808) 967-7311

For Eruption Update Call: (808) 967-7977



Print of the Volcanoes by M. Dumont D'urville circa 1836 from Voyage Pittoresque Autour Du Monde



## Woodcarver's Corner

Wood Arts, Hawaiian & Native American, Crafts, Paintings, Gifts and more...

Located at corner of Haunani Rd. & Old Volcano Hwy.,  
Wed. - Sun. 10-5. For brochure send 50 cents to:  
Box 867, Volcano, HI 96785, 985-8518

Twelve Romantic Rooms ~  
Fabulous Fireside Dining Nightly 5:30 - 9:00 p.m.

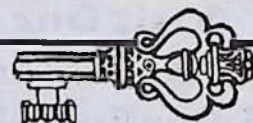


## KILAUEA LODGE

...only minutes from Volcanoes National Park

VOLCANO VILLAGE ~ HAWAII ISLAND ~ (808) 967-7366

No Booking Fee



967-7244

## Volcano Reservations

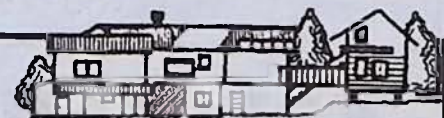
SELECT STATE WIDE ACCOMMODATIONS

Bed & Breakfasts ~ Cottages ~ Vacation Homes ~ Condos

Your Key To Hospitality

BUDGET TO LUXURY ~ GREAT VALUE

## Chalet Kilauea - The Inn at Volcano



EXPLORE TREASURES FROM AROUND THE WORLD

Unique Theme Rooms ~ TreeHouse Suite ~ Vacation Homes

Jacuzzi ~ Fireplace ~ Library ~ Garden

Gourmet Breakfasts

967-7786

Afternoon Tea



# Manoa Valley

## The Mother Plantation To All Hawaiian Coffees

by Larry Douglas

Don Fransisco de Paula Marin planted the first coffee crop on the island of Oahu in either 1813 or 1817. The exact year of the planting is not known because the handwritten date of this planting recorded in Marin's journal is very old and difficult to read. What we do know is that Marin did plant the first coffee in Hawaii and that he lived in Hawai'i from 1791 to 1837. Marin was also responsible for the first importation of grapes, which were used to start Hawai'i's first vineyard and later lead to the first wine production in the islands. In place of the vineyards today is Vineyard Blvd., which runs through downtown Honolulu. As for Marin's coffee, it will never be known what happened to this first crop of coffee in Hawaii but it is believed that it failed as a result of the salty soil that comprised the grounds of Marin's compound, which ran along the shores of Honolulu Harbor. Marking this spot today is the Marin Tower, now standing along Honolulu's waterfront.

The mother of all Hawaiian coffee originated in 1825 when Oahu's Governor Boki and English agriculturalist John Wilkinson planted both coffee and sugar cane in the rich and fertile Manoa Valley, located just above what was then the small city of Honolulu.

The events contributing to the arrival of this coffee began in

England, where in that same year the visiting King and Queen of Hawai'i, King Kamehameha II (Liholiho) and Queen Kamanalu, died from a deadly measles epidemic that swept through London and the nearby countryside. After the tragedy Governor Boki, also along on the trip, met with the Queen of England to begin the sad task of preparing the bodies of the young King and Queen of Hawai'i for their final voyage home. The Queen of England commissioned one of her finest ships, the H.M.S. Blonde, for the voyage to Hawai'i and appointed Captain Lord Byron to her command. Before setting off for Hawaii the ship was fitted with black drape sails as a sign of mourning for the deceased.

Before the death of the Hawai'ian King and Queen, Governor Boki had met a man of great interest to him and Hawai'i's future, John Wilkinson, a well known English agriculturalist who had built some of England's most successful coffee and sugar plantations in the West Indies for the English Crown. After long negotiations with Governor Boki and a small nudge from the Queen of England Wilkinson agreed to leave for Hawaii on the H.M.S. Blonde.

On the long voyage back to Hawaii the party stopped in Rio De

*continued on page 19*



**Visit Our  
Roasting Room inside our  
Kainaliu Cafe**

See Our Coupon for a  
**FREE POUND OF COFFEE**  
When you purchase 5 lbs.

**FOR MAIL ORDER**  
**1-800-338-7139**

### OUR COFFEE IS ROASTED FRESH DAILY

**The Bad Ass Coffee Company**  
**(808) 322-2646**

#### CAFE LOCATIONS:

**The Bad Ass Coffee Co., 322-9196**  
Kainaliu Next to Crystal Star Gallery  
**The Bad Ass Coffee Co., 326-4637**  
Kailua Waterfront Row on Alii Drive  
**The Bad Ass Coffee Co. Kailua Warehouse**  
Next to Giuseppe's Italian Cafe on Alii Drive **329-8871**  
**The Bad Ass Coffee Shack of Kaiwihae**  
Above Cafe Pesto in Kaiwihae Shopping Center  
**882-7019**

#### INDEPENDENT DISTRIBUTORS

**Hawaii Mac Nut Plantation Inc.,**  
Honoka'a Lower Lehua St. **775-7201**

**Long's Drugs**  
In Hilo & Kona

**Keep In Touch, 885-7191**  
Waimea The Parker Ranch Shopping Center  
**AND COMING SOON...**  
The Bad Ass Cafe in Kihei, Maui



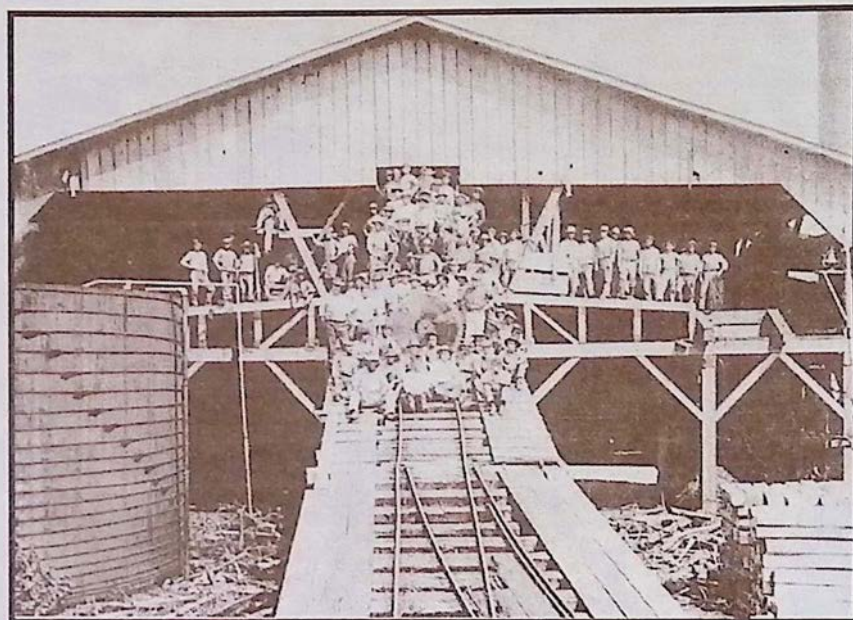
# Historic Main St. Pahoa - Puna, Hawaii Quaint Shops, Local Food, Arts, Crafts, Theater

For visitors who want to experience the true feeling of old Hawaii, Pahoa village holds the key to this untouched past. First a rugged sawmill town then a sugar town and later a crossroad on the old railroad, Main Street Pahoa has maintained its western style storefronts and wood boardwalks in a charming turn of the century Victorian style.

Quaint shops from surf, to curio and restaurants span the flavors of the globe from Thailand, to Mexico and Italy and make Pahoa Village one of the most pleasurable and tasteful stops on the Big Island.

Call ahead to any of the friendly shops to see if there are any special events scheduled during your visit. Pahoa has the reputation of holding some lively and entertaining performances both on its Main Street and at the Akebono Theater, Hawaii's oldest theater.

The countryside surrounding Pahoa is filled with natural wonders like the Lava Tree State Park, steam vents, groves of papaya trees and black sand beaches along the rugged Puna coast. Visitors are warned however that a prolonged stay in this Aloha time capsule may make leaving a very difficult task.



The Pahoa Lumber Mill (circa 1900-1917) photo courtesy of the citizens of Pahoa

## Hawaiian Rainforest Garden & Gift

Send Fresh - Cut Tropical Anthuriums  
Long Lasting - Direct From The Grower



1 DOZEN ELEGANT ANTHURIUMS  
with tropical foliage 21.95

Includes Federal Express Delivery anywhere in the U.S.A.  
VISA or MasterCard accepted

(808) 965-9576 or 1-800-473-7630

**The Godmother** 965-0055  
Breakfast, Lunch & Dinner  
8 a.m. to 11 p.m.

EVERYTHING HOMEMADE

Delicious authentic  
New York-style Italian cuisine  
Located in historic Pahoa Village

## PAHOA HARDWARE

965-6459

OPEN 7 DAYS

## CAMPING SUPPLIES

Plumbing, Electric, Nuts, Bolts,  
Paint Supplies, Garden & More  
P.O. Box 967, Main St.  
Pahoa, HI 96778

**NATURAL GROCERIES**  
**PAHOA**  
Organic produce Health Foods  
Open 9 - 9 p.m.  
Sunday 9 - 6 p.m.

**THE VILLAGE INN**  
HISTORIC PAHOA  
BUILT IN 1910  
P.O. BOX 1987 • PAHOA HAWAII 96778  
(808) 965-6444  
LODGING & HAWAIIANA  
CURIO SHOP  
\$39.95 double & up

FOUNDED 1917  
**AKEBONO THEATER**  
Local Performing Arts Center  
Plays, Movies, Live Music  
CALL (808) 965-9943  
or  
see Coffee Times Calendar for show schedule.

**LUQUIN'S**  
MEXICAN RESTAURANT  
Chili Relleno, Carnitas,  
Tamales & Taquitos  
FREE CHIPS & SALSA  
with Dinner  
OPEN DAILY  
11 a.m. to 9 p.m.  
965-9990

**Naung Mai**  
Thai Kitchen  
"We serve Cheng Mai,  
Bangkok & Phuket style cuisine."  
Vegetarian Entrees offered  
Mon. - Fri. 12-8:30  
Closed Sat. & Sun  
965-8186

**NATURAL EMPORIUM**  
**PAHOA**  
Imports, Clothing,  
Jewelry, Gifts,  
Open 10 am to 6 pm

**HAWAIIAN HEMP COMPANY**  
HEMP FASHIONS  
CLOTHING  
FOOD  
PAPER  
LITERATURE  
& ART  
(808) 965-8600  
Pahoa Village  
Send \$2  
For our catalog of products  
P.O. Box 2056, Pahoa, HI 96778

**BAMBOO HOUSE**  
Unique Private Lodging  
in Downtown Pahoa  
Call  
(808) 965-8322  
for Information



# HAWAII

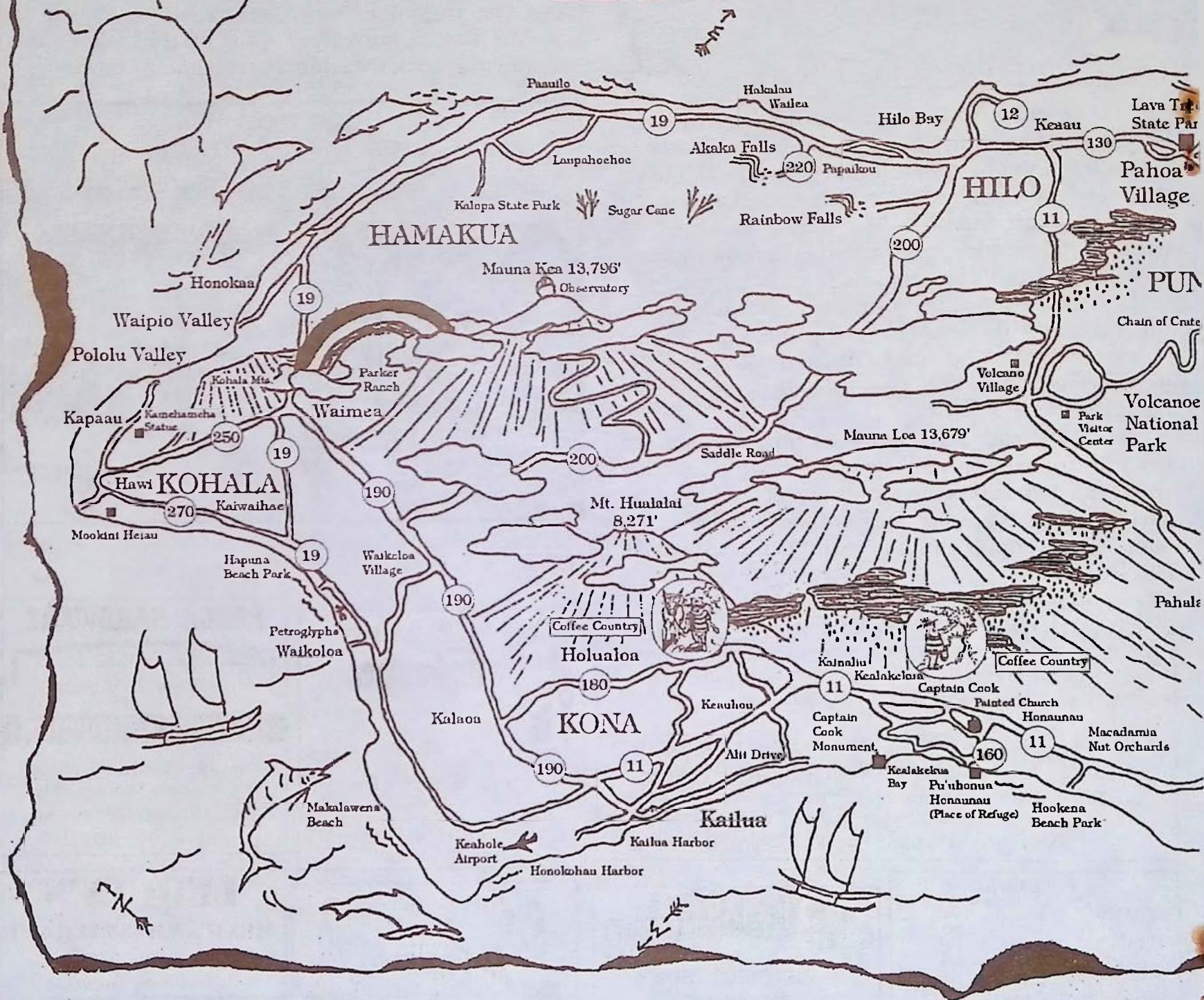


photo by Michael Stewart

*Poinsettias along a hillside road in Kona*



photo by Michael Stewart

*Sunset at Kailua's Kahaluu Beach Park*



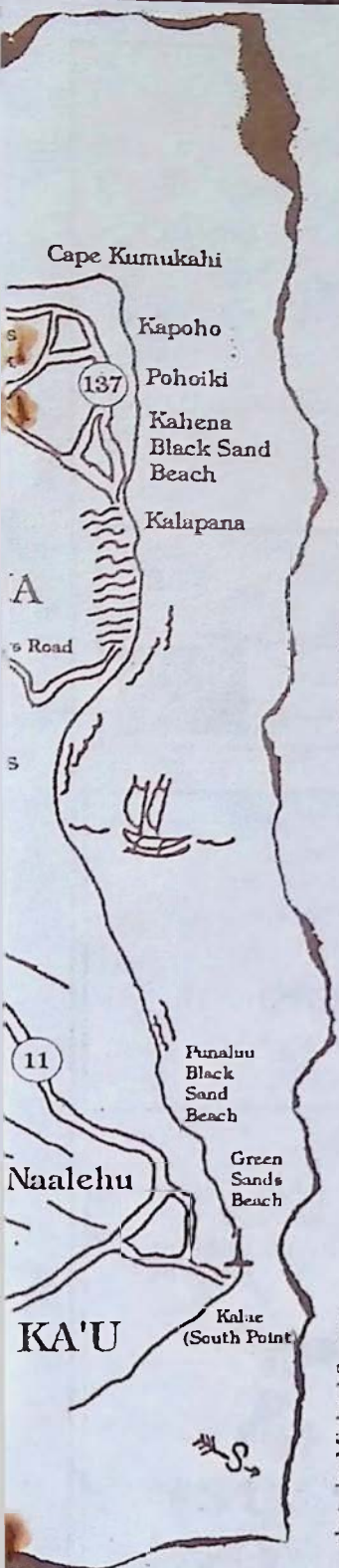


photo by Michael Stewart

*Kalapana's Father Damion's Painted Church rescued from the lava.*



photo by Michael Stewart

*Aerial view of lava entering the ocean at Volcanoes National Park.*



photo by Michael Stewart

*Ancient petroglyphs of the Kohala Coast*

## What to see:



### HISTORIC HILO

Early 20th century Hawaii happily lives on in the storefronts and buildings of this yesterday town. Outside the town are magnificent Akaka Falls and Hawaii Tropical Botanical Garden to the north.



### VOLCANOES NATIONAL PARK

Home of Pele, the Hawaiian goddess of fire. A region of unique features, volcanoes and a diverse biosphere. See page 6 of Coffee Times for volcano information.



### CAPTAIN COOK MONUMENT

The spot in Kealahou Bay where English navigator, Captain James Cook was killed in 1779.



### PU'UHONUA HONAUNAU

An ancient Hawaiian village that is now a national park. Located in south Kona. Stop and see the Painted Church along the way on Hwy 160.



### WAIPIO VALLEY LOOKOUT

Spectacular views into a lush valley of waterfalls, rivers and cascading cliffs. (4WD, horse, or a hike are necessary for access into the valley)



### WAIMEA COUNTRY

In the heart of Big Island ranch country this western style town sits at the base of Mauna Kea.



### AKAKA & RAINBOW FALLS

Two separate waterfalls northwest of Hilo. Easily accessed by car and short enjoyable paved hikes.



### HEIAUS & PETROGLYPHS

Both can be found on the Kohala coast. The petroglyphs can be seen by following a path on top of the lava rocks at the Royal Waikoloan Resort.



### POLOLU VALLEY LOOKOUT

A northern valley lookout. The road there will take you through friendly N. Kohala towns and perhaps a view of Hawaii's neighboring islands.



### PUNA DISTRICT

Hosts the rustic western style town of Pahoa in addition to wild roadside orchids, steam vents, Lava Trees State Park and black sand beaches.



### SOUTH POINT U.S.A.

The southern most point in the U.S. It boasts a magnificent ocean side drive through rolling green hillsides filled with Holstein cows grazing above a coast line of rugged cliffs and crashing waves.

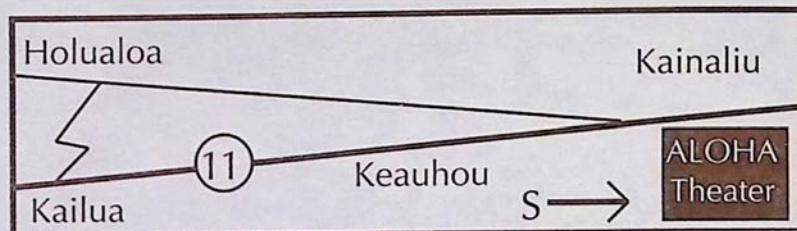


# ALOHA THEATER COMPLEX IN KAINALIU



Located just a short drive south on highway 11 from Kailua-Town, central to Kona's coffee country, is the historic Aloha Theater Complex built in 1932. Local theater performances produced by the Aloha Performing Arts Center and various other local community groups are on stage every month at the complex that also hosts a Cafe, Village Store and Dance Academy. At the cafe visitors can enjoy breakfast, lunch and dinner, which including many vegetarian specialties. A second floor bake shop turns out breads, cakes and cookies that fill the glass case just inside the front door to the theater.

Relax on the outside lanai while you sip a cup of pure Kona coffee, something very few restaurants on the Big Island actually serve. Wander next door to the Village Store and find Hawaiian gifts, fresh fruits and always a local tune playing through the speakers. To round off this Aloha experience, the local Academy of Dance run by Reni Damron is always alive with people of all ages practicing tap, ballet or jazz in the hall located at the north end of the complex.



BALLET

TAP

JAZZ



*Damron's*  
ACADEMY  
of DANCE



ALL AGES

(808) 322-8119

P.O. Box 325, Kealahou, HI 96750



8 a.m. to 6 p.m.  
Monday - Saturday  
8 a.m. to 8 p.m. Fri.  
9 a.m. to 4 p.m. Sun.  
322-9941

## Great gifts for All Occasions

Groceries, organic foods, fruit (fresh & dried)  
vitamins, teas, coffees, island music tapes



"DELICIOUS HOMEMADE GOODNESS"

Open for breakfast, lunch & dinner

8 a.m. to 8 p.m. Mon. - Sat

Sunday Brunch 9 a.m. to 2 p.m.

## THE BEST BURGERS IN KONA

MEXICAN SPECIALTIES

FRESH BAKED BREADS, CAKES, COOKIES...

ESPRESSO BAR

INTERNATIONAL BEER & WINE SELECTION

IN THE HEART OF KONA COFFEE COUNTRY

**322-3383**



The Aloha Performing Arts Center  
in association with  
The Aloha Children's Theatre  
presents



From the book by  
Frank B. Gilbreth, Jr. and Ernestine Gilbreth Carey  
Dramatized by Christopher Seagel  
Directed by Jerry Tracy

**March 4, 5, 6, \* 10, 11, 12, 13, \* 18, 19**  
Evening performances at 8:00 p.m. \* Denotes 4:00 p.m. Matinee  
**Tickets: \$8.00 Adults, \$6.00 Children & Seniors**

**Aloha Theatre • Kainaliu • 322-9924**

Tickets available at:  
Skye's Hallmark Shop  
Keauhou Village Bookstore  
Aloha Village Store and at the door

Sponsored in part by a grant from the State Foundation on Culture and the Arts



continued from page 14

Janeiro to replenish supplies. While in port Wilkinson traveled to some of the large coffee plantations and purchased over 100 coffee seedlings and fertile coffee seeds which he stowed below deck for the voyage to Hawaii.

On May 6, 1825 the H.M.S. Blonde entered Honolulu Harbor with its sails draped in black. It was a sad time for the small Kingdom of Hawaii when they learned about the deaths of their young King and Queen and hundreds of mourners, many in tears and crying, waved black handkerchiefs as they greeted the arriving party.

Because of the sad occurrence of the day no mention was made of the coffee seedlings that had survived the voyage from South America. Wilkinson however, in the days following the arrival, went to work planting the coffee seedlings on Governor Boki's Manoa Valley land. The coffee thrived and grew at an amazing rate in its new environment and before long word of this success quickly spread throughout the Islands.

In 1827 Wilkinson became ill and died, some saying as a result of his working to death in clearing and planting the land for new coffee. One year later in 1828 the Manoa Plantation received two new varieties of coffee from the Philippines and Batavia and were cross bred with the coffee already growing in the Valley. The cross breeding led to the variety that is known today as "Hawaiian Coffee". This "Hawaiian Coffee" strain was analyzed, finger printed and kept on record in England.

Farmers from Oahu, Kauai, Maui and Big Island visited the Boki plantation in Manoa Valley and were allowed to take their own coffee seedlings and cuttings back to their islands for cultivation. Soon after this sharing of coffee plantations were growing through out the island of Oahu, in the Waianae Valley, Makaha Valley, Niu Valley and

on many small farms as well. Big Island coffee plantations started and thrived in Kurtistown, Kona and along the Hamakua coast while the island of Kauai became the home of the first successful large scale coffee plantation in the islands. Kauai's Kukui Grove was almost completely planted in coffee. Maui also had a few large coffee plantations. In 1845 Hawaii exported 248 pounds of green coffee and in only five years time this number grew to 208,428 pounds.

"Hawaiian Coffee", which was in great demand all over the world at premium prices, was being exported to America, Japan, England and even as far away as Germany and Russia. By 1901 Hawaii's coffee exports exceeded 2,000,000 pounds, exports remained in the millions up until 1935 when over 5,000,000 pounds were exported.

During depressed times coffee prices fell to all time lows forcing most of Hawaii's coffee plantations into bankruptcy or sugar cane production. Much of the coffee that survived these collapses in the market existed on the Big Island in a 20 mile belt of land known as Kona. Between the elevations of 800 feet and 3,000 feet on the western slopes of Mauna Loa and Mt. Hualalai Kona's farmer's lived through many lean years in the coffee business.

In Hawaii, coffee trees thrive with almost no help from humans but with some added hard work Hawaii's yield per acre was ten times larger than any other place in the world. 168 years later this fact still holds true today and Hawaii's still produces the world's richest most aromatic coffee. But, it was the small family owned Kona coffee farmers that kept Hawaii's coffee industry alive with the highest quality coffee beans. Today, a renaissance in Hawaiian coffee farming is taking place with the islands of Kauai and Molokai beginning large scale productions of coffee with plantations on Maui to follow. Soon enough all the Hawaiian Islands will once again be back in the coffee business.



**KEEP KONA COUNTRY  
BUY A FARM!!!**

**ARNOLD RABIN (R) (GRI)**  
PRINCIPAL BROKER

**A REAL ESTATE CONCERN-HAWAII**  
(808) 322-3677 / FAX: (808) 322-6119  
P.O. BOX 766, CAPT. COOK, HI 96704 / (RES) 328-2386

**SERVING THE KONA COFFEE  
COMMUNITY SINCE 1980**

*From the Southernmost District of Hawai'i Island*

**KA'U LANDING**

(808) 928-6449  P.O. Box 160, Pahala, Hawai'i 96777

*In-depth and ongoing coverage of the land, the people and the issues that affect the present and the future of our Big Island Communities.*

☐ 1 year (12 issues) \$12    ☐ Sample Copy \$1.50



**FREE BOTANICAL  
GARDEN TOUR**

Buy one get one Free Papaya Boat filled  
w/ Tuna Salad & Herb Dressing!!!  
see our coupon

*Homemade sandwiches, soups, full  
vegetarian fare, Kona Coffee, fresh baked pies*  
OPEN 11 am to 3 pm (7 days a week)  
(808) 328-9930 P.O. Box 18 Honaunau, HI 96726

**A TRULY RURAL DINING EXPERIENCE**

**WAKEFIELD  
GARDENS  
& RESTAURANT**

Located in the heart of coffee country, Hwy 11 south to  
Hwy 160 (Painted Church & City of Refuge)



# Do Whales Vocally Communicate With Each Other?

by Dan McSweeney

Whale communication is one of the most intriguing aspects of cetacean behavior. Like other mammals, whales communicate with each other with sounds; different species use different kinds of sounds in different ways. These sounds range from the whistles of dolphins - to the sperm whale who makes a series of "clicks" - to the voice of the blue whale, which is the loudest of animal sounds and may carry underwater for hundreds of miles. Communication seems most sophisticated in the toothed whale species such as dolphins, pilot whales, and killer whales. These species have brains with relatively much larger acoustic regions, which they use for sound production and analysis. Toothed whales, like the Pilot whales, even make two types of sounds: calls and echolocation or cetacean sonar. Baleen whales, like the humpbacks, use calls, but they have no echolocation ability - that we know of so far.

## AN EXTRAORDINARY SONG

The "song" of the humpback whale has to be one of the most unusual phenomena in the natural world. Perhaps you've heard this eerie, mysterious sound while snorkeling or diving off the Kona Coast. The song appears to be sung only by males and generally only on the winter breeding grounds here in Hawaii and elsewhere. The song is a series of themes or patterns that male humpback whales seem to sing in a fundamental sequence. The discovery of humpback whale song patterns and the recording of their songs was first done as recently as 30 years ago, using an underwater recording device called a hydrophone. But humpback songs are not new to man. Some think the songs may have been heard by the Greeks through the hulls of their ships and became the legendary "Sirens" of Greek Mythology. In our era, recordings of humpback whale songs were among the items placed aboard the Voyager Rocket probes on their journeys to distant galaxies.

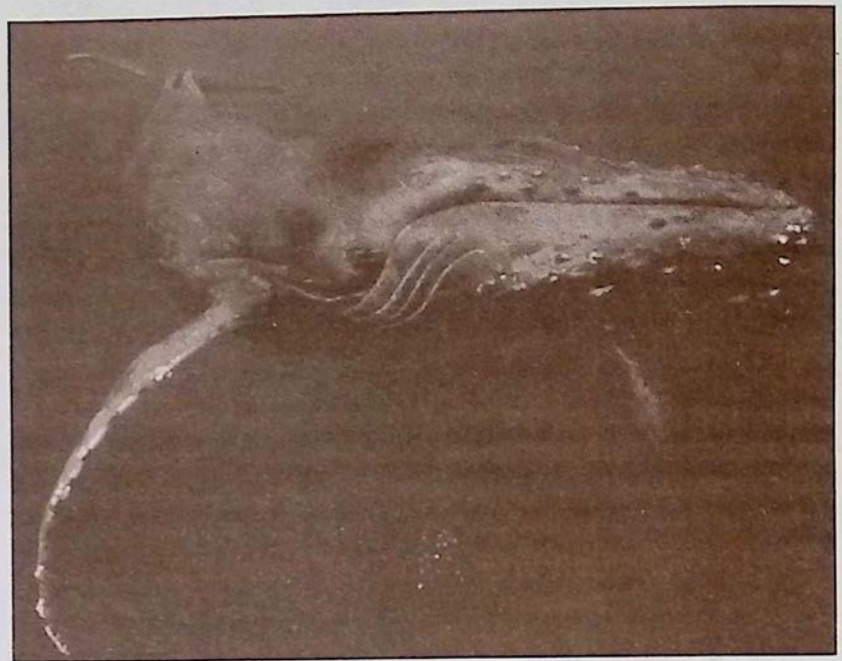
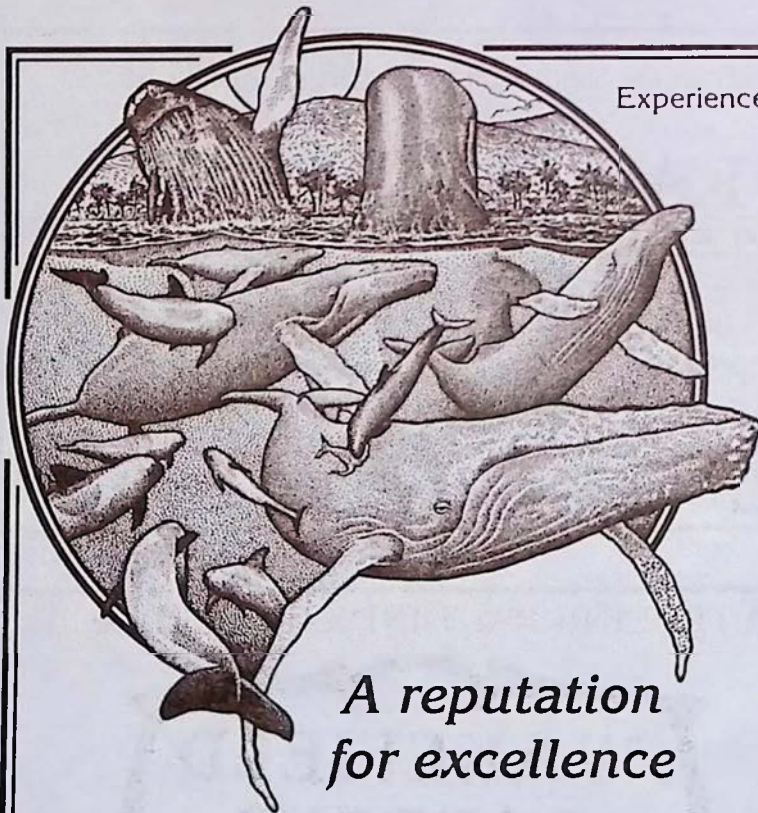


photo by Dan McSweeney

## WHALE OF A THOUGHT

Whale communication is something researchers have been able to identify and describe, but what whales are actually communicating is still very much a mystery. We believe that the humpback whale song may be associated with breeding. Each pod or group of killer whales, Orca, have their own set of calls known as its dialect. What the specific calls mean or what the function of the differing dialects is, we really have no idea. Also, remember that some whales make sounds above and below the range of human hearing, so we may not even hear some of their communication.



*A reputation  
for excellence*

**3 Hour Daily Cruises**  
**Special Family & Kamaaina Rates**

HELP PROTECT THE WHALES.  
Proceeds benefit whale conservation.

Experience is the difference between Whale Glimpsing and Whale Watching!

**Kona's Only Guaranteed  
Year-Round**

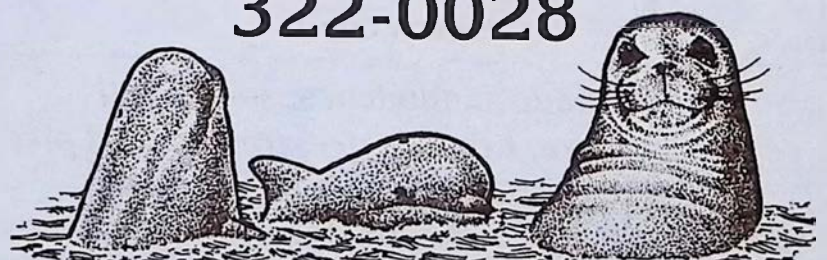
*Whalewatch*

**With Capt. Dan McSweeney**

Experience the whales with a devoted professional researcher/guide who has spent the past 20 years and over 30,000 hours around Hawaii's whales.

Call for information & reservations:

**322-0028**



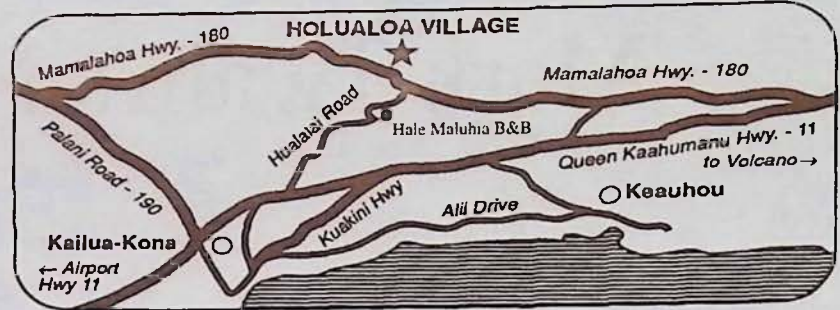


# Holualoa, Aloha & Art

Days pass slowly in the artist's retreat town of Holualoa, almost like the gentle mountain breezes which weave their way through the groves of coffee trees lining the slopes of Mt. Hualalai. Steeped in natural beauty and tradition, this little mountainside coffee town blends a touch of today's art with a passion for the simpler life of the past. The village's many private galleries showcase the works of many local artists in a wide array of mediums.

When you are done visiting the galleries, the friendly local espresso bar, **Holuakoa Cafe**, will undoubtedly snatch an hour or two from your day and maybe more if you decide to indulge in the homemade cake and pastry selection. Every Thursday night the sound of acoustic guitars may be heard in the night air strumming over a chorus of 'gone happy' coffee drinkers packing the cafe for Holualoa's only nighttime entertainment. (Give cafe owner, Meggi Worbach, a call at 322-CAFE for an up to date scoop on her local entertainment schedule).

If you are looking for a place to spend the night, **Hale' Maluhia** (House of Peace) Bed and Breakfast is located below the village on Hualalai road. This rambling home offers guests a sense of seclusion and



a touch of paradise and is outfitted with several lanais, an outdoor spa, kitchen and even office facilities.

Make it a point to wander up for a visit to Holualoa you will love this adorable country town.

## Exotic Belly Dancing & Middle Eastern Music LIVE AT HOLUAKOA CAFE IN HOLUALOA TOWN

March 15 & 16,  
7:30 p.m. to 10:00 p.m.

Featured Dancers are Sahira & Elisheva  
with Souren Baronian on Clarinet and Haig Manoukian on Oud.  
*Dress up in Middle Eastern Costume (Prizes for Best Costume!!)*

Tickets are \$10, sold at **Holuakoa Cafe 322-CAFE**  
Advance purchase recommended and doors open at 7:00 p.m.

## Hale' Maluhia Bed & Breakfast

*A Rambling Plantation Home Nestled  
in the Heart of Coffee Country*

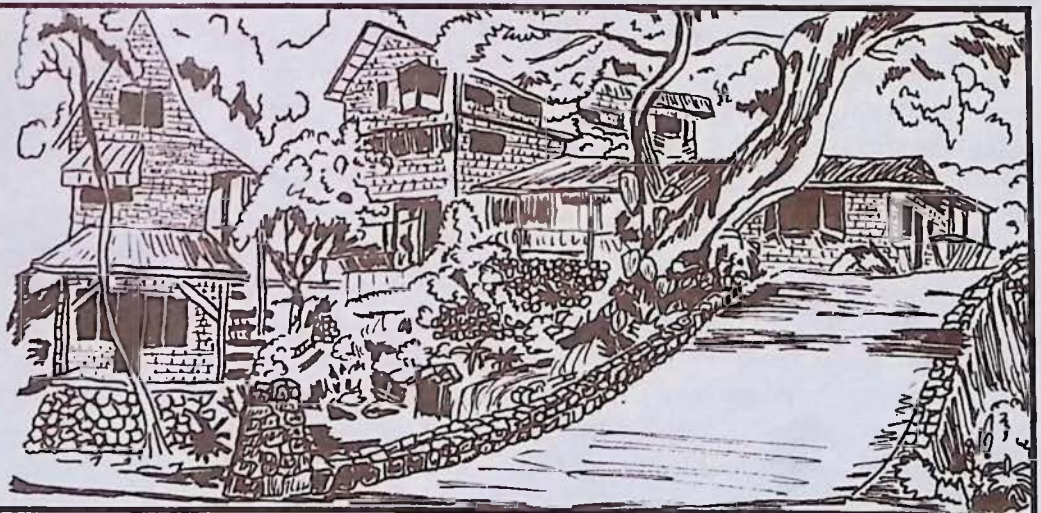
- \*Affordable Rooms \$45-\$75
- \*Private Baths
- \*Country Setting
- \*Hot Tub
- \*Close to Village & Airport

For reservations or a FREE brochure write or call:

76-770 Hualalai Rd. Kailua-Kona, HI 96740

1-800-559-6627

(808) 329-1123, 329-5773, 936-3300, Fax 326-5487



Cafe owner, Meggi Worbach,  
and the Holuakoa regulars.

## Holuakoa Cafe Espresso Bar

LIVE MUSIC ON THURSDAYS 7:30 P.M. to 10:00 P.M.

~Fresh Kona Coffee~Local Pastries  
and Snacks~In a purely up-country  
Kona wake-up atmosphere

Open Mon-Sat 6:30am - 5pm

German, French and Greek spoken

322-CAFE

1 FREE  
CUP OF  
100%  
PURE  
KONA  
COFFEE

See coupon insert



# Mark Twain's Night in Volcano

June 3, 1866

Mark Twain's twenty-fourth Letter to the Sacramento Union

## A NOTABLE DISCOVERY

Arrived at the little thatched lookout house, we rested our elbows on the railing in front and looked abroad over the wide crater and down over the sheer precipice at the seething fires beneath us. The view was a startling improvement on my daylight experience. I turned to see the effect on the balance of the company and found the reddest-faced set of men I almost ever saw. In the strong light every countenance glowed like red-hot iron, every shoulder was suffused with crimson and shaded rearward into dingy, shapeless obscurity! The place below looked like the infernal regions and these men like half-cooled devils just come up on a furlough.

I turned my eyes upon the volcano again. The "cellar" was tolerably well lighted up. For a mile and a half in front of us and half a mile on either side, the floor of the abyss was magnificently illuminated; beyond these limits the mists hung down their gauzy curtains and cast a deceptive gloom over all that made the twinkling fires in the remote corners of the crater seem countless leagues removed- made them seem like the camp-fires of a great army far away. Here was room for the imagination to work! You could imagine those lights the width of a continent away- and that hidden under the intervening darkness were hills, and winding rivers, and weary wastes of plain and desert- and even then the tremendous vista stretched on, and on, and on! -to the fires and far beyond! You could not compass it-it was the idea of eternity made tangible-and the longest end of it made visible to the naked eye!

The greater part of the vast floor of the desert under us was as black as ink, and apparently smooth and level; but over a mile square of it was ringed and streaked and striped with a thousand branching streams of liquid and gorgeously brilliant fire! It looked like a colossal railroad map of the State of Massachusetts done in chain lightning on a midnight sky. Imagine it- imagine a coal-black sky shivered into a tangled network of angry fire!

Here and there were gleaming holes twenty feet in diameter, broken in dark crust, and in them the melted lava- the color a dazzling white just tinged with yellow- was boiling and surging furiously; and from these holes branched numberless bright torrents in many directions, like the "spokes" of a lady's fan, and kept a tolerably straight course for a while and then swept round in huge rainbow curves, or made

a long succession of sharp worm-fence angles, which looked precisely like the fiercest jagged lightning. These streams met other streams, and they mingled with and crossed and recrossed each other in every conceivable direction, like skate tracks on a popular skating ground. Sometimes streams twenty or thirty feet wide flowed from the holes to some distance without dividing- and through the opera-glasses we could see that they ran down small, steep hills and were genuine cataracts of fire, white at their source, but soon cooling and turning to the richest red, grained with alternate lines of black and gold. Every now and then masses of the dark crust broke away and floated slowly down these streams like rafts down a river. Occasionally the molten lava flowing under the superincumbent crust broke through- split a dazzling streak, from five hundred to a thousand feet long, like a sudden flash of lightning, and then acre after acre of the cold lava parted into fragments, turned up edgewise like cakes of ice when a great river breaks up, plunged downward and were swallowed in the crimson cauldron. Then the wide expanse of the "thaw" maintained a ruddy glow for a while, but shortly cooled and became black and level again. During a "thaw," every dismembered cake was marked by a glittering white border which was superbly shaded inwards by aurora borealis rays, which were a flaming yellow where they joined the white border, and from thence toward their points tapered into glowing crimson, then into a rich, pale carmine, and finally into a faint blush that held its own a moment and then dimmed and turned black. Some of the streams preferred to mingle together in a tangle of fantastic circles, and then they looked something like the confusion of ropes one sees on a ship's deck when she had just taken in sail and dropped anchor- provided one can imagine those ropes on fire.

Through the glasses, the little fountains scattered about looked very beautiful. They boiled, and coughed, and spluttered, and discharged sprays of stringy red fire- of about the consistency of mush, for instance- from ten to fifteen feet into the air, along with a shower of brilliant white sparks- a quaint and unnatural mingling of gout of blood and snowflakes!

We had circles and serpents and streaks of lightning all twined and wreathed and tied together, without a break throughout an area more than a mile square (that amount of ground was covered, though it was

*Open flame sates, classic  
Indian style curries & stir-fry*

*Located in the Banyan Court Mall  
on Alii Drive in Kailua-Kona*

*"SIBU CAFE serves the best and the  
most interesting, moderately priced food in  
Kailua-Kona"*

*Hawaii Handbook '92*



*75-5695 Alii Drive Kailua-Kona, HI 96740*

*Specializing in Indonesian and  
Southeast Asian Food Since 1982*

*GARDEN FRESH  
VEGETARIAN SPECIALTIES*

*AVAILABLE  
TAKE OUT OR EAT IN*

*Open 11:30-9 p.m.*

*(808) 329-1112*



not strictly "square"), and it was with a feeling of placid exultation that we reflected that many years had elapsed since any visitor had seen such a splendid display- since any visitor had seen anything more than the now snubbed and insignificant "North" and "South" lakes in action. We had been reading old files of Hawaiian newspapers and the "Record Book" at the Volcano House, and were posted.

I could see the North Lake lying out on the black floor away off in the outer edge of our panorama, and knitted to it by a web work of lava streams. In its individual capacity it looked very little more respectable than a schoolhouse on fire. True, it was about nine hundred feet long and two or three hundred wide, but then, under the present circumstances, it necessarily appeared rather insignificant, and besides it was so distant from us. We heard a week ago that the volcano was getting on a heavier spree than it had indulged in for many years, and I am glad we arrived just at the right moment to see it under full blast.

I forgot to say that the noise made by the bubbling lava is not great, heard as we heard it from our lofty perch. It makes three distinct sounds- a rushing, a hissing, and a coughing or puffing sound; and if you stand on the brink and close your eyes it is no trick at all to imagine that you are sweeping down a river on a large low-pressure steamer, and that you hear the hissing of the steam about her boilers, the puffing from her escape-pipes and the churning rush of the water abaft her wheels. The smell of sulphur is strong, but not unpleasant to a sinner.

#### THE PILLAR OF FIRE

We left the lookout house at ten o'clock in a half cooked condition, because of the heat from Pele's furnaces, and wrapping up in blankets (for the night was cold) returned to the hotel. After we got out in the dark we had another fine spectacle. A colossal column of cloud towered to a great height in the air immediately above the crater, and the outer swell of every one of its vast folds was dyed with a rich crimson luster, which was subdued to a pale rose tint in the depressions between. It glowed like a muffled torch and stretched upward to a dizzy height toward the zenith. I thought it just possible that its like had not been seen since the children of Israel wandered on their long march through the desert so many centuries ago over a path illuminated by the mysterious "pillar of fire." And I was sure that I now had a vivid conception of what the majestic "pillar of fire" was like, which almost amounted to a revelation.

photo by Michael Stewart



## PELE'S ILLUMINATING FIRES 1994



*The tropical garden setting of the Querencia Spa Tea Room complete with lilly pond, waterfall and Jacuzzi is located off Hwy. 160 in Honaunau, just minutes from Place of Refuge National Park and Painted Church.*

### OFFERING AN EVENING IN PARADISE

COUPLES/SINGLES

**(808) 328-2569**

Located in Honaunau-Kona  
mat. 2225 mat. 3053

#### The Night Bloomer

Jacuzzi, herbal facial, full body massage

#### The Double Lilly

Jacuzzi, herbal facial, full body massage, beverages and light pupus

#### Narcissus

Jacuzzi, herbal facial, full body massage, beverages, light pupus and a catered gourmet dinner in the Tea Room

Full Therapeutic Body Work, Kamaaina Rates, Insurances Accepted



Featuring...  
skin brushing,  
salt scrubs,  
herbal wraps,  
spirulina packs,  
hydrotherapy,  
licensed therapists  
ALSO AVAILABLE  
micro-current facials



# EAST HAWAII AND HISTORIC HILO

When you talk about the old Hawaii, at least the one that hasn't been touched as much today by the long arms of commercialization and development, you cannot help but to mention the East Coast on the Big Island. At the center of all this is Old town Hilo, seeing a revitalization of spirit thanks to the effort of the Downtown Hilo Organization is busy restoring and preserving the storefronts of this yesterday town. Aiding this effort are the wealth of new businesses occupying Hilo's old buildings.

One of the brightest spots has been the renovation and remodeling of the S. Hata Building by **Cafe Pesto**. This new restaurant has maintained the building's Renaissance Revival style of architecture and filled the air with smells of wood oven baked pizza and Pacific Rim Italian cuisine.

To add to this old Hawaii feeling are the daily Suisan Fish Market Auction and the Hilo Farmer's Market which held every Wednesday and Saturday in Downtown Hilo. One of the favorite fine dining spots in downtown Hilo is **Roussels**, open nightly and serving French Creole Cuisine. When the shutters and doors open every day at dusk the aromas of fine cuisine will lure you into this wonderful and intimate restaurant that is reminiscent of those eateries found in the New Orleans French Quarter.

Outside the town to the north are the Hawaii Tropical Botanical Garden, located along a 4 mile coastal scenic route, and Akaka Falls with its self guided pathways that take visitors over ravines and past several other waterfalls before ending up at the grand daddy of them all, Akaka.

When you are done sight seeing, lodging in Hilo is a snap and can accommodate every type of visitor. The magnificent and luxurious **Hale Kai Bed and Breakfast** on the bluff above the ocean overlooks Hilo's premier surf spot, Honolii. Expect nothing less than gourmet breakfasts and plenty of privacy. Hale Kai also has available a private cottage facing a pool and ocean. If you are looking to stay

within walking distance to downtown Hilo stop in at the affordable **Wild Ginger Inn** which features a jungle garden and stream setting overlooking Hilo Bay. The 1922 **Haili House Inn**, located across from the Lyman museum, is uniquely decorated in vintage Hawaiian eclectic decor and is one of the most popular lodging opportunities for visitors

seeking that feeling of old Hilo during their overnight stay. If a stay in the Hawaiian countryside is what you are seeking, head seven miles north out of town to Papaikou and check in at **Hale Lamalani** vacation rentals. Situated at 1,000 feet above sea level this country retreat offers plantation style lodging with all the serenity one could ever desire.

After leaving Hilo you don't want to miss the drive north to Waipio Valley which takes you over scenic gorges that were once crossed by cane hauling trains in the hey day of sugar cane production. The plummeting waterfalls and river mouths under the extensive bridge systems leading north up the Hilo Coast are definitely an awesome sight. Akaka Falls State Park and the village of Honamu can be reached by taking Hwy. 220 off of the main route. Hwy. 19 north. See the map. Once you reach the Park a short paved hike will trail you past a network of smaller waterfalls, lush and colorful tropical foliage to the plummeting Akaka Falls. Its accessibility and grand size make Akaka Falls a popular stop along this eastern coast.

One of the best ways to experience this region of the Big Island is to let **Blue Hawaiian Helicopters**, which flies out of Hilo airport, whisk you away into flight. Discover by air Hamakua's remote and beautiful waterfalls and valleys. The Blue Hawaiian Helicopter's new million dollar ASTAR jet helicopter is designed especially for touring. In addition to the smooth and comfortable flight, your tour experience is personally recorded on a complimentary video. Make sure you take along the coupon insert inside Coffee Times to receive a free color poster along with your flight.

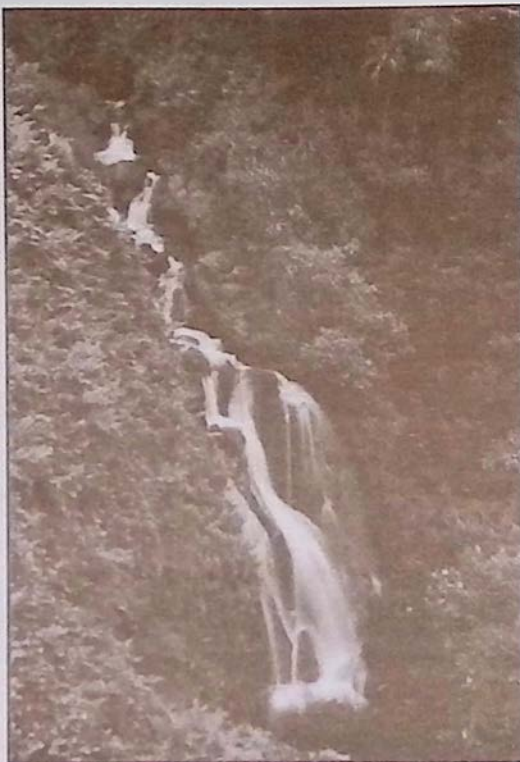
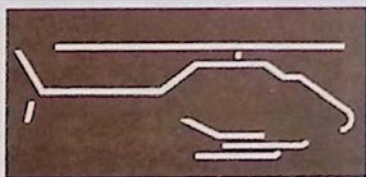


photo by Michael Stewart

## BLUE HAWAIIAN HELICOPTERS



FAA CERTIFIED AND INSPECTED AIR CARRIER

**EXPERIENCE HAWAII'S REMOTE BEAUTY  
UP CLOSE IN A NEW MILLION DOLLAR  
ASTAR JET HELICOPTER**

- ~ Complimentary VHS Video filmed live by our wide angle Heli-Cam™ system
- ~ Featuring Hawaii's newest and only air conditioned jet helicopter fleet
- ~ Family owned & operated - we take pride in providing the highest quality experience at the best price

### FLIGHT INFORMATION:

Big Island    **961-5600**  
Maui         **1-800-745-BLUE (2583)**

1940's Plantation  
style B & B  
with jungle  
garden &  
stream. A  
nonsmoking Inn.

*Wild  
Ginger  
Inn*

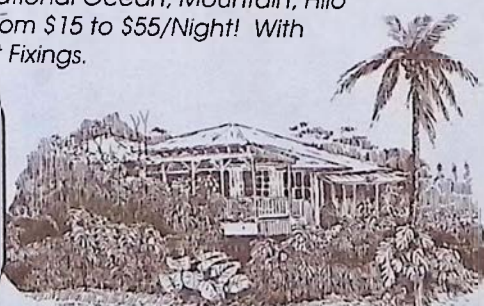
**\$39** private  
bath double  
with breakfast.  
100 Puueo St.  
Hilo, HI 96720  
Call 808-935-5556

**BED & BREAKFAST**

## Hale Lamalani (House of Heavenly Light)

*A Hawaiian Hideaway, Vacation Rental & Hostel  
Serenely situated with Inspirational Ocean, Mountain, Hilo  
Bay and Volcano Views from \$15 to \$55/Night! With  
Breakfast Fixings.*

*Located 5 miles north of  
Hilo above Botanical Gar-  
den and before Akaka  
Falls at the gateway to  
Hamakua.*



Phone/Fax: (808) 964-5401, Outside Hawaii 1-800-238-8BED  
R.R. 1 Box 206, Papaikou, HI 96781



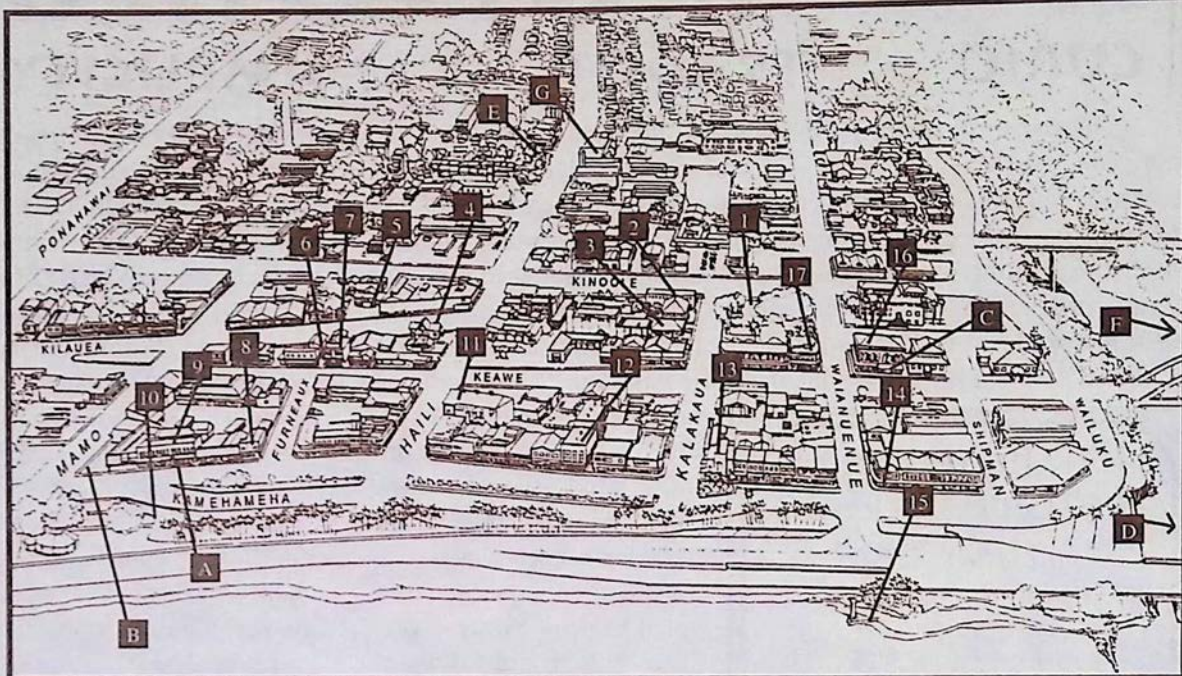
# HISTORIC HILO

This self-guided walking tour of historic Downtown Hilo will take about one hour if walked continuously. However, you are encouraged to go at your own pace and spend additional time discovering and exploring that which interests you.

The seventeen stops along the way will provide you with information about the town from 1870 to the present. The history of Hilo begins much earlier, however, with the arrival of the Polynesians in 1100 A.D. They eventually inhabited the shores of Hilo Bay, farmed their crops, fished and traded their goods with each other along the Wailuku River. Changes came to this life-style upon the arrival of missionaries who brought with them new ideas, education and Christianity.

Hilo became a stopping place for explorers curious about the active volcanoes, whaling ships and traders. By the 1900's a number of wharves had been constructed, the breakwater was begun and the railroad connected Hilo with other parts of the island. Hilo became the center of commerce. Two destructive tsunamis, in 1946 and 1960, caused a shift in the location of Hilo's government and commercial life.

Today, historic Downtown Hilo is alive and bustling with renewed energy. New and old businesses alike are meeting the challenge of revitalizing our city center while preserving the historic character which remains very special.



## Historic Structures

1. Kalakaua Park
2. Old Police Station
3. Hawaiian Telephone
4. Central Christian Church
5. Taishoji Soto Mission
6. Furneaux Lane
7. Ancient Order of Foresters Building
8. Furneaux Building

9. S. Hata Building
10. Bayfront
11. Palace Theatre
12. S.H. Kress Company Building
13. First Hawaiian Bank Building
14. Koehnen's Building
15. Landing Wharf
16. First Trust Building
17. Pacific Building

## Dining, Lodging and Other Sights...

- A. Cafe Pesto (*Pacific Rim Cuisine*)
- B. Hilo Farmer's Market
- C. Roussels (*French Creole Cuisine*)
- D. Hale Kai B&B
- E. Haili House Inn
- F. Wild Ginger Inn
- G. Lyman Museum



whether you choose...

WOOD-FIRED PIZZAS, FINE PASTAS  
OR  
SCRUMPTIOUS DESSERTS  
you will always get...

AN ADVENTURE IN TASTE

CAFE

*Pesto*

HILO BAY

OPEN FOR LUNCH & DINNER

Historic S. Hata Bldg., Hilo Bay, 969-6640

Live Hawaiian Music on Sundays, 6pm - Closing

## Haili House Inn

A Hawaiian Style Bed & Breakfast  
in Historic Downtown Hilo

**(808) 969-7378**

Relax in downtown Hilo's only B&B.  
Uniquely decorated in vintage Hawaiian eclectic decor.  
Located across from Hawaii's famous Lyman Museum

**Room rates begin at \$75/night**

## Hale Kai

Private Cottage also available

### Bed & Breakfast

Bjornen

★★★★

A 4 Star Bed & Breakfast on the bluff facing the ocean  
and overlooking Hilo Bay and Honolii surfing beach

VERY PRIVATE, POOL, JACUZZI, BREAKFAST,  
Private Baths, Well Decorated Rooms

111 Honolii Pali, Hilo, HI 96720

**(808) 935-6330 Fax 935-8439**

Double occupancy is \$80 and up

## ROUSSELS


FRENCH CREOLE CUISINE

"Pure Delight"

"Like Finding A Hidden Treasure"

"Ask Anyone About It"

"Hilo Side Means Roussels' Side"



Serving Dinner Nightly ~ Reservations: 935-5111  
60 Keawe Street ~ Historic Downtown Hilo



# HONOKAA

## CURIO

## TRADITION

## SIMPLICITY

## SINCERITY

For years the town of Honokaa sat idle, its home town theater empty, local storefronts ghostly quiet, and streets void of the bustle that once rumbled down Mamane Street during the boom days of the Hamakua Sugar Company, an industry that for the last century has been the life blood of the people in this region. Since the decreasing activity of sugar production over the years and the recent decision this year to halt sugar production all together, the local citizens of Honokaa have redirected their energy and begun one of Hawaii's most spirited move-

ments of rejuvenation. Local merchants have taken the initiative to reopen some of the closed doors in this picturesque town, including the local ice cream parlor, now called **Simply Natural**, outfitted with an old fashioned soda fountain and spinning stools. Other shops such as **Hale O'Kauwehi**, **Rainbow Nation** and the **Honokaa Trading Company**, as well as many curio shops overflow with Hawaiian memorabilia, local crafts, and wearable arts. Home town cooking flows out

of **Mateo's Pizza**, **Jolene's Kau Kau Korner**, and **Mamane Street Bakery** to add to the distinctly local flavor of what pizza parlor owner, Alex Mateo proudly calls, "The New Honokaa". Included in this new Honokaa is the town's farmers market that has become a weekly event in the downtown area in front of the Historic Botelho Building. The market is open each Saturday of the month.

As Hawaii's old theaters are becoming more and more popular the citizens of Honokaa celebrated the reopening of their own **People's Theater**. The doors have officially been opened and evening feature films can be caught every Friday and Saturday evening at Honokaa's historic theater.

Also located in Honokaa is the **Hawaiian Macadamia Nut Plantation** which is located down the hill from Kau Kau Korner. The plantation allows visitors the opportunity to view the inner workings of a macadamia nut factory. Factory creations fill the store shelves and will undoubtedly make your taste buds dance when you try them. Also featured is the plantation's own bake shop.

Departing every morning from the Hawaiian Macadamia Nut Plantation is the local tour group, **Hawaii Resort Transportation Company** that takes visitors into Waipio Valley for either horseback riding or a van tour of Hawaii's most dramatic sight.

Legend has it that it was in Waipio Valley, "the land of the falling water", the great King Kamehameha, as a young boy, received his leadership training and first learned to surf. Today, family ohanas, "houses", still dot the landscape which is separated by a river that leads

### It's the return of HISTORIC PEOPLE'S THEATER

Feature Films Now Playing  
every Friday & Saturday  
in Downtown Honokaa

**775-0000**

**HONOKAA  
FARMERS MARKET**  
Every Saturday  
in Downtown Honokaa

Located  
in Honokaa



Fresh Deli  
Sandwiches  
Old Fashion  
Ice Cream Sodas  
Soups of the Day  
Hilo Homemade  
Ice Cream  
Even Taro Ice  
Cream

See our coupon for a free  
old fashion ice cream soda

Open Daily  
**775-0119**

**Mateo's  
PIZZA**

Spaghetti  
Salads  
Veggie Pizza

Open Daily at 11 a.m.



**SPECIALS**  
2nd Medium  
\$7.00  
2nd Large  
\$9

HONOKAA  
**775-0944**

*rainbow*  
**NATION**

Specializing in  
Tahitian Quilts  
& Pareo's

**OPEN DAILY**

P.O. Box 949, Honokaa, HI 96727  
**(808) 775-7742**



Located in  
Honokaa

Open  
Mon - Sat  
10 am - 8 pm

Serving the Island's Favorite  
Local and American Dishes

What better place to share  
a little something with the  
community and travelers  
from afar.

dine in **775-9498** take out

**MAMANE  
STREET  
BAKERY**

• Cafe •



Fine Quality  
Baking,  
Quiches,  
Focaccias,  
Croissants,  
Desserts,  
Pastries,  
Cookies,  
Espresso,  
Cappuccino

Wholesale and Retail  
Located in  
Downtown Honokaa  
**(808) 775-9478**

*Hale*  
**O' Kauwehi**

Hawaiian Made  
Clothing, Arts & Crafts,  
Shop and Galleria

Across from Hasegawa Store

OPEN DAILY 10:00 AM TO 6:00 PM,  
Closed Wed. & Sun.

Fely Kaluhiokalani - owner

Ph. **(808) 775-0255**

**"NA PA' ALOHA"**

CARDS, GIFTS, SOUVENIERS

Vintage Sheet Music  
Shell Leis and Crafts



Collectibles  
Children's Books  
And Toys

HONOKAA TOWN  
(Across from Bank of Hawaii)

Open Weekdays and Sometimes Sundays  
8:30 AM - 4:00 PM  
(usually)

BILL & MARILOU IKAICA  
**775-9173**

The Treasure Shop  
GRAND OPENING  
IN JANUARY

Featuring...  
A little bit of this and a  
little bit of that!  
Antique & Craft  
Co-op.  
Open Daily  
Located next to Simply  
Natural in Honokaa



# HAMAKUA

SUGAR NUTS WATERFALLS TRANQUILITY

into the open sea. Local farmers and their families continue to make their way of life from farming taro and fishing off the sandy shores of this peaceful and remote valley floor. The only way down into the valley is by four wheel drive or by walking the literally breathtaking road down and up. An experienced and knowledgeable guide from Hawaii Resort Transportation Co. can make your trip an interesting as well as easy one.



EARLY WAIPIO VALLEY VILLAGE PRINT - engraving by Doms, circa 1785.

Outside of Waipio Valley and Honokaa town are other early and small settlements of the Hamakua region such as Paauilo, Kukuihaele and Laupahoehoe all filled with a rich and local culture that happily survives in this region of the Big Island.

New doors will continue to open for all of Hamakua as a period of change sweeps through the land with the fall of the sugar empire and the rise of small businesses in Honokaa.

## Honokaa-Hamakua Farmers and Cultural Market March Schedule

Market held every Saturday in front of the historic Botelho Building in downtown Honokaa

Call 775-9239 for more information

**March 5** Japanese Girl's Day Cultural Program  
(Dance, Exhibits, Flower Arrangements)

**March 12** Pre St. Patrick's Day Celebration  
(Wearing o' the Green til' the 17th)

**March 19** Beginning of Spring Program!!!

**March 26** Prince Kuhio Day  
(Hawaiian Cultural/Historical Program)  
Plus: Special "Local Grown Food Preparation" Exhibition

And Coming in May... **The first Outdoor Musical Concert**

**Waipi'o  
On Horseback**

**Waipi'o  
Van Tour**

**Mauna Kea  
Summit Tour**

## HAWAII RESORT TRANSPORTATION COMPANY

Experience the Beauty and Splendor  
of Waipio Valley by Horseback or Van



For Reservations or Information Call:

**(808) 775-7291**



## HAWAIIAN MACADAMIA NUT PLANTATION

Factory Tours...and more!

Visit our Factory and Store in Honokaa for delicious macadamia nut creations - from freshly-roasted nuts surrounded by creamy chocolate, to macadamia nuts and coconut combined in a fantastic butter brittle, to the best macadamia nut cookies from "our" bakery...mmmm good.

LOCATED IN HONOKAA TOWN, THE HEART OF HAMAKUA

775-7201



## March Bed & Breakfast Features Island of Hawaii

**WAIPIO WAYSIDE** Innkeeper: Jacqueline Horne. P.O. Box 840, Honokaa, HI 96727 (808) 775-0275, 1-800-833-8849. Rates: \$50-\$100.

Waipio Wayside B&B has been renovated and decorated to preserve the plantation style of living and reflects the gracious hospitality of a 1938 plantation manager's home. The Inn provides a peaceful and relaxing retreat to those who wish to unwind in a warm and comfortable atmosphere.

Guests are encouraged to stroll around the grounds enjoying beautiful tropical plants and trees. Relax on the large deck, swinging in double hammocks or sit in the gazebo listening to the birds while watching the ocean and sunset.

Gourmet food is a focus of the Inn. It is Rumored that Jacqueline your hostess opened the B&B instead of an eatery. Only the best Island fruit, finest teas from The Republic of Tea and amazing Hamakua Coast coffees are served.

You can choose from five bedrooms. The spacious master bedroom with full bath is located at the back of the house, offering a romantic, quiet, private space. The Library room located upstairs has a private bath that parti-



*Sketch of Hamakua's Waipio Wayside B&B*

tions to the room. It offers the best ocean views and skylights above the bed and shower and over 400 books. The Chinese room has a half a bath and furniture that comes from China and dates back to 1836. The Moon and Plantation rooms face the front of the property and share a bath. Both overlook the front lawns. Hapu ferns and fifty year old trees. Prices range from \$50.00 to \$100.00.

Your hostess Jacqueline Horne escaped from Silicon Valley six years ago, she happily shares her love and knowledge of the Big Island with her guests.

Call today to start experiencing the comfort and quality of old Hawaii. Locally 775-0275 or mainland 1-800-833-8849.

**HALE LAMALANI** Innkeepers: Elisabeth & Walter Patton, R.R. 1, Box 206, Papaikou, HI 96781 (808) 964-5401, 1-800-238-8BED. Rates: \$15-\$55/night/room, Notes: Foreign languages spoken.

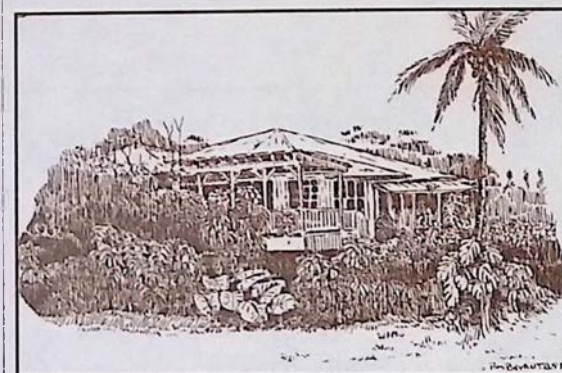
Hale Lamalani (House of Heavenly Light), a vacation rental, is a charming and tranquil two story "plantation style" home serenely situated ten minutes from Downton Hilo above the village of Papaikou at the 1000' elevation with inspirational sweeping views of the ocean, Hilo

Bay, glowing volcano & mountain top observatories. The house is on a lush botanical plant farm surrounded by taro, ginger fields and Macadamia nut orchards. The top floor of the house is for our vacation rental guests, consisting of three elegantly decorated and spacious bedrooms, bathroom with tub-shower, large living room with entertainment center, an enchanting covered porch and a modern kitchen (lunch & dinner use at no additional cost) where ono (good) continental breakfast fixings are provided. The apartment is available on short or long term basis.

Downstairs consists of our self-contained hotel accommodations at budget prices with full bath and kitchenette. Continental breakfast available.

The Pattons live in the Ohana (family) house in the rear of the property and are willing to share insider information about their island experience.

Hale Lamalani provides an affordable, peaceful, rural and elegant setting to experience the Aloha (love) spirit of the real Hawaiian "Paradise" found on the Big Island of Hawaii. Brochure available.



*Sketch of the Plantation House at  
Hale Lamalani Bed & Breakfast in Papaikou*

### HAWAIIAN HONEY HOUSE

Gourmet Honey  
Bee Removal & Supplies  
Honey Eaters 'R' Sweeter



Hamakua Trading Co.

Approved Septic Tanks 1,000  
& 1,250 gallons. We Deliver.

Phone/Fax: (808) 964-5401, Outside Hawaii 1-800-238-8BED  
R.R. 1 Box 206, Papaikou, HI 96781

## Hilo Farmer's Market

Every Wednesday and Saturday in Downtown Hilo at the corner of Kamehameha Avenue and Mamo Street from 6 a.m. to 2 p.m.

## And The New Kona Farmer's Market

Every Sunday at Lanihau Center in Kailua from 6 a.m. to 1 p.m.

Coffee Times magazine welcomes the work of  
Big Island Photographer Michael Stewart.

For professional photography work or photo tours of  
the Big Island call **MOLTEN IMAGES** at 326-7085.



Maui's Favorite Coffee House

444 Hana Highway

1-800-645-CUPS

## KONA COFFEE ARMAGNAC GINGERBREAD

unsweetened cocoa powder for dusting pan	1 cup	vegetable shortening, room temp.
1 cup	chopped pitted prunes	1 1/2 cup
1/2 cup	Armagnac or Cognac	1 cup
1 tblspn.	minced peeled fresh gingerroot	1/2 cup
3 cups	all purpose flour	4
2 tspns.	baking soda	1 tspn.
2 tspns.	cinnamon	1/2 cup
1 tspn.	ground gingerj	chopped crystallized ginger
1 tspn.	ground cloves	creme fraiche or sour cream for serving, sliced kumquats for garnish
1/8 tspn.	cayenne	
3/4 tspn.	salt	

Preheat oven to 350 degrees. Butter a 10-inch springform pan and dust with cocoa powder, knocking out excess.

In a skillet cook prunes, Argmagrac, and gingerroot over moderately high heat, stirring frequently, until almost all liquid is evaporated. Remove pan from heat.

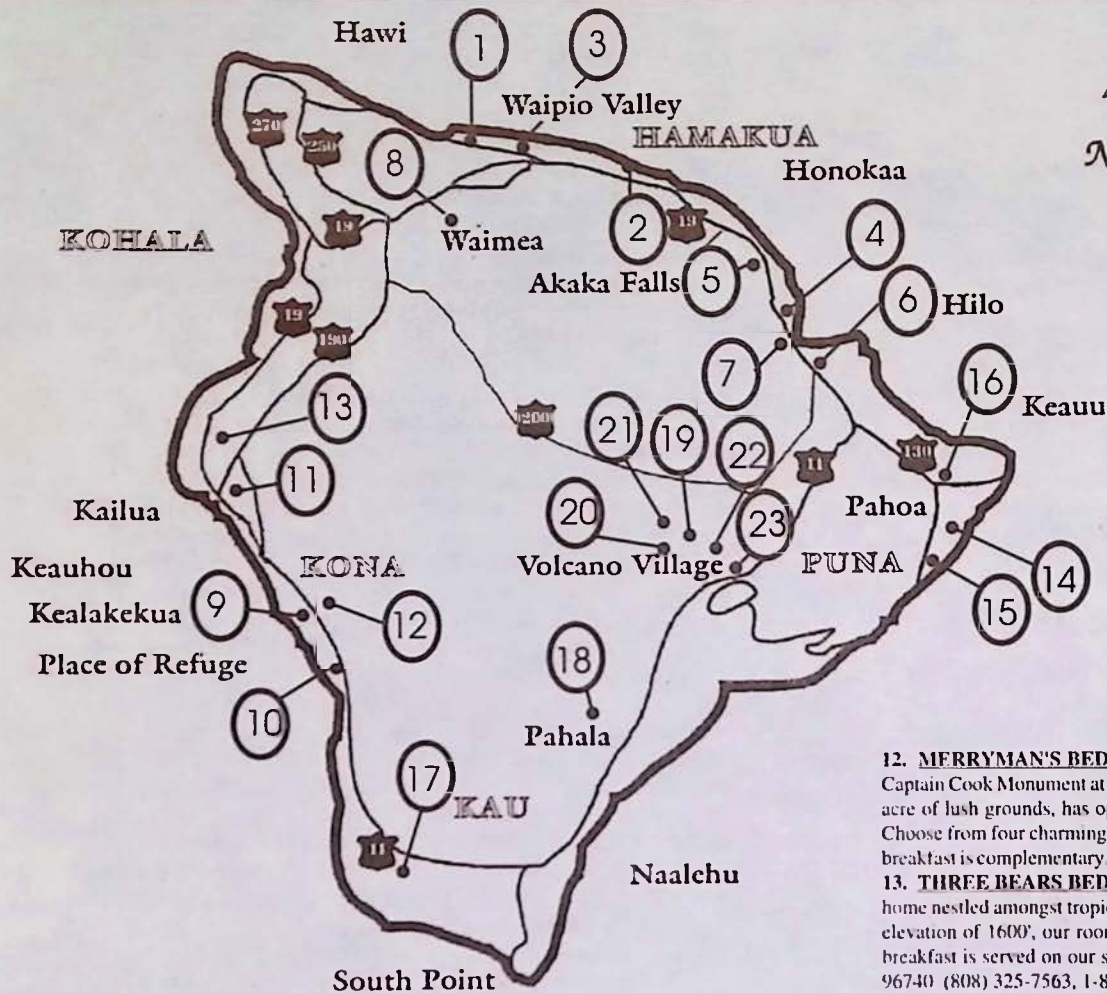
Into a bowl sift flour, baking soda, spices, and salt. In another bowl with an electric mixer cream shortening. Add sugar, beating, and beat mixture until light and fluffy. Add molasses in a stream, beating until combined well. Beat in coffee, flour mixture, eggs, and vanilla until batter is just combined. (It may separate at this point.) Reserve 1 tablespoon crystallized ginger and stir remainder into batter with prune mixture. Turn batter into prepared pan and sprinkle top with reserved ginger.

Bake gingerbread 1 hour 20 minutes, or until a tester comes out clean, and cool on a rack 1 hour. (The gingerbread will fall slightly in center.)

Serve gingerbread warm or at room temperature with creme fraiche and kumquats.



# Big Island Bed & Breakfasts



Denotes Hawaii Island Bed & Breakfast Association

## HAMAKUA REGION

1. **HALE KUKUI:** Overlooking Waipio Valley, each unit has a full bath, living room, kitchen and large lanai. P.O. Box 5023, Kukuihaele, HI 96727 (808) 775-7130
2. **SUDS ACRES:** Wheelchair Access, Macnut farm, indoor pool, cozy cottage on slopes of Mauna Kea, kitchen. P.O. Box 277, Paauilo, HI 96776 (808) 776-1611; 1-800-735-3262
3. **WAIPIO WAYSIDE:** Step back in time to a 1938 sugar plantation home. 5 unique bedrooms. P.O. Box 840, Honokaa, HI 96727. (808) 775-0275 1-800-833-8849

## HILO REGION

4. **HALE KAI:** 4 star B & B overlooking beautiful Honolii surfing beach and Hilo Bay. All private baths, cable TV, ocean front views, pool & jacuzzi, full breakfast-quiet area. Guests treated as family. Chosen among top 100 B & B's in USA and Canada. Rates: \$80 to \$98. Call or write Evonne or Paul 111 Honolii Pali, Hilo, HI 96720. (808) 935-6330 Fax (808) 935-8439
5. **HALE IALAMALANI:** (House of Heavenly Light) A vacation rental and hostel serenely situated 7.5 miles north of Hilo, 1,000 feet up on the Hamakua Coast w/mountain, ocean & bay views. Rates: \$15 to \$50. P.O. Box 430 Papaikou, HI 96781 (808) 964-5401 1-800-238-8BED (mainland).
6. **HALE OPANAWEA:** Guest cottage on a lush tropical 9 acre estate in Hilo. King bed, color cable TV, glass fireplace, petite kitchen, twin beds in living area. Continental breakfast provided. Accommodates 4. HCR-1 Box 1-A, Hilo, HI 96720 (808) 959-7432 Fax (808) 982-9091.
7. **WILD GINGER INN:** Nonsmoking Inn with jungle garden & stream room includes Hawaiian breakfast overlooking scenic Hilo Bay. Walk to old Hilo town, shops and restaurants. 100 Puueo St., Hilo, HI 96720. 1-800-882-1887 Mainland or (808) 935-5556 Hawaii

## KAMUELA KOHALA REGION

8. **KAMUELA'S MAUNA KEA VIEW:** Popular private suite w/rate below Kamuela motel room. Fireplace, equipped kitchen, deck panoramic view, telephone, TV. P.O. Box 6375 Kamuela, HI 96743 (808) 885-8425.

## KONA REGION

9. **B & B AT KEALAKEKUA BAY:** Private secluded peaceful estate, ocean/coastal views, private rooms/private baths. Also available, 2 bedroom 2 1/2 bath house. Walk to beach, snorkel, watch whales/dolphins. P.O. Box 1412, Kealahou, HI 96750 (808) 328-8150 1-800-328-8150.
10. **DA THIRD HOUSE:** Quiet, peaceful studio. Private entrance & lanai. Unobstructed ocean view. Minutes away from sandy beaches, best snorkeling. All amenities. P.O. Box 321, Honaunau, HI 96726. (808) 328-8410.
11. **HALE MALUHIA:** Minutes from Kailua Village and Airport yet secluded in the beautiful coffee country of Holualoa. Hawaiian style home with couple + breakfast lodging from \$50-\$75. 76-770 Hualalai Rd., Kailua-Kona, HI 96740 (808) 329-5773 (808) 329-1123 (808) 963-3300 Fax (808) 326-5487, 1-800-559-6627

12. **MERRYMAN'S BED & BREAKFAST:** Lovely tropical retreat just minutes away from the Captain Cook Monument at Kealahou Bay. This beautifully decorated cedar home is situated on an acre of lush grounds, has open beams, wood floors, antique furniture, and wonderful ocean views. Choose from four charming guest rooms with either an ocean or garden view. A delightful Hawaiian breakfast is complimentary. P.O. Box 474, Kealahou, HI 96750 (808) 323-2276, 1-800-545-4390.
13. **THREE BEARS BED & BREAKFAST:** Enjoy spectacular ocean views from our new cedar home nestled amongst tropical fruit trees & flowers. Located above the Kona Coast Beach Park at an elevation of 1600', our rooms feature private baths, tv, micro, refrigerator, coffeemaker. A hearty breakfast is served on our spacious lanai. Write Anne Stockel, 72-1001 Puukala, Kailua-Kona, HI 96740 (808) 325-7563, 1-800-765-0480.

## PUNA REGION

14. **CARSON'S KOPOHO COTTAGE:** Great snorkeling and unique lava tidal pools, fully equipped 2 bedroom oceanside cottage. P.O. Box 503, Volcano, HI 96785 (808) 967-7683; 1-800-845-LAVA.
15. **KALANI HONUA:** Conference and Retreat Center offering meals, lodging, spa facilities, pool, workshops, classes, cultural programs in a beautiful seaside setting for your personal retreat. RR 2, Box 4500, Pahoa, HI 96778 (808) 965-7828. See calendar listings for current program information.
16. **PEARL'S SHELL B&B:** In Beautiful Leiani Estates! Spacious rooms, private baths, garden setting, minutes from Lava Tree Park, warm pools, snorkeling, wonderful breakfast, 4 miles from Pahoa. P.O. Box 1324, Pahoa, HI 96778 (808) 965-7015

## SOUTH POINT REGION

17. **BOUGAINVILLEA BED & BREAKFAST:** Private bath & entrances, pool, spa, hike, bike, secrets of Hawaii. P.O. Box 6045, Ocean View, HI 96704 (808) 929-9221; Fax (808) 929-7089
18. **WOOD VALLEY:** Glimpse old Hawaii, secluded plantation home, pasture and garden, home grown breakfast, 100% Kona Coffee, unique outdoor tub and steambath, lomi lomi massage available, near volcano, black & green sand beaches. P.O. Box 37, Pahala, HI 96777. (808) 928-8212 1-800-854-6754.

## VOLCANO REGION

19. **HALE OHIA COTTAGES:** Private cottages on immaculate historic estate unmatched garden setting, fireplace, hot tub, private bath. Private suites start at \$60. P.O. Box 758 Volcano, HI 96785 (808) 967-7986 1-800-455-3803
20. **CHALET KILAUEA - THE INN AT VOLCANO:** Elegant, country living, Theme rooms, Tree House, Jacuzzi, TV, Fireplace, Library, Afternoon Tea and a 2-course gourmet breakfast. Inncomparable! Rates: \$75-\$175. P.O. Box 998, Volcano Village, HI 96785 (808) 967-7786, 1-800-937-7786 Off Island
21. **CARSON'S VOLCANO COTTAGE:** Secluded, perfect romantic getaway. Beautiful grounds, hot tub private baths. P.O. Box 503, Volcano, HI 96785 (808) 967-7683; 1-800-845-LAVA.
22. **LOKAHI LODGE:** Newest and lowest-priced luxury Bed & Breakfast in Volcano. A blend of modern convenience with country charm. Each carefully appointed guest room exudes a warm feeling of aloha, delicately and beautifully furnished for your pleasure. With comfort as a priority, your room has two extra-long double beds, a private bath and a private entrance. P.O. Box 7, Volcano, HI 96785 (808) 985-8647, 1-800-457-6924.
23. **MY ISLAND BED & BREAKFAST:** An 1886 historic missionary home at Kilauea Volcano surrounded by a 5 acre botanical estate. Rooms in the main 3-story house & garden apartments, caters to couples, singles & families. Full breakfast. Prices from \$35 to \$75. Special touring booklets. All the macnuts you can eat. Write: Gordon & Joann Morse, P.O. Box 100, Volcano, HI 96785 (808) 967-7216, (808) 967-7110



# March On The Big Island

## Sundays Every Month - JAZZ - LIVE IN HILO

The Skyliners play music from the Big Band era at D'Angoras in the Hilo Lagoon every Sunday afternoon from 3:30 to 6:30 p.m. 776-1611 for information.

### 1-31 BARBARA SCHAEFER PHOTO EXHIBIT ALL MONTH AT FIREHOUSE GALLERY IN WAIMEA

Inspirational photos of Hawaiian musicians including the Beamer Bros. and John Keawe will be on display all month at the gallery. Reception will be held March 5th from 3-5:00 p.m. Visitors are welcome! The gallery is open Tue., Thurs., Sat. 10:00 a.m. to 2:00 p.m. 885-7671

### 2 HOLY SMOKE CAFE

Featuring Ed Rosenthal, the Hawaiian Hemp Company celebrates the inauguration of the Holy Smoke Cafe, a Renaissance Masquerade Hemp Banquet. Minors must be accompanied by an adult or legal guardian. 6:30 p.m., Akebono Theatre, Pahoa. Tickets: \$12 in advance. Call 965-8600 for more information.

### 2 BED & BREAKFAST PUBLIC INFORMATION MEETING

Presented by the Big Island B&B Assoc. and Planning Dept. the discussion will focus on the process of opening a B&B in Hawaii. 6:30 p.m., King Kamehameha Ball Room, Kona Surf Hotel. 775-0275 for info.

### 4-6 CHEAPER BY THE DOZEN (See A.C.T. page 18)

### 4 THE HOBBIT

Presented by the Pahoa High School Drama Club. 7:30 p.m., Akebono Theater, Pahoa. Call 965-9943 for more info.

### 4,5 HO'O LEI LEI FESTIVAL NA'ALEHU TOWN

Organized by Hawaii's Volcano Circus, the Festival will feature contemporary and traditional Hawaiian games and music as well as arts and crafts. Na'alehu Town, 965-8756 for info.

### 6 BIG ISLAND EXPO

Featuring 40 booths and exhibits with Tai Chi and Yoga demonstrations. Hear lectures on Dolphin Adventures, Dowsing, Hemp Awareness, and Astrological Trends for 1994. Experience Lomi Lomi and Reiki. Guest speaker at 7:30 p.m. is Al Lagunero, Hawaiian prayer person. Expo hours: 1 p.m. to 9 p.m. at Hale Halawai Park, next to the Kona Inn Shopping Village, Kailua. \$5 entrance fee. Call 327-7232 or 326-1538 for more info.

### 5-31 "REFLECTIONS FROM THE MIND'S EYE"

A joint exhibit of fused dichroic glass by Patricia Van Asperen-Hume and contemporary, mixed media paintings and screen prints by Mary Lovein. An artists' reception for the public will be held at the gallery on Saturday, March 5, from 1-4, with both artists in attendance. A slide presentation by Van Asperen-Hume will be shown at 2:30. The reception is free, though park entrance fees apply. Volcano Art Center, Volcano, for more info. call 967-7511.

### 8 "LORRIN THURSTON: IN HIS OWN WORDS"

Lorrin Thurston played a controversial role in Hawaiian history. Playwright and director Peter Charlot has used Thurston's writings to create an autobiographical review of Thurston's life. This one-man play, starring Calvin Keet, examines Thurston's part in two overthrows that had significant impact on Hawai'i today. Peter Charlot has produced other creative works on Hawaiian history including a play about Thomas Jaggar. Kilauea Visitor Center, Hawaii Volcanoes National Park. 7:00 p.m., 967-7184.

### 9 IMPROVISATION WORKSHOP

With Jim Harmon at the Old Japanese Schoolhouse in Volcano Village. Workshop focuses on "thinking while doing" which is a skill everyone can use. Volcano Art Center, 967-8222

### 10-13 CHEAPER BY THE DOZEN (See A.C.T. page 18)

### 11 SPRING TREASURES GIFT AND CRAFT SALE

A fun filled day of shopping with some of the best crafters and vendors from different islands and even the mainland. Kona Surf Convention Center. 10:00 a.m. to 9:00 p.m. 325-5155

### 11 THE HOBBIT

Presented by the Pahoa High School Drama Club. 7:30 p.m., Akebono Theater, Pahoa. Call 965-9943 for more info.

### 11 BELLY DANCING AT BAMBOO (See group details page 21)

9:00 to 12:00 p.m., Bamboo Restaurant, Hawi Town, 889-5555

### 11,12 HO'O LEI LEI FESTIVAL PAHOA TOWN

Organized by Hawaii's Volcano Circus, the Festival will feature

12

contemporary and traditional Hawaiian games and music as well as arts and crafts. Pahoa Town, 965-8756 for info.

### CHILDREN'S BASIC CERAMICS

Budding potters, ages 7-12, will do impressions from nature, miniature sculptures, bowls, simple firing and glazing under Chiu Leong's instruction at his Volcano studio. 9-11:00 a.m. Call the Volcano Art Center at 967-8222 for more information.

12

### BEGINNING CERAMICS

Adults and teens learn to work with impressions, build sculptural forms, create bowls and tiles, and to glaze and fire from Chiu Leong at his Volcano studio. 12-3:00 p.m. Call the Volcano Art Center at 967-8222 for more information.

12,19

### PHOTOGRAPHY

Workshop will focus on color slide photography, with commercial photographer Sheri Siegel and will include slide show and talk by noted fine arts photographer Mary Walsh. A guided photo shoot through either Volcano Village or Hawaii Volcanoes National Park will be included in the workshop. 10:00 a.m. to 4:00 p.m. on the 12th, 10:00 a.m. to 3:00 p.m. on the 19th. Call the Volcano Art Center at 967-8222 for information.

15

### "HAWAII: PARADISE IN PERIL"

What can we do to work together to maintain Hawai'i's unique resources? The Audubon Society television special "Hawai'i: Paradise in Peril" examines our threatened environment and some possible remedies. Actor Richard Chamberlain hosts this program which explores current development issues as well as traditional values involving land use. A short music video, "You Can Run But You Cannot Hide" with Jerry Garcia will be included. Kilauea Visitor Center, Hawaii Volcanoes National Park, 7:00 p.m., 967-7184.

15,16

### BELLY DANCING AND MIDDLE EASTERN MUSIC

Lively and exotic music of the Middle East accompanied by beautiful and authentic belly dancing will be presented at the Holuakoa Cafe in Holualoa from 7:30 p.m. to 10 p.m. both nights. Limited tickets are available for \$10 and may be purchased by calling 322-CAFE or stopping in at the cafe. For further details turn to page 21.

18,19

### CHEAPER BY THE DOZEN (See A.C.T. page 18)

18-19

### ROSHOMON

Presented by the Hilo Community Players, based on stories by Ryunosuke Akutagawa and directed by Paul Mark Clark. 7:00 p.m. shows. Akebono Theater, Pahoa. Call 965-9943 for more information.

22

### "SLIP, SLIDING BUT NOT YET AWAY"

What's happening to Kilauea Volcano? Undermined since its magmatic conception, Kilauea continues its inexorable glide into the sea. In his role as geophysicist with the Hawaiian Volcano Observatory, Roger Denlinger analyzes problems involving the faults, folds and fissures caused by magma movement. This slide program will focus on the current status of Kilauea and present data explaining the mechanisms underlying the creeping, landslide motion of its south flank. Kilauea Visitor Center, Hawaii Volcanoes National Park, 7:00 p.m., 967-7184.

26

### STAMP OUT ART

For all ages with Ruth Levin at Studio 82. Participants use special inks, papers and magic powders; learn stamping techniques to make creative cards and gifts. 1:30 p.m. to 4:00 p.m. Call the Volcano Art Center at 967-8222 for more information.

26

### CARVE OUT ART

For teens and adults with Ruth Levin at Studio 82. Learn how to make rubber stamps in any design, as well as how to properly mount them. Participants will make three or more stamps to take home with them. 9:30 a.m. to 12:00 p.m. Call the Volcano Art Center at 967-8222 for more information.

26

### "A NIGHT OF ELEGANCE"

West Hawaii Dance Theatre will present it's first Gala Benefit Auction Party at the Kona Surf Nalu Terrace on Saturday, March 26, 1994. The evening will include entertainment, a live and silent auction, pupus, a no-host bar, and dancing after the auction. 6:00 p.m., tickets are \$15. Call 329-8876 for information.



expires  
3/31/94

## FREE SUNDAE

With the purchase of another Sundae

Waimea Center  
885-2166  
Kona Coast Shopping Center  
329-0151

# "TCBY"

The Country's Best Yogurt

see page  
14

expires  
3/31/94



Buy 5 Pounds  
of Kona Coffee  
Get 1 FREE

at our Kainaliu Roasting  
Room with this coupon

## FREE T-SHIRT

With Island Air Tour  
and this coupon

see page  
31

**326-2288**

expires  
3/31/94



**FREE WATER BOTTLE  
WITH HISTORIC KEALAKEKUA  
BAY BIKE ADVENTURE  
KONA BIKE TOURS**

expires  
3/31/94

**329-2294**



see page  
32



**FREE**

expires  
3/31/94

ICE CREAM CONE  
with purchase of deli  
sandwich and this coupon

see page  
26

Captain Dan McSweeney's Year Round

# Whalewatch

FREE 8x11  
Color Whale  
Photo

see page  
20

with direct booking  
**322-0028**

expires  
3/31/94

see page  
21

## Holuakoa Cafe

expires  
3/31/94

*Free cup of 100% Kona Coffee  
with this coupon*

322-CAFE located in Holualoa Town



## NAUTILUS II

SEMI SUBMERSIBLE

**\$5 Off** Underwater Ride  
with this coupon **326-2003**

see page  
3 expires  
3/31/94



# Kona Historical Society Museum

The Kona Historical Society, a non-profit organization, was founded in 1976 to collect, preserve and disseminate information about the history of the Kona districts on the island of Hawaii. It maintains a growing reference library and archive containing photographs, manuscripts, maps and oral histories as well as a small collection of artifacts.



Historical Photo Exhibits on display every month

## Museum Hours

9:00 a.m. - 3:00 p.m. Weekdays

Closed All Holidays

ADMISSION IS \$1.00 (members & children under 12 free)

Located on Highway 11, one-half mile south of rural Kealahou.

P.O. Box 398 Captain Cook, HI 96704

TELEPHONE (808) 323-3222



## PILOT A CESSNA AIRCRAFT AROUND THE BIG ISLAND

Under the supervision of a certified flight instructor

See Hawaii's:

**VOLCANOES~WATERFALLS~VALLEYS**

**FREE T-SHIRT WITH ISLAND AIR TOUR**

see our coupon

Cool, comfortable, spacious and smooth  
The best visibility and stability plus a full intercom system on board for a truly custom trip.

Aircraft Tours, Rentals, Charters and  
Aerial Photography also available

**326-2288**



Call

**329-4727**

**OR YOUR FAVORITE PHOTO**

74-5590 Eho St.  
Kailua-Kona,  
96740

Your Coffee Plantation Portrait Baked Into a  
Personal Coffee Mug, Button, or Simple Print.  
A Great Gift for Someone Else!

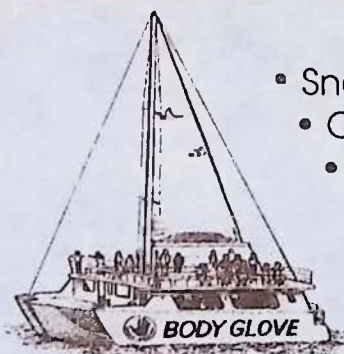
Located at Kona Inn  
Shopping Village

DISHWASHERABLE MICROWAVEABLE



# BODY GLOVE

KONA'S PREMIUM SNORKEL CRUISE  
**SNORKEL • SCUBA • SNUBA**



- Snorkel Gear & Instruction
- Continental Breakfast
- Deli Buffet Lunch
- Flotation Water Toys
- Full Service Bar (no host)
- Water Slide

**326-7122**

**\$20 OFF  
Adult Fare**

\$20.00 Off per adult couple or  
\$10.00 off any single adult. Only  
\$44.00 per person with this  
coupon.

**\$5 OFF  
Under Water  
Video**

Capture your vacation with a  
custom Body Glove Video. This  
coupon entitles you to \$5.00 Off  
a Kona Down Under Production.

See our coupon



# KONA BIKE TOURS

## GUIDED BIKE TOURS OF HISTORIC KEALAKEKUA BAY

**Stops at:**  
**Painted Church,**  
**Kona Coffee Mill,**  
**Kealahou Bay,**  
**Place of Refuge**  
**Plus:**  
**Snorkeling**  
**and Picnic Lunch**



## MOUNTAIN BIKE RENTALS

**FREE  
WATER  
BOTTLE**  
 see our coupon

We carry the full line of  
**IRONMAN**  
 merchandise  
 Plus all of your running,  
 swimming & biking needs

Located in the Kona Inn Shopping Village

**329-2294**

# Waipio Wayside

## Bed & Breakfast Inn

(10 minutes from Waipio Valley)



1938 sugar plantation managers home that provides a peaceful and relaxing retreat to those who wish to unwind in a warm and comfortable atmosphere. Choose from five unique bedrooms ranging from \$50 to \$100. Enjoy a hearty breakfast in a traditional Bed and Breakfast.

Call today to start experiencing the comfort and quality of old Hawaii. See our listing in B&B section.

**775-0275 or 1-800-833-8849**

# Restaurant La Bourgogne

CUISINE FRANCAISE

## MARCH PRIX FIXE MENU

Lobster Salad  
 with Roasted Shallot  
 & Sherry Dressing  
 Justin Vineyards Chardonnay  
 Lapin aux Raisins et Pistachios  
 (Rabbit with Grapes and Pistachios)  
 Vegetable Ratatouille  
 Potatoes Rissolle  
 Justin Cabernet Sauvignon  
 Single Layer Chocolate Cake  
 100% Pure Kona Coffee  
**\$38 Per Person**

Served in addition to our regular  
 menu throughout the month

"...the classic French  
 cuisine at this wonder-  
 ful, intimate place may  
 be the best in Kona."

-The Zagat Restaurant Survey

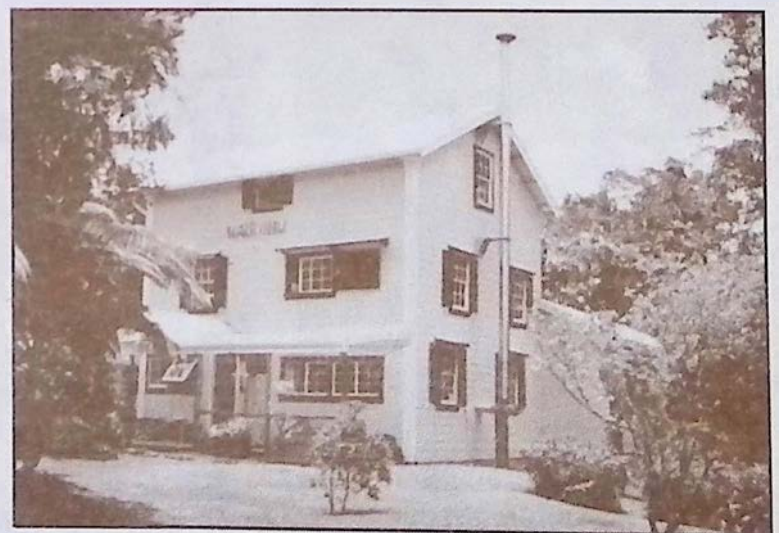


Monday - Saturday 5:30 to 10:00 p.m. 3 Miles South  
 of Kailua-Kona Highway 11

*Reservations Recommended*  
 we are a non-smoking restaurant

**329-6711**

# MY ISLAND BED & BREAKFAST AT VOLCANO



Featuring...

- ~All the macadamia nuts you can eat~
- ~A variety of rooms at a range of prices~
- ~We serve a "stuff-yourself" breakfast~
- ~Located on a 5-acre estate full of flower gardens~
- ~Personalized touring information for East Hawaii~
- ~Come spend time in our 108-year old historic house~

**967-7216 OR 967-7110**

(See our listing in B&B section)