



Coffee Times

October 1993

Edition 7

by Up Country Productions

Monthly display advertising for stuff to do, places to stay, what to see and where to eat on THE BIG ISLAND of Hawaii, and...whatever else we can muster up for you each month.

Island Events Calendar

1993

Big Island B&B's

Kona Coffee

Adventures By

Cultural Festival

Air, Land and Sea

pages 10 & 11



Reproduction by Reverend Thomas Banks from a drawing done by William Ellis, a carpenter with Captain Cook, circa 1788

HAWAII ISLAND INDEX OF EVERYTHING

ART GALLERIES

Ackerman Galleries	889-5971	P. 5
Cook's Discoveries	885-3633	P. 23
Hale O' Kauwehi	775-0255	P. 16
Up Country Connection Art & Antiques	885-0623	P. 23
Volcano Art Center	967-8222	P. 12
White Garden Gallery	322-2256	P. 19

ARTISTS

Gary Ackerman (Ackerman Galleries)	889-5971	P. 5
Shelly Maudsley White	322-2256	P. 19

COFFEE FARMS

Old Hawaiian Coffee	328-2277	P. 3
---------------------	----------	------

COFFEE RETAILERS AND CAFES

Bad Ass Coffee Co.	1-800-338-7139	P. 9
Holuakoa Cafe	322-CAFE	P. 19
Huna O hana	965-9661	P. 13
Island Lava Java	327-2161	P. 28
Waimea Coffee Co.	885-4472	P. 23
Big T's Kona Coffee	326-2170	P. 8

DINING

Aloha Cafe (International, Mexican...)	322-3383	P. 20
Bianellis (Gourmet Pizza & Pasta)	326-4800	P. 6
Big Island Steak House (Steak House)	885-8805	P. 9
Cafe Pesto (Pacific Rim Italian)	969-6640, 882-1061	P. 17
Don's Deli (International)	889-5822	P. 5
Fisherman's Landing & Captain's Deck (Continental)	326-2555	P. 24
Kona Amigos (Mexican)	326-2840	P. 28
Luquin's Mexican Restaurant (Mexican)	965-9990	P. 13
Nuang Mai (Thai Kitchen)	965-8186	P. 13
Sibu Cafe (Indonesian & Southeast Asian)	329-1112	P. 22
The Gallery Restaurant (Continental)	885-7777	P. 4
Tres Hombres (Mexican)	882-1031	P. 4
Wakefield Gardens (Home Cooked)	328-9930	P. 8
Yo Pizza (Pizza)	965-7033	P. 13

AIR ADVENTURES

Koa Air Service (Helicopter, Plane Tours, Instruction)	326-2288	P. 27
--	----------	-------

LAND ADVENTURES

Chris' Bike Adventures (Bike Tours)	326-4600	P. 4
Kona Bike Tours (Mountain Biking, bike equipment)	329-2294	P. 28
Patsy Ivy Tours (Guided Tours of Puna)	966-4946	P. 13

LODGING

Bamboo House	965-9340	P. 13
Big Island Bed & Breakfasts		P. 25
Hale Kai B&B	935-6330	P. 17
Hale Maluhia B&B	329-1123	P. 19
The Village Inn	965-6444	P. 13
Wild Ginger Inn	935-5556	P. 17
Chalet Kilauea	967-7786	P. 12

MUSEUMS

Kona Historical Society	323-3222	P. 27
-------------------------	----------	-------

OCEAN ADVENTURES

Atlantis Submarine (Submarine Rides)	329-6626	P. 28
Body Glove Snorkeling Cruise (Snorkeling Cruise)	326-7122	P. 27
East Hawaii Divers (Scuba & Snorkel Tours)	965-7840	P. 13
Dan McSweeney Whale Watch (Whale Watching Cruise)	322-0028	P. 21
Nautilus Submarine Experience (Underwater Reef Tours)	326-2003	P. 3

SPECIALTY SHOPS

Clothing	As Hawi Turns	889-5023	P. 5
	Cannabis Hemp Fashions	965-8600	P. 13
Dance Studios	Dameron's Academy of Dance	322-8119	P. 20
General Stores	Aloha Village Store	322-9941	P. 20
	Hamakua Trading Company	964-5401	P. 16
	Naalehu Fruit Stand	929-9009	P. 7
	Pahoa Natural Groceries	965-8322	P. 13
	The Volcano Store	967-7210	P. 12
	Waimea General Store	885-4479	P. 23
Ice Cream	Tropical Dreams	889-0505	P. 5
Gardens	Akatsuka Orchid Garden	967-8234	P. 12
	Hawaii Tropical Botanical Gardens	964-5233	P. 16
Photo Developing	One Hour Moto Photo	329-2080	P. 3
Publications	Ka'u Landing	929-8130	P. 24
Real Estate	A Real Estate Concern	322-3677	P. 3

THEATRES

Akebono Theatre	(see calendar)	965-9943	P. 13
Aloha Performing Arts Center	(see calendar)	322-9924	P. 20
Kahilu Theatre	(see calendar)	885-6017	P. 27
Kilauea Theatre	(see calendar)	967-8222	P. 26
New World Square Theatre		329-4488	P. 8

COFFEE TIMES

Circulating 15,000 copies monthly
On the Big Island and 300 mainland locations
TO RESERVE ADVERTISING SPACE

Call or write the publisher,

LES DRENT at:

(808) 326-7637

P.O. BOX 1092

Captain Cook, Hawaii 96704

For Mainland Subscriptions:

Send \$25.00 for 12 months
Add \$5.00 if outside of USA

Mail to:

Up Country Productions

P.O. Box 1092

Captain Cook, HI 96704

Read This ↓

UP COUNTRY is not the manufacturer, or an agent of the manufacturer, for the goods and services being advertised herein and therefore makes NO EXPRESS OR IMPLIED WARRANTY OF ANY KIND WITH RESPECT TO THOSE GOODS AND SERVICES. The publisher will not be responsible for typographical or printing errors, but will reprint without charge that portion of the ad in which the error occurs. Publisher accepts no responsibility for errors resulting from telephone insertions.

Illustrations used herein are for design purposes only and do not necessarily depict the actual items offered by the advertisers.

This publication may not be reproduced in whole or in part without the prior written consent of UP COUNTRY and reserves the right to edit, revise or refuse any advertisement.

Old Hawaiian Coffee

1870's Trees

Specializing only in 100% pure estate grown Kona Coffee

HIGH QUALITY MODERN COFFEE PULPING MILL

COME TOUR OUR HISTORIC COFFEE FARM

Take a **FREE** tour of our farm for the real story of how coffee is produced. We are located off Highway 11 in Honaunau, one tenth of a mile south of mile marker 105, just after the mailbox on the mauka side of the road.

"We'll take you from the tree to the roast"

Misha Sperka (farmer/owner)

84-5042 A Mamalahoa Hwy., Captain Cook, HI 96704

(808) 328-2277



KEEP KONA COUNTRY
BUY A FARM!!!

ARNOLD RABIN (R) (GRI)
PRINCIPAL BROKER

A REAL ESTATE CONCERN-HAWAII
(808) 322-3677 / FAX: (808) 322-6119
P.O. BOX 766, CAPT. COOK, HI 96704 / (RES) 328-2386

SERVING THE KONA COFFEE
COMMUNITY SINCE 1980

NAUTILUS II

SEMI SUBMERSIBLE
HAWAII'S SUBMARINE EXPERIENCE



\$5 off
with this coupon
offer expires 10/31/93

INTRODUCTORY PRICES	
ADULTS	\$34.95
CHILDREN	\$19.95

Enjoy Both Topside and Underwater Viewing in our Air-Conditioned, 58-Foot, 34-Passenger Coast Guard Approved Vessel. No Age Limit, Day and Night Cruises, Special Group Charters Available,

For reservations call or stop in at our shop. We are located across from the pier in Kailua-Kona

326-2003

ONE HOUR MOTOPHOTO

FREE 1 Pot Pack of 100% Kona Coffee

With every roll of color film processed with this coupon

329-2080 Kona Inn 322-8091 Keauhou

Located at: Kona Inn Shopping Village (1 hour) on Alii Drive & at the Keauhou Shopping Village (overnight service)



CHRIS' BIKE ADVENTURES



MAUI · HAWAII · MOLOKAI

Your Choice of 2 Biking Adventures: The Kohala Mountain Adventure

This predominantly downhill bike trip, suited to all levels of riders boasts panoramic views of Mauna Kea, Mauna Loa and Maui's Haleakala while you pass through lush pasture lands and quaint North Kohala villages. The trip finishes at a remote beach for lunch after stopping for a view of majestic Pololu Valley.

The Mauna Loa Challenge

This 54 mile 12 hour adventure descends 11,000 ft. to sea level through rugged volcanic terrain, ranchland and dramatic coastal areas. Includes Kohala Mountain Adventure with breakfast and lunch included.

FREE T-SHIRT WITH THIS AD & DIRECT BOOKING

For Big Island Reservations

326-4600

TRES HOMBRES



BEACH GRILL

Fine Mexican Dining
&

Surfing Museum

Open 11:30 to 9 Sun to Thur
11:30 to 10 Fri & Sat

Lounge open until midnight

Located at the Kaiwihae
Shopping Center

882-1031

Stay for Coffee.

Cappuccino and conversation are both free with any dinner entrée at The Gallery. Just bring this ad. And discover our fine menu of great dishes impeccably served in comfortable ambiance...at surprisingly reasonable prices. Dinner 6:30-9:30 p.m.

the GALLERY
AT THE RACQUET CLUB

Call for reservations.

885-7777

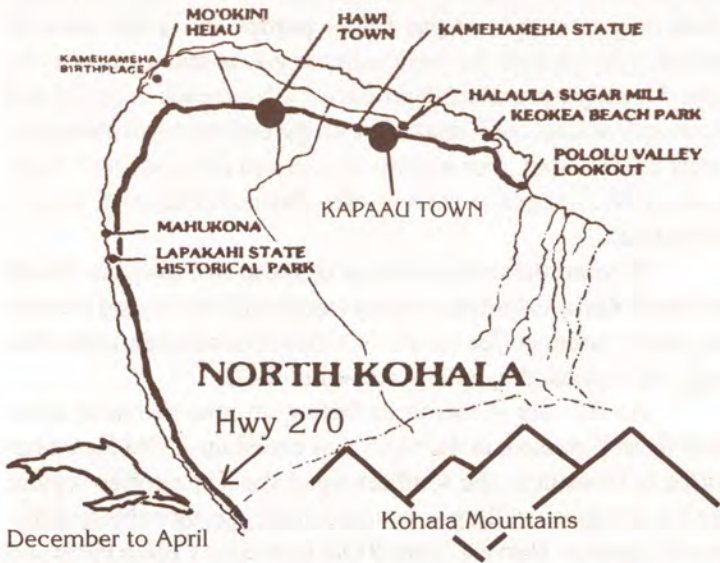
AT MAUNA LANI RESORT

Kona Coffee Cookies

1	egg well beaten
1/2 cup	oil
1/4 cup	strong brewed 100% Kona Coffee
1 tspn.	vanilla extract
3/4 cup	sugar
2 cups	sifted flour
2 tspns.	baking powder
1/2 tspn.	salt

In a medium-size mixing bowl, beat the egg, oil, brewed Kona coffee and vanilla extract. Gradually add sugar. Stir in the dry ingredients and mix thoroughly. Drop by teaspoonsfuls onto ungreased cookie sheets and flatten with bottom of a glass covered with wet cloth. Bake at 400 degrees for 10 minutes. Cool 1 minute and transfer to cookie rack.

Recipe by *Hatsue Kinro*,
1972 Kona Coffee Cultural Festival Recipe Contest



Following highway 270 north visitors will encounter a landscape filled with historical landmarks that include the original statue of King Kamehameha, Kalahikiola Church, and Mo'okini Heiau which is regarded as the oldest pre-Western contact temple of worship. King Kamehameha was believed to be born at Mo'okini in 1758.

Also to be found are the remnants of a once thriving sugar plantation industry of the 1880's which is still visible in the many old storefronts of Hawi & Kapaau towns. These towns are now preserved by a new generation of Hawaii business which have their own distinct local offerings. In Hawi Town, a fun romantic & wild boutique called As Hawi Turns awaits those visitors seeking new clothing for the Hawaiian lifestyle and is not for the weak at the knees. The shop also carries handmade crafts by Big Island artists. Just up the road a piece, smack dab in the middle of Kapaau Town is Hawaii's own local ice cream factory, Tropical Dreams. The owners, Lou and Deby Bleier, feature their fresh fruit sorbets and homemade ice creams and their original macadamia nut and honey butters in a parlor that fills

one storefront in old Kapaau town. **FREE TASTES!!!** Across the street from the ice cream factory and also across from the King Kamehameha statue artist Gary Ackerman reflects on the landscape around him through his impressionistic style of painted art on display in Ackerman galleries. Gary's combination of a free liquid style on canvas and varied techniques of painting allows him to successfully blend the colors of the natural environment. Both galleries also feature the works of other local artists.

If the drive up the Kohala coast and gallery hopping has got your appetite going at this point maybe its time to visit Don's Deli across from the King Kamehameha statue. Let Don prepare you a sandwich from his large selection of cold cuts and cheeses or try one of his homemade vegetarian quiches or pastas. Don's new terrace is a great place to relax before heading north to Pololu Valley.

When you're done in town country road 270 N. will lead you through North Kohala's fertile pasture lands, dense forests, and ultimately to Pololu Valley which offers one of the best scenic view lookouts on the island. While driving along the coastline of North Kohala remember that if the skies are clear, you may be able to catch a view of the island of Maui looming from the other side of the Alenuihaha channel.

Come and enjoy this peaceful region of Hawaii. You will see and taste the wonders it has in store for you.

As Hawi Turns

*Clothing for the
Hawaiian Lifestyle,
Local Crafts*

Located in downtown Hawi
next to Kohala Health Food
and Pumehana Flowers
889-5023



Ackerman GALLERIES

ORIGINAL WORKS OF
ISLAND ARTISTS
ORIENTAL ANTIQUES
PRIMITIVE ARTIFACTS AND GIFTS

Open daily 9:30 to 5:30 p.m.
Both locations in Kapaau town Hwy. 270 North
(808) 889-5971

DON'S Family DELI

10% OFF
all lunch orders over \$10

sandwiches, lasagnes, quiches,
pastas and chicken enchiladas

CAPPUCCINO & ICE CREAM

CAFE OPEN daily
MON-FRI 8-6 SAT/SUN 8-5
(808) 889-5822



Tropical Dreams™

Ice Cream Factory



&
Cafe



featuring . . .

Hawaii's famous homemade ice creams and fresh fruit sorbets..

also serving "Hebrew National Kosher Hot Dogs"
& fresh baked pesto or marinera (pizza bread) focaccio
illy Brand pure Italian espresso & cappuccino

OPEN DAILY Mon-Sat 11-5 Sun 1-5
Located in Downtown Kapaau on Hwy. 270 North
889-0505 P.O. Box 557 Kapaau, HI 96755

DIPPING STORES FEATURING *Tropical Dreams* ICE CREAM & FRESH FRUIT SORBETS:

- "Waipio Art Works" Kukuiahae
- "Hawaii Mac Nut Plantation" Monokaa
- "Tropical Dreams" Kawaihae
- "Sugar & Spice" Waimea
- "El Gecko" Waikoloa
- "Island Lava Java" Kailua-Kona
- "Kealakekua Antiques & Art" Kealakekua

Harvest Time at Old Hawaiian Coffee

Late summer afternoons in up slope Kona usually brings rain and today is certainly no exception. From Holualoa to Honaunau the slopes of Mt. Hualalai and Mauna Loa lay draped in clouds of grey and black while off to the west the orange sun hovers over the Pacific's horizon. The boats in Kailua Bay, some 1,500 feet below look like toys faintly seen amidst the hot volcanic haze of the October afternoon. All along old Mamalahoa Highway and Highway 11 green and cobalt black cliffs flank the sides of the road and the scent of wild ginger and other tropical foliage is highlighted in the dampness of the day. In the yards of many homes between Holualoa and Honaunau are coffee trees, many planted before the turn of the century, all ripening in spectacular fashion with branches of cherries glowing reds and yellows, some even hinting shades of purple. Outside the bustling street between Kainaliu and Captain Cook redwood coffee shacks set back in the tall grasses around twisted barb wire fences sit faded from years of sun and the daily rains in this land of endless summer. Besides the generations of old farms and properties along the roadways north and south of this commercial zone exist the mom and pop stores. These stores were first opened by Japanese families, who took up residence in this region after coming to Hawaii around the turn of the century as contracted laborers to work primarily in the booming sugar cane industry, many owned and controlled by Hawaii's infa-

mous Great Five. At these stores are small U.S. Postal drops, for letters only, a couple of gas filling pumps and a few isles of shelves stocked with the basic canned goods and groceries, no frills. Usually a box of fresh produce sits by a reach in cooler and of course, packages of Kona coffee on the counter top fronting the family coffee label. For twenty or so miles from north to south these are the images seen by those who travel through Kona's coffee belt.

Beyond the main roadway of these two districts, North and South Kona, to both the mauka (mountain) and makai (ocean) side are the larger coffee estates of substantial acreage, and mills, many still operated by independent families.

As the rain seems to be letting up now the short drive south from Holualoa, in the north, has ended up at Old Hawaiian Coffee in Honaunau, the southern tip of the Kona coffee region. The late afternoon milling is soon to commence, the subject of this month's feature. Harvest Time at Old Hawaiian Coffee Farm and Mill



Looking north over the Kona Coffee Belt from Honaunau to Kealahou, circa 1930, courtesy of Kona Historical Society Archives

Nightly Fresh Pasta
Specials

PIZZAS, CALZONES,
DINNERS, SALADS,
SANDWICHES,
FRESH PASTA

HUGE SELECTION OF
BEER AND WINE

More than you could
ever imagine!

Bianvelli's
Gourmet Pizzeria
AND PASTA!!!

WE
DELIVER

TWO LOCATIONS

Pines Plaza

326-4800

Kona Coast

Shopping Center

329-1484



At only 60 cents a pound for coffee cherry, everyone has to pick, including the boss!

The majority of the coffee in Kona is harvested between the months of October thru December and many of the small mills that process the raw coffee cherries swing into full operation during this time. Old Hawaiian Coffee Farm and Mill owned and operated by Misha Sperka and his family was built in the late 1800's and is the only mill in Kona where island guests are welcome to stop up and view, first hand, the operations

by household heating oil. The preferred method is sun drying the beans which takes longer but is believed to retain more of the coffee's flavor. Many of Kona's older farms are built with "false pitched roofs" which actually slide back on rollers to receive the sun light and close up to protect the drying coffee from the afternoon rain showers that frequent this region. The drying drums are able to dry the beans in considerably less time, six to twelve hours, and are the preferred method of mills operating at larger and more commercial capacities. When all is said and done only twenty percent of the original weight of the cherry remains in what is called the parchment stage.

Since pure Kona coffee is a prized possession in the world marketplace every step is taken by many of the farms to yield the best product which may not only include sun drying the beans but also using chlorine free water in the soaking process and organic fertilizers. Using chlorine free water allows the coffee beans to retain more of their oils, the true essence of good coffee. Using organic fertilizers in the fields is believed to greatly add to the natural cupping characteristics of this gourmet coffee as well.

During the sun drying period it is essential the beans be shifted or raked every so often to assure thorough drying. Once the beans have been dried a thin membrane exists, almost like a

continued on page 22

of a working coffee farm and mill. What I missed by arriving this late in the afternoon was the picking of the coffee that probably started close to sun rise. Much of the coffee to be processed that evening however, arrives from neighboring farms in one hundred pound coffee sacks in the beds of old pick up trucks. At a fairly standard cost of seven cents per pound the cherry will be milled at Old Hawaiian.

An average picker on these farms can pick between one hundred to three hundred pounds a day depending on the season and is usually paid around twenty five to thirty five cents per cherry pound for his effort.

When the coffee does arrive it is always inspected and weighed before being sent down the chute into the pulper, a metal cylinder with stripping knobs that squeezes and removes the husks from the coffee beans. The beans and husks are then soaked in giant holding tanks of water for a period of about 8 to 18 hours. After soaking the beans and husks the pulp is separated and sent out of the mill on to a waiting truck that will take it back into the fields for use as fertilizer. The beans are then carted out onto wooden decks to be sun dried or placed into drying drums powered usually



The Old Hawaiian Mill built around the late 1800's can still process up to one million pounds of coffee cherry every year.



Naalehu Fruit Stand

"A stop in good taste"

Open daily
at 9 am
on Hwy 11
Its the perfect rest
stop on the way to
Volcano!

This general store-restaurant takes pride in homemade goodness. Choose from numerous tropical breads like pineapple-coconut, to saucer-sized cookies like mac nut butter. The macadamia nut pie is a prize winner. Sandwiches come on homemade bread and the pizza boasts all made-from scratch ingredients. Wet your whistle with the fresh-pressed pineapple juice. Sundry and souvenir items available. Located on Hwy. 11 in Naalehu. Free souvenir with purchase!

P.O. Box 31 Naalehu, HI
96772 (808) 929-9009

WIN 10 FREE POUNDS OF 100% PURE PEABERRY KONA COFFEE

Early Hawaii Puzzle

To be eligible to win the 10 pounds of free Peaberry Kona Coffee complete the puzzle and send your 29 answers to: Up Country Productions, P.O., Box 1092, Captain Cook, HI 96704. We will draw a winner from those of you who can answer each question correctly and announce that winner in the December issue of Coffee Times. So hurry and find yourself a knowledgeable local or make your way down to the Place of Refuge! The answers are all in this word search in either English or Hawaiian. Good Luck!

q p o i y u e i i l a e i l a r
 u t w i k o o c n i a t p a c l
 m a h i o l e r u d b k y e l k
 a h e m a h e m a k s p a q z l
 a k a p a k m v e h u d s l q p
 r b z p j d a m p u a l i k u h
 p f s a p o l y n e s i a n s e
 k u a y s w l u g k s l o t k u
 d t v m p g u a e o u t v a a a
 h s k a o h u n j a s m p f h o
 w v g r o v g u l l d u o p u a
 p l t q k o n a n e l k h a n l
 q e u u e o a n l a u l a u a a
 p l m e e q o o p z y g e n l p
 c e x s o t y h r c x z l j e o
 u o f a a o s o t s u n a m i h
 n y c s u r e a p n e t a u c i
 l g u o r a k u m r o a h o s n
 b e l k n t o n x y e h k a d i
 e k a k a u a o m y e i u k m e
 k o n a m h t h h i e t z u a l
 e w e l k s e u a l t i t l p b
 k r e q e k v u e p n a i d u v
 e s h v z r t p v u d n p t w c

1. Hawaiian temple of worship
2. The leaf from this plant was used to make sandals, whistle like musical instruments, hula skirts, rain capes and wrappings to flavor meat and fish in cooking
3. The tree that was most often used to make ancient Hawaiian canoes and surfboards
4. These people travelled nearly two thousand miles over the ocean in canoes to reach Hawaii
5. These early voyagers travelled from the _____ and 6. _____ islands.
7. Western discoverer who is credited with finding Hawaii
8. Hawaiian word for surfing
9. Offerings to the gods were placed on these structures
10. Place of Refuge
11. The wauke tree was used to make this cloth
12. Ancient Hawaiian rules
13. Roots of the _____ plant are pounded with water to make a paste like food called 14. _____
15. Goddess of hula
16. The royal necklace made from human hair and whale tooth
17. Goddess of volcanoes
18. A package of meat wrapped with kalo leaves and steamed
19. Ancient Hawaiian rock carvers carved these into the rocks
20. Hawaiian king who united the Hawaiian Islands through conquering battles
21. The helmet of Hawaiian warriors
22. Shark god who had a red body
23. Ancient Hawaiian priest
24. Elements of this tree were used to make drinking cups, drums, baskets, fans and brooms
25. Hawaiian name for "male"
26. Hawaiian game similar to checkers
27. When the entire community fished together by pounding the water with lau (leaves) driving the fish towards the shore and into nets
28. The feared natural threat of those people living near the sea
29. Hawaiian name for tattoo



FREE BOTANICAL GARDEN TOUR

Buy one get one Free Papaya Boat Filled w/ Tuna Salad & Herb Dressing!!! With this coupon good til' December 31st 1993

Homemade sandwiches, soups, full vegetarian fare, Kona Coffee, fresh baked pies

OPEN 11 am to 3 pm (7 days a week)

(808) 328-9930 P.O. Box 18 Honaunau, HI 96726

A TRULY RURAL DINING EXPERIENCE



Located in the heart of coffee country, Hwy 11 south to Hwy 160 (Painted Church & City of Refuge)



KONA MARKETPLACE THEATRE

Now Under New Local Management

Located at 75-5725 Alii Drive

at the Kona Marketplace in Kailua-Kona

For Showtime Information Call

329-4488



BIG T'S Kona Coffee Co.

give us a call

(808) 326-2170

P.O. Box 511

Kailua-Kona, HI 96745-0511

\$ 2.00 OFF

retail price of any 1 pound package of 100% Kona™ Coffee

Peaberry 16.95 retail

Extra Fancy 15.95 retail

Limit 1 coupon per pound offer expires 12/31/93

WE SHIP ANYWHERE

THE BAD ASS COFFEE COMPANY



100% PURE KONA COFFEE

The native people of Kona, Hawaii, remember the days of the "bad ass ones." The bellows of the donkeys could be heard echoing through the mountains as they hauled the heavy loads of coffee up and down the mountainside. In honor of these hard-working donkeys, we name our coffee company. The legend of the KONA NIGHTINGALE lives on right here at THE BAD ASS COFFEE COMPANY.

CAFE LOCATIONS:

The Bad Ass Coffee Co., Kainaliu
Next to Crystal Star Gallery
322-9196

The Bad Ass Coffee Co., Kailua
Waterfront Row on Alii Drive
326-4637

The Bad Ass Coffee Co., Waikoloa
Highland Center
883-0632

INDEPENDENT DISTRIBUTORS

Hawaii Mac Nut Plantation Inc., Honoka'a
Lower Lehua St.
775-7201

The Bad Ass Coffee Co. Warehouse, Kailua
Next to Giuseppe's Italian Cafe on Alii Drive.
329-8871

Lorenzo's Cafe, Keaau
966-4300

Keep In Touch, Waimea
The Parker Ranch Shopping Center
885-7191

Gloria's Garden Cafe, Hilo
935-3333

ROASTED FRESH DAILY

1-800-338-7139

1993
KONA COFFEE
Cultural Festival



October Events

SUNDAY, OCTOBER 10

Big Island Brunch

10:00 a.m. - 1:00 p.m.

Kona Surf Resort Convention Center

Admission: \$10—Adults/\$6 Children in advance, \$12—Adults/\$8—Children at the door.

Local residents wait all year for this crowd pleasing favorite. Chairperson Jean Hull and the culinary students from UHH-West Hawaii prepare the onolicious dishes using the freshest local ingredients. Great food, entertainment and the first official appearance of the 1994 Miss Kona Coffee contestants.

SUNDAY, OCTOBER 10

Farmers' Market

9:00 a.m. - 2:00 p.m.

Kona Surf Resort Convention Center

The Big Island is famous for its agricultural bounty—Kona coffee, farm-fresh vegetables and produce, and spectacular tropical flowers. Don't miss this opportunity to sample and purchase the Big Island's finest homegrown products, including several private estate coffees not generally available.



SUNDAY, OCTOBER 31

Coffee Picking Contest

Registration 8:30 a.m., Contest 9:00 a.m.

Kona Mountain Coffee Farm (in Kainaliu above Kadooka Nursery)

Delight in the good-natured fun of the novice division and the more competitive pickers as they demonstrate their skills in the prettiest coffee fields in Kona. Bring your bento lunch for a post-contest picnic; BBQ facilities will be made available.

Divisions: Prizes Awarded

- 1) Pioneer, 65+ years of age
- 2) Junior, 11-17
- 3) Keiki, up to 10
- 4) Open: Men's & Women's, 18+
- 5) Novice, for first-time pickers



With the exception of just a few event admission charges, the Festival button is your ticket to all Festival events.

Call 326-7820
 For More Information

THE BIG ISLAND
 OF HAWAII
Celebrate great moments with us!

1993
KONA COFFEE
Cultural Festival



CALENDAR OF EVENTS

Sunday, October 10

BIG ISLAND BRUNCH

10:00 a.m. - 1:00 p.m.

Kona Surf Resort Convention Center

Sponsored by County of Hawaii

Cost: \$10—Adults/\$6—Children in advance,

\$12—Adults/\$8—Children at the door.

FARMERS' MARKET

9:00 a.m. - 2:00 p.m.

Kona Surf Resort Convention Center

Sunday, October 31

COFFEE PICKING CONTEST

Registration 8:30 a.m., Contest 9:00 a.m.

Kona Mountain Coffee Farm (in Kainaliu above Kadooka Nursery)

Sponsored by Bay View Farms and Superior Coffee & Food (Chicago)

Saturday, November 6

FARM FAIR

9:30 a.m. - 9:00 p.m.

Col. Ellison Onizuka Memorial Gymnasium, Kona Waena High School

Sponsored by State Department of Agriculture and First Hawaiian Bank

KONA COFFEE HISTORY DAY

10:00 a.m. - 3:00 p.m.

Kona Historical Society Museum, Kealahou

Sponsored by Kona Historical Society

BLOCK PARTY

4:00 p.m. - 10:00 p.m.

Alii Drive, Kailua Pier to Kona Inn

Coordinated by Destination Kona Coast

Sunday, November 7

BOWLING TOURNAMENT

Adults: 11:00 a.m. - 2:00 p.m.;

Keiki: 2:00 p.m. - 4:30 p.m.

Kona Bowl

Sponsored by Kona Bowl and Meadow Gold Dairies

FARM FAIR

9:30 a.m. - 11:00 a.m.

Col. Ellison Onizuka Memorial Gymnasium, Kona Waena High School

Monday, November 8

KONA COFFEE HULA SONG FEST

7:00 p.m.

Hale Halawai

Tuesday, November 9

COFFEE FARM & MILL TOUR

Various Kona Coffee Farms

Sponsored by Kona Coffee Council

Wednesday, November 10

KONA COFFEE CUPPING COMPETITION & COFFEE ART EXHIBIT

Preliminary Round

8:30 a.m. - 12 noon

Ritz Carlton Mauna Lani

Sponsored by Kona Kai Farms

STEAK FRY

5:30 p.m. No-Host Cocktails, 6:30 p.m. Dinner

Kona Surf Resort

Sponsored by Kona Coffee Council

Cost: \$15

Thursday, November 11

GOLF TOURNAMENT

7:00 a.m. Tee Off

Kona Country Club

Sponsored by Ueshima Coffee Company of Japan

RECIPE CONTEST

8:00 a.m. - 12 noon

Kona Hilton

MEADOW GOLD HEALTHY BABY CONTEST

9:00 a.m.

Kona Surf Resort

Sponsored by Meadow Gold Dairies

KONA COFFEE CUPPING COMPETITION

Final Round & Awards

9:00 a.m. - 12 noon

Ritz-Carlton, Mauna Lani

Sponsored by Kona Kai Farms

LANTERN PARADE

6:00 p.m.

Alii Drive, Pier to Hale Halawai

CULTURAL PROGRAM

7:30 p.m.

Hale Halawai

Friday, November 12

Hale Halawai Events:

9:00 a.m. - 3:00 p.m.

KONA KUPUNA CRAFT &

FESTIVAL OF ARTS

COFFEE ROASTING, TASTING AND

COFFEE MUSEUM

PHOTOGRAPHIC EXHIBIT

IKEBANA FLORAL DISPLAYS

Saturday, November 13

GRAND PARADE

9:30 a.m.

Old Kona Airport to Kona Hilton along Alii Drive

Sponsored by Mac Farms of Hawaii

Hale Halawai Events:

9:00 a.m. - 3:00 p.m.

KONA'S HERITAGE PARK & INTERNATIONAL MARKET

Sponsored by Ironman

LEI CONTEST

COFFEE ROASTING, TASTING & MUSEUM

PHOTOGRAPHIC EXHIBITS

IKEBANA FLORAL DISPLAYS

PIONEER LUNCHEON

12:00 noon

Kona Hilton

Co-Sponsored by Kona Pacific Farmers

Cooperative, Captain Cook Coffee Company,

M.P. Mountanos

23RD ANNUAL MISS KONA COFFEE SCHOLARSHIP PAGEANT

6:00 p.m. No-host cocktails

7:00 p.m. Pageant

Kona Surf Resort Convention Center

Admission: \$10.00 plus your Kona Coffee Festival button!

**Events may be subject to change.*



Volcano Region & National Park Information

Volcanoes National Park has one entrance, off Route 11, 30 miles south from Hilo or 95 miles east from Kona. The park is open 24 hours a day all year round and requires a \$5.00 entrance fee per vehicle which is valid for 7 consecutive days. The hiker/bicyclist/bus passenger fee for people over 16 and under 62 is \$3.00.

When you enter the park during daytime hours you will receive a park brochure at the entrance station. If you enter the park after hours you may pick up the brochure at the Kilauea Visitor Center which is located a quarter mile from the entrance on Crater Rim Drive. The visitor center is open from 7:45 am to 5:00 pm daily.

Visitors are encouraged to take the time to carefully read the park regulations and guidelines. The volcano fumes that exist in the park may create a health hazard for pregnant women, infants and people with heart or respiratory problems. People at risk should avoid stopping at the Sulphur Banks, Halema'uma'u Crater and other areas where volcanic fumes are present.

Overnight trips in the park require a backcountry permit that can be obtained at no charge at the Kilauea Visitor Center.

Once inside the park enjoy the 10-minute movie on eruptions shown hourly at the visitor's center. Other attractions are The Thomas A. Jaggar Museum three miles inside the

park along Crater Rim Drive, The Volcano House, Thurston Lava Tube and scenic vistas. Depending on the timing of your visit you might have a chance to see the volcano erupting.

A 20 minute drive to the end of Chain of Craters Road and a short hike will get you to the eruption site. The park also offers many other hiking opportunities which are mapped out in the park brochure.

Before leaving you won't want to miss The Volcano Art

Center, adjacent to the visitor center. The Art Center hosts the works of some of Hawaii's finest artists. The Center is also responsible for many of the art, cultural, environmental, and community activities happening in the park. The dates and times of these activities are listed in the Coffee Times calendar on page 22.

A reminder to drive slowly and carefully while touring the park as it will help to protect Hawaii's endangered state bird, the nene.

If you are looking for lodging, gas, camping supplies and dining all can be found in Volcano Village just a short drive from the park. The Bed & Breakfasts existing in the region are the favorite choice among visitors staying in Volcano. A complete listing of Volcano B & B's can be seen on page 21 of Coffee Times. One of the most unique lodging opportunities found in the Volcano re-

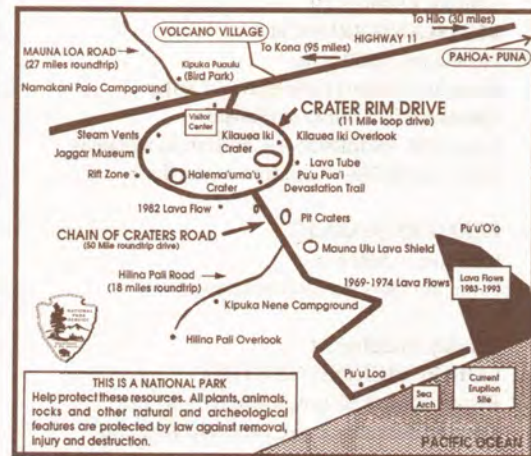
gion is at Chalet Kilauea, The Inn at Volcano, which features rooms decorated with art from around the world and even a treehouse suite. See their ad below. Most everything else you need in the way of gas, food and other supplies can be found at Volcano village's main hub of activity, The Volcano Store. One spectacular stop you do not want to miss when you are in the volcano region is Akatsuka Orchid Garden. Seeing is believing when you arrive at this exotic stop. Enjoy the trip to Volcanoes, its a one of a kind.

For Park Information Call: (808) 967-7311

For Eruption Update Call: (808) 967-7977



The original Volcano House, now the Volcano Art Center, at Volcanoes National Park.



Chalet Kilauea - The Inn at Volcano



EXPLORE TREASURES FROM AROUND THE WORLD

Unique Theme Rooms ~ TreeHouse Suite ~ Vacation Homes
Jacuzzi ~ Fireplace ~ Library ~ Garden

Gourmet Breakfasts

967-7786

Afternoon Tea

No Booking Fee



967-7244

Volcano Reservations

SELECT STATE WIDE ACCOMMODATIONS

Bed & Breakfasts ~ Cottages ~ Vacation Homes ~ Condos

Your Key To Hospitality

BUDGET TO LUXURY ~ GREAT VALUE



Open
6am - 7pm
daily
Groceries
Fresh Fruit
Tropical Flowers
gas & propane

(808) 967-7210

Located in Volcano
village

VOLCANO ART CENTER GALLERY

The finest in island arts and crafts

Located next to the Kilauea Visitor Center
in Hawaii Volcanoes National Park
Open daily 9 a.m. to 5 p.m.

EXHIBIT: "Lava Unlimited"
photography by SABINA MARQUAND

SHAKUHACHI Concert by Riley Lee
Sunday, October 10, Kilauea Lodge

See Coffee Times Calendar for more information

The Volcano Art Center is a nonprofit arts and educational organization founded in 1974. Call 967-8222 for information



Akatsuka Orchid GARDENS

FREE GARDEN TOUR

Wander in awe through our covered garden of exotic orchids and island plants then help your self to a FREE orchid blossom. We feature Certified Hawaiian orchid plants, cut flowers & anthuriums. Take them home or we'll ship them for you!

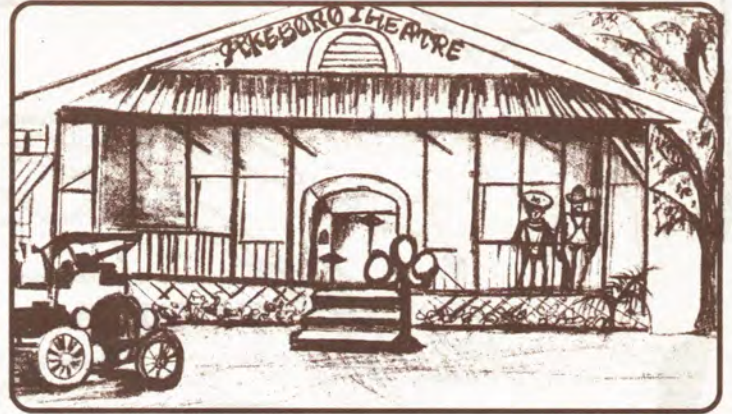
LOCATED ON HWY. 11
22 1/2 MILES FROM HILO

(808) 967-7660 P.O. Box 220, Volcano, HI 96785

Historic Main St.
Pahoa - Puna, Hawaii
Quaint Shops, Local Food,
Arts, Crafts

For visitors who want to experience the feeling of old Hawaii, Pahoa village holds the key to this untouched past. First a rugged sawmill town then a sugar town and also a crossroad on the old railroad, Main Street Pahoa has maintained its western style storefronts and wood boardwalks in a charming turn of the century Victorian style. Beyond the town, the countryside surrounding Pahoa is filled with natural wonders like the Lava Tree State Park, steam vents, and black sand beaches.

Visitors are warned however that a prolonged stay in this Aloha time capsule may make leaving a very difficult task.



Naung Mai
Thai Kitchen
"We serve Cheng Mai, Bangkok & Phuket style cuisine."
Vegetarian Entrees offered
Mon. - Fri. 12-8:30
Closed Sat. & Sun
965-8186

BAMBOO HOUSE
Unique Private Lodging
in Downtown Pahoa
Call
(808) 965-8322
for Information

FOUNDED 1917
AKEBONO THEATER
Local Performing Arts Center
Plays, Movies, Live Music
CALL
(808) 965-9943
or
see Coffee Times Calendar for show schedule.

THE VILLAGE INN
HISTORIC PAHOA
BUILT IN 1910
P.O. BOX 1987 - PAHOA HAWAII 96778
(808) 965-6444
LODGING & HAWAIIANA CURIO SHOP
\$39.95 double & up

NATURAL GROCERIES
PAHOA
Organic produce Health Foods
Open 9 - 9 p.m.
Sunday 9 - 6 p.m.

LUQUIN'S
MEXICAN RESTAURANT
Chili Relleno, Carnitas,
Tamales & Taquitos
FREE CHIPS & SALSA
with Dinner
OPEN DAILY
11 a.m. to 9 p.m.
965-9990

Yo Pizza!
and baked goods
NEW OUTSIDE DINING UNDER THE GAZEBO
Discount Group Rates!!!
OPEN Mon - Wed 11-9 pm
Th - Sat 11-10 pm
Sun 2:30 - 10 pm
Call ahead for take out
965-7033

GUIDED TOURS OF PUNA
Remote and exotic destinations.
Snorkel, Surf, Hike, Bike
Call Patsy Ivy for information at:
966-4946

In The Beginning....
EL SALVADOR
A comprehensive photo-documentary detailing life in the war-zone of El Salvador in Central America.
Autographed Copies available on request by sending \$10.00 to:
Spiri Freelance International
344 Olu St.
Hilo, Hawaii 96720

NATURAL EMPORIUM
PAHOA
Imports, Clothing, Jewelry, Gifts,
Open 10 am to 6 pm

huna ohana
METAPHYSICAL BOOKS & ESPRESSO CAFE
VEGETARIAN FOOD
Breakfast 8-11 am
Lunch 11-5:30 pm
Muffins, croissants, salads, sandwiches & 100% pure organic Kona Coffee
P.O. Box 536 Pahoa, HI 96778
(808) 965-9661

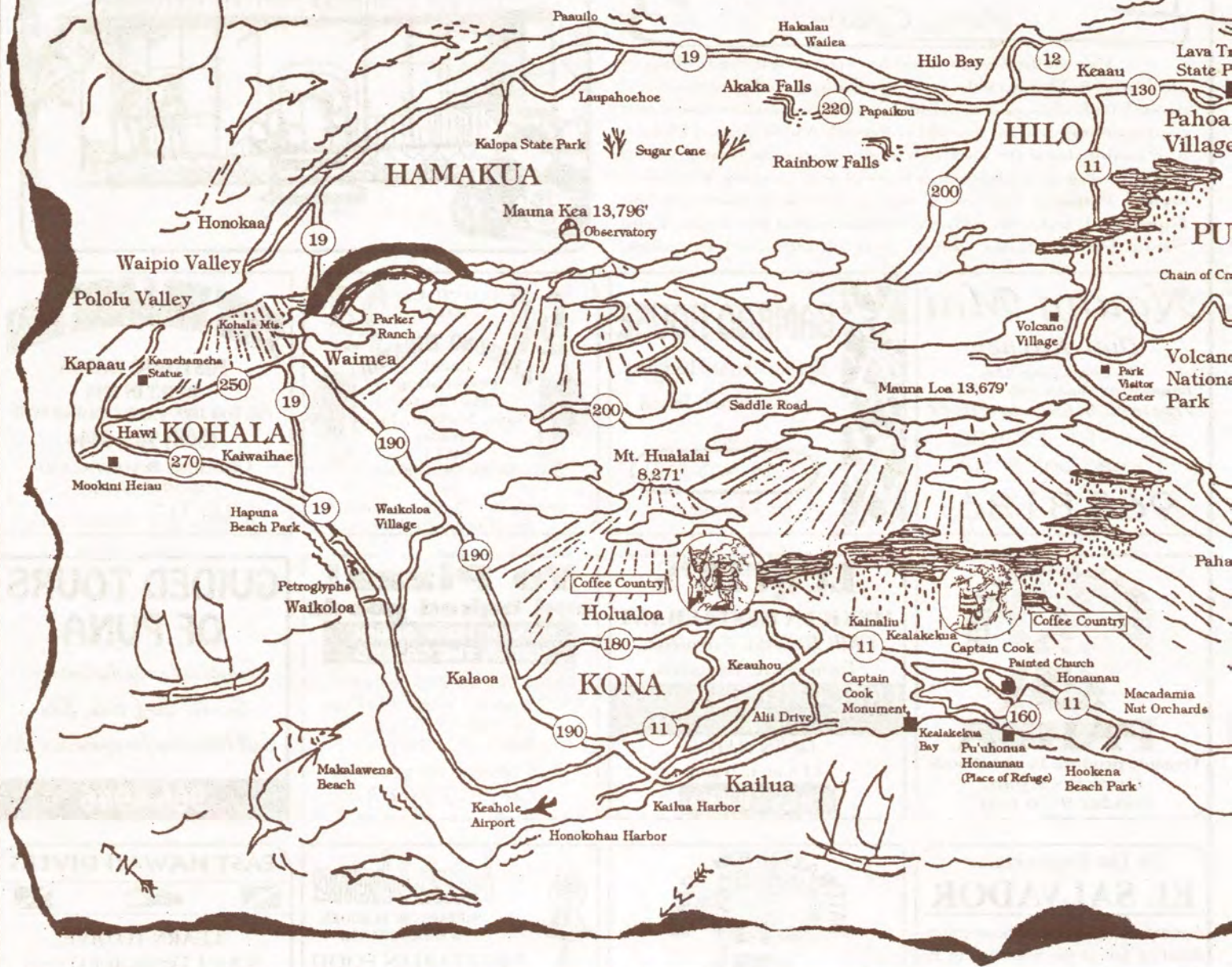
EAST HAWAII DIVERS
LEARN TO DIVE
N.A.U.I. Certification Courses
Scuba and Snorkel Tours,
Introductory Dives, Quality Air
CALL 965-7840
Philip Caporusso Instructor
P.O. Box 2001, Pahoa, HI 96778

I KNOW

HEMP FASHIONS
designed & made in Hawaii
CLOTHING, FOOD, PAPER, LITERATURE & ART
Our Planetary woes need a green solution yet Earth's most useful plant is illegal to grow in the U.S.! Cannabis produces the Highest Quality Food Fiber, Fuel & Medicine. Our planet's survival is threatened by the hemp prohibition. Come see the "Illegal Cloth" on the highest spot in Pahoa. We offer a huge selection of Hemp Fiber clothing. Please send \$2.00 for our catalog.
P.O. Box 2056 Pahoa, HI 96778 (808) 965-8600 or Fax 965-6242

HAWAIIAN HEMP COMPANY PAHOA, HAWAII

HAWAII



Left: Koa Air Service pilots, Stefan Mair, left and Tim Gaffney, right. Take a trip around the Big Island by air, view Hawaii's volcanoes, waterfalls and valleys, great photo ops!!! Call 326-2288. Center: Reef tours hourly and special group charters upon request, call 326-2003. Right: Up and running is the newly restored and fully functional Kahe Theater in Hawii. The Kahe Theater was built in 1940 and



Left to Right in front of the Old Okamura Store (The Volcano Store) in Volcano Village: Clara Shiota, Ronald Onouye, Marie Onouye and Sara Carlson.



The newly restored Ahu'ena Heiau in Kailua Bay. The heiau was the center of political power during King Kamehameha's rule.



Nautilus Semi-Submersible heading out of Kailua Bay for another underwater viewing excursion, presently showing feature films on the weekends.

What to see:

- HISTORIC HILO**
Early 20th century Hawaii happily lives on in the storefronts and buildings of this yesterday town. Outside the town are magnificent Akaka Falls and Hawaii Tropical Botanical Garden to the north.
- VOLCANOES NATIONAL PARK**
Home of Pele, the Hawaiian goddess of fire. A region of unique features, volcanoes and a diverse biosphere. See page 6 of Coffee Times for volcano information.
- CAPTAIN COOK MONUMENT**
The spot in Kealahou Bay where English navigator, Captain James Cook was killed in 1779.
- PU'UHONUA HONAUNAU**
An ancient Hawaiian village that is now a national park. Located in south Kona. Stop and see the Painted Church along the way on Hwy 160.
- WAIPIO VALLEY LOOKOUT**
Spectacular views into a lush valley of waterfalls, rivers and cascading cliffs. (4WD, horse, or a hike are necessary for access into the valley)
- WAIMEA COUNTRY**
In the heart of Big Island ranch country this western style town sits at the base of Mauna Kea.
- AKAKA & RAINBOW FALLS**
Two separate waterfalls northwest of Hilo. Easily accessed by car and short enjoyable paved hikes.
- HEIAUS & PETROGLYPHS**
Both can be found on the Kohala coast. The petroglyphs can be seen by following a path on top of the lava rocks at the Royal Waikoloan Resort.
- POLOLU VALLEY LOOKOUT**
A northern valley lookout. The road there will take you through friendly N. Kohala towns and perhaps a view of Hawaii's neighboring islands.
- PUNA DISTRICT**
Hosts the rustic western style town of Pahoa in addition to wild roadside orchids, steam vents, Lava Trees State Park and black sand beaches.
- SOUTH POINT U.S.A.**
The southern most point in the U.S. It boasts a magnificent ocean side drive through rolling green hillsides filled with Holstein cows grazing above a coast line of rugged cliffs and crashing waves.

EAST HAWAII

When you talk about the old Hawaii, at least the one that hasn't been touched as much today by the long arms of commercialization and development, you can not help but to mention the East Coast on the Big Island. At the center of all this is Old town Hilo which is seeing a revitalization of spirit thanks to the effort of the Downtown Hilo Organization which is busy restoring and preserving the storefronts of this yesterday town. Aiding this effort are the wealth of new businesses occupying Hilo's old buildings. One of the brightest spots has been the renovation and remodeling of the S. Hata Building by Cafe Pesto. This new restaurant has maintained the building's Renaissance Revival style of architecture and filled the air with smells of wood oven baked pizza and Pacific Rim Italian cuisine.

To add to this old Hawaii feeling are the daily Suisan Fish Market Auction and the Hilo Farmer's Market every Wednesday and Saturday in Downtown Hilo. Outside the town to the north are the Hawaii Tropical Botanical Garden, located along a 4 mile coastal scenic route, and Akaka Falls with its self guided pathways that takes visitors over ravines and past several other waterfalls before ending up at the grand daddy of them all, Akaka.

When you are done sight seeing lodging in Hilo is a snap and can accommodate every type of visitor. The magnificent and luxurious Hale Kai Bed and Breakfast on the bluff above the ocean overlooks Hilo's premier surf spot,

Honolii. Expect nothing less than gourmet breakfasts and plenty of privacy. If you are looking to stay within walking distance to downtown Hilo stop in at the affordable Wild Ginger Inn which features a jungle garden and stream setting overlooking Hilo Bay. If a stay in the Hawaiian countryside is what you are looking for head seven miles north out of town to Papaikou and check in at Hale Lamalani vacation rentals.

Situated at 1,000 feet above sea level this country retreat offers plantation style lodging with all the serenity one could ever desire.

After leaving Hilo you don't want to miss the drive north to Waipio Valley over scenic gorges that were once crossed over by cane hauling trains. The plummeting waterfalls and river mouths under the extensive bridge systems leading north up the Hamakua Coast are definitely an awesome sight.

When you reach the north eastern part of the island be sure to stop in Honokaa town and see the new Hale O' Kauwehi. The shop features arts and crafts made only in the islands and is celebrating its October grand opening. About the only thing left to tell you about is the one thing that probably needs no introduction, Waipio Valley. Seeing is believing and few words can do this sight justice. Enjoy your trip through EAST HAWAII and historic Hilo, where as each day passes a new look will certainly continue to dawn with the old.



Hawaii Tropical Botanical Garden

45 Beautiful Acres at Onomea Bay
See for yourself why it has been called "Heaven on Earth"



OPEN FROM
8:30 a.m. to 5:30 p.m.
7 DAYS A WEEK

FREE ADMISSION
FOR CHILDREN

Located 7 miles north
of Hilo on Hwy. 19
Look for the sign that
says:
"Scenic Route
4 Miles Long"

FOR MORE
INFORMATION
CALL

964-5233

GRAND OPENING OCTOBER 1st 1993

Hale O' Kauwehi

Hawaiian Made Clothing, Arts & Crafts
Shop and Galleria

Street front location in Honokaa Town
Next to Pacific Coast Realty

T. Yamatsuka Bldg.
45-3590 Mamane St. Suite #101
Honokaa, Hawaii 96727
Ph. (808) 775-0255

Fely Kaluhiokalani - owner

E Komo Mai - Open Hawaiian Time Like Dat
Hours: Monday & Tuesday 10am - 5:30pm
Wednesday 2pm - 6pm, Friday & Saturday 10am - 8pm
Thursday & Sunday Closed



Hale Lamalani a Vacation Rental

Ocean & Garden Views
1940's Plantation Style Home
\$50 NIGHT

(808) 964-5401

Located 5 miles north of
Hilo before Botanical Garden
and Akaka Falls at the
gateway to Hamakua.



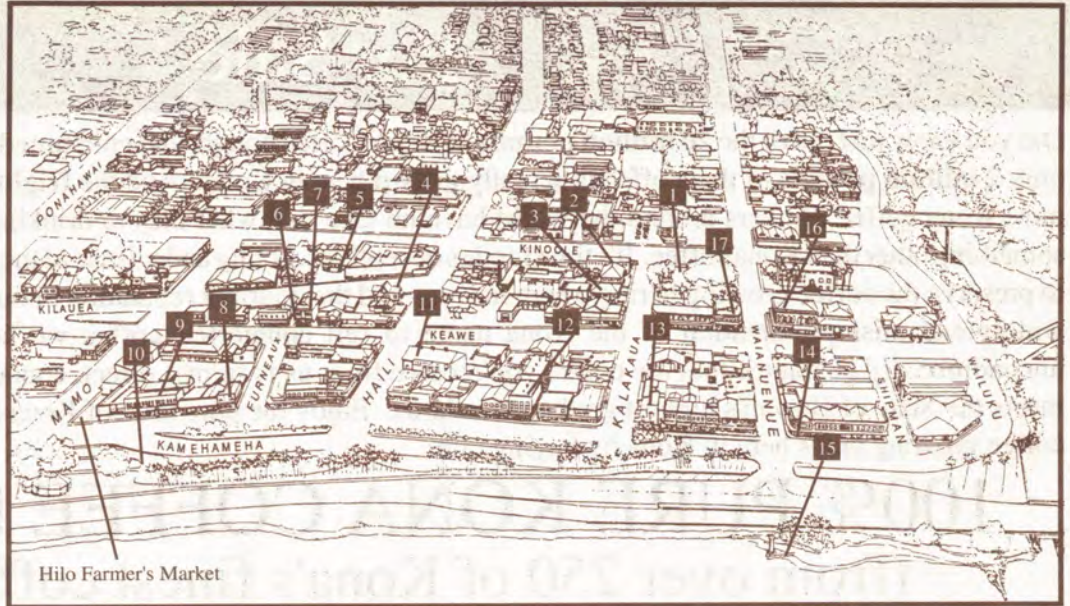
Brochure available RR1, Box 206, Papaikou, Hawaii 96781



VISIT HISTORIC HILO¹⁷

Historical information and map provided by the Downtown Hilo Organization whose interests involve the preservation of Old Hilo, Hawaii.

1. Kalakaua Park
2. Old Police Station
3. Hawaiian Telephone
4. Central Christian Church
5. Taishoji Soto Mission
6. Furneaux Lane
7. Ancient Order of Foresters Building
8. Furneaux Building
9. S. Hata Building
10. Bayfront
11. Palace Theatre
12. S.H. Kress Company Building
13. First Hawaiian Bank Building
14. Koehnen's Building
15. Landing Wharf
16. First Trust Building
17. Pacific Building



This self-guided walking tour of historic Downtown Hilo will take about one hour if walked continuously. However, you are encouraged to go at your own pace and spend additional time discovering and exploring that which interests you.

The seventeen stops along the way will provide you with information about the town from 1870 to the present. The history of Hilo begins much earlier, however, with the arrival of the Polynesians in 1100 A.D. They eventually inhabited the shores of Hilo Bay, farmed their crops, fished and traded their goods with each other along the Wailuku River. Changes came to this life-style upon the arrival of missionaries who brought with them new ideas, education and Christianity.

Hilo became a stopping place for explorers curious about the active volcanoes, whaling ships and traders. By the 1900's a number of wharves had been constructed, the breakwater was begun and the railroad connected Hilo with other parts of the island. Hilo became the center of commerce. Two destructive tsunamis, in 1946 and 1960, caused a shift in the location of Hilo's government and commercial life.

Today, historic Downtown Hilo is alive and bustling with renewed energy. New and old businesses alike are meeting the challenge of revitalizing our city center while preserving the historic character which remains very special.

whether you choose...

WOOD-FIRED PIZZAS
FINE PASTAS
OR
SCRUMPTIOUS DESSERTS

you will always get...

AN ADVENTURE IN TASTE

CAFÉ

Pesto
HILO BAY

OPEN FOR LUNCH & DINNER
Historic S. Hata Bldg. Hilo Bay, 969-6640
Kawaihae Center, On the Kohala Coast, 882-1061
Fri. & Sat. 9pm-12pm Live Jazz by ZSAZZ
Sun. 5pm-8pm Hawaiian Music by Keonaona

Hale Kai Bed & Breakfast

Bjornen



A 4 Star Bed & Breakfast on the bluff facing the ocean
and overlooking Hilo Bay and Honolii surfing beach

VERY PRIVATE, POOL, JACUZZI, BREAKFAST,
Private Baths, Well Decorated Rooms

111 Honolii Pali, Hilo, HI 96720

(808) 935-6330 Fax 935-8439

1940's Plantation
style B & B
with jungle
garden &
stream. A
nonsmoking Inn.

*Wild
Ginger
Inn*

\$39 private
bath double
with breakfast.
100 Pueo St.
Hilo, HI 96720

Call 808-935-5556

BED & BREAKFAST

100% PURE KONA™ COFFEE

For Sale

Did you know that out of the **20 million pounds** of Kona Coffee bought and **consumed** every year under the name Kona only **2 million pounds** of that coffee is actually **grown** here in Kona! And the **frightening fact** of the matter is...that most Kona coffee drinkers around the world have no idea that what they're drinking is a coffee containing 90% of something other than Kona coffee. It's time for this deceptive labeling and misuse of the Kona name to end. In an attempt to preserve the coffee growing heritage here in Kona and the gourmet reputation of our local coffee and to combat this widespread misrepresentation of the Kona name to sell counterfeit coffee we here at Coffee Times magazine unconditionally guarantee that the coffee you receive from us is farmer direct, contains only 100% Kona coffee and meets the State of Hawaii's highest grading standards. Enjoy the pure taste of Kona and support our farmers and our coffee growing lands here in Kona by buying only...

100% PURE KONA COFFEE farm direct (from over 250 of Kona's finest coffee farms)

Truly graded, hand picked, sun dried 100% pure Kona coffee beans roasted to order:

ORDERING INFORMATION

Type	Roast	Lbs.	Total
_____	_____	_____	\$ _____
_____	_____	_____	\$ _____
_____	_____	_____	\$ _____
_____	_____	_____	\$ _____
_____	_____	_____	\$ _____
_____	_____	_____	\$ _____

Delivery Charges \$ _____

Please add \$3.50 for 1st pound
& \$1.50 for each additional pound

Grand Total \$ _____

Shipping Address: _____

Please mail with check or money order to:
Coffee Times, P.O. Box 1092, Captain Cook, HI 96704
Please allow up to 1 week for delivery

PEABERRY

The finest flavored coffee bean available (The result of single bean growth in the usual two bean coffee cherry)

16.95/lb. 79.95/5 lb. 149.95/10 lbs.

EXTRA FANCY

The highest quality, high elevation, large bean coffee

15.95/lb. 74.95/5 lbs. 139.95/10 lbs.

FANCY

Excellent quality, smaller bean, high cupping standard

13.95/lb. 64.95/5 lbs. 119.95/10 lbs.

PRIME

The choice bean of most specialty Kona coffee consumers.

9.95/lb. 44.95/5 lbs. 79.95/10 lbs.

FLAVORED KONA COFFEE

Vanilla, Macadamia Nut & Chocolate Macadamia Nut

15.95/lb.

(please specify medium, dark or espresso roast)

WE SHIP WORLD WIDE

CALL (808) 326-7637

P.O. Box 1092, Captain Cook, HI 96704

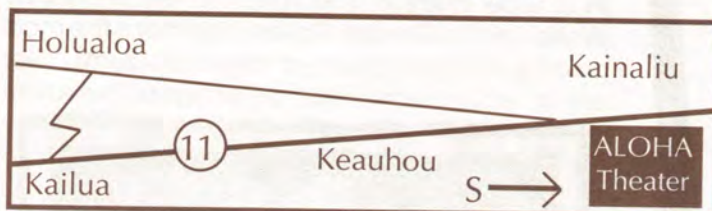
ALOHA THEATER COMPLEX IN KAINALIU



Located just a short drive south on highway 11 from Kailua-Town, central to Kona's coffee country, is the historic

Aloha Theater Complex built in 1932. Local theater performances produced by the Aloha Performing Arts Center and various other local community groups are on stage every month at the complex that also hosts a Cafe, Village Store and Dance Academy. At the cafe visitors can enjoy breakfast, lunch and dinner which includes many vegetarian specialties. A second floor bake shop turns out breads, cakes and cookies that fill the glass case just inside the front door to the theater.

Relax on the outside lanai while you sip a cup of pure Kona coffee, something very few restaurants on the Big Island actually serve. Wander next door to the Village Store and find Hawaiian gifts, fresh fruits and always a local tune playing through the speakers. To round off this Aloha experience the local Academy of Dance run by Reni Damron is always alive with people of all ages practicing tap, ballet or jazz in the hall that is located at the north end of the complex.



BALLET
TAP
JAZZ

Damron's
ACADEMY
of DANCE

ALL AGES

(808) 322-8119

P.O. Box 325, Kealahou, HI 96750

ALOHA VILLAGE STORE

8 a.m. to 6 p.m.
Monday - Saturday
8 a.m. to 8 p.m. Fri.
9 a.m. to 4 p.m. Sun.
322-9941

Great gifts for All Occasions

Groceries, organic foods, fruit (fresh & dried)
vitamins, teas, coffees, island music tapes

ALOHA CAFE THEATER

"DELICIOUS HOMEMADE GOODNESS"

Open for breakfast, lunch & dinner
8 a.m. to 8 p.m. Mon. - Sat
Sunday Brunch 9 a.m. to 2 p.m.

THE BEST BURGERS IN KONA

MEXICAN SPECIALTIES
FRESH BAKED BREADS, CAKES, COOKIES...
ESPRESSO BAR
INTERNATIONAL BEER & WINE SELECTION

IN THE HEART OF KONA COFFEE COUNTRY

322-9941

ALOHA PERFORMING ARTS CENTER
ALOHA COMMUNITY PLAYERS PRESENTS
ALL EVENING PERFORMANCES AT 8:00 P.M.
* Denotes 2:00 pm Matinee

Supported in part by a grant from the State Foundation on Culture and the Arts

FOR INFO CALL 322-9924



BIG RIVER
An ACP/ACT Production

Oct. 22, 23, 24*,
28, 29, 30, 31*
Nov. 4, 5, 6, 7*,
11, 12, 13
Adults: \$10
Children: \$8

Mark Twain's *Huckleberry Finn* brought to the stage with country music by Roger Miller and book by William Hauptman. Directed by Jerry Tracy. Music Direction by Ken Staton.

The Aloha Children's Theatre Presents
The Hobbit
Tolkien's wild adventure into middle earth by Patricia Gray.
NOV. 26, 27, 28, DEC. 2, 3, 4, 10, 11, 12

HUCKLEBERRY FINN IS ON HIS WAY!!!

The "Big" Musical **Big River** will be presented by the Aloha Community Players and the Aloha Children's Theatre from October 22 through November 13 (and that includes three Sunday Matinees) at the Aloha Theatre in Kainaliu. Jerry Tracy will be directing, Ken Staton will be the "Maestro of the Mississippi" as Musical Director, Khris Pokini is the Choral Director and Associate Music Director, and Victoria Heckman is putting the cast through lively routines as Choreographer. Bob Haber has the busy job of Assistant Director and Stage Manager, Betsy Iona and Laura Hoist share the Costumer slot and Robin Hurlbutt will be Property Mistress. The fanciful set is being designed by Skip Goodell of Cisco & Associates, Architects, and the building (raft and all) will be handled by Eugene Gall.

Auditions have been held and the Theatre is literally "jumpin'" with the sounds of Roger Miller music and the delightful images of Huck and the boys...Jim and the River...with all the nostalgia and joy of a Mark Twain story in rehearsal.

Jon Mehlig is cast as Huck and Henry Ivy as his river raft buddy, Jim. Sheila Everett as the Widow Douglas and Toni Mott as Miss Watson try to change Huck's ways...so he'll "go to the good place!". L. Bernard Marsh will be cantankerous ol' Pap, while Vince Mott as the Duke and Mike Nolls as the King portray the craziest con men imaginable. Cathy Hanson is cast as Tom Sawyer's Aunt Sally and Don Giles as Uncle

Silas, as well as Judge Thatcher. Hayden Stephens will open the show and cruise throughout as Mark Twain. Blake McMillen will play Tom Sawyer with Brady Beshore (Jo), Christopher Wiley (Dick), Justin Wiley (Simon), Christopher St. Hilaire (Ben), Maxfield Marquardt (Andy), and Amadon Jaeger (Mitch) as the gang of boys. Eddie Strayhord will be Counselor Robinson, Trelys DuPre' plays Alice and Rebecca Marsh plays "the strange woman". "Malia" Page will be singing the role of Betsy. Jade McMillen is features as Mary Jane with her sisters, Susan and Joanna, played by Hannah Mell and Becky Stephens. Megan McMillen plays Alice's Daughter.

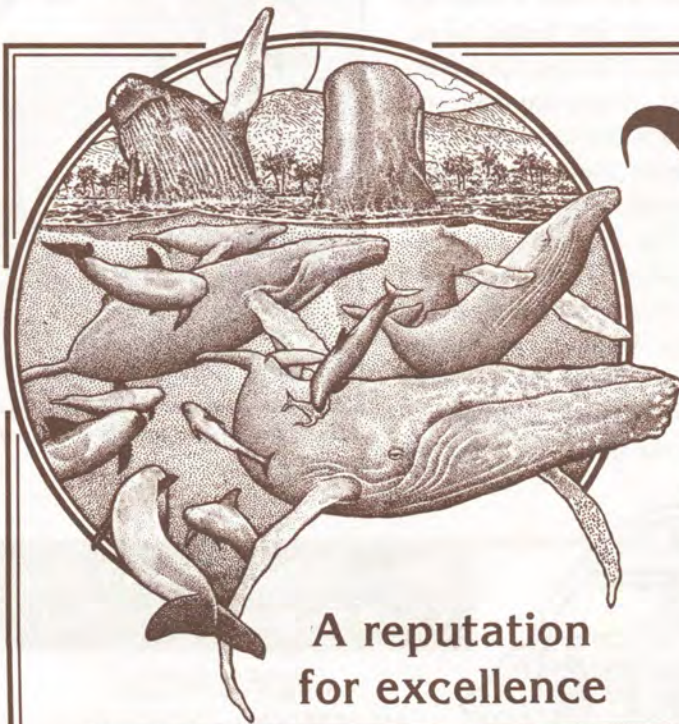
The cast is rounded out by slaves, townspersons, tarts and mourners played by Darlene Babin, Gabriel Emanuel, Stephanie Goodell, Sarah Hoist, Tanisha Ivy, Armond Jackson, Ian Jung, Erica and Gayle Keller, Rod Lewis and Jon Anthony Naihe. Many in the cast double-up on other parts and everyone in the cast sings and dances. Featured dancers are Darlene Babin, Becky Stephens, Toni Mott, Hannah Mell, Armond Jackson, Ian Jung and Sheila Everett.

Big River, a family show, promises to please Big Island audiences as have other recent Aloha Performing Arts Center musicals: KING AND I, THE SOUND OF MUSIC, and BABES IN TOYLAND.

Tickets will be \$10 for adults and \$8 for students. Call the APAC office at 322-9924 for group discount information.



Outlandish Con-men
left to right: Mike Nolls as the King
and Vince Mott as the Duke



**A reputation
for excellence**

Months that Whales are seen in Kona/Kohala Waters												
	Jan	Feb	Mar	Apr	May	Jun	Jul	Aug	Sep	Oct	Nov	Dec
Pilot Whales	Yes	Yes	Yes	Yes	Yes	Yes	Yes	Yes	Yes	Yes	Yes	Yes
Sperm Whales	Yes	Yes	Yes	Yes	Yes	Yes	Yes	Yes	Yes	Yes	Yes	Yes
False Killer Whales	Sometimes			Yes	Yes	Yes	Yes	Yes	Yes	Yes	Yes	Yes
Beaked Whales	Yes	Yes	Yes	Yes	Yes	Yes	Yes	Yes	Yes	Yes	Yes	Yes
Humpback Whales	Yes	Yes	Yes	Yes	Yes	Yes						Yes
Dolphins	Yes	Yes	Yes	Yes	Yes	Yes	Yes	Yes	Yes	Yes	Yes	Yes
Others: Melon-headed, Pygmy, Killers, etc.	Yes	Yes	Yes	Yes	Yes	Yes	Yes	Yes	Yes	Yes	Yes	Yes

Capt. Dan McSweeney's *Whalewatch* "BE AMONG FRIENDS"

"See Hawaii's Year Round Whales"

Come join Captain Dan McSweeney, Kona's whale scientist/guide with over 25,000 hours experience, on a whale watching adventure.

HELP PROTECT THE WHALES
proceeds benefit whale conservation

322-0028





Misha, raking the parchment on the drying decks at Old Hawaiian Coffee. The parchment will slow dry in the sun for up to 15 days.

continued from page 7

shell, around the coffee beans called parchment. The parchment is important if the coffee is going to be stored and can greatly increase the bean's storage life and if done properly can be kept for several years. In Kona that storage life is not always necessary because of Kona coffee's high demand in the world marketplace.

The next step in the process is removing this parchment and taking the coffee to what is called the "green stage" simply meaning the state of the bean before it can be roasted. At Old Hawaiian this step is completed at yet another mill which not only removes the parchment but is also certified to grade the coffee as well. This grading process is important because it is a product assurance program that is designed to maintain the integrity and distinction of quality in the different grades of Kona coffee. Before this grading takes place however, the green beans are placed on a gravity table that removes the defective beans. These defects are usually hollow or deformed beans weighing considerably less than what a true bean would weigh.

The final step is now to separate the different sizes of beans through grading screens with varying sizes of holes. This size differentiation, the larger the better, is what separates the different grades of Kona coffee. These primary grades are Peaberry, Extra Fancy, Fancy, and Prime. Peaberry, (the result of single bean growth in the usual two bean coffee cherry) is often regarded as the choice bean of coffee connoisseurs because it is said to retain and condense, in one bean, the richness and taste of

two coffee beans. Extra Fancy is usually the result of higher elevation late blooming berries that grow larger and much slower than those grown at lower elevations. The Extra Fancy is regarded to have the best cupping characteristics of any bean grown in Kona. The cupping qualities of this coffee are noticeably higher than that of the lower grades but most often can not be noticed by the casual coffee drinker. The fancy and prime are respectably smaller beans but for most consumers they find that this coffee cups up extremely well and is far cry from the average coffee found on the supermarket shelf.

Detrimental to this process and the reputation of Kona coffee are those renegade coffee companies that abuse the name Kona by using it to sell coffee other than Kona. If you are interested in acquiring the real thing it may be worth your while to investigate the source of your Kona coffee. For now, this is the consumers only protection against buying a fraudulent product. Remember, Kona coffee only constitutes a little less than one percent of the world's total coffee supply.

After the coffee has been graded it is usually bought and sold as is any commodity, and should be kept green until it is roasted for order. Keeping the roasted coffee in its whole bean form will also keep it from becoming stale and grinding the coffee just before brewing yields the best cupping results.

Because it is so labor intensive many of the farms in Kona do not have the ability or equipment to take the coffee all the way from the tree to the roast and onto the retail shelf. Old Hawaiian Coffee Farm and Mill is no exception. But when you tour the farm and mill visitors are able to see first hand how the majority of this process is performed. If you are interested in a tour of the farm and mill it is open daily and can be reached by travelling to mile marker 105 on Highway 11 in Honaunau. From there, find your way up to paradise following Misha's hand made signs and enjoy the real story of how coffee is produced, "from the tree to the roast". ■



Misha beside the farm's 1884 coffee grinder

Open flame stoves, classic
Indian style curries & stirfry

Located in the Banyan Court Mall
on Alii Drive in Kailua-Kona

"SIBU CAFE serves the best and the most
interesting, moderately priced food in
Kailua-Kona."

Hawaii Handbook '92



SINCE 1982

75-5695 Alii Drive Kailua-Kona, HI 96740

Specializing in Indonesian
and Southeast Asian Food

GARDEN FRESH
VEGETARIAN SPECIALTIES

AVAILABLE

TAKE OUT OR EAT IN

Open 11:30-9 p.m.

(808) 329-1112



Marushka

has moved Upcountry!

Now exclusively at:

Upcountry Connection

Gallery of Art & Antiques

Marushka Hand-Beaded Jewelry

Kelim Vests, Purses & Belts

Original Art Work

Bronze, Ceramics and Wood

Quality Antiques

Upcountry Connection

Gallery of Art & Antiques

(808) 885-0623

Waimea Center - Kamuela

Waimea Country



Between snow capped Mauna Kea and the Kohala mountains the green hillsides of North Kohala roll along under wispy white clouds and afternoon rainbows that frequently stream their way from the skies above Kamuela, Waimea. Inside this landscape herds of grazing cattle can be seen migrating their way through sloping pastures filled with cactus and dry underbrush as Hawaiian cowboys called paniolos still ride horseback working the ranges.

Ranching began in this region of the Big Island after King Kamehameha appointed, in 1815, a young seaman named John Parker to hunt and shoot the herds of wild cattle who's population had grown uncontrollably since their introduction to Hawaii in 1793. Parker, who accomplished his mission, managed to domesticate a herd of his own before marrying a Hawaiian chiefess. The marriage helped Parker to acquire the land that would later be used to found his 250,000 acre ranch in 1847. Today's existence of Parker ranch as one of the largest ranches in the United States gives the outsider an idea of the magnitude of its size.

Today, the town of Kamuela, more often referred to after its district name Waimea, is a town that still surrounds itself with a ranching lifestyle. The brightly colored Victorian houses and shops, tidy yards filled with flowers and skeleton remains of wagons and wheels gives visitors the opportunity to see yet another sphere of the diversity of cultures that exist in Hawaii. Beginning a tour of Kamuela with a cup of java and a bite to eat at The Waimea Coffee and Company is a great place to start. Across the street at Parker Square, Waimea General Store hosts a wide variety of Hawaii Books, and is filled with cook and dinnerware, cards, stationery, and many other interesting nick nacks. Make sure you don't miss stopping at Cook's Discoveries and Visitor Information Center at Historic Spencer House and Up Country Connection Gallery of Art & Antiques, both are located in Waimea Center. The marushka hand-beaded jewelry is a must see at Up Country Connection while the Koa Music Boxes at Cook's Discoveries are a very unique find in Hawaii.

On a final note you might want to check the calendar on page 22 for any up coming rodeos being held in Waimea.

WAIMEA COFFEE COMPANY

For a welcome break in your day offering the best cappuccino, gourmet treats & lunches
100% Pure Estate-Grown Kona Coffees

We mail-order anywhere!

1-800-854-5662 or 885-4472

In Waimea on Hwy 19
 (across from Edelweiss Restaurant)



Cook and Dinnerware
 Hawaii Books
 Yarns, Soaps
 Cards and Stationery
 Local T-Shirts

GIFT WRAPPING & SHIPPING
 OPEN DAILY

Located In PARKER SQUARE Waimea
885-4479



Discover the Best of Hawaii

AT COOK'S DISCOVERIES

Open daily 10 a.m. to 6 p.m.

In Historic Spencer House circa 1850 - Waimea Center Next to McDonalds (Hwy 19)

885-3633

AND VISITOR INFORMATION CENTER

Made in Hawaii treasures, koa music boxes, Hawaiian books, Leisure wear by Sig Zane, Lauhala hats, purses & placemats, sandalwood & milo bowls, Harry Wishard, Kathy Long & Doug Tolentino originals and prints, Mother Goose Farms 100% Organic Kona Coffee, Ni'ihau, wiliwili, kukui & elephant ear seed leis and many other local treasures, many under \$15.

WE MAIL ORDER AND SHIP WORLDWIDE





October's Feature Bed & Breakfasts

Merryman's Bed & Breakfast

MERRYMAN'S BED & BREAKFAST: Innkeepers: Don & Penny Merryman, P.O. Box 474, Kealahou, HI 96750, (808) 323-2276, 1-800-545-4390, Rates: \$65 - \$95. Notes: Private baths.

This charming and immaculate B&B is located on a hillside in the quaint coffee farm country of Kealahou-Captain Cook area. If you are looking for a quiet, peaceful home away from home, you won't be disappointed when you stay at the Merryman's. Their beautiful cedar home with large lanai, park like setting and gracious hospitality is pure delight to the weary traveler. Guests may choose from four spacious and tastefully decorated rooms with either a garden or ocean view. The sunset seen from the large lanai is the highlight of the afternoon. Mornings start off with the smell of fresh brewed Kona coffee accompanied by local exotic fruits and chef's daily specials such as Penny's fresh banana pancakes and Don's famous quiche.

Merryman's is centrally located to all activities offered on the Kona coast and is just minutes away from the famous Captain Cook monument in Kealahou Bay which is an underwater sea life park. Don and Penny will direct you to the best beaches and activities such as kayaking, snorkeling, horseback riding and share valuable island information to help you plan your day. In addition, the Merryman's offer complementary snorkel gear, boogie boards and beach supplies to all guests.



Wild Ginger Inn

WILDGINGERINN: Innkeepers: Robert and Sandy Woodward. 100 Puueo St., Hilo, HI 96720, (808) 935-5556, Rates: \$39 Notes: Private baths.

Located just a short walk away from downtown Hilo and overlooking Hilo Bay, the Wild Ginger Inn lies tucked away in a remote tropical setting complete with jungle garden and stream. The plantation style inn was originally built in 1940 and offers guests very affordable and spacious accommodations for only \$39 a night including breakfast. Visitors will always find a stalk of bananas hanging in the main hall and a wealth of Big Island brochures and travel literature at their disposal. The large number of rooms available at the inn can accommodate groups travelling together which can be hard to find when looking to stay in a setting similar to a Bed and Breakfast.

Within walking distance to the Wild Ginger Inn are plenty of dining and shopping opportunities waiting in old downtown Hilo. Also located near by are Rainbow and Akaka Falls the Hawaii Tropical Botanical Garden, beaches and Volcanoes National Park, 30 minutes away. The Wild Ginger Inn prides itself on having a clean nonsmoking environment for its guests looking for a healthy and restful stay in Hawaii. Feel free to call the innkeepers, Robert and Sandy, they would be happy to assist you in your Hawaii travel plans.

From the Southernmost District of Hawai'i Island

KA'U LANDING

(808) 928-6449

P.O. Box 160, Pahala, Hawai'i 96777

In-depth and ongoing coverage of the land, the people and the issues that affect the present and the future of our Big Island Communities.

1 year (12 issues) \$12 Sample Copy \$1.50



Coffee Times

P.O. Box 1092 Captain Cook, HI 96704
(808) 326-7637

With the addition of four new pages to this month's Coffee Times, advertising space is now available for as low as \$35/month.

To reserve space call 326-7637.

GREAT DINING AT THE OCEANFRONT OF KONA INN SHOPPING VILLAGE

Famous Seafood Specials, Steaks, Chicken,
Pasta and lots more... Starting at 13.95

Steak & Lobster \$18.95

Live Maine Lobster & Mahi Mahi \$21.95

326-2555

5:30 to 10:00 p.m.



FISHERMAN'S LANDING

Seafood, Oysters, Shrimp, Clams, Fish,
Salads, Burgers, Sandwiches starting at \$5.95

Specials: \$ 7.95

Butterflied Shrimp & Mahi Mahi Combo
Hibachi Chicken & Fried Shrimp

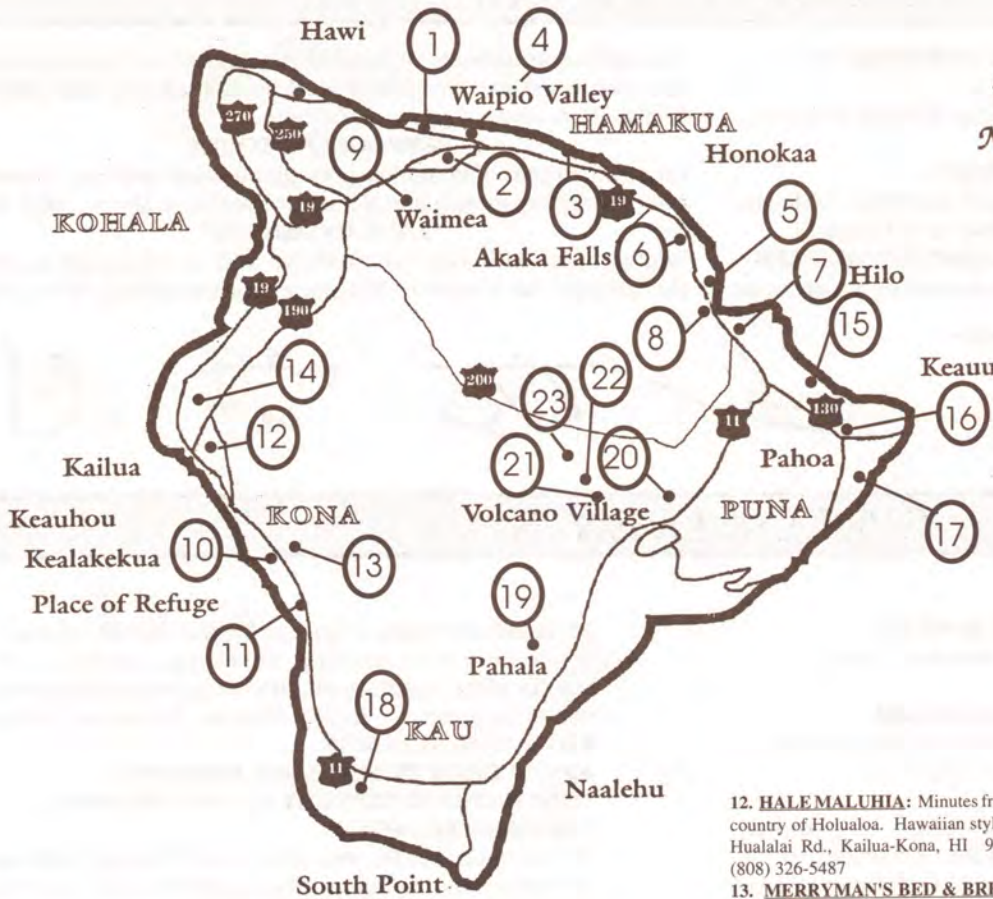
326-2555

OPEN 11:30 a.m. to 10 p.m.



CAPTAIN'S DECK

Big Island Bed & Breakfasts



Denotes Hawaii Island Bed & Breakfast Association

HAMAKUA REGION

- 1. **HALE KUKUI:** Overlooking Waipio Valley, each unit has a full bath, living room, kitchen and large lanai. P.O. Box 5023, Kukuihaele, HI 96727 (808) 775-7130
- 2. **MOUNTAIN MEADOW RANCH:** Minutes from Waipio Valley & Waimea, scenic pastures, majestic trees, immaculate rooms, TV/VCR, sauna, M/C & Visa. P.O. Box 1361, Kamuela, HI 96743 (808) 775-9376 1-800-535-9376
- 3. **SUDS ACRES:** Wheelchair Access, Macnut farm, indoor pool, cozy cottage on slopes of Mauna Kea, kitchen. P.O. Box 277, Paaui, HI 96776 (808) 776-1611; 1-800-735-3262
- 4. **WAIPIO WAYSIDE:** Step back in time to a 1938 sugar plantation home. 5 unique bedrooms. P.O. Box 840, Honokaa, HI 96727. (808) 775-0275 1-800-833-8849

HILO REGION

- 5. **HALE KAI:** 4 star B & B overlooking beautiful Honolii surfing beach and Hilo Bay. All private baths, cable TV, ocean front views, pool & jacuzzi, full breakfast-quiet area. Guests treated as family. Chosen among top 100 B & B's in USA and Canada. Rates: \$80 to \$98. Call or write Evonne or Paul 111 Honolii Pali, Hilo, HI 96720. (808) 935-6330 Fax (808) 935-8439
- 6. **HALELAMALANI:** (House of Heavenly Light) Vacation rentals serenely situated 7.5 miles north of Hilo, 1,000 feet up on the Hamakua Coast w/mountain, ocean & bay views. Daily, weekly rates. P.O. Box 430 Papaikou, HI 96781 (808) 964-5401 1-800-238-8BED.
- 7. **HALE OPANAWEA:** Guest cottage on a lush tropical 9 acre estate in Hilo. King bed, color cable TV, glass fireplace, petite kitchen, twin beds in living area. Continental breakfast provided. Accommodates 4. HCR-1 Box 1-A, Hilo, HI 96720 (808) 959-7432 Fax (808) 982-9091.
- 8. **WILD GINGER INN:** Nonsmoking Inn with jungle garden & stream room includes Hawaiian breakfast overlooking scenic Hilo Bay. Walk to old Hilo town, shops and restaurants. 100 Pueo St., Hilo, HI 96720. 1-800-882-1887 Mainland or (808) 935-5556 Hawaii

KAMUELA KOHALA REGION

- 9. **KAMUELA'S MAUNA KEA VIEW:** Popular private suite w/rate below Kamuela motel room. Fireplace, equipped kitchen, deck panoramic view, telephone, TV. P.O. Box 6375 Kamuela, HI 96743 (808) 885-8425.

KONA REGION

- 10. **B & B AT KEALAKEKUA BAY:** Private secluded peaceful estate, ocean/coastal views, private rooms/private baths. Also available, 2 bedroom 2 1/2 bath house. Walk to beach, snorkel, watch whales/dolphins. P.O. Box 1412, Kealakekua, HI 96750 (808) 328-8150 1-800-328-8150.
- 11. **DA THIRD HOUSE:** Quiet, peaceful studio. Private entrance & lanai. Unobstructed ocean view. Minutes away from sandy beaches, best snorkeling. All amenities. P.O. Box 321, Honaunau, HI 96726. (808) 328-8410.

12. **HALEMALUHIA:** Minutes from Kailua Village and Airport yet secluded in the beautiful coffee country of Holualoa. Hawaiian style home with couple + breakfast lodging from \$50-\$75. 76-770 Hualalai Rd., Kailua-Kona, HI 96740 (808) 329-5773 (808) 329-1123 (808) 963-3300 Fax (808) 326-5487

13. **MERRYMAN'S BED & BREAKFAST:** Lovely tropical retreat just minutes away from the Captain Cook Monument at Kealahou Bay. This beautifully decorated cedar home is situated on an acre of lush grounds, has open beams, wood floors, antique furniture, and wonderful ocean views. Choose from four charming guest rooms with either an ocean or garden view. A delightful Hawaiian breakfast is complementary. P.O. Box 474, Kealahou, HI 96750 (808) 323-2276, 1-800-545-4390.

13. **THREE BEARS BED & BREAKFAST:** Cedar home with ocean views, private baths, micro and fridge. 72-1001 Puukala St., Kailua-Kona, HI 96740 Phone/Fax: (808) 325-7563

PUNA REGION

14. **NA HALA O KE KAI:** Comfortable quiet ocean side accommodations with private entrance, private bath, coastline vista and delicious continental breakfast. Also available: charming plantation style cottage in Volcano Village. HCR 2, P.O. Box 9591, Keauu, HI 96749 (808) 966-4384.

15. **OHIA INN:** Charming and very private 1 bedroom cottage nestled on a two acre estate in lush tropical rainforest. Refrigerator stocked with food for breakfast and of course 100% pure Kona coffee two miles outside of old Pahoa town near Lava Trees State Park and minutes from ocean. Private suites start at \$60. P.O. Box 544, Pahoa, HI 96778 (808) 965-6212 1-800-455-3803.

16. **CARSON'S KOPOHO COTTAGE:** Great snorkeling and unique lava tidal pools, fully equipped 2 bedroom oceanside cottage. P.O. Box 503, Volcano, HI 96785 (808) 967-7683; 1-800-845-LAVA.

SOUTH POINT REGION

17. **BOUGAINVILLEA BED & BREAKFAST:** Private bath & entrances, pool, spa, hike, bike, secrets of Hawaii. P.O. Box 6045, Ocean View, HI 96704 (808) 929-9221; Fax (808) 929-7089

18. **WOOD VALLEY:** Glimpse old Hawaii, secluded plantation home, pasture and garden, home grown breakfast, 100% Kona Coffee, unique outdoor tub and steam bath, lomi lomi massage available, near volcano, black & green sand beaches. P.O. Box 37, Pahala, HI 96777. (808) 928-8212 1-800-854-6754.

VOLCANO REGION

19. **HALE OHIA COTTAGES:** Private cottages on immaculate historic estate unmatched garden setting, fireplace, hot tub, private bath. P.O. Box 758 Volcano, HI 96785 (808) 967-7986

20. **CHALET KILAUEA - THE INN AT VOLCANO:** Elegant, country living, Theme rooms, Tree House, Jacuzzi, TV, Fireplace, Library, Afternoon Tea and a 2-course gourmet breakfast. Incomparable! Rates: \$75-\$175. P.O. Box 998, Volcano Village, HI 96785 (808) 967-7786, 1-800-937-7786 Off Island

21. **CARSON'S VOLCANO COTTAGE:** Secluded, perfect romantic getaway. Beautiful grounds, hot tub private baths. P.O. Box 503, Volcano, HI 96785 (808) 967-7683; 1-800-845-LAVA.

23. **LOKAHI LODGE:** Newest and lowest-priced luxury Bed & Breakfast in Volcano. A blend of modern convenience with country charm. Each carefully appointed guest room exudes a warm feeling of aloha, delicately and beautifully furnished for your pleasure. With comfort as a priority, your room has two extra-long double beds, a private bath and a private entrance. P.O. Box 7, Volcano, HI 96785 (808) 985-8647, 1-800-457-6924.

October On The Big Island

ON GOING EVENTS:

THE HISTORY OF CATTLE RANCHING ON THE BIG ISLAND

Photo exhibit on display all month at the Kona Historical Society, Kealahakua 323-3222.

HILO FARMER'S MARKET

Arts, Crafts, Produce every Wednesday and Saturday in downtown Hilo at the corner of Kamehameha Ave. and Mamo St.

PU'UHONUA O HONAUNAU NATIONAL HISTORICAL PARK

First Wednesday of every month features an evening program in

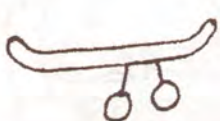
the park's amphitheatre consisting of speakers and presentations about cultural histories of Hawaii. Call 328-2288 or 328-2326 for information about this month's topic

PETROGLYPH TOURS

Free guided tour of Waikoloa petroglyph fields with Raz Gurrobat every Saturday morning at 8 a.m. at the Kings Shops. 883-8949

"LAVA UNLIMITED"

Photography exhibit by Sabina Marquand on display all month at the Volcano Art Center in Volcanoes National Park, 967-8222

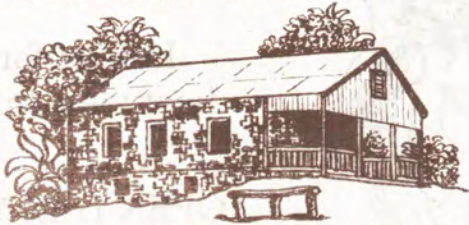


SPECIAL EVENTS:

- 1 **GRAND OPENING OF HALE O' KAUWEHI**
Hawaiian Arts, Crafts, Clothing, Honokaa Town, 775-0255
- 2 **HISTORICAL JEEP TOUR TO KAAWALOA**
Presented by the Kona Historical Society, Kealahakua, interested participants should call 323-3222
- 4-29 **"ART BY THE FOOT"**
An innovative concept in a juried art show. 2nd annual mixed media display by Island artists. Coordinated by Linn Avattar. Reception on October 9, 11:00 a.m. to 2:00 p.m. Upstairs Gallery, Wailoa Center, Hilo 933-4360
- 4-29 **DAMASCUS AQARIAN**
This artist shows abstraction has the greatest potential for the forceful expression of cosmic ideas. Fountain Gallery, Wailoa Center, Hilo 933-4360
- 5 **AFTER DARK IN THE PARK PRESENTS: "HUALALAI: HA`AHEO I KA MALIE A KAMA`AINA PERSPECTIVE"**
Hannah Kihalani Springer is kama`aina of Ka`upulehu, Kona `Akau and a fifth generation occupant of Kukui`ohiwai, the family home on the slopes of Hualalai. Join us as Hannah, a lifelong student of the natural and cultural histories of Hawa`i, will share her insights of the dynamic and diverse mountain of her homeland: Hualalai. Kilauea Visitor Center Auditorium, Volcanoes National Park, 7:00 p.m., 967-7184
- 8 **MAJOR CONCERT TO BE ANNOUNCED**
Akebono Theater, Pahoa, 965-9943
- 10 **SHAKUHACHI**
Concert by Riley Lee, Sunday, October 10, Kilauea Lodge, Volcano Village, Afternoon Brunch follows, 967-8222
- 10 **"MIRROR GAME"**
Preview performance by Theater Reaching Youth (TRY) 3:00 p.m., Aloha Theatre, Kainaliu 322-9924
- 16 **"MIRROR GAME"**
Performance by Theater Reaching Youth (TRY) 3:00 p.m., Aloha Theatre, Kainaliu 322-9924
- 16 **JENNIFER MULLER/THE WORKS**
This dynamic contemporary dance company has been a fixture in the dance world for 18 years. Firing the public's imagination since 1974, this internationally acclaimed
- 11-member troupe is known for the excellence and exuberance of its dancing, the energy, passion and insight of its repertory and the virtuosity and individualism of its dancers. Kahilu Theatre, Kamuela, 8:00 p.m. \$20 & 17.50, 885-6017
- 19 **AFTER DARK IN THE PARK PRESENTS: "THE NATURAL HISTORY OF PU`UWA`AWA`A: PAST AND PRESENT"**
The ahupua`a of Pu`uwa`awa`a on the slopes of Hualalai in North Kona, is famous for its diverse native forests as well as recently discovered fossil remains of previously unknown and extinct species of birds. Wildlife biologist Jon Giffin's presentation will address these as well as the development of the Pu`uwa`awa`a State Wildlife Sanctuary. Kilauea Visitor Center Auditorium, Volcanoes National Park, 7:00 p.m., 967-7184
- 22-24 **"BIG RIVER"**
See Aloha pages 20 & 21, Aloha Theatre, Kainaliu, 22nd & 23rd at 8:00 p.m. 24th at 2 p.m. 322-9924
- 26 **AFTER DARK IN THE PARK PRESENTS: "HUALALAI: ALL IS NOT QUIET ON THE WESTERN FRONT"**
Hualalai Volcano has erupted every several hundred years for the last 100,000 years, the last time in 1800-1801 when lava flowed rapidly to the sea from five vents on the northwest rift zone. Dr. David Clague, Scientist-in-Charge of the USGS Hawaiian Volcano Observatory, will outline the geologic history of Hualalai as determined by mapping surface lava flows as well as marine geology. Clague will also assess the present-day geologic hazards of the area. Kilauea Visitor Center Auditorium, Volcanoes National Park, 7:00 p.m., 967-7184
- 28-31 **"BIG RIVER"**
See Aloha pages 20 & 21, Aloha Theatre, Kainaliu, 28th to 30th at 8:00 p.m. 31st at 2 p.m. 322-9924
- 30 **IRONMAN**
- 31 **ANNUAL HALLOWEEN "TREAT" GEOFFREY HANSEN MAGIC SHOWS**
First show at 6:00 p.m. for CHILDREN followed by annual TRICK OR TREAT in Pahoa Town, sponsored by local merchants. Second magic show for ADULTS ONLY starts at 8:00 p.m. Akebono Theater, Pahoa 965-9943.

Kona Historical Society Museum

The Kona Historical Society, a non-profit organization, was founded in 1976 to collect, preserve and disseminate information about the history of the Kona districts on the island of Hawaii. It maintains a growing reference library and archive containing photographs, manuscripts, maps and oral histories as well as a small collection of artifacts.



Now on display: The History Of Cattle Ranching On The Big Island, 200 years. (Photo Exhibit)

Museum Hours

9:00 a.m. - 3:00 p.m. Weekdays

Closed All Holidays

ADMISSION BY DONATION

Located on Highway 11, one-half mile south of rural Kealahou.

P.O. Box 398 Captain Cook, HI 96704

TELEPHONE (808) 323-3222



PILOT A CESSNA AIRCRAFT AROUND THE BIG ISLAND

Under the supervision of a certified flight instructor

See Hawaii's:
VOLCANOES~WATERFALLS~VALLEYS

Cool, comfortable, spacious and smooth
The best visibility and stability plus a full intercom system on board for a truly custom trip.

Aircraft Tours, Rentals, Charters and Aerial Photography also available

326-2288

R E S E R V E D
CTR A 101
ADMIT ONE

KAHILU THEATRE

885-6017

Parker Ranch Shopping Center, Kamuela, HI

SATURDAY, OCTOBER 16, 1993
JENNIFER MULLER/THE WORKS

This dynamic contemporary dance company has been a fixture in the dance world for 18 years. Firing the public's imagination since 1974, this internationally acclaimed 11-member troupe is known for the excellence and exuberance of its dancing, the energy, passion and insight of its dancers. "Imperative to see them. Inevitable to see them again and impossible to forget them."

O ESTADO DE SAO PAULO - Brazil.

Ticket Prices: \$20 & 17.50

SEC ROW SEAT
CTR A 101
R E S E R V E D

BODY GLOVE

KONA'S PREMIUM SNORKEL CRUISE
SNORKEL • SCUBA • SNUBA



- Snorkel Gear & Instruction
- Continental Breakfast
- Deli Buffet Lunch
- Flotation Water Toys
- Full Service Bar (no host)
- Water Slide

326-7122

**\$20 OFF
Adult Fare**

**\$5 OFF
Under Water
Video**

\$20.00 Off per adult couple or \$10.00 off any single adult. Only \$44.00 per person with this coupon.

Capture your vacation with a custom Body Glove Video. This coupon entitles you to \$5.00 Off a Kona Down Under Production.

This coupon must be presented at time of purchase. Offer good through 12/31/94. Not valid with any other discounts or promotions.

KONA BIKE TOURS

GUIDED BIKE TOURS OF HISTORIC KEALAKEKUA BAY

Stops at:
Painted Church,
Kona Coffee Mill,
Kealakekua Bay,
Place of Refuge
Plus:
Snorkeling
and Picnic Lunch



MOUNTAIN BIKE RENTALS

We carry the full line of

IRONMAN
merchandise

Plus all of your running,
swimming & biking needs

Located in the Kona Inn Shopping Village

329-2294



KAILUA-KONA
HAWAII



KONA'S FAVORITE
CANTINA

Specializing in:

Fresh Seafood
&
Mexican Favorites

Join us for the
best view in town.

OPEN DAILY
serving food 11 am to 10 pm
CANTINA open until 12 am

PEDROS SUNSET HOUR

4 to 6 pm daily

\$ 1.50 Single Margaritas & Draft Beer
Free Chips & Salsa

75-5669 Alii Drive, Kailua-Kona, Hawaii 96740
Across from Kailua Pier (808) 326-2840



I S L A N D

LAVA JAVA

Bake & Brew Bistro, Espresso Bar

Visit our Bake Shop, Coffee Shop &
Tropical Dreams Ice Cream Parlor

Oceanfront at Sunset Plaza

on Alii Drive Kailua-Kona

Free Parking

327-2161

HAWAII'S ONLY

Submarine Adventure

Come descend into the ocean world with us
as we explore 25 acres of Kona's natural coral
reef and hundreds of tropical fish. Life under
the Hawaiian ocean will fascinate you!

FREE ATLANTIS CAP

with purchase of dive, one cap per coupon
(offer expires 10/31/93)

Hourly dives daily.
Departing from
King Kamehameha's
Kona Beach Hotel
on Alii Drive in
Kailua-Kona



For reservations please call or see nearest activity desk

(808) 329-6626