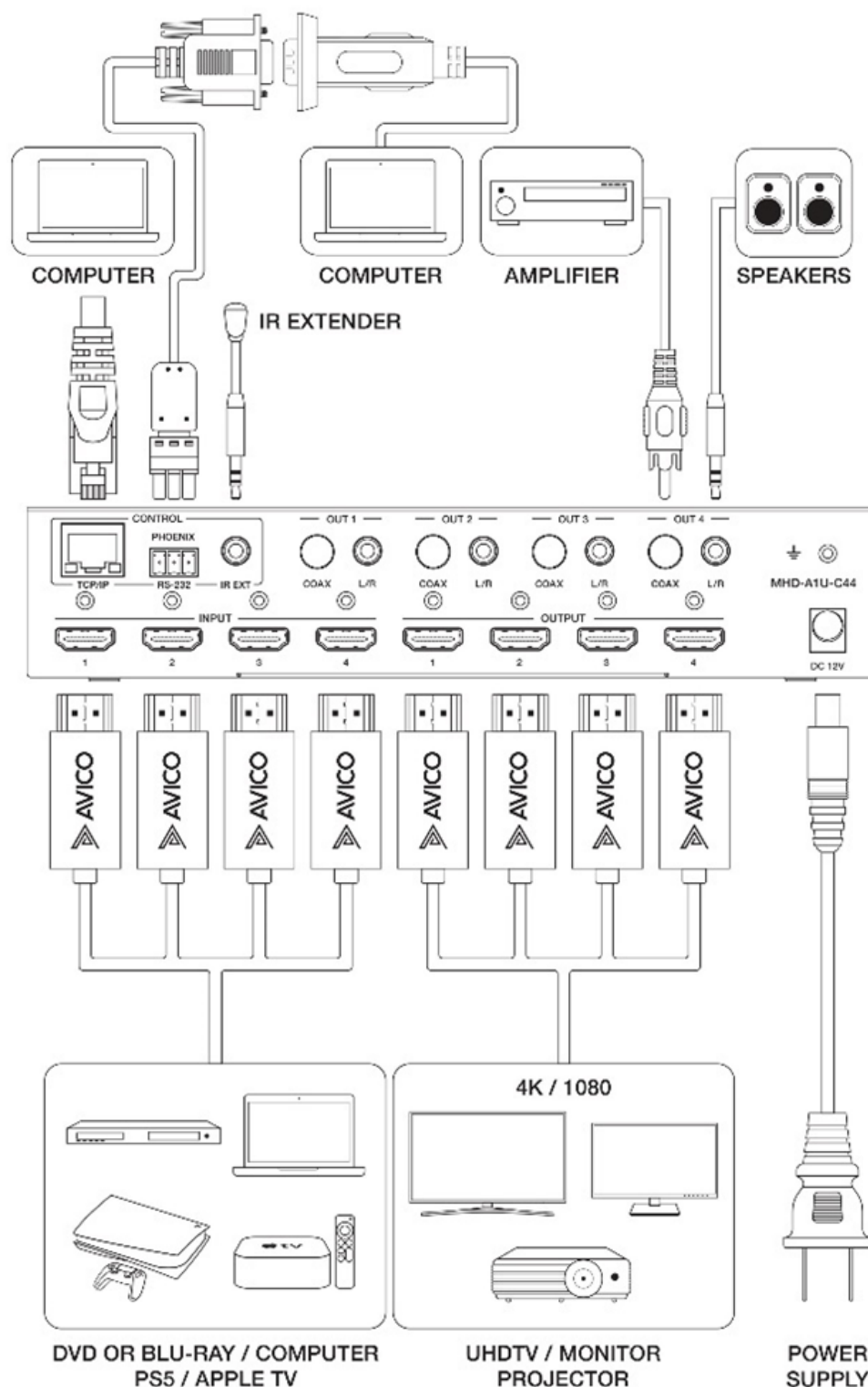


## User Guide: 4x4 MHD-A1U-C44

This guide will help you control the front panel buttons of your device, find its IP address, access its WebGui, and more. By following these steps, you should be able to use your device with ease. If you have any further questions or issues, please refer to the user manual or contact customer support for assistance.

### CONNECTION DIAGRAM:

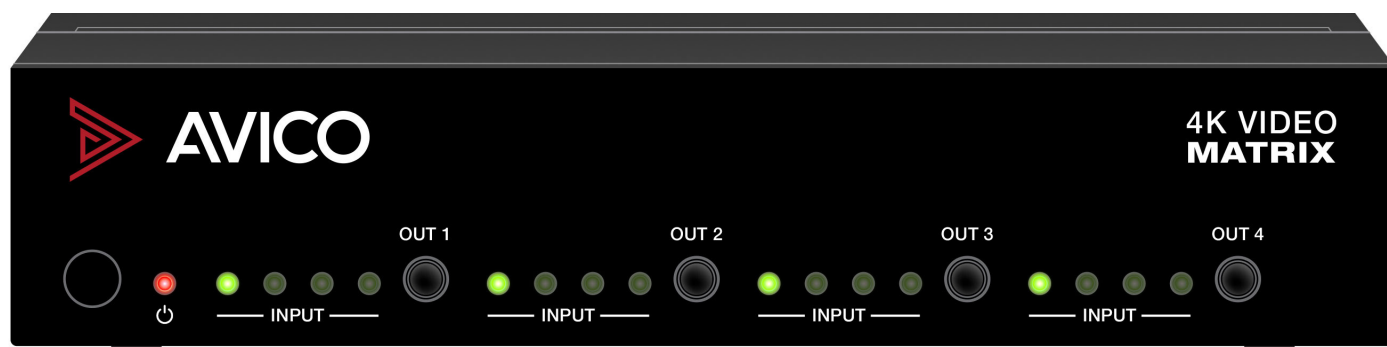


## HOW TO CONTROL FRONT PANEL:

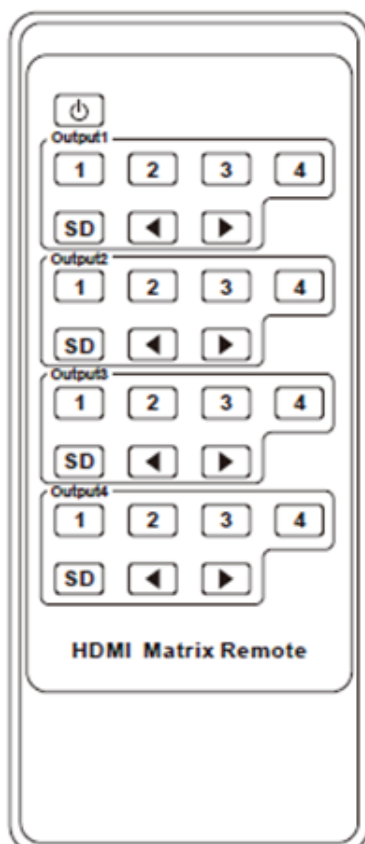
**Red Light:** The red light indicates that the Matrix is active and ready to operate.

**Green Lights:** The green lights show which input source is selected for each output.

Each output has its own dedicated button that cycles between all four input sources. Press the button to select the desired input for that output.



## HOW TO USE REMOTE:



### **1,2,3,4:**

Press the corresponding number on the remote control to select the desired input source for the desired output.

### **SD:**

Press the "SD" button on the remote control to switch to downscale mode (1080p) or bypass mode (default) on the selected output.

### **< >:**

Use the "< >" buttons on the remote control to select the next or last input source for the selected output.

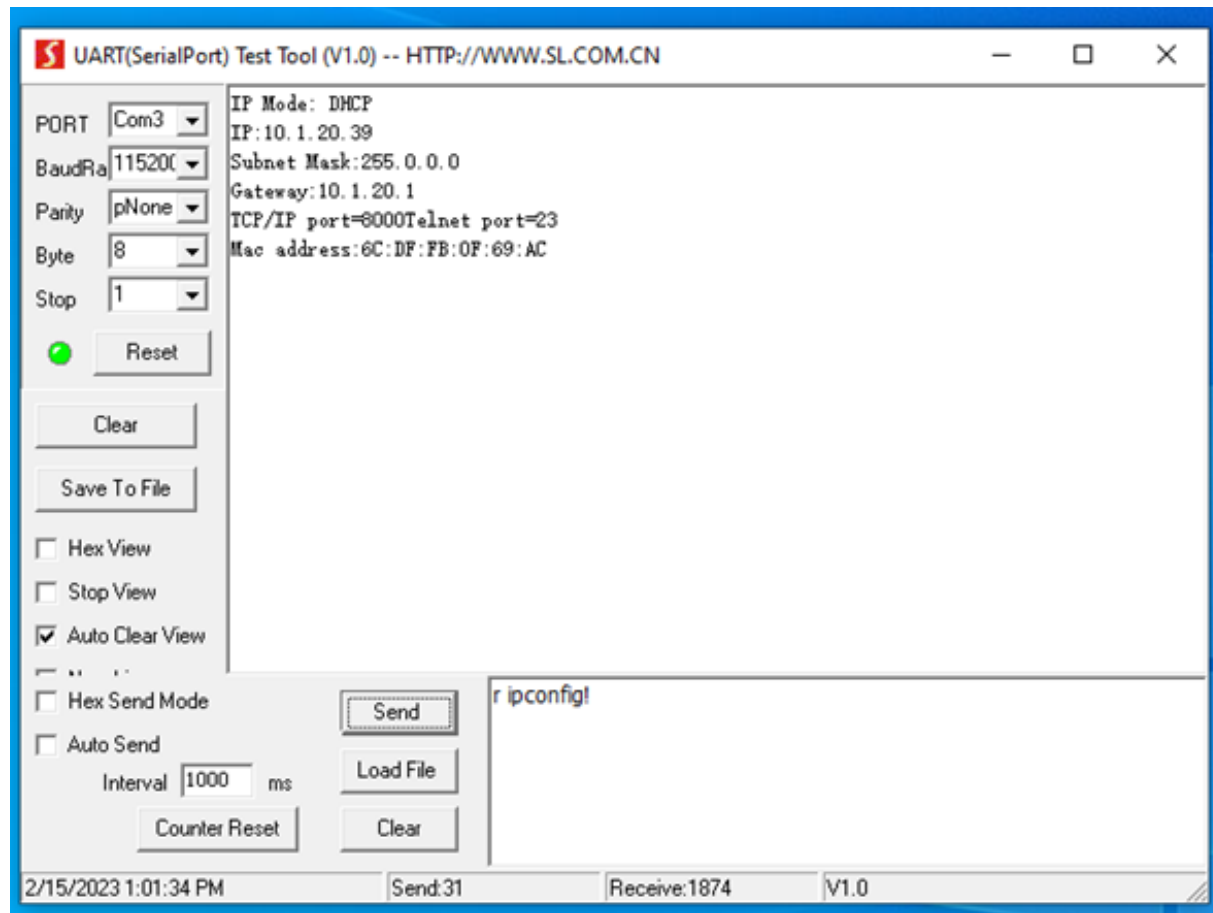
## HOW TO FIND IP ADDRESS

### Method 1:

Use an IP scanner application like Advanced IP Scanner to identify the Matrix on your network. The Matrix name usually appears as “IP Module” but it can appear as a different name.

### Method 2:

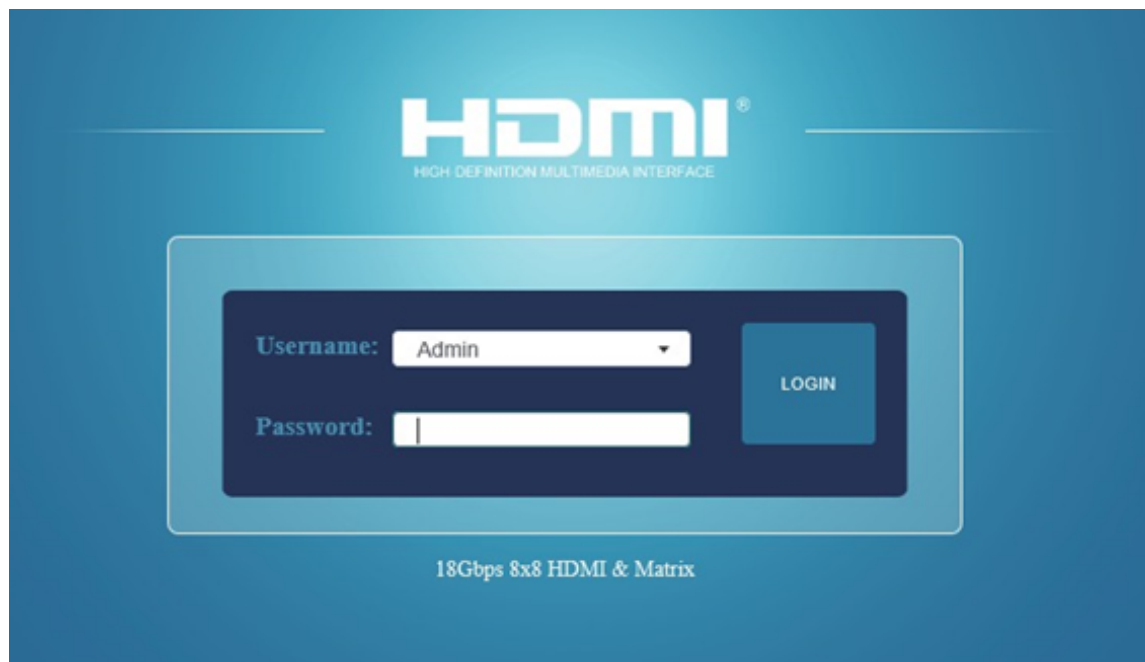
Use an ASCII Command tool (On Windows 10) like CommWatch to use the RS232 command “r ipconfig”.



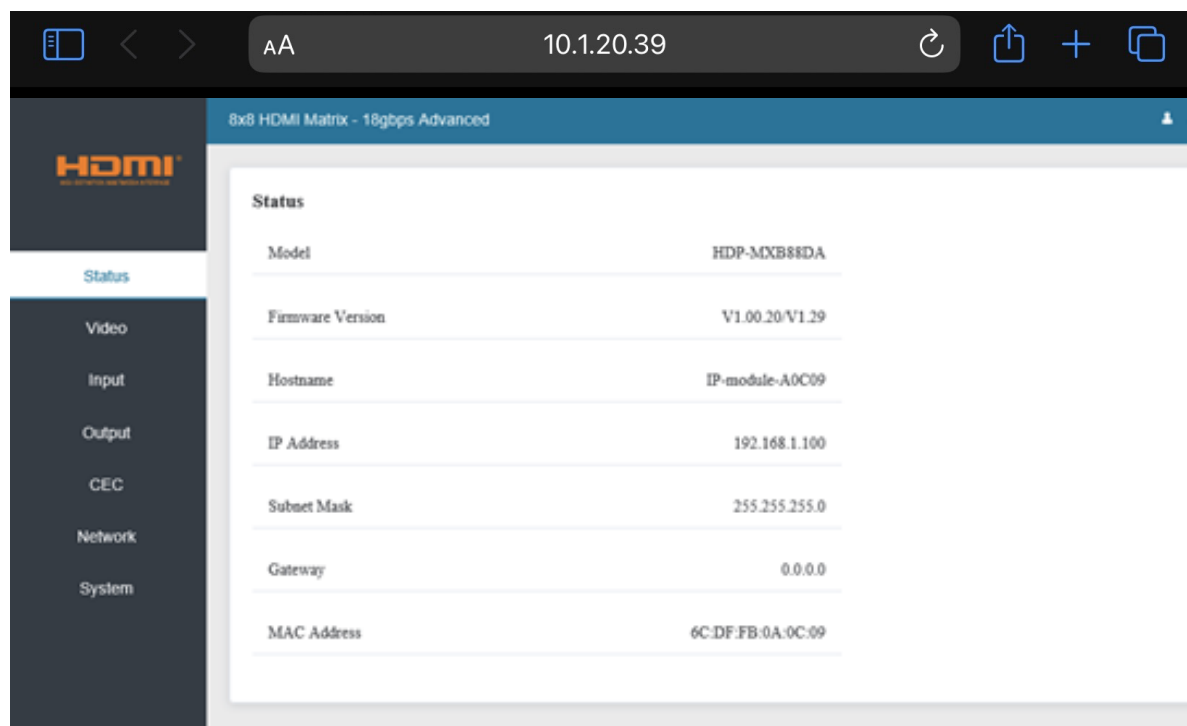
## Accessing the Web GUI:

The WebGui grants access to a wide range of options, including resolution controls, audio controls, video selections, preset video selections, and many more.

Once you know the IP address of your Matrix, open a web browser on the same network and type in the IP to the browser. Default Password is "Admin"

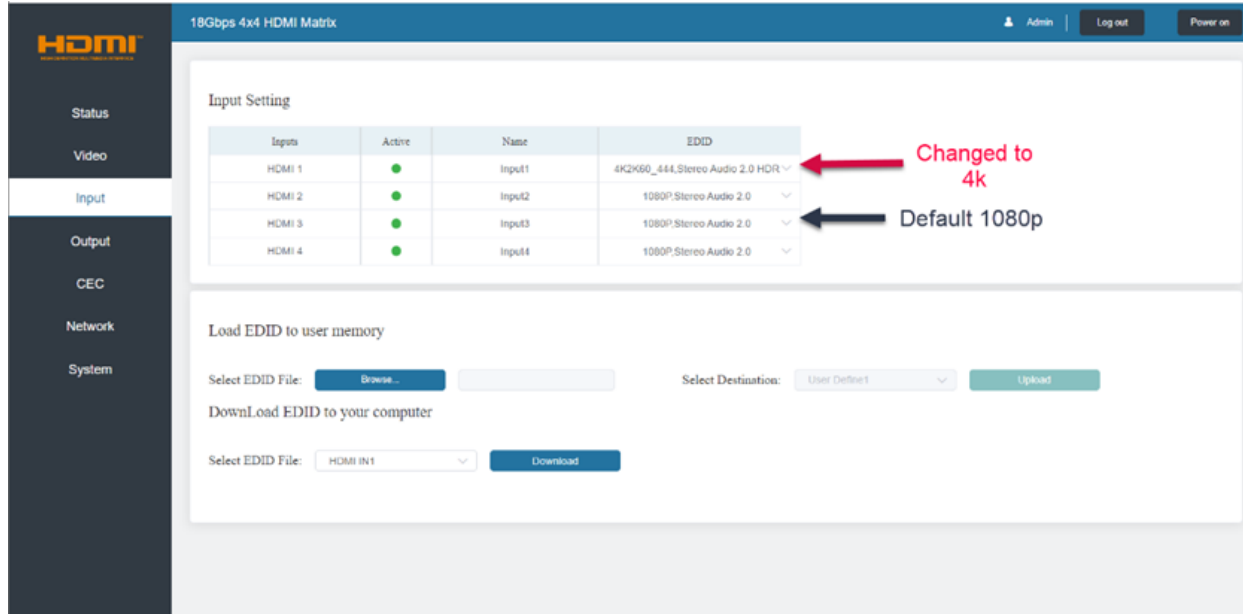


WebGui can be accessed by any device with browser, for example, iPad Safari Browser.

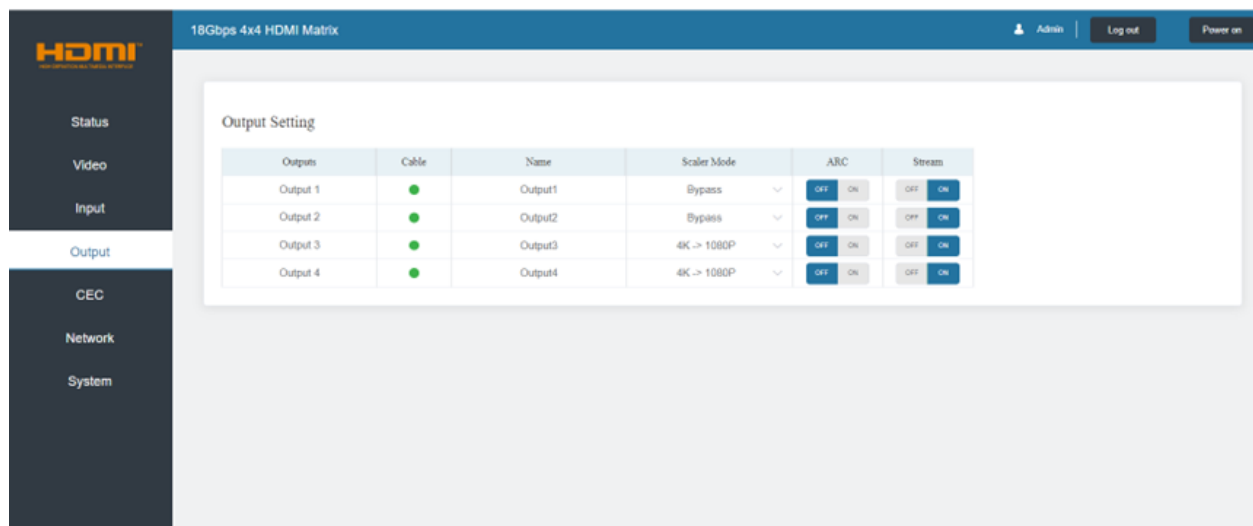


## DISPLAYING 4K CONTENT

By default, the Matrix preloads all inputs as 1080pP to automatically display on all outputs. Access the WebGui to set the desired EDID settings under Input Settings.



Once the input is set to the desired EDID, in this case, 4K, it will push through 4K on all outputs. 1080pp outputs will display a blank screen. Press [SD] on the remote to downscale to 1080p or in WebGui Outputs Settings, set the desired output to downscale [4K->1080pp].



## AUDIO:

Each output has a dedicated 3.5mm Aux & coax port.

If you connect Speakers to Output 1 3.5mm Aux/Coax these speakers will only output the audio of whatever input is being transmitted to output 1.

## AUDIO OUTPUT

