

AQUA-IONIZER PRO®

ionHealth® Pro

Water Ionizer



Owner's Manual

Read Carefully Before Initial Use

Retain Manual For Future Reference

Made in Korea

v. 1.04

TABLE OF CONTENTS

Safety Instructions & Symbols	1
Parts List	8
Ionizer Overview	9
Control Panel Overview	10
Installation	11
How To Use	14
Cleaning Functions	16
pH & ORP Testing Notes	17
Understanding the pH Presets	18
Maintenance & Storage	19
Replacing The Filters	20
Troubleshooting	21
Warranty	23
Return Policy & Damage Liability Waiver	24
Technical Specifications	25

SAFETY INSTRUCTIONS & SYMBOLS

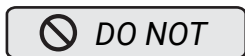
Safety Instructions & Symbols:



Avoid the specified action as it may destroy the unit, cause serious injury or even death.



Avoid the specified action as it may destroy the unit or cause serious injury.



Do NOT perform the specified action.



The specified action is very important and must be completed for the unit to function properly.



Most City Water In The USA Works Great

Source water requirements - Please pay attention to the source water requirements outlined below prior to installing and operating your water ionizer.

- The source water entering the water ionizer must meet applicable local standards that make it suitable for drinking. Despite the unit's built-in water filter, it should NOT be attached to a water source not meant for drinking. The purpose of the carbon filters is to remove residual chlorine, other chemicals, and odors from water that is already suitable for human consumption. The filter is NOT intended as the sole purification source for the water ionizer - use in this manner will void the warranty, reduce the unit's performance, shorten it's operational life, and could jeopardize the health and life of anyone drinking water that could potentially be harmful.
- The water flow entering the water ionizer from the source water connection must be 0.8 liters per minute or faster for the water ionizer to operate properly. If the water flow is too slow, the water ionizer may not be able to induce water flow and therefore cannot start normally. If your municipal or other water source flows slower than 0.8 liters per minute, you may need to install a booster pump.
- The pressure of source water that goes into the unit must be under 43.5 pounds per square inch (psi)/.03 megapascals (MPa) for your water ionizer to operate properly and to avoid damaging the unit. If you water pressure is higher than this, you should install a water pressure reducer to lower the source water pressure before it's fed into your water ionizer.

SAFETY INSTRUCTIONS

 CAUTION

**If you have an R/O (Reverse Osmosis) System
or low pH WELL WATER,**


- or -

If you are not on city or municipal water, call our
customer service number for filter options.

Questions Please Call:

1-888-601-5886

 IMPORTANT

 DO NOT

Do NOT Install your water ionizer in any of the following locations:

- Near an open flame, in direct sunlight or anywhere temperatures could exceed 140° F (60° C);
- Near flammable liquids;
- Outdoors or any place where the unit could be directly exposed to rain, snow, high winds, or other weather elements;
- Saunas or other facilities with unusually high levels of humidity; or
- Any spot where water or other liquids might drop on the unit's exterior.

 WARNING

 IMPORTANT

To avoid electrical shock and fire hazards:

- Be sure the electrical plug is seated fully in the power outlet.
- Do NOT bend, pinch, clamp, place heavy objects upon, modify, or otherwise damage the unit's power cord or plug.
- Do NOT plug the unit in if the cord, plug, or outlet is damaged.
- Do NOT drag the unit by its power cord or plug.
- Contact a qualified electrician immediately if the cord or plug becomes damaged.

SAFETY INSTRUCTIONS



WARNING



IMPORTANT

- Do NOT share the electrical outlet used for your ionizer with other electrical appliances.
- Use only alternating current 110V power supply. Exceeding the rated power rating may damage the unit and/or cause a fire.
- Do NOT attempt to plug in, unplug, or otherwise operate your water ionizer if your hands are wet.
- Do NOT submerge the unit in water nor use alcohol, flammable, toxic, or corrosive chemicals when cleaning this unit. You should clean the exterior of the unit by using a slightly damp cloth with a small amount of dish washing liquid.
- If the unit falls into or is doused by water or any other liquid, immediately remove from power outlet.
- This appliance is not intended for use by people (including children) with reduced physical, sensory, or mental capabilities, nor by individuals with otherwise limited knowledge, skills, and abilities regarding the operation of electrical appliances in general and water ionizers in specific unless they have received supervised and/or written instruction (such as this manual) in their safe operation.
- Young children should NOT attempt to operate the unit.



CAUTION



DO NOT

- Do NOT place your water ionizer closer than 3 feet from your oven, furnace, space heater, or any other active heat sources or devices.
- Do NOT disassemble, attempt to repair, or modify your water ionizer. This should only be done by a professional service technician.



CAUTION

- If you have existing water hoses from a previously owned water ionizer or other water dispensing, filtration, or purification devices, these hoses should be discarded and the new hoses provided with your new water ionizer should be used instead.

SAFETY INSTRUCTIONS



WARNING



IMPORTANT

Health Issues: If any of the following apply to you, please consult your physician before drinking or continuing to drink ionized alkaline water.

- You have kidney disease, renal failure, and/or have difficulty discharging/eliminating potassium in which case you should generally NOT ingest alkaline water;
- You are receiving medical treatment for another disease or illness;
- You are chronically ill or otherwise in very poor health.



CAUTION



IMPORTANT

Beginning to Drink Alkaline Water: Your body may take a while to get used to drinking alkaline water.

- When drinking alkaline water for the first time, dispense the water using your unit's Alkaline 1 setting and consume only small amounts, 8 to 16 ounces (0.25 to 0.5 liters) per day.
- Continue this practice for at least 2 weeks prior to advancing to your units higher pH value Alkaline 2 setting at which time you should try to consume 32 to 64 ounces (1 to 2 liters) of alkaline water per day.
- Attempting to drink higher pH value water before your body becomes used to alkaline water may result in temporary digestive, dermatological, or other symptoms.



CAUTION



DO NOT

Alkaline Water & Medications: Do NOT drink alkaline water prior to, with, or immediately following taking tablets or other oral medications. Instead, use your unit's "Purified Water," i.e., filtered but not ionized, water setting. As a general rule, you should not consume alkaline water within 45 mins. to one (1) hour either before or after taking medication. This is to avoid "time release" issues, unless approved by your medical professional.

SAFETY INSTRUCTIONS

IMPORTANT

Storing Ionized Water: Under normal temperature conditions, alkaline water stored properly in a sealed, insulated container will retain its ionized properties for at least 24 hours and up to 48 hours when refrigerated. Alkaline levels may remain for longer periods.

- Do NOT store ionized water in metal containers. It should only be stored in plastic, glass, or ceramic containers.
- Exposing the container to direct sunlight may shorten the period that alkaline water is able to retain its ionized properties.

CAUTION

Cosmetic Water Use: When using mildly acidic water from your water ionizer's Acidic 1 setting for skin care, as an astringent or for hair care, please discontinue use and consult your physician if you develop a skin rash or other allergic reaction.

CAUTION

IMPORTANT

Pets & Ionized Water: Dogs, cats, and other mammals may benefit from drinking ionized water. However there are a few simple rules:

- Especially if your animals have any preexisting health problems, consult your local veterinarian before giving them alkaline water and/or following any negative health reaction to the alkaline water.
- Start them off slowly on Alkaline 1 setting and keep them there for at least 2 weeks prior to moving to the Alkaline 2 setting. As a general rule, it's probably best not to exceed 9.0 pH.
- Do NOT give your pet alkaline water within 45 mins. to 1 hour before or after meals. Use the "Purified Water" setting instead. The higher pH levels can neutralize their stomach acids making it more difficult for them to absorb nutrients.
- As with humans, Do NOT give your pets ionized water within 45 mins. to 1 hour prior to, with, or after taking medication. Doing so can alter the intended absorption rate of the drug.
- While the Acidic 1 water setting can be used to treat your pet's minor wounds and improve its skin and coat, you should check carefully for any allergic reactions or skin irritation.

SAFETY INSTRUCTIONS

CAUTION

Fish & Aquariums: Unless you are an experienced aquarium owner or qualified aquatic life professional, do NOT introduce ionized water to your aquarium without knowing the precise alkaline or acidic water settings applicable to your particular fish species. Fish may become ill or die if their water's pH balance is changed or changed too quickly.

Exotic Pets: Lizards, snakes, turtles, frogs, and other reptiles and amphibian species vary dramatically in the pH levels to which they are suited. Please contact your vet or pet shop owner prior to giving them ionized water.

Plants: Different plants thrive on water of varying pH levels. For example, some plants prefer more alkaline environments while others perform better in more acidic ones. Consequently, before watering your plants with ionized water, you should determine specifically the type of pH balance most conducive to the growth of your specific plants.

IMPORTANT

Flushing Residual Water: Because a certain amount of water remains trapped in your water ionizer's filters and tubing, you should briefly run water through your ionizer prior to each use.

- In order to remove any residual water left in your water ionizer, you should generally dispense water from the unit for approximately 5 seconds before each use.
- If you have not used the unit for at least 2 days, you should dispense water from the unit for at least 3 minutes before using it.


WARNING


IMPORTANT

Tainted & Leaking Water: If any of the following occurs, stop drinking water from your ionizer immediately and contact Real Spirit USA at (888) 601-5886.

- Taste or pH testing levels reveal that water dispensed from the unit, which should be alkaline, is coming out acidic;
- Residual water appears to be dripping from the unit.

SAFETY INSTRUCTIONS

 **CAUTION**

 **DO NOT**

Continuous Operation: Do NOT exceed the following maximum continuous operation time frames for your water ionizer:

- Do NOT operate the unit in any Alkaline or Acidic setting for more than 10 minutes continuously.

 **WARNING**

 **IMPORTANT**

Consumable Water Limits: Though extremely high or low pH water can be used for purposes besides drinking, e.g. cooking food, cosmetic purposes, or household cleaning, etc. humans, unless directed by their physician for some unusual medical reason, should not generally drink water higher than 10 pH nor lower than 7 pH.

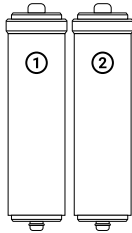
PARTS LIST



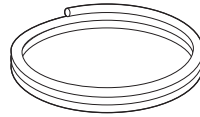
Note: As a result of minor technical or aesthetic changes, some ionizer parts may appear slightly different in appearance or color than depicted on product packaging or in this manual. Should this occur, the part (s) remain usable and should be installed and used in accordance with this product manual.



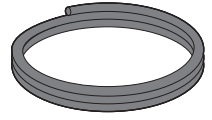
Water Ionizer



Filters
(Pre-Installed)



Tap water Inlet
(White Hose)



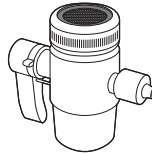
Acidic Outlet
(Grey Hose)



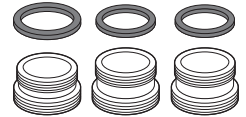
Manual



Flexible Metal
Spout



Diverter



Adapters & Washers



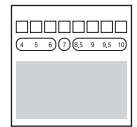
Dust Filter



pH Reagent



Test Vial



pH Range
Table



Wall Mount Template



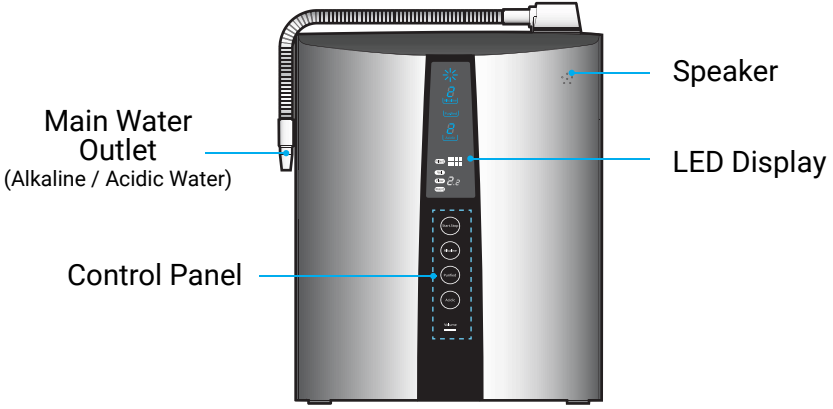
Screws



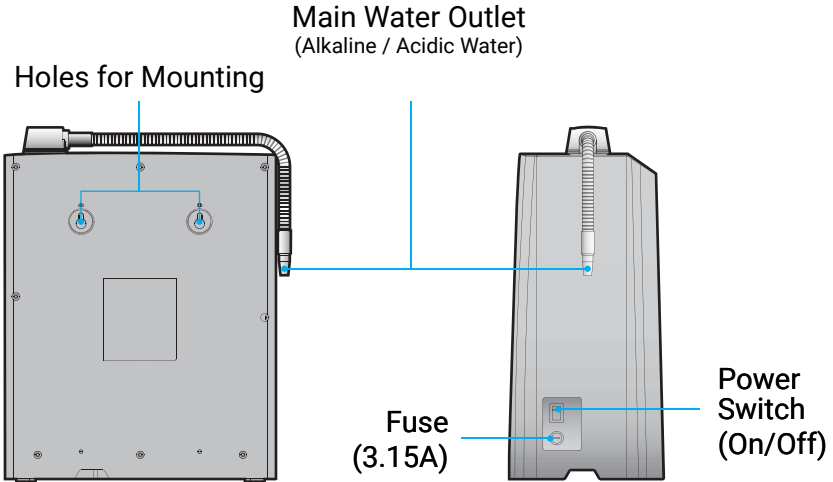
Wall Anchors

IONIZER OVERVIEW

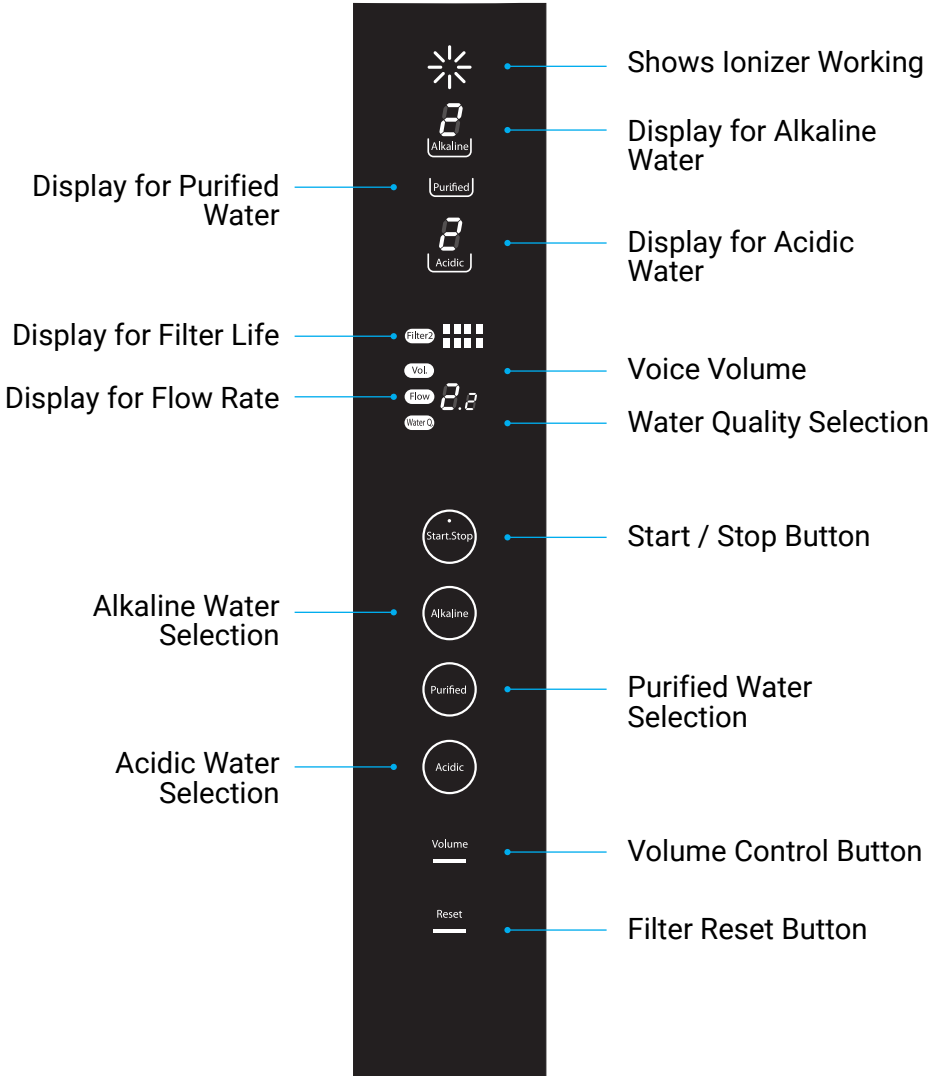
Front



Rear & Side

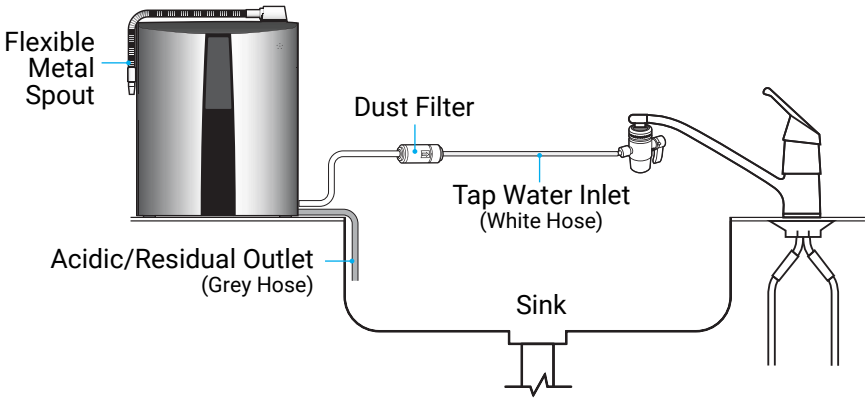


CONTROL PANEL OVERVIEW



INSTALLATION

Connection Diagram - Countertop installation



! IMPORTANT

For Installation Videos Visit:
www.aquaionizerpro.com/pages/install

SCAN WITH YOUR SMART PHONE



! INSTALLATION HELP

If you have any questions regarding installation visit:

www.aquaionizerpro.com/pages/install

Or give us a call

888-601-5886

INSTALLATION

! IMPORTANT

For Installation Videos Visit:
www.aquaionizerpro.com/pages/install



SCAN WITH YOUR SMART PHONE

! IMPORTANT

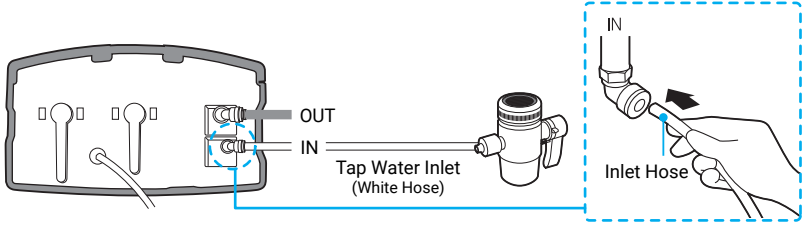
Before plugging in your water ionizer, confirm the power outlet is 110V/60Hz.

1. Turn off water to faucet.
2. Locate and unscrew metal mesh aerator from your faucet. The part on the end where the water comes out.
3. Attach metal water diverter to faucet. You will need to find the included adapter that fits your faucet.
4. Remove the nut from the side of the diverter. Place the nut on the 1/4" inlet hose, then the hose to the diverter. Finally, screw the nut back onto the diverter to seal the hose in place.
5. Remove the plugs located on the bottom of the ionizer at the IN and OUT ports.
6. Attach the other end of the hose to the water supply inlet under the unit, marked IN.
7. Connect the grey drainage hose to the water outlet under the unit and place the other end in the sink to drain.
8. Turn on the water and let the new unit flush or run for 3 minutes with water running through the unit.
9. Turn power on and enjoy the water.
10. Flush generated water for 2-3 minutes after installation is completed.
11. Check for leaks.

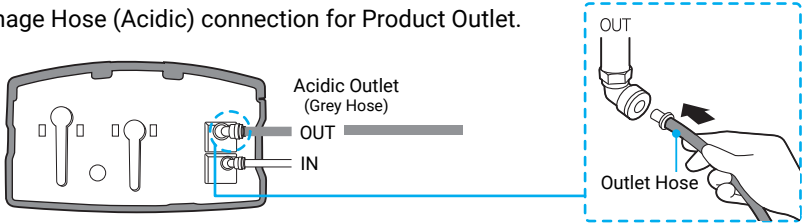
INSTALLATION

Connecting Hoses to Ionizer Inlet & Outlets

1/4" hose connection adapter connection for water inlet

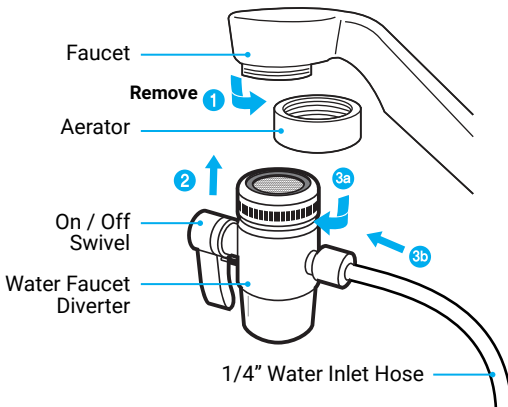


The Drainage Hose (Acidic) connection for Product Outlet.

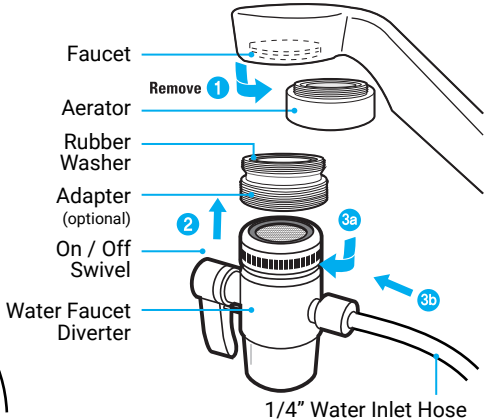


Connection to Faucet Diagram

Faucet Type: External Threads



Faucet Type: Internal Threads

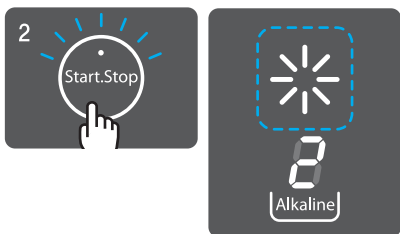


HOW TO USE

Alkaline Water Generation



1. Touch the “Alkaline” button to select the alkaline level. Whenever you touch it, the alkaline level is changed.



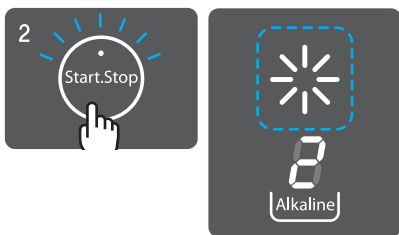
2. When the number of desired level is selected, touch the START / STOP button and enjoy alkaline water.

NOTE: Alkaline 2 set up when factory delivered

Purified Water Generation



1. Touch the “Purified” button to select the purified water, and purified LED will be displayed.



2. Touch the START / STOP button and enjoy purified water.

HOW TO USE

Acidic Water Generation

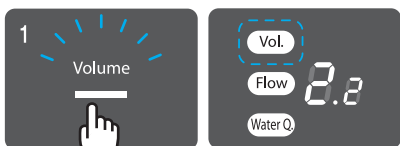


1. Touch the "Acidic" button to select the acidic level. Whenever you touch it, the acidic level is changed from 1 to 2.

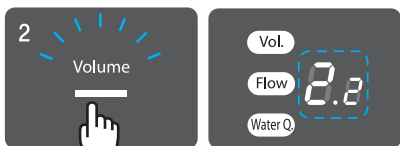


2. When the number of the desired level is selected, touch the START / STOP button and enjoy acidic water.

How to Adjust Voice Volume (Countertop Installations Only)



1. Touch the "Volume" button to adjust the volume and the volume LED will flash.



2. Whenever you touch the "Volume" button, the number on the right side of the volume button will change from 0 to 5. 5 is the highest volume level.

CLEANING FUNCTIONS

Automatic Cleaning

Whenever the water ionizer is in any of the 5 alkaline modes or either of the 2 acidic modes, ending water flow, either by turning off the faucet or faucet diverter valve will cause your water ionizer to reverse electroplate polarity and start the automatic cleaning process. This process lasts approximately 10 seconds while the water expels from the unit.

Enhanced Cleaning

- A. In addition to the auto-cleaning function, your water ionizer also has an extended Enhanced Cleaning function designed to help reduce the buildup of calcium, magnesium, and other chemical and mineral deposits on the unit's electroplates. The Enhanced Cleaning function is triggered after approximately every 40 liters of water that has been dispensed.
- B. When enhanced cleaning is required, upon you pushing the Start/Stop button to stop alkaline/acidic water production, the machine will say "Cleaning is activated". The water will continue to flow, the unit will make a beeping chime, and a countdown from 30 will show on the screen.
- C. DO NOT drink the water during the enhanced cleaning, it will be acidic.
- D. When the cleaning finishes the water will stop on it's own.
- E. NEVER unplug the unit or attempt to carry out other water ionizer functions while the unit is in enhanced cleaning mode. Doing so may damage your water ionizer.

PH & ORP TESTING NOTES

Impact of Environmental & Other Factors on pH - Different regional, environmental, and testing factors such as the quality, pH level, Total Dissolved Solids (TDS), source water temperature, and the flow rate through the water ionizer can all cause variations in the pH level of the water dispensed from your water ionizer. For example, the referenced pH preset values were derived from 68°- 77° F (20° - 25° C) source water with a neutral pH of approximately 7.5, containing 100-150 parts per million of TDS flowing at 2L (0.5 gal) per minute.

DO NOT

DO NOT use litmus paper to evaluate pH. Most commercially available litmus paper is a much less accurate tool for measuring pH than the ionizer specific pH reagent (testing liquid).



**Would You Like a Free* pH Test Kit?
Call 1-888-601-5886**

***Only valid within 60 days of initial purchase**

ORP Testers

Caution using store bought ORP Testers. Many of these testers are designed for Fish Tanks and Swimming Pools only. These NON-Professional ORP testers are not designed to be accurate after -100 ORP.

As a general rule, if your Ionizer is producing Alkaline Water it is also producing negative ORP.

Every ionizer is tested with a Laboratory Certified ORP Tester before it leaves our factory to ensure proper functionality.

UNDERSTANDING THE PH PRESETS

Your water ionizer has 8 pH presets: 5 Alkaline, 1 Purified, and 2 Acidic. Each is shown below, along with its control panel icon, factory set pH range, and the general application(s) of each setting.

IONIZER LEVELS

ALKALINE
Cooking
pH over 10.5 | ORP -800mV

LEVEL 5

This setting is ideal for cooking since alkaline water dramatically improves the flavor of veggies, rice, pasta, and soups. Water from this setting is also perfect for washing fruits and veggies, removing not only dirt and bacteria, but also chemical pesticides and fertilizers far more effectively than regular tap water.

ALKALINE
Making Tea or Coffee
pH over 10.0 | ORP -380mV

LEVEL 4

Alkaline water at this setting enhances the flavor, color, and aroma of both coffee and tea.

ALKALINE
Effective Antioxidant
pH 9.5 | ORP -280mV

LEVEL 3

This setting supercharges your water with antioxidants as it ionizes. This antioxidant-rich water is microclustered, making it easier for your cells to absorb, increasing hydration. These antioxidants also battle free radicals that damage your cells.

ALKALINE
Everyday Drinking
pH 9.0 | ORP -160mV

LEVEL 2

Drinking 2 or more glasses daily of alkalized water acts as a powerful antioxidant and can help offset the effects of eating highly acidic foods such as meats, egg yolks, fried foods, processed foods, coffee, and aids in hydration.

ALKALINE
Beginner or Sensitive Stomach
pH 8.5 | ORP -50mV

LEVEL 1

If you are new to drinking ionized alkaline water, you should start by drinking small amounts, at this level daily for a week or two before progressing to the higher setting since it may take your body a short while to adjust to the higher alkaline water setting.

PURIFIED
Medication or Infant Formula
pH & ORP from Water Source

LEVEL 0

This setting filters, but does not ionize water. It should be used when taking pills or other medications. Consuming ionized water within 1 hour of taking medications can affect a drug's absorption rate. This option is also ideal for use in baby food preparation, since ionized water may be harmful or difficult for children under the age of one year to digest.

ACIDIC
Cosmetic
pH 6.5 | ORP -450mV

LEVEL 1

Acid water from this setting makes a great skin exfoliant, removing dead skin cells and acts as an astringent which tightens the skin, removes fine lines and wrinkles, and helps fight acne and blemishes without harmful chemical residue. Shampooing and rinsing your hair with water from this setting enhances shine, manageability, and reduces breakage.

ACIDIC
General Cleaning
Max. pH 2.7 | ORP +900mV

LEVEL 2

Highly acidic water from this setting makes an extremely effective cleaning, disinfecting, and antibacterial agent. It is particularly suited for cleaning kitchen and bathroom surfaces such as counter tops, sinks, showers, mirrors, and linoleum and tile floors without harmful chemicals and toxins.

NOTE: pH & ORP readings may vary by +/- .06 and +/- 100mV respectively, subjected to nature of inherent water source, piping condition, water inflow rate, chlorine concentration and filter usage. Indicated pH readings are obtained based on a pH 7.5 source water. All pH and ORP readings are attained based on quantitative sampling basis. pH and ORP readings are subjected to natural deprecation.

MAINTENANCE & STORAGE

Maintenance (Cleaning the Electrolysis Cell)

- Clean the electrolysis cell to extend the lifetime of the platinum electrode by producing acidic water.
- We recommend customers clean the electrolysis cell by activating the acidic water about two times per month for 10 minutes, at a low flow rate.

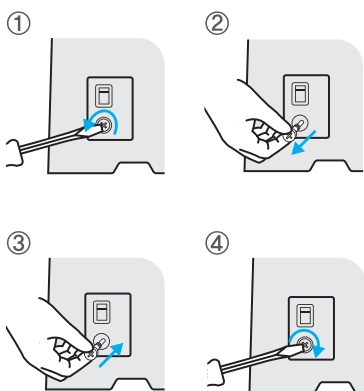
How to Store the Unit

- Must be moved only after power is turned off.
- When storing, the ionizer should be clear of water.
- Outlet and inlet hose should be kept clean.
- Unplug when not in use for a long time.
- Do not store in a humid place.

Replacing the Fuse

 CAUTION

Unplug unit from power source before replacing fuse.



Fuse is located on the lower side of the body.

1. Fuse can be removed if rotated counterclockwise with a screwdriver.
2. Please remove fuse with finger.
3. Insert the new fuse (240V, 3.15A).
4. Tighten the fuse, rotating it clockwise with a screwdriver.

NOTE: When changing the fuse, please make sure to unplug the power cord first. Not doing so may cause electric shock.

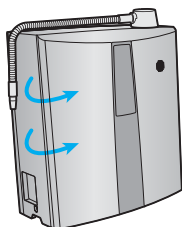
REPLACING THE FILTERS

! IMPORTANT

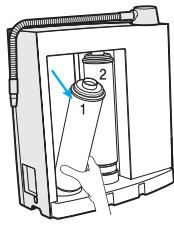
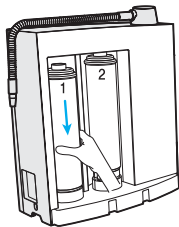
Keep the ionizer upright during filter change to prevent water from entering the ionizer and damaging the internal electrical components.

Replace the filters in the following order after unplugging the power source and closing the source water valve.

1. Open the front door cover as pictured

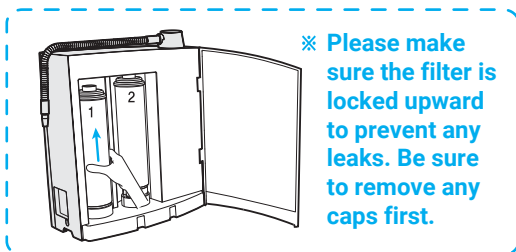


2. Press the top part of the filter down and pull it towards you. Filter 1 and filter 2 will be removed in the same way.

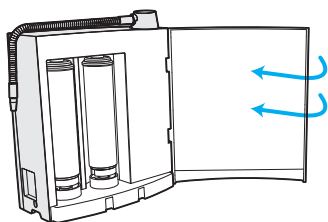


NOTE: Remove caps from the top and bottom of the new filters.

3. Insert a new filter into the base hole and press the filter down, then align with the top. Filter 1 and filter 2 will be mounted in the same way.



4. Close the front door.



Resetting Filter Life

1. After replacing filters, hold reset button on front of unit until filter blinks.
2. Press and hold reset until all filter bars are full.
3. Press Start/Stop to save.

5. Flush generated water for 2-3 minutes after Installation is completed and look for leaks.

TROUBLESHOOTING

Problem	Check	Solution
No power to the unit or the On/Off switch does not illuminate the unit.	Is the power cord properly connected?	Plug in properly and power on unit.
	When the unit is receiving power, but the On/Off switch doesn't work, check the fuse.	Change the fuse, please see pg 19 for more information.
There is power to the unit, the screen illuminates, but there is sporadic or no water generation.	Is the water supply cut off valve open?	Open the water supply cut off valve.
	Check ALL water supply connections.	Connect all hoses properly.
	Water supply hose bent or folded?	Ensure the hose is free from any constrictions.
	Low water pressure? (Below 0.7 Kg/cm ³)	The unit cannot be used in areas of lower water pressure, contact your local representative.
	No source water supply or frozen?	Wait until water supply resumes.
	Filter Blocked?	Replace filter. Check the caps.
No alkalinity?	Check if any figure appears on the screen.	See how to adjust machine according to feed water quality.
Low alkalinity?	Do you reside in an area of high water hardness?	Alkalinity will be different depending on water hardness in the area and source water quality.
	Oversupply of water?	Reduce the amount of source water supply flow. (Normal 2/3 bars of 5)
	Not enough drainage?	Contact your local representative.
Stops in the middle of operation?	Has continuous operation time passed 10 minutes?	The unit automatically stops after 10 minutes of continuous use. Please wait for the button on the screen to illuminate. The unit will then be ready to use.
Leakage from filter	Is it installed properly?	Replace the filter. If the problem persists, then contact (888) 601-5886 and stop operation.
	Any leakage in main body?	

TROUBLESHOOTING

Problem	Check	Solution
Is there a strange odor or water tastes different?	Unused for a long time?	Flush water for more than 3 - 5 minutes. If the problem persists, replace the filter.
	Excess alkalinity?	Increase the water supply by opening the supply valve.
	Filter change overdue?	Replace filter.
Water does not look clean.	Is something deposited at the base of the container?	Calcium or other minerals can be present depending on the area. This water is safe to drink

Any other questions or concerns?

Call Us: (888) 601-5886

Or email us: Help@RealSpiritUSA.com

WARRANTY

Limited Lifetime Warranty

Aqua-Ionizer Pro® and its parent company, Real Spirit USA, Inc., offer a Limited Lifetime warranty on all its water ionizers to the original consumer purchaser under the following terms and conditions:

Aqua Ionizer Pro®, Aqua Ionizer Deluxe® 5.0 and Deluxe 7.0 models; a) For the first 5 years from the date of original purchase, we warrant the unit to be free from defects in materials and workmanship under normal operation (not including wear and tear use), we will repair or replace any defective part(s) or, at our discretion, replace the entire unit free of charge. b) After the first 5 years, we continue to stand behind your purchase for as long as you own it. Should the unit need to be repaired, we will provide the replacement parts at no charge to you. You will be responsible only for the cost of labor to replace the parts. Third party or reseller purchases are excluded from all warranties. Should the estimated cost to repair the unit exceed 30 percent (30%) of the unit's original suggested retail price, we will provide you the customer with an entirely new replacement unit of equal or greater original value for 30 percent (30%) of the current suggested retail price.

VIP Lifetime (NO TIME LIMIT) Warranty

By purchasing the ionHealth® Pro Water Ionizer, your warranty period is extended beyond the 'Limited Lifetime Warranty' to a 'No Time Limit Warranty' on parts and labor or a full unit replacement should your ionHealth® Pro fail at any time now or in the future while in use by the original purchaser.

Whether in the first 5 years or subsequently, upon discovery of a product defect, you should immediately notify Real Spirit USA, Inc via telephone or email the exact problem you are having to the best of your knowledge. If it is determined to need additional diagnostic inspection, then we will provide you a product return authorization and shipping instructions. You should ship or deliver the product to the designated service location, accompanied by your name, address and telephone number, proof of purchase date and a description of the defect. The customer is responsible for the cost of shipping the unit to the service facility. Third party or reseller purchases are excluded from all warranties. However, following repair or replacement, Aqua Ionizer Pro will cover the cost of shipping the unit back to the consumer within the contiguous United States. Customers outside the contiguous United States must also cover the cost of return shipping following repair or replacement.

The warranty does NOT cover or include unusual wear, use of 3rd party equipment, damage resulting from accident or unreasonable use, failure to use the correct water supply or follow cleaning procedures as outlined in the owner's manual, and also does not include replacement filters nor other disposable parts and supplies (Examples are a cracked screen, broken swivel spout, cut power cord etc.). *Unreasonable use also includes using the unit outside of North America and in countries where the voltage may be higher than 110/120 Volts, which is the normal operating range of our products. **Additionally the warranty will become VOID should the case seal be broken and the tamper system activated which shall indicate the unit cabinet was opened for purposes other than authorized by the company. It should be noted that any electronic unit should be serviced only by an authorized service technician duly certified by Real Spirit USA, Inc. All warranties are non-transferable and remain registered to the original purchaser.

**Note: Please contact us for special 220/240 volt international models which may be available for use outside of North America.

**This warranty and return policy may be updated or amended at any time.
Please visit our website for the most up-to-date information.

RETURN POLICY & DAMAGE LIABILITY WAIVER

Return Policy

In order to receive a FULL REFUND (excluding rush shipping) you must contact our Sales and Customer Service department and return the items within our 30-Day satisfaction period from date of purchase. You can request a RA# to return all items to Real Spirit USA 320 S Rock blvd Ste 210 Reno NV 89502 within 30 days of ordering your product. Upon receipt of your complete original order you will receive a full refund (minus shipping if any, or used consumables such as filters in some cases, please discuss with your customer service specialist for additional details). Note: Outside of this 30 day period some additional reasonable charges may apply. Ultimately, your satisfaction is our goal.

Water Damage Liability Statement and Waiver

Aqua Ionizer Pro® water ionizers and filters are covered by our Limited Lifetime Warranty* or our VIP Warranty*. Aqua-Ionizer Pro® or its parent company Real Spirit USA, Inc accepts no liability, nor offers any warranty or remedy for damages of any kind in regard to water damage caused or reported to be caused by leaks from hoses, fittings or directly from any of our products.

Further, Aqua Ionizer Pro® does not warrant or accept any liability in regard to installing our Ionizer units, hoses, or additional valves or filters. Any such installation is at the sole responsibility of the owner or the third party installer, plumber or contractor.

The customer/user by purchasing our products accepts full responsibility for ensuring that the proper acceptable water pressure is present at the time of installation (as stated in the owner's manual).

Water pressure is controlled by the supplier or the home owner and cannot be controlled or guaranteed by Aqua Ionizer Pro or its affiliates.

Once you have installed your unit, it is recommended that connections and connectors are inspected by the owner on a regular basis. It is also recommended that if you are away from the installation for longer than a 24 hour period that you turn off the water supply to your Water Ionizer system as well as turn off the supply power to your unit. This is a standard procedure for all home appliances connected to a water supply

Basic care and maintenance by the owner/user of this equipment is entirely the responsibility of the purchaser-owner/user, as Aqua Ionizer Pro assumes no responsibility for misuse, faulty installation, or variations in water pressure or quality. Other than what is expressed in our products warranty, Aqua Ionizer Pro assumes no additional liability for these foregoing statements or other 'Acts of God'.

By acceptance of delivery, and the installation the Aqua Ionizer Pro products (filters, ionizers, and accessories) you agree to hold Aqua Ionizer Pro and Real Spirit USA, Inc harmless for any water damage caused by leaking water or for any other reason.

*See warranty on previous page.

**This warranty and return policy may be updated or amended at any time.
Please visit our website for the most up-to-date information.

TECHNICAL SPECIFICATIONS

Model Name	ionHealth® Pro
Rated Voltage	110-120 Volts; 60 Hz
Power Protector	Fuse 3.15A
Weight	11 Pounds, 5kg
Packaging Unit	1 Ea,
Optimal Water Pressure	72 psi
Water Volume Generated	2 - 3 Liters / Min (0.53 gallons - 0.79 gallons/min)
Cleaning	Automatic Cleaning System (See Page 16 for more info.)
Filter Lifespan	Approximately 8 - 12 Months

Residential Use Only

The above specifications are subject to change without notice or performance improvement.

AQUA-IONIZER PRO®

Questions?

(888) 601-5886

Produced and distributed exclusively by:



REAL SPIRIT
an innovative products group

Aqua Ionizer Pro® is a division of Real Spirit USA, Inc.
320 South Rock Blvd Suite 210 • Reno NV 89502 • Ph (888) 601-5886
www.AqualonizerPro.com • help@realspiritusa.com

© 2024