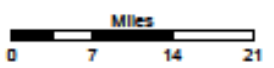
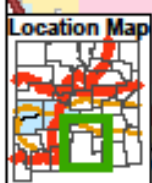
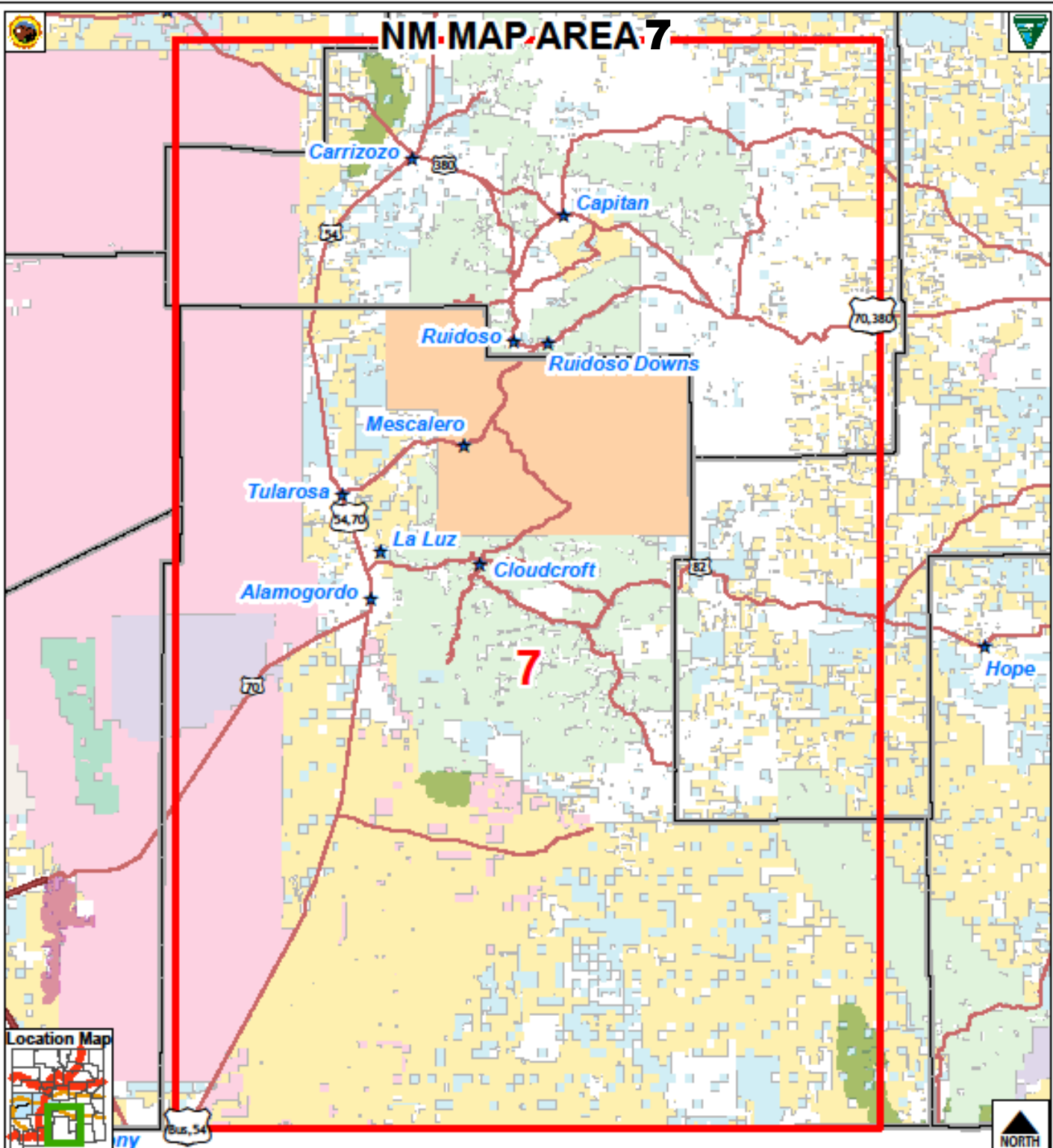


NM MAP AREA 7



User: jzimmer Saved: 4/3/2020 12:31
 Printed: never never Projection: Albers
 Coord System: NAD 1983 Albers
 Scale 1:969,550 Units: Meter

No warranty is made by the Bureau of Land Management as to the accuracy, reliability, or completeness of this data for individual or aggregate use with other data. Original data was compiled from various sources and may be updated without notification.

- | | | |
|-----------------------|-------------------------|---------------|
| ★ Cities | Bur of Land Mgmt | State Park |
| Map Areas | Dpt of Defense | Private |
| Expressway | Fish & Wildlife Service | State |
| Secondary Hwy | Tribal | US Forest Svc |
| Wilderness | Nat Park Service | USDA |
| Wilderness Study Area | | |
| County | | |





Adventure Safely!

Our public lands belong to all of us. Get out and explore!
But first a few ground rules and tips for staying safe:

Most of the public land in New Mexico is remote country. It is accessible from unimproved; sometimes four wheel drive, roads and tracks. Be prepared to be self-sufficient with water, food, shelter, GPS, maps, and recovery tools and skills. There are NO services in these remote areas. Cell phone reception is rare.

Unless driving through on a county, state or federal highway, you must have prior written permission to be on tribal, military, state trust, or private land...even when crossing to get to public lands.

Maps

Maps showing the location of New Mexico public lands in color are available for free download. An index map can be found at: <https://plia.org/pages/new-mexico-blm-public-lands-access-map>. These maps are a good start when looking for the best public lands in New Mexico for dispersed recreation.

Maps with much more detail may be downloaded here: <https://www.blm.gov/maps/frequently-requested/new-mexico/hunting-maps>. These free maps indicate land management status, backroads, terrain, water features, some gates, and other information. These are large downloads and require a strong internet connection. However, once downloaded, these maps may be used without internet.

Dispersed Camping

Camping on public lands, away from developed recreation facilities is free, as long as it does not conflict with other authorized uses or in areas posted "closed to camping," or in some way adversely affects wildlife species or natural resources.

Dispersed campsites are located along unimproved roads and may not be marked. Popular locations can be recognized by the telltale flat disturbed area that has been used as a campsite before. Not all flat spots are sites. If possible, please use existing sites to avoid creating new disturbances.

Dispersed camping is generally allowed on public lands in New Mexico for no more than a period of 14 days within any period of 28 consecutive days. The 14-day limit may be reached either through a number of separate visits or through 14 days of continuous overnight occupation during the 28-day period. After this time period, you must relocate to another site at least 25 miles away. The purpose of this is to prevent damage to sensitive resources caused by continual use of any particular areas.

Camping is prohibited within 900 feet of any developed water source such as a guzzler or watering trough so that the water is accessible to wildlife and livestock. Please do not park your vehicles near these waters or take any actions that would disturb wildlife or livestock from using these waters.