



**EEM**  
ELECTRIC MOTION



*EPURE TRIAL MODELS*





## NEW FEATURES EPURE 2020

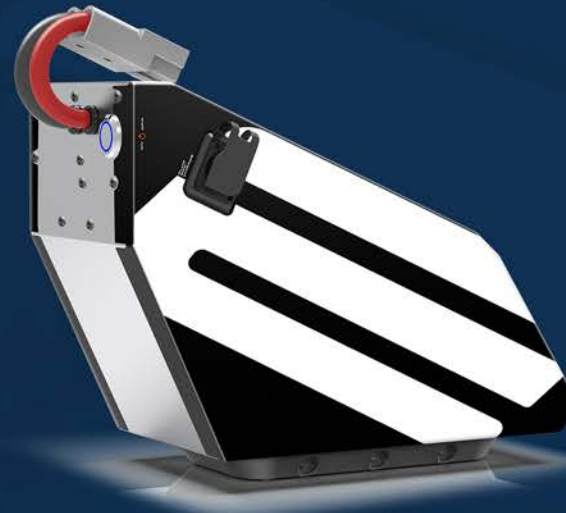


### FRAME

Initially developed for competition, Electric Motion chooses to provide its standard model with a high-end frame made of 15CDV6 steel tubes and micro fused pieces in 25CD4S. The frame itself weighs less than 5kg. All conditions are there to live a breathtaking experience

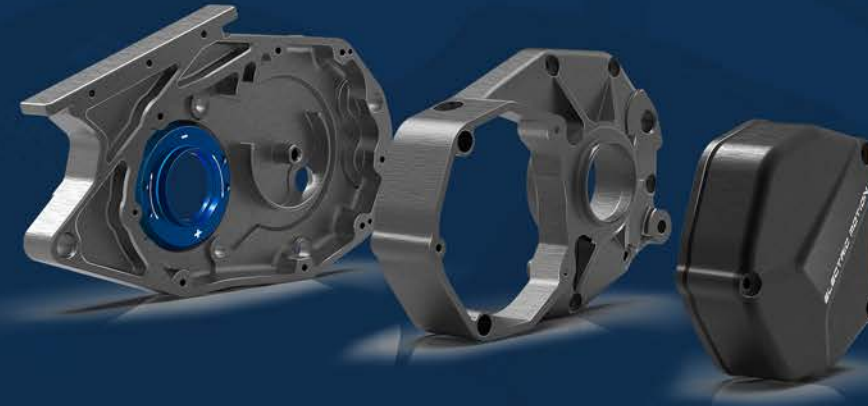
### BATTERY

The new Electric Motion battery pack is more efficient than ever. Its new, last generation BMS (Battery Management System) guarantees the best performance in use and in time. The new battery pack is more compact, lighter, removable and has a 30% longer operating life. It will make you wonder who will be exhausted first: your battery or yourself.



### DESIGN

The art of distinguishing itself, with a line and completely new colors, the Epure is more daring and elegant. With clean details and an original line cut with a scalpel, you have understood the Epure heals his style, his signature.



### DIAPHRAGM CLUTCH

(On Epure Race)

The Epure Race model is equipped with a diaphragm clutch with a hydraulic control, made for competition. The engine flywheel coupled with a set of different balancing weights allows several inertia settings.

Essential system for the high-level competitors, here is what will make them clear the highest obstacles, with a perfect control.

### FORK

(On Epure Sport and Epure Race)

It is one of the most performing forks on the market. This new generation fork, extra-light (weighing 1.5kg less), from the brand M4 Racing Part, has already been tested and approved by the best ...

The M4 Racing Part fork is equipped with new extra light CNC triple clamps.



### ERGONOMICS AND TECHNOLOGIES

The new cockpit gives you all the information you need with only the blink of an eye. Ergonomic map control, remaining battery life on display (in %) for even more riding comfort.



## EPURE LITE 2020

The Epure Lite is the standard model of the EPURE family, but it does benefit of all its technology.

The Lite is good for all those who want to practice trial or ride off-road, with a silent motorbike that requires zero maintenance.

Private individuals, training schools or off-road centers, the Epure Lite will please a large crowd of enthusiasts.



<b>MAX SPEED</b>	<b>RANGE</b>	<b>WEIGHT</b>	<b>TORQUE</b>	<b>ROAD LEGAL</b>
<b>65 KM/H</b>	<b>43 KM</b>	<b>73 KG</b>	<b>600 NM</b>	<b>125 CM<sup>3</sup></b>

### TECHNICAL SHEET

<b>FRAME</b>	15CDV6
<b>FRONT BRAKES</b>	Brake disc 182 mm 4 pistons
<b>REAR BRAKES</b>	Brake disc 150 mm 2 pistons
<b>FRONT RIM</b>	Morad Trial 1.6"x21
<b>REAR RIM</b>	Morad Trial 2.15"x18
<b>TIRES</b>	Michelin X11
<b>FRONT SUSPENSIONS</b>	Tech
<b>FRONT SUSPENSION TRAVEL</b>	175 mm
<b>REAR SUSPENSION</b>	R16V
<b>REAR SUSPENSION TRAVEL</b>	170 mm

### BATTERY

<b>ENERGY</b>	Li-ion
<b>VOLTAGE</b>	50,4 V
<b>CAPACITY</b>	1875 Wh
<b>WEIGHT</b>	10,5 kg
<b>CHARGER</b>	15 A
<b>CHARGING TIME</b>	3h20
<b>LIFE CYCLE</b>	1000
<b>MINI CHARGING TEMPERATURE</b>	0°C

### ENGINE

<b>NOMINAL POWER</b>	6 Kw
<b>PEAK POWER</b>	11 Kw

### DIMENSIONS

<b>SEAT WEIGHT</b>	670 mm
<b>WHEEL BASE</b>	1325 mm
<b>GROUND CLEARANCE</b>	320 mm
<b>FOOTREST HEIGHT</b>	360 mm
<b>WIDTH</b>	825 mm

### SERIES EQUIPMENT

<b>MAPS</b>	3
-------------	---

### OPTIONS

<b>OPTIONS</b>	PRB / PELS Trial training maps Flywheel Charger 25A (2h15)
----------------	---



# EPURE SPORT 2020

Designed for competitors, the Epure Sport is pure performance...  
Power, battery lifetime, torque, speed, weight... the Sport model has never been that improved before.

The Epure Sport proves that an electric motorcycle can be as performing as the best combustion-powered ones. Without any compromise.



<b>MAX SPEED</b>	<b>RANGE</b>	<b>WEIGHT</b>	<b>TORQUE</b>	<b>ROAD LEGAL</b>
<b>65 KM/H</b>	<b>43 KM</b>	<b>70 KG</b>	<b>600 NM</b>	<b>125 CM<sup>3</sup></b>

## TECHNICAL SHEET

<b>FRAME</b>	15CDV6
<b>FRONT BRAKES</b>	Brake disc 182 mm 4 pistons
<b>REAR BRAKES</b>	Brake disc 150 mm 2 pistons
<b>FRONT RIM</b>	Morad Trial 1.8"x21
<b>REAR RIM</b>	Morad Trial 2.15"x18
<b>TIRES</b>	Michelin X11
<b>FRONT SUSPENSIONS</b>	M4
<b>FRONT SUSPENSION TRAVEL</b>	175 mm
<b>REAR SUSPENSION</b>	R16V
<b>REAR SUSPENSION TRAVEL</b>	170 mm

## BATTERY

<b>ENERGY</b>	Li-ion
<b>VOLTAGE</b>	50,4 V
<b>CAPACITY</b>	1875 Wh
<b>WEIGHT</b>	10,5 kg
<b>CHARGER</b>	15 A
<b>CHARGING TIME</b>	3h20
<b>LIFE CYCLE</b>	1000
<b>MINI CHARGING TEMPERATURE</b>	0°C

## ENGINE

<b>NOMINAL POWER</b>	6 Kw
<b>PEAK POWER</b>	11 Kw

## DIMENSIONS

<b>SEAT WEIGHT</b>	670 mm
<b>WHEEL BASE</b>	1325 mm
<b>GROUND CLEARANCE</b>	320 mm
<b>FOOTREST HEIGHT</b>	360 mm
<b>WIDTH</b>	825 mm

## SERIES EQUIPMENT

<b>MAPS</b>	3
<b>PELS / PRB</b>	Yes

## OPTIONS

<b>OPTIONS</b>	LED kit Trial training maps Flywheel Charger 25A (2h15)
----------------	--



# EPURE RACE 2020

This is the first homologated electric trial motorcycle ever sold equipped with a diaphragm clutch.

Imagine one of the lightest trial motorcycles on the market, add the torque of an electric powertrain and finally a high performance diaphragm clutch...

The Epure Race has no limit... except for its pilot's.



<b>MAX SPEED</b>	<b>RANGE</b>	<b>WEIGHT</b>	<b>TORQUE</b>	<b>ROAD LEGAL</b>
<b>65 KM/H</b>	<b>43 KM</b>	<b>72 KG</b>	<b>600 NM</b>	<b>125 CM<sup>3</sup></b>

## TECHNICAL SHEET

<b>FRAME</b>	15CDV6
<b>FRONT BRAKES</b>	Brake disc 182 mm 4 pistons
<b>REAR BRAKES</b>	Brake disc 150 mm 2 pistons
<b>FRONT RIM</b>	Morad Trial 1.8"x21
<b>REAR RIM</b>	Morad Trial 2.15"x18
<b>TIRES</b>	Michelin X11
<b>FRONT SUSPENSIONS</b>	M4
<b>FRONT SUSPENSION TRAVEL</b>	175 mm
<b>REAR SUSPENSION</b>	R16V
<b>REAR SUSPENSION TRAVEL</b>	170 mm

## BATTERY

<b>ENERGY</b>	Li-ion
<b>VOLTAGE</b>	50,4 V
<b>CAPACITY</b>	1875 Wh
<b>WEIGHT</b>	10,5 kg
<b>CHARGER</b>	15 A
<b>CHARGING TIME</b>	3h20
<b>LIFE CYCLE</b>	1000
<b>MINI CHARGING TEMPERATURE</b>	0°C

## ENGINE

<b>NOMINAL POWER</b>	6 Kw
<b>PEAK POWER</b>	11 Kw

## DIMENSIONS

<b>SEAT WEIGHT</b>	670 mm
<b>WHEEL BASE</b>	1325 mm
<b>GROUND CLEARANCE</b>	320 mm
<b>FOOTREST HEIGHT</b>	360 mm
<b>WIDTH</b>	825 mm

## SERIES EQUIPMENT

<b>SERIES EQUIPMENT</b>	Hydraulic controlled diaphragm clutch Flywheel
-------------------------	---

## OPTIONS

<b>OPTIONS</b>	LED kit Trial training maps Charger 25A (2h15)
----------------	--



*FUTURE IS ON*



Photo Trial Mag



*TRIAL HIKING MODEL  
ESCAPE*





## NEW FEATURES ESCAPE 2020



### FRAME

Initially developed for competition, Electric Motion chooses to provide its standard model with a high-end frame made of 15CDV6 steel tubes and micro fused pieces in 25CD4S. The frame itself weighs less than 5kg. All conditions are there to live a breathtaking experience



### BATTERY

The new Electric Motion battery pack is more efficient than ever. Its new, last generation BMS (Battery Management System) guarantees the best performance in use and in time. The new battery pack is more compact, lighter, removable and has a 60% longer operating life. It will make you wonder who will be exhausted first: your battery or yourself.



### DESIGN

The art of distinguishing itself, with a line and completely new colors, the Escape is more daring and elegant. With clean details and an original line cut with a scalpel, you have understood the Escape heals his style, his signature.

### ERGONOMICS AND TECHNOLOGIES

The new cockpit gives you all the information you need with only the blink of an eye. Ergonomic map control, remaining battery life on display (in %) for even more riding comfort.



### PELS/PRB

- PELS (Progressive Electronic Lever Switch): Progressive switch that simulates electronically a clutch. Very useful and efficient, it gives a better control of the power and allows turning it off very quickly (safety and efficiency).
- PRB (Progressive Regenerative Brake): Enables the use of an electric and progressive brake, which charges the battery while in use. On top of that, this system brings a comfortable security on the hard slopes, while avoiding the brakes overheating

### ON ROAD KIT

The new on road kit consists of a new head light and a new license plate holder. This new on road kit has a new design, more compact and robust for Off Road use.





## ESCAPE 2020

The Escape is the perfect bike to ride off-road from Electric Motion. Extend your boundaries and discover new horizons with the capabilities and performances of the new Escape.

With this brand new model, the adventure is now pushed to the extreme.

Reach across the borders and live the adventure with the Escape.



<b>MAX SPEED</b>	<b>RANGE</b>	<b>WEIGHT</b>	<b>TORQUE</b>	<b>ROAD LEGAL</b>
<b>70 KM/H</b>	<b>61 KM</b>	<b>77 KG</b>	<b>450 NM</b>	<b>125 CM<sup>3</sup></b>

### TECHNICAL SHEET

<b>FRAME</b>	15CDV6
<b>FRONT BRAKES</b>	Brake disc 182 mm 4 pistons
<b>REAR BRAKES</b>	Brake disc 150 mm 2 pistons
<b>FRONT RIM</b>	Morad Trial 1.6"x21
<b>REAR RIM</b>	Morad Trial 2.15"x18
<b>TIRES</b>	Michelin X11
<b>FRONT SUSPENSIONS</b>	Tech
<b>FRONT SUSPENSION TRAVEL</b>	175 mm
<b>REAR SUSPENSION</b>	R16V
<b>REAR SUSPENSION TRAVEL</b>	170 mm

### BATTERY

<b>ENERGY</b>	Li-ion
<b>VOLTAGE</b>	50,4 V
<b>CAPACITY</b>	2620 Wh
<b>WEIGHT</b>	14 kg
<b>CHARGER</b>	15 A
<b>CHARGING TIME</b>	4h15
<b>LIFE CYCLE</b>	1000
<b>MINI CHARGING TEMPERATURE</b>	0°C

### ENGINE

<b>NOMINAL POWER</b>	6 Kw
<b>PEAK POWER</b>	11 Kw

### DIMENSIONS

<b>SEAT WEIGHT</b>	820 mm
<b>WHEEL BASE</b>	1325 mm
<b>GROUND CLEARANCE</b>	320 mm
<b>FOOTREST HEIGHT</b>	360 mm
<b>WIDTH</b>	825 mm

### SERIES EQUIPMENT

<b>MAPS</b>	3
<b>PELS / PRB</b>	Yes

### OPTIONS

<b>OPTIONS</b>	LED kit Trial training maps Flywheel Charger 25A (2h15)
----------------	--



*FUTURE IS ON*







## 2020 RANGE TECHNICAL SHEET

	<b>EPURE LITE 2020</b>	<b>EPURE SPORT 2020</b>	<b>EPURE RACE 2020</b>	<b>ESCAPE 2020</b>
<b>DATA SHEET</b>				
Top speed	65 km/h	65 km/h	65 km/h	75 km/h
Range	100-240 min (43 km)	100-240 min (43 km)	100-240 min (43 km)	160-290 min (61 km)
Weight	73 kg	70 kg	71 kg	77 kg
Brakes	180 mm - 142 mm	180 mm - 142 mm	180 mm - 142 mm	180 mm - 142 mm
Tires	Michelin X11	Michelin X11	Michelin X11	Michelin X11
Front suspension	Tech	M4	M4	Tech
Rear suspension	R16V	R16V	R16V	R16V
<b>BATTERY</b>				
Energy	Li-ion	Li-ion	Li-ion	Li-ion
Voltage	50,4 V	50,4 V	50,4 V	50,4 V
Capacity	1875 Wh	1875 Wh	1875 Wh	2620 Wh
Weight	10.5 kg	10.5 kg	10.5 kg	14 kg
Charger	15 A	15 A	15 A	15 A
Charging time	3h20	3h20	3h20	4h15
Mini charging temperature	0°C	0°C	0°C	0°C
<b>ELECTRIC MOTOR</b>				
Wheel torque	600 Nm	600 Nm	600 Nm	450 Nm
Nominal power	6 Kw	6 Kw	6 Kw	6 Kw
Peak power	11 Kw	11 Kw	11 Kw	11 Kw
<b>DIMENSIONS</b>				
Seat weight	670 mm	670 mm	670 mm	810 mm
Wheel base	1325 mm	1325 mm	1325 mm	1325 mm
Ground clearance	320 mm	320 mm	320 mm	320 mm
<b>HOMOLOGATION</b>				
	L3e-A1T - Euro 5	L3e-A1T - Euro 5	L3e-A1T - Euro 5	L3e-A1T - Euro 5
<b>MAPS</b>				
	3	3	3	3
<b>STANDARD EQUIPMENT</b>				
	-	PRB / PELS	Hydraulic controlled diaphragm clutch Flywheel	PRB / PELS
<b>OPTIONS</b>				
	PRB PELS Trial training maps Flywheel Charger 25 A (2h15)	LED kit Trial training maps Flywheel Chargeur 25 A (2h15)	LED kit Trial training maps Charger 25 A (2h15)	LED kit Trial training maps Flywheel Charger 25 A (2h15)

\*Top speed and range vary based on riding style and drivetrain configuration.



## CONTACT

**ELECTRIC MOTION**  
ZAC Via Domitia  
280 Rue du Trident  
34740 Vendargues, FRANCE

[www.electric-motion.fr](http://www.electric-motion.fr)  
[info@electric-motion.fr](mailto:info@electric-motion.fr)

Office : +33 (0)4 67 41 10 90  
Mobile : +33 (0)6 87 54 95 64

Follow us on :



Projet cofinancé par le Fonds Européen de Développement Régional

#### EXCLUSION OF LIABILITY

Attention this brochure contains photos taken on private land and / or abroad.  
Use of these vehicles in a similar environment in your jurisdiction may be prohibited  
by the legislation and / or regulations in force in your area, including by Article L362-1 and following the Code of the Environment.  
The photos do not contain any contractual nature and the potential buyer of this vehicle will remain solely responsible for the use of the vehicles,  
as well as for the respect of the legislation and regulation in force.

Example not to follow. The riders represented are professionals.  
Electric Motion draws the attention of all bikers to the importance of wearing the prescribed protective gear  
(approved helmet, gloves, jacket, pants and boots) and the need to ride responsibly,  
in accordance with the rules of the road.

The purchase and commissioning of a motorcycle requires compliance with the instructions and warnings  
of the user manual.

Motorcycles shown in photo may differ from the standard model on certain details and some are equipped with optional accessories.

All indications on the appearance, performance, dimensions and weight of motorcycles are not contractual  
and may contain input or print errors. They are therefore subject to modification.

Please note that model specifications may vary from country to country.

Do not litter.