

INSTALLATION INSTRUCTIONS



No. 940197



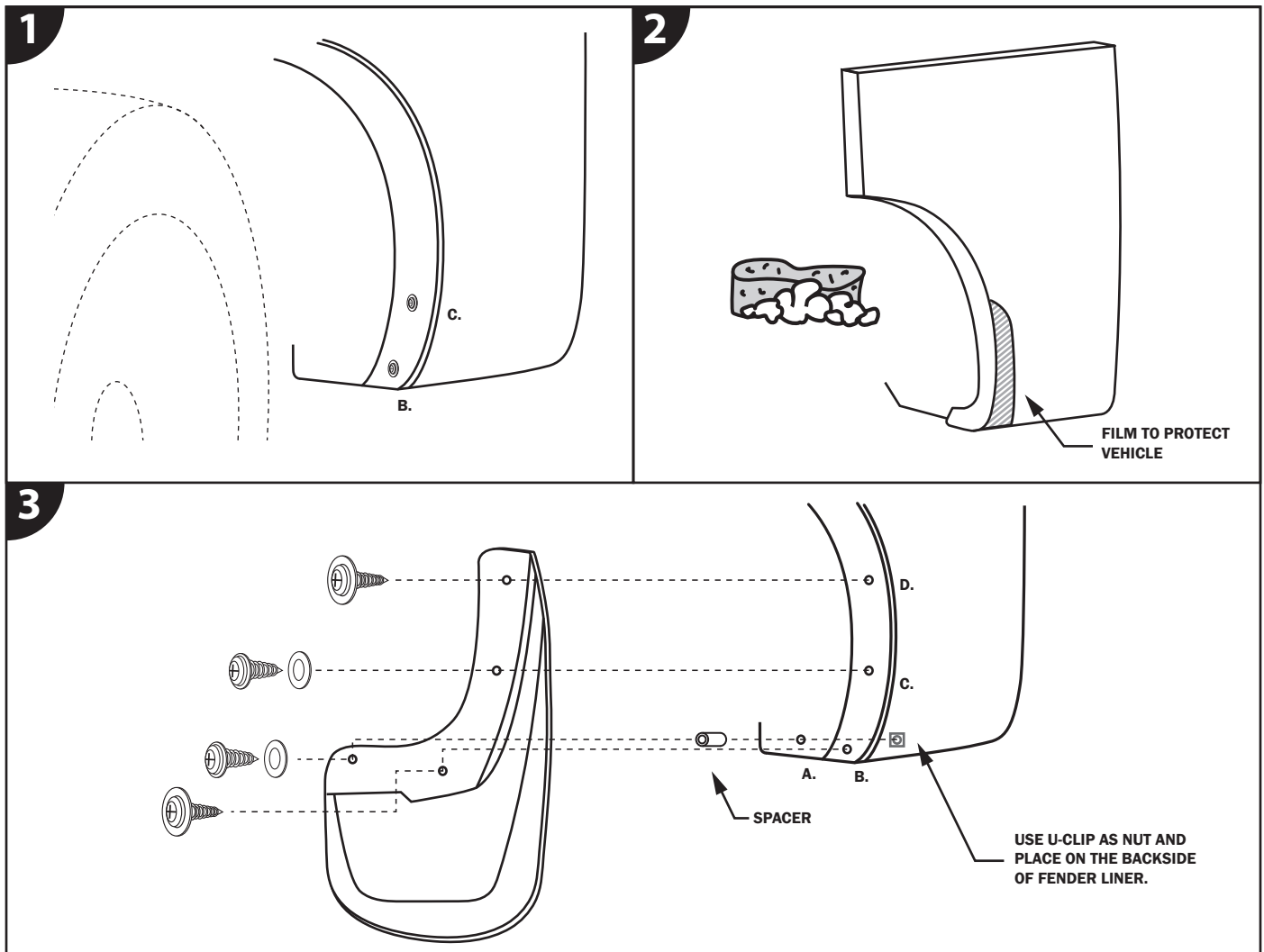
CUSTOM MOLDED FRONT MUD GUARDS FOR FORD F-150 WITHOUT FACTORY FENDER FLARES

Tools Needed

- Drill with 1/8" Bit
- Center punch
- Phillips head screwdriver

Included in Box

- Front Mud Guards (for driver & passenger side)
- Film to protect vehicle
- #10 Screws and Washers (x4)
- U-Clips (x2)
- Spacer (x2)



Repeat Steps 1-3 for Driver & Passenger Side

STEP 1. Remove existing fasteners.

- a. Remove your existing fasteners from locations B and C.

STEP 2. Apply film to protect vehicle.

- a. Using a clean cloth or wet alcohol pad, clean the area on the fender where the film (to protect vehicle) will be placed.
- b. Use soapy water to wet film, fender, and fingers for a wet film installation. Apply film in location shown in diagram, with adhesive side of film towards the vehicle. Apply pressure and smooth out film with a squeegee or sponge and allow to dry.

STEP 3. Install mud guards.

- a. Using your existing factory fasteners, attach the mud guard at locations B and C.
- b. Drill 1/8" holes at locations A and D using the mud guard as a guide.
- c. Screw a #10 screw and washer into newly drilled hole at location D.
- d. Use the provided U-Clip as a nut on the backside rather than as a clip. Use a #10 screw through a washer, the mud guard, the provided spacer, fender liner, then finally through the U-Clip.

INSTALLATION INSTRUCTIONS



No. 940191



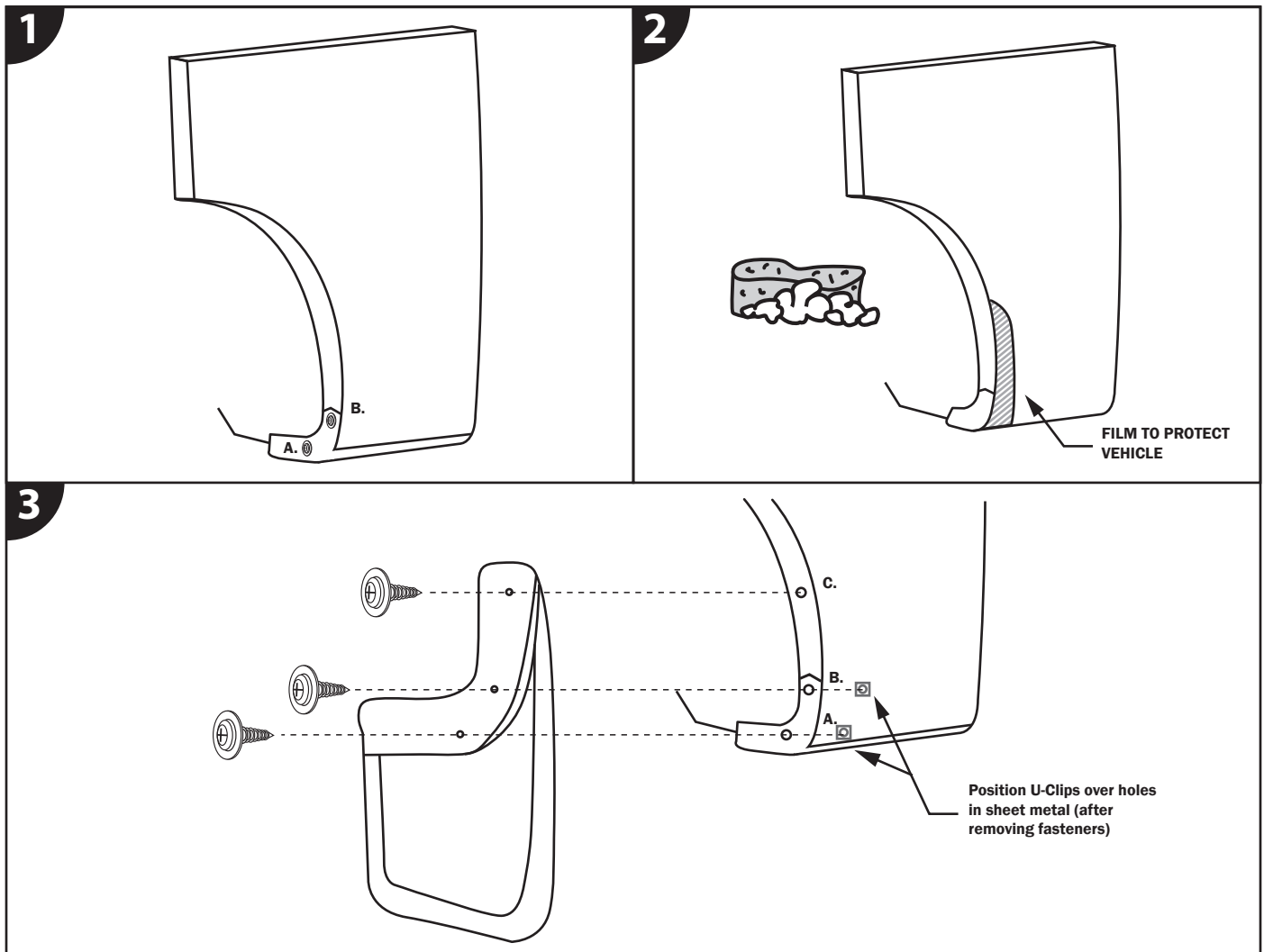
CUSTOM MOLDED REAR MUD GUARDS FOR FORD F-150 WITHOUT FENDER FLARES

Tools Needed

- Drill with 1/8" Bit
- Center punch
- Phillips head screwdriver

Included in Box

- Rear Mud Guards (for driver & passenger side)
- Film to protect vehicle
- #10 SEM Screws (6x)
- U-Clips (4x)



Repeat Steps 1-3 for Driver & Passenger Side

STEP 1. Remove existing fasteners.

- Remove your existing fasteners from locations A and B.

STEP 2. Apply film to protect vehicle.

- Using a clean cloth or wet alcohol pad, clean the area on the fender where the film (to protect vehicle) will be placed.
- Use soapy water to wet film, fender, and fingers for a wet film installation. Apply film in location shown in diagram, with adhesive side of film towards the vehicle. Apply pressure and smooth out film with a squeegee or sponge and allow to dry.

STEP 3. Install mud guards.

- Position U-Clips over the sheet metal at location A and B, aligning with the fastener holes.
- Using #10 SEM screws, attach the mud guard at locations A and B. Check alignment before moving to the next step.
- Use the mud guard as a template to center punch and then drill a 1/8" hole at location C.
- Screw a #10 SEM screw into newly-drilled location C.