

# INSTALLATION INSTRUCTIONS



No. 940419



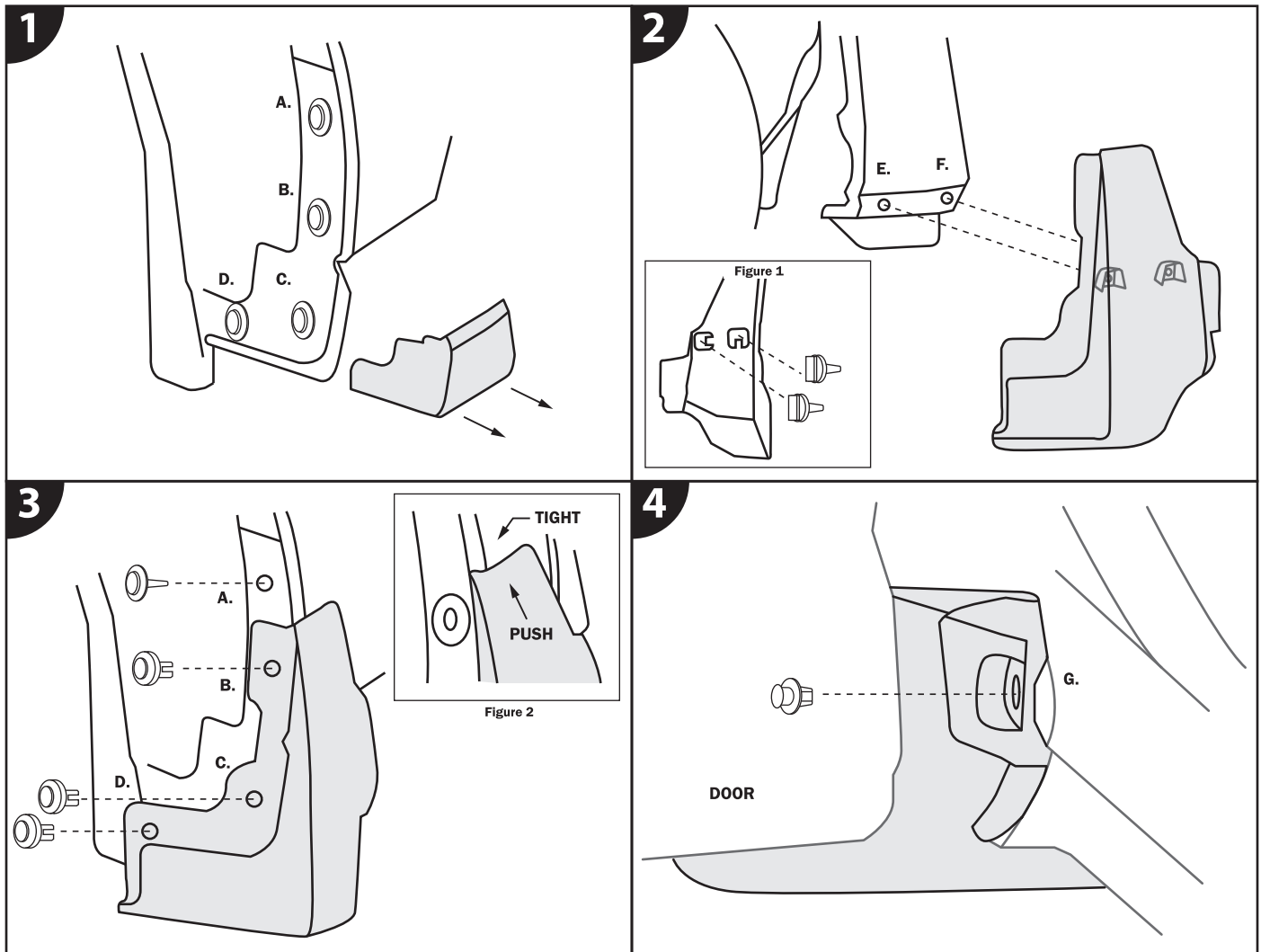
## CUSTOM MOLDED FRONT MUD GUARDS FOR SUBARU FORESTER

### Tools Needed

- Standard flat-head screwdriver

### Included in Box

- Front Mud Guards (for driver & passenger side)
- Rivet(a) (x6)
- Rivet(b) (x2)
- Trim Clips (x4)



\*Repeat Steps 1-4 for Driver & Passenger Side\*

### STEP 1. Remove existing fasteners.

- Remove existing Fastener from location A. Save for later step.
- Remove and discard existing Fasteners from locations B, C, and D.
- Remove fender guard and discard. Being sure to remove all clips and tape.

### STEP 2. Attach mud guard.

- Install Trim Clips onto mud guard. (Figure 1)
- Attach mud guard using the Trim Clips at locations E and F.

### STEP 3. Attach mud guards.

- Reinstall Fastener removed in Step 1 at location A.
- Attach mud guard using Rivet(a) at locations B, C and D.

### STEP 4. Secure mud guards.

- Secure mud guard using Rivet(b) at location G.

# INSTALLATION INSTRUCTIONS



No. 940420



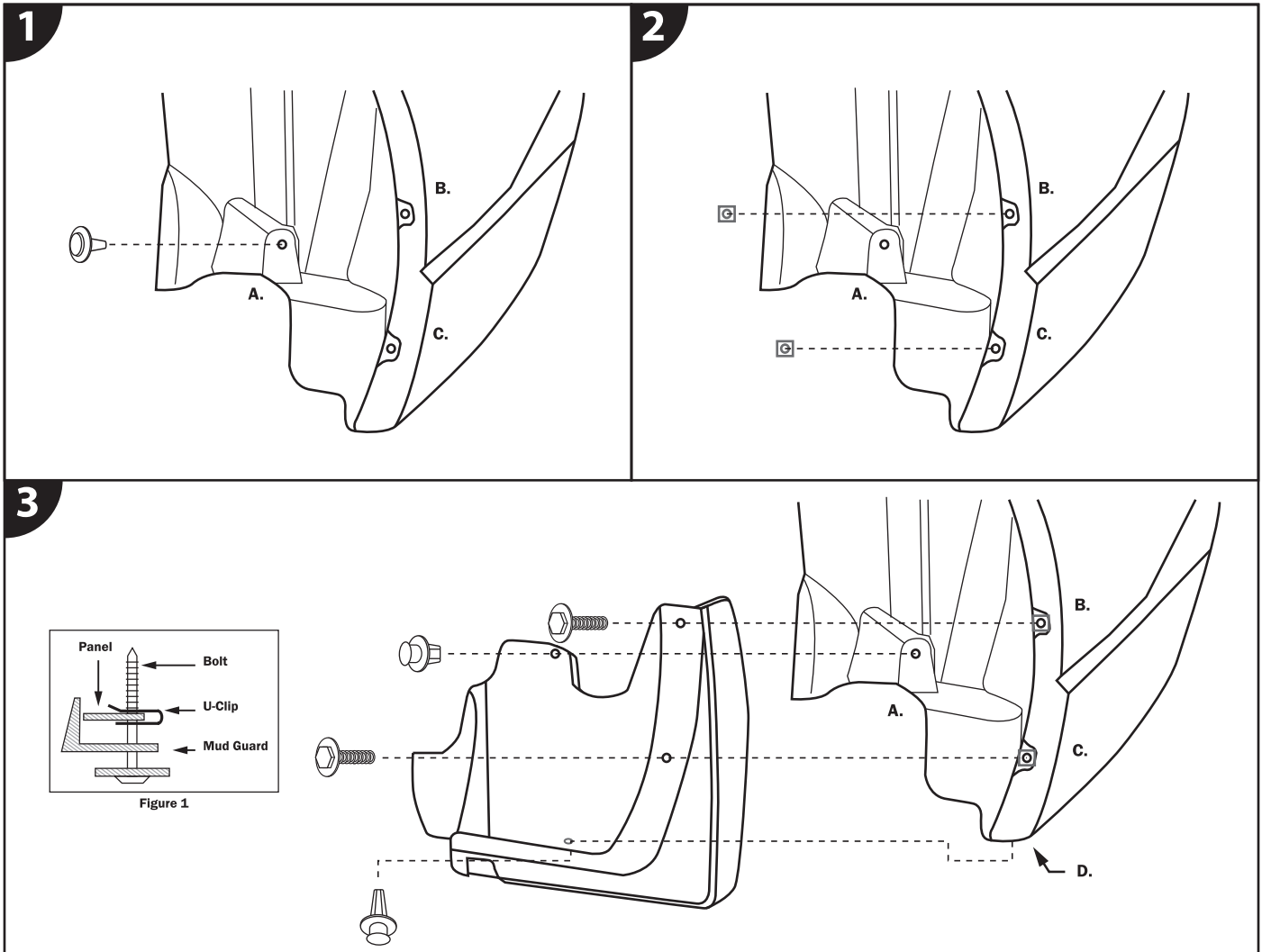
## CUSTOM MOLDED REAR MUD GUARDS FOR SUBARU FORESTER

### Tools Needed

- Phillips head screwdriver
- Flat head screwdriver
- 20mm socket

### Included in Box

- Rear Mud Guards (for driver & passenger side)
- 20mm Bolt and Washers (x4)
- U-Clip (x4)
- Small Rivets (x2)
- Long Rivets (x2)



\*Repeat Steps 1-3 for Driver & Passenger Side\*

### STEP 1. Remove existing fasteners.

- a. Remove and discard existing Fastener from location A.

### STEP 2. Install U-Clips.

- a. Install U-Clips over the existing holes at locations B and C. (Figure 1)

### STEP 3. Secure mud guards.

- a. Attach mud guard using 20mm Bolts and Washers at locations B and C.
- b. Install Small Rivet at location A.
- c. Install Long Rivet at location D (underneath).