

INSTALLATION INSTRUCTIONS



No. 940422



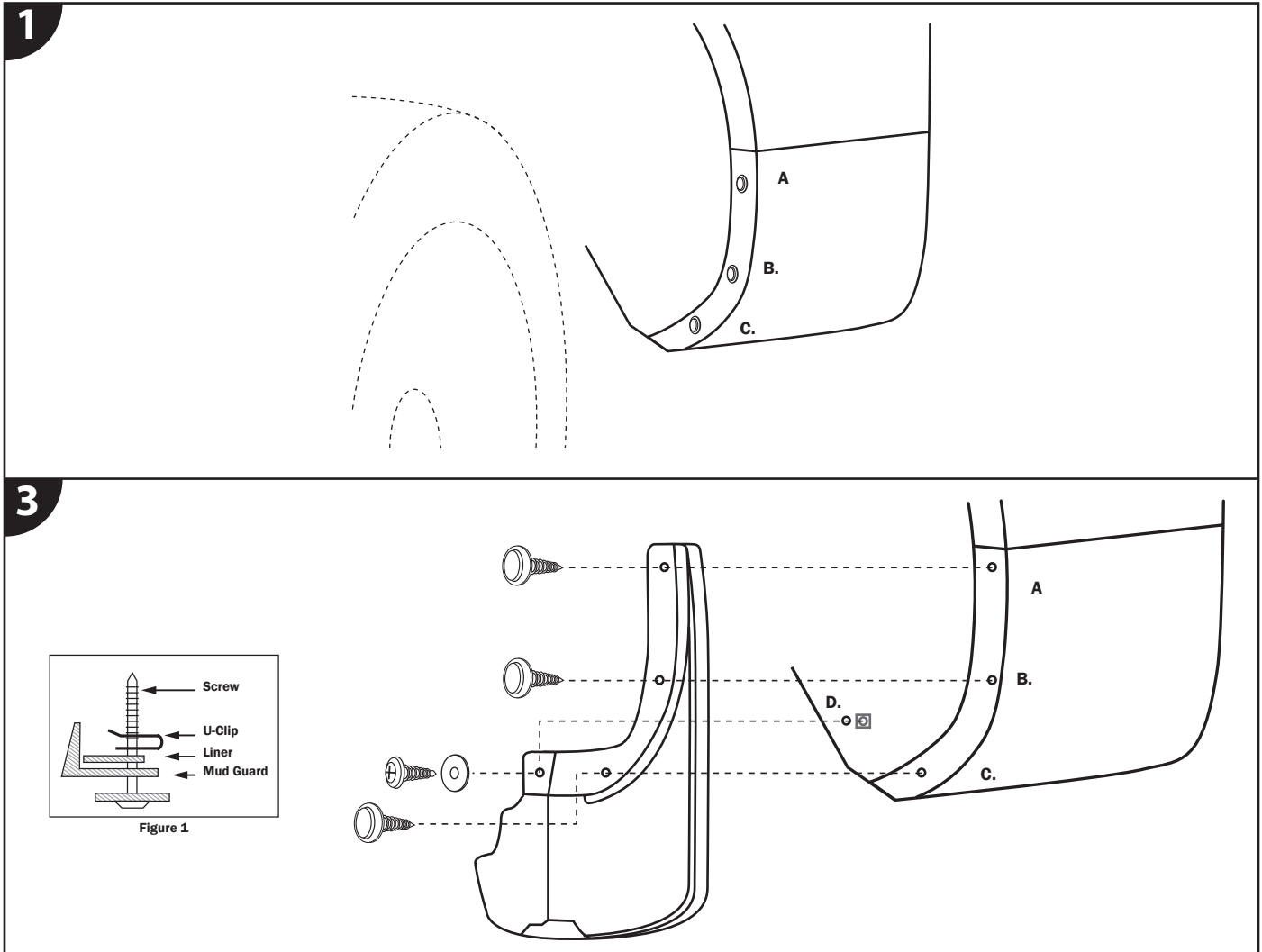
CUSTOM MOLDED REAR MUD GUARDS FOR FORD EXPLORER

Tools Needed

- Phillips head screwdriver

Included in Box

- Rear Mud Guards (for driver & passenger side)
- #10 Self-Drilling Screws and Washers (x2)
- U-Clips (x2)



STEP 1. Remove existing fasteners.

- Remove existing Screws from locations A, B, and C. Save for later step.

STEP 2. Install mud guard.

- Using the Screws removed in Step 1, attach mud guard at locations A, B, and C.
- Install a #10 Self-Drilling Screw and Washer at location D into a U-Clip behind the liner. (Figure 1)

NOTE* It may be necessary to remove the rear tires before installation.