

INSTALLATION INSTRUCTIONS



No. 940419



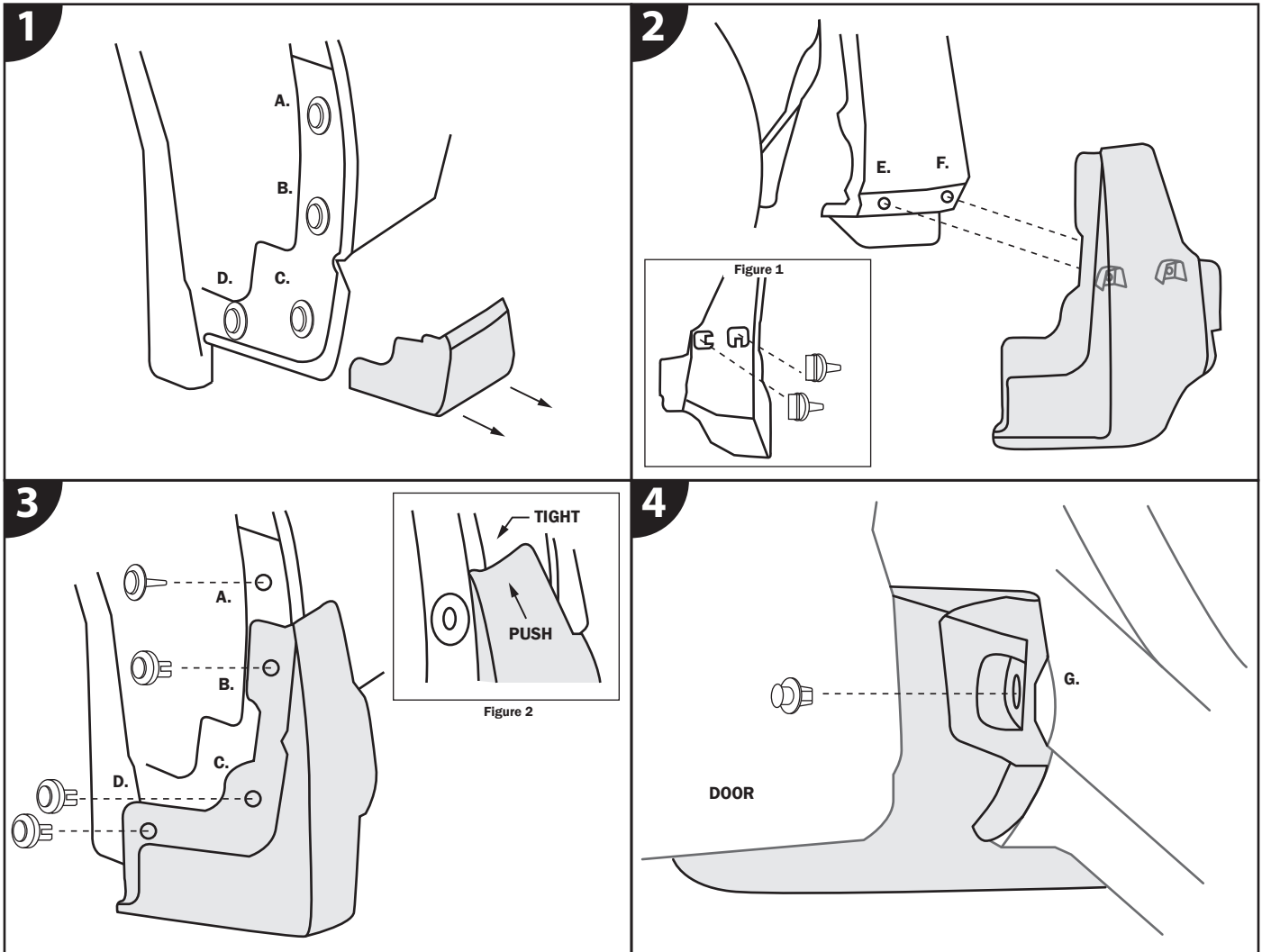
CUSTOM MOLDED FRONT MUD GUARDS FOR SUBARU FORESTER

Tools Needed

- Standard flat-head screwdriver

Included in Box

- Front Mud Guards (for driver & passenger side)
- Rivet(a) (x6)
- Rivet(b) (x2)
- Trim Clips (x4)



Repeat Steps 1-4 for Driver & Passenger Side

STEP 1. Remove existing fasteners.

- Remove existing Fastener from location A. Save for later step.
- Remove and discard existing Fasteners from locations B, C, and D.
- Remove fender guard and discard. Being sure to remove all clips and tape.

STEP 2. Attach mud guard.

- Install Trim Clips onto mud guard. (Figure 1)
- Attach mud guard using the Trim Clips at locations E and F.

STEP 3. Attach mud guards.

- Reinstall Fastener removed in Step 1 at location A.
- Attach mud guard using Rivet(a) at locations B, C and D.

STEP 4. Secure mud guards.

- Secure mud guard using Rivet(b) at location G.