

INSTALLATION INSTRUCTIONS



No. 940275



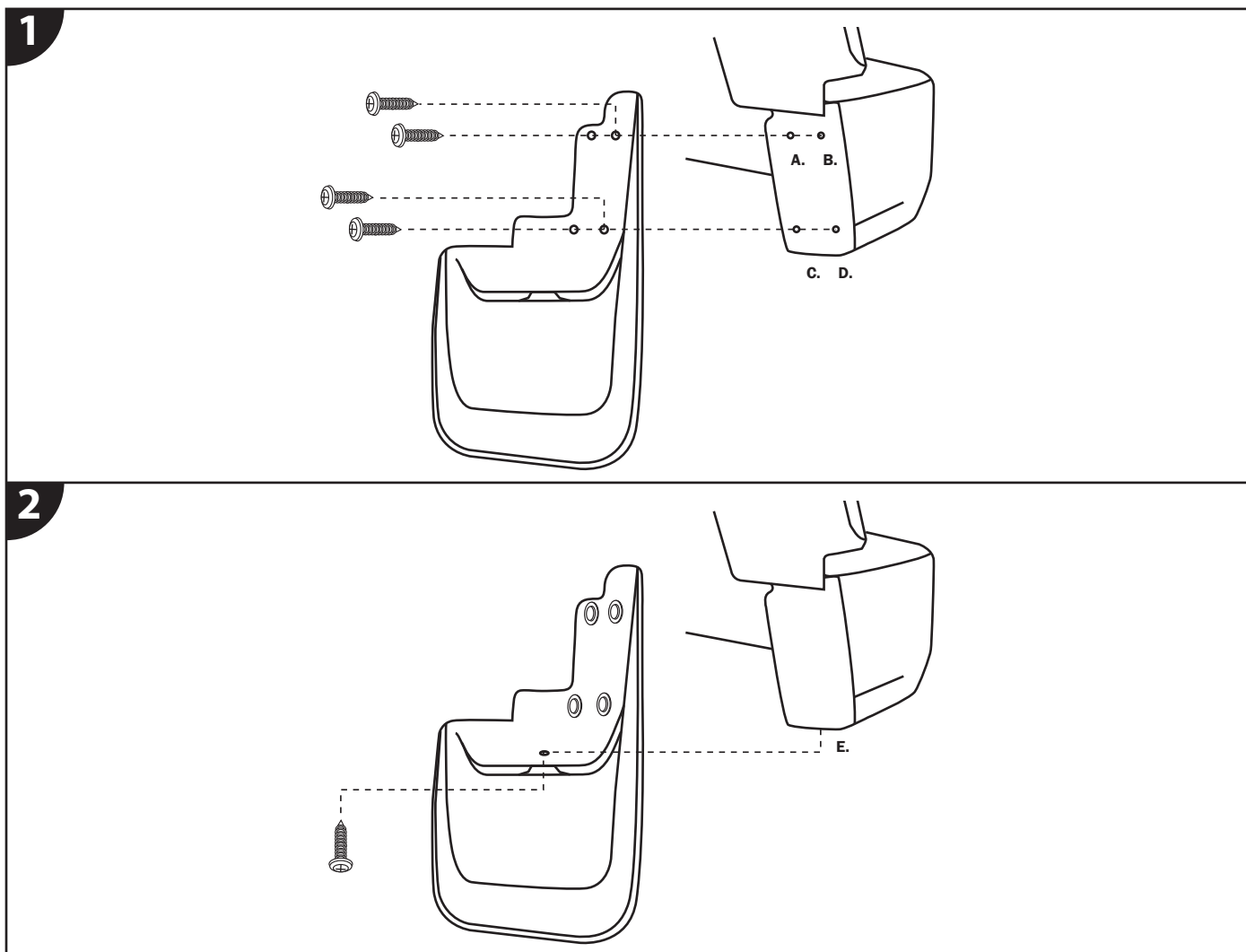
CUSTOM MOLDED REAR MUD GUARDS FOR JEEP WRANGLER

Tools Needed

- Drill with 1/8" bit
- Phillips head screwdriver
- Center punch

Included in Box

- Rear Mud Guards (for driver & passenger side)
- Phillips Screws (x10)



Repeat Steps 1-2 for Driver & Passenger Side

STEP 1. Attach Mud Guard.

- a. Using the mud guard as a guide, mark area for hole at location D. (**NOTE:** Some models may have holes already.)
- b. Drill 1/8" holes at marked location D.
- c. Install provided screw at hole locations A, B, C, and D.

STEP 2. Secure Mud Guard.

- a. While the mud guard is attached, mark area for hole at location E. (**NOTE:** Some models may have holes already.)
- b. Drill 1/8" hole at location E.
- c. Install provided screw at location E.