



Supplied proudly in New Zealand by

WS⁺
MEDICAL

Chart Trolleys, Workstations,
Room Dividers & Screens

Caretray Trolley - Chart

Features

- Single & double column easy clean fixed height chart trolleys
- Angle adjustable chartboard fitted with a spring clip (adjustable 7 - 45 degrees)
- Lower lip on chartboard to support pens etc.
- Quick & easy disassembly, assists thorough & deep cleaning
- Fully welded mild steel frame
- Recyclable polypropylene one-piece side panels, smooth surfaces & radiused edges assists cleaning (compatible with steam cleaning)
 - Side Panels - Incorporate runners with positive stops preventing trays from being accidentally withdrawn (symmetrical design allows tray insertion from either side)
- Carerails fitted to either side (2 x L/H, 1 x R/H) support a wide range of accessories
- Drop down work flap fitted to R/H side
- Translucent, impact-resistant trays & dividers, smooth surfaces & radiused edges assists cleaning (compatible with steam cleaning / high temperature machine washing)
- Trays feature an integral handle with a plastic clip-on label cover (coloured label strips supplied - white, blue, green, yellow & red)
- 100 / 150mm deep trays, can be subdivided in both length & width using removable dividers (max load 5kg)
- 2 x long & 2 x short dividers supplied with each tray
- 100mm pressed steel castors, 2 off braking

Dimensions (w x d x h)

- Overall Dimensions
 - Single Column - 550 x 665 x 1115 - 1450mm
 - Double Column - 1005 - 665 x 1115 - 1450mm
- Usable Chart Area
 - Single Column - 500 x 530mm
 - Double Column - 800 x 530mm
- Work Flap - 420 x 290mm (w x d)
- Trays
 - Shallow Tray - 355 x 405 x 100mm (internal)
 - Deep Tray - 355 x 405 x 150mm (internal)

Single Column

Description	Item	Weight
3 x 100mm, 2 x 150mm Trays	CTCHARM1/10/3S2D	33.2kg
4 x 100mm, 1 x 150mm Trays	CTCHARM1/10/4S1D	32.9kg



CTCHARM1/10/3S2D

Standard Colours

- Paint - White
- Chartboard / Work Flap - White

Accessories

- Carerail Mounted - page 62
- Laptop Holders - page 68
- Castors & Ring Buffers - page 70
- Trays, Shelves, Dividers & Labels - page 71



Angle adjustable chartboard
(adjustable 0 - 50 degrees)



CTCHARM2/10/6S4D

Double Column

Description	Item	Weight
6 x 100mm, 4 x 150mm Trays	CTCHARM2/10/6S4D	53.2kg
8 x 100mm, 2 x 150mm Trays	CTCHARM2/10/8S2D	51.2kg

Chart Workstations - Fixed Height

Features

- Fixed height chart workstation
- Angle adjustable chart board fitted with a spring clip (adjustable 0 - 50 degrees)
- Usable chart area 800 x 530mm (w x h)
- Lower lip on chart board to support pens etc.
- Fully welded mild steel frame
- Carerails fitted to each side of the trolley (2 x L/H, 1 x R/H) to support a wide range of accessories
- Drop down work flap fitted to R/H side
- 100mm pressed steel castors, 2 off braking

Dimensions (w x d x h)

- Overall Dimensions - 1010 x 550 - 620 x 1040 - 1450mm
- Usable Chart Area - 800 x 530mm
- Work Flap - 420 x 290mm (w x d)

Standard Colours

- Paint - White
- Chartboard / Work Flap - White

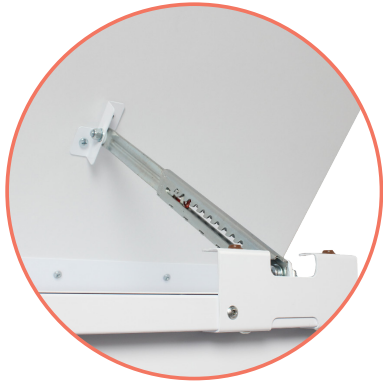
Accessories

- Carerail Mounted - page 62
- Castors & Ring Buffers - page 70



CWF/80/SP

Item	Description	Weight
CWF/80	Chart Workstation - Fixed Height	23.0kg
CWF/80/SP	Chart Workstation - Fixed Height, Storage Pocket	33.0kg



Angle adjustable chartboard
(0 - 50 degrees)



CWF/80

Chart Workstations - Variable Height

Features

- Height adjustable using a gas damper (795 - 1075mm)
- Angle adjustable chartboard fitted with spring clips (adjustable 0 - 90 degrees)
- Chartboard available in two sizes (w x h)
 - Small - 790 x 700mm
 - Large - 790 x 800mm
- Lower lip on chartboard to support pens etc
- Slide out shelf at front
- Document storage pocket on side to accept patients notes, ring binders, etc
- 80mm swivel castors, 2 off braking

Dimensions (w x d x h)

- Overall Dimensions - 800 x 700 / 800 x 1095mm
- Document Storage Pocket - 75 x 255 x 360mm (internal)

Standard Colours

- Paint - White
- Chartboard - White

Accessories

- ZP010 - 100mm Ring Buffers



CB/100/A

Item	Description	Weight
CB/100/A	Chart Workstation - Variable Height, Small, 700mm High Board	40.0kg
CB/100/B	Chart Workstation - Variable Height, Large, 800mm High Board	41.0kg

Chart Boards - A4 & A3

Features

- A4 one spring clip (holds one chart 220 x 280mm)
- A3 two spring clips (holds one chart 450 x 280mm or two charts 220 x 280mm)
- Available with a 30 or 50mm mild steel square hook

Standard Colours

- White



Item	Description	Overall Dimensions (w x d x h)	Weight
A4 Chart Board			
CB005	A4, 30mm Hook	230 x 80 x 370mm	0.5kg
CB010	A4, 50mm Hook	230 x 100 x 370mm	0.5kg
A3 Chart Board			
CB015	A3, 30mm Hook	460 x 80 x 370mm	0.8kg
CB020	A3, 50mm Hook	460 x 100 x 370mm	0.8kg

Document Holders - A4 & A3

Features

- A4 size suitable for A4 ring binders or foolscap notes (pocket size 260 x 65mm)
- A3 size suitable for A3 notes & x-rays (pocket size 398 x 100mm)
- Open front design allows for easy patient identification
- Available for wall fitting or with a 50mm square hook

Standard Colours

- Paint - Grey White



Item	Description	Overall Dimensions (w x d x h)	Weight
A4 Document Holder			
DH/A4/WF	A4, Wall Fitting	280 x 70 x 400mm	1.4kg
DH/A4/50	A4, 50mm Hook	280 x 125 x 405mm	1.4kg
A3 Document Holder			
DH/A3/WF	A3, Wall Fitting	405 x 105 x 400mm	2.9kg
DH/A3/50	A3, 50mm Hook	405 x 160 x 405mm	3.0kg

Room Dividers

Features

- Fixed height mobile room divider/workstation
- Ideal for use in critical care areas - A&E, ICU, ICT, HDU
- Modular design allows the unit to be configured to suit your specific requirements
- Frame, worktop & upstand/panel available as...
 - Full width upstand
 - Full width upstand & right hand mounted panel
 - Full width upstand & left hand mounted panel
 - Full width panel
- Four configurations of lower units...
 - Three drawer unit, upper drawer fitted with an electronic push button lock (2 x 170, 1 x 285mm drawers)
 - Five drawer unit, upper drawer fitted with an electronic push button lock (5 x 125mm drawers)
 - Cupboard with double doors & removable shelf
 - Cover panel (creates a space within the unit)
- Easy clean solid grade laminate work surface & upstand/panel
- Upper panel fitted with
 - Triple glove box holder
 - Alcohol gel holder (compatible with 500ml bottles, 70 x 70 x 225mm)
 - Apron roll dispenser
- 100mm ring buffers to protect the fabric of the building
- 100mm swivel castors, 2 off braking

Dimensions (w x d x h)

- RD1 - 1768 x 698 x 1000mm
- RD2R/RD2L - 1768 x 698 x 1588mm
- RD3 - 1768 x 698 x 1350mm

Standard Colours

- Paint - White
- Worksurface / Upstand / Panel - White

Options / Accessories

- CC - Colour coded drawers available on request
- DTSF/RD/450/2 - Dressing Trolley
 - Seamlessly welded 304 grade stainless steel frame
 - Fixed shelves with down turned sides
 - Shelf Heights 375 & 840mm
 - Max load per shelf 40kg



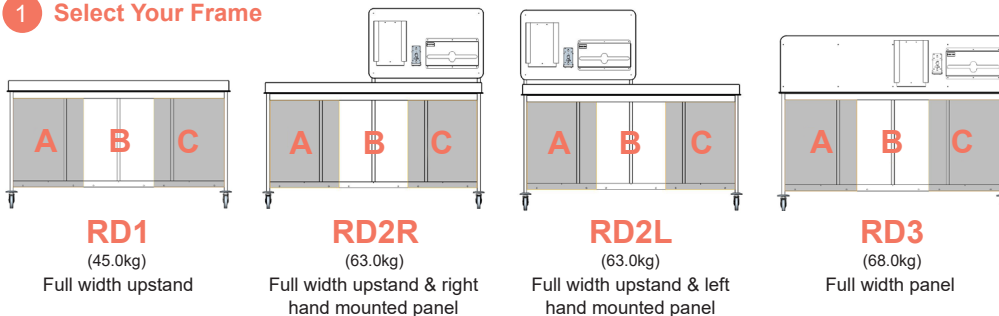
RD1/D3/DD/D5



RD2L/D3/CP/D3

Configure Your Workstation in Four Easy Steps...

1 Select Your Frame

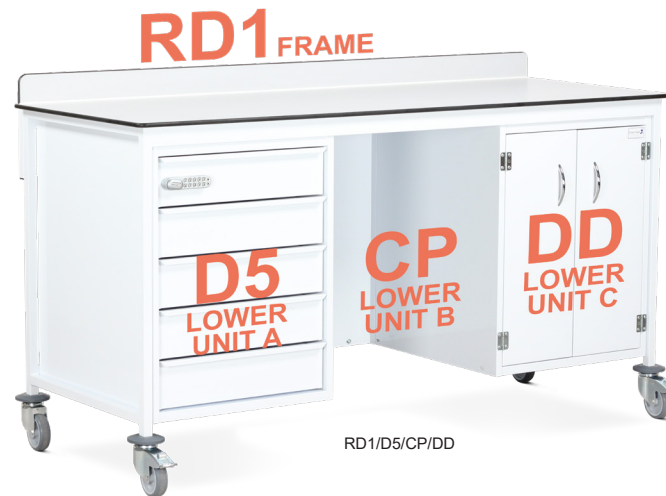
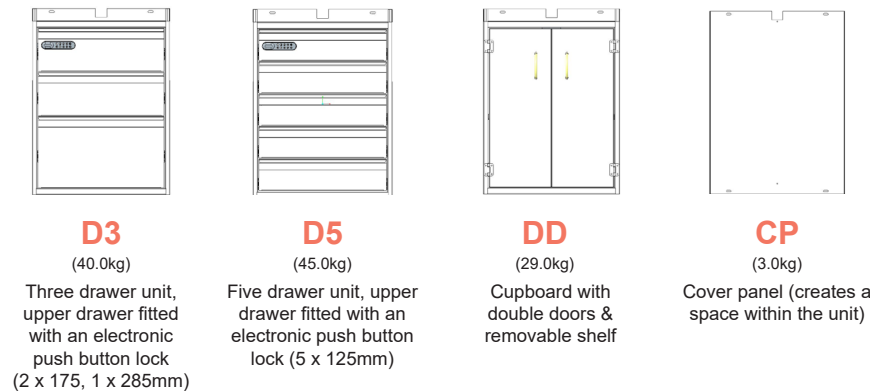


RD3/DD/CP/D5/CC configured with DTSF/RD/450/2 & colour coded drawers

2 Select Lower Unit A

3 Select Lower Unit B

4 Select Lower Unit C



RD1/D5/CP/DD

Screen - Curtain, Four Section, Folding

Features

- PVC fire retardant curtain (machine washable)
- Available as four section
- 50mm polypropylene / thermoplastic rubber twin-wheel non-marking castors

Dimensions (w x d x h)

- Overall Screen Height - 1708mm
- Lowest Screen Height - 288mm
- Folded - 650 x 420 x 1790mm

Standard Colours

- Paint - White
- Curtain - Grey

Spares

- WS/SPARES/001 - Set of 4 replacement curtains



MS/C4



Item	Description	Overall Dimensions (w x d x h)	Weight
MS/C4	Mobile Screen - Curtain, Four Section, Folding	2450 x 420 x 1790mm	14.6kg

Mobile Screen - Solid, Three & Four Section, Folding

Features

- Folding compact laminate solid screens
- Available as either three or four section
- Smooth surface assists cleaning
- 50mm polypropylene / thermoplastic rubber twin-wheel non-marking castors

Dimensions (w x d x h)

- Overall Screen Height - 1680mm
- Lowest Screen Height - 180mm
- Folded - 600 x 435 x 1680mm

Standard Colours

- Paint - Spearmint
- Screen - Grey White



MS/S3



MS/S4

Item	Description	Overall Dimensions (w x d x h)	Weight
MS/S3	Mobile Screen - Solid, Three Section, Folding	1802 x 435 x 1680mm	20.8kg
MS/S4	Mobile Screen - Solid, Four Section, Folding	2403 x 435 x 1680mm	27.8kg



Manufacturing Medical Furniture & Equipment Since 1953

With over 70 years of experience, Bristol Maid is a leading manufacturer and supplier of medical furniture & equipment.

From design and manufacture to supply and installation, Bristol Maid has a reputation for providing high product quality, excellent customer service and value for money.

We take pride in working in close partnership with our customers applying innovative design and technology to deliver effective solutions for today while anticipating the needs of tomorrow.



Hospital Metalcraft Limited
Blandford Heights, Blandford Forum,
Dorset. DT11 7TG, UK

Tel: +44 (0) 1258 451338
Fax: +44 (0) 1258 455056
sales@bristolmaid.com

www.bristolmaid.com

Supplied proudly in New Zealand by



WS Medical

Email: admin@wsmedical.co.nz
Freephone: 0800 330 331

www.wsmedical.co.nz

