



# THUMPER FAB

Aluminum Audio Roofs • Roll Cages • UTV Accessories

## CAN-AM MAVERICK X3 MAX Nerf Rails

SKU: TF050701



### Thumper Fab

5103 Elysian Fields Rd, Marshall, TX 75672

Customer Service: 903-472-0928

[www.thumperfab.com](http://www.thumperfab.com)

Ver. 0422

# CAN-AM MAVERICK X3 MAX

## Nerf Rails

SKU: TF050701



### PARTS

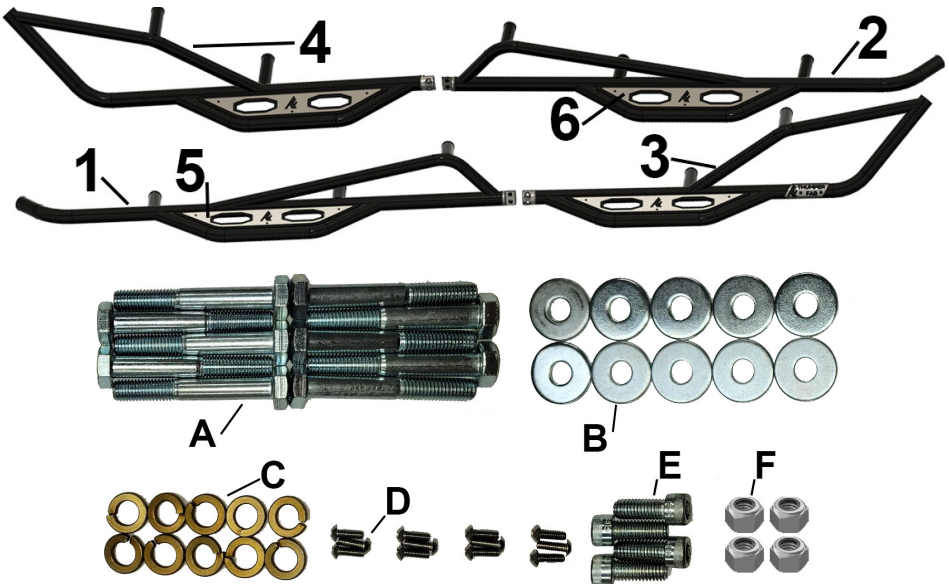
REF	QTY	DESCRIPTION
1	1	Front Driver Rail
2	1	Front Passenger Rail
3	1	Rear Driver Rail
4	1	Rear Passenger Rail
5	2	Driver Accent Panel
6	2	Passenger Accent Panel
Hardware Kit		
A	10	M10-1.5 x 70mm Cap Screw
B	10	M10 Fender Washer
C	10	M10 Split Lock Washer
D	12	#8-32 x 1/2" Button Cap Screw
E	4	5/16"-18 x 3/4" Socket Cap Screw
F	4	5/16"-18 Lock Nut

### TOOLS

- 17mm Wrench
- 1/4" Allen/Hex Wrench
- 3/32" Allen/Hex Wrench
- 2" Hole Saw
- Drill
- Utility Knife

### BEFORE YOU BEGIN

If you do not feel comfortable installing your **Thumper Fab** Nerf Rails, please see your nearest Can-Am® Dealer for installation.



# INSTALLATION INSTRUCTIONS

**Note:** Installation is identical for driver and passenger side rails

## Drill Side Holes

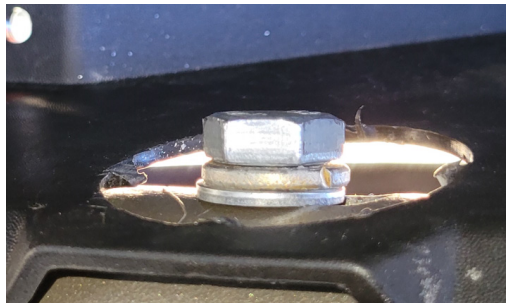
Locate and drill out the 5 indicated holes on each side with the 2" hole saw (**FIG 1**). There are dimples in the plastic that can be used to reference the hole locations. **NOTE: The factory holes in the frame rails do not line up with the dimples. To compensate for this, the center of the drilled hole should be 3/8" directly above the dimples.**



**FIG 1 - Drill Holes**

## Cut out Rear Holes

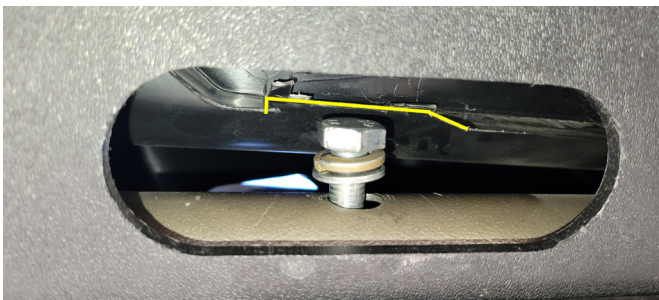
Slide the rear seats all the way forward. Locate the circular breakout hole on the inside of the rear lower side panel. Use the utility knife to cut the tabs and remove the plastic hole cover (**FIG 2**).



**FIG 2 - Cut Out Plastic**

## Cut Slot in Front Undertrim

Locate the front hole on the plastics (the furthest left hole in **FIG 1**). Find the slot in the skid plate beneath it. Use the utility knife to trim the plastic, roughly 1-1/2" x 3/4", based on clearance needed to feed and thread the bolt through the frame (**FIG 3**).



**FIG 3 - Cut Plastic**

# INSTALLATION INSTRUCTIONS

## Install Front Nerf Rail

Align the front nerf rail with the cut out holes (**FIG 4**). Use a 17mm wrench and the M10 hardware to loosely fasten the front rail to the unit (**FIG 5**). The hardware should run *M10-1.5 x 70mm cap screws (A)* → *lock washer (C)* → *fender washer (B)* → *frame tube* → *nerf rail threaded tube end*. There will be 3 points where the front rail is secured to the unit, one at each hole marked in green in **FIG 1**. **DO NOT TIGHTEN.**



FIG 4 - Install Front Nerf Rail

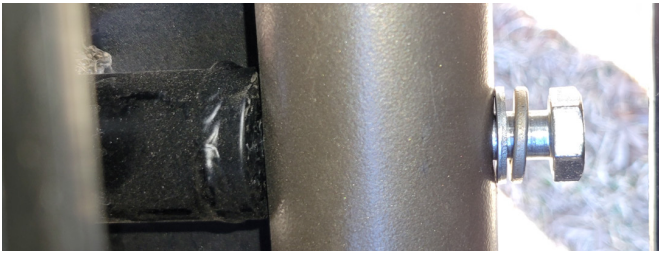


FIG 5 - Bolt and Washer Sequence (17mm Wrench)

## Install Rear Nerf Rail

Align the rear nerf rail with the cut out holes (**FIG 6**). Loosely fasten the rear rail to the unit in the same manner as the front rail. There will be 2 points where the rear rail is secured to the unit, one at each hole marked in red in **FIG 1**. **DO NOT TIGHTEN.**



FIG 6 - Install Rear Nerf Rail

# INSTALLATION INSTRUCTIONS

## Connect Front and Rear Rails

Align the front and rear rail bungs. Use the 1/4" allen wrench to thread and tighten the 5/16"-18 x 3/4" socket cap screws (E) and 5/16"-18 lock nuts (F) into the rail bungs to fasten the bungs together (FIG 7).



FIG 7 - Fasten Bungs Together (1/4" Allen Wrench)

## Tighten Rail Hardware

With the 17mm wrench, snug all the M10 hardware to evenly pull the rail to the frame. **Do not overtighten at risk of crushing the frame tube.**

## Install Accent Panels

Use the #8-32 x 1/2" bolts (D) to install the accent panels (5,6) to the nerf rail step plates (FIG 8). The bolts will thread into rivnuts on the nerf rails. Use 3/32" allen wrench to tighten.



FIG 8 - Install Accent Panels (3/32" Allen Wrench)



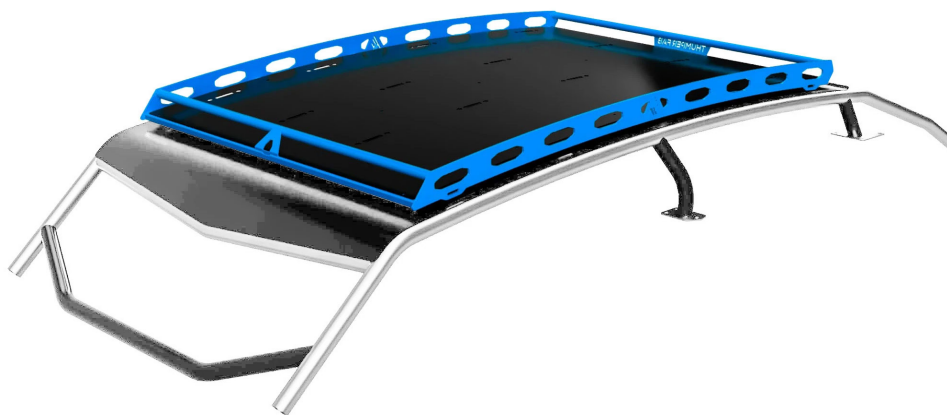
**Enjoying your Thumper Fab Nerf Rails?  
Check out these other Thumpin' products  
for your Maverick X3 MAX!**



**TF050501 - Front Winch Bumper & Bulkhead  
Cube Lights, KC Lights, And Winch Options Available!**



**TF050203 - Roll Cage**  
**Roof And Light Bar Options Available!**



**TF051901 - Roof Rack**



**THUMPER FAB**

**Thumper Fab**

5103 Elysian Fields Rd, Marshall, Tx 75672

Customer Service: 903-472-0928

[www.thumperfab.com](http://www.thumperfab.com)