

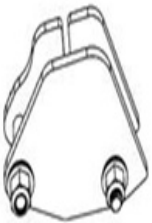
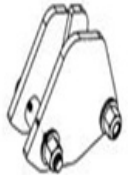
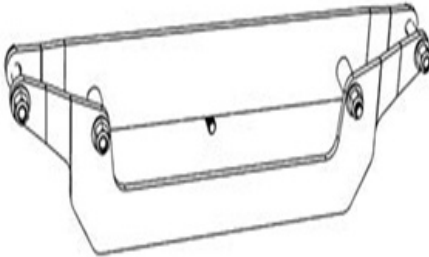


THUMPER FAB

Aluminum Audio Roofs • Roll Cages • UTV Accessories

POLARIS GENERAL XP 1000 3 Inch Lift Kit

SKU: TF031301



Thumper Fab

5103 Elysian Fields Rd, Marshall, TX 75672

Customer Service: 903-472-0928

www.thumperfab.com

Ver. 0622

General XP1000

3 Inch Lift Kit

SKU: TF031301



PARTS

REF	QTY	DESCRIPTION
1	1	FRONT - Outer Lift Bracket
2	1	FRONT - Inner Lift Bracket
3	2	REAR - Outer Lift Bracket
4	2	REAR - Inner Lift Bracket
5	2	Long Spacer
6	2	Short Spacer
7	x	Hardware Kit
A	4	M10-1.5 x 65mm Flange Bolt
B	4	M10-1.5 x 60mm Flange Bolt
C	8	M10-1.5 Flange Lock Nut
D	2	Polaris General Steering Stop

TOOLS

- Jack
- Jackstands
- Ratchet
- 15mm Socket
- 15mm Wrench
- Needle Nose Pliers
- Snips



BEFORE YOU BEGIN

If you do not feel comfortable installing your Thumper Fab Lift Kit please see your nearest Polaris® Dealer for installation.

INSTALLATION INSTRUCTIONS

****Washers in Photos are not used****

Front Lift Installation

Remove the Tires

Place the Unit into park. Use a jack and jackstands to lift and secure the unit, then remove the tires.

Remove Upper Shock Bolts

Remove the upper shock mount bolt using a 15mm socket and 15mm wrench. Once the bolts have been removed, allow shocks to hang down away from the unit on both sides.

Remove Wire Clamps

Use needle nose pliers to remove the press in wire clamps from the frame on both the driver and passenger side. Once pressed in wire clamps have been removed from both sides of the frame, allow wires to hang down freely for additional clearance (**FIG 1**).

Drivers Side

Passenger Side

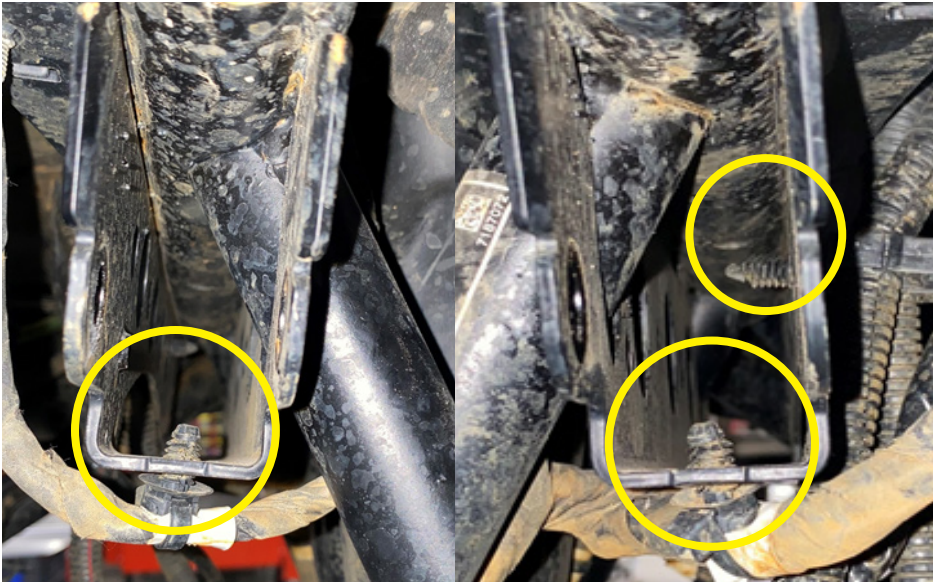


FIG 1 - Remove Wire Clamps with Needle Nose Pliers

INSTALLATION INSTRUCTIONS

Install FRONT - Front and Rear Lift Brackets

Slide the FRONT - Front and Rear Lift Brackets (**1&2**) through the frame. Use M10-1.5 x 65mm flange bolts (**A**) to slide through FRONT - Outer Lift Bracket (**1**) into long spacer (**5**) and through FRONT - Inner Lift Bracket (**2**). Thread M10-1.5 flange lock nuts (**C**) onto flange bolt (**A**) to hold brackets in place, do not fully tighten (**FIG 2**).



FIG 2 - Install FRONT - Inner and Outer Lift Brackets using 15mm Socket and 15mm Wrench

INSTALLATION INSTRUCTIONS

Reinstall Top Shock Mount

Using M10-1.5 x 60mm flange bolts (**B**) to slide through FRONT - Outer Lift Bracket (**1**) into upper shock bushing and through FRONT - Inner Lift Bracket (**2**) Thread and tighten M10-1.5 flange lock nuts (**C**) onto M10-1.5 x 60mm flange bolts (**B**) using 15mm socket and mm wrench. Once tight, use 15mm socket and 15mm wrench to tighten M10-1.5 x 65mm flange bolts (**A**) (**FIG 3**).



FIG 3 - Reinstall shock and tighten Flange Bolts (A&B) using 15mm Socket and 15mm Wrench

INSTALLATION INSTRUCTIONS

Install Polaris General Steering Stops

Locate and cut the inner zip-tie that holds the steering boot in place (**FIG 4**). Pull back the steering boot and install the Polaris steering stop (**D**) onto the worm gear on both sides of the steering rack. Use the provided zip-tie to reseal the steering boot (**FIG 5**).



FIG 4 - Locate and cut Zip Tie using Snips



FIG 5 - Press Steering Stop (D) onto Worm Gear Shaft

Check Toe Alignment

Check the toe and realign the steering if necessary. Torque all the fasteners to factory specifications.

INSTALLATION INSTRUCTIONS

Rear Lift Installation

Remove Upper Shock Bolts

Remove the upper shock mount bolt using a 15mm socket and a 15mm wrench. Once the bolt has been removed, allow the shocks to hang down away from the unit on both sides (**FIG 6**).



FIG 6 - Remove the Upper Shock Mounting Bolt using 15mm Wrench and 15mm Socket

Install REAR - Inner and Outer Lift Brackets

Slide the REAR - Inner Lift Bracket (**4**) into place by aligning the slot on the bracket with the frame. Slide the M10-1.5 x 65mm flange bolt (**A**) into REAR-Rear Lift Bracket (**4**) (**FIG 7**).

INSTALLATION INSTRUCTIONS

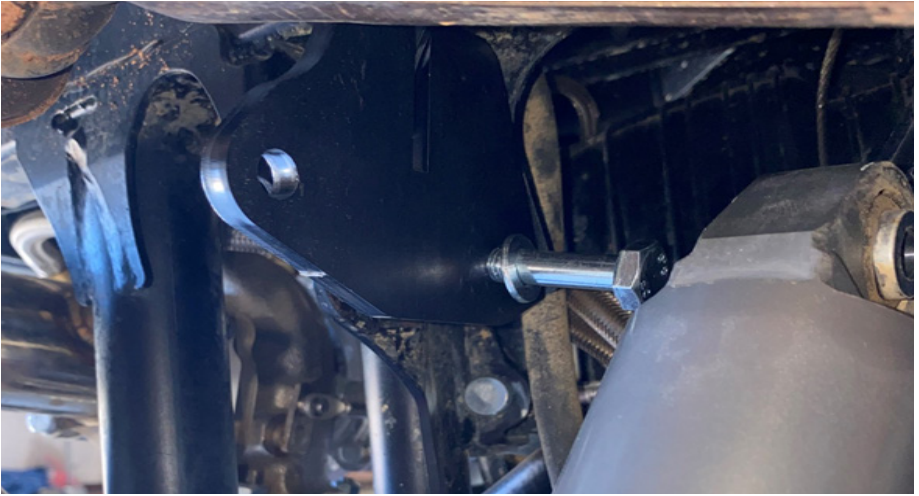


FIG 7 - Place REAR - Inner Lift Bracket (4) into place with M10-1.5 x 65mm Flange Bolt (A)

Install the REAR - Outer Lift Bracket (3) by sliding M10-1.5 x 65mm flange bolt (A) through frame and short spacer (6) (FIG 8). Insert flange bolt (A) through bracket (3) into M10-1.5 flange lock nut (C) (FIG 9). Do not fully tighten.



(FIG 8) Install Short Spacer (6) inside frame rails



(FIG 9) Install REAR - Outer Lift Bracket using 15mm Socket and 15mm Wrench

INSTALLATION INSTRUCTIONS

Reinstall Top Shock Mount

Using M10-1.5 x 60mm flange bolts (**B**) to slide through REAR - Inner Lift Bracket (**4**) into upper shock bushing and through REAR - Outer Lift Bracket (**3**) Thread and tighten M10-1.5 flange lock nuts (**C**) onto M10-1.5 x 60mm flange bolts (**B**) using 15mm socket and 15mm wrench. Once tight, use 15mm socket and 15mm wrench to tighten M10-1.5 x 65mm flange bolts (**A**) (**FIG 10**).



FIG 10 - Tighten REAR - Inner and Outer Lift Brackets (3&4) into place using 15mm Socket and 15mm Wrench

Reattach the Tires

Reattach the tires and torque lug nuts to factory specifications. Remove the jack stands and lower the vehicle onto the ground.

The installation of products sold or manufactured by Thumper Fab including, but not limited to suspension components such as lift kits, control arms, frame stiffener kits, roofs, roll cages, and tires that exceed the original specifications for the vehicle, may change the vehicle's center of gravity and handling characteristics both on- and off-road. You are aware that the installation of tires that are larger than original vehicle specifications may reduce the effectiveness of the braking system. Use of these products may place added stress to the original factory vehicle components which could cause them to weaken or possibly fail.

Products sold or manufactured by Thumper Fab are intended for off-road use only. Operation of a vehicle modified with these products on a road could result in serious bodily injury or death, and such operation may violate the laws of your state or municipality. You agree to operate your vehicle exclusively in the manner intended by the vehicle manufacturer. You agree that failure to safely and reasonably operate your vehicle could result in serious bodily injury or death, and that, as a result of installation of this product(s) to your vehicle, extreme care must be taken to prevent vehicle rollover or loss of control, which may be more likely to occur as a result of said modifications. You will avoid unsafe maneuvers, including sudden sharp turns or other abrupt maneuvers, which could make a vehicular accident more likely. You understand that Thumper Fab is not responsible or liable for any damages or any injuries to yourself or your passengers that could occur upon possible accidents due to driver error, incorrect installations, bad judgment, incompatibility with other aftermarket accessories or natural disasters to the fullest extent allowable by law. You will have all vehicle occupants fasten seatbelts, if equipped, and wear proper safety equipment, such as DOT approved helmet and eye protection prior to operating the vehicle. You understand and acknowledge that failure to wear proper safety equipment may increase the risk of serious bodily injury or death to yourself and any passengers.

Proper installation of products sold or manufactured by Thumper Fab requires knowledge of the factory recommended procedures for removal and installation of original equipment components. Installation of these products without proper knowledge and experience may affect the performance of these components and the safety of the vehicle and cause serious bodily injury or death. It is strongly recommended that a certified mechanic familiar with the installation of similar components perform the product(s) installation.

Prior to installing any products sold or manufactured by Thumper Fab, you will perform or cause to be performed an inspection of their vehicle to confirm its condition is suitable for the installation of these products. A proper inspection of the vehicle includes confirmation that the vehicle has not been in a collision and is free of corrosion. If the vehicle is suspected to have been in a collision or misused, or is otherwise unsuitable for modification, you will not install the product(s). You will continue to inspect the vehicle prior to each use to confirm its condition is suitable for its intended use, and you acknowledge that the failure to do so may result in serious bodily injury or death, as well as damage to the vehicle itself.

You will install any warning labels provided with the product so it may be prominently seen by yourself and all passengers. You will notify all passengers of the modifications performed to your vehicle prior to operation.

Insurance companies may handle coverage of a modified vehicle differently. Please check with your insurance carrier prior to modifying the vehicle to ensure your coverage remains sufficient.

Installation of this product(s) may void your vehicle warranty. If this is a concern, please check with the manufacturer or dealer before purchase or installation of this product(s).



THUMPER FAB

Thumper Fab

5103 Elysian Fields Rd, Marshall, TX 75672

Customer Service: 903-472-0928

www.thumperfab.com