

Using the Quick Clamps

Loosen knob of the clamp and slide the t-nut portion into the desired t-nut slot on the CRC System aluminum section. Swing the clamp arm around your vehicle crossbar, insert threaded rod into the lock body and knob assembly, and turn clockwise to secure to the CRC System and crossbar member. Do NOT overtighten.

Repeat process for the second clamp. To lock clamps, align the small arrows on the clamp knob and the clamp lock body. Insert clamp key and turn key clockwise to lock in place. Note: the clamps will NOT lock if arrows are not aligned.



CRC SYSTEM

Get In Touch

Mailing Address
Trxstle
2812 Pacific Ave SE
Olympia, WA 98501

Phone
(360) 481-8216
Email
sales@trxstle.com

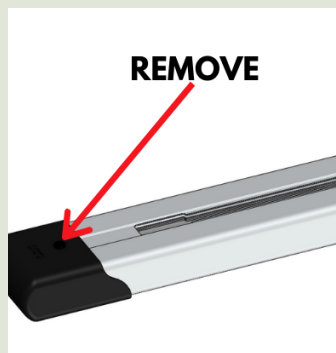
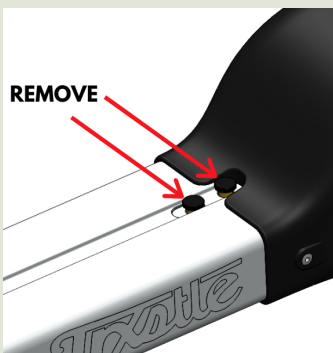


CRC SYSTEM

USER MANUAL

Please read this handout in its entirety to ensure no damage occurs to you or your product during use.

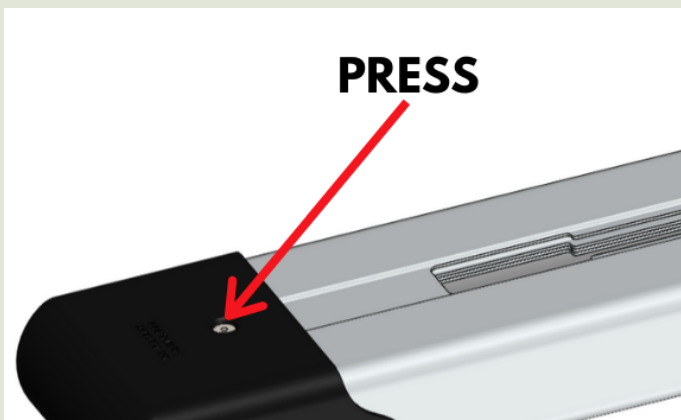
Have a question? Give us a call or email us - we are always happy to help!



Opening the CRC System

IMPORTANT: Before opening the CRC System, **REMOVE ALL THREE (3) THUMB SCREWS** (shown above) from the spring buttons and set them aside.

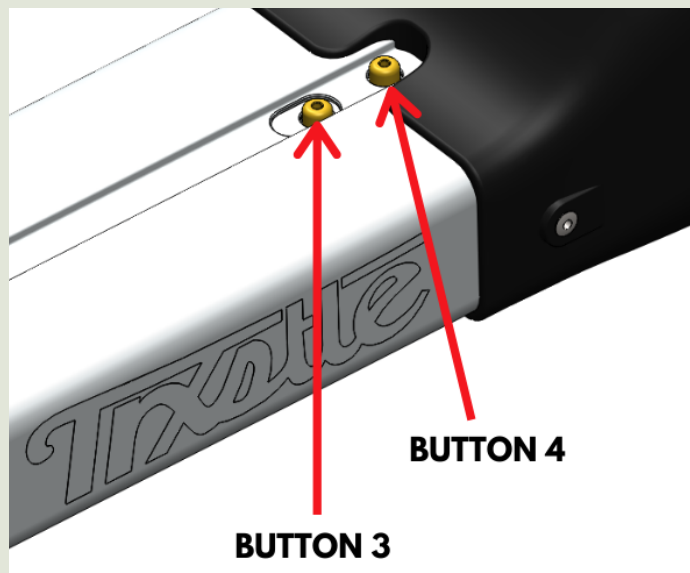
To open your CRC System from the collapsed position, press down on the nose piece button 1 (shown below) and pull the forward tube away from the device until you see the STOP label and the tube clicks into place. Pull using the plastic nose piece. You are now in 1/2 length.



Extending the CRC System

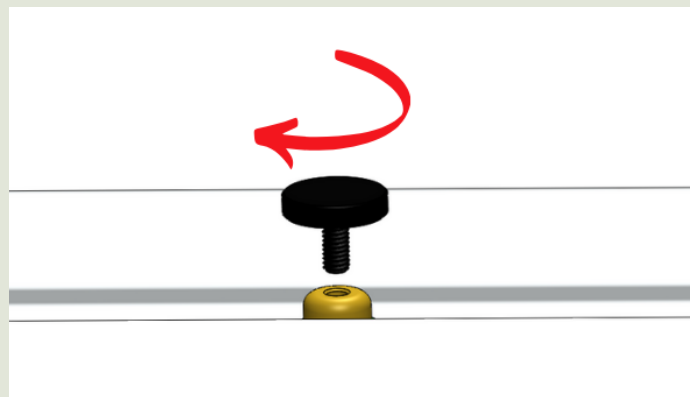
To extend the CRC System to 3/4 and full length, follow the order listed below. Images for reference are shown to the right.

1. Press button 3 and extend the tube until the STOP label is shown and it clicks into place.
2. Then, press button 4 and extend the final tube until the STOP label is shown and it clicks into place.



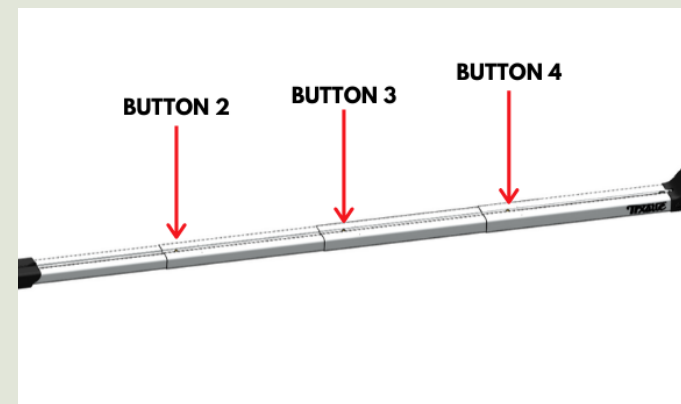
Thumb Screw Security

Optional: Once the CRC SYstem is extended to your preferred length, insert the thumb screws in each exposed button to prevent the button from being depressed accidentally.



Important Info

1. Make sure your fly rods are removed from the CRC before collapsing
2. Thumb screws and clamps must be removed before telescoping the CRC System.
3. The CRC System can be mounted in any length configuration. Please follow guidelines at Trxstle.com for rack fitment and recommended configuration.



Collapsing the CRC System

IMPORTANT: Before collapsing the CRC System, **REMOVE ALL THUMB SCREWS** from the spring buttons and set them aside.

To collapse the CRC System, start at the forward most section (furthest from the reel housing), depress spring button 2 and collapse the aluminum section inside the next largest aluminum section. Repeat process, working your way from the smallest to largest aluminum section, until buttons 3 & 4 are returned to their original position and locked in place.

Next, install the thumb screws in the spring buttons for storage and to securely hold the CRC System in the closed state.

