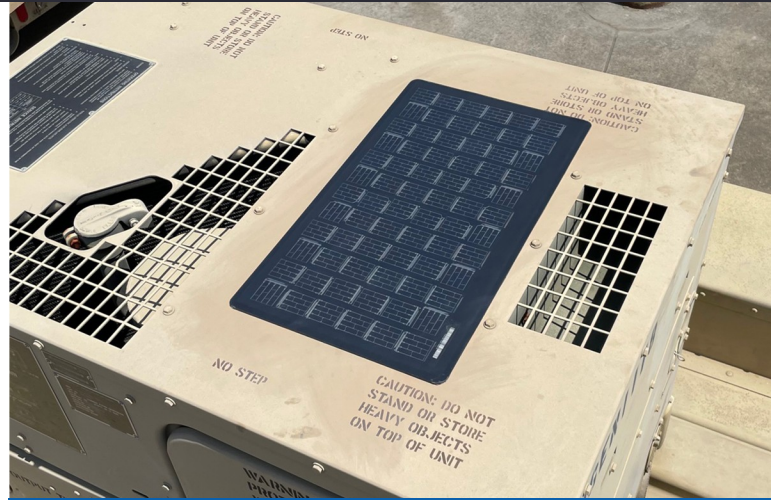


## Canadus SS-20 | Sure+Start 20 Watt Kit

Battery Management System For All Generators, Portable HVAC Systems and All Other Light To Medium Vehicles and Equipment

### DEAD BATTERIES JEOPARDIZE YOUR MISSION.

Stop wasting money replacing dead batteries. The Canadus Sure+Start Battery Solution solves the problem of undercharged batteries and maintains mission readiness of critical equipment. Sure+Start reduces your maintenance time, lead-acid battery consumption, and no-start occurrences for mission essential vehicles and equipment.

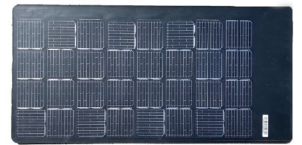


**“The US Army spends \$80M per year replacing dead batteries.”**

## THE KIT

### MILITARY GRADE SOLAR PANEL

-Durable, flexible, and nonglare, the high efficiency panel charges the batteries while the vehicle is not running or connected to shoreline power. Walk on it, drop tools on it, even shoot it—it'll keep charging.



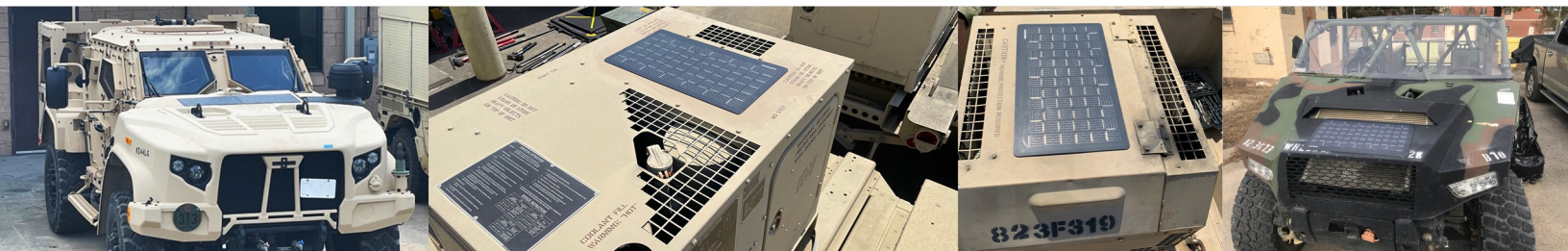
### BALANCING CHARGE CONTROLLER

-The charge controller is custom to the battery pack and designed for 12v, 24v or 12v+ 24v vehicles.



### BATTERY RECONDITIONER

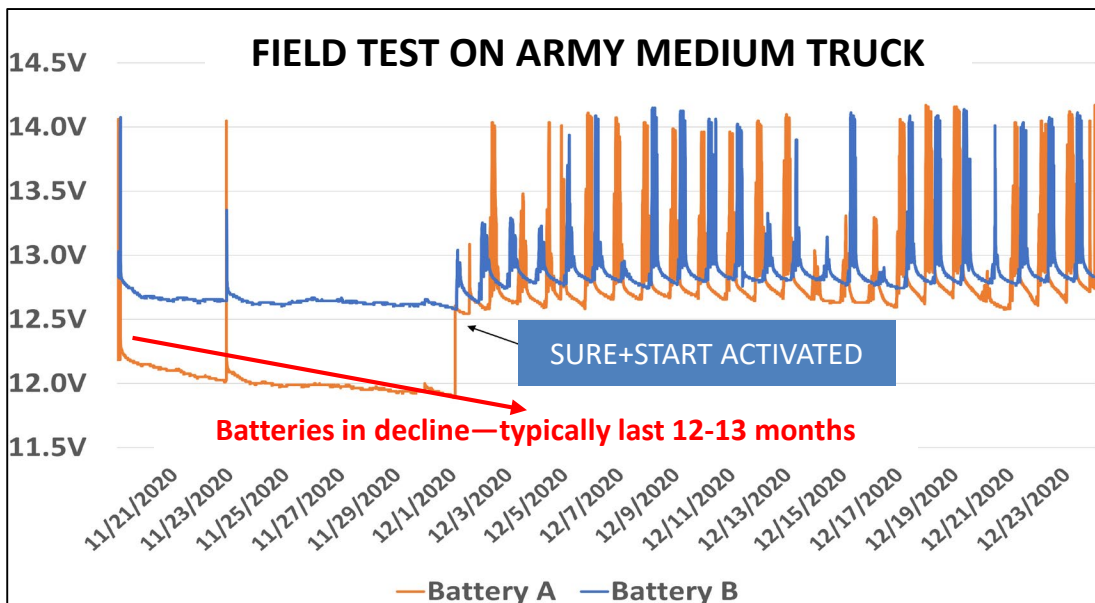
- The Canadus HD-1224 Battery Reconditioner eliminates lead sulfate buildup to double the life of your batteries.



## Advanced solar panel technology + battery reconditioning

- ✓ 80% lighter than glass panels
- ✓ 50X more durable than Bus Bar
- ✓ 2.5X Power Density vs. Thin Film
- ✓ 20% more energy in real world conditions
- ✓ 200% extended battery life
- ✓ 50% extended alternator life durable than traditional Bus Bar
- ✓ 25% extended starter life

**Delivers fewer jump starts, increased equipment uptime and lower maintenance costs.**



| Specifications   |   |
|------------------|---|
| Output           | 20A; 12V/24V                                    |
| Panel Dimensions | 11.75" x 20.875"                                |
| Installation     | Peel & stick self-adhesive or fastener mounting |
| Wiring           | Includes plug-n-play 10' cable                  |

**Order at: <https://teleswivel.com/collections/all>  
Coming soon on GSA Advantage®**