



2 Valve Manifold

MV-2R1

Futuristic Technologies



www.futuristicclimatecontrols.in



+91-972-381-0294



sales@futuristicclimatecontrols.in



2 Valve Manifold Remote Mount

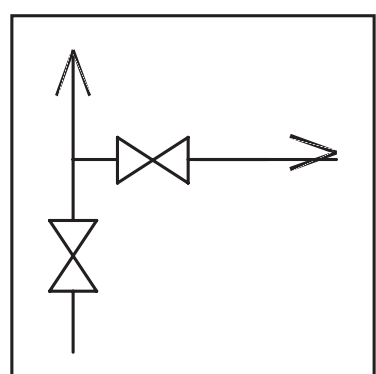
6,000 psi and 10,000 psi Rated

These are two valve isolation manifold with remote mounting (pipe to pipe) feature.

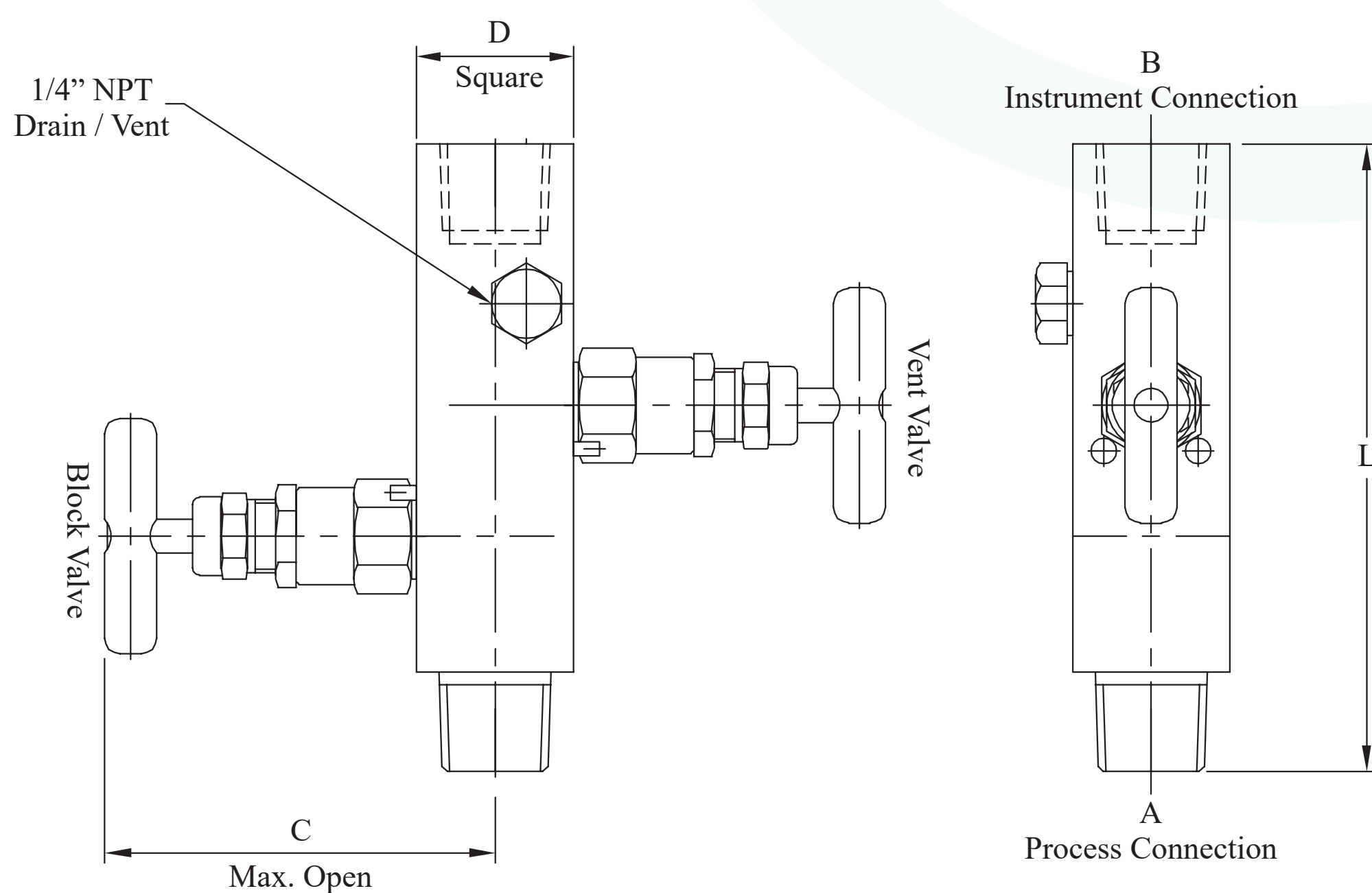
Have one process isolation valve and one drain/vent valve.

Standard model has one inlet of 1/2" and one outlet of 1/2".

Diagram :



Schematic
Diagram



Features :

- 1 x isolation and 1x vent valve for instrument bleeding.
- All valves have 2-piece non-rotating hardened (17-4PH) tips as standard for bubble tight shut off & long service life.
- Metal to Metal body bonnet seal for high pressure and high temperature sealing.
- Temperature range 100 °C to 230 °C (400 °C with G option).
- Available in 316 Stainless steel, Monel, Duplex & other exotic materials.
- Complete material traceability.
- Also available with material compliance to NACE MR-01-75.



Part No.	A-Process Conn.	B-Instrument Conn.	C	D	L
MV 2R 1 8N	1/2" NPT (M)	1/2" NPT (F)	84	32	115
MV 2R 1 4N	1/4" NPT (M)	1/4" NPT (F)	84	32	115
MV 2R 1 8N10K	1/2" NPT (M)	1/2" NPT (F)	84	32	115
MV 2R 1 4N10K	1/4" NPT (M)	1/4" NPT (F)	84	32	115

Note :

- 1) For BSPT connection use R instead of N. eg. [MV 2R 1 8R](#)
- 2) For temperature rating of 400 °C, Grafoil packing add - G to Part no.
- 3) All dimensions are in Millimeter and for reference only.
- 4) Valve open tolerance is ±2mm and other ±0.5mm.

