

VeriTick Test Kit Instructions

IMPORTANT – PLEASE READ BEFORE USE

- Use the VeriTick Test Kit to detect the presence of *Borrelia* bacteria in ticks.
- Do not attempt to diagnose Lyme disease in humans nor attempt to detect *Borrelia* bacteria in patient samples using the VeriTick Test Kit.
- Please read the instructions carefully. Failure to do so may lead to an incorrect result.
- Each test is intended for single-use only. However, multiple ticks removed from a person or pet may be examined simultaneously using a single test.
- Do not use test after the specified expiration date or if the packaging has been damaged or opened.
- Use test strip immediately after opening strip pouch.
- After using the test, all contents may be disposed in a common trash bin.

WHAT IS A TICK?

A tick is an arachnid arthropod parasite, not an insect. Ticks live off the blood of humans and animals. They can be very harmful as they are known to carry and transmit viruses, bacteria and other pathogens. The deer tick (*Ixodes scapularis*) is a leading transmitter of the Lyme disease-causing bacterium, *Borrelia burgdorferi*.

WHAT IS LYME DISEASE?

Lyme Disease, sometimes referred to as *Lyme borreliosis*, is a common tick-borne disease prevalent in the northern hemisphere caused by the spiral bacteria of the *Borrelia* family that reside in the gut of some tick species. Infection can lead to serious health problems if not treated. There is no vaccine for Lyme disease. Thus, it is important to remove a tick as soon as possible.

HOW TO REMOVE A TICK

If bitten by a tick, removal within eight hours of contact is advised.

1. Do not attempt to anesthetize the tick with alcohol or drugs. Do not attempt to heat the tick in any way. Doing so will cause the tick to go into shock and expel its gut contents, which may include pathogens.
2. To remove a tick, first use a pair of fine-tipped tweezers to grasp the tick as close to skin's surface as possible. Then, pull upward with even pressure with caution to avoid crushing of the tick. Never use fingers to remove a tick.
3. The tick may be stored in a plastic container or bag before testing. After removing the tick, clean the skin around the bite area with rubbing alcohol or soap and water. Thoroughly wash hands after any contact with skin or ticks.

WHEN TO USE THE TEST

A tick attached to the skin may or not be swollen when noticed. It is advised to test the tick immediately whether swollen or not. This test provides a reliable result for the presence of *B. burgdorferi* bacteria **within 20 minutes**. If a test result is positive, seek immediate attention from a doctor for proper diagnosis of Lyme disease symptoms and for treatment.

STORAGE & SHELF LIFE

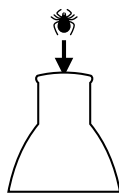
Store contents of this kit at a temperature between 2° C and 30° C. It is important that the Test Strip is stored in the sealed pouch until ready for use. Please see the pouch for the use-by date.

TICK TEST CONTENTS

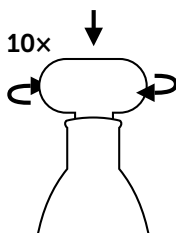
- 1 Test Strip in Pouch
- 1 Tick Disruption Device
- 1 Extraction Buffer Dropper Tube

TICK TEST INSTRUCTIONS

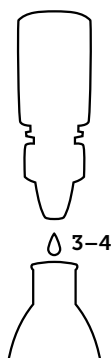
1. Place the removed tick at the bottom of the Tick Disruption Device tube.



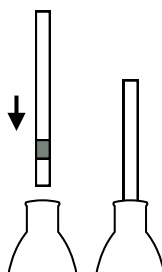
2. Immediately place the pestle firmly into the tick to immobilize the tick. With even, downward pressure, rotate the pestle to grind the tick. **10 full rotations** of the pestle are recommended. Confirm that the tick has been ground to release the contents of the intestines.



3. Remove the pestle from the base and add **3–4 drops** of the Extraction Buffer. Allow **3 minutes** before running the test.



4. Remove the Test Strip from the storage pouch and place into the base, standing up as in the picture, **with the dark green spot facing you and on the lower half of the strip**. It is important that the strip is touching the bottom. Allow the test strip to develop.

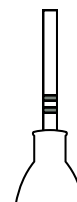


5. The test strip result will be visible after **20 minutes**. The maximum readout time is 30 minutes. All results after 30 minutes are invalid.

INTERPRETING THE TEST

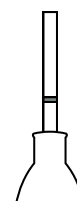
Positive

If 2 lines appear (please see item 1 under Notes), this means the test most likely detected *Borrelia* bacteria in the tick sample. In the event of a positive result, it is recommended you consult your doctor immediately.



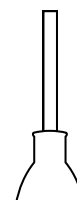
Negative

If 1 line appears, this means the test did not detect *Borrelia* bacteria in the tick sample.



Invalid

If no lines appear, the test result is invalid and test procedure must be repeated using a new test and tick specimen.



NOTES

1. The intensity of the lines may vary, but this does not change the result of the test.
2. Even if the test indicates a negative result, always consult your doctor if Lyme disease symptoms appear. Lyme symptoms may include the following:
 - A red, bull's-eye patterned rash ("Erythema migrans") on the skin around the bite area. This rash appears within three weeks of infections in 30–50% of cases.
 - Other symptoms of prolonged infections include: Loss of muscle tone or "drooping" on one or both sides of the face. Heart palpitations or an irregular heartbeat, arthritis with severe joint pain and swelling, rashes on other areas on the body, severe headache or neck stiffness and other flu-like symptoms