

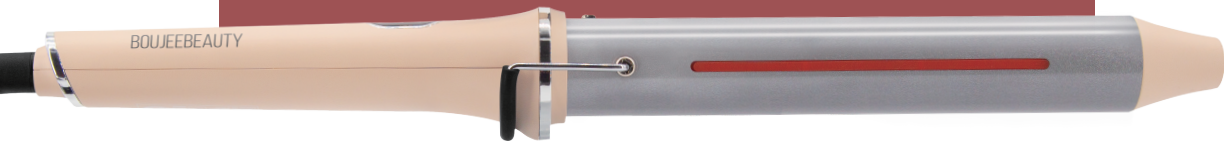


BOUJEEBEAUTY

1.25 Inch Infrared Hair Curling Wand Manual

CUTTING EDGE TECHNOLOGY

Scientific research confirms that infrared heat, at the core of our curling wand, works its magic by gently heating your hair from the inside out. This process of even internal heating results in less heat damage compared to traditional methods. With quicker, more even heating, you can achieve those perfect curls without compromising your hair's health. Plus, the built-in infrared technology helps retain your hair's natural moisture, giving you shiny, frizz-free curls that last longer.



PRODUCT INTRODUCTION

Congratulations on your purchase and thank you! The infrared technology emits a soft infrared heat that penetrates the hair from within, without damage, to achieve the style you want with maximum protection.

SPECIFICATION

Item Specifications
Heater Type : PTC
Variable Temp: 290-410°F
Barrel Size: 1.25 inch
Dual Voltage for world travel: 110-240V

DISPOSAL

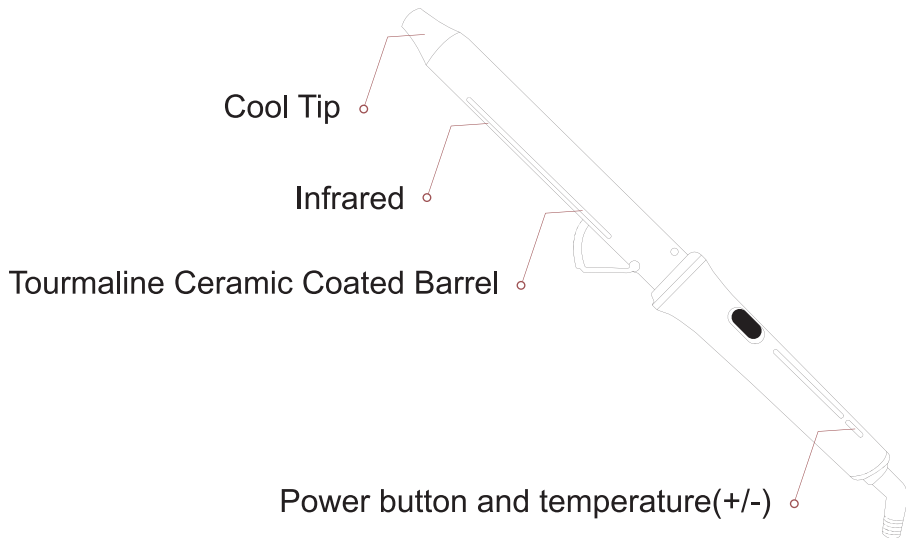
Whenever possible, recycle or discard the product according to your local recycling regulations. Check with your municipal recycling regulations for disposal of electronic devices.

SAFETY

Keep away from water, moisture and wet surfaces. Never leave the hot tool unattended when turned on. When styling is complete always turn off and allow it to cool down before storing.



GENERAL DESCRIPTIONS



WARNINGS

- Regularly check the power cord for any signs of damage, such as fraying, exposed wires or kinks. If the cord is damaged, discontinue use immediately.
- Unplug the product if not in use.
- Do not store the product on surfaces that are not heat resistant.
- Keep the product away from flammable materials.
- Do not allow the power cord to come into contact with the hot part of the tool.
- Keep away from children.



KEEP AWAY FROM CHILDREN

NOTES

- The barrel will reach a high temperature quickly. Prevent the hot surface of the appliance from coming into contact with your skin or scalp directly.
- This product should not be used on wet hair.
- Do not use this product on synthetic hair.
- Unplug the product when not in use.
- Let the product cool down before storing.
- Auto shut-off will activate after one hour.

HOW TO OPERATE

BEFORE OPERATING

Wash hair and make sure your hair is dry. You will get the best results with clean, untangled hair. Do not attempt to curl hair if it is wet.

NOTE

- Do not keep the curler plugged into power when it is not in use.
- Please keep the curler on a heat-resistant surface when it is heating up.
- Please make sure you safely and correctly use the curler to avoid damage to your hair and remove plug after use.

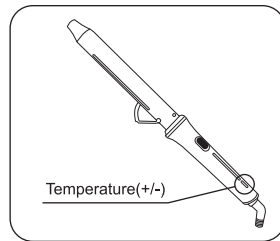
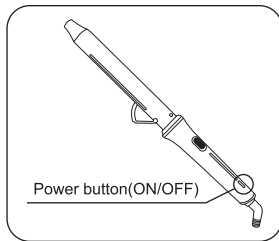
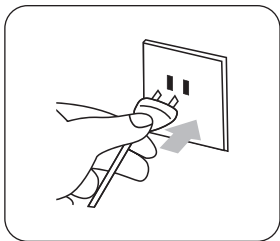
1. Insert plug into socket

2. Turn power on

Curler Will start to heat up LCD will display temperature in real-time. When powered on, the default temperature is 370°F/190°C. For safety reasons, the curler will automatically shut off after one hour.

3. Select a temperature setting that is suitable for your hair type.

- Use the + and - buttons to set the appropriate temperature setting.
- Always select a low setting when you use the curler for the first time.
- For coarse hair, select a medium to high setting 370°F-410°F.
- For fine, medium textured or softly waved hair select a medium to low setting 290°F-370°F.



4. Comb or brush your hair so it is untangled and use a heat protection spray.

5. Use a comb to divide the hair into sections.

Do not put too much hair in one section. It is better to section off the crown area and to curl the hair underneath.

6. Take a section of hair and wrap around the barrel to create curls. Remember the tightness of the curl depends on the width and thickness of your sections and the angle you hold the wand.

7. Rotate the wand to wrap hair toward the root. Hold in place for a few seconds.

TIP: If you want a tight glamorous curl, wrap the whole piece of hair around the barrel. If you want a looser wave, leave the ends out of the clip.

8. Repeat this process throughout your entire head and let the hair cool down. For a longer lasting style, do not comb hair before it cools.

9. After use, turn off the power and allow the curler to cool before storing.



CLEANING AND STORAGE

- Make sure the power is off and the product is unplugged.
- Put the product on a heat resistant surface to cool down.
- Clean with a slightly damp cloth after cooled.
- Never immerse the product in water.
- Do not use sharp or abrasive detergents.
- Do not wrap the power cord around the product.
- Store the product in a place that is dry and away from children.

TROUBLESHOOTING

If the product is not working it may be the failure of the socket. Please check if the power supply has electricity by inserting another product into the outlet. Always check that the power cord is not damaged.

WARRANTY

This warranty is for the original purchaser of the appliance and is non-transferable. The warranty is for 1 year from the date of purchase and does not include damage caused by misuse, accidents, or abuse. This warranty does not cover any shipping or handling charges. If the product is discontinued or no longer available a replacement may be made with a similar product of equal or greater value.

Please contact warranty@boujee-beauty.com for help.