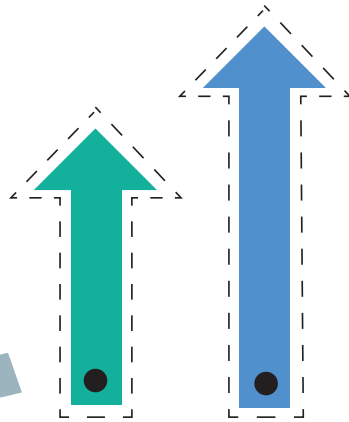


Make a bear clock!

Have fun learning to tell the time with this simple version of our Bear Colours Clock!
Print out this page then ask a grown up to help you carefully cut out all pieces.
Use a spilt pin to join the clock hands onto the nose of the bear.

Share your creations with us!
#tenderleaf
f i p t

Top tip!
No spilt pins?
Ask a grown up to use a drawing pin instead, but make sure to use a piece of blue tack on the reverse to protect your from the sharp edge!



Clock hands



Here's one we made!

