

RAVPOWER



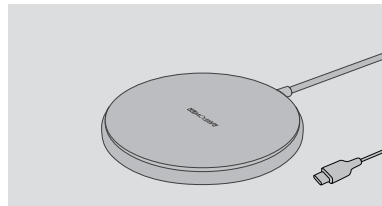
Model: RP-WC012

RAVPower 10W Wireless Charger

User Manual
取扱説明書

WHAT'S IN THE BOX

同梱物と各部の名称



10W Wireless
Charger



20W Wall
Charger



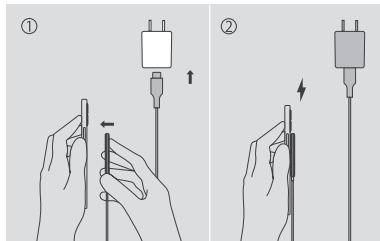
User Manual



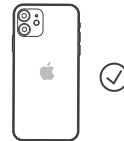
Thank You
Card

Using Your Wireless Charger

ご使用方法



For optimal charging, charge your phone:
最高の充電効果を得るには、以下の携帯ケースをご利用ください:



With no phone case
携帯ケースなし



With cases with MagSafe
MagSafe 対応するケース&カバー

Note:

Metal ring/case, magnetic pad, PopSockets or phone cases with uneven back will affect the charging effect.

注意:

金属製のリング/ケース、マグネットパッド、ポップソкетов・グリップ、または背面が不均一なケースは、充電効果に影響します。

SPECIFICATIONS

製品仕様

Wireless Charger

Input 5V ~ 2A, 9V ~ 2.22A

Output 10W Max

Wall Charger

Input 100-240V ~ 50/60Hz

Output 5V ~ 3A, 9V ~ 2.22A,
12V ~ 1.67A

IMPORTANT SAFETY INSTRUCTIONS

WARNING – When using this product, basic precautions should always be followed, including the following:

- Read **all** the instructions before use.
- Avoid dropping.
- Do not disassemble.
- Do not expose to liquids.
- Do not use if it is damaged or modified.
- Do not expose to fire or extreme temperatures.
- Use the **included original RAVPower adapter only**.
- Dispose as per **local law** and regulations.

RAVPOWER
www.ravpower.com

E-MAIL:
support@ravpower.com

MANUFACTURER
Manufacturer: Shenzhen NearbyExpress Technology Development Co., Ltd.
Address: Floor 7, Building E, Galaxy World Phase II, Shenzhen, China



WARRANTY 保証

	EN	JP
	<ul style="list-style-type: none"> • 18 Month Warranty. • Life-time Support. 	<ul style="list-style-type: none"> ・長期間のカスタマサポート。 ・18ヶ月の安心保証。
	<p>This warranty is void if the defect is caused by:</p> <ul style="list-style-type: none"> • Damage caused by force majeure. • Accidental damage, misuse, abuse, neglect. • Improper repair or alteration by unauthorized persons. • Expired warranty period. 	<p>下記の場合は保証対象になりませんのでご注意ください:</p> <ul style="list-style-type: none"> ・火災、地震、水害、落雷、ガス害、塩害およびその他の天災地変、公害または異常電圧等の外部的事由による故障もしくは損傷の場合。 ・使用上の酷使、管理不足、過失または事故によって生じた故障と認められる場合。 ・当社以外で改造、調整、部品交換等をされた場合。 ・保証期間が切れる場合。

FCC Compliance

NOTE: This equipment has been tested and found to comply with the limits for a Class B digital device, pursuant to part 15 of the FCC Rules. These limits are designed to provide reasonable protection against harmful interference in a residential installation. This equipment generates uses and can radiate radio frequency energy and, if not installed and used in accordance with the instructions, may cause harmful interference to radio communications. However, there is no guarantee that interference will not occur in a particular installation. If this equipment does cause harmful interference to radio or television reception, which can be determined by turning the equipment off and on, the user is encouraged to try to correct the interference by one or more of the following measures:

- Reorient or relocate the receiving antenna.
- Increase the separation between the equipment and receiver.
- Connect the equipment into an outlet on a circuit different from that to which the receiver is connected.
- Consult the dealer or an experienced radio/TV technician for help.

Changes or modifications not expressly approved by the party responsible for compliance could void the user's authority to operate the equipment.

This device complies with Part 15 of the FCC Rules. Operation is subject to the following two conditions:

- (1) this device may not cause harmful interference, and
- (2) this device must accept any interference received, including interference that may cause undesired operation.

FCC Radiation Exposure Statement

This equipment complies with FCC radiation exposure limits set forth for an uncontrolled environment. This equipment shall be installed and operated with minimum distance 20cm between the radiator & body.

WEEE Compliance

DO not to dispose of product as unsorted municipal waste and to collect such WEEE separately, for proper treatment, recovery and recycling, please take this product(s) to designated collection points where it will be accepted free of charge. Please contact your local authority for further details of your nearest designated collection station.

尺寸:60*60mm

折页

材质:128克铜版纸