

RAVPower

www.ravpower.com

ASIA PACIFIC

E-mail : support.jp@ravpower.com(JP)

JP Importer: 株式会社SUNVALLEY JAPAN

Address: 〒104-0032 東京都中央区八丁堀 3 丁目18-6 PMO
京橋東9F

EUROPE

E-mail:

support.uk@ravpower.com(UK)

support.de@ravpower.com(DE)

support.fr@ravpower.com(FR)

support.es@ravpower.com(ES)

support.it@ravpower.com(IT)

EU Importer : ZBT International Trading GmbH

Address: Halstenbeker Weg 98C, 25462 Rellingen,
Deutschland

NORTH AMERICA

E-mail : support@ravpower.com(US)

support.ca@ravpower.com(CA)

Tel : 1-888-456-8468 (Monday-Friday: 9:00-17:00 PST)

US Distributor: SUNVALLEYTEK INTERNATIONAL INC.

Address : 46724 Lakeview Blvd, Fremont, CA 94538

MANUFACTURER

Manufacturer: Shenzhen NearbyExpress Technology
Development Co., Ltd

Address: 333 Bulong Road, Shenzhen, China, 518129



MADE IN CHINA

RP-UM002_V1.0

RAVPower

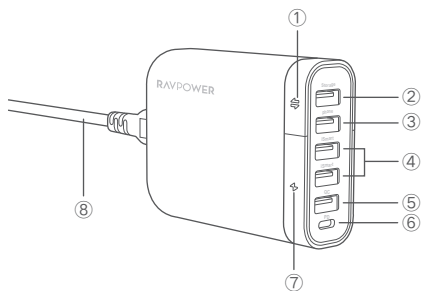
Model: RP-UM002

RAVPower 6-Port USB Charger Filehub

User Guide

CONTENTS

English	01-12
Deutsch	09-16
Français	17-24
Español	25-32
Italiano	33-40
日本語	41-48



EN

Product Diagram

- ① Data Sync Indicator
- ② USB 2.0 Data Sync Port (Storage)
- ③ USB 2.0 Data Sync Port (Phone)
- ④ iSmart Charging Ports
- ⑤ QC3.0 Charging Port
- ⑥ USB-C PD Port
- ⑦ Charging Indicator
- ⑧ Power Cord

EN

Product Diagram

- ① Data Sync Indicator
- ② USB 2.0 Data Sync Port (Storage)
- ③ USB 2.0 Data Sync Port (Phone)
- ④ iSmart Charging Ports
- ⑤ QC3.0 Charging Port
- ⑥ USB-C PD Port
- ⑦ Charging Indicator
- ⑧ Power Cord

EN

Product Diagram

- ① Data Sync Indicator
- ② USB 2.0 Data Sync Port (Storage)
- ③ USB 2.0 Data Sync Port (Phone)
- ④ iSmart Charging Ports
- ⑤ QC3.0 Charging Port
- ⑥ USB-C PD Port
- ⑦ Charging Indicator
- ⑧ Power Cord

EN

Product Diagram

- ① Data Sync Indicator
- ② USB 2.0 Data Sync Port (Storage)
- ③ USB 2.0 Data Sync Port (Phone)
- ④ iSmart Charging Ports
- ⑤ QC3.0 Charging Port
- ⑥ USB-C PD Port
- ⑦ Charging Indicator
- ⑧ Power Cord

EN

Product Diagram

- ① Data Sync Indicator
- ② USB 2.0 Data Sync Port (Storage)
- ③ USB 2.0 Data Sync Port (Phone)
- ④ iSmart Charging Ports
- ⑤ QC3.0 Charging Port
- ⑥ USB-C PD Port
- ⑦ Charging Indicator
- ⑧ Power Cord

EN

Product Diagram

- ① Data Sync Indicator
- ② USB 2.0 Data Sync Port (Storage)
- ③ USB 2.0 Data Sync Port (Phone)
- ④ iSmart Charging Ports
- ⑤ QC3.0 Charging Port
- ⑥ USB-C PD Port
- ⑦ Charging Indicator
- ⑧ Power Cord

CONTENTS

Precautions	01
Package Contents	01
Features	02
1. As a Filehub	02
2. As a Charger	02
How to Use	03
1. Data Backup and Transfer	03
1) Preparations: Download the app	03
2) Using the App	04
· Backup and Free Your Phone Space	04
· Preview and Manage USB Storage	08
· Preview Mobile Phone Storage	08
· Settings	09
2. Charge Your Device	10
Specifications	10
LED Indicators	12
FAQ	12

Precautions

- The device operates correctly only with a specified voltage rating; otherwise it may be damaged.
- Keep away from heat, flammables, poisons, and corrosive substance.
- Keep away from electrical appliances (such as a microwave oven) to avoid electromagnetic interference.
- Keep the charging ports clean.
- When it's idle, store it flat in a location with an ambient temperature of 15°C to 25°C (59°F to 77°F; avoid extreme temperatures).
- Keep away from water, liquid, and moisture.
- Do not drop, knock, or disassemble the unit.
- Keep out of reach of children.

Package Contents

- 1 x USB Charger Filehub with Power Cord
(Model: RP-UMOO2)
- 1 x User Guide

Features

As a Filehub

1) Data Backup: Free Your Phone Space.

Auto and manually backup photos, videos, other files from your mobile / tablet storage to a USB flash drive / HDD drive easily.

2) Data Transfer: Data Transfer Easier than Ever.

Preview and manage USB storage via mobile phone (Play videos, delete files, etc.)

As a Charger

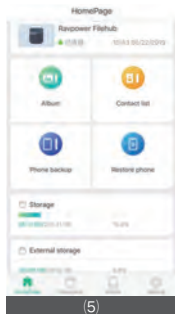
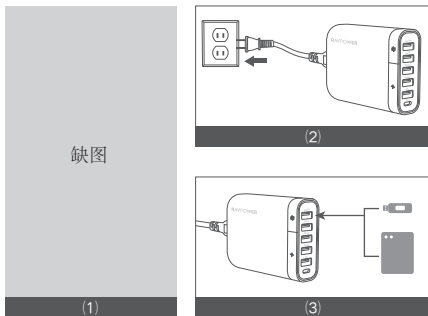
Built with four USB-A charging ports and one USB-C PD port to charge your mobile phone, tablet or ultrabooks with a max charging power of 24W (12V/2A).

How to Use

1. Data Backup and Transfer

Preparations: Download the app

Please download the app before using the product for data transfer.



1) Go to App Store or Google Play, search for “U Hub”,

- tap on it to download the app.
- 2) Plug the power cord to a power outlet. The charging indicator will stay solid white.
 - 3) Plug your USB flash drive / hard drive into the data sync port (storage).
 - 4) Connect your mobile to the other data sync port (phone).
 - 5) Run the app installed on your mobile. Wait until the device finishes reading data. Now you're on the homepage.



Using the App

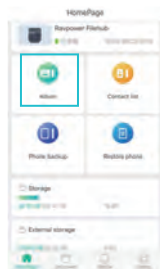
You can find 4 sections on the app: Homepage, Document, Mobile, Settings.

1. Backup and Free Your Phone Space

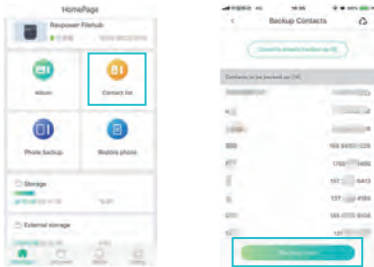
Before you start to backup, there will be a window popping up reminding whether you need to delete the data once it is backed up (excluding when you are backing up contacts).

- 1) Backup photos, music, files and contacts: Back up all files and contacts on your mobile phone with just one tap of the Phone Backup on the homepage. Go to settings to select items you want to backup, once set it will back up the items selected only.

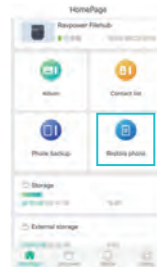
- 2) Backup photos only: Tap Album on the homepage to start backup your photos.



3) Backup contacts only: Tap the Contact List on the homepage to start back your contacts.



5) Restore backup: Tap Restore Phone to copy all the backed up data to your mobile phone.



4) Set auto backup: Go to settings to enable auto backup to automatically backup your mobile files once connected to the device.

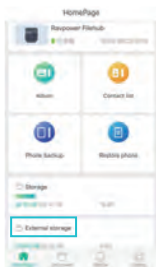


6) Other backup settings (refer to Settings for more details).



2. Preview and Manage USB Storage

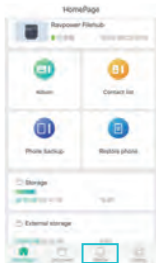
Tap External Storage to access files on the USB storage.



- 1) Play videos, preview photos from USB storage on your phone directly (support most of the video and photo format, finding more details in specifications section).
- 2) Delete files from the USB storage.
- 3) Copy files and file folders.

3. Preview Mobile Phone Storage

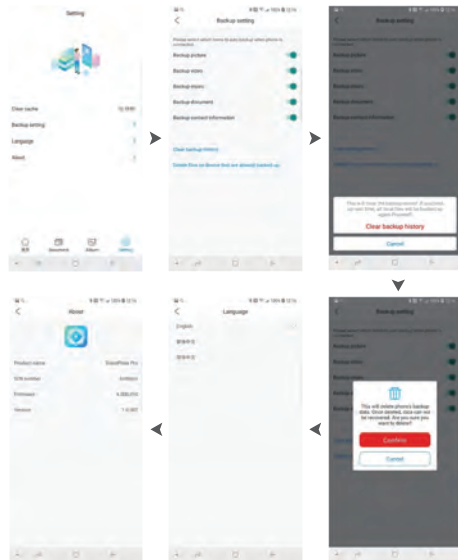
Tap Mobile to access files on your mobile phone.



- 1) Preview files copied from USB storage (find them in Download file folder)
- 2) Preview and copy file from mobile photo to USB storage.

4. Settings

Clear cache, backup setting, language setting, and app information.



5. Charge Your Device

It is recommended to use the PD or QC charging port if you want to charge your device without data transferring to achieve faster charging. Please refer to the Specifications for more details.

Note: USB A QC charging port and USB C PD port share a max power of 24W (12V/2A), when using both ports, the max power would be 12W (5V/2.4A) each.

Specifications

Model	RP-UM002
Input	AC 100V-240V 50/60Hz
Power	60W
USB-A storage Port	5V / 0.9A max Support max. storage format: Fat32, NTFS and exFat Max Capacity: 8TB
USB-A phone Port	Support BC1.2 charging and data transfer, 5V / 1.5A max Support Android XX / iOS XX data transfer (max transfer speed 20MB/s)
USB-A iSmart Port	iSmart charging (max 5V / each 2.4A)

USB-A QC 3.0 port	Support QC charging with a max power of 24W (12V/2A), when using QC port only; Note:Share the max power with the USB C PD port, when using both ports, the max power would be 12W (5V / 2.4A) each
USB-C PD Port	5V, 9V, 12V;12V / 2A Max Support USB C PD charging with a max power of 24W (12V/2A), when using USB C PD port only; Note: share the max power with the USB QC port, when using both ports, the max power would be 12W (5V / 2.4A) each
Total Output	5V 12A
Protection	Overcurrent protection
Temperature & Humidity	5°C to 35°C, 5% to 90% (Non-condensing) (Operating) -20°C to 60°C 5% - 95 % (Non-condensing) (Non-Operating)
Video Format Supported	
Image Format Supported	
Dimensions	
Weight	

LED Indicators

LED Indicator	Working Status
Charging indicator solid on	Connected to power, ready to charge your device
Data sync indicator solid on	Connected to mobile phone or storage devices
Data sync indicator breathing	Data transferring

FAQ

Q: When I run the app, the prompt message “Device not found” just pops up.

A: Please make sure the cable used comes with a data transfer functionality, and plug your USB drive into the data sync port (storage) properly.

Q: When backing up data, the app prompted “Insufficient storage capacity”.

A: There's not enough capacity of your USB flash drive. Please free up space before backing up data.

Q: Charging is really slow.

A: Please charge your devices via the charging ports. The data sync ports support charging with a supply of 5V/0.9A which will charge quite slowly.

EN

CONTENTS

Precautions	01
Package Contents	01
Features	02
1. As a Filehub	02
2. As a Charger	02
How to Use	03
1. Data Backup and Transfer	03
1) Preparations: Download the app	03
2) Using the App	04
· Backup and Free Your Phone Space	04
· Preview and Manage USB Storage	08
· Preview Mobile Phone Storage	08
· Settings	09
2. Charge Your Device	10
Specifications	10
LED Indicators	12
FAQ	12

Precautions

- The device operates correctly only with a specified voltage rating; otherwise it may be damaged.
- Keep away from heat, flammables, poisons, and corrosive substance.
- Keep away from electrical appliances (such as a microwave oven) to avoid electromagnetic interference.
- Keep the charging ports clean.
- When it's idle, store it flat in a location with an ambient temperature of 15°C to 25°C (59°F to 77°F; avoid extreme temperatures).
- Keep away from water, liquid, and moisture.
- Do not drop, knock, or disassemble the unit.
- Keep out of reach of children.

Package Contents

- 1 x USB Charger Filehub with Power Cord
(Model: RP-UMOO2)
- 1 x User Guide

Features

As a Filehub

- 1) Data Backup: Free Your Phone Space.
Auto and manually backup photos, videos, other files from your mobile / tablet storage to a USB flash drive / HDD drive easily.
- 2) Data Transfer: Data Transfer Easier than Ever.
Preview and manage USB storage via mobile phone (Play videos, delete files, etc.)

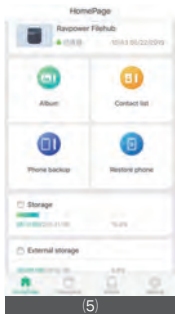
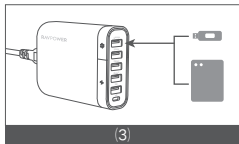
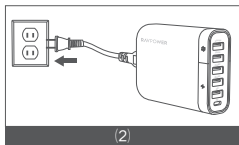
As a Charger

Built with four USB-A charging ports and one USB-C PD port to charge your mobile phone, tablet or ultrabooks with a max charging power of 24W (12V/2A).

How to Use

1. Data Backup and Transfer Preparations: Download the app

Please download the app before using the product for data transfer.



1) Go to App Store or Google Play, search for “U Hub”,

- tap on it to download the app.
- 2) Plug the power cord to a power outlet. The charging indicator will stay solid white.
- 3) Plug your USB flash drive / hard drive into the data sync port (storage).
- 4) Connect your mobile to the other data sync port (phone).
- 5) Run the app installed on your mobile. Wait until the device finishes reading data. Now you're on the homepage.

Using the App

You can find 4 sections on the app: Homepage, Document, Mobile, Settings.

1. Backup and Free Your Phone Space

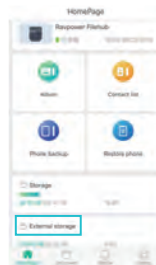
Before you start to backup, there will be a window popping up reminding whether you need to delete the data once it is backed up (excluding when you are backing up contacts).

- 1) Backup photos, music, files and contacts: Back up all files and contacts on your mobile phone with just one tap of the Phone Backup on the homepage. Go to settings to select items you want to backup, once set it will back up the items selected only.

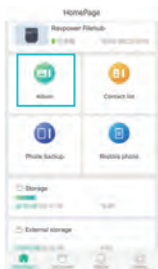


2. Preview and Manage USB Storage

Tap External Storage to access files on the USB storage.



- 2) Backup photos only: Tap Album on the homepage to start backup your photos.



- 1) Play videos, preview photos from USB storage on your phone directly (support most of the video and photo format, finding more details in specifications section).
2) Delete files from the USB storage.
3) Copy files and file folders.

3. Preview Mobile Phone Storage

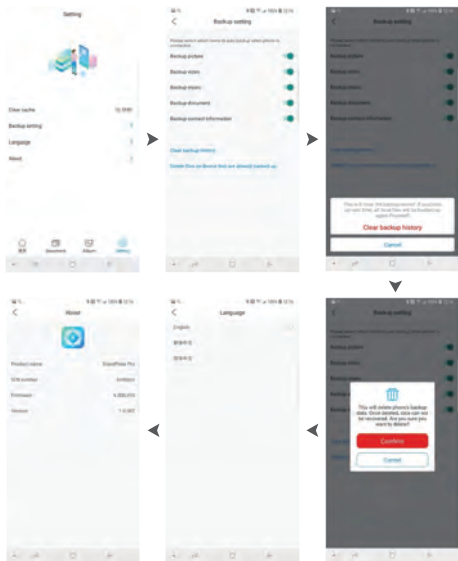
Tap Mobile to access files on your mobile phone.



- 1) Preview files copied from USB storage (find them in Download file folder)
- 2) Preview and copy file from mobile photo to USB storage.

4. Settings

Clear cache, backup setting, language setting, and app information.



5. Charge Your Device

It is recommended to use the PD or QC charging port if you want to charge your device without data transferring to achieve faster charging. Please refer to the Specifications for more details.

Note: USB A QC charging port and USB C PD port share a max power of 24W (12/2A), when using both ports, the max power would be 12W (5V/2.4A) each.

Specifications

Model	RP-UM002
Input	AC 100V-240V 50/60Hz
Power	60W
USB-A storage Port	5V / 0.9A max Support max. storage format: Fat32, NTFS and exFat Max Capacity: 8TB
USB-A phone Port	Support BC1.2 charging and data transfer, 5V / 1.5A max Support Android XX / iOS XX data transfer (max transfer speed 20MB/s)
USB-A iSmart Port	iSmart charging (max 5V / each 2.4A)

USB-A QC 3.0 port	Support QC charging with a max power of 24W (12V/2A), when using QC port only; Note:Share the max power with the USB C PD port, when using both ports, the max power would be 12W (5V / 2.4A) each
USB-C PD Port	5V, 9V, 12V; 12V / 2A Max Support USB C PD charging with a max power of 24W (12V/2A), when using USB C PD port only; Note: share the max power with the USB QC port, when using both ports, the max power would be 12W (5V / 2.4A) each
Total Output	5V 12A
Protection	Overcurrent protection
Temperature & Humidity	5°C to 35°C, 5% to 90% (Non-condensing) (Operating) -20°C to 60°C 5% - 95 % (Non-condensing) (Non-Operating)
Video Format Supported	
Image Format Supported	
Dimensions	
Weight	

LED Indicators

LED Indicator	Working Status
Charging indicator solid on	Connected to power, ready to charge your device
Data sync indicator solid on	Connected to mobile phone or storage devices
Data sync indicator breathing	Data transferring

FAQ

Q: When I run the app, the prompt message “Device not found” just pops up.

A: Please make sure the cable used comes with a data transfer functionality, and plug your USB drive into the data sync port (storage) properly.

Q: When backing up data, the app prompted “Insufficient storage capacity”.

A: There's not enough capacity of your USB flash drive. Please free up space before backing up data.

Q: Charging is really slow.

A: Please charge your devices via the charging ports. The data sync ports support charging with a supply of 5V/0.9A which will charge quite slowly.

CONTENTS

Precautions	01
Package Contents	01
Features	02
1. As a Filehub	02
2. As a Charger	02
How to Use	03
1. Data Backup and Transfer	03
1) Preparations: Download the app	03
2) Using the App	04
· Backup and Free Your Phone Space	04
· Preview and Manage USB Storage	08
· Preview Mobile Phone Storage	08
· Settings	09
2. Charge Your Device	10
Specifications	10
LED Indicators	12
FAQ	12

Precautions

- The device operates correctly only with a specified voltage rating; otherwise it may be damaged.
- Keep away from heat, flammables, poisons, and corrosive substance.
- Keep away from electrical appliances (such as a microwave oven) to avoid electromagnetic interference.
- Keep the charging ports clean.
- When it's idle, store it flat in a location with an ambient temperature of 15°C to 25°C (59°F to 77°F; avoid extreme temperatures).
- Keep away from water, liquid, and moisture.
- Do not drop, knock, or disassemble the unit.
- Keep out of reach of children.

Package Contents

- 1 x USB Charger Filehub with Power Cord
(Model: RP-UMOO2)
- 1 x User Guide

Features

As a Filehub

1) Data Backup: Free Your Phone Space.

Auto and manually backup photos, videos, other files from your mobile / tablet storage to a USB flash drive / HDD drive easily.

2) Data Transfer: Data Transfer Easier than Ever.

Preview and manage USB storage via mobile phone (Play videos, delete files, etc.)

As a Charger

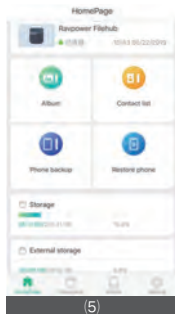
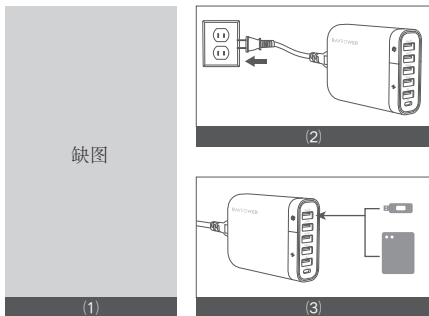
Built with four USB-A charging ports and one USB-C PD port to charge your mobile phone, tablet or ultrabooks with a max charging power of 24W (12V/2A).

How to Use

1. Data Backup and Transfer

Preparations: Download the app

Please download the app before using the product for data transfer.



1) Go to App Store or Google Play, search for “U Hub”,

- tap on it to download the app.
- 2) Plug the power cord to a power outlet. The charging indicator will stay solid white.
- 3) Plug your USB flash drive / hard drive into the data sync port (storage).
- 4) Connect your mobile to the other data sync port (phone).
- 5) Run the app installed on your mobile. Wait until the device finishes reading data. Now you're on the homepage.



Using the App

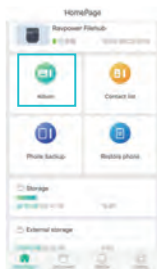
You can find 4 sections on the app: Homepage, Document, Mobile, Settings.

1. Backup and Free Your Phone Space

Before you start to backup, there will be a window popping up reminding whether you need to delete the data once it is backed up (excluding when you are backing up contacts).

- 1) Backup photos, music, files and contacts: Back up all files and contacts on your mobile phone with just one tap of the Phone Backup on the homepage. Go to settings to select items you want to backup, once set it will back up the items selected only.

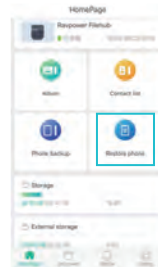
- 2) Backup photos only: Tap Album on the homepage to start backup your photos.



3) Backup contacts only: Tap the Contact List on the homepage to start back your contacts.



5) Restore backup: Tap Restore Phone to copy all the backed up data to your mobile phone.



4) Set auto backup: Go to settings to enable auto backup to automatically backup your mobile files once connected to the device.



6) Other backup settings (refer to Settings for more details).



2. Preview and Manage USB Storage

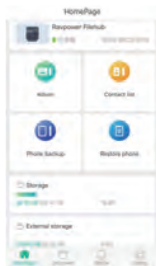
Tap External Storage to access files on the USB storage.



- 1) Play videos, preview photos from USB storage on your phone directly (support most of the video and photo format, finding more details in specifications section).
- 2) Delete files from the USB storage.
- 3) Copy files and file folders.

3. Preview Mobile Phone Storage

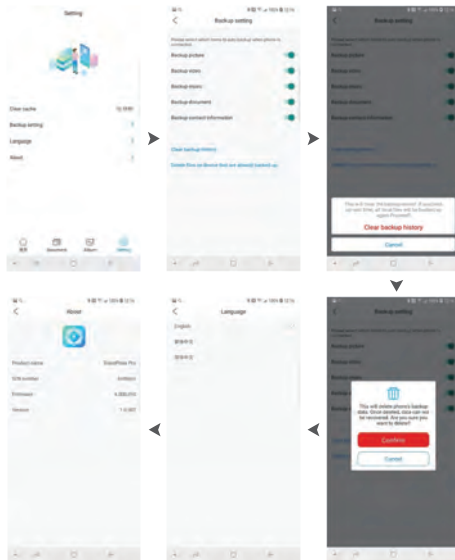
Tap Mobile to access files on your mobile phone.



- 1) Preview files copied from USB storage (find them in Download file folder)
- 2) Preview and copy file from mobile photo to USB storage.

4. Settings

Clear cache, backup setting, language setting, and app information.



5. Charge Your Device

It is recommended to use the PD or QC charging port if you want to charge your device without data transferring to achieve faster charging. Please refer to the Specifications for more details.

Note: USB A QC charging port and USB C PD port share a max power of 24W (12V/2A), when using both ports, the max power would be 12W (5V/2.4A) each.

Specifications

Model	RP-UM002
Input	AC 100V-240V 50/60Hz
Power	60W
USB-A storage Port	5V / 0.9A max Support max. storage format: Fat32, NTFS and exFat Max Capacity: 8TB
USB-A phone Port	Support BC1.2 charging and data transfer, 5V / 1.5A max Support Android XX / iOS XX data transfer (max transfer speed 20MB/s)
USB-A iSmart Port	iSmart charging (max 5V / each 2.4A)

USB-A QC 3.0 port	Support QC charging with a max power of 24W (12V/2A), when using QC port only; Note:Share the max power with the USB C PD port, when using both ports, the max power would be 12W (5V / 2.4A) each
USB-C PD Port	5V, 9V, 12V;12V / 2A Max Support USB C PD charging with a max power of 24W (12V/2A), when using USB C PD port only; Note: share the max power with the USB QC port, when using both ports, the max power would be 12W (5V / 2.4A) each
Total Output	5V 12A
Protection	Overcurrent protection
Temperature & Humidity	5°C to 35°C, 5% to 90% (Non-condensing) (Operating) -20°C to 60°C 5% - 95 % (Non-condensing) (Non-Operating)
Video Format Supported	
Image Format Supported	
Dimensions	
Weight	

LED Indicators

LED Indicator	Working Status
Charging indicator solid on	Connected to power, ready to charge your device
Data sync indicator solid on	Connected to mobile phone or storage devices
Data sync indicator breathing	Data transferring

FAQ

Q: When I run the app, the prompt message “Device not found” just pops up.

A: Please make sure the cable used comes with a data transfer functionality, and plug your USB drive into the data sync port (storage) properly.

Q: When backing up data, the app prompted “Insufficient storage capacity”.

A: There's not enough capacity of your USB flash drive. Please free up space before backing up data.

Q: Charging is really slow.

A: Please charge your devices via the charging ports. The data sync ports support charging with a supply of 5V/0.9A which will charge quite slowly.

FCC Compliance

This device complies with Part 15 of the FCC Rules. Operation is subject to the following two conditions: (1) this device may not cause harmful interference, and (2) this device must withstand any interference received, including interference that may cause undesired operation.

WEEE Compliance

Correct Disposal of This Product (Waste Electrical & Electronic Equipment)
(Applicable in countries with separate collection systems)
This marking on the product, accessories or literature indicates that the product and its electronic accessories should not be disposed of with other household waste at the end of their working life. To prevent possible harm to the environment or human health from uncontrolled waste disposal, please separate these items from other types of waste and recycle them responsibly to promote the sustainable reuse of material resources. Household users should contact either the retailer where they purchased this product, or their local government office, for details of where and how they can take these items for environmentally safe recycling. Business users should contact their supplier and check the terms and conditions of the purchase contract. This product and its electronic accessories should not be mixed with other commercial wastes for disposal.

尺寸：70*120mm

装订成册

材质：封面128克铜版纸 内页80克书纸