

尺寸：48mm*48mm

折页

128g铜版纸

RAVPOWER

MODEL:RP-SHO28
MAGNETIC CAR PHONE MOUNT
User Guide



Car Phone Mount*1



Alcohol Prep Pad*2



Spare Base Adhesive*2

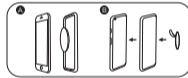


Metal Sheet *2

Install the Metal Sheet



1. Wipe the back of your phone case with the included alcohol prep pad. Let dry.



2. Place the metal sheet between the phone and the case, or remove its protective paper and stick it onto phone case.

RAVPOWER
www.ravpower.com

NORTH AMERICA

E-mail: support@ravpower.com(US)
support.ca@ravpower.com(CA)
Tel: 1-888-456-8468 (Monday-Friday: 9:00 - 17:00 PST)
US Distributor: SUNVALLEYTEK INTERNATIONAL INC.
Address: 46724 Lakeview Blvd, Fremont, CA 94538

MANUFACTURER

Manufacturer: Shenzhen NearbyExpress Technology Development Co.,Ltd.
Address: 333 Bulong Road, Shenzhen, China, 518129

Learn more about the EU Declaration of Conformity:
<https://www.ravpower.com/downloads-RP-SHO28-CE-Cert.html>



MADE IN CHINA

20191009
RP-SHO28_V1.1 EN

Caution

1. Don't stick the metal sheet on the back of phone with wireless charging functionality.
2. It is recommended to stick the metal sheet on your phone case. Remove the phone case before wireless charging.
3. To remove the metal plate, please warm it with a hair dryer, then use some dental floss to lift and detach it.

Install the Mount onto Your Car



1. Wipe the target spot with the included alcohol prep pad and wait until it is fully dry.



2. Remove the protective paper from the base adhesive or replace it with the spare one when needed.



3. Press the base with 3kg force onto the car dashboard and hold still for 30 seconds.



4. Place your phone on the mount adjust it for the best angle.

Caution

1. In cold weather, install the mount in a well-warmed car only.
2. Do not mount the product on the airbag.

Magnet Warning

This product contains strong magnet, which will not damage phones or tablets with solid state hard drives. But we strongly recommend you to keep it away from credit cards, pacemakers, or hard drives.

Disclaimer

We do not recommend to use this phone mount with older vehicles. The dashboard of older vehicles may have become more brittle due to sun damage. We are not responsible for the dashboard repair if any damage occurs.

www.ravpower.com