

### ★ Storage

Store at 2-8°C for up to 3 months.

-20°C for long term storage

### ★ Contents

- Product Manual
- Prosi Prestained Protein Marker, composed of 0.1-0.2 mg/ml of each protein in 62.5mM Tris-H3PO4 (pH 7.5 at 25°C) 1mM EDTA, 2% SDS, 10mM DTT, 1mM NaN3 and 33% glycerol.

ALL PRODUCTS SOLD BY GenDEPOT ARE INTENDED FOR RESEARCH USE ONLY UNLESS OTHERWISE INDICATED. THIS PRODUCT IS NOT INTENDED FOR DIAGNOSTIC OR DRUG PURPOSE

### ★ Shipping Condition

Ship with ice pack.

### ★ Introduction

The Prosi Prestained Protein Marker consists of a marker with ten clearly identifiable bands at convenient molecular weights. The protein sizes are approximately 10, 17, 28, 35, 43, 56, 70, 95, 130 and 175 kDa, and this product has three reference bands. The 70kDa, and 28 kDa which is recently improved reference bands are red and 6 kDa reference band is green. This marker is designed for monitoring protein separation during SDS-PAGE (sodium dodecyl sulfate-polyacrylamide gel electrophoresis), verification of western transfer efficiency and approximate sizing of proteins.

### ★ Recommendations

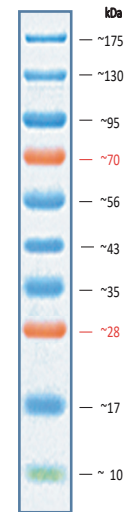
- **Do not boil before you load.**
- Load the following volumes of the ladder on SDS-PAGE gel :  
Note: 5ul per well for mini-gels, 3ul per well for blots.  
Note: 10ul per well for large gels, 6ul per well for blots.
- The indicated loading volume is recommended for gels with a thickness of 0.75mm. For thicker gels, the loading volume should be increased.

### ★ Quality Control

- Tested in SDS-PAGE and Western blotting.
- Please see certificate of analysis for actual apparent molecular weights. It is based on lot specific results.

### ★ Note

- Each lot of the Prosi Prestained Protein Marker is calibrated against a precisely sized, unstained Protein Marker and calculated apparent molecular weights are reported in the picture. Please see COA for actual apparent molecular weight.
- For precise molecular weight determinations use Protein Marker, unstained, Broad Range (Cat No.#P8501-020).



5ul/well  
4-20% Tris-Glycine SDS-PAGE

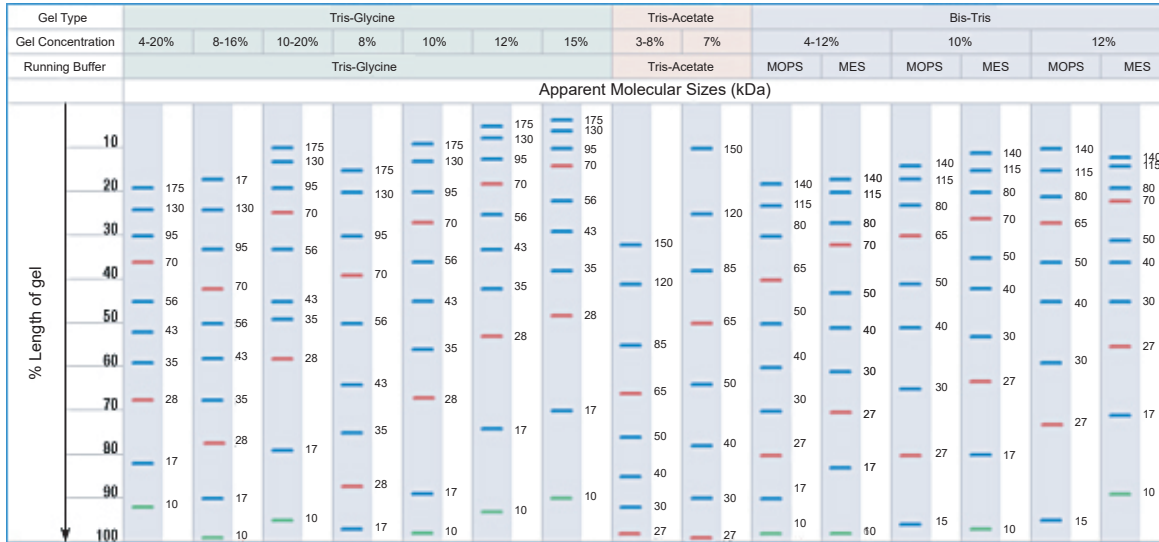
The Prosi Prestained Protein Marker should only be used to determine an **approximate size molecular weight** and the **size is lot specific**.

\* When a protein marker is covalently bound to a charge-carrying dye molecule, this can affect the protein's overall charge. Altering the protein's charge will most likely change its mobility within the gel. This explains why the prestained protein markers are given "apparent" molecular weight values, while regular unstained protein markers are given their true molecular weight. The apparent molecular weights state on the insert sheet and other references of our prestained protein markers were determined using 4-20% Tris-Glycine gels. It has been observed that when run on different gel types (Tris-tricine, Bis-Tris, etc), the apparent molecular weight seems "incorrect". The reason for this disparity is the different formulations of the gel types (buffering agents, ionic strength and pH).

### ★ Related Product

Product Name	Cat No
Albumin	A0100
Xpert Protease Inhibitor Cocktail Solution (100X)	P3100
Xpert Phosphatase Inhibitor Cocktail Solution (100X)	P3200
West-Q Pico Dura ECL Solution	W3653
West-Q Femto ECL Solution	W3700

★ Migration pattern of Prosi Prestained Protein Marker in different electrophoretic conditions



The apparent molecular weight of each protein(kDa) has been determined by calibration of each protein against an unstained protein ladder in specific electrophoresis condition.