

★ Storage

Store at -20°C.

Stable for at least 3 months at 4°C.

✈ Contents

- Product Manual
- 1Kb DNA Marker(0.5ug/ul), composed of proprietary plasmids are digested to completion with appropriate restriction enzymes in 10mM Tris-HCl (pH8.0 at 25 °C), 1mM EDTA

ALL PRODUCTS SOLD BY GenDEPOT ARE INTENDED FOR RESEARCH USE ONLY UNLESS OTHERWISE INDICATED. THIS PRODUCT IS NOT INTENDED FOR DIAGNOSTIC OR DRUG PURPOSE

★ Shipping Condition

Ship with ice pack.

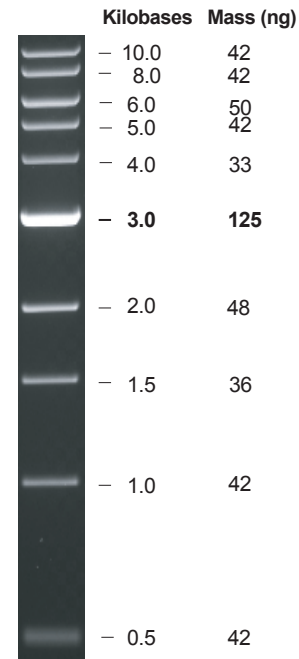
★ Introduction

The 1Kb DNA Marker consists of proprietary plasmids are digested to completion with appropriate restriction enzymes to yield 10 bands suitable for use as molecular weight standards for agrose gel electrophoresis. The digested DNA includes fragments ranging from 0.5 - 10.0 Kilobases(Kb). The 3.0Kb fragment has increased intensity to serve as reference band. The approximate mass of DNA in each of the bands is provided (assuming a 0.5 ug load) for approximating the mass of DNA in comparably intense samples of similar size.

★ Recommendations

- Recommended load : 0.5ug
- 1Kb DNA Marker was not designed for precise quantification of DNA mass, but can be used for approximating the mass of DNA in comparably intense samples of similar size. The approximate mass of DNA in each of the bands in 1Kb DNA marker is as following picture (assuming a 0.5ug loading).
- Dilute in TE or other buffer of minimal ionic strength. DNA may denature if diluted in dH₂O.

★ Note



0.5ug of 1Kb DNA Marker stained with ethidium bromide on a 0.8% agarose gel in 1X TAE.

★ Related Product

Product Name	Cat No
amfiSure PCR Master Mix(2x)	P0311
EtBr Stock Solution, 10mg/ml	E0205
SafePinky DNA Gel Staining Solution(10,000X)	S1001
iVDye 100bp DNA Ladder	V1002
iVDye 1Kb DNA Ladder	V1004
100bp PCR Ranger DNA Marker, 100bp-To-3Kb	D1108
1Kb PCR Ranger DNA Marker, 75bp-To-20Kb	D1109