

★ Storage

Store at -20°C for long term.

Store aliquote at 4°C for short term use (2-3 weeks).

Contents

- Product Manual
- Myc-Tag Mouse Monoclonal Antibody

ALL PRODUCTS SOLD BY GenDEPOT ARE INTENDED FOR RESEARCH USE ONLY UNLESS OTHERWISE INDICATED. THIS PRODUCT IS NOT INTENDED FOR DIAGNOSTIC OR DRUG PURPOSE

★ Shipping Condition

Ship with ice pack.

★ Introduction

Epitope tags provide a method to localize gene products in a variety of cell types, study the topology of proteins and protein complexes, identify associated proteins, and characterize newly identified, low abundance or poorly immunogenic proteins when protein specific antibodies are not available. Antibodies against c-myc epitopes recognize overexpressed proteins containing Myc epitope tag fused to either amino- or carboxy-terminal of targeted proteins.

★ Antibody Information

Description: Anti-Myc Tag (MYC.A7) Monoclonal Antibody

Immunogen: EQKLISEEDL (Myc) synthetic peptide conjugated to KLH.

Specificity: Recognizes the N-terminal, C-terminal Myc-tagged fusion proteins.

Application: Dot, ELLSA, IP, IS, WB.

Reactivity: Human

Clonality: MYC.A7

Host: Mouse

Isotype: IgG1

Purification: Protein A affinity chromatography from mouse ascites fluid.

Conjugated: Unconjugated

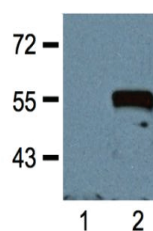
Form: Liquid: 1mg/ml in 10mM PBS, pH 7.2 with 0.05% NaN₃.

Lyophilized: 1mg/mL Lyophilized in 10mM PBS, pH 7.2,
with 1% BSA and 0.05% NaN₃.

★ Tested Application and Dilution

Application	Dilution Range
Western Blot (WB)	1:1,000 - 1:3,000
Immunoprecipitation (IP)	1:50 - 1: 200
IS	1:500 - 1:2,000
DOT	Determined by end users
ELISA	Determined by end users

★ Typical Data Obtained



1:1,000 (1ug/mL) Ab dilution probed against HEK293 cells transfected with Myc-tagged protein vector;
Lane 1: untransfected
Lane 2: transfected

★ Related Products

Product Name	Cat No
Albumin, (IgG, Fatty Acid and Protease Free)	A0100
AffiSelect Cox IV Loading Control Antibody	A0017
AffiSelect GAPDH Loading Control Antibody, 100ug	A0039
AffiSelect Beta-Actin Loading Control Antibody, 100ug	A0042
AffiSelect a-Tubulin Loading Control Antibody, 100ug	A0050
Affiselect Total Protein Extraction Solution	A0710
NP-40 Lysis Buffer (2X)	N1200
Puredown Protein A-Agarose, BSA Blocked	P9201
Puredown Protein G-Agarose, BSA Blocked	P9202
Puredown Protein A/G-Agarose, BSA Blocked	P9203
RIPA Cell Lysis Buffer (1X) with EDTA	R4100