

★ Storage

Store at -20°C for long term.

Store aliquote at 4 °C for short term use (2-3 weeks).

✦ Contents

- Product Manual
- HIS-Tag Mouse Monoclonal Antibody, Clone HIS.H8

ALL PRODUCTS SOLD BY GenDEPOT ARE INTENDED FOR RESEARCH USE ONLY UNLESS OTHERWISE INDICATED. THIS PRODUCT IS NOT INTENDED FOR DIAGNOSTIC OR DRUG PURPOSE

★ Shipping Condition

Ship with ice pack.

★ Introduction

Epitope tags provide a method to localize gene products in a variety of cell types, study the topology of proteins and protein complexes, identify associated proteins, and characterize newly identified, low abundance or poorly immunogenic proteins when protein specific antibodies are not available. Expression of recombinant proteins in E-coli as a fusion protein with neighboring histidine residues is one of the most popular methods of epitope tags. The affinity of the histidine-tag motif to Ni²⁺ by chelation is strong and selective enough to enable purification of the protein to homogeneity by affinity chromatography on a Ni²⁺-NTA adsorbent.

★ Antibody Information

Description: Mouse anti-HIS Monoclonal Antibody

Immunogen: HHHHHH (6x His) synthetic peptide conjugated to KLH

Specificity: Recognizes the epitope of 6x His-tags encoded by many commercially available vectors, regardless of the tag's location in the fusion protein sequences (i.e.: reacts with N-terminal, C-terminal or internal 6x His-tags).

Application: Dot, ELLSA, IP, WB

Reactivity: Human

Clonality: Monoclonal, HIS.H8

Host: Mouse

Isotype: IgG2b

Purification: Affinity purified

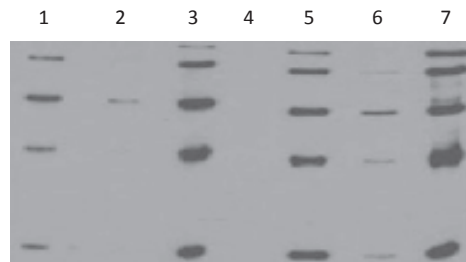
Conjugated: Unconjugated

Form: Liquid, 1mg/ml in 10mM PBS, pH 7.2 with 0.1% Kathon

★ Tested Application and Dilution

Application	Dilution Range
Western Blot (WB)	1:1,000 - 1:3,000
Immunoprecipitation (IP)	1:50 - 1: 200
IF/ICC	1:200 - 1:500
DOT	Determined by end users
ELISA	Determined by end users

★ Typical Data Obtained



Comparison between anti-Hig Tag (H8) mAb with 2 different vender Abs, probed against a standard ladder (Qiagen Cat.No. 34705) containing five different His-tagged proteins.

All Ab dilutions are 1:2,000 (0.5ug/ml)

Lane 1,2,4,and 5 - competitors

Lane 3 and 6 - Ab1005 GenDEPOT HIS-Tag

★ Related Products

Product Name	Cat No
Albumin, (IgG, Fatty Acid and Protease Free)	A0100
AffiSelect Cox IV Loading Control Antibody	A0017
AffiSelect GAPDH Loading Control Antibody, 100ug	A0039
AffiSelect Beta-Actin Loading Control Antibody, 100ug	A0042
AffiSelect a-Tubulin Loading Control Antibody, 100ug	A0050
Affiselect Total Protein Extraction Solution	A0710
NP-40 Lysis Buffer (2X)	N1200
Puredown Protein A-Agarose, BSA Blocked	P9201
Puredown Protein G-Agarose, BSA Blocked	P9202
Puredown Protein A/G-Agarose, BSA Blocked	P9203
RIPA Cell Lysis Buffer (1X) with EDTA	R4100