

★ Storage

Store at -20°C for long term.

Store aliquote at 4 °C for short term use (2-3 weeks).

Contents

- Product Manual
- HA-Tag Mouse Monoclonal Antibody, Clone HA.C5

ALL PRODUCTS SOLD BY GenDEPOT ARE INTENDED FOR RESEARCH USE ONLY UNLESS OTHERWISE INDICATED. THIS PRODUCT IS NOT INTENDED FOR DIAGNOSTIC OR DRUG PURPOSE

★ Shipping Condition

Ship with ice pack.

★ Introduction

Epitope tags provide a method to localize gene products in a variety of cell types, study the topology of proteins and protein complexes, identify associated proteins, and characterize newly identified, low abundance or poorly immunogenic proteins when protein specific antibodies are not available. An HA Tag is frequently incorporated into recombinant proteins for a variety of purposes. An anti-HA antibody can then be used to detect the protein doing studies with transfected cells.

★ Antibody Information

Description: Mouse anti-HA Monoclonal Antibody

Immunogen: YPYDVPDYA (HA) synthetic peptide conjugated to KLH

Specificity: Recognizes the N-terminal, C-terminal or internal HA-tagged fusion proteins

Application: Dot, ELLSA, IP, WB

Reactivity: Human

Clonality: Monoclonal, HA.C5

Host: Mouse

Isotype: IgG3

Purification: Affinity purified

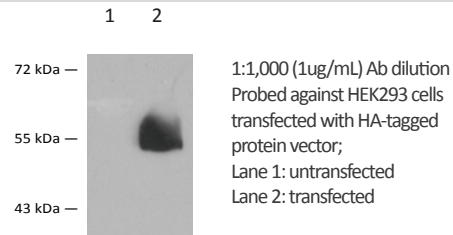
Conjugated: Unconjugated

Form: Liquid, 1mg/ml in 10mM PBS, pH 7.2 with 0.1% Kathon

★ Tested Application and Dilution

Application	Dilution Range
Western Blot (WB)	1:1,000 - 1:3,000
Immunoprecipitation (IP)	1:50 - 1: 200
IF/ICC	1:200 - 1:500
DOT	Determined by end users
ELISA	Determined by end users

★ Typical Data Obtained



★ Related Products

Product Name	Cat No
Albumin, (IgG, Fatty Acid and Protease Free)	A0100
AffiSelect Cox IV Loading Control Antibody	A0017
AffiSelect GAPDH Loading Control Antibody, 100ug	A0039
AffiSelect Beta-Actin Loading Control Antibody, 100ug	A0042
AffiSelect a-Tubulin Loading Control Antibody, 100ug	A0050
Affiselect Total Protein Extraction Solution	A0710
NP-40 Lysis Buffer (2X)	N1200
Puredown Protein A-Agarose, BSA Blocked	P9201
Puredown Protein G-Agarose, BSA Blocked	P9202
Puredown Protein A/G-Agarose, BSA Blocked	P9203
RIPA Cell Lysis Buffer (1X) with EDTA	R4100