

★ Storage

Store at -20°C for long term.

Store aliquote at 4 °C for short term use (2-3 weeks).

✦ Contents

- Product Manual
- GFP-Tag Mouse Monoclonal Antibody, Clone FG28R

ALL PRODUCTS SOLD BY GenDEPOT ARE INTENDED FOR RESEARCH USE ONLY UNLESS OTHERWISE INDICATED. THIS PRODUCT IS NOT INTENDED FOR DIAGNOSTIC OR DRUG PURPOSE

★ Shipping Condition

Ship with ice pack.

★ Introduction

Epitope tags provide a method to localize gene products in a variety of cell types, study the topology of proteins and protein complexes, identify associated proteins, and characterize newly identified, low abundance or poorly immunogenic proteins when protein specific antibodies are not available. Green Fluorescent Protein (GFP) has quickly become a powerful research tool for assessing gene expression and subcellular protein distribution in fixed or living cells. GFP is excited by and brightly fluoresces when exposed to UV or blue light. This feature makes it ideal as a marker for use in fluorescence microscopy, cytometry, tagging fusion proteins, and assaying transcriptional regulation from gene promoters in vivo. Numerous GFP variants with enhanced and shifted emission spectra (blue, green, and yellow) have been developed through amino acid substitutions at specific residues.

GenDEPOT's GFP-Tag Mouse Monoclonal Antibody recognizes both the native and denatured forms of GFP (Green Fluorescent Protein) and its many popular variants: EGFP, YFP, EYFP, and CFP.

★ Antibody Information

Description: Mouse anti-GFP Monoclonal Antibody

Immunogen: GFP from the jellyfish *Aequorea victoria* N-Terminal peptide-KLH conjugates

Specificity: Recognizes native and denatured forms of GFP and its variants such as: EGFP, YFP, EYFP and CFP.

Application: Dot, ELLSA, IP, WB

Reactivity: Human

Clonality: Monoclonal, GF28R

Host: Mouse

Isotype: IgG2b

Purification: Affinity purified

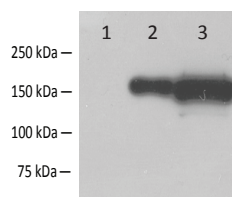
Conjugated: Unconjugated

Form: Liquid, 1mg/ml in 10mM PBS, pH 7.2 with 0.1% Kathon

★ Tested Application and Dilution

Application	Dilution Range
Western Blot (WB)	1:1,000 - 1:3,000
Immunoprecipitation (IP)	1:50 - 1: 200
IF/ICC	1:200 - 1:500
DOT	Determined by end users
ELISA	Determined by end users

★ Typical Data Obtained



1:1,000 (1ug/mL) Ab dilution probed against HEK293 cells transfected with GFP-tagged protein vector:
 Lane 1: Untransfected control
 Lane 2: 1ug of transfected cell lysates
 Lane 3: 10ug of transfected cell lysates

★ Related Products

Product Name	Cat No
Albumin, (IgG, Fatty Acid and Protease Free)	A0100
AffiSelect Cox IV Loading Control Antibody	A0017
AffiSelect GAPDH Loading Control Antibody, 100ug	A0039
AffiSelect Beta-Actin Loading Control Antibody, 100ug	A0042
AffiSelect a-Tubulin Loading Control Antibody, 100ug	A0050
Affiselect Total Protein Extraction Solution	A0710
NP-40 Lysis Buffer (2X)	N1200
Puredown Protein A-Agarose, BSA Blocked	P9201
Puredown Protein G-Agarose, BSA Blocked	P9202
Puredown Protein A/G-Agarose, BSA Blocked	P9203
RIPA Cell Lysis Buffer (1X) with EDTA	R4100