

★ Storage

Store at -20°C for long term.

Store aliquote at 4 °C for short term use (2-3 weeks).

★ Contents

- Product Manual
- FLAG-Tag Mouse Monoclonal Antibody, Clone FG4R

ALL PRODUCTS SOLD BY GenDEPOT ARE INTENDED FOR RESEARCH USE ONLY UNLESS OTHERWISE INDICATED. THIS PRODUCT IS NOT INTENDED FOR DIAGNOSTIC OR DRUG PURPOSE

★ Shipping Condition

Ship with ice pack.

★ Introduction

Epitope tags provide a method to localize gene products in a variety of cell types, study the topology of proteins and protein complexes, identify associated proteins, and characterize newly identified, low abundance or poorly immunogenic proteins when protein specific antibodies are not available. Tagging with DYKDDDDK may be done at the N-terminus, and N-terminus preceded by a methionine residue, C-terminus, and an internal positions of the target protein. The small size of the epitope tag and its high hydrophilicity tend to decrease the possibility of interference with protein expression proteolytic maturation, antigenicity and function.

GenDEPOT's FLAG-Tag Mouse Monoclonal Antibody recognizes N-terminal, C-terminal or internal DYKDDDDK-tagging fusion proteins.

★ Antibody Information

Description: Mouse anti-FLAG Monoclonal Antibody

Immunogen: DYKDDDDK synthetic peptide conjugated to KLH

Specificity: Recognizes the N-terminal, C-terminal or internal DYKDDDDK-tagged fusion proteins.

Application: Dot, ELLSA, IP, WB

Reactivity: Human

Clonality: Monoclonal, FG4R

Host: Mouse

Isotype: IgG1

Purification: Affinity purified

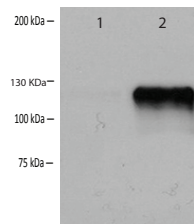
Conjugated: Unconjugated

Form: Liquid, 1mg/ml in 10mM PBS, pH 7.2 with 0.1% Kathon

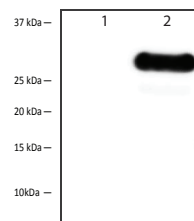
★ Tested Application and Dilution

Application	Dilution Range
Western Blot (WB)	1:1,000 - 1:3,000
Immunoprecipitation (IP)	1:50 - 1: 200
IF/ICC	1:200 - 1:500
DOT	Determined by end users
ELISA	Determined by end users

★ Typical Data Obtained



1:1,000 (1ug/mL) Ab dilution probed against HEK293 cells transfected with DYKDDDDK-tagged protein vector; Lane 1: untransfected Lane 2: transfected



Immunoprecipitation of Chlamydia trachomatis FLAG-tagged IncA was performed on HeLa cells infected with a strain of Chlamydia trachomatis expressing FLAG-IncA under the control of a Tetracycline (Tet) promoter Lane 1: untreated (-) Lane 2: treated with Tet (+)

★ Related Products

Product Name	Cat No
Albumin, (IgG, Fatty Acid and Protease Free)	A0100
AffiSelect Cox IV Loading Control Antibody	A0017
AffiSelect GAPDH Loading Control Antibody, 100ug	A0039
AffiSelect Beta-Actin Loading Control Antibody, 100ug	A0042
AffiSelect a-Tubulin Loading Control Antibody, 100ug	A0050
Affiselect Total Protein Extraction Solution	A0710
NP-40 Lysis Buffer (2X)	N1200
Puredown Protein A-Agarose, BSA Blocked	P9201
Puredown Protein G-Agarose, BSA Blocked	P9202
Puredown Protein A/G-Agarose, BSA Blocked	P9203
RIPA Cell Lysis Buffer (1X) with EDTA	R4100