

### ★ Storage

Store at -20°C.  
For extended storage, aliquot contents and freeze at -20°C  
Dilute only prior to immediate use  
Avoid cycles of freezing and thawing  
Expiration date is one year from date of opening.

### ★ Description

Rabbit Polyclonal to beta-actin

### ★ Background

In vertebrates 3 main groups of actin isoforms, alpha, beta, and gamma have been identified. The alpha actins are found in muscle tissues and are a major constituent of the contractile apparatus. The beta and gamma actins coexist in most cell types as components of the cyto-skeleton and as mediators of internal cell motility. Beta actins are highly conserved proteins that are involved in cell motility, structure, and integrity. Beta actins are cytoplasmic proteins ubiquitously expressed in all eukaryotic cells. Polymerization of globular actin (G-actin) leads to a structural filament (F-actin) in the form of a two-stranded helix. Each actin can bind to 4 others. This antibody serves as an excellent loading control.

### ★ Form / Concentration

Liquid / 1.3mg/ml (by UV absorbance at 280nm)

### ★ Size

100ug

### ★ Host / Clonality

Rabbit / polyclonal

### ★ Storage buffer

0.02M Potassium Phosphate, 0.15M Sodium Chloride, pH 7.2 with 0.01% (w/v) Sodium Azide

### ★ Purity

This product was affinity purified from monospecific antiserum by immunoaffinity purification.

### ★ Specificity

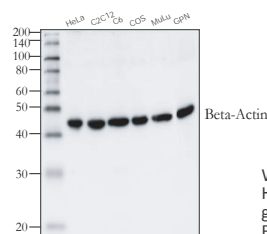
This affinity purified antibody is directed against human beta Actin protein. A BLAST analysis was used to suggest that this antibody would react with beta Actin from a wide range of organisms, including most vertebrates and some yeast. Broad reactivity makes this antibody an excellent loading control.

### ★ Applications

This affinity purified antibody has been tested for use in ELISA, Immunohistochemistry and western blot. Specific conditions for reactivity should be optimized by the end user. Beta actin present in neuromuscular junctions also stains. Paraformaldehyde fixation. Expect a band at ~42kDa in size corresponding to beta actin by western blotting in the appropriate cell lysate or extract.

#### Recommended Dilutions:

Application	Starting Dilution
ELISA	1:10,000 - 1:40,000
Western Blot	1:1,000 - 1: 4,000
If microscopy	1:500 - 1:2,000
Other applications	User optimized



Western blot analysis of extracts from HeLa, C2C12, C6, COS, MvLu cells and guinea pig neutrophils (GPN), using Beta-Actin Antibody.

### ★ Immunogen

This affinity purified antibody was prepared from whole rabbit serum produced by repeated immunizations with a synthetic peptide corresponding to amino acids 359 - 368 of Human beta Actin.

### ★ Related Products

Product Name	Cat No
AffiSelect Alpha-Tubulin Loading Control Antibody	A0050
AffiSelect GAPDH Loading Control Antibody	A0039
AffiSelect VDAC/Porin Loading Control Antibody	A0033
AffiSelect Cox IV Loading Control Antibody	A0017
West-Ez Blotting Buffer, 3% BSA	W3710
West-Q Chemiluminescent Substrate Kit, Plus	W3650
West-Ez Stripping buffer	S2100