

Smart Indoor LED Hydroponic System

Model: ID-IG301S



Important Safety Instructions

1. Do not use this product outdoors. It is intended for indoor household use only.
2. Please use the power adapter with a 12V output voltage and a 3A current. To reduce the risk of electric shock, do not alter or replace the power adapter in any way.
3. Always unplug the Gardening Kit from the outlet before doing any routine maintenance.
4. Do not use the Gardening Kit if it has a damaged cord or power adapter. Do not use if it is malfunctioning or has dropped into the water. If the product is damaged, contact customer service via email: support@idooworld.com.
5. Do not set up the machine when it is plugged in or turned on. Never dismantle or attempt to repair the machine on your own.
6. Do not allow water to touch the LED light panel. Keep the cord away from heated surfaces to prevent damage.
7. Always keep any electrical components of the machine away from water to prevent water damage to the machine. If water is spilled onto any electronic component, dry all electronic cables and components immediately and thoroughly.
8. This machine is not intended to be used by children or persons with impaired physical, sensory or cognitive abilities, and persons lacking experience and knowledge unless they have been given supervision or instructions regarding the machine's usage. Children should always be supervised when operating the machine. It is not a toy.
9. The maximum height of the light panel is 28 cm/11 inch. Please ensure that all seeds grow within the height of the light panel.
10. The water level must be in contact with the seedling sponge in the early stages.
11. The heat dissipation temperature of the aluminum shell of the light panel is less than 122°F/50°C, touch carefully to avoid burns or accidental injury.
12. Keep the water tank clean to avoid bacterial reproduction.
13. In case of withered and unhealthy plants, remove them immediately to avoid root erosion and/or bacterial reproduction. If you notice any rotten roots, it is advised to clean the water tank to prevent them from affecting other plants.

Advice for Water Pump

1. The machine needs water in the tank to operate, otherwise, it would shorten the lifespan of the water pump.
2. Pay attention to plant roots getting tangled up in the water pump. Roots that are too long can interfere with the water pump, trim roots before cleaning, and ensure that there is enough water in the tank before turning the power on.

About the Product

1. Overview



2. Specification

Model: ID-IG301S
 Power Adapter: 100V-240V~ 50/60Hz
 Input: 12V $\overline{\text{---}}$ 3A
 Operating Voltage: 12V
 Fan Speed: 2500r/m
 Fan Noise: \leq 40dB
 Standby Current: \leq 30uA
 Pump Input: DC 5V 300mA
 Pump Flow: 170L/h
 Material: ABS

Water Tank Capacity: 4L
 Light Panel: NOT Waterproof
 Working Temperature: 15°C - 30°C/59°F - 86°F
 Product Weight: 2.7kg/5.95lb
 Product Size: 35*26*24.5cm/13.8*10.23*9.64inch

Symbol	Definition
$\overline{\text{---}}$	Direct Current
\sim	Alternating Current

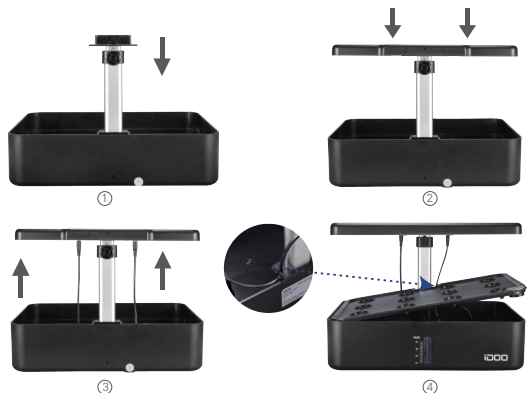
3. Package Contents



Using the Product

1. Installation

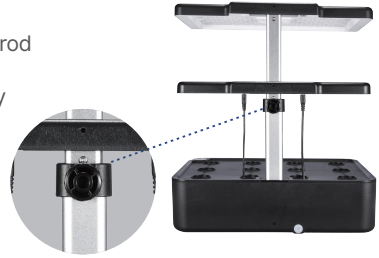
1. Attach the Extendable Rod to the water tank.
2. Attach the Light Panel to the extendable rod.
3. Insert the power cord and water pump cord into the corresponding ports on the light panel.
4. Lay the water tank top cover on the machine. Ensure the pump cord is fixed within the notch while placing the water tank top cover on.



2. Adjust the Height of the LED Light Panel

Rotate the knob on the back of the rod and pull the upper rod section to adjust the height.
Do not pull the lower rod section. It is designed to be firmly attached to the water tank.

Tip: When planting a new seed pod, set the light panel to the lowest possible position.



3. Add Water & Nutrients

Water

Rotate to open the lid of the water inlet and pour **tap water** or **distilled water**.

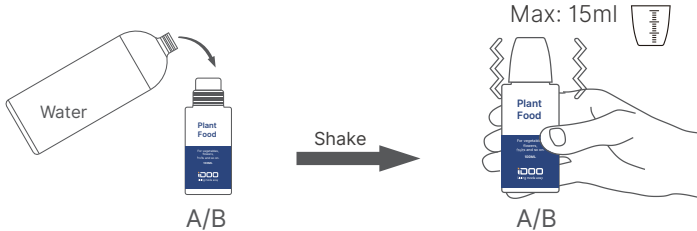
For better results, keep the water level above 4L. Keep in mind to add water while adding a proportionate amount of nutrients.

Notice: Do not use well water as it may interfere with the nutrients, or softened water as it may contain sodium contents that are harmful to plants.



Nutrients

1. Add room-temperature tap water or bottled distilled water to nutrient A and shake until well mixed.
2. Add room-temperature tap water or bottled distilled water to nutrient B and shake until well mixed.
3. Add 5ml solution A and 5ml solution B while adding 1L water into the tank.



Water	Nutrient
1L	5ml A + 5ml B
4L	20ml A + 20ml B

Note:

1. Adding too much nutrient solution can be harmful to your plants.
2. Do not use well water or softened water. Most well water contains a large number of dissolved solids that may disrupt the balance of nutrients, and softened water adds sodium. This can cause abrupt browning of plants or simply poor growth.

Shelf Life:

- Plant food nutrients can be stored unopened for 2 years at room temperature without exposure to sunlight.
- Plant food nutrients that have been dissolved in water can be stored for 5 months if not exposed to sunlight.

4. Plant Seedlings

The Gardening Kit does not include seeds. It is recommended to purchase seeds from a known local brand.

Step 1

- Put 3-4 seeds into the wet sponge. (Some seeds germinate in less than 24 hours, some may take 1-4 weeks.)
- Place the sponge into the planting basket.
- Place the basket label and seedling cover in sequence on the planting basket.



Tips:

1. Use the soaking method to remove the bad seeds. It is recommended that the seeds be soaked in water for 2 hours and then selected from the bottom. These seeds will have a higher germination rate.
2. The basket label helps to prevent the sponge from developing mold/algae and the seedling cover helps the seeds germinate.

Step 2

- Place the planting basket into the basket container.
- Pour water through the inlet till the water level reaches the bottom of the planting basket.



Step 3

After the seed germination, it is recommended to keep only one seedling. (Growing two or more seedlings in the same sponge may result in poor growth due to insufficient nutrients.)



Tips:

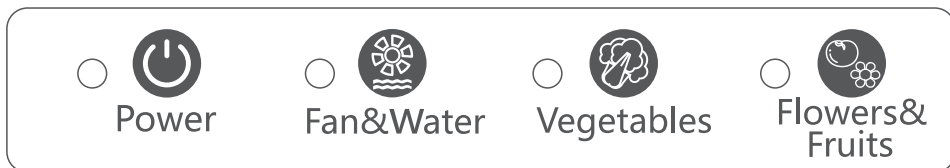
1. Observe the water level and keep it at 4L.
2. 4L water requires 20ml solution A and 20ml solution B.
3. For larger plants, it is recommended to plant them at a separated distance to allow for better overall growth. Cover the empty holes to prevent the Water Tank from being exposed to light, which could potentially allow for mold and bacteria growth and affect plant roots.



5. Plug-In

Do not plug the power adapter if there is no water in the tank.

6. Control Panel Settings



Power: After plugging in, the power indicator will turn solid red and blinking green, indicating that the machine is on standby mode. Then, short press the button to turn it on. The power indicator will flash green (It will turn solid green if the device is connected to the App). Press again to turn it off.

Fan & Water Mode: Fan and pump will turn on by default once the Power button is pressed (the indicator light will turn solid blue) and automatically run in a cycle (30mins-on-and-30mins-off).

1. *Short press:* turn on/off the fan and pump (the indicator light will turn on and off). They will automatically turn on with the LED light, running in another cycle (30mins-on-and-30mins-off).

2. *Press and hold:* turn on/off the fan only (the indicator light will flash once). If you turn off the fan manually, it will not automatically turn on with the LED light.

3. *Water Shortage Reminder:* When the water level is below 1 L, the Fan & Water Mode indicator light will flash and the pump will stop working. Please add water while adding a proportionate amount of nutrients.

Vegetables Mode / Flowers & Fruits Mode: Press this button to turn it on (the indicator light will turn solid blue and the light panel will turn on). It will run in the cycle of 16h-on-and-8h-off. Press again to turn off (the light panel and indicator light will turn off).

Mode	LED Light Color
Vegetables Mode	Red/White/Blue
Flowers & Fruits Mode	Red/White

Note:

1. Vegetables and Flowers & Fruits Modes work independently. The cycle will reset each time you switch between modes.

2. **10-hour intervals for sleep:** To avoid the LED light affecting your sleep during nighttime, you can disable the current planting mode to turn off the light. The light will turn on automatically after 10 hours. This design is to prevent the user from forgetting to turn the light on after a few hours.

Note: DO NOT turn off the power, otherwise the LED light will not turn on automatically.

3. **Memory function:** The machine has a memory function, whether it is powered off or on standby mode. This means that the next time it is switched on, it will automatically return to the previously selected mode.

4. Once you choose a planting mode, the LED light will automatically turn on and off in a cycle to provide your plants with the "sunlight" needed.

Note: No need to turn on/off the light manually.

APP Instructions

Note: Due to continuous updates and improvements, the app may appear slightly different. Please follow the in-app instructions in case of any differences.

1. Search

Search for "Gennecc" on App Store/Google Play or scan the QR code below to download the app.

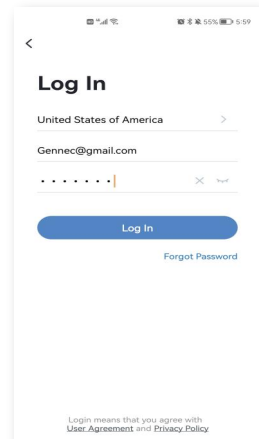
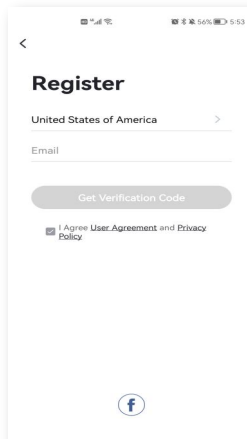
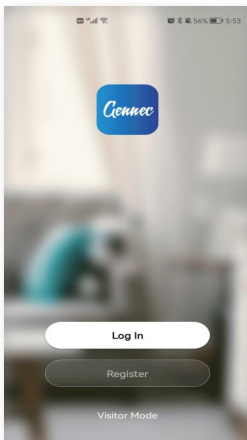


Gennecc



2. Register

Tap Register to create a new account and then log in.



3. Add Device

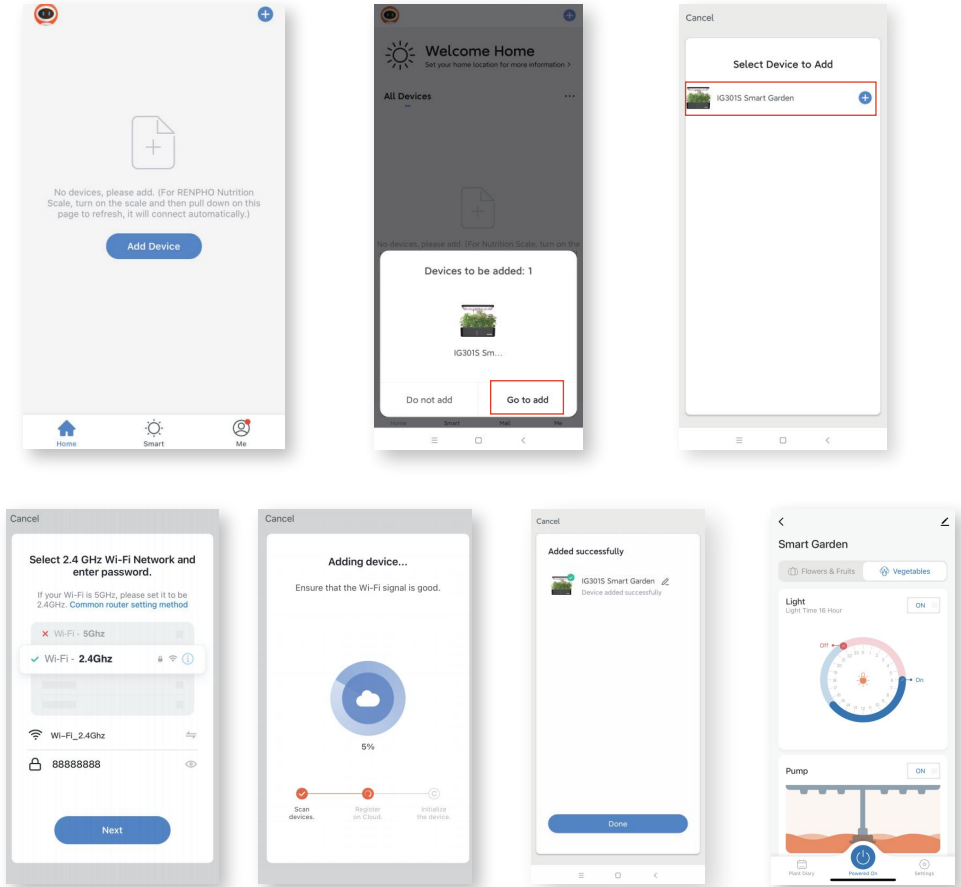
Note: Please make sure your phone is connected to a secure 2.4 GHZ Wi-Fi network. The device can only be connected on a secure 2.4 GHZ network.

Plug in the device and enable your Bluetooth, the power indicator will flash green to wait for connecting.

When you open the app, a pop-up window will appear to lead you to pair your phone with the device following the in-app instructions.

Once connection is successful, the power indicator will be solid **Green**.

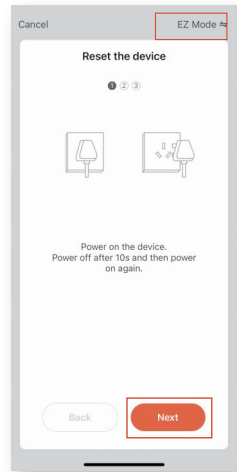
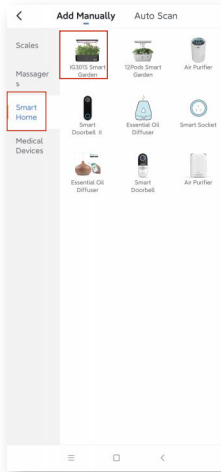
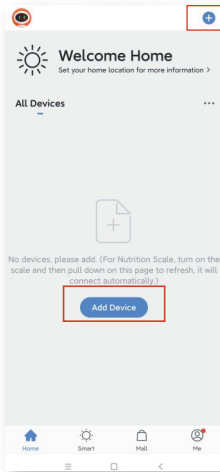
Tip: if no window pops up, you can slide down to refresh the page.



Alternatively, there are other 3 methods to connect manually.

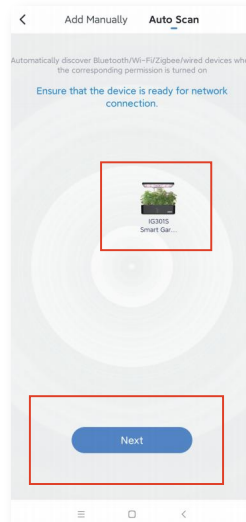
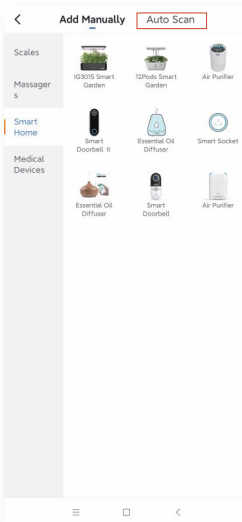
Method 1

Click "Add Device" or "+" on the upper right corner, then click "IG301S Smart Garden" in the Smart Home category. Input the Wi-Fi password and click "Next" to add the device through Default Configuration Mode (EZ Mode) following the in-app instructions.



Method 2

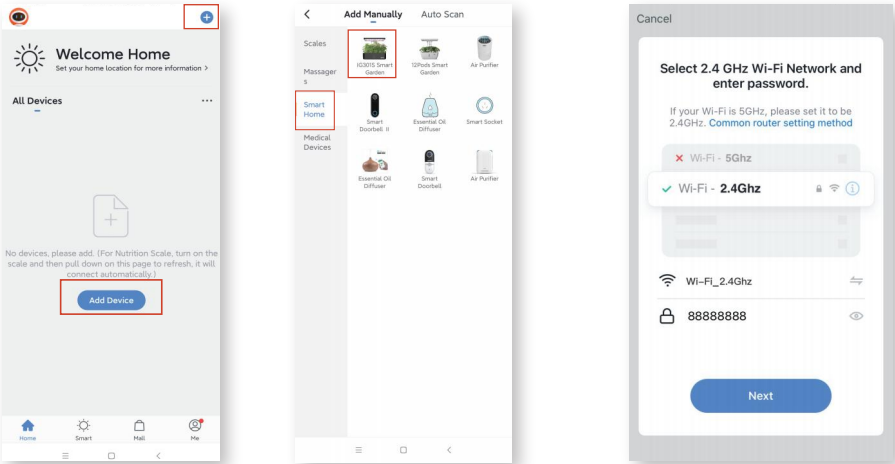
Click "Add Device" or "+" on the upper right corner, then click "Auto Scan" to detect the device and pair following the in-app instructions.



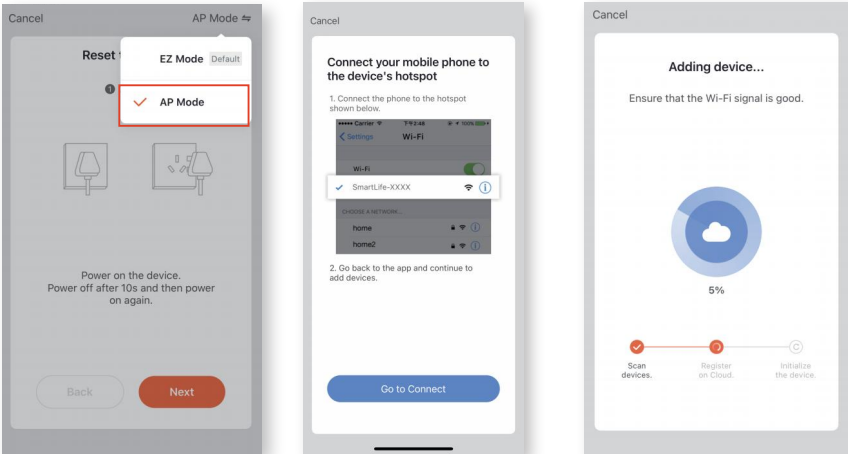
Method 3

If the Default Configuration Mode (EZ Mode) fails to connect, you can use AP (Access Point) Mode. This mode enables you to connect your mobile phone to the device's hotspot first and then add the device.

1. Follow the following steps.



2. Tap the upper right corner and switch to AP Mode, then reset and connect the device following the in-app instructions step by step.

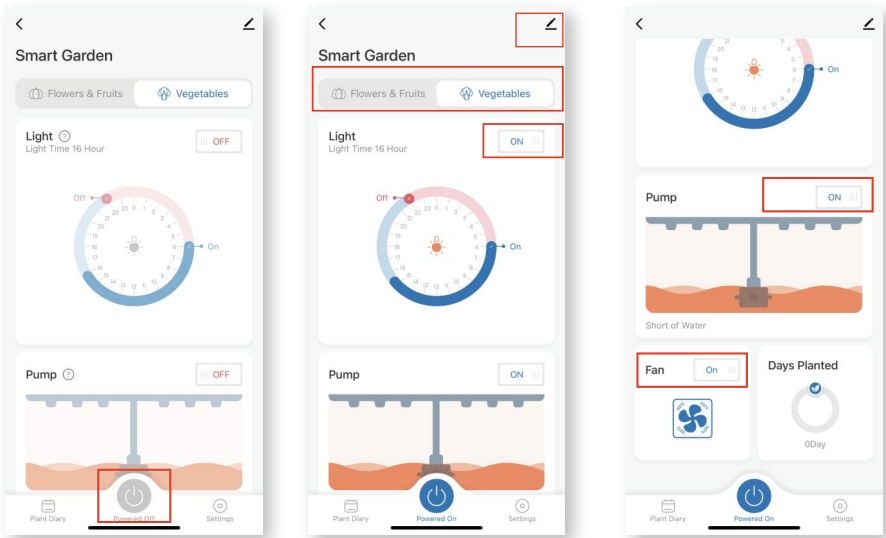


Power indicator light	Status
Green light flashes rapidly	EZ Mode
Green light flashes slowly	AP Mode
Solid green light	Wifi connected
Yellow light flashes	Connect router available
Solid red light	Router disconnected

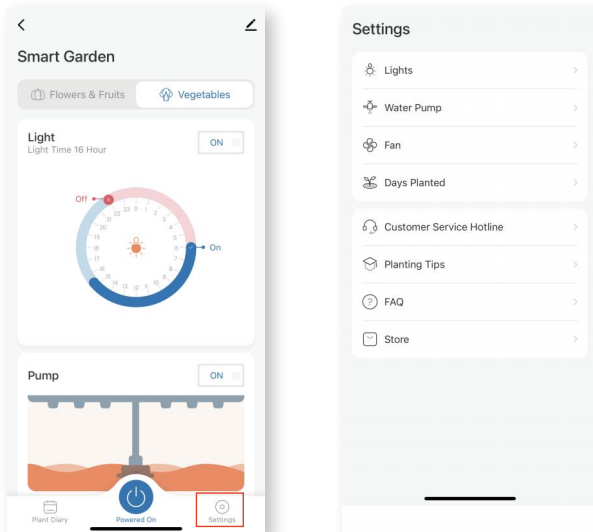
4. Operation

After pairing successfully, you will be directed to the Home Page. Click “Power On/Off” to turn on/off the device.

Click corresponding keys to control the settings of Flowers & Fruits/Vegetables modes, Light, Pump and Fan.

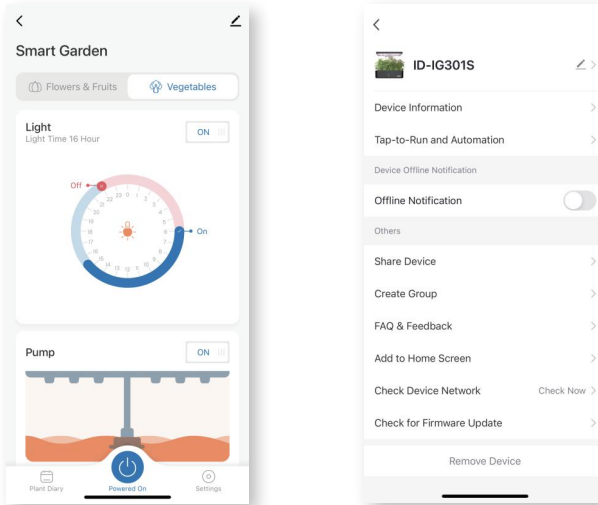


Click the “Settings” icon to adjust the following functions.



5. Remove the Device

To disconnect the device, click the pen icon on the upper-right corner in the Home Page to enter the interface, slide down and tap "Remove Device".



For more detailed instructions for App, please scan the QR code below to access and read.



<https://www.idooworld.com/pages/documents-drivers>

Product Maintenance

Changing Water

1. The nutrient concentration will be higher as water evaporates in a high-temperature environment. It is advised to change the water approximately once every 7-15 days.
2. After the plants bloom, change the water once a week to ensure that the potassium content is sufficient. There is a drain hole at the back of the water tank. Remove rubber plug and let the water flow out.



Note: When changing water, always ensure to add nutrient solution in proportion.

Cleaning Pump

Clean the water pump at least once a month.

Step 1: Turn the power off and remove the top cover of the water tank.

Step 2: Unplug the pump and remove the filter cover from the water pump.

Step 3: Take out the cotton. Rinse the cover and cotton with water ONLY. Any washing liquid will harm the nutrition balance.

Step 4: Put the cotton back into the cover and reinstall to the water pump.



Note: During the planting process, if there are dead or badly growing plants, remove them to prevent root erosion bacteria from affecting the growth of other plants. If root rot has occurred, it is recommended to clean and disinfect the water tank to avoid affecting other plants.

Place Your Garden Kit

on a sturdy, water-tolerant surface;

in a 59°F-86°F (15-30°C) environment (optimal);

beyond the reach of children or pets;

away from direct sources of heat (stove, furnace vents, e.g.,) or cold (window drafts, A/C vents, e.g.,).

It does not need any additional light or a sunny window. However, too much direct sunlight may overheat your plants.

Frequently Asked Questions & Answers

1. Why do only a few plants grow and then wither quickly?

- The seeds you purchase make a difference. For best results, buy seeds from reliable manufacturers and avoid those not suitable for water hydroponic devices.
- Be sure to add the correct proportion of nutrient solution to water.
- Keep the LED grow lights at least 12cm/4inch from the plants and place them in a 59°F-86°F (15°C-30°C) environment.

2. Why does the pump start with noise?

- The noise is caused by the unpleasant air in the water pump when it is used for the first time. It can be eliminated by continuously working for 3 to 5 minutes or restarting it multiple times.
- When the water level is below the pump, the pump may operate with noise. Add water to 4L, and the noise will stop.
- Open the water pump and take out the filter cotton to check whether there is a jam inside.

3. Can sponges be reused?

It is reusable when the stems of a plant are pulled out of the sponges. However, it is not recommended to do so as it will not be as good as the first usage. We have a specific link if you want to purchase additional sponges.

4. Does it kill the plant while removing it from a sponge (if I prefer to move it to a pot, for example)?

Usually, it won't kill the plants. It is recommended to wait until it's vigorous and when the survival rate is high.

5. Why does it not germinate?

It can vary depending on the temperature. You can try to grow it in the soil to test whether it is the seed problem.

6. Why does it not bloom or bear fruit?

Make sure the nutrition is enough. Keep in mind to add water while adding a proportionate amount of nutrients.

7. How can you prevent the sponge from getting moldy or developing algae?

Basket labels are included in the package to prevent the sponge from developing moldy/algae. You can also cover the sponge with an opaque film, such as tin foil.

Warranty (1-Year Period)

The manufacturer's warranty is void under the following circumstances but not limited to:

- Improper or inadequate maintenance or modification.
- Accident, misuse, abuse, contamination, or other external causes.
- The use of unspecified adapter and accessories.
- Loss or damage in transit.
- Damages that occur as a result of one's failure to follow the instructions.
- This warranty does not apply to expendable or consumable parts and does not extend to any product from which the serial number has been removed.

Customer Service

We have an award-winning warranty, exchange, and customer service team that guarantees hassle-free solutions to any issue you might have within the 24 business hours.

 **Tel: +1(951)751-2590 (US ONLY)**

Monday-Friday: 9:00AM-4:30PM

 **Email: support@idooworld.com**

*For defective products or the return of items, please contact us with your order number within the specified warranty period. DO NOT dispose of any product parts as they may be required for inspection/repair.

FCC Regulatory Compliance

This device complies with part 15 of the FCC Rules. Operation is subject to the following two conditions:

(1) This device may not cause harmful interference, and (2) this device must accept any interference received, including interference that may cause undesired operation.

Warning: Changes or modifications not expressly approved by the party responsible for compliance could void the user's authority to operate the equipment.

Note: This equipment has been tested and found to comply with the limits for a Class B digital device, pursuant to Part 15 of the FCC Rules. These limits are designed to provide reasonable protection against harmful interference in a residential installation. This equipment generates, uses and can radiate radio frequency energy and, if not installed and used in accordance with the instructions, may cause harmful interference to radio communications. However, there is no guarantee that interference will not occur in a particular installation. If this equipment does cause harmful interference to radio or television reception, which can be determined by turning the equipment off and on, the user is encouraged to try to correct the interference by one or more of the following measures:

- Reorient or relocate the receiving antenna.
- Increase the separation between the equipment and receiver.
- Connect the equipment into an outlet on a circuit different from that to which the receiver is connected.
- Consult the dealer or an experienced radio/TV technician for help.

RF Exposure Compliance

This equipment complies with FCC radiation exposure limits set forth for an uncontrolled environment. This transmitter must not be co-located or operating in conjunction with any other antenna or transmitter.

ISED Regulatory compliance

This device contains licence-exempt transmitters that comply with Innovation, Science and Economic Development Canada's licence-exempt RSS(s).

Operation is subject to the following two conditions:

(1) This device may not cause interference.

(2) This device must accept any interference, including interference that may cause undesired operation of the device.

Le présent appareil est conforme aux CNR d'Industrie Canada applicables aux appareils radio exempts de licence.

L'exploitation est autorisée aux deux conditions suivantes:

(1) l'appareil ne doit pas produire de brouillage, et (2) l'utilisateur de l'appareil doit accepter tout brouillage radioélectrique subi, même si le brouillage est susceptible d'en compromettre le fonctionnement.

This equipment complies with IC RSS-102 radiation exposure limits set forth for an uncontrolled environment.

Cet équipement est conforme aux limites d'exposition aux radiations IC CNR-102 établies pour un environnement non contrôlé.



US Importer: JOICOM CORPORATION

14129 The Merge Street, Building 3 Unit A, Eastvale, CA 92880

Manufacturer: Shenzhen Ruiyi Business Technology Co., Ltd.

Qianhai Complex A201, Qianwan Road 1, Qianhai
Shenzhen-Hong Kong Cooperation Zone, Shenzhen, 518000 P.R.China

MADE IN CHINA

NA1