

Read Before Installation



Always Ready, Always on



@CyeleeOptics

www.cyeleeoptics.com

support@cyeleeoptics.com

We strive to supply optic solutions at affordable prices. For questions or warranty support please reach via our website or above email address.



Included

CAT Pistol Optic

T10 & Flathead Allen Wrenches

Microfiber Cloth

Mounting Screws

Battery Instation

To install a new CR2032 battery, first turn the optic upside down. Then place the battery into the optic so the positive(+) side is facing up.

Power On & Off /Illumination Control

❶ The + button turns the optic on if previously off



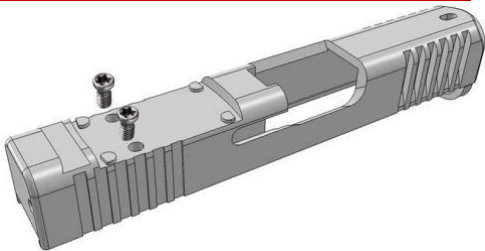
② While on the + button raises the brightness and the – button lowers it. The sight has 10 illumination settings; 8 daytime and 2 night vision.



③ The – button will turn off the optic if held for 3 or more seconds. Turning off the optic is for long term storage only, while off Shake Awake is not active and your optic will need to be manually turned on.

④ While on the optic will automatically enter standby mode after 5 minutes of non-use. As soon as the sight senses motion it will automatically become active again.

**WARNING – TEST SCREWS ON YOUR
SLIDE BEFORE INSTALLING WITH OPTIC**





Fits the following, Canik Elite TP9 SC, Canik METE SFT, Sig P365XL/P365X, Ruger Max-9, Glock 43X MOS/48 MOS(not compatible with non-MOS Glocks), Springfield Hellcat OSP, S&W Shield 2.0 Optics Ready, S&W MP9 EZ, S&W M&P shield plus performance center, Walther PPS M2 Optics Ready pistol, Girsan MC1911SC Ultimate or any pistols/mounting plates/slides made for Shield RMSC/RMS, Sig Romeo 0, JPOINT4, Holosun HS407K/HS507K + any footprints compatible with the above.

NOTE: Maximum Torque is 15lb-ft, we recommend Loctite 222, anything about Blue/242 or equivalent can become permanently stuck.



WARNING!!! READ BEFORE USE!!!

"UP" Refers to Point of Impact NOT the actual dot! **This is an industry wide standard...**

If you rotate in the direction of the arrow that says "UP" the dot will move **DOWN**, meaning the place your bullet will hit moves UP (comparitvely)

**TURN
CLOCKWISE**



RESULT



**DOT
MOVES
DOWN**



**TURN
CLOCKWISE**



RESULT



**DOT
MOVES
LEFT**



If you encounter strong resistance do NOT force the adjustment, it will cause damage not covered under our warranty!



Instead of a dot I see a splashed dot, half-moon shape, starburst etc

You may have astigmatism that you are not aware of. Any deformation of your red dot can be tested simply and quickly by making sure your phone camera lens is clean and then using it to look at your optic. Please check that other light sources and brightly lit objects aren't being smeared on your camera before determining if the dot is clean or smeared. If the dot is clean on your phone but distorted or smeared to your eyes this is likely due to astigmatism. Many people only realize they have it after buying red dots due to the strong pinpoint directed light which makes it obvious whether it is clear or has visual distortions. For those with astigmatism please consider trying green dots, they do not always help but many with astigmatism give feedback that they can help.



Warranty

3 Year Warranty Covering Manufacturing Defects - Please contact Cyelee Optics for repair or replacement.

This warranty does not cover normal wear and tear, modifications, misuse, accidents.



CYELEE

Cyelee Optics

www.cyeleeoptics.com