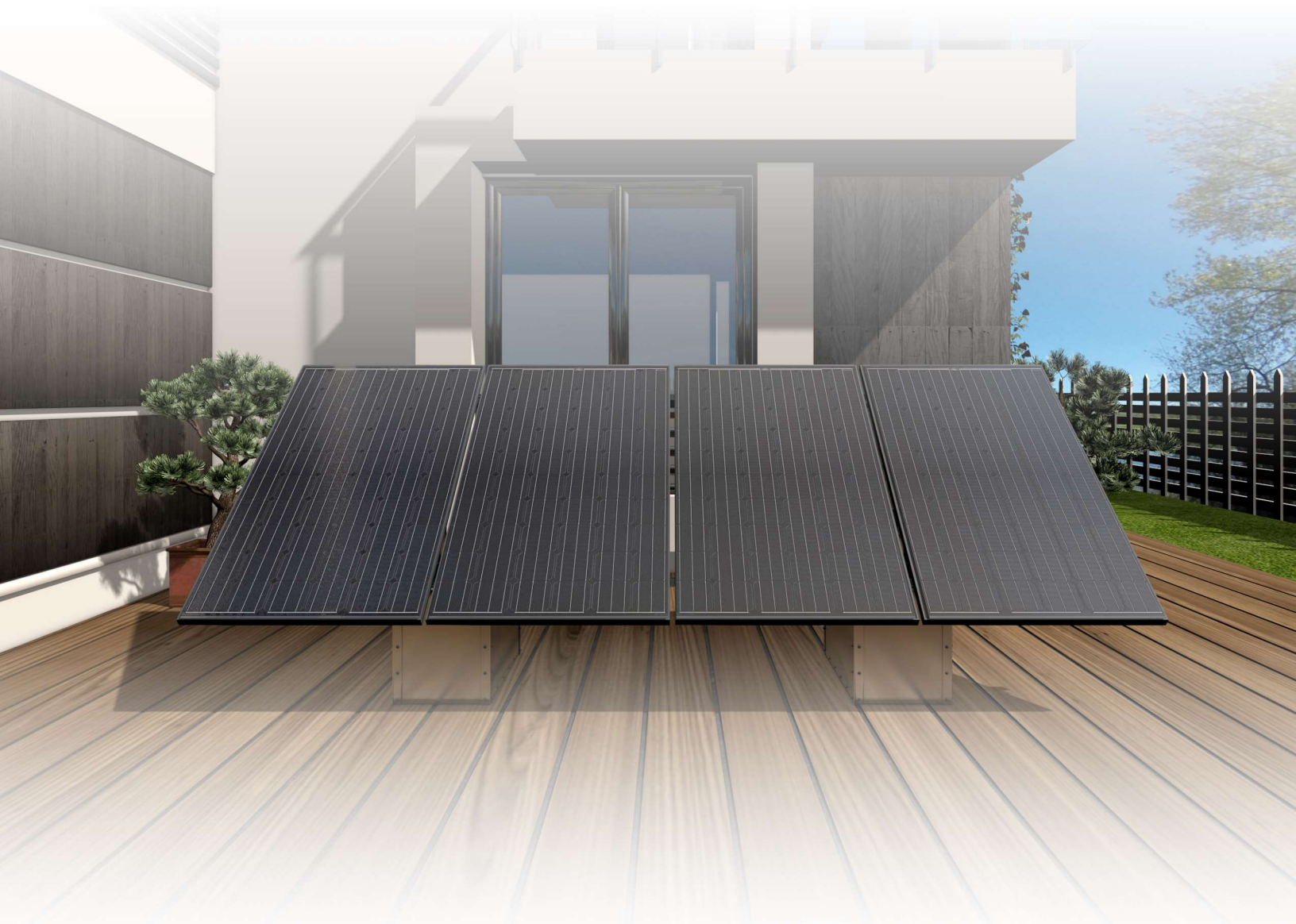


GROUND- MOUNTED
PHOTOVOLTAIC

GSE **GROUND SYSTEM**TM V3.0

Ground-mounted system for framed photovoltaic modules

Functional, Aesthetic,
Quick to install, Simple...



CHUBB[®]
Liability insurance



RESIDENTIAL PHOTOVOLTAIC

The **GSE GROUND SYSTEM** allows the installation of photovoltaic modules on the ground without drilling or specific masonry.

**IDEAL SOLUTION FOR ROOF PV
INSTALLATION COMPLEMENT AND
SELF-CONSUMPTION !
EASY TO INSTALL, TO BALLAST, TO
MOVE !** ”



TECHNICAL SPECIFICATIONS



Portrait installation in multiples of 2 modules



Adjustable inclination from 7° to 40°



Color : «Galvanized steel»
(lacquering on request)



Material : Galvanized steel



Weight without ballast : 8 kg / module



Ballast system : sand, gravel, cement, concrete slabs ...



Safety : Possibility to use microinverters : very low voltage operation for safe wiring

“Fits 95% of the PV Modules on the Market”

ADVANTAGES



- **Resolves roof space problems**
→ Portrait installation for reduced dimensions
- **Installation time and cost reduced**
- **Compatible with all type of ground**
→ no problem with grass height
- **Compatible with all module sizes**
- **Compact and lightweight**
- **100% Recyclable**

CONTACT

