

Assembly Manual



■ What's In The Box

Please inspect the contents of your shipped package to ensure you have received everything that is listed below.



Studio Stand



Upper Column



3 x Wheels



Side Spigot Arm



1 x T-Type Allen Key
(Size:4mm)



1 x Spanner
(Size:7)

All rights reserved.

No part of this document may be reproduced, stored in a retrieval system, or transmitted by any form or by any means, electronic, mechanical, photo-copying, recording, or otherwise, except as may be expressly permitted by the applicable copyright statutes or in writing by the Publisher.

Camera Stand Setup

- Attach the studio stand and wheel by matching the holes.



- Secure the wheel by tightening them properly with the help of a spanner. As shown in the image.



- Similarly, attach the remaining wheel with the Studio Stand following the same process.



- Pull open with the help of the wheel of the studio stand. As shown in the image.

NOTE: The collapsible design of the legs allows the stand to fold up into a compact size, ensuring quick setup, easy storage & travel.



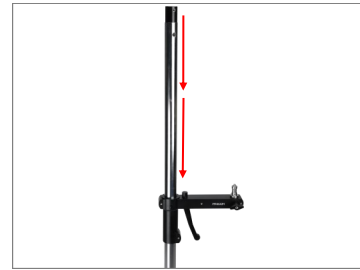
- Stretch out the legs of the Stand and securely tighten them using the provided knob.



- Push the side spigot arm into the stand.



- Once the arm is properly inserted, you can again press the Spigot Arm to an upward/downward position.



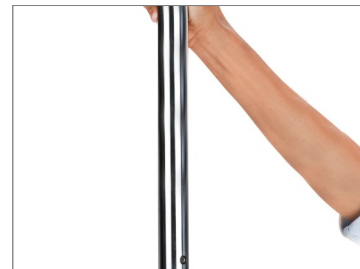
NOTE: The Castor Wheels provide easy & smooth movements across sets and lock via the footbrake that each one of them is equipped with.



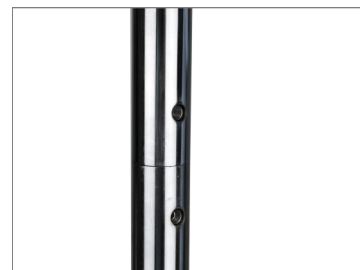
- Remove the grub screw attached to the studio stand by loosening it with the help of the Allen key



- Then insert the upper column matching the screw holes of the studio stand.

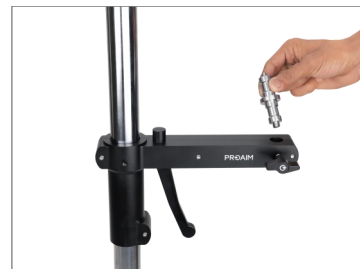


- Again, Insert the grub screw and tighten it properly with the help of the Allen key. Then properly secure the upper column. As shown in the image.

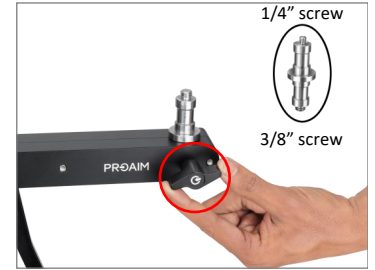


- Loosen the knob of the spigot arm, then remove the baby pin to change the angle of the baby pin.

NOTE: The Side Spigot Arm comes equipped with an adapter spigot which has a 1/4"-20 screw on one side and a 3/8"-16 screw on the other side for facilitating multiple setup configurations.



- Now insert the Baby Pin after changing its angle and secure it by tightening the knob of the Spigot Arm.



- Mount the flashlight (Not Included) on the 5/8" baby pin.

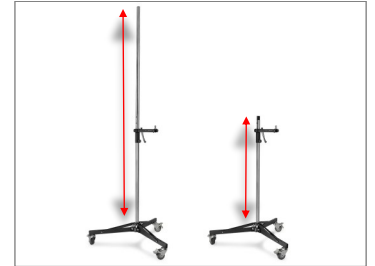
NOTE: The Side Arm offers multiple setup configurations via the adapter spigot and 5/8" Baby Pin receiver.



- Versatile height: Use with or without the upper column.

Maximum: 7.6ft / 92"

Minimum: 4ft / 49"



- Here is the final assembled image of the Studio Camera Stand.



**YOUR PROAIM SS90 STUDIO CAMERA STAND 4FT / 8FT
ALL DRESSED UP AND READY TO GO!**



(SHOWN WITH OPTIONAL ACCESSORIES)

Warranty: We offer one year warranty for our products from date of purchase. Within this period of time, we will repair it without charge for labor or parts. Warranty doesn't cover transportation costs nor does it cover a product subjected to misuse or accidental damage. Warranty repairs are subjected to inspection and evaluation by us.

Liability: We are not liable for damage caused by products that we do not supply or from mishandling in transit, accident, misuse, neglect, lack of care of the product, or service by anyone other than our company.

Contact Us: In case of any kind of dissatisfaction, please Contact us immediately and we promise our utmost support and care until you use our product.