

Vanguard Carriage Studio Production Cart (CT-VNGD-CS3)

Assembly Manual



What's In The Box

Please inspect the contents of your shipped package to ensure you have received everything that is listed below.



Carriage Top Handel Part



Carriage Base Wheel Part



- 1 x 12mm Spanner
- 1 x 13mm Spanner

All rights reserved.

No part of this document may be reproduced, stored in a retrieval system, or transmitted by any form or by any means, electronic, mechanical, photo-copying, recording, or otherwise, except as may be expressly permitted by the applicable copyright statutes or in writing by the Publisher.

Vanguard Cart Setup

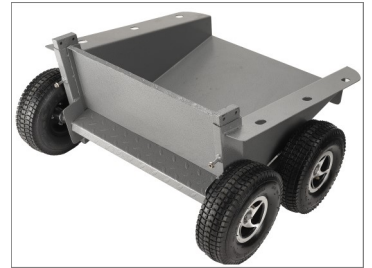
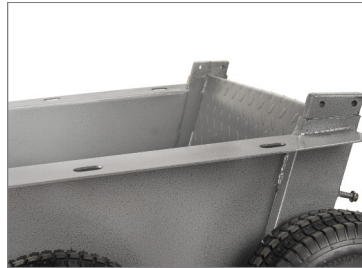
- Loosen and remove the bolts at the side of the base wheel using the spanner. Repeat the same process to remove the second bolt.



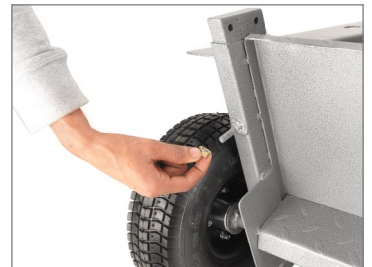
- Similarly, follow the same process to remove the bolt on the other side of the base wheel part.



- Remove all the bolts of both sides, as shown in the image.



- Loosen and remove the bolts at the bottom of the base wheel using the spanner.



- Similarly, follow the same process to remove the bolt on the other side of the base wheel part.



Top Handel Part Assembly with Base Wheel Part

- Align & attach the top handle with both sides of the base wheel, as shown in the image.



- Insert the bolt after matching the threads of the top handle and the base wheel. Secure the bolt by inserting the nut.



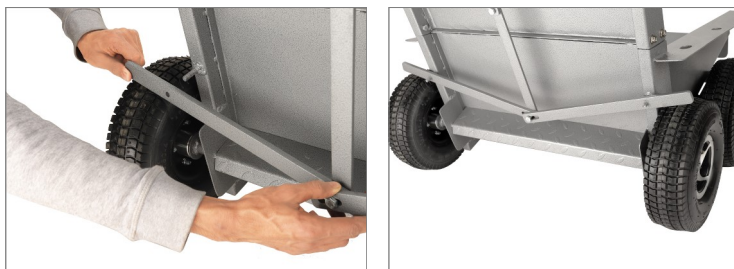
- Tighten and secure the nut using the spanner. Follow the same process to secure the bolts on the other side.



- Both the side bolts are properly tightened, as shown in the image.



- Insert the hand brake into the bottom thread of the base wheel. Follow the same process to insert the brake on the other side.



- Now insert the nut and then tighten it using the spanner.



- The hand brake has now been properly attached to both sides of the base wheel.

NOTE: Two 10" Rigid and two 10" Swivel Pneumatic wheels facilitate effortless mobility around the set.



- To lock the Vanguard cart movement, pull the hand brake upwards and lock it.



- The wheels of the cart are now properly locked, making the movement of the Vanguard more stable.



Hand brake is Unlock



Hand brake is locked

NOTE: Handling, ergonomic grip handles let you comfortably move the cart around without placing too much stress on your hands.



NOTE: Carry heavy-duty gear like cables, apple boxes, milk crates, sandbags, etc., around the set with this super-functional Vanguard Cart, rendering immense support & stability. Constructed with high-grade mild steel, the cart offers an impressive payload of 454kg / 1000lb.



**YOUR PROAIM VANGUARD CARRIAGE STUDIO PRODUCTION CART
ALL DRESSED UP AND READY TO GO!**



(SHOWN WITH OPTIONAL ACCESSORIES)

Warranty: We offer one year warranty for our products from date of purchase. Within this period of time, we will repair it without charge for labor or parts. Warranty doesn't cover transportation costs nor does it cover a product subjected to misuse or accidental damage. Warranty repairs are subjected to inspection and evaluation by us.

Liability: We are not liable for damage caused by products that we do not supply or from mishandling in transit, accident, misuse, neglect, lack of care of the product, or service by anyone other than our company.

Contact Us: In case of any kind of dissatisfaction, please Contact us immediately and we promise our utmost support and care until you use our product.