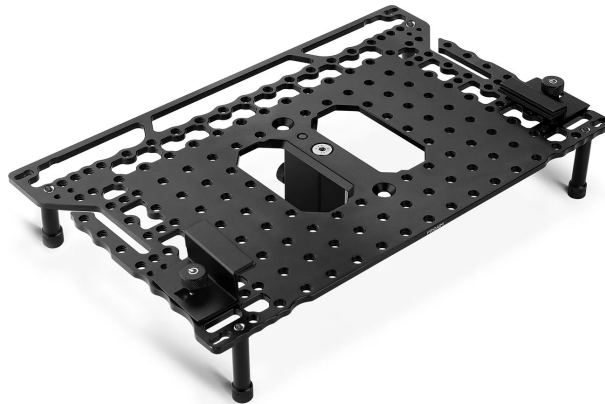
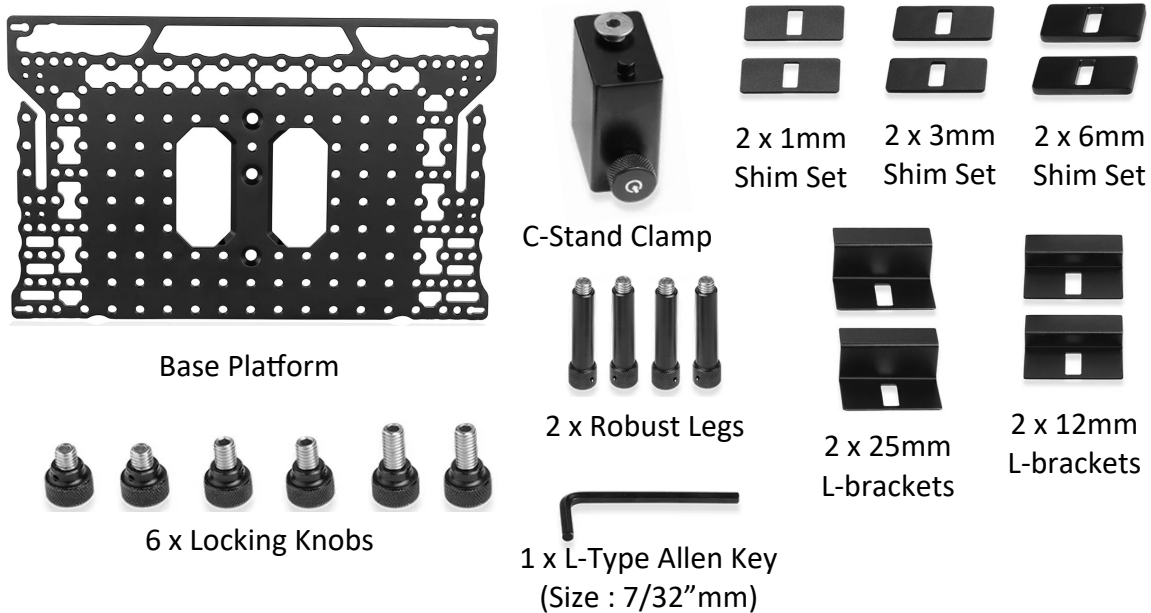


## Assembly Manual



### What's In The Box

Please inspect the contents of your shipped package to ensure you have received everything that is listed below.

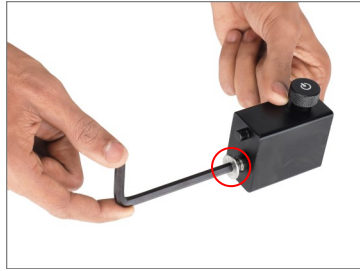


All rights reserved.

No part of this document may be reproduced, stored in a retrieval system, or transmitted by any form or by any means, electronic, mechanical, photo-copying, recording, or otherwise, except as may be expressly permitted by the applicable copyright statutes or in writing by the Publisher.

## Universal Laptop Workstation Setup

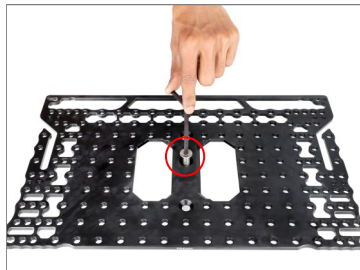
- Remove the bolt from the C-stand clamp with the help of the Allen key.



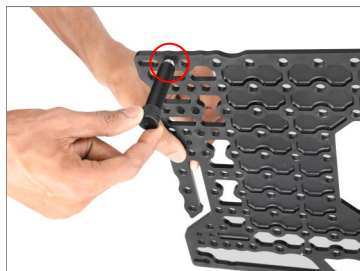
- To attach the C-stand adapter, align it with the threads at the bottom of the workstation.



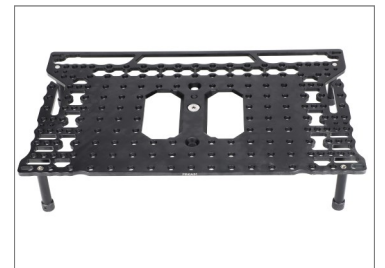
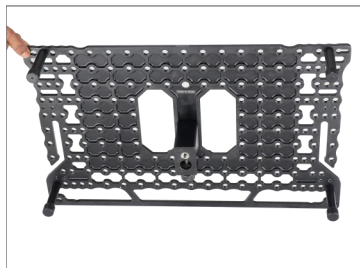
- Insert the bolts by matching them with the threads from the bottom of the workstation (**Not Included**), and then attach the C-stand adapter. Properly tighten the bolts using the Allen key.



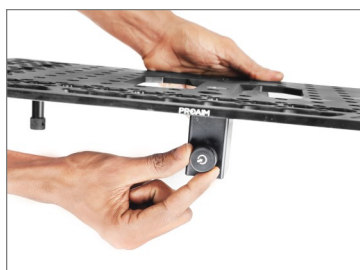
- Attach all the legs at the corners of the workstation and tighten them by twisting.



- The workstation will look like this.



- Loosen the knob of C-stand adapter and mount it on the baby pin of the C-stand.



- Mount the laptop workstation on the C-stand and tighten the adapter knob to secure it properly.



- Place Your laptop (Not Included) on the workstation.

**Compatibility:** Laptop with 10-25mm thickness



- After placing the laptop on the workstation place the shims to increase the adjustable thickness of your laptop. Now place the L-bracket on it.



- Tighten and secure the L-brackets using the locking knob.

**NOTE:** Locking knobs are available in three sizes. You can use locking knobs according to the thickness of your laptop.



- Universal Laptop Workstation is ready to use.

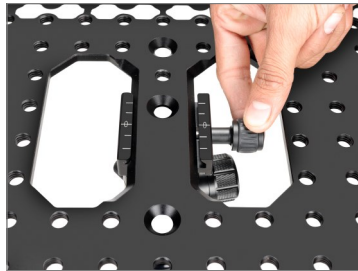


## ■ Tripod Ball Head Setup

- Loosen the knob of the ball head on the tripod stand (**Not Included**) and mount the base platform.



- After mounting the base platform, tighten the knob properly.
- Finally, the base platform is mounted on the tripod.



**NOTE:** This workstation easily accommodates a laptop with a thickness of 10-25mm. To ensure a secure setup, clamps are provided to affix the laptop to the platform.



**YOUR PROAIM UNIVERSAL PLUS LAPTOP WORKSTATION PLATFORM  
ALL DRESSED UP AND READY TO GO!**



**(SHOWN WITH OPTIONAL ACCESSORIES)**

**Warranty:** We offer one year warranty for our products from date of purchase. Within this period of time, we will repair it without charge for labor or parts. Warranty doesn't cover transportation costs nor does it cover a product subjected to misuse or accidental damage. Warranty repairs are subjected to inspection and evaluation by us.

**Liability:** We are not liable for damage caused by products that we do not supply or from mishandling in transit, accident, misuse, neglect, lack of care of the product, or service by anyone other than our company.

**Contact Us:** In case of any kind of dissatisfaction, please Contact us immediately and we promise our utmost support and care until you use our product.