

Universal Bi-Prompter Teleprompter Kit (TP-BIPT-01)

Assembly Manual



■ What's In The Box

Please inspect the contents of your shipped package to ensure you have received everything that is listed below.



Bi-Prompter Teleprompter Kit



Teleprompter Glass



Camera Mounting Base



Rod Adapter



Ring Clamp
(150-100mm)
(OD-ID)



Ring Clamp
(150-75mm)
(OD-ID)



Ring Clamp
(150-65mm)
(OD-ID)



Ring Clamp
(150-50mm)
(OD-ID)



Ring Clamp
(150mm)
(OD)



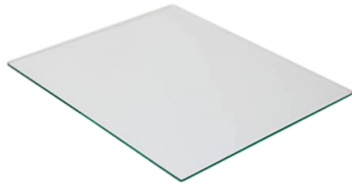
C-Stand Adapter



Tablet Holder

All rights reserved.

No part of this document may be reproduced, stored in a retrieval system, or transmitted by any form or by any means, electronic, mechanical, photo-copying, recording, or otherwise, except as may be expressly permitted by the applicable copyright statutes or in writing by the Publisher.



Teleprompter Glass



2 x 300mm Rods



2 x LN CSK Bolts (Sizes: 3x8")



Hand Gloves



3 x Allen Keys
(Sizes: 3mm, 4mm &
5/16" mm)



2 x Cleaning Clothes



Bag Packing

■ Bi-prompter Teleprompter kit Setup

- Insert the rod adapter into the Bi-Prompter teleprompter and then insert the c-stand adapter.



- Properly tighten the c-stand adapter, as shown in the image.



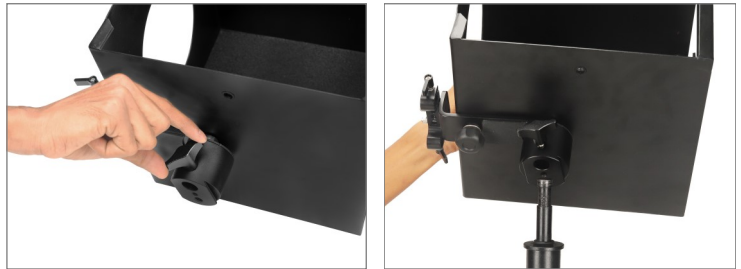
- Remove the knob by loosening it.



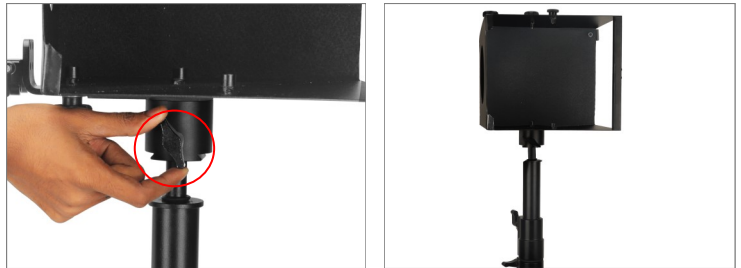
- Insert the knob into the Rod Adapter and then tighten it properly.



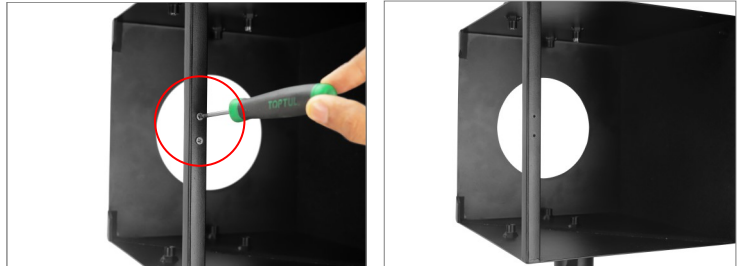
- Loosen the knob of the c-stand and mount the Bi-prompter to the stand (**Not Included**).



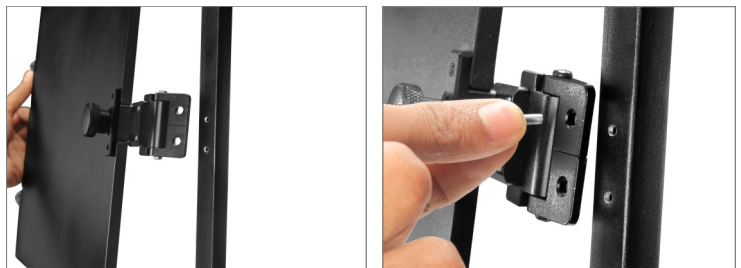
- Properly tighten it with the knob.
NOTE: The kit includes multiple receivers 16mm, 1/4"-20, and 3/8"-16, allowing you to mount on a regular C-stand .



- Remove the CSK bolts, as shown in the image.



- Place the teleprompter glass and insert the 3x8" CSK bolts.



- Tighten the bolts using a screw driver.



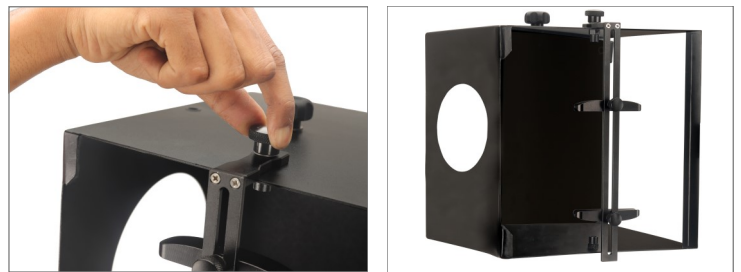
- Remove the knob after loosening it, as shown in the image.



- Insert the tablet holder and then insert the knob.



- Properly tighten the knob, as shown in the image.

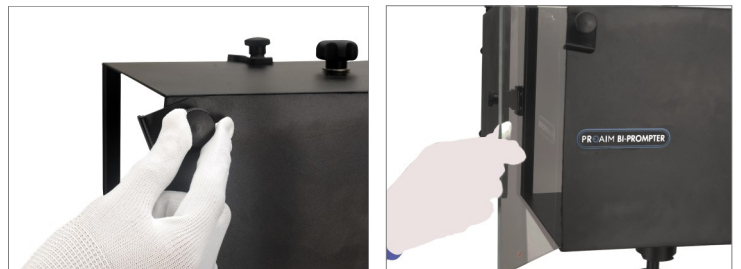


NOTE: Tablet holder is made with High-Grade Plastic, High-Grade Mild steel & Aluminum & used to mount Tablet (Standard or Large Size).



Inserting Teleprompter Glass In Bi-Prompter

- Loosen the knob and insert the teleprompter glass.



- Properly tighten the knob, as shown in the image.



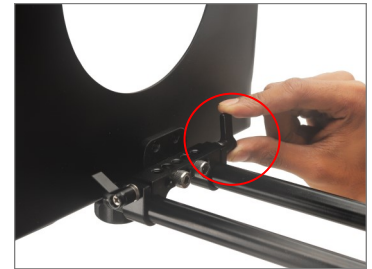
NOTE: Bi-prompter is a mirror box positioned in front of the camera lens that lets filmmakers shoot down-the-lens interviews while keeping the interviewer and subject in eye contact .



- Loosen both the knobs and insert the 300mm rod.



- Insert an another 300mm rod and tighten the knobs properly.



NOTE: The Bi-prompter is built around a standard rod system which easily fits the camera.



■ Camera Mounting Base Setup

NOTE: Camera Mounting Base provides Height adjustment feature.



- Loosen both the knobs of the camera mounting base and insert the rods.



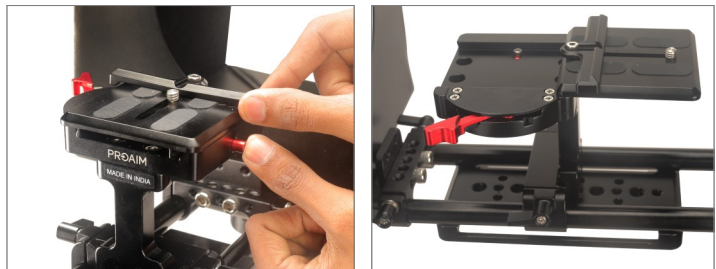
- Tighten both the knobs, as shown in the image.



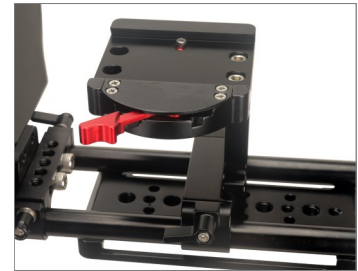
- Loosen the lever lock by moving it in forward direction.



- Press the push pin and slide the quick release plate.



- Remove the quick release plate.
NOTE: The quick-release offers you easy swapping of camera gimbals & protects your gimbal from twisting & scratching.



- Remove the camera support using the Allen key.
NOTE: It comes with an adjustable quick release camera platform to lock the camera in its desired position.



- Insert the camera support to the opposite direction and tighten it properly.



- Properly match the camera (Not Included) with the quick release threads and tighten it with the screw driver.

NOTE: Quick Release constructed of High-Grade CNC Aluminum & features both 3/8"-16 and 1/4"-20 screws for mounting.

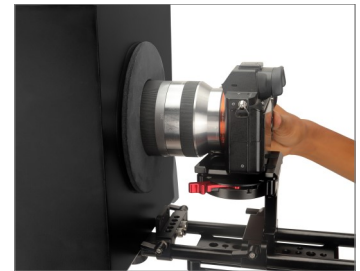


- Slide the camera (Not Included) on the camera plate and insert the Ring clamp.

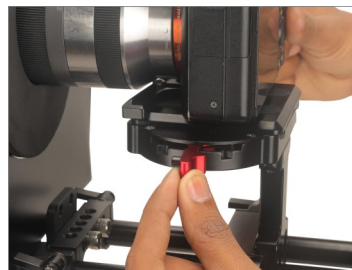
NOTE: Quick Release is a compact plate that quickly mounts handheld gimbals such as 3S, DJI Ronin S & RS 2 etc.



NOTE: It also includes 5 Donut Rings (Sizes: 50mm, 65mm, 75mm, 100mm) in different sizes to filter out your shots' excess light.



- Properly lock the lever, as shown in the image.



- Properly tighten it using the 3/16" Allen key and the knob.

NOTE: The kit includes multiple receivers 16mm, 1/4"-20, and 3/8"-16, allowing you to mount on a regular C-stand.



NOTE: Bi-prompter is a mirror box positioned in front of the camera lens that lets filmmakers shoot down-the-lens interviews while keeping the interviewer and subject in eye contact.



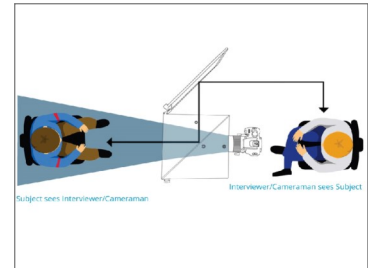
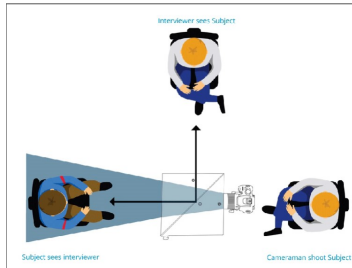
3-Different Modes of Bi-Prompter Teleprompter Kit

NOTE: Mode1: Interview Mode

In this, the Interviewer & subject will sit at 45° angle & reflect each other on the mirror.

Mode2: Interview mode (Mirror version)

In this, You see each other's expression through mirror.



Mode3: Teleprompting mode

In this, you mount any tablet to read while looking straight into the lens.



YOUR PROAIM UNIVERSAL BI-PROMPTER TELEPROMPTER KIT ALL DRESSED UP AND READY TO GO!



(SHOWN WITH OPTIONAL ACCESSORIES)

Warranty: We offer one year warranty for our products from date of purchase. Within this period of time, we will repair it without charge for labor or parts. Warranty doesn't cover transportation costs nor does it cover a product subjected to misuse or accidental damage. Warranty repairs are subjected to inspection and evaluation by us.

Liability: We are not liable for damage caused by products that we do not supply or from mishandling in transit, accident, misuse, neglect, lack of care of the product, or service by anyone other than our company.

Contact Us: In case of any kind of dissatisfaction, please Contact us immediately and we promise our utmost support and care until you use our product.