

PR◻AIM Tango 360° Camera Rotating Dutch Angle Rig (P-TNGO-01)

Assembly Manual



■ What's In The Box

Please inspect the contents of your shipped package to ensure you have received everything that is listed below.



Tango 360° Camera Rotating Dutch Angle Rig



Camera Platform



Camera Platform Rods with Stopper



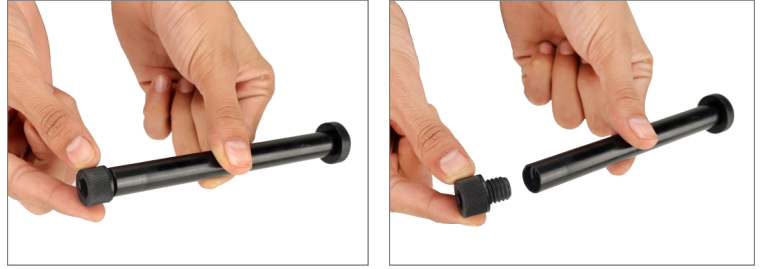
1.5mm L
Type Allen Key

All rights reserved.

No part of this document may be reproduced, stored in a retrieval system, or transmitted by any form or by any means, electronic, mechanical, photo-copying, recording, or otherwise, except as may be expressly permitted by the applicable copyright statutes or in writing by the Publisher.

■ Tango 360° Rig Setup

- Loosen and remove the stopper of the camera platform rods, as shown in the picture.



- Insert the rods into the camera platform and then secure them properly using a 1.5mm Allen key. Follow the same process on the other side as well.



- After inserting the rods into the camera platform hole, insert the stoppers from the bottom and tighten them to secure properly.



- Follow the same process on other side.



- Loosen and remove the stoppers from the camera platform rods, as shown in the picture.



- Loosen the red knob of the Tango 360° camera rotating Dutch angle rig and then insert it into the rods.



- After inserting it into the rods, secure it properly with the help of the red knob and then secure the rods properly from the top with the help of stoppers.



- Rods are properly secured via stopper.



■ Camera Setup

- Properly attach the Ball Head (**Not Included**) to the tripod, by matching it with the 3/8" thread of the Tripod.

NOTE: Tripod comes with a (1/4" & 3/8") quick tripod mounting threads.



- To give the Ball Head a 360° rotation, loosen the knob a little and then rotate the knob to tighten it again. To remove the Camera Plate, loosen the knob.



- Remove the camera plate as shown.



- Attach the camera plate to the bottom mounting 1/4" thread of tango dutch angle rig and secure it with the help of an Allen key.



- Then mount it on the Ball Head (**Not Included**) and properly secure it with the help of the knob.



- Mount the camera (**Not Included**) on the camera platform plate. It is provided with a (1/4"-20) Screw, properly secure it with the help of the Allen key.

NOTE: Camera platform adapts DSLR cameras with 1/4" screw.



- To move the camera platform's position up and down, loosen the red knob, then according to your requirement, set the height at a position where you want your camera and then properly tighten its knob.



NOTE: Height-adjustable camera platform, lets you position the camera at an accurate level where the shot requires.

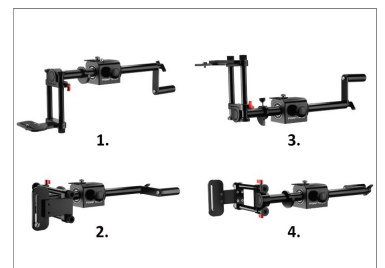


NOTE: Reproduce the shot without trouble, has angular ring and stopper to set rotation.



- Fix your setup on the Tango 360° Camera Rotating Dutch Angle Rig at a specific angle and secure it properly using the rotation lock. It facilitates a camera rotation lock so that you keep it to a specific angle for a static shot.

NOTE: Tango 360° Camera Rotating Dutch Angle Rig has a 360° rotation feature, It offers full 360° rotation around its lens and also, allows you to set the rotation angle



- To mount the tango angle rig on the fluid head (**Not Included**) release the top plate of the fluid head by pulling the red knob.



- Attach the fluid head (**Not Included**) by matching its top plate thread with bottom side of tango and secure them properly using an Allen key.



- After attaching the fluid head's top plate, mount it on the top of the fluid head (**Not Included**) and then push the red knob, as shown in the picture.



- Now your Setup is ready to use.



YOUR PROAIM TANGO 360° CAMERA ROTATING DUTCH ANGLE RIG ALL DRESSED UP AND READY TO GO!



(SHOWN WITH OPTIONAL ACCESSORIES)

Warranty: We offer one year warranty for our products from date of purchase. Within this period of time, we will repair it without charge for labor or parts. Warranty doesn't cover transportation costs nor does it cover a product subjected to misuse or accidental damage. Warranty repairs are subjected to inspection and evaluation by us.

Liability: We are not liable for damage caused by products that we do not supply or from mishandling in transit, accident, misuse, neglect, lack of care of the product, or service by anyone other than our company.

Contact Us: In case of any kind of dissatisfaction, please Contact us immediately and we promise our utmost support and care until you use our product.