

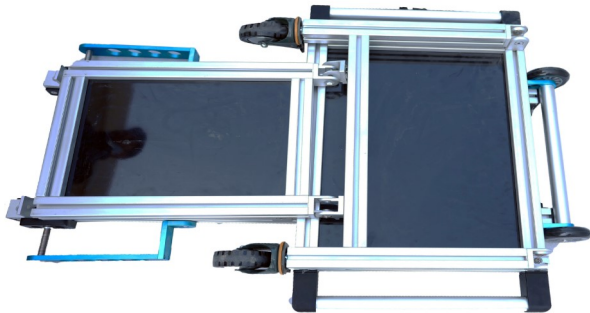
Soundchief Channel Cart (CT-SDCF-CV3)

Assembly Manual



What's In The

Please inspect the contents of your shipped package to ensure you have received everything that is listed below.



Proaim Soundchief CV3 Cart



2 x 16" Wheels



2 x Antenna Holder



2 x Safety Hook

Boom Clamp

Boom Cup

Boom Cup Mount



Boom Pole Kit



1 x Cup Holder



1 x Headphone Holder

All rights reserved.

No part of this document may be reproduced, stored in a retrieval system, or transmitted by any form or by any means, electronic, mechanical, photo-copying, recording, or otherwise, except as may be expressly permitted by the applicable copyright statutes or in writing by the Publisher.

Soundchief Channel Cart Setup

- Soundchief Channel Cart comes in a folded form. Attach the 16" wheel to the folded cart as shown in the image.



- Align the blue bracket to the center hole of the wheel. Next, insert a washer and screw in the wheel's center hole and secure it using L shaped Allen key.



- Secure the wheel to the cart using an Allen key. Then, follow the same process on the other side of the cart.



- Open the cart from its initially collapsed form, as shown in the image.



- Image showing cart adequately opened.



- Once the cart is opened, tighten the screw of bottom plate with an Allen key from the back.



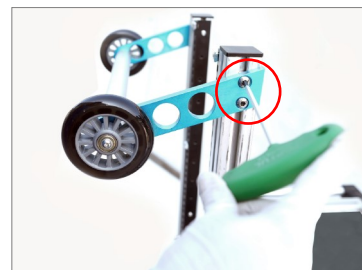
- Secure the penal plate and the bottom of the cart together using an allen key.



- Using an allen key, loosen the screw and slide the handle rod up as shown in the picture.

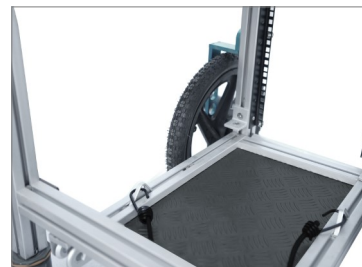


- Position the handle rod as per your requirement and tighten the screw using an allen key.

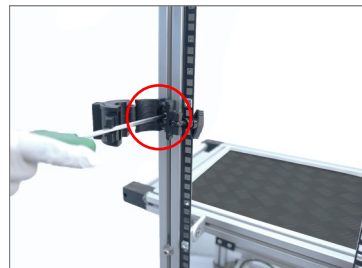


- Attach the safety hook to the bottom shelf of the cart, as shown in the image.

Note: With the help of safety hooks, the luggage does not fall and remains stable even while moving the cart.



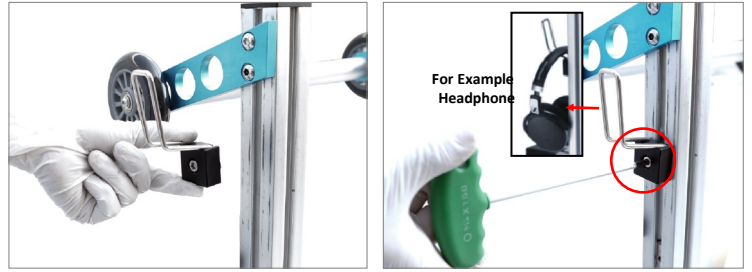
- Using an allen key install the antenna holder on the cart.



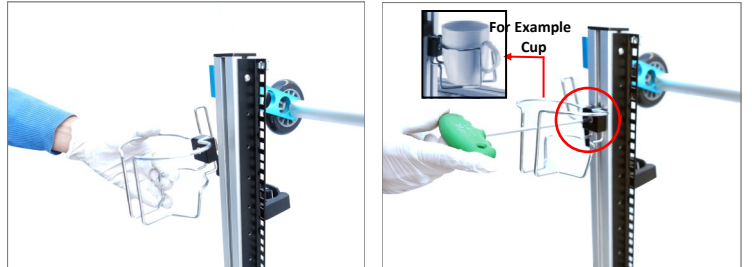
- Image showing antenna holder secured adequately to the cart.



- Attach the headphone holder to the cart and tighten it using an Allen key.

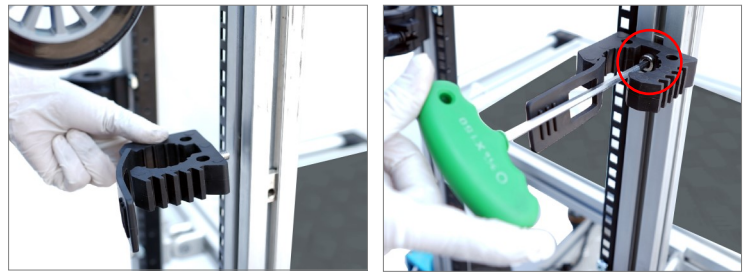


- Now attach the cup holder to the cart using an allen key, as shown in the image.

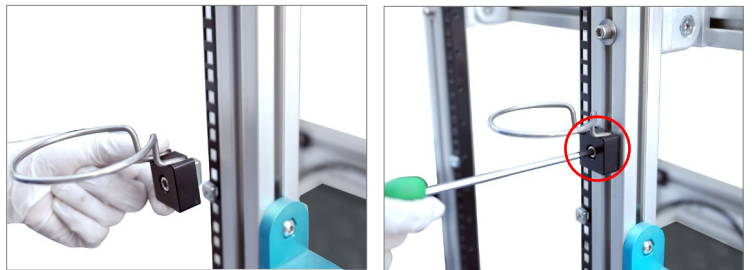


- To mount a boom pole to the cart, attach the boom clamp to the cart and secure it using an Allen key.

Note: The boom pole holder kit consists of 3 parts: boom clamp, boom cup, and boom cup mount. All three pieces are used to mount a boom pole to the cart.



- Next, securely install the boom cup mount at a short distance below the already attached boom clamp.

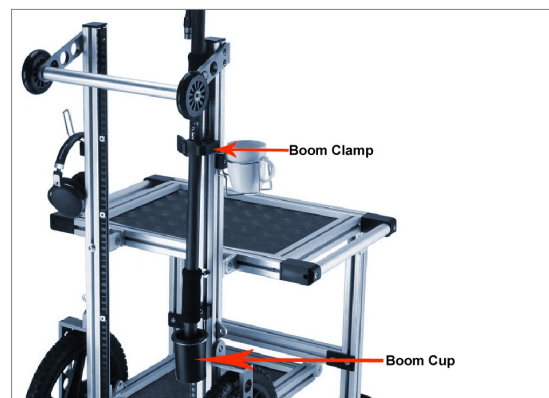


- Now, insert the boom cup into the cup mount.



Image showing boom pole (Not-Included) mounted to the cart.

Note: The bottom part of the boom pole rests in the boom cup.



Note: The whole cart is designed in the channel version so that you can fix the shelves wherever you want. The provided Rack Mount offers you the ease of accessorizing it.



YOUR PROAIM SOUNDCHIEF CHANNEL CART ALL DRESSED UP AND READY TO GO!



(SHOWN WITH OPTIONAL ACCESSORIES)

Warranty: We offer one year warranty for our products from date of purchase. Within this period of time, we will repair it without charge for labor or parts. Warranty doesn't cover transportation costs nor does it cover a product subjected to misuse or accidental damage. Warranty repairs are subjected to inspection and evaluation by us.

Liability: We are not liable for damage caused by products that we do not supply or from mishandling in transit, accident, misuse, neglect, lack of care of the product, or service by anyone other than our company.

Contact Us: In case of any kind of dissatisfaction, please Contact us immediately and we promise our utmost support and care until you use our product.