

Smart-Lock Bottom Drawer for Soundchief Cart Workstation (CT-SDCF-SD)

Assembly Manual



■ What's In The Box

Please inspect the contents of your shipped package to ensure you have received everything that is listed below.



Proaim Smart-Lock Drawer for Soundchief Cart



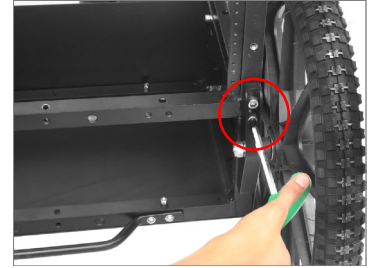
1 x L-type Allen key (5/16")
1 x Wrench (17)

All rights reserved.

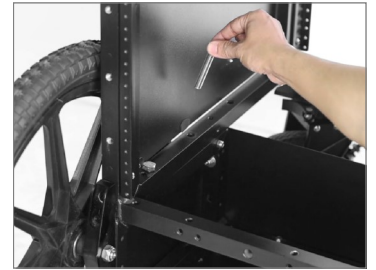
No part of this document may be reproduced, stored in a retrieval system, or transmitted by any form or by any means, electronic, mechanical, photo-copying, recording, or otherwise, except as may be expressly permitted by the applicable copyright statutes or in writing by the Publisher.

Smart-Lock Bottom Drawer Setup

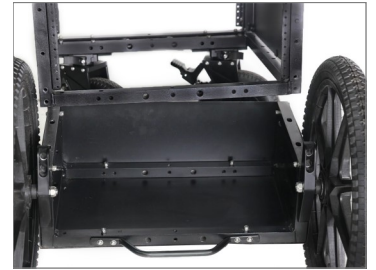
- Remove the bolts on the bottom wheel bracket of the Soundchief cart **(Not Included)** with the help of an Allen key.



- Using a wrench, unscrew the bolt on the inner bar of the Soundchief cart **(Not Included)** so that the upper and lower sections can be separated.

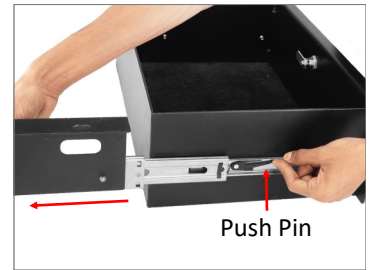


- Properly detach the upper and lower section of the Soundchief Cart **(Not Included)**.



Side Panel Detachment from Proaim Smart-Lock Drawer

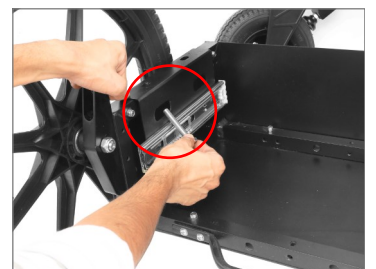
- Push the pin up slightly to properly detach the side panels and remove it properly from the Smart-Lock drawer.



- Follow the same process for removing the side panel of another side.



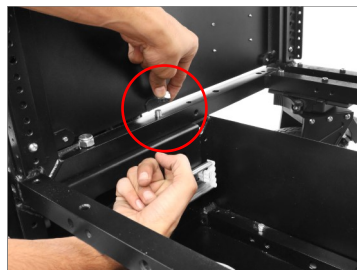
- Place the side panel in the center of the upper or lower section of the cart **(Not Included)**, and then insert the bolt by matching the hole.



- Insert the Allen bolt matching the thread holes of the cart and side panels.



- Secure the side panel to the lower section of the cart using washers and tighten it with the help of a wrench.



- Follow the same process as above to secure another side panel.

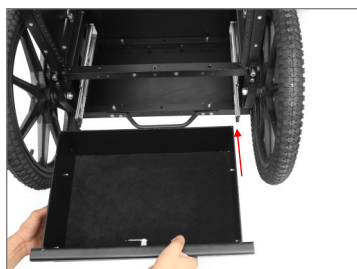


- Re-insert the bolts into the wheel bracket after attaching the side panel to the Soundchief cart (**Not Included**) and securely tighten the bolts with the help of an Allen key.



- Insert the Smart-Lock drawer manually by sliding it into the side panel, as shown in the image.

NOTE: The soft-closing side panel prevents the colliding & crashing of gears that is inside the drawer.



NOTE: Proaim Smart-Lock Drawer is a deep & fully enclosed drawer that takes in all suitable audio/video production accessories & facilitates convenient access to them along with protection.



NOTE: It features a 3-digit personalized combination lock. The smart-lock bottom drawer has a default lock code of '000'.



How to Fit Channel Lock Drawer Into Bottom Rack in Soundchief Cart, Follow this Video
<https://bit.ly/3BK6VoQ>

**YOUR PROAIM SMART-LOCK BOTTOM DRAWER FOR SOUNDCHIEF CART WORKSTATION
 ALL DRESSED UP AND READY TO GO!**



(SHOWN WITH OPTIONAL ACCESSORIES)

Warranty: We offer one year warranty for our products from date of purchase. Within this period of time, we will repair it without charge for labor or parts. Warranty doesn't cover transportation costs nor does it cover a product subjected to misuse or accidental damage. Warranty repairs are subjected to inspection and evaluation by us.

Liability: We are not liable for damage caused by products that we do not supply or from mishandling in transit, accident, misuse, neglect, lack of care of the product, or service by anyone other than our company.

Contact Us: In case of any kind of dissatisfaction, please Contact us immediately and we promise our utmost support and care until you use our product.