

Polaris Portable Dolly with Universal Track Ends (DL-PLRS-01)

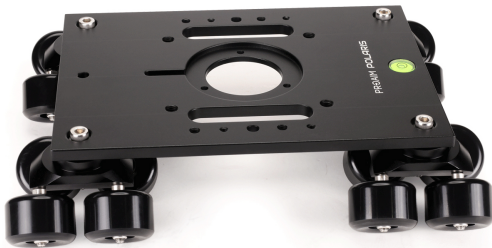
Assembly Manual



Wheel color may vary according to availability

■ What's In The Box

Please inspect the contents of your shipped package to ensure you have received everything that is listed below.



Polaris Dolly with 16 wheels (Part-1)



2 x Universal Track Ends (Part-2)



Center Support (Part-3)



Break System
(Part-4)



75mm Bowl Adapter
(Part-5)



Conversion Ring
(Part-7)



100mm Bowl Adapter
(Part-6)



Flight Case

All rights reserved.

No part of this document may be reproduced, stored in a retrieval system, or transmitted by any form or by any means, electronic, mechanical, photo-copying, recording, or otherwise, except as may be expressly permitted by the applicable copyright statutes or in writing by the Publisher.

■ Polaris Dolly Setup

- 1 Now place the dolly (Part-1) onto the track. The handles part of the dolly platform (Part-1) should be inside of the track (**not included**) as shown. Make sure all wheels are aligned correctly on the track (**not included**) and dolly runs smoothly.



- 2 Insert the universal track ends (Part-2) on the track (**not included**).
- 3 Use the supplied long thumb screws to lock the track into position.



- 4 Here we have used 8ft track (**not included**) for assembling purpose. So, for longer track, you need to place the central support (Part-3) in the middle of the track, as shown in photo.



- 5 Mount the break bracket (Part-4) on side of the dolly platform (Part-1) & tighten the knob.
- 6 Adjust the position of the bracket (Part-4) so it goes under the track to prevent the platform (Part-1) from tilting out.



Note: Assembly steps for 75mm (Part-5) and 100mm (Part-6) Bowl are same.

7. Now, mount the 75mm bowl adapter (Part-5) onto the dolly platform (Part-1)



Note: To prevent the 75mm/100mm or any other fluid head from slipping through the dolly platform's centre hole, we use a conversion ring, Conversion Ring reduces the gaping of the hole size of the dolly platform. If the size of fluid head locking base is smaller than the center hole of the dolly platform, then we have to remove the bolts and use the conversion ring to lock the fluid head in place. But if the size of fluid head locking base matches the center hole of the dolly platform, then we do not need a conversion ring. We can directly lock the fluid head with the locking lever.

8. Now, mount the fluid head (**Not Included**) onto the portable dolly (Part-1)
9. Insert the conversion ring (Part-7) from the bottom side of dolly through the fluid head screw.



10. Then tighten properly to secure with it.



Note: If you need higher level shots, then you can put universal track end (Part-2) on C-Stands (not included).

11. Mount the Universal track ends (Part-2) onto C-stand (not included)
12. Tighten the provided knob to secure it properly.
13. Attach the Centre Support Bar (Part-3) under the centre of the track (Part-1) system.
14. Help of a Support stand (not included).



15. Now mount your Fluid Head (not included) onto the Platform (Part-1).
16. Tighten the knob Properly.



17. Then mount your camera setup.



**YOUR PROAIM POLARIS PORTABLE CAMERA DOLLY
ALL DRESSED UP AND READY TO GO!**



(SHOWN WITH OPTIONAL ACCESSORIES)

Warranty: We offer one year warranty for our products from date of purchase. Within this period of time, we will repair it without charge for labor or parts. Warranty doesn't cover transportation costs nor does it cover a product subjected to misuse or accidental damage. Warranty repairs are subjected to inspection and evaluation by us.

Liability: We are not liable for damage caused by products that we do not supply or from mishandling in transit, accident, misuse, neglect, lack of care of the product, or service by anyone other than our company.

Contact Us: In case of any kind of dissatisfaction, please contact us immediately and we promise our utmost support and care until you use our product.