

# Multi Adapter Kit (Mitchell-Euro/Elemac-Bowl) (P-MLAK-01)

## Assembly Manual



### What's In The Box

Please inspect the contents of your shipped package to ensure you have received everything that is listed below.



1 x Bowl adapter  
Size: 100 mm



1 x Bowl adapter  
Size: 150 mm



1 x Mitchell plate



1 x Adapter Plate



1 x Euro Flange



4 x Distance Rods



1x Euro Adapter



1 x Mitchell Lock



Clamping knob



(6 x 25mm=12pc) Allen Bolts  
(6 x 12mm=6pc) Allen Bolts



2 x L-Type Allen Key  
(Size:5mm & 6mm)



Allen Bolts  
(8 x 50mm=3pc)



1 x Spanner (Size:13)

All rights reserved.

No part of this document may be reproduced, stored in a retrieval system, or transmitted by any form or by any means, electronic, mechanical, photo-copying, recording, or otherwise, except as may be expressly permitted by the applicable copyright statutes or in writing by the Publisher.



Hard Case

## Multi Adapter Kit Setup

- Attach the Euro Flange by matching it with the thread of the Adapter Plate and then insert the bolt.



- Secure all the bolts by tightening them using the Allen Key.



## Bowl-Euro

- Attach the Distance Rods by matching them with the side thread on the Adapter Plate and then secure them using the Allen Key.



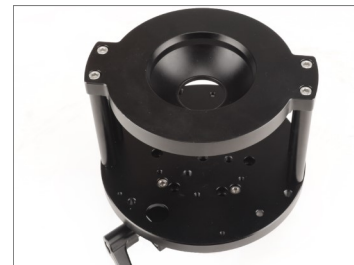
- Attach all the Distance Rods on the Adapter Plate, as shown in the image. Place the 100mm bowl adapter by matching it with the threads of the Rods.



- After placing the 100mm bowl adapter on the rods, then match the thread and insert the bolts.



- Tighten the bolt using the Allen Key, so that bowl euro can be attached properly.



## Mitchell-Euro

- Attach the Distance Rods on the Adapter Plate at equal distance from each other according to your requirement and then secure them with the help of the bolt.



- Attach the distance rods at equal distance from each other, as shown in the image.

**NOTE:** You can attach rods on the multiple threads of the Adapter Plate according to your setup requirement.



- Place the Mitchell Plate by matching it with the thread of the Distance Rods and then insert the bolt by matching it with the thread hole.



- Properly tighten the bolt of the Mitchell Plate using the Allen Key.



## Euro Flange Detach

- Loosen the bolts to remove the Euro Flange from the Adapter Plate and then remove them using the Allen Key, as shown in the image.



## Mitchell-Bowl

- Attach the Mitchell Lock by matching it with the threads from the bottom part of the Adapter Plate.



- Insert the bolt after matching the Mitchell Lock with the threads of the Adapter Plate and then properly tighten it with the Allen Key.



- Then Mitchell-Mitchell plate is ready to use.

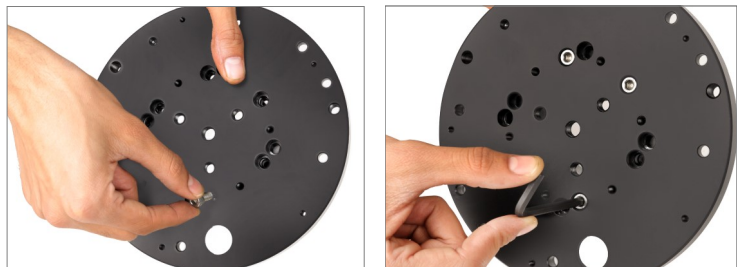


## Mitchell-Euro Adapter

- Attach the Mitchell Lock by matching it with the bolt thread of the Adapter Plate.



- Insert the bolts from the back side of the Adapter Plate, and then properly tighten them using the Allen Key.



- Place the Euro Adapter on the Adapter Plate by matching it with the thread of the Plate and then insert the bolts.



- After inserting the bolts, tighten them properly using the Allen Key.



### Mitchell-Bowl Adapter

- Place the bowl adapter (150mm) plate on the rods.



- After placing the Bowl Adapter on the Rods, insert the bolt by matching it with the Rod thread.



- Properly tighten the all bolts using the Allen Key. then Michell-bowl adapter is ready to use.



- Remove the castle nut from the Mitchell Lock, as shown in the image.



- Mount the Bowl-Mitchell on the tripod stand. **(Not Included)**.



- Secure the Bowl-Mitchell using the castle nut from the bottom of the Tripod Stand **(Not Included)**.



- Mount 150mm fluid head **(Not Included)** & insert it into the bowl through the screw.



- Properly secure the Fluid Head (150mm bowl) **(Not Included)** using the Fluid Head knob.



- After properly mounting the Fluid Head (150mm bowl) **(Not Included)**, remove the Plate by pulling the provided knob.



- Attach the Plate to the bottom part of the Camera **(Not Included)** and then mount the Camera **(Not Included)** by pulling the knob of the Fluid Head.



- The Camera (**Not Included**) has been properly attached to the Fluid head.



## ■ Euro-Mitchell Setup

- Mount the Euro Mitchell on the Bazooka (**Not Included**).



- Then properly secure the Euro Mitchell with the help of the provided ratchet knob.



- Mount the Fluid Head (**Not Included**) onto the Euro Mitchell.



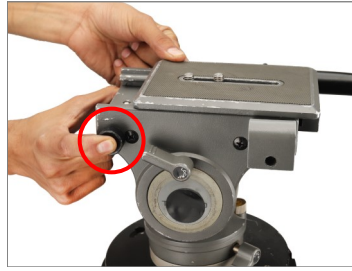
- Properly secure the Fluid Head (**Not Included**) using the castle ring.



**NOTE:** It with Camera, Dolly, Bazooka, Tripod, Slider, Jib & more, as it is compatible with almost every operation.



- Remove the Plate by pushing the knob of the Fluid Head (**Not Included**).



- Attach the plate of the Fluid Head (**Not Included**) to the bottom of the Camera (**Not Included**) and then properly tighten it using the screw driver.



- Mount the Camera (**Not Included**) by sliding it onto the Fluid Head, as shown in the image.



- Tighten the knob of the Fluid Head by pulling it to secure the Camera (**Not Included**).



**NOTE:** It is a full-fledged kit that includes all necessary adapters and tools, created with a goal to be adaptable with every mount and with as few items as possible. Quickly adapt from Bowl to Euro, Bowl to Mitchell, Euro to Bowl, Euro to Mitchell, Mitchell to Bowl, Mitchell to Euro, truly one solution for every situation.





**YOUR PROAIM MULTI ADAPTER KIT (MITCHELL-EURO/ELEMAC-BOWL)  
ALL DRESSED UP AND READY TO GO!**



**(SHOWN WITH OPTIONAL ACCESSORIES)**

**Warranty:** We offer one year warranty for our products from date of purchase. Within this period of time, we will repair it without charge for labor or parts. Warranty doesn't cover transportation costs nor does it cover a product subjected to misuse or accidental damage. Warranty repairs are subjected to inspection and evaluation by us.

**Liability:** We are not liable for damage caused by products that we do not supply or from mishandling in transit, accident, misuse, neglect, lack of care of the product, or service by anyone other than our company.

**Contact Us:** In case of any kind of dissatisfaction, please Contact us immediately and we promise our utmost support and care until you use our product.