

Megagrip Car/Vehicle Camera Mount (CM-MGGP)

Assembly Manual



What's In The Box

Please inspect the contents of your shipped package to ensure you have received everything that is listed below.

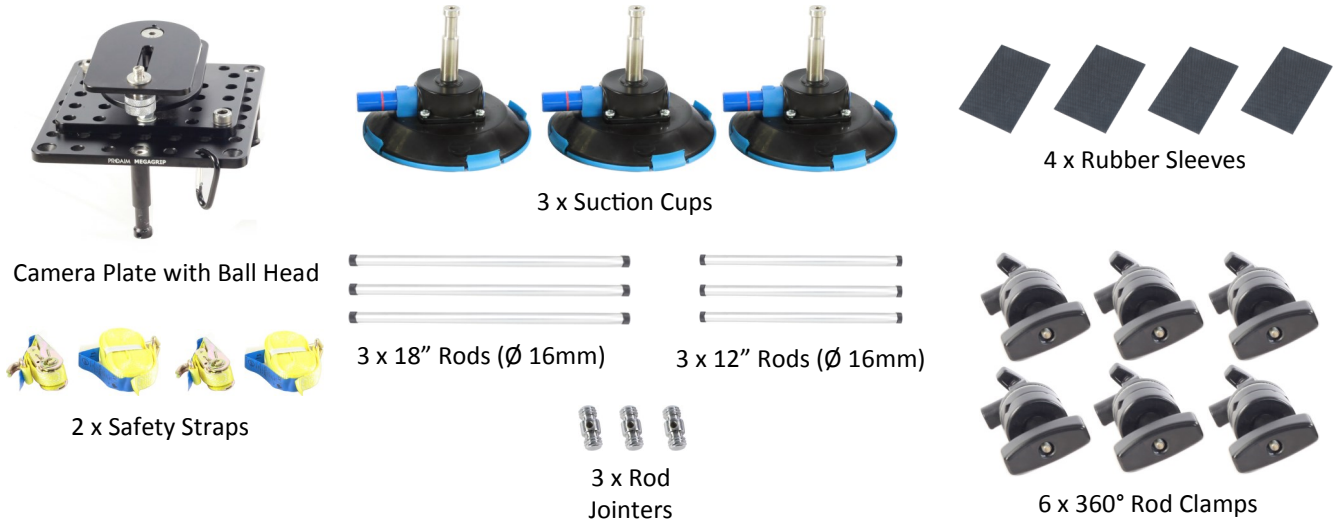
Note: If you have purchased (CM-MGGP-00) kit, you will receive the following:



All rights reserved.

No part of this document may be reproduced, stored in a retrieval system, or transmitted by any form or by any means, electronic, mechanical, photo-copying, recording, or otherwise, except as may be expressly permitted by the applicable copyright statutes or in writing by the Publisher.

Note: If you have purchased (CM-MGGP-01) kit, you will receive the following:

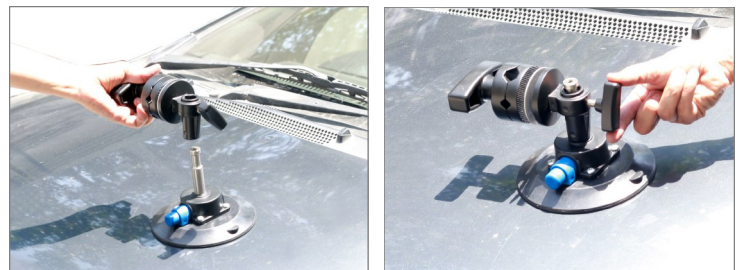


Megagrip Setup

To guarantee proper adhesion of suction cups, check that the surfaces of both, suction cup and mounting surface are clean, dry & dust-free.

NOTE: Please mount the device on smooth, even and non-porous surfaces.

- Remove the complimentary dust cover and place your first suction cup on selected position from where you want to shoot. Press down suction cup and keep pushing pump to firmly fix it on surface. Repeat this process for all suction cups.
- Attach the Adjustable Rod Clamp with suction cup and tighten knob to secure the clamp.
- Insert rod of any desired length into rod clamp and tighten it with the knob. Then by repeating the previous step, attach rod clamp to other end of rod and fix it by the knob.



- Attach ball levelling camera plate with rod clamp and secure it carefully by tightening the knob. Repeat same process for rest of clamps.

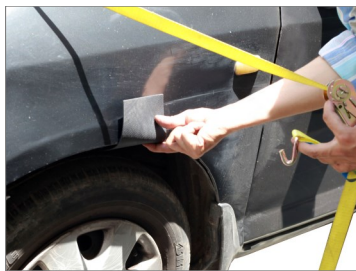


- Although the Megagrip's holding force is adequate for regular driving shots, safety belts/tension straps must be used for additional security. When mounted on cars, the objects attached to Megagrip (e.g. camera) have to be secured additionally.



■ Things To Remember

- Use the rubber sleeves to avoid dents and scratches on car paint. Tighten tension straps carefully to avoid damages.



- The length of Rods can be extended as per your setup requirements with help of rod jointer/connector, to achieve different configurations.



- You can easily adjust/level the angle of each rod clamp through the provided knob in 360° Pan & Tilt Rotation, which gives extra flexibility, and thus you can mount cups to virtually any part of vehicle.



- You can adjust angle of Ball Levelling Camera Platform at any required angle in 360° rotation, and can be locked down with knob when you wish to capture shots in static position.



NOTE: Test all fixtures before driving.

YOUR PROAIM MEGAGRIP CAR/VEHICLE CAMERA MOUNT ALL DRESSED UP AND READY TO GO!



(SHOWN WITH OPTIONAL ACCESSORIES)

Warranty: We offer one year warranty for our products from date of purchase. Within this period of time, we will repair it without charge for labor or parts. Warranty doesn't cover transportation costs nor does it cover a product subjected to misuse or accidental damage. Warranty repairs are subjected to inspection and evaluation by us.

Liability: We are not liable for damage caused by products that we do not supply or from mishandling in transit, accident, misuse, neglect, lack of care of the product, or service by anyone other than our company.

Contact Us: In case of any kind of dissatisfaction, please Contact us immediately and we promise our utmost support and care until you use our product.