

# PR<sup>◻</sup>AIM MB-10 Lightweight Clip-On Camera Matte Box for 67mm - 82mm, 114mm Lenses (MB-10-01)

## Assembly Manual



### What's In The Box

Please inspect the contents of your shipped package to ensure you have received everything that is listed below.



Metal Frame with  
Inbuilt Holder



Rubber Hood



Carbon Fiber Top Flag



15mm Rod Adapter



Lens Cleaning  
Cloth



(OD-114) -(ID-67)mm  
Ring Clamp



(OD-114) -(ID-72)mm  
Ring Clamp



(OD-114) -(ID-77)mm  
Ring Clamp



(OD-114) -(ID-82)mm  
Ring Clamp



3mm Allen  
Key

All rights reserved.

No part of this document may be reproduced, stored in a retrieval system, or transmitted by any form or by any means, electronic, mechanical, photo-copying, recording, or otherwise, except as may be expressly permitted by the applicable copyright statutes or in writing by the Publisher.

## Matte Box Setup

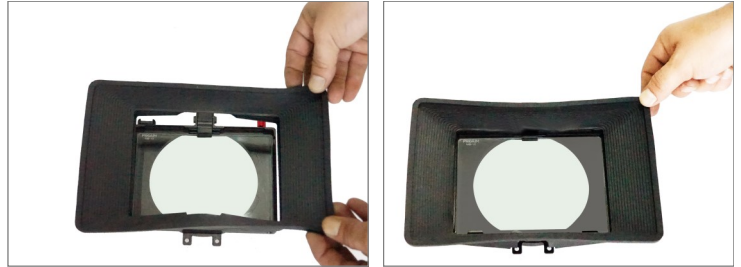
### Attaching Filter with Metal Frame

- If you want to attach the filter (Not Included) press the button and insert filter (Not Included) into the frame. Be sure your filter is fitted properly.



### Attaching Rubber Hood with Metal Frame

- Attach the rubber hood with metal frame with inbuilt holder properly.



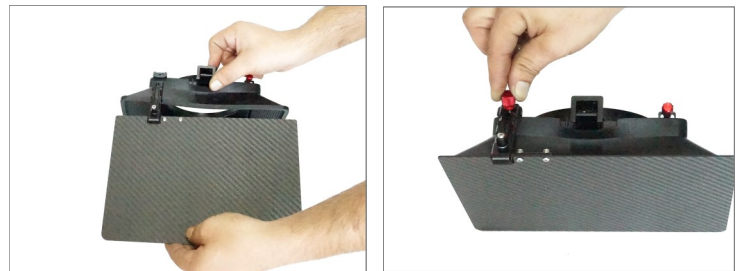
- Attach 15mm Rod adapter in the provided metal frame knob connector and tighten the knobs properly with the help of Allen key. You can adjust the lense position movement according to your requirement.

**Note:** The adapter which is attached to the bottom of the metal frame knob is for multi-purpose usage within different setups.



- Next, attach your top flag into the metal frame, you can adjust top flag movement of the metal frame by loosen/tighten the knob to secure the sections together.

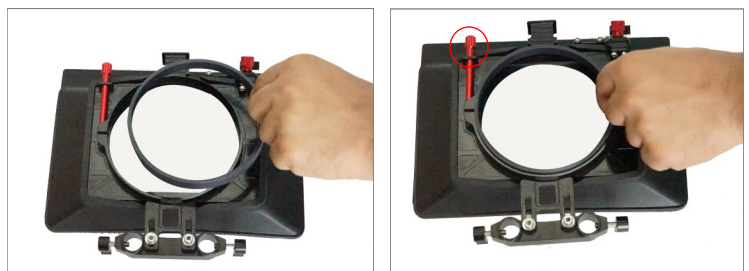
**Note:** You can fold the carbon fiber top flag down to cover the front of your matte box and lens and protect it from any debris, dirt, or dust on the set.



## Ring Clamp Setup

- (OD-114) -(ID-67)mm ring clamp attached into metal frame with inbuilt holder. You can adjust the lens position movement according to your requirement. Follow the same process Remaining 3 rings clamps.

**Note:** The matte box is designed to clamp onto a 114mm lens and comes with four adapter rings for mounting on 67mm, 72mm, 77mm, and 82mm lenses.



**YOUR PROAIM MB-10-01 LIGHTWEIGHT CLIP-ON CAMERA MATTE BOX  
ALL DRESSED UP AND READY TO GO!**



**(SHOWN WITH OPTIONAL ACCESSORIES)**

**Warranty:** We offer one year warranty for our products from date of purchase. Within this period of time, we will repair it without charge for labor or parts. Warranty doesn't cover transportation costs nor does it cover a product subjected to misuse or accidental damage. Warranty repairs are subjected to inspection and evaluation by us.

**Liability:** We are not liable for damage caused by products that we do not supply or from mishandling in transit, accident, misuse, neglect, lack of care of the product, or service by anyone other than our company.

**Contact Us:** In case of any kind of dissatisfaction, please Contact us immediately and we promise our utmost support and care until you use our product.