

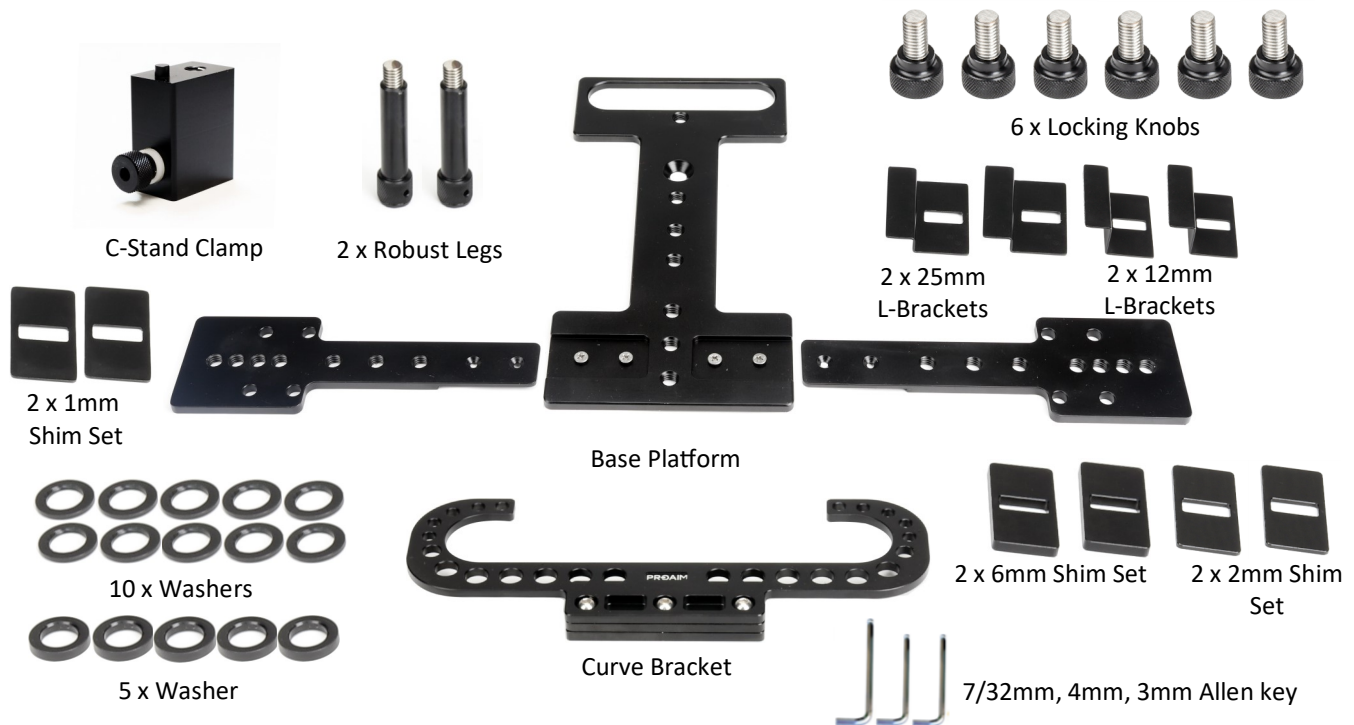
PROAIM LT Universal Laptop Workstation for Tethered Shooting (P-WKST-02)

Assembly Manual



What's In The Box

Please inspect the contents of your shipped package to ensure you have received everything that is listed below.

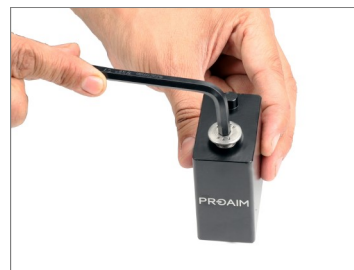
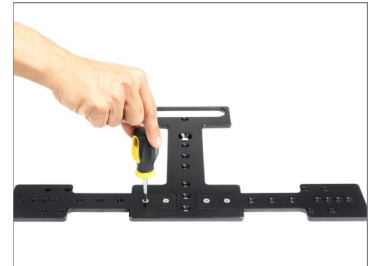
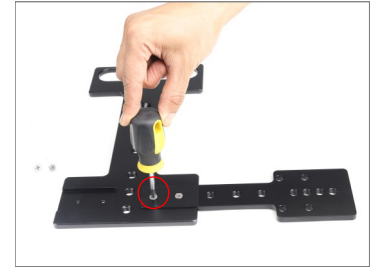


All rights reserved.

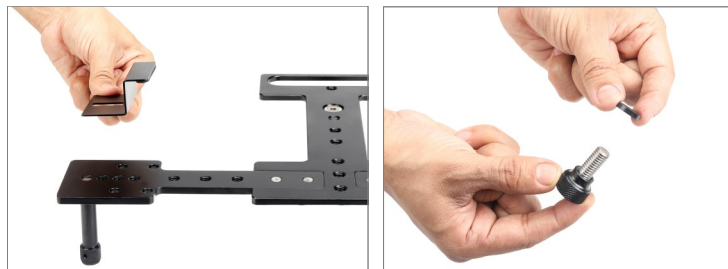
No part of this document may be reproduced, stored in a retrieval system, or transmitted by any form or by any means, electronic, mechanical, photo-copying, recording, or otherwise, except as may be expressly permitted by the applicable copyright statutes or in writing by the Publisher.

■ Laptop Workstation Setup

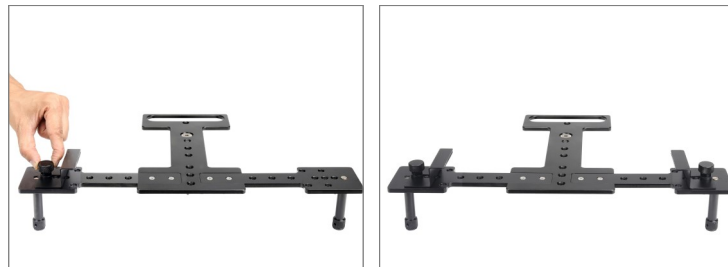
- Loosen and remove the screw from the base platform using a screwdriver.
- Align the side bracket to the thread on the base platform and secure it correctly using a screwdriver.
- Similarly, attach the second side bracket to the base platform and tighten it with a screwdriver.
- Attach the robust legs by aligning them to the threads on the side brackets, as shown in the image.
- Remove the bolt from the C-stand clamp, attach the clamp to the base platform and tighten the bolt to secure it properly.
- Attach shims to the L-bracket as per the height of your Laptop.



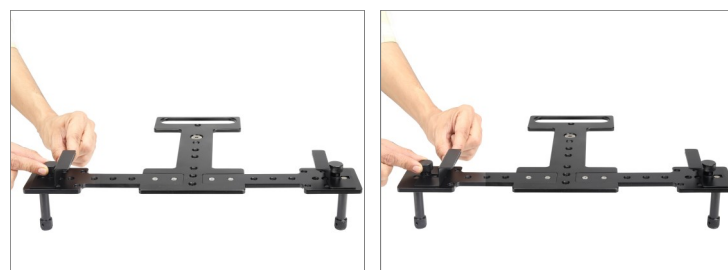
- Attach the 12mm L-brackets onto the Base Platform, then insert the washer into the locking knob.



- Secure the L-Brackets using locking knobs as shown in the images.



Note: There are many holes on the Base platform. You can attach the L-Brackets at any spot according to the Laptop size.

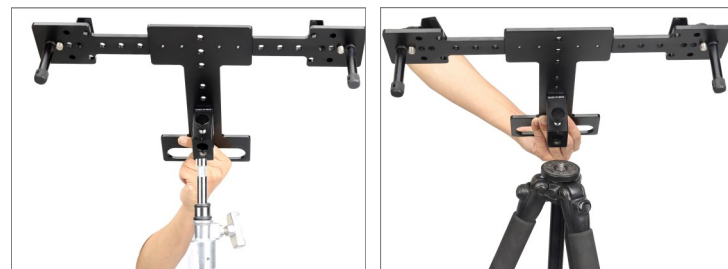


- Slightly loosen the bolts of the C-stand adapter.

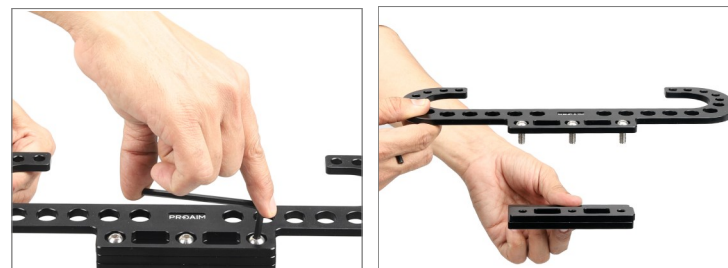


- Mount the Base platform onto a Tripod or a Light Stand.

Note: The base platform is compatible with laptops with a height between .375"-1", a length between 10"-17" and a width between 7"-11".



- Loosen the bolts on the curve bracket to remove the bottom plate.



- Attach the Curve Bracket to the base platform and tighten both together using an Allen key.



- You can mount the workstation on a C-Stand via a C-stand clamp or on a tripod via Curve Bracket.



YOUR PROAIM LT UNIVERSAL LAPTOP WORKSTATION FOR TETHERED SHOOTING ALL DRESSED UP AND READY TO GO!



(SHOWN WITH OPTIONAL ACCESSORIES)

Warranty: We offer one year warranty for our products from date of purchase. Within this period of time, we will repair it without charge for labor or parts. Warranty doesn't cover transportation costs nor does it cover a product subjected to misuse or accidental damage. Warranty repairs are subjected to inspection and evaluation by us.

Liability: We are not liable for damage caused by products that we do not supply or from mishandling in transit, accident, misuse, neglect, lack of care of the product, or service by anyone other than our company.

Contact Us: In case of any kind of dissatisfaction, please Contact us immediately and we promise our utmost support and care until you use our product.